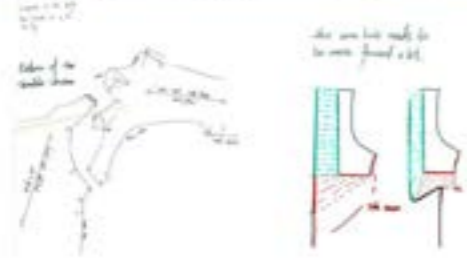


TIAN QIU



PROTOTYPING DEVELOPMENT



Using inspiration from previous experiments, I used pattern cutting and draping to achieve the desired structured effect in the shoulder structure. I used draping to create the bulge and structure in the shoulder structure by folding and using pins.



Tried to apply the details of the prototype to the rest of the costume and drew some sketches.



SKETCHES DEVELOPMENT

Spreading new ideas

Adding some color in first look all over the body



MOLLY WILLIAMS PRENTICE

LOOK 3



LOOK 4



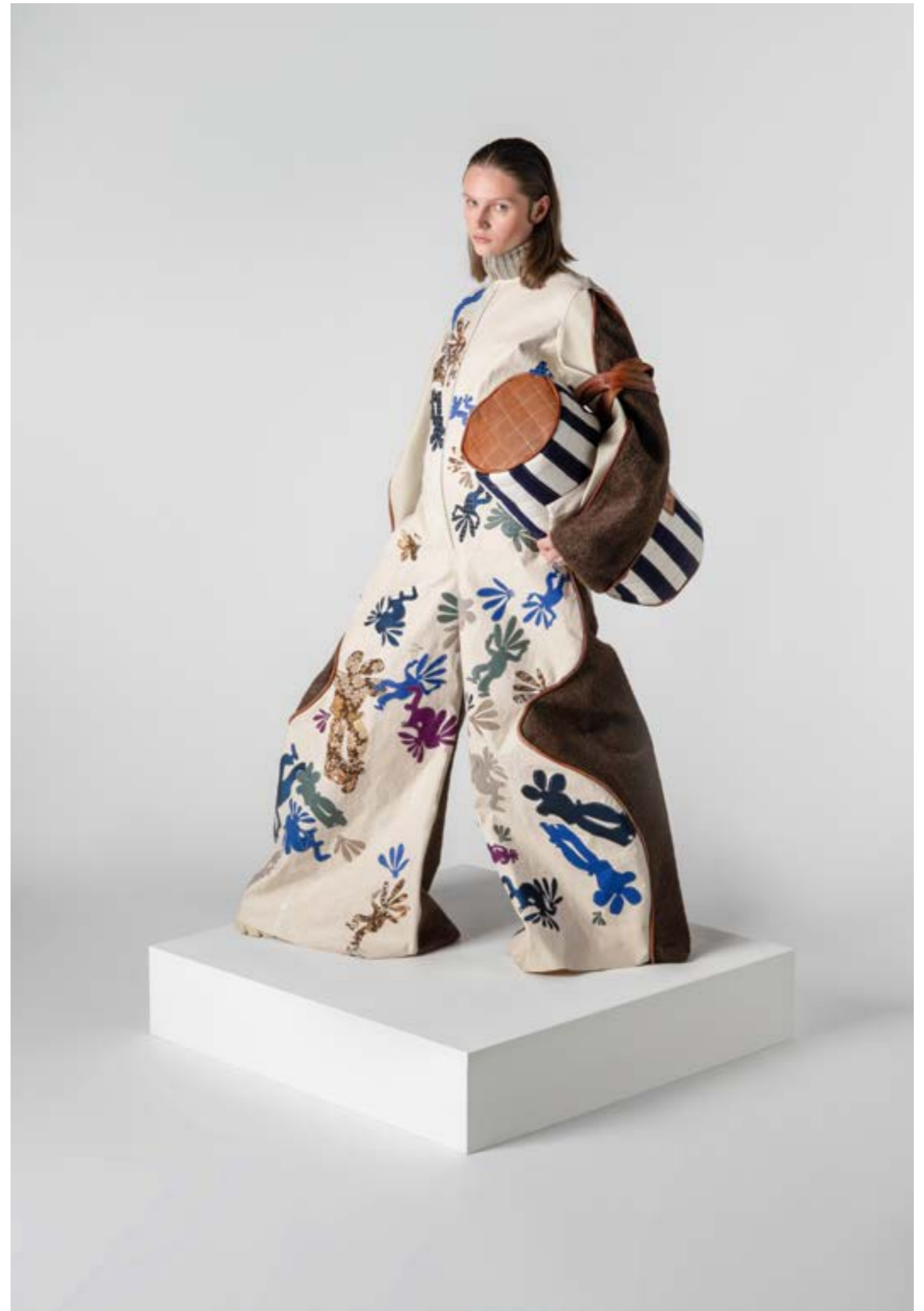


LUCY ALICE PEARSON





MILLY TREND





AT THIS STAGE I WAS STILL USING MY NANS PHOTOS AS AN INTEGRAL PART OF THE DEVELOPMENT. CONSTANTLY REFERRING BACK TO IMAGERY FOR HISTORICAL SILHOUETTE AND STYLE REFERENCES AS WELL AS PATTERN AND TEXTILE DEVELOPMENT. FARMING IN SUFFOLK WAS A HUGE PART OF MY NANNY PENNY'S UPBRINGING AND THE CASUAL TAILORING AND GAUDY STYLE WAS IMPORTANT TO REFLECT THROUGH THE DEVELOPMENT PROCESS, BOTH THROUGH FINISHINGS AND SILHOUETTE.

FARMING IN SUFFOLK...



GAUDY FLORETT!

→ My Nanny Penny



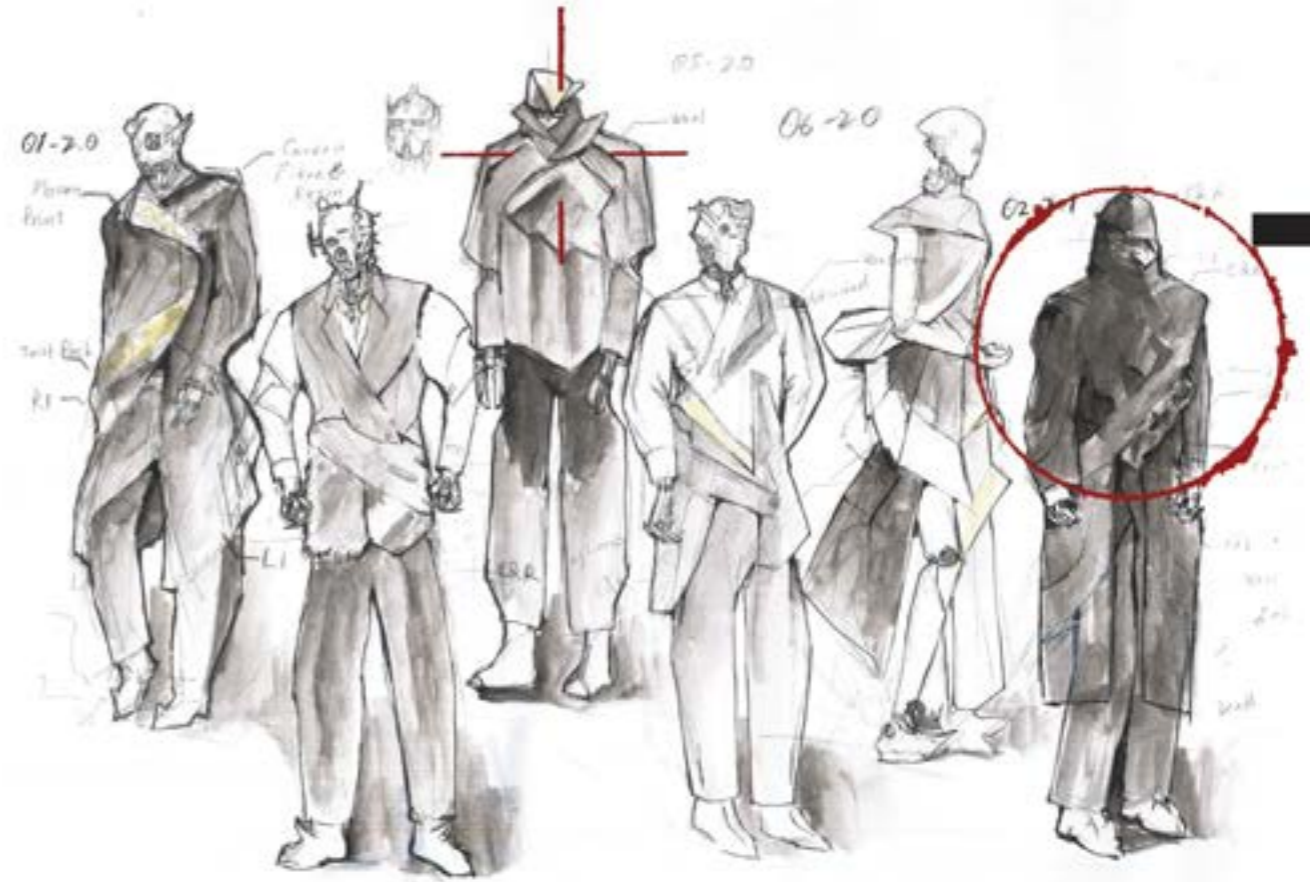
→ THESE FARMERS CAPS

→ MY GRANDDAD ON THE FARM

→ 2 LOW TEE IN AND TO LEAN PR

NOAH FANG





Wings is a uniquely human design. Since ancient times, humans have fantasized about ideas or revealed real figures as supreme beings. They can be out of awe for future or reverence for ancestors or leaders. Once a person becomes such an object of worship, their true image becomes distorted and becomes unrecognizable and unbelievable.

This piece expresses the concept through the creation of alien, unique symbols.



ROMY MONAGHAN

THE FEATHER ICING KNOT



• A paisserie classic: The feather icing technique is a traditional cake decoration and delicacy common in Europe, from Mr Kipling's French tancies, Bakewell slices and Mince pies. The marbled icing is so enjoyable to create as it is delicious to eat...



• Initially using a punch card on the domestic knitting machine, I explored larger prints using ARI digital knit technology. Combining the icing motif with felted lambswool flees together traditional celebration cakes with the wools tactile and aesthetic of picnic blankets.





PROTOTYPE & SKETCH DEVELOPMENT

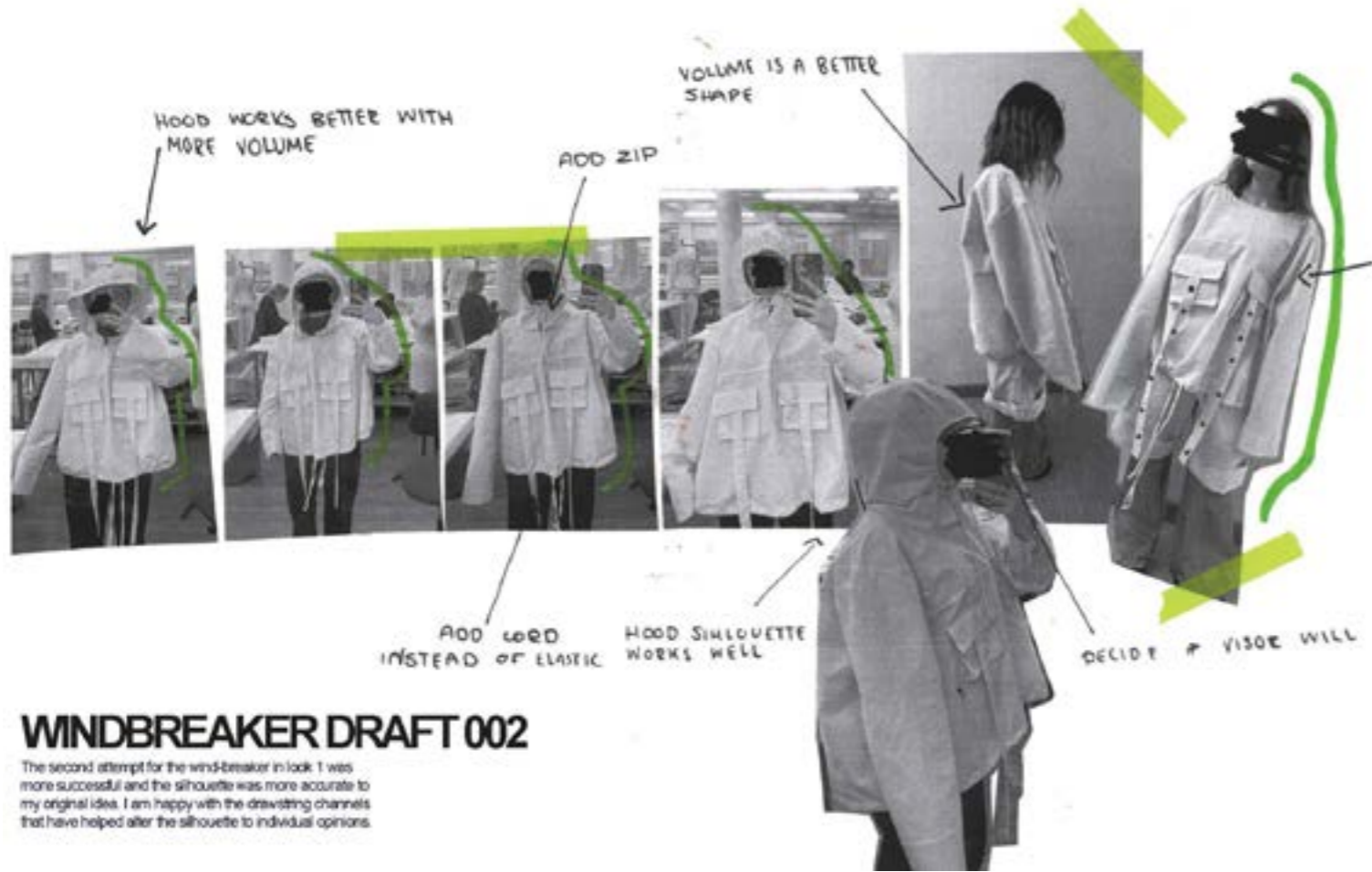


- Design development largely intends to combine the extravagance of cakes with the sensitivity, traditional, yet eclectic nature of picnic attire and rugs. This included use of wool, stripes, checks and the leather icing print.

- Silhouettes aimed to reflect these values too, with zero-waste construction being at the center of pattern cutting. Experimenting with rucking and tying, I used large stretches of fabric with minimal cutting in order to create dynamic silhouettes which mimicked my 'packaging' and 'picnic rug' research motifs. This included accessorizing garments with handkerchiefs of my felted knits.

KENNEDY BOLAND





WINDBREAKER DRAFT 002

The second attempt for the wind-breaker in look 1 was more successful and the silhouette was more accurate to my original idea. I am happy with the drawing channels that have helped alter the silhouette to individual opinions.



When I design streetwear, rap music and hip hop culture are usually on of the first things that come to mind. I enjoy how bold rap artists can be when it comes to their personal style and how they can uniquely express themselves through their individual style. Rap artists in the industry use chain as a symbol to represent wealth and success. Chains were popularised when rap moved to mainstream media. The chains became bigger and bolder as rap did. It is used as a symbol of self-expression and high social status. A chain can be used as symbolism and an extension to the artists brand. The bigger the chain the more respect the artist receives.

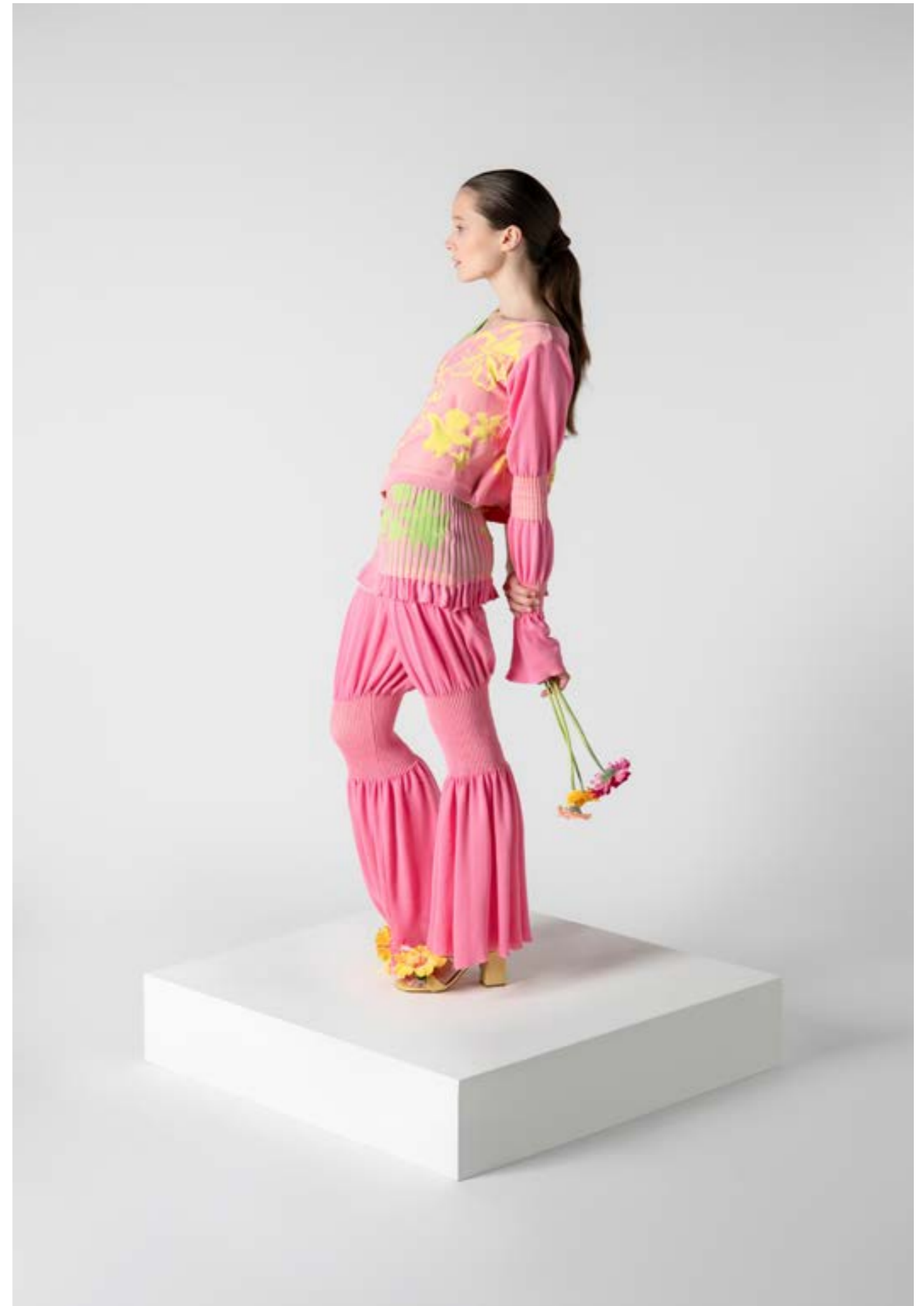
HIP HOP CULTURE



LOOK 005

PUFFER JACKET AND LONG SHORTS

CASEY DILLON





GROWING UP AND VISITING THIS BEAUTIFUL COUNTRY CAUSED A FASCINATION WITHIN ME; EVERYTHING WAS SO INTERESTING AND UNIQUE FROM THE NATURE, PEOPLE AND THE POLITICS. CUBA IS BEAUTIFUL ON THE SURFACE WITH ITS TROPICAL CLIMATE; IT HARVESTS SOME BEAUTIFUL EXOTIC BLOOMS. I ALWAYS REMEMBER THE GORGEOUS BUSHES OF WILDFLOWERS BLOOMING WITH THE BRIGHTEST FLOWERS. HAVING SUCH A COMPLICATED POLITICAL STAFF THAT IS NEVER IN THE CENTER OF CONTROVERSY WITH THE COMMUNIST STRUC-

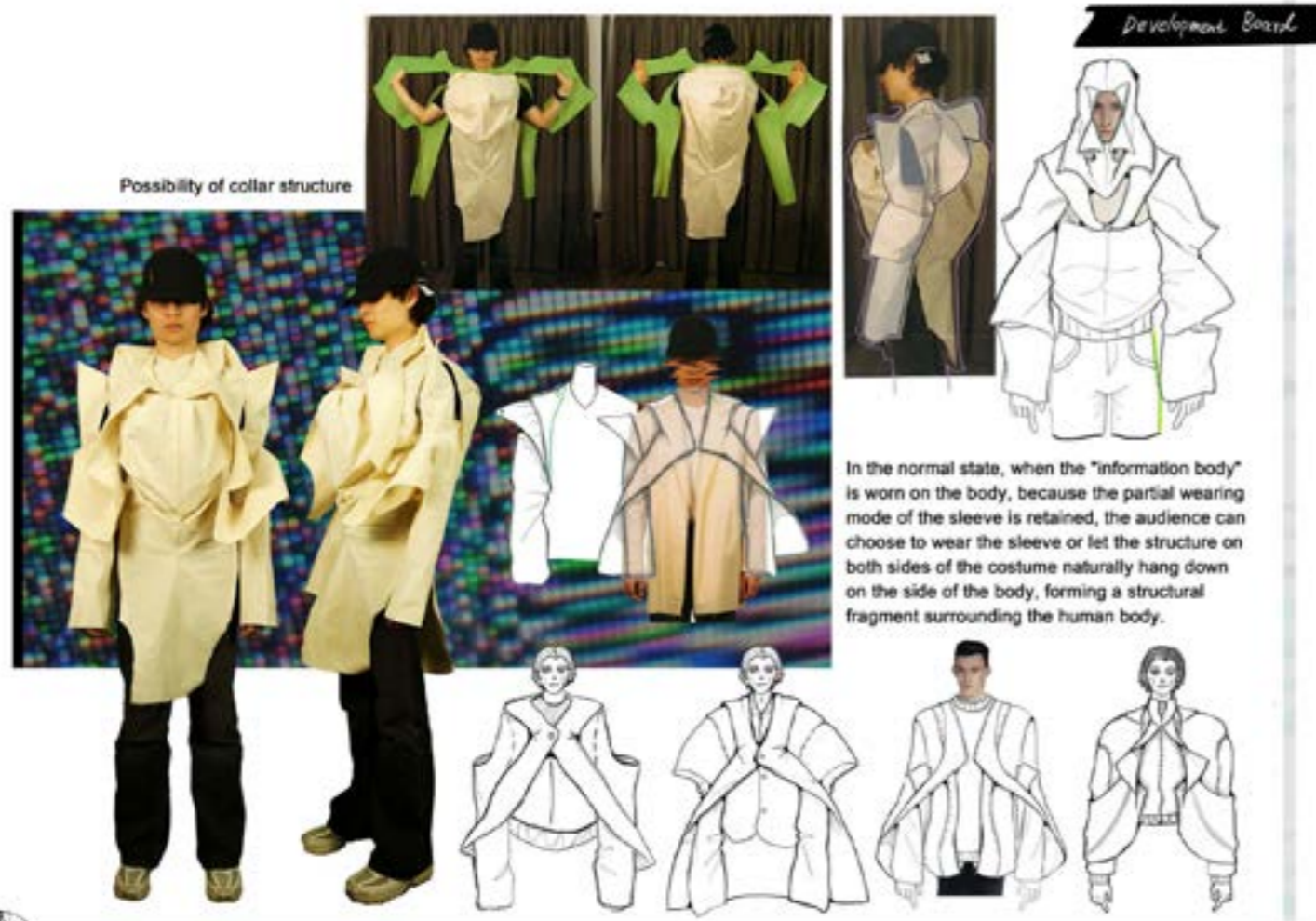
TURE WHEN THE PEOPLE OF CUBA FOLLOWED. I REMEMBER BEING SHOCKED AT HOW LITTLE THE LOCALS HAD, HOWEVER, THE ONE THING THAT STUCK IN MY MIND WAS HOW HAPPY EVERYONE WAS AT ALL TIMES. THESE ARE BEAUTIFUL MEMORIES THAT WILL FOREVER BE CHERISHED. CUBA WAS THE PLACE OF MY PARENTS WEDDING AND IT HAS GREAT IMPORTANCE IN ALL OF OUR LIVES; IT EMBODIES SO MANY VALUES THAT MY FAMILY STANDS FOR: HEALTH AND HAPPINESS OVER MATERIALISTIC MATTERS.

CUBA/MEMORIES

As my passion for knitted fabrics grows it is important to think of the placement of these fabrics on the body to create ground-breaking shapes within my garments. I began by draping these samples on the mannequin bringing in the early idea of twisting and layering. I then photographed these and began to create collages as with Photoshop to sketch new garment ideas from.



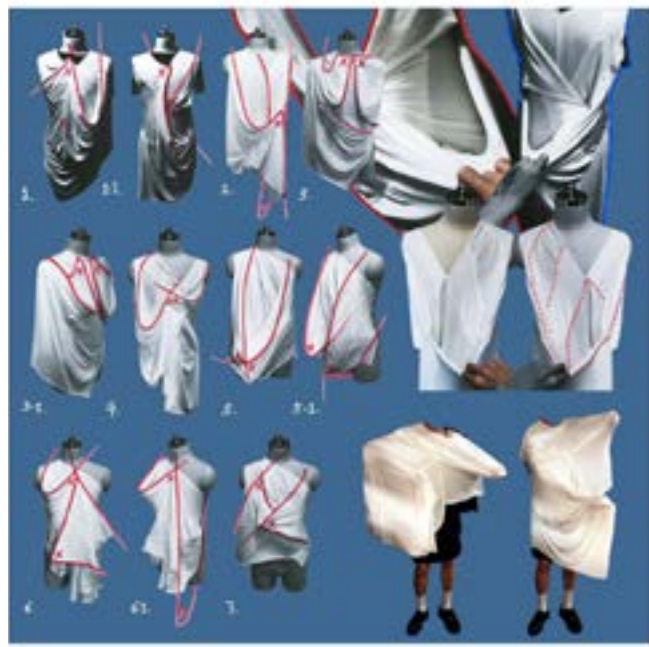
JIYUAN FAN



Development Board

Jersey Fabric Space 1

I conducted a series of stretching experiments on jersey fabrics using my body, and based on the test results, I divided the jersey fabric sheets to form an additional space protruding from the human body. The characters moved along the additional space after sewing, forming a large number of natural downward folds during human activity.



Photography



Printing

Development Board



I use time-lapse photography to capture some of my current state of mind, and by adjusting the exposure and contrast, I create a subtle atmosphere for the characters, like a blurry photo shrouded in dust in memories.

