





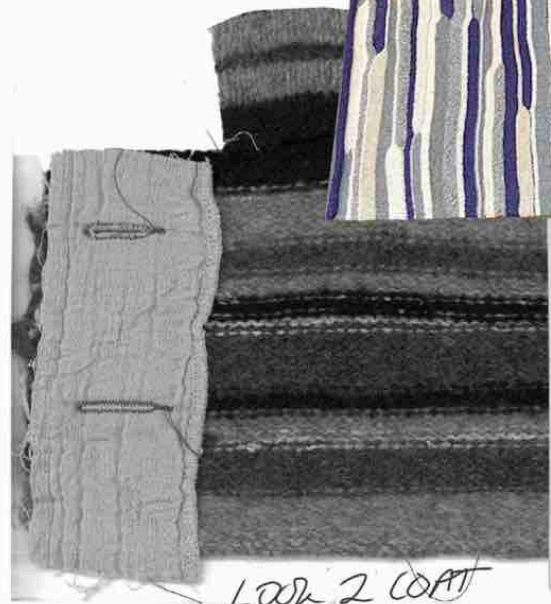


7 JUMPER JACKET:
- LAMB WOLLS
- RAMIE - SILK
- COTTON

Simple slayed pieces.



▲ 1/4" WAIVED DRS. STITCH



LOOK 2 COAT

NOSTOS
MIRANDA MALLINSON

LOOK 6 JUMPER



UNRAVELLED
LAMB SWOOL.



NOSTOS
MIRANDA MALLINSON

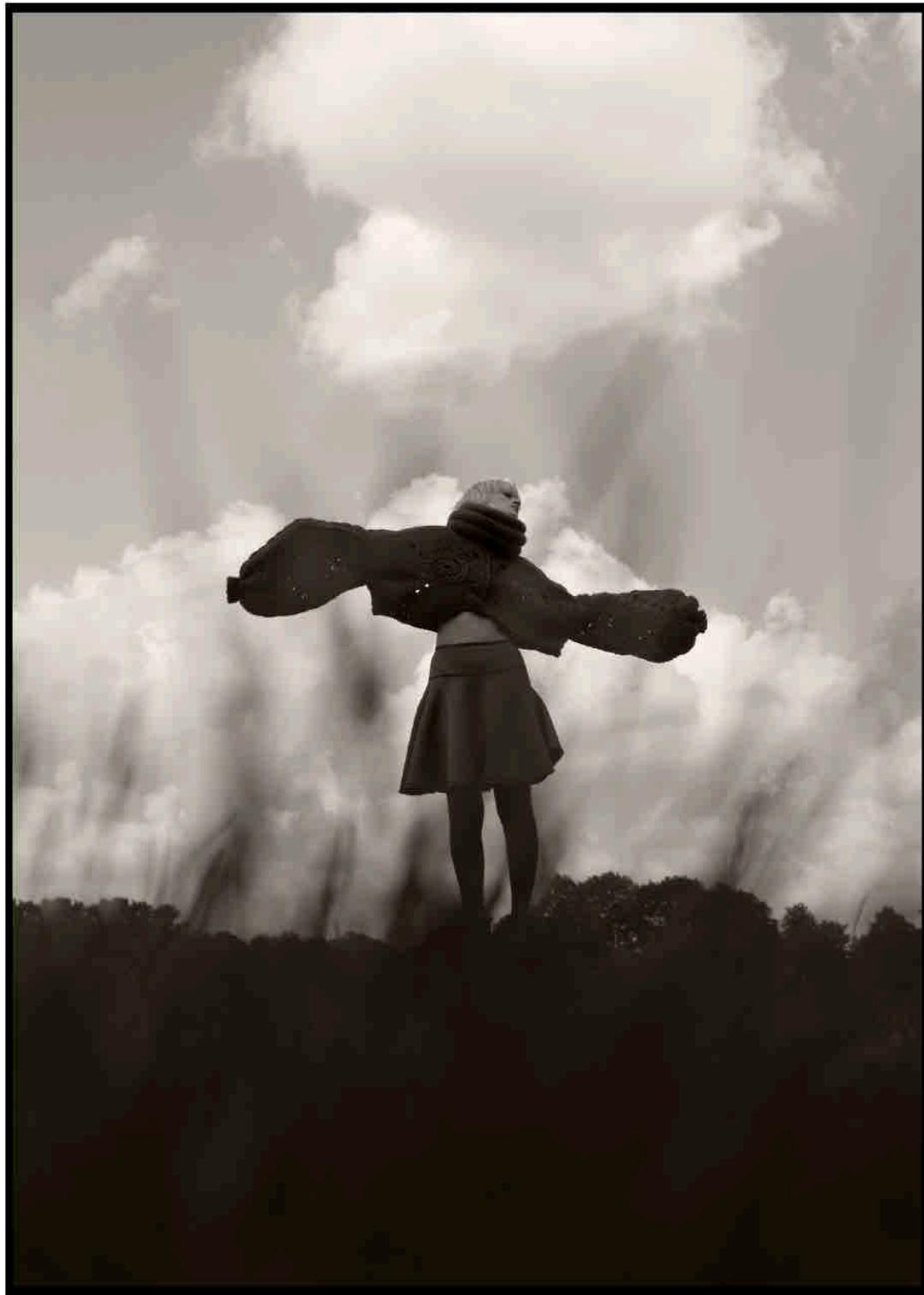


NOSTOS
MIRANDA MALLINSON



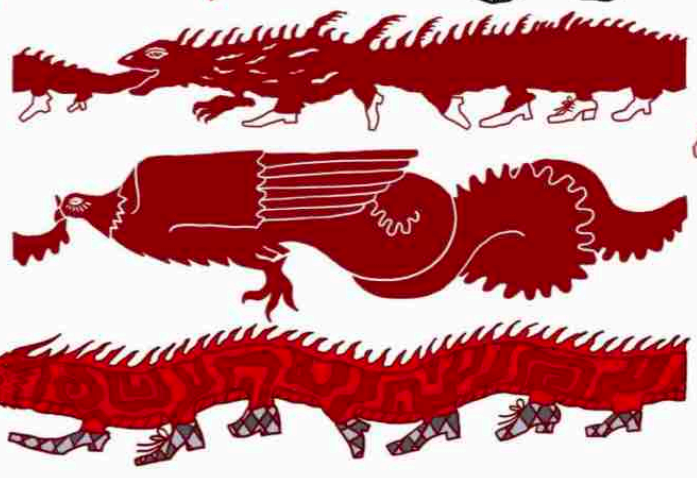
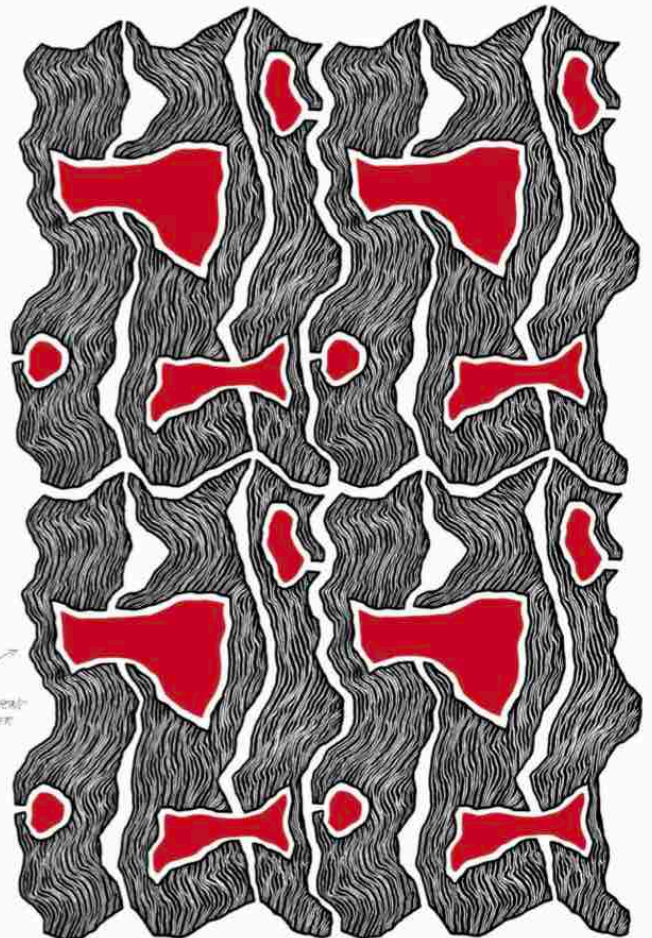
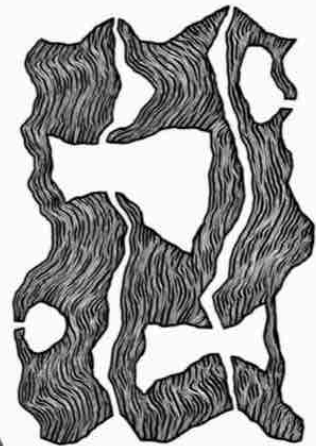
/imagine:[prompt] futuristic knitwear, knit:3, knitted, full body, head to toe, futuristic, robot, futuristic fashion, victorian, skirt, legs, shoes, full outfit

Crafted in Code
Maria Dorofeeva





LOOK 2





LOOK 4

↳ LOTTUN LAYIN



BEARD VEST

DIGITALLY PRINTED DRESS

PRINT LAYOUT



FRONT

BACK



FIRST TIME



ARS LONGA, VITA BREVIS



#2



#2



#3



#4



#5



#6

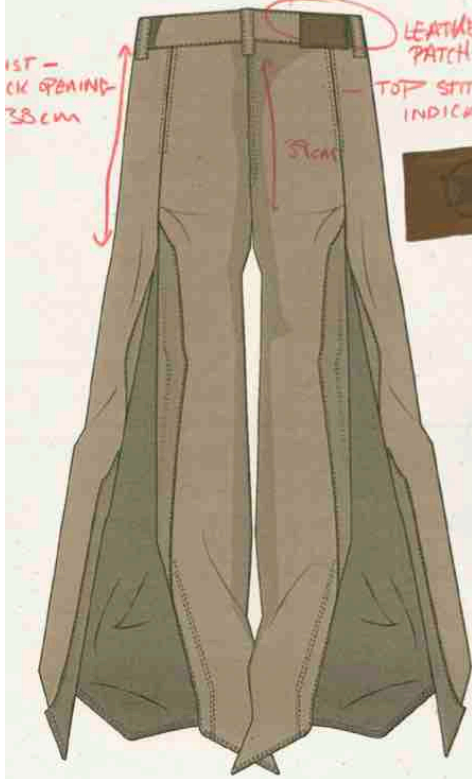


WAXED TRUCKER



- *CF 52cm
- *CB 60.5cm
- *CHST 55cm
- *SLEEVE LENGTH 64.5cm
- *UNDER ARM 61.5cm
- *WAIST 116cm

LEATHER PATCH LABEL
TOP STITCH WHERE INDICATED



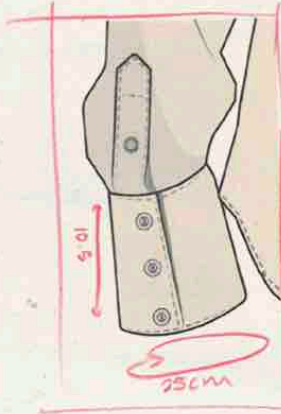
WAXED CHAPS



- *BUTTON FLY 21cm
- *BELT LOOP 6.5cm
- *TWIN STITCH WHERE INDICATED

BACK OPENING 55cm

RAW EDGE HEM



WESTERN SHIRT



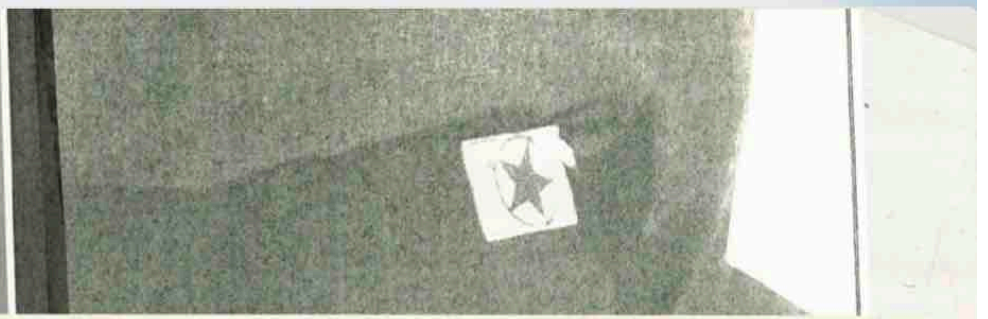
- *CENTER F. 62.5cm
- *CHEST 56cm
- *CENTER BACK 62cm

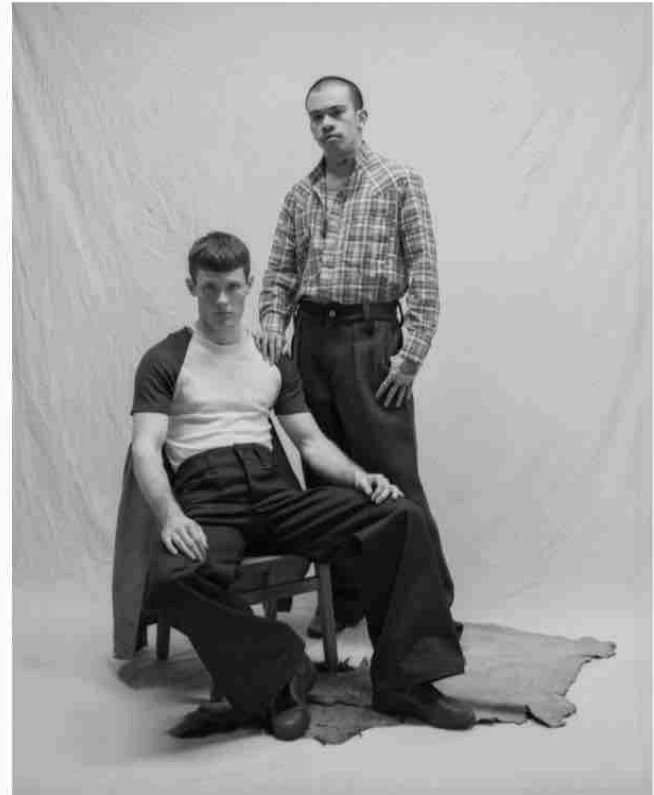
- *SLEEVE 73cm
- *UNDER ARM 59cm
- *SIDE SEAM 39cm



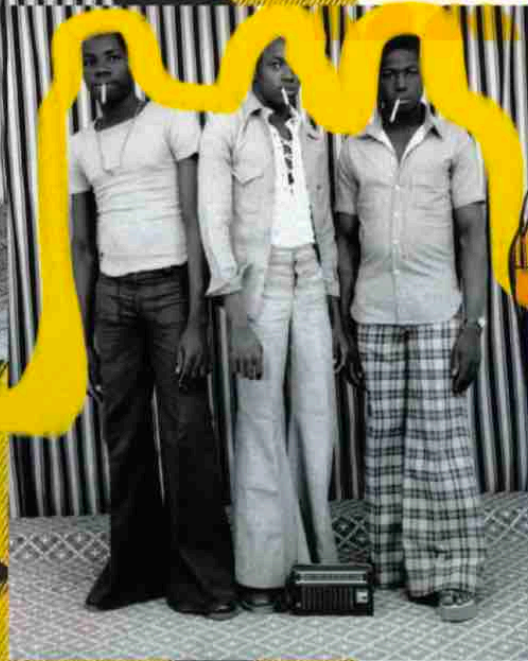
NELL PICKERELL IN COW-
BOY OUTFIT, WHICH SHE
WEARS A GREAT DEAL.

Sterson 2007 Dave back

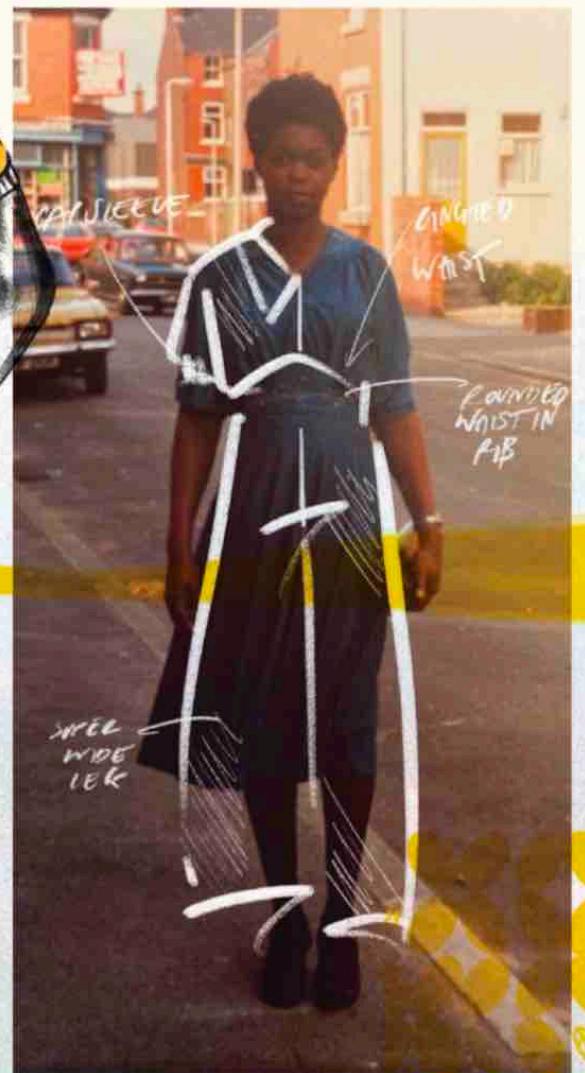




becca grace wong



LOOK 4 DEVELOPMENT



WIDE SLEEVE

SHOULDER WAIST

ROUNDED WAIST IN P/B

WIDE WAIST

all bein' well

LOOK 5 TECHNICAL FLATS

Scrap fabric
back neck
label
text: 'all bein' well'



2-layer
screen print
20x16cm

Fabric: BODY
1x1 rib
col
PANTONE
18-5845 TCX
Lush Meadow



8X5CM
White Label
@ CF
waistband
2mm Edge stitch
thread col white

Hip cut out with
concealed pocket



Alternating
gathered
sections
Fabric:
Twill col
PANTONE
16-6116 TCX
Shale Green

31CM

1.5CM
wide
strap



Fabric: 1CM BINDING
1x1 rib
col
PANTONE
19-0231 TCX
Forest Elf

2.5CM
Double
folded hem



BACK VIEWS



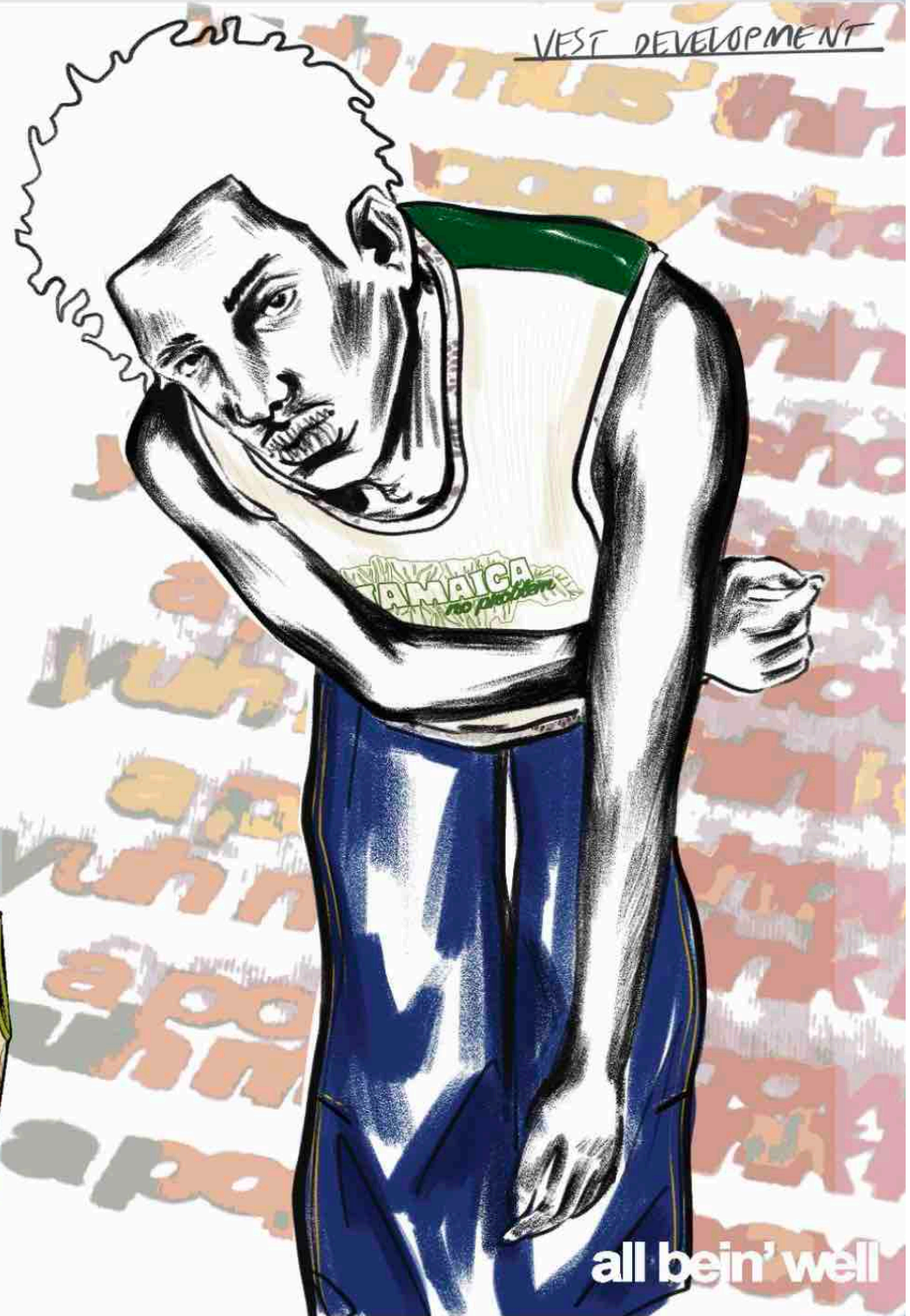
Elasticated waistband

4CM



Fabric:
Denim col White
no gathering

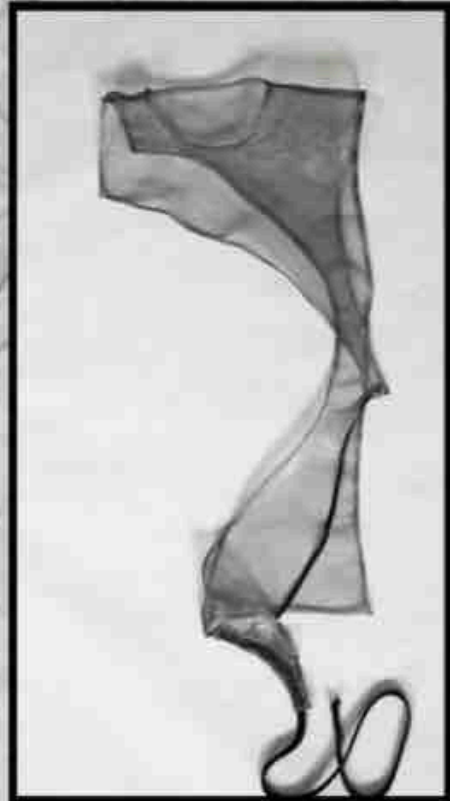
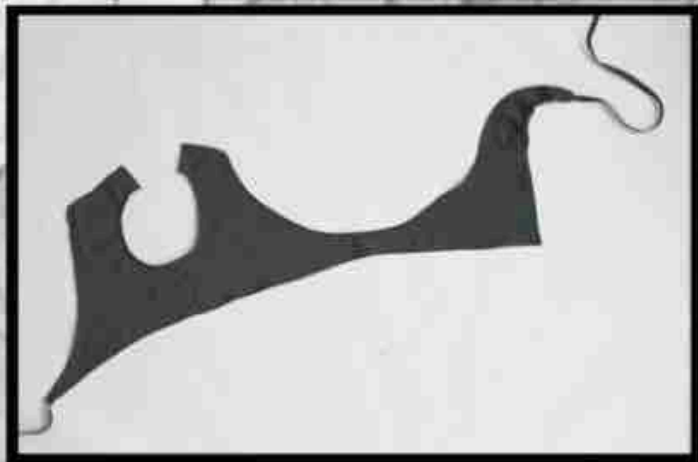
all bein' well













MY WORK PRIMARILY FOCUSES ON THE WOMAN, A ROMANTICISED IDEA OF 'THE WOMAN I WANT TO BE,' SETTING OUT WITH THE INTENTION TO MAKE PEOPLE SAY, 'EVERYBODY WANTS TO BE HER,' CENTRAL TO MY VISION IS A STRONG SENSE OF NARRATIVE AND NOSTALGIA, A THROWBACK THROUGH THE DECADES REVEALS MANY OF THE ICONIC CELEBRITIES THAT I REFERENCE FOR MY DESIGN PRACTICE. THIS SEARCH FOR AN ALLURING FORM OF CELEBRITY FROM THE PAST, SPEAKS TO A DESIRE FOR ESCAPISM FROM THE TROUBLING CLIMATE WE CURRENTLY FIND OURSELVES IN.

THE NARRATIVE FOR MY COLLECTION FOCUSES ON 'THE GIRLFRIENDS OF MICK JAGGER,' EXPLORING THE WARDROBES OF THE ICONIC WOMEN IN HIS LIFE AND THE MAN HIMSELF, BORROWING A CLASSIC MENSWEAR SENSIBILITY FOR CUT AND CONSTRUCTION AS IF BIANCA HAD WITH NONCHALANT EASE, THROWN ON ONE OF MICK'S STAGE JACKETS AND GONE ABOUT HER DAY. IT FOCUSES ON A KIND OF EFFORTLESS POWERFUL DRESSING, WITH THE RULES OF THE GARMENTS AND DETAILS ROOTED IN CLASSIC REFERENCE BUT WITH A CONTEMPORARY, FEMININE AND REBELLIOUS DRESS SENSE TO BREAK THESE CODES.

CONSTRUCTION WITH SURGICAL PRECISION IS A KEY ENDEAVOUR IN MY PRACTICE. TIMELESSNESS, QUALITY BRITISH MANUFACTURED MATERIALS AND BESPOKE DETAILS FORM THE KEY PRINCIPLES OF SUSTAINABILITY WITHIN MY DESIGN AESTHETIC. TO DESIGN A LASTING QUALITY GARMENT IS TO MAKE A SUSTAINABLE ONE, WITH A FOCUS ON THIS TO TRANSLATE WITH MY VISION FOR THE MODERN WOMAN MAKES FOR AN UNCOMPROMISING APPROACH TO DESIGN FOR THESE UNCERTAIN TIMES.



JOSHUA LOCKWOOD

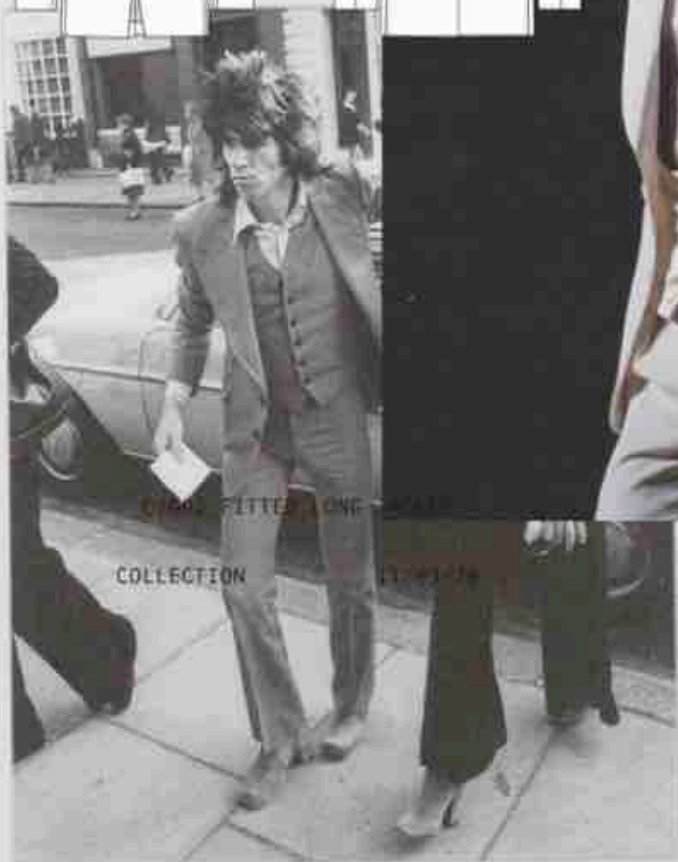
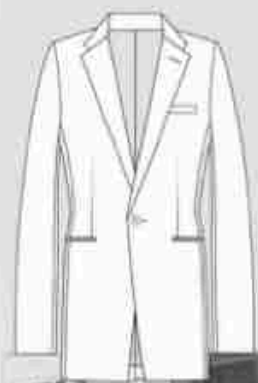


SIX LINES EMBROIDERED

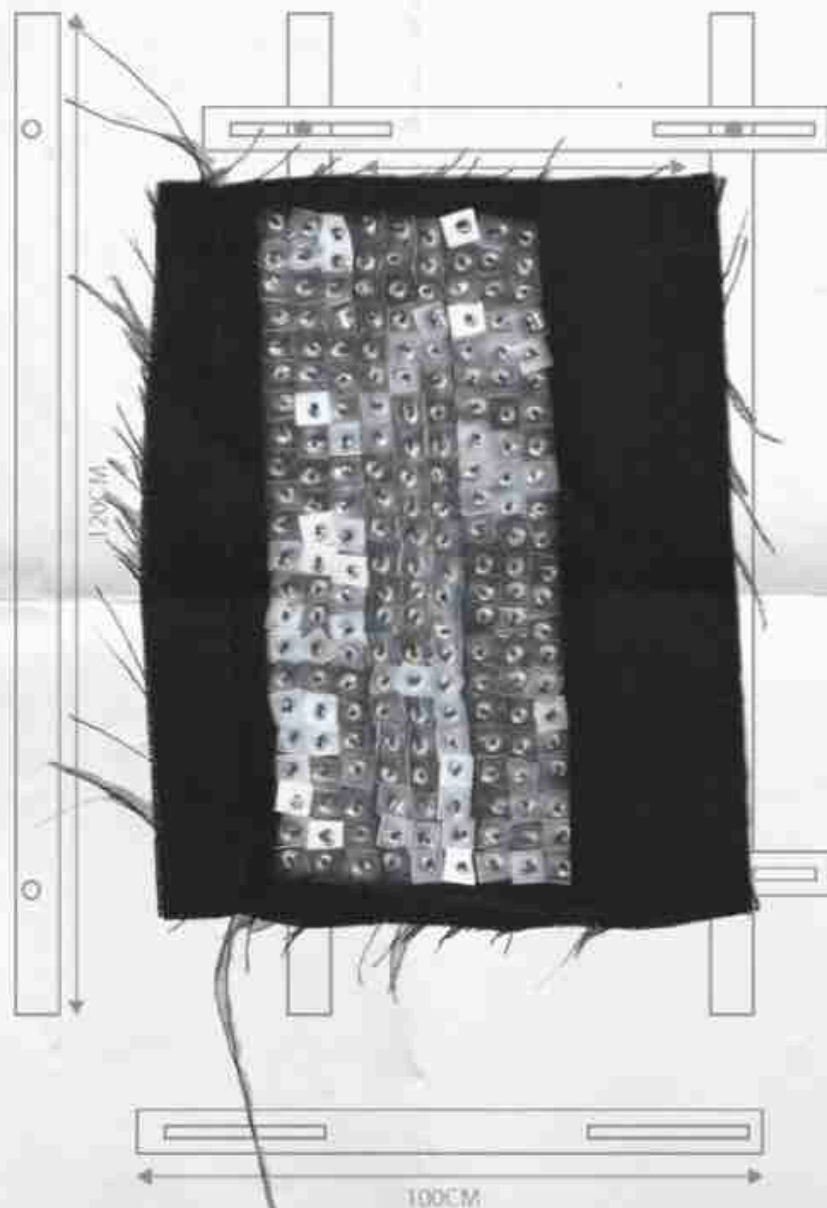
COLLECTION

20/02/20





MOUL BRATHEX 21605M



40Z WP WADDING

80Z WP WADDING

ORGANIC CABLE KNIT

WADDING

WP MATTE PVC

BALISTIC CORDURA

HEAVY SCUBA

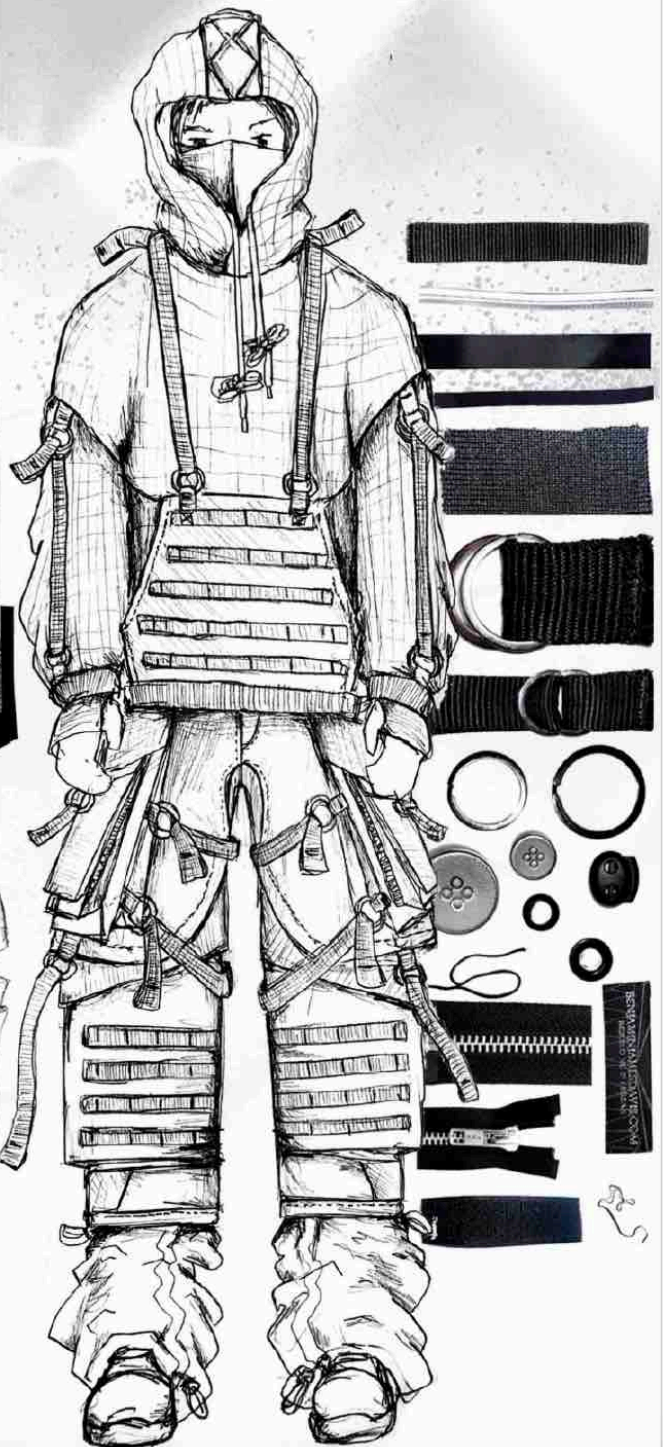
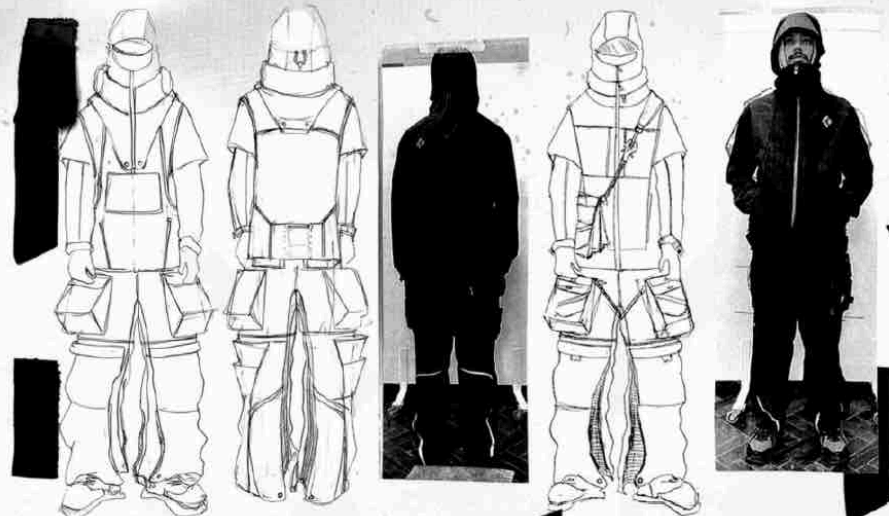
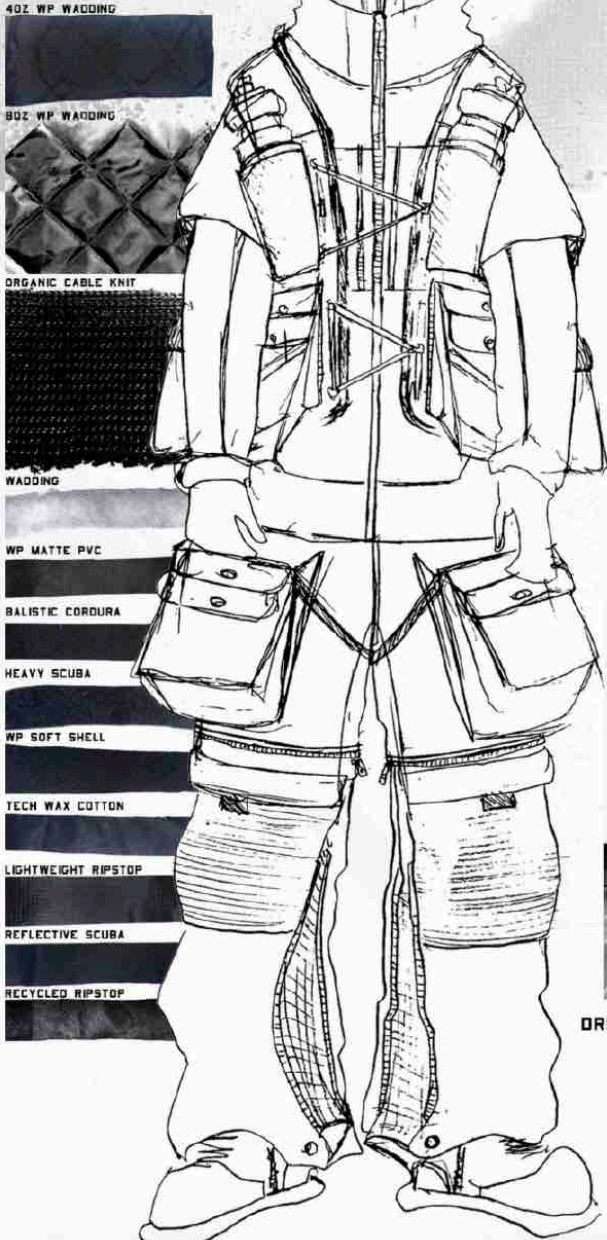
WP SOFT SHELL

TECH WAX COTTON

LIGHTWEIGHT RIPSTOP

REFLECTIVE SCUBA

RECYCLED RIPSTOP



DREADNAUGHT LOOK 1

MORTAL COIL
BENJAMINJAMESDAVIS.COM

BENJAMIN JAMES DAVIS
DESIGNER



TRANSMOGRIFIER LOOK 4

MORTAL COIL

BENJAMINJAMESDAVIS.COM