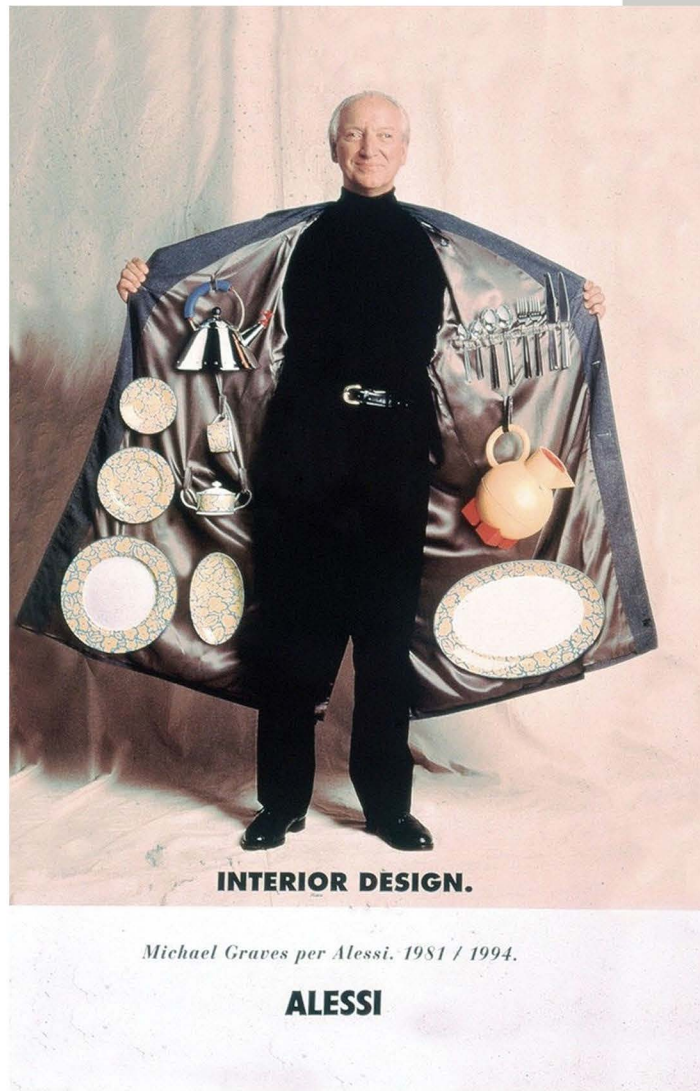


An exploration of the home.
From the mundane things
to the more personal things.
Trying to see a different viewpoint and use for
these overlooked objects,
and show they can be used in other ways and be
seen with more appreciation.
A toothbrush, a curtain, a wooden spoon, a teacup,
a shower mat, a remote control and a record.
Simple, functional, overlooked objects, used in a
unusual context to allow us to
see the beauty and preciousness that
comes with our personal belongings.

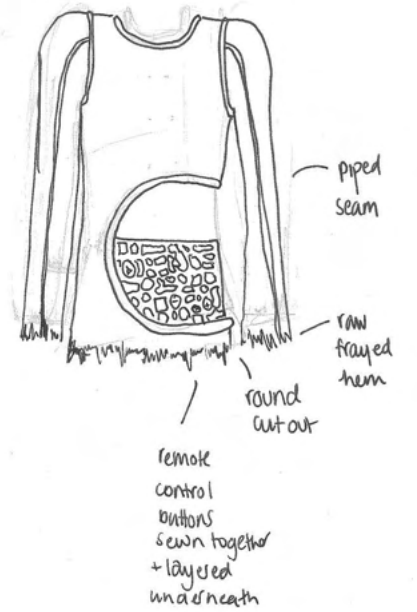
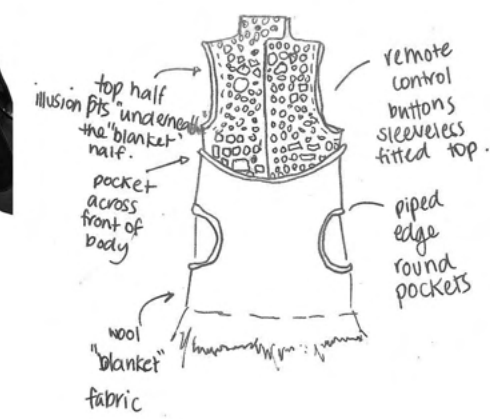
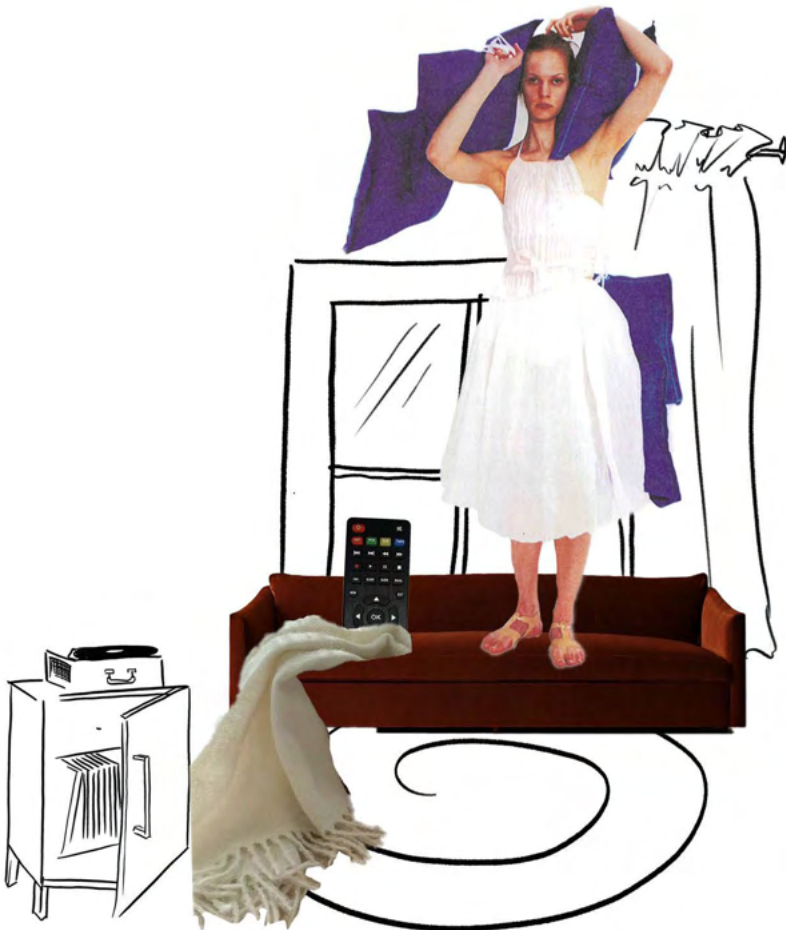




Soft wool and rubber buttons

I think the contrast between soft wool and rubber buttons work well

I think it conveys the concept of a lost remote in a sofa well.







draped bedsheet fastening ends



draping asymmetrical
bedsheet plaquettes



I don't think
this works well
as it looks really
messy and
unflattering

I think this
was successful
in creating the right shape.
less asymmetric

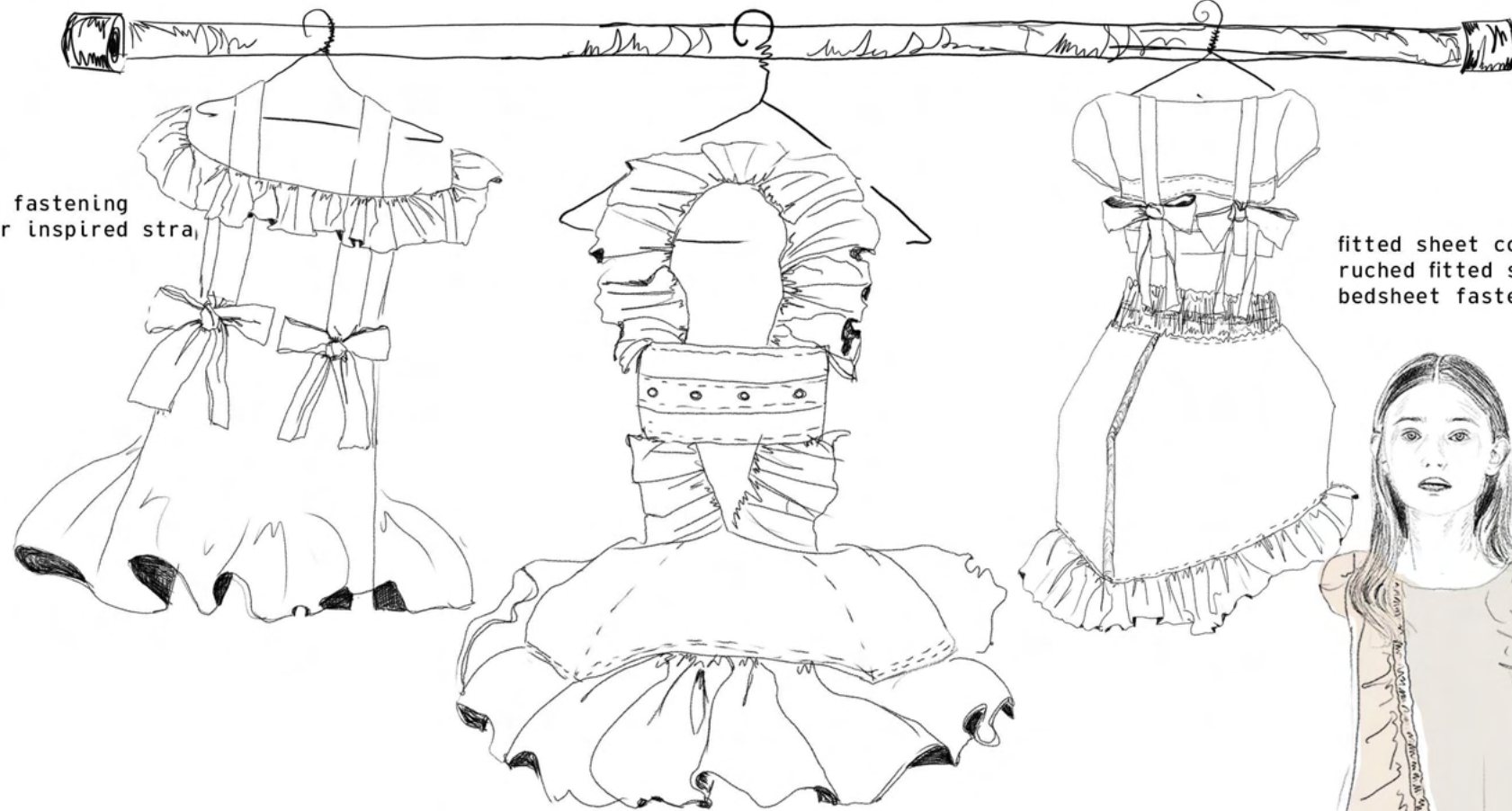
Slip dress
made of
bedsheet
plaquettes



apron
inspired
back.



Bedsheet fastening
suspender inspired str



fitted sheet corner shaped skirt
ruched fitted sheet corner waistband
bedsheet fastening suspender inspired straps

pillow case shaped skirt
bedsheet fastening chest cover
Ruffle bedsheet, suspender inspired straps



Curated Living

Draping
with
cutting



Start of the End



mini slip dress made of toothbrush holders



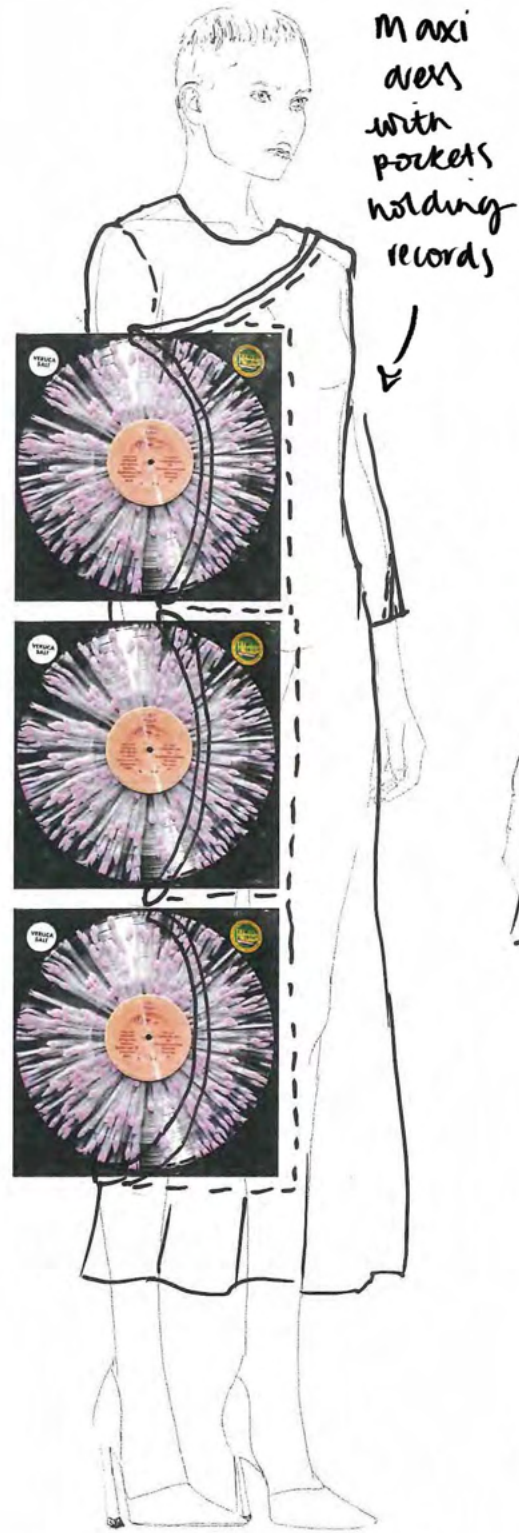
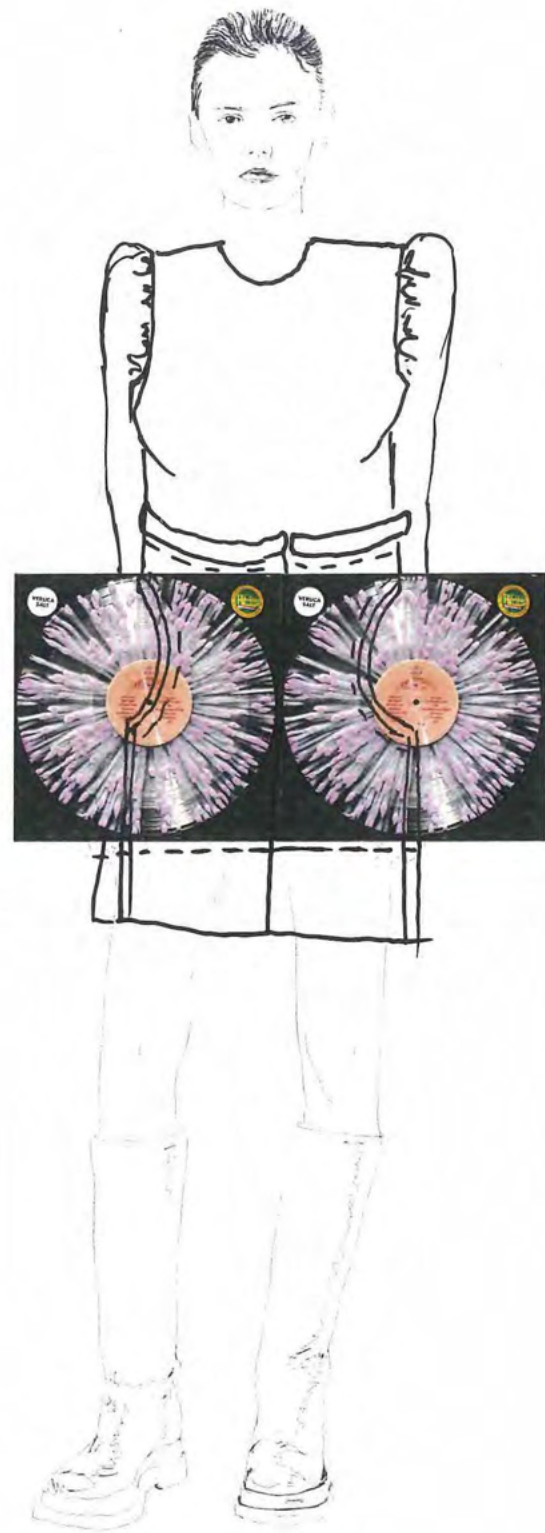
midi shower mat fitted shift dress



repeated soap dispenser top glued on

long fitted bath mat



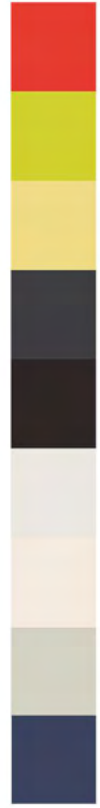


vinyl case as a pocket practice

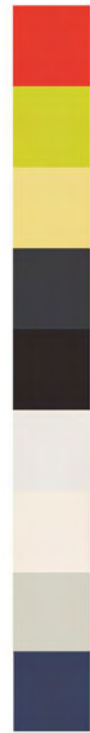












Final

Lineup

