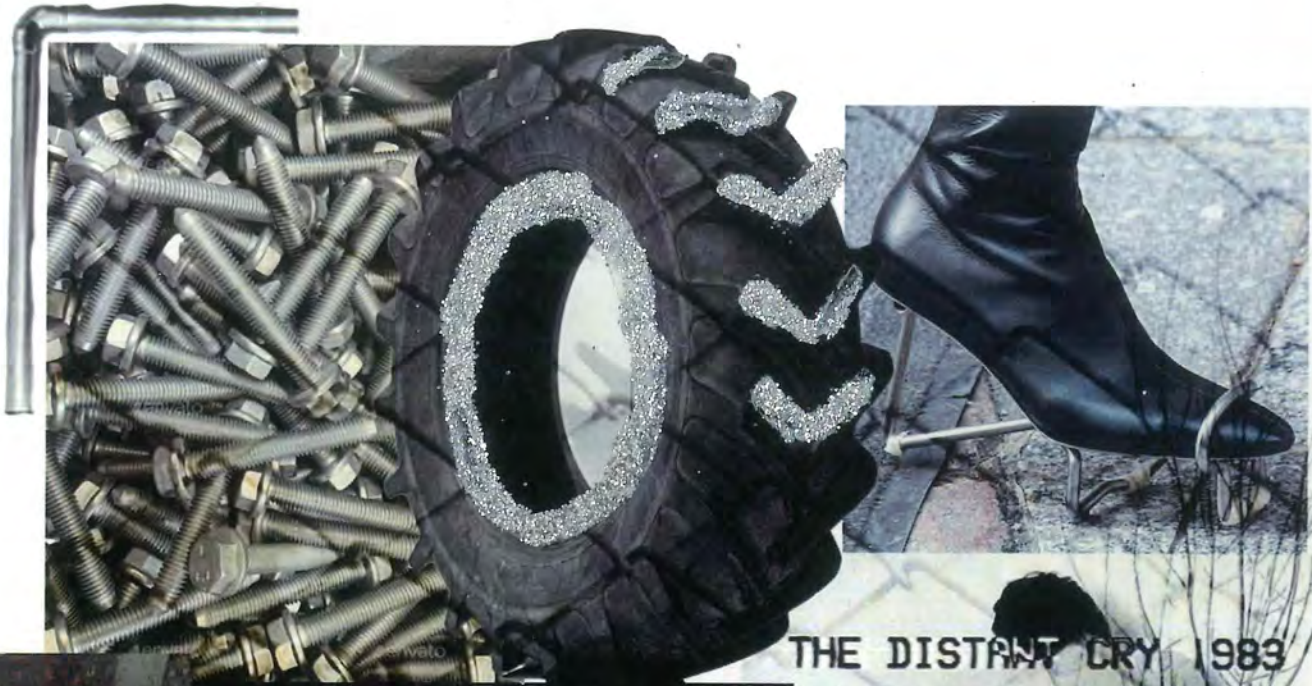
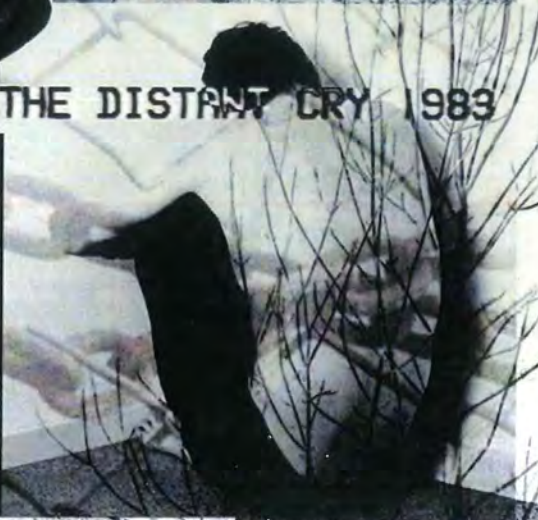


The concept of this collection comes from my experience of what it was like growing up at my grandmas farm and how the deconstruction of the old farm has effected me, this will be shown through shape and colour, I will then be exploring the reconstruction and rebirth of the farm.



THE DISTANT CRY 1983



ULTRA BLACK
by Nas
Created by
PANTONE®



METALLIC SHIMMER
PANTONE®
20-089 TPM
Silver Plate



PANTONE®
16-3917 TCX
Chiseled Stone





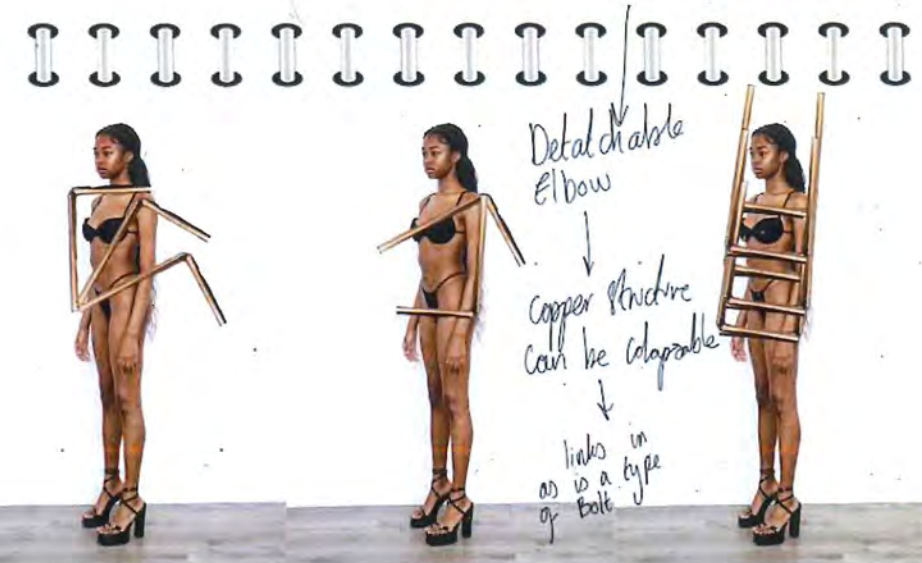
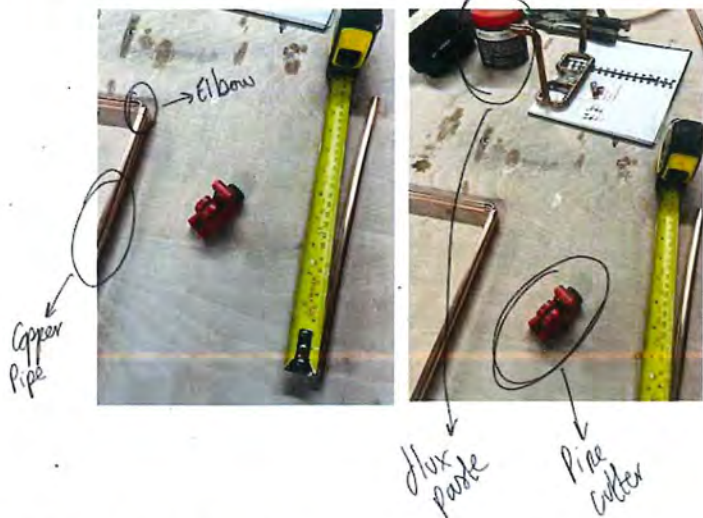
Scaffolding is an important material in the construction process I would like to find a way to incorporate this into my final collection



Spray painted to match scaffolding colour! Wheel trimmer was the closest match

PROCESS

- Copper pipes were used (10mm) and a pipe cutter is needed to cut the pipes to the desired length
- Ends & elbows are needed to attach the pipes together
- To do this you need wire wool to clean the pipe first, then dip the pipe into flux paste
- After that solder wire is needed and a blow torch - Melt some solder wire into the elbow then add in the copper pipe still while the blow torch is on, add more solder avoid the sides if needed
- Once cool wire wool is needed again to get rid of any sharp solder
- Repeat process & paint



open neck



Added Gathers
Eyelets Added
to attach

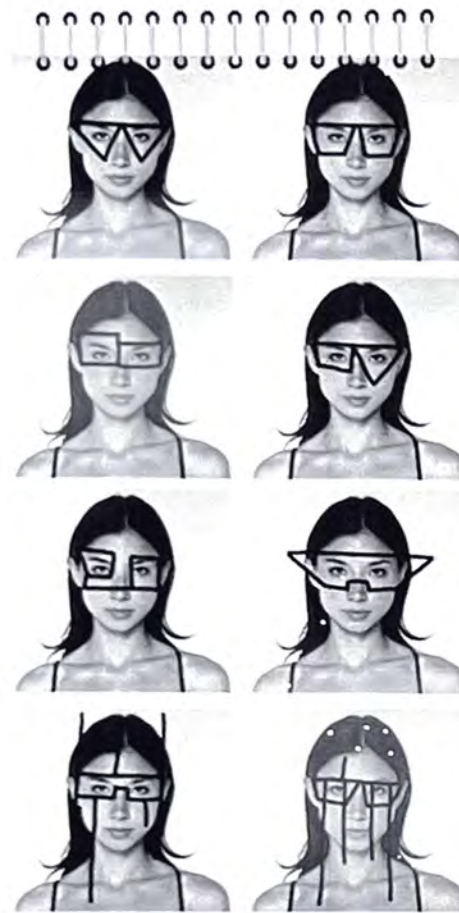
dropped
over metal
poles

Metal
neck
sheer fabric
added on top
and attached

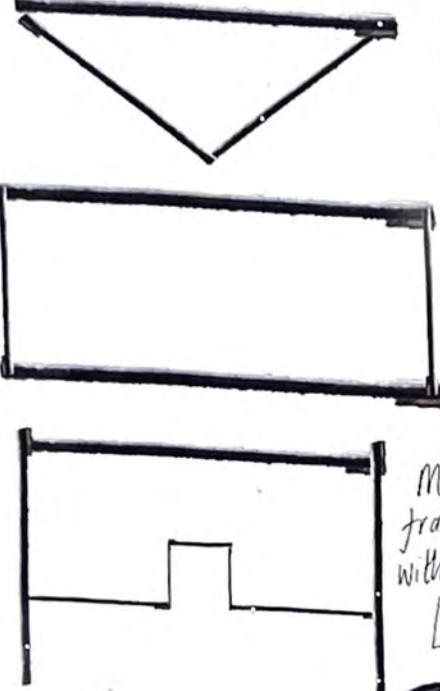


metal structure
added Gathers
attached
by eyelets
Eyelets welded
onto meta to
secure shape

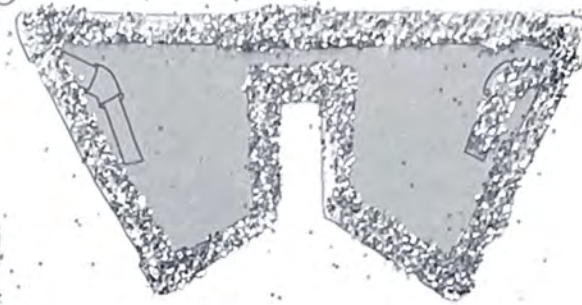




Initial Ideas For Structure



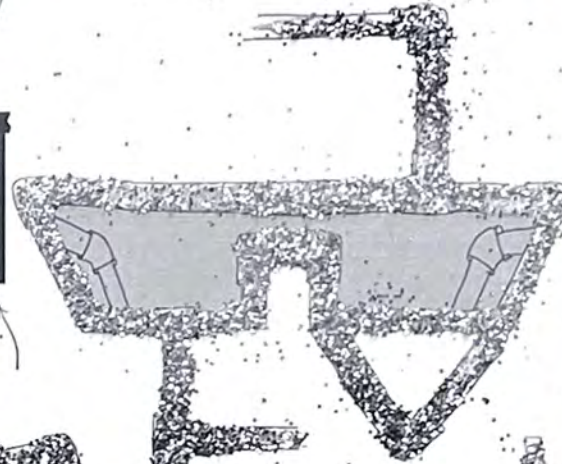
Pipe connectors also know as elbows in the industry



Metal Structure frame connected with pipe connectors

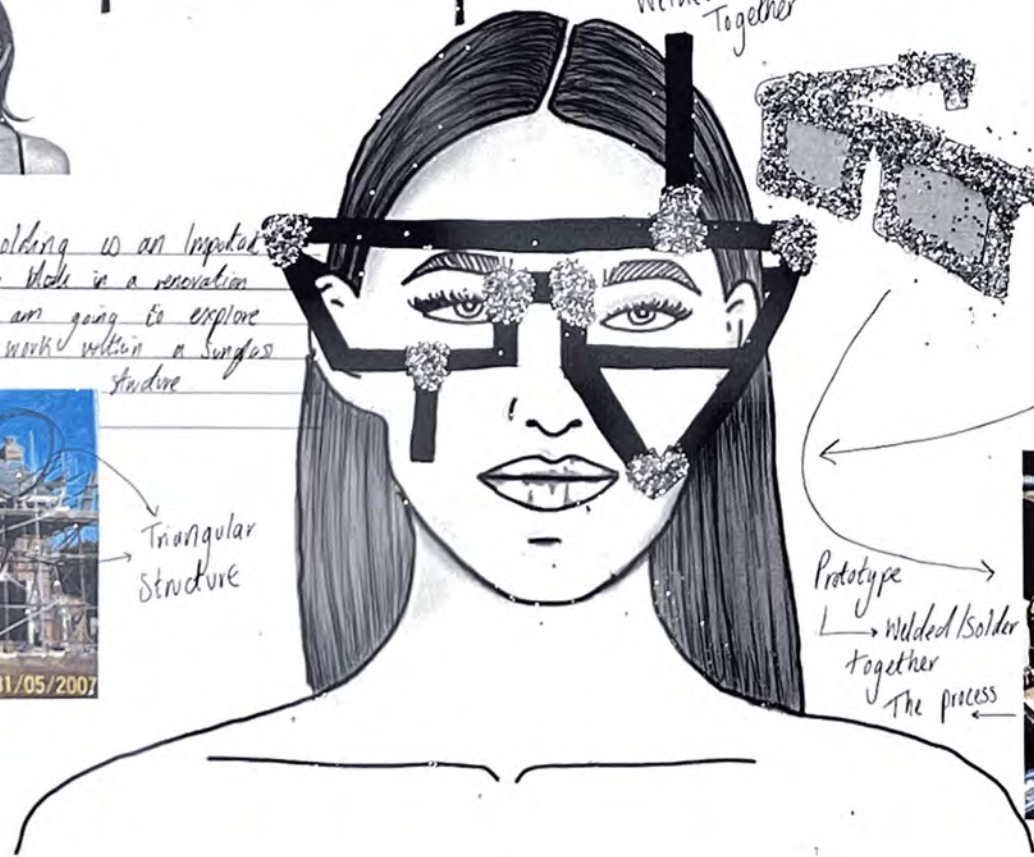


Then welded together



Scaffolding is an important building stage in a renovation so I am going to explore metal work within a sunglasses frame

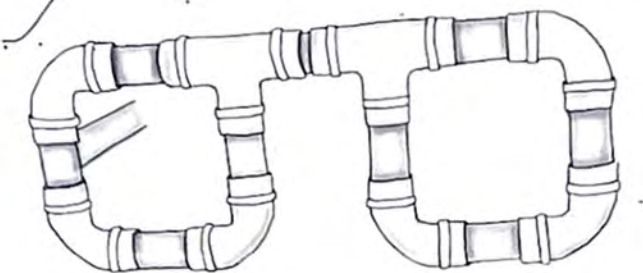
Triangular Structure

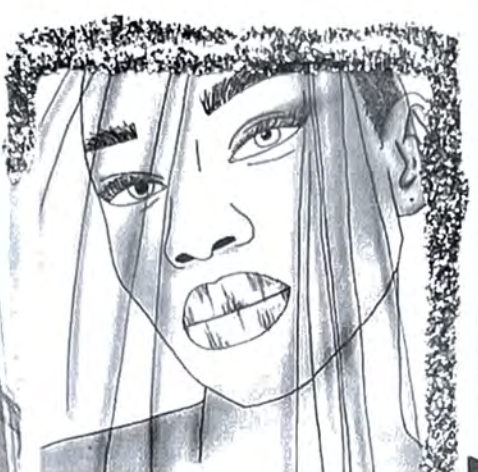


Prototype
Welded/Solder together
The process



What the glasses looks like on a model





Wetted face headpiece



05/06/2006

I'm taking the bundle from the falling bricks to explore different fabric which I found it could include - being the thing, as a headpiece or as part of a garment.



Not finished or scoop



Technical Drawings



Gathered top



Shoulder gather setting



Gathered half side of breast coat



Fabric wetted sleeves



Not head piece attached to a headband/hat





Here they have set a metal foundation down to the floor and are adding concrete on top - will play with this idea but by adding fabric

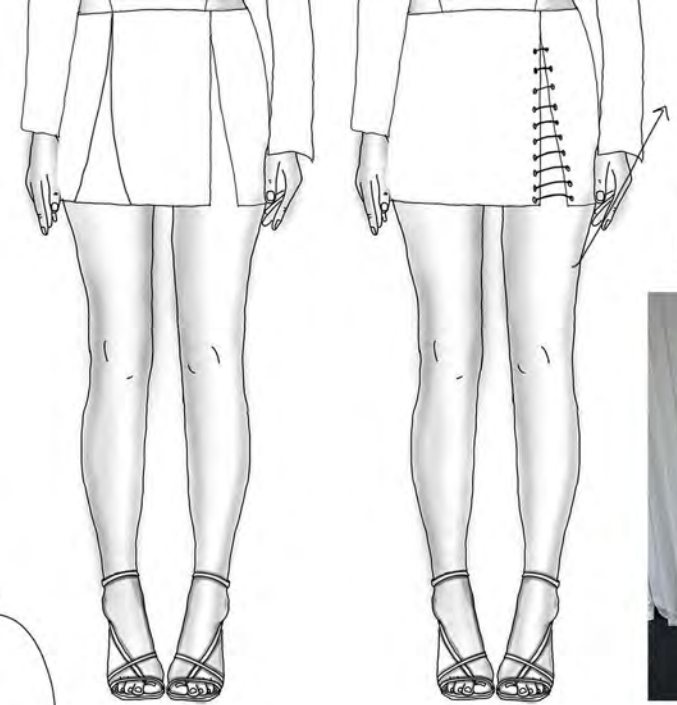
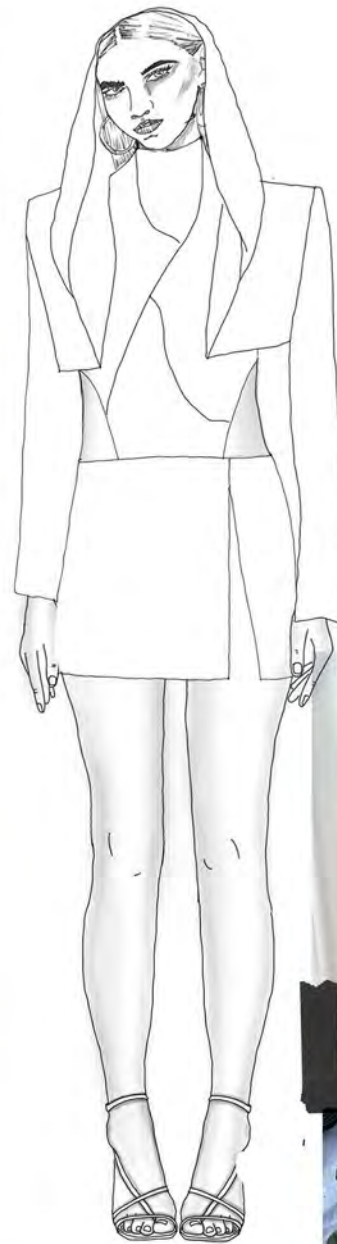


Hard workmanship was always portrayed at the farm where I grew up so I want this to be represented in this collection



Before

After Cement



Made first then dipped into cement

Cement made a different way



I want to incorporate cement into my collection I have taken inspiration from the process of cement plant pots as they were all around the farm. To make I dipped Sweetshirt material in water then into cement mix, got that I draped it over a cling film mannequin to mold the shape

I've used expanding foam on the mannequin and then carved out the desired shape. This is a good technique as I will be able to achieve a 3d structure from molding to the body

Inspiration



Process:

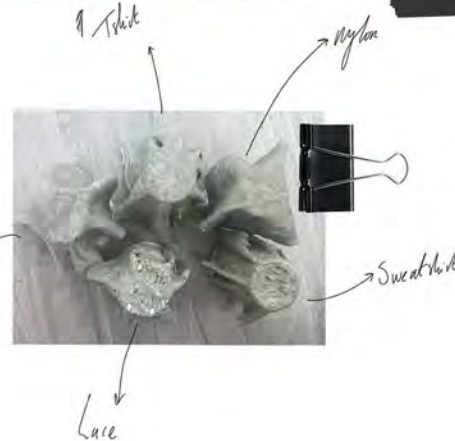
- Make a fully wearable shirt or garment
- Add zippers
- use the cement method
- Kevlar to harden and make durable
- Spray paint cement texture
- Add ties down the side to wear

zippers?
More elegant ways to tie

Ribbon



Cement Experimentation

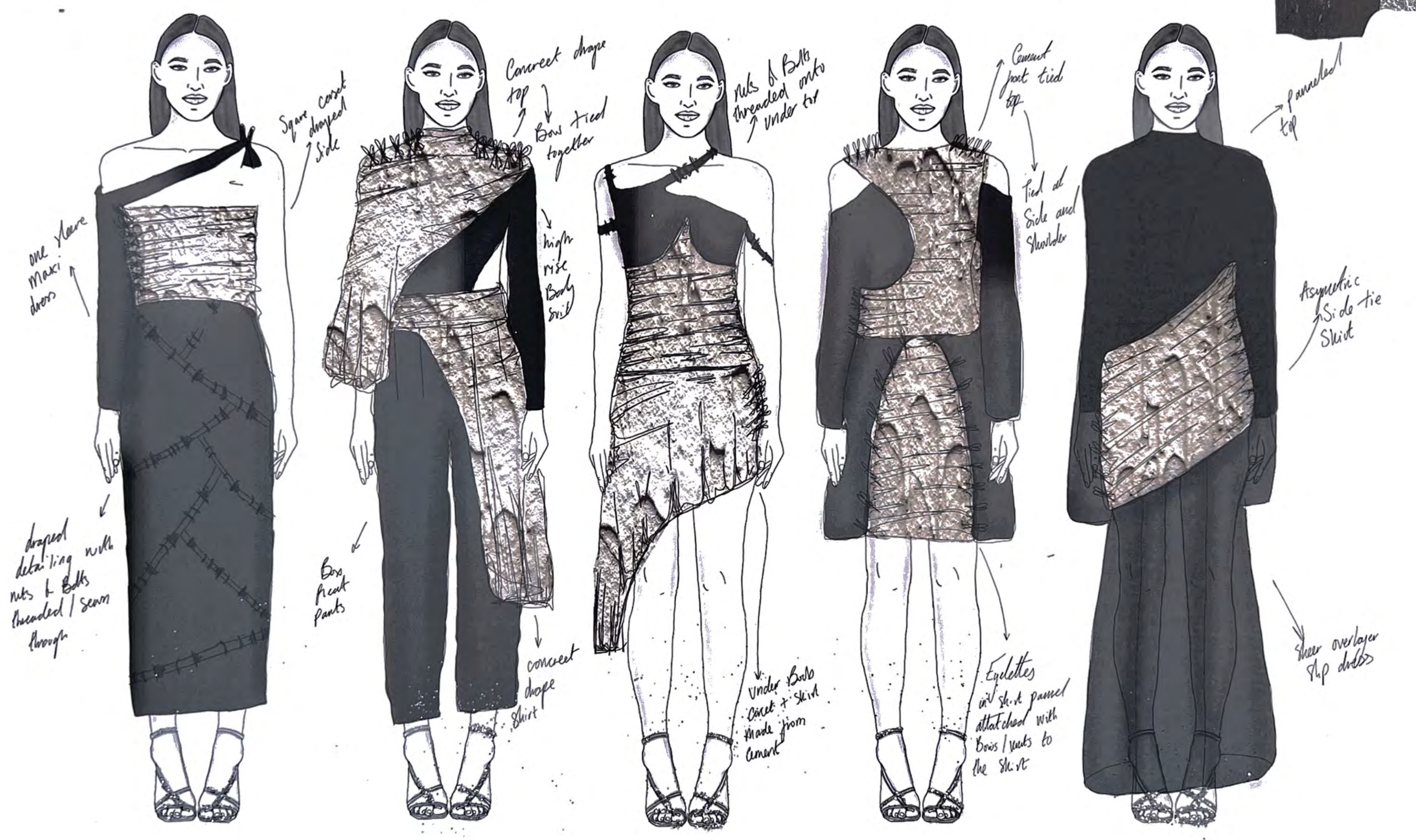


1/4 inch

Nylon

Sweatshirt

Lure



one sleeve
maxi
dress

square corset
draped
side

concrete draped
top
↓
Bows tied
together

Nuts & Bolts
threaded onto
under top

concrete
just tied
top

paneled
top

draped
detailing with
nuts & bolts
threaded/sewn
through

high
rise
body
suit

Tied at
side and
shoulder

Asymetric
side tie
skirt

Bare
feet
pants

concrete
draped
skirt

Under Bobs
Concrete + skirt
made from
cement

Eyellets
in skirt panel
attached with
bows/nuts to
the skirt

sheer overlay
slip dress



Smoke was a huge part of the deconstruction
So its an important aspect of my
concept so I will explore in ways this
can be portrayed - represents fallen bricks



layered sheer?



sheer coat

lace to give texture



Smoke like fabrics

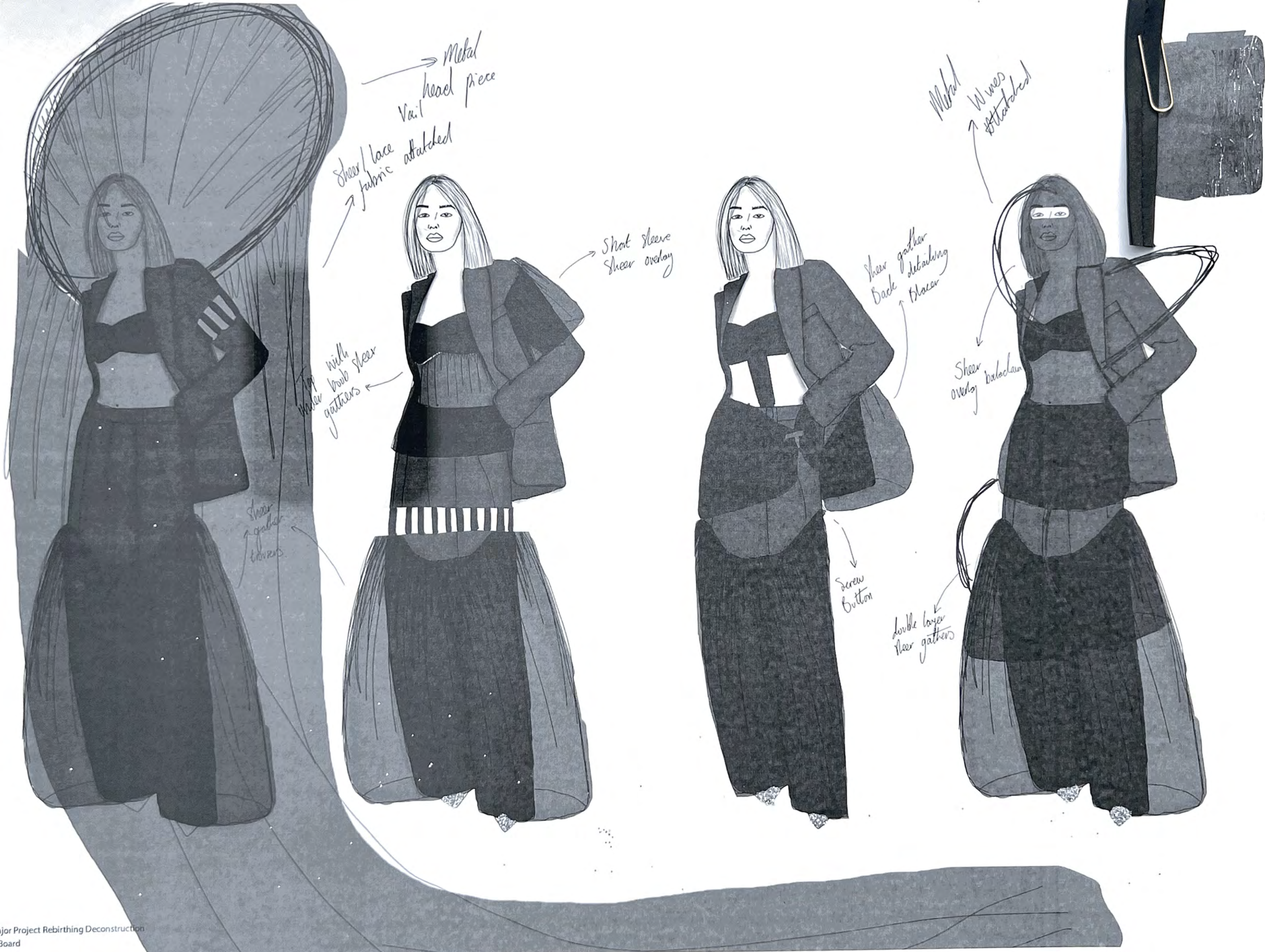
draped sheer fabric



sheer headpiece

Added metal to hold structure





→ Metal head piece
Vail
Sheer/lace fabric attached

Short sleeve
Sheer overlay

Sheer gather
Back detailing
Blazer

Metal
Wires attached

Top
Waiver
with
bow
gathers

Sheer
gather
blouses

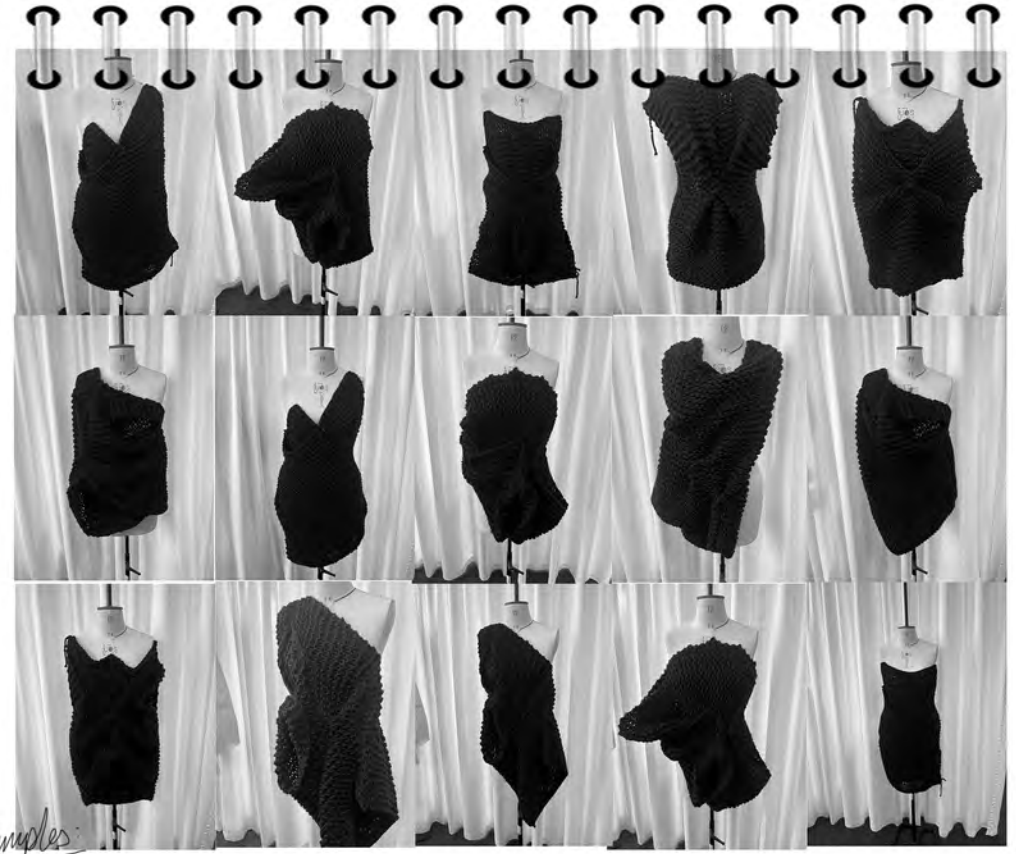
Screw
button

Double layer
sheer
gathers

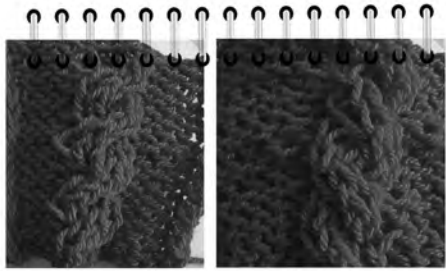
Sheer
overlay
balochan



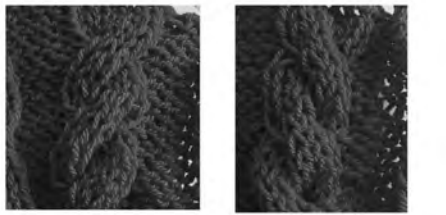
When my Grandad was out working on the farm my Grandma taught me to knit and soon in these pictures above so I'd like to incorporate this skill into this collection



Thin Knit Samples:



C4B C4F



C6B C6F



Diamond Cable Knit one part one

Thick Knit Samples:



C4B C4F

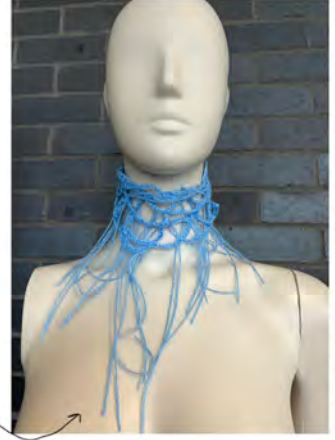


C6B C6F



Knit one part one

Different types of Knit:



hanging thread representing falling Bricks

headpiece?



Gathered overlaying back



I remember always helping out where I can, I am taking inspiration from the sand structure for potential shape and silhouette as this shape will add volume



Added belt Embroidered



Strip of gathered fabric Panels gathered



Gathered fabric in the shape of the hill multiple



low waistcoat?

Elegant back cut

2 piece?

Adding strips of fabric as a foundation in holding the dress together looks like a 2 piece



Sand hill shape using a large petticoat



Big Silhouette



Pleated then gathered

Looks like the "Skirt" is falling down linking with the deconstruction

Added petticoat for shape



Accessories

