



**DIVERSITY**  
**APOCALYPSE**  
**FINAL MAJOR PROJECT**  
SPRING/SUMMER '24  
ELLIE WRIGHT



# DIVERSITY APOCALYPSE

THE TIMES  
Day the world ended

GAY IS GOOD  
I AM A LESBIAN AND SHOULD BE TREATED AS A HUMAN  
I AM A LESBIAN AND BEAUTIFUL

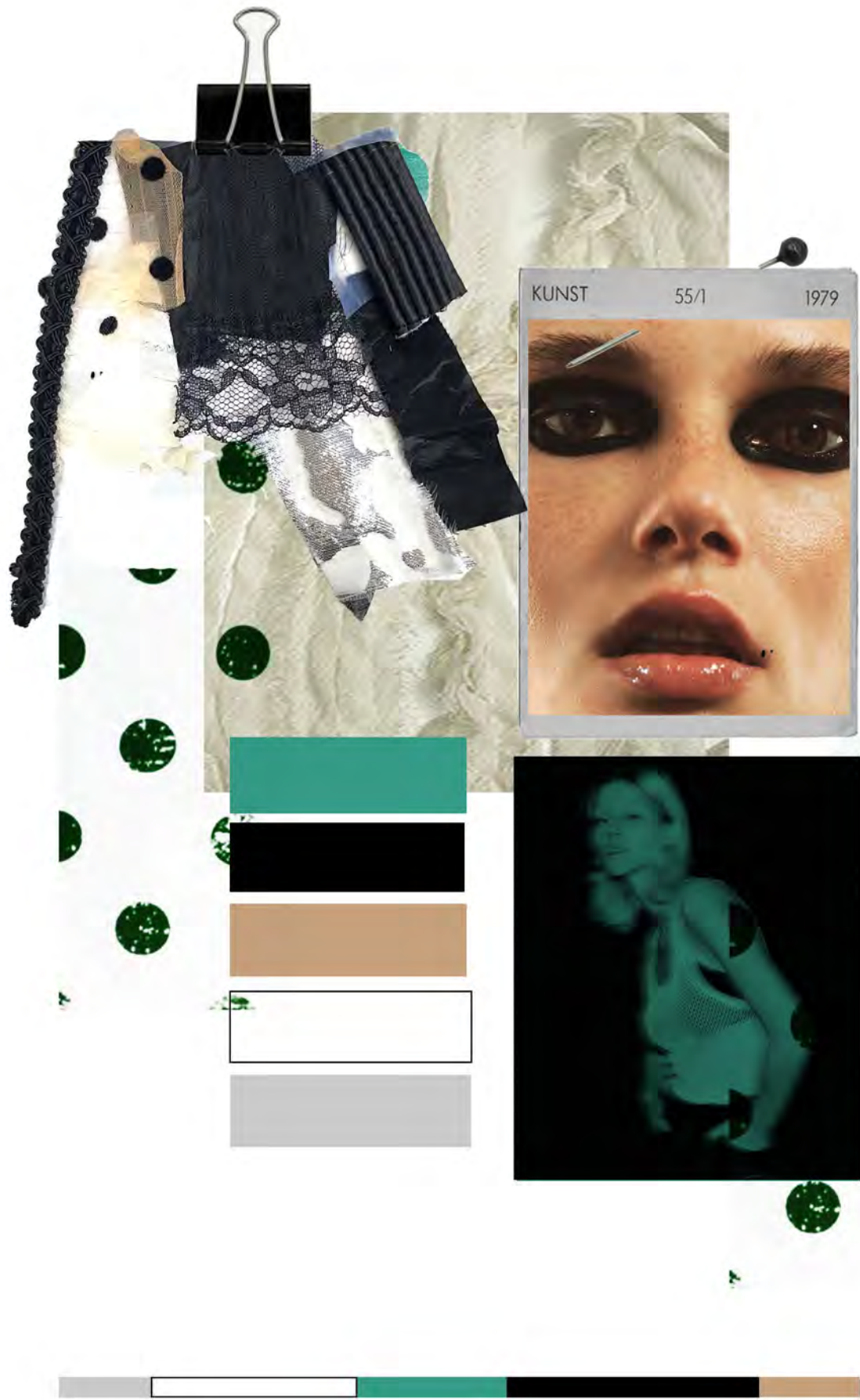
RIOT!

I AM JUST A GIRL WITH IDEAS

we gonna start the revolution

**CONCEPT**  
FINAL MAJOR PROJECT  
SPRING SUMMER '24  
ELLIE WRIGHT

IMAGINING A WORLD IN WHICH THE ANGSTY FEMINIST PUNK ROCK MOVEMENT RIOT GRRL TAKES OVER THE WORLD. THE REBELLIOUS SPIRIT OF THE MOVEMENT GRIPS THE WORLD. "DIVERSITY APOCALYPSE" AIMS TO REVIVE THE PERSONALITY AND MENTALITY OF RIOT GRRL REIMAGINING IT IN TODAY'S CLIMATE. SET IN A POST-APOCALYPTIC BATTLE, RIOT GRRL ARE FREE TO TAKE OVER DESOLATE EARTH AND RESHAPE ITS VALUES ACCORDING TO THEM, REMOVING ARCHAIC NOTIONS OF GENDER ROLES AND TRADITION THIS COLLECTION FUSES THE CORE AESTHETIC OF RIOT GRRL WITH TAILORING AND TEXTILES TO AVOID TYPICAL GENDERED SILHOUETTES ANSWERING THE QUESTION WHAT WOULD RIOT GRRL LOOK LIKE TODAY.



# DIVERSITY APOCALYPSE

**COLOUR AND FABRIC**  
SPRING SUMMER '24  
ELLIE WRIGHT

# DIVERSITY APOCALYPSE

**TRIBE**  
SPRING SUMMER '24  
ELLIE WRIGHT

# LOUD MOUTH

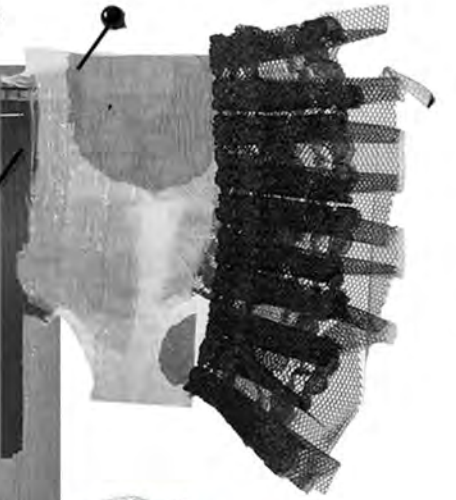


# DIVERSITY APOCALYPSE

ELLIE WRIGHT  
SPRING/SUMMER '24  
RESEARCH



Cups will be backed and pannelled for support.



ACCESSORIZING WITH ARMY BOOTS A REMINDER OF APOCALYPTIC CONCEPT NARRATIVE, KEEPING COLLECTION EDGEY NOR TOO DELICATE



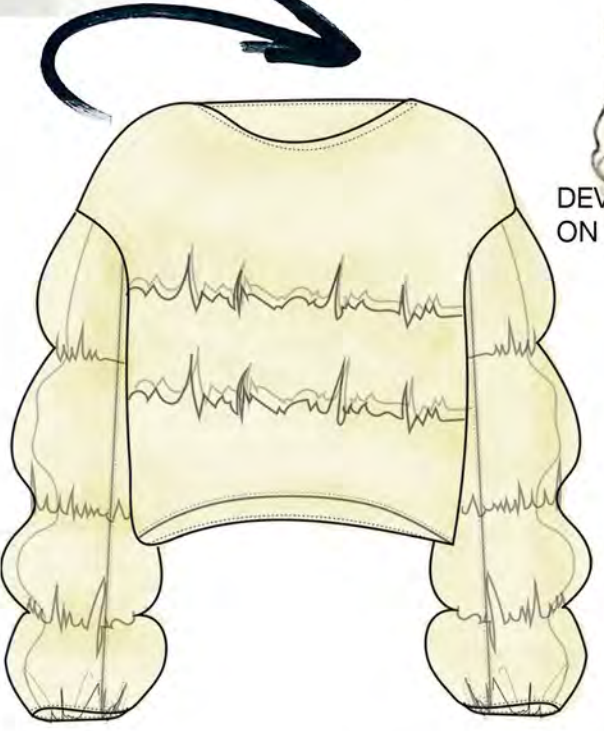
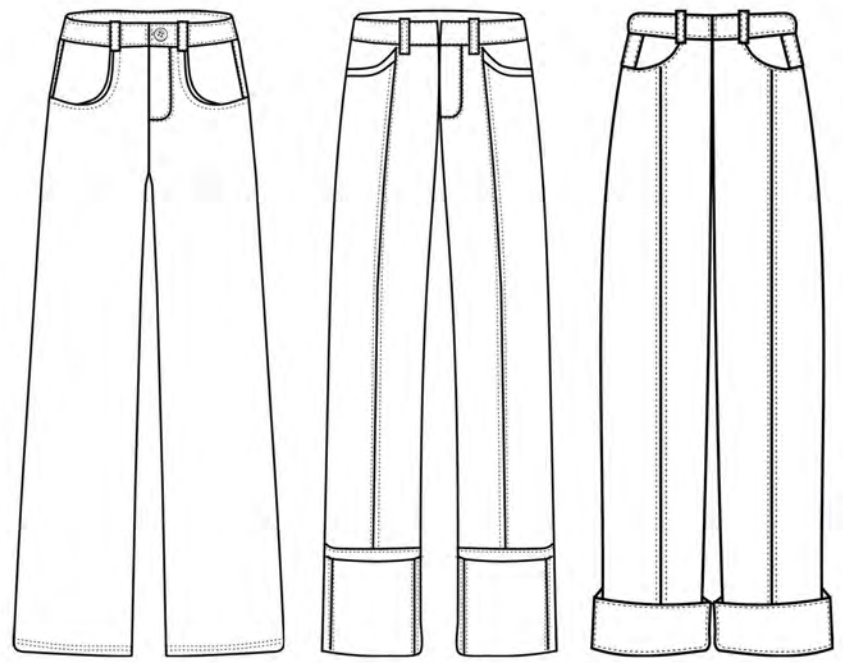
WORKING ON A LONG SLIP DRESS STYE GOWN THAT WILL HAVE SHEER POLKA DOT CUPS. THE CUPS WILL BE BACKED AND PANNELLED FOR BOTH MODESTY AND STRUCTURE. ATTEMPTING TO ACHIEVE A BALANCE OF SOFT FEMININITY WITH A HARSH EDGE THROUGH ACCESSORY CHOICE, A REMINDER OF THE CONFLICTING YET ALL EMBRACING FEMININTY RIOT GRRL STOOD FOR.



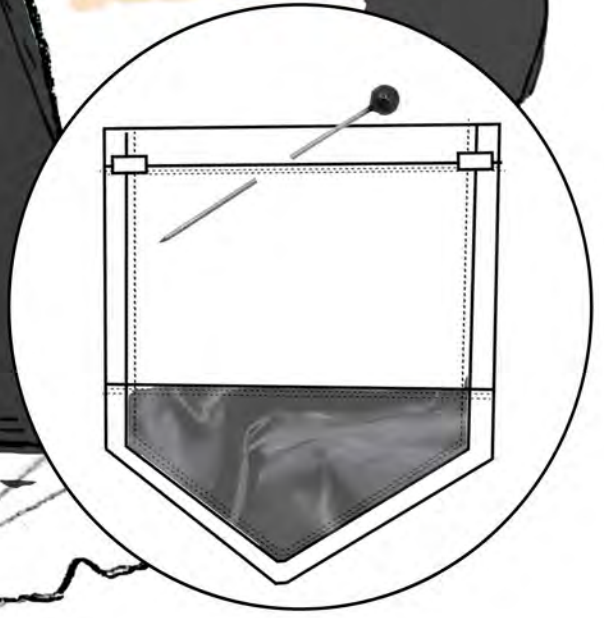
# DIVERSITY APOCALYPSE

ELLIE WRIGHT  
SPRING/SUMMER '24  
RESEARCH

DEVELOPING A LOOK WITH LAYERED SHEER TOPS AND PANTS IN A JEAN STYLE BUT NOT MADE FROM TRADITIONAL DENIM. THE "JEANS" WILL FEATURE CUT OUTS WHERE TRADITIONALLY THE COIN POCKET AND FRONT POCKETS WOULD BE. CHALLENGING TRADITIONAL EXPECTED ELEMENTS OF GARMENTS TO MIMIC THE REBELLIOUS NATURE OF RIOT GRRL



DEVELOPING PLACEMENT OF GATHERS ON LAYERED TOPS



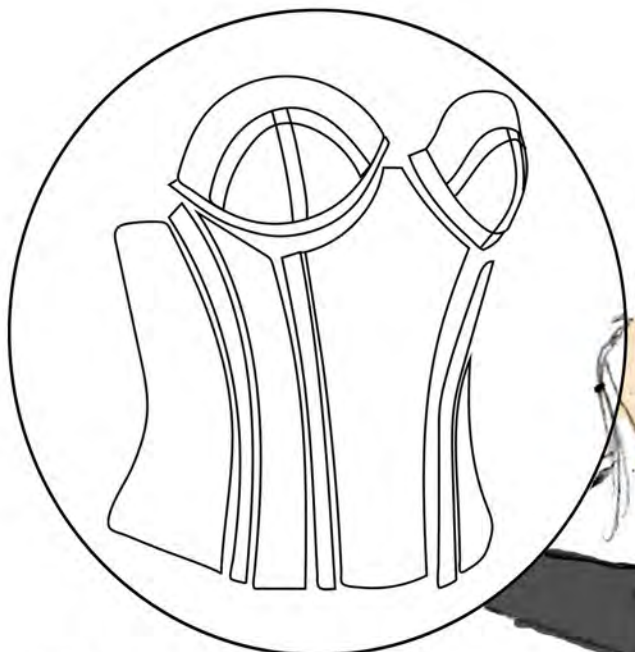
TURTLE NECK WITH INVISIBLE ZIP FASTENING

# DIVERSITY APOCALYPSE

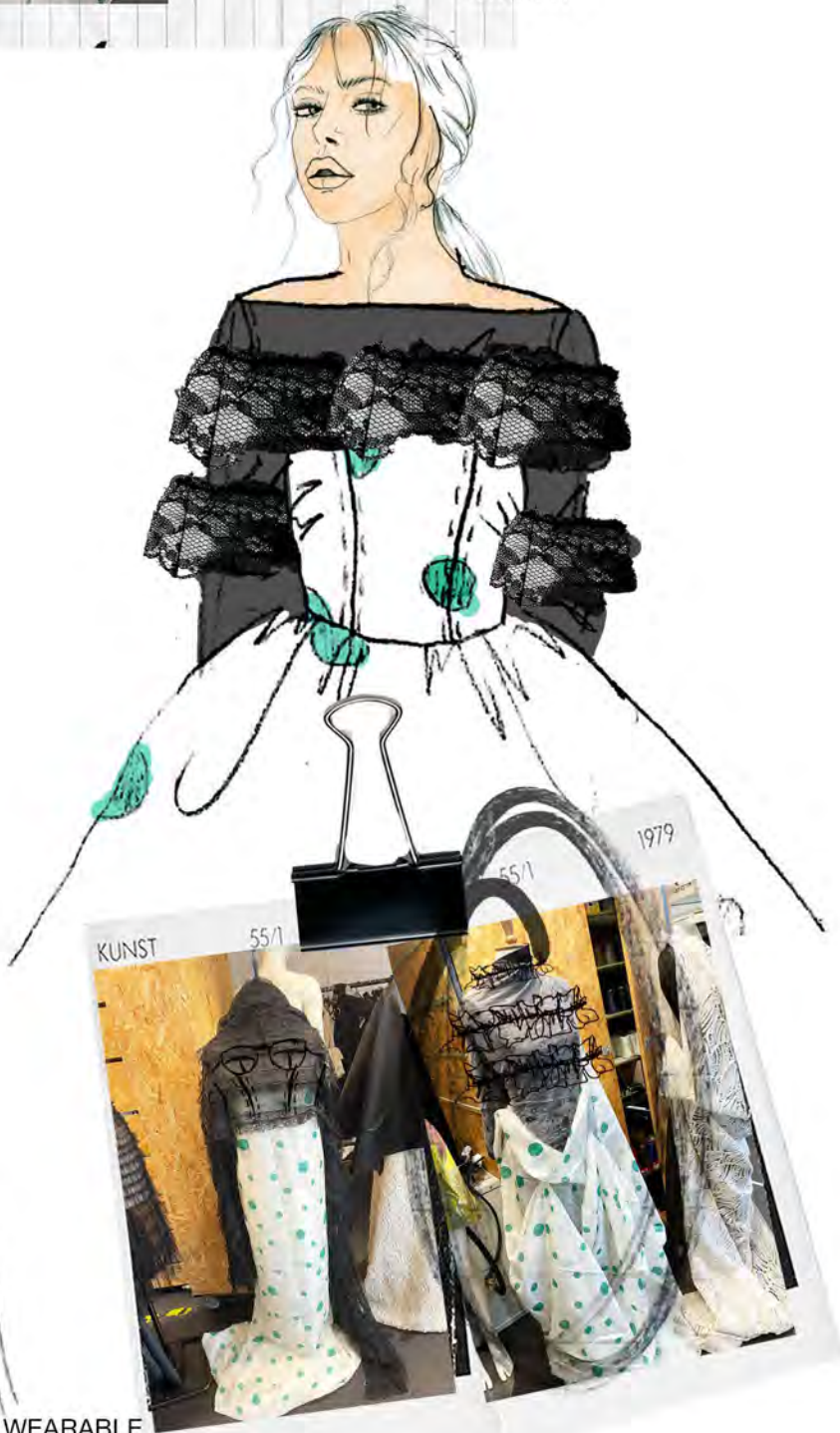
ELLIE WRIGHT  
SPRING/SUMMER '24  
RESEARCH



FABRIC SWATCHES FOR THE LOOK - A GATHERED LAYERED PETTICOAT WILL GO UNDERNEATH TO GIVE DESIRED PUFF SILHOUETTE



THE DELICATE PROPERTIES OF THE INTENDED FABRIC WILL NEED REINFORCING TO CREATE STRUCTURE USING PANNELLING AND BONING IN THE SEAMS

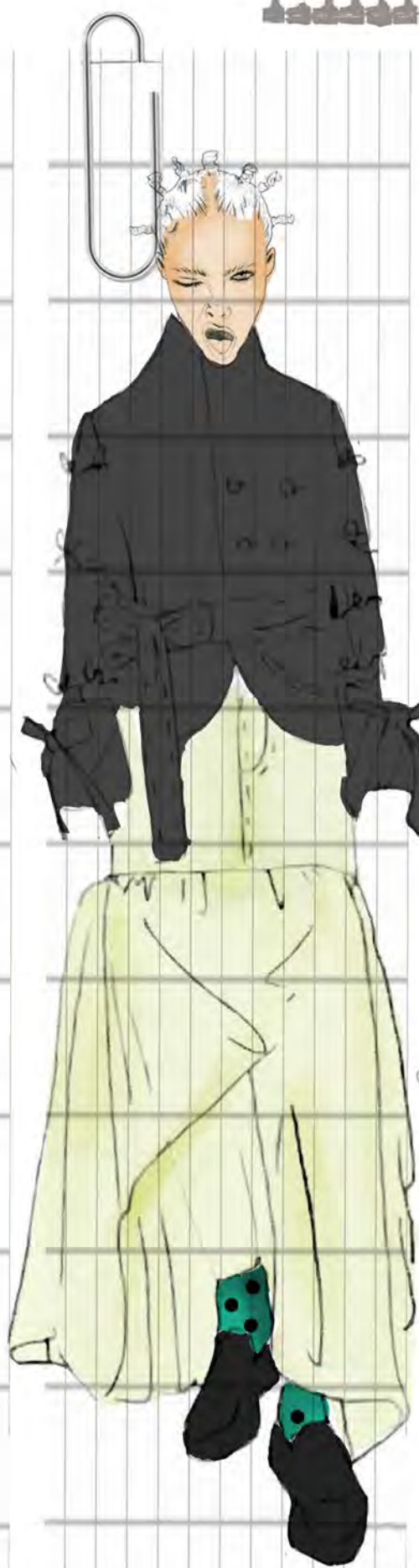


MIXING OF TEXTURE AND NON TRADITIONAL FABRIC TO GIVE A WEARABLE AND REBELLIOUS SPIN ON THE BALL GOWN INCOMPASSING MY CONCEPTS VALUES OF REJECTING RESTRICTIVE DRESS GENDER CODES BY REIMAGINING ARGUABLY ONE OF THE MOST PHYSICALLY RESTRICTIVE GARMENTS.

# DIVERSITY APOCALYPSE

ELLIE WRIGHT SPRING/SUMMER '24  
DESIGN DEVELOPMENT

USING RIBBON COULD ALSO BE A POTENTIAL TECHNIQUE AS TIEING  
MULTIPLE BOWS GIVES THE SAME SHAPE AND FEEL OF BARBED WIRE



TAILORED JACKET AND SKIRT INCOPERATING RUFFLES AND GATHERS INTO THE LOOK FOR VOLUME AND MORE IMPOSINH SILHOUETTE. TO STRAY THE LOOK AWAY FROM BEING TOO DELICATE A TEXTILE TECHNIQUE IS BEING DEVELOPED TO REPLICATE THE LOOK OF BABBED WIRE. DEVELOPING HAND TECHNIQUES SUCH AS WORKING WITH THIN METAL WIRE THAT CAN BE BENDED AND MOULDED INTO SHAPE



# DIVERSITY APOCALYPSE

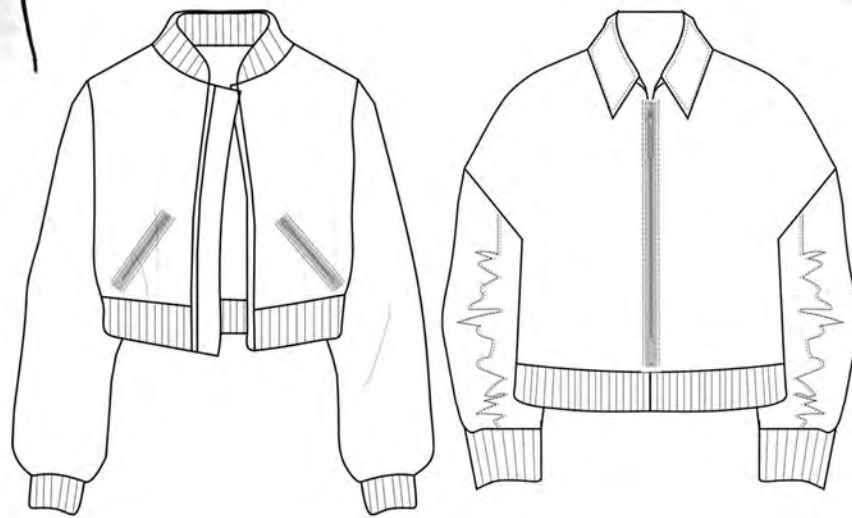
ELLIE WRIGHT  
SPRING/SUMMER '24  
DESIGN DEVELOPMENT



DESIGN DEVELOPMENT SKETCHES ON COLLAGED BODIES



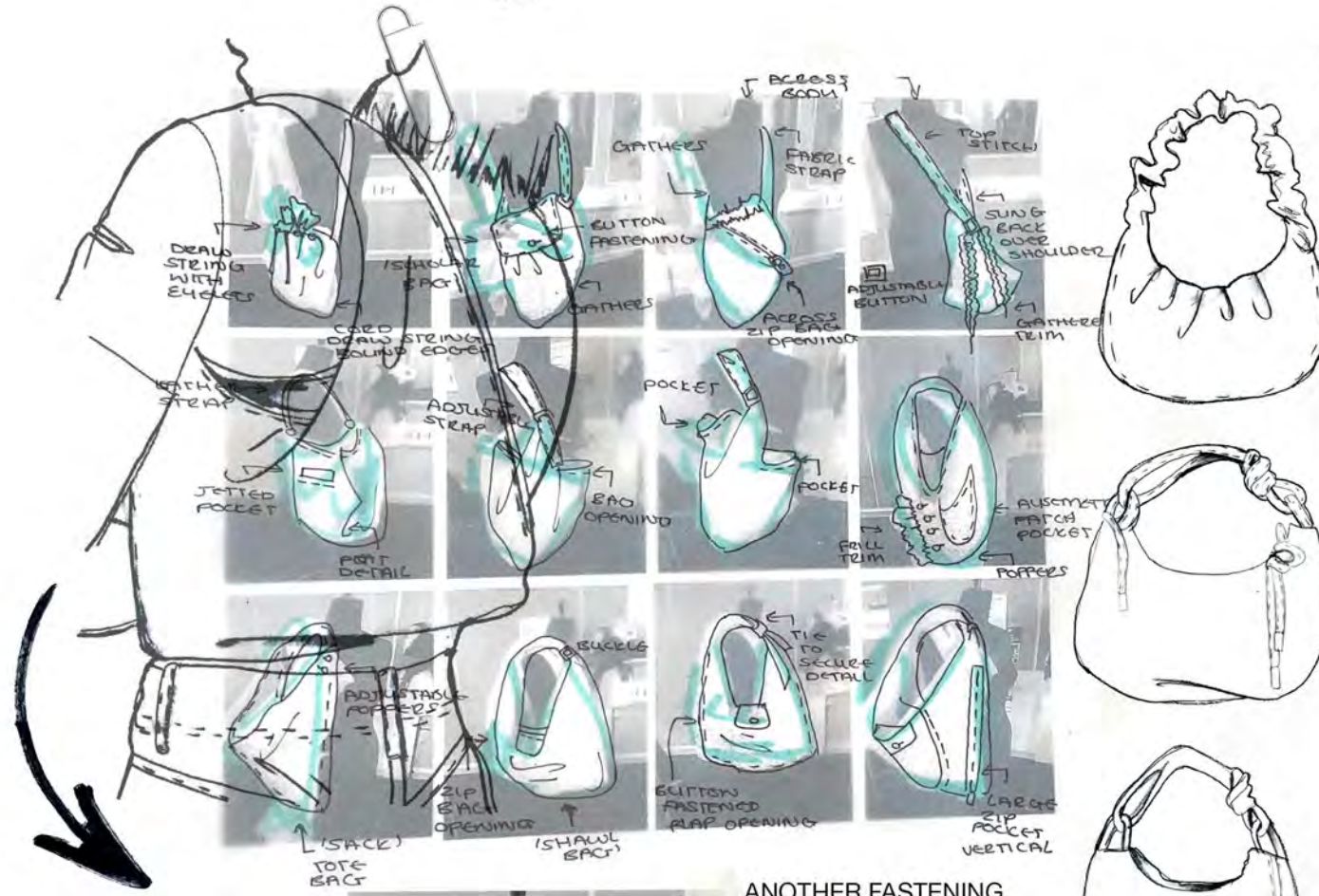
GATHERED IN SLEEVES TO AID HOLDING OF SHAPE



DEVELOPING A BOMBER STYLE JACKET WITH EXAGGERATED SLEEVES AND A THICK JERSEY RIB. THE JACKET WILL BE MADE FROM A STRETCHY THICK FABRIC WITH PRE ADDED STITCH DETAIL. THE FABRIC IS BONDED TO GIVE IT A BOXY STRUCTURE WHICH WILL HOLD THE LARGE SLEEVE SHAPE.

# DIVERSITY APOCALYPSE

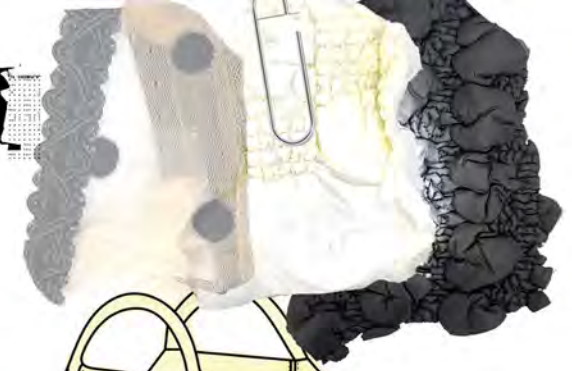
ELLIE WRIGHT  
 SPRING/SUMMER '24  
 DEVELOPMENT



FABRIC SWATCH



BUTTON FASTENED FLAP OPENING



DRAPING ON THE STAND ALLOWED ME TO DEVELOP THE SHAPE OF THE BAG AND THEN FURTHER DEVELOP DETAILS THROUGH SKETCHING ON TOP OF PHOTOS

ANOTHER FASTENING OPTION COULD BE EYELETING AROUND THE OPENING AND USING BOUND CORD AS A DRAW STRING METHOD



DEVELOPING A TOTE/SHAWL BAG ACCESSORY FOR THE COLLECTION BY DRAPING FABRIC ON THE STAND. THE BAG WILL BE MADE FROM A QUILTED PADDED FABRIC WITH A BOUND ADJUSTABLE STRAP.



THE FABRIC CAN BE MANIPULATED INTO A BAG FORM THE "SHAWL" STYLE I DEVELOPED ON THE STAND WAS MOST SUCCESSFUL ALLOWING THE FABRIC TO BE BOTH THE BAG AND STRAP IN ONE CONTINUOUS PIECE

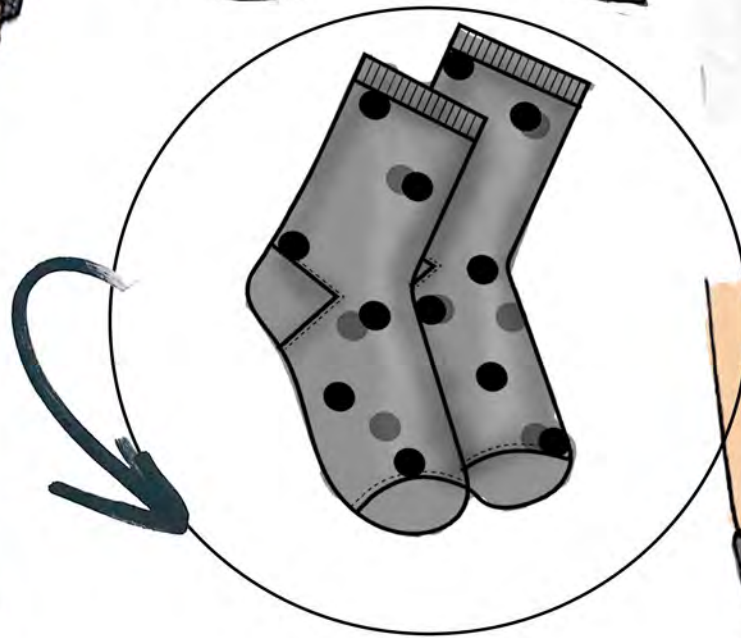
# DIVERSITY APOCALYPSE

ELLIE WRIGHT SPRING/SUMMER '24

FINAL BOARD - LOOK 1



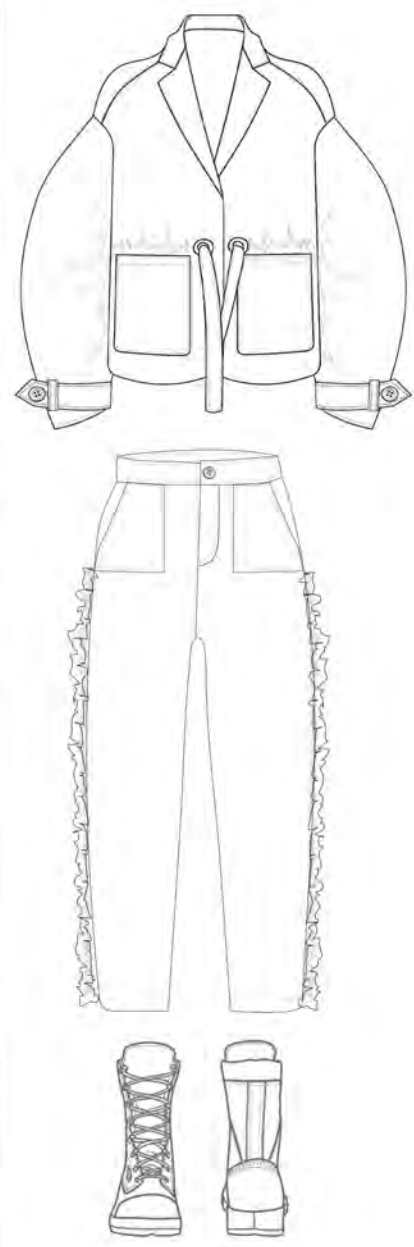
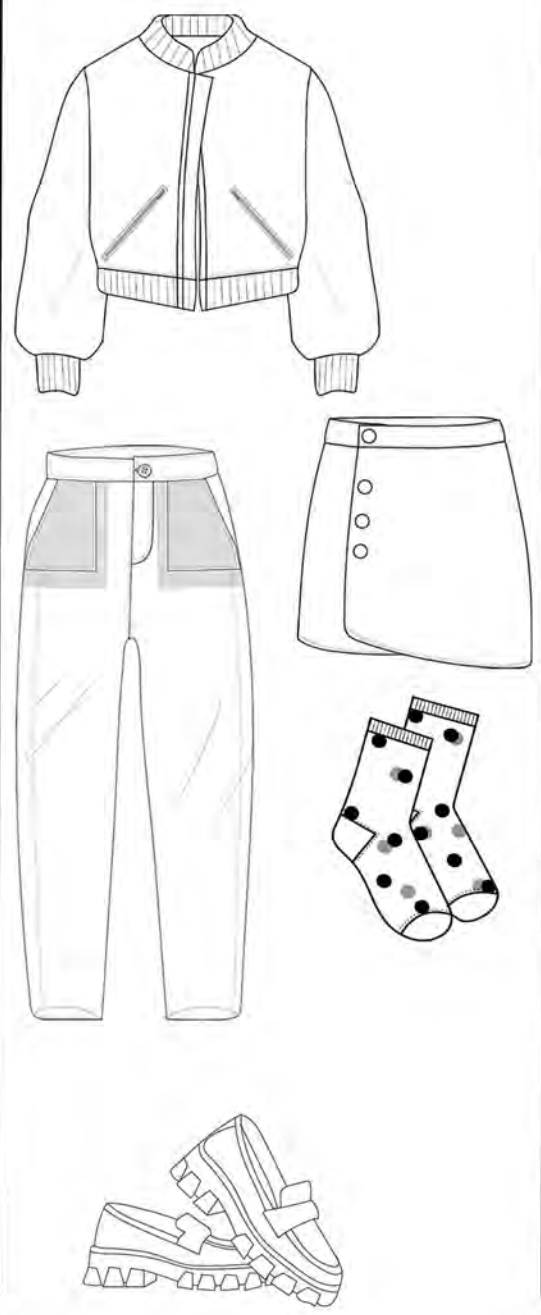
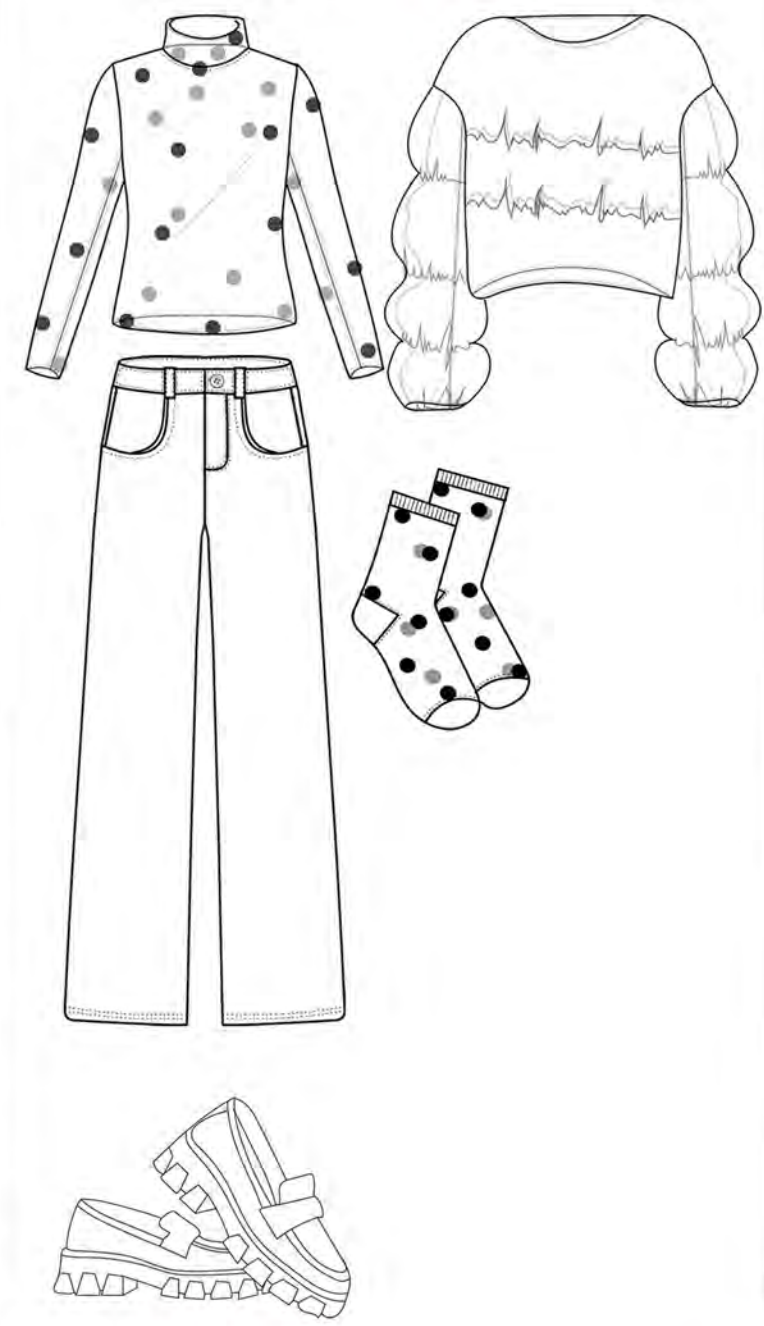
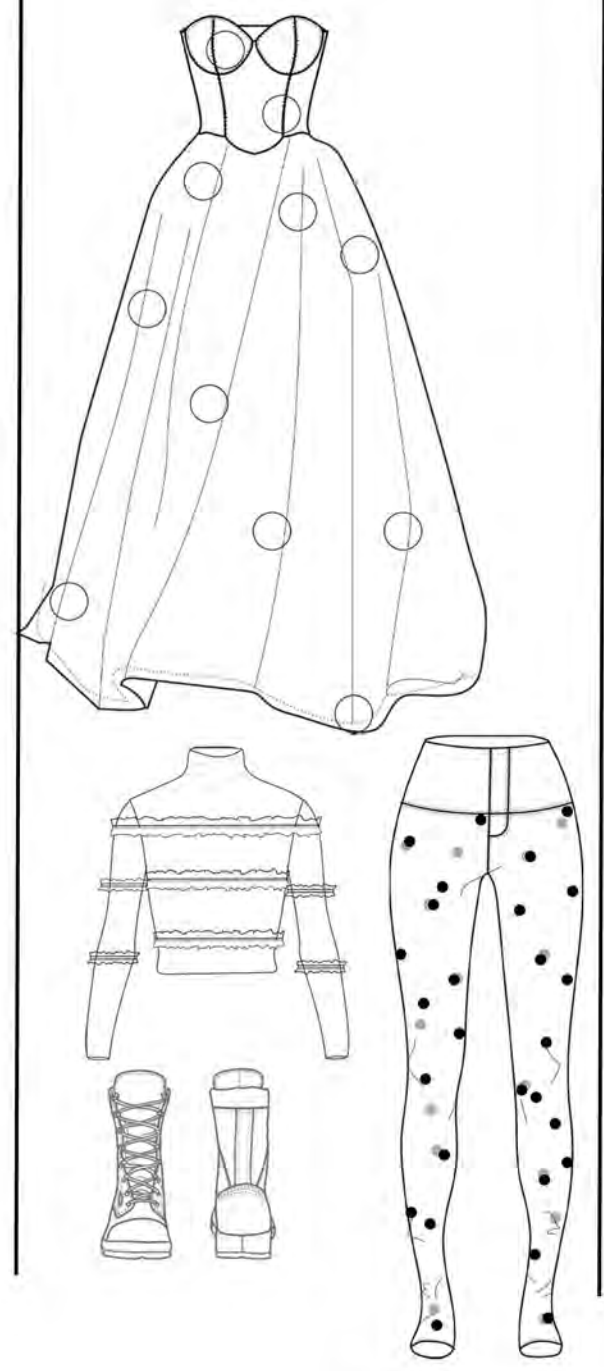
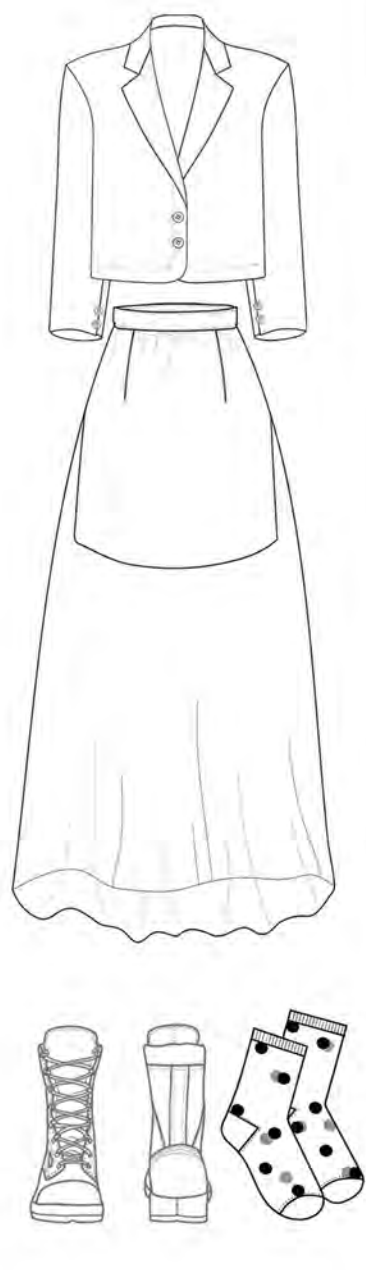
FABRIC SWATCHES: BLACK PLEATHER, POLYESTER WHITE LINING, GREY PATTERNED JERSEY AND TEXTILE EMBELLISHED CREAM SHEER



COMPLETE PLEATHER BLAZER, TOP STITCH DETAIL WITH SATIN LINING DARTS AT BUST AND CURVED HEM FOR A FLATTERING FEMININE BUT STRONG SILHOETTE



LOOK ONE: FITTED CROPPED PLEATHER BLAZER WITH SHOULDER PADS, LONG SHEER MAXI SKIRT WITH LINING SKIRT UNDERNEATH PAIRED WITH A GREY JERSEY TANK TOP, SHEER POLKA DOT POP SOCKS AND ARMY BOOTS.



**DIVERSITY APOCALYPSE**

RANGE PLAN SPRING SUMMER '24  
ELLIE WRIGHT



ELLIE WRIGHT  
SPRING/SUMMER '24  
FINAL LINEUP

LONG & MAXI SKIRT



Elasticated waist  
LEATHER



GREEN POLKA DOT

Layered sheer tops  
↳ OTHERS



PARIAL SHEER



COOL UNDERNEATH  
FULLNESS



LAYERED BLACK SHEER

# DIVERSITY APOCALYPSE

INDIVIDUAL LOOKS SPRING/SUMMER '24 ELLIE WRIGHT

POLEA DOT  
BASIC UNDERNEATH





**DIVERSITY APOCALYPSE**  
ON SET PHOTOSHOOT SPRING/SUMMER '24 ELLIE WRIGHT