

MECCANO

The Toy that grows with the Boy

.....
my new oven.
I baked
this cake in
my new Suzy
Homemaker oven



How toys in the early years can have an influence on children's future career choices

Did you know that toy choices in childhood have been said to impact career choice in later life, and that aggressive toys like guns can actually have a detrimental effect on young children? How much thought have you given to the psychological power of toys?

STAY HOME!



.....
ck Ame

.....
my sister
Amy

.....
Who i

.....
my little girl all
mother. The
maker appi



Day dreamer to kitchen cleaner 5/5 25 explores children's toys relations to stereotypical gender roles and the impact on ones future career path. This concept has been inspired as growing up a middle child to an older sister and a younger brother, I always wondered why toys were advertised differently depending on the gender it was targeted towards, throughout life I began to realise it was society's attempt of keeping women confined within the house

As young girls are provided with an abundance of baby dolls, lifelike in their mannerisms, they cry and come packaged with prams and kitchen sets. My concept is built on the narrative surrounding young girls being trapped within the doll's house, as everything surrounding them becomes real. The babies then begin to cry, and the kitchen transcends into something entirely different. No longer a place of play but a place of chores, the toys provide the girls with solely the skill set to stay within the confines of the doll house. That is until a Meccano structure falls onto the house, allowing her a way to climb out. As she climbs along the Meccano, this is what provided her with enough skills to eventually leave the house.

EVA GWYNETH PARRY
Day Dreamer To Kitchen Cleaner
5/5 25



My colours have been chosen as they have no association with gender. I believe the brown and cream colour bring maturity to a collection so closely surrounding childhood.

EVA GWYNETH PARRY
Day Dreamer To Kitchen Cleaner
5/5 25

TRIBE
TREND

TRIBE

- Hyper feminine meets functional utilitarian.
- Drawn to garments with unique structural features.
- A tribe of Mature women seeking to experience slight nostalgia within their garments.
- City-living

TREND

COMBINING NEW FEMININITY
AND FUTURE UTILITY,
UTILITY STYLES GET A
SOFTENED FEMININE TOUCH.

ELEVATED UTILITY



EVA GWYNETH PARRY
Day Dreamer To Kitchen Cleaner
 S/S 25



STRENGTH

ATTACHING TAGS TO PICKETS

USE FINGERS FOR VOLUME

NEEDLES ON FLAPKETS BUILT INTO SEAMS

TAGS ON INSIDE SHIRT



SIDE BUTTON FASTENING



SHAVE FROM IRONS



CHECKING THE ATTACHMENT BETWEEN TAGS & THEIR PACKAGING



MUY SAMPLE

HEAVING TAGS THROUGH MESH

FOUGHT TAGS BEGAN A BREAKING POINT ON CHINA



NEEDLES

FRENCH SEAM FOR ADD'D STRUCTURE



SAMPLE OF YELLOW COTTON BOUND TO ANOTHER LAYER FOR STRUCTURE



EVACUATED BELLY LIPS

TEXTURED SUTTING OF SHIRT

ATTACHING THE NEED TAGS TO POINTS OF CARCASS



USE NEEDLES TO ENHANCE & STABILISE THE TAGS - BUSTS

ATTACHING TO THE CHIN

WEAVING SHIRT UNDERNEATH

LEAVED EDGE

SHIRT

WEAVED BY WHOLE SEAM

TAPE TO HOLD TAGS

SHIRT

SHIRT

SHIRT

STABILISED BY ATTACHING WITH NEEDLES

CONSTRUCTION



FRENCH SEAM FOR STRUCTURE

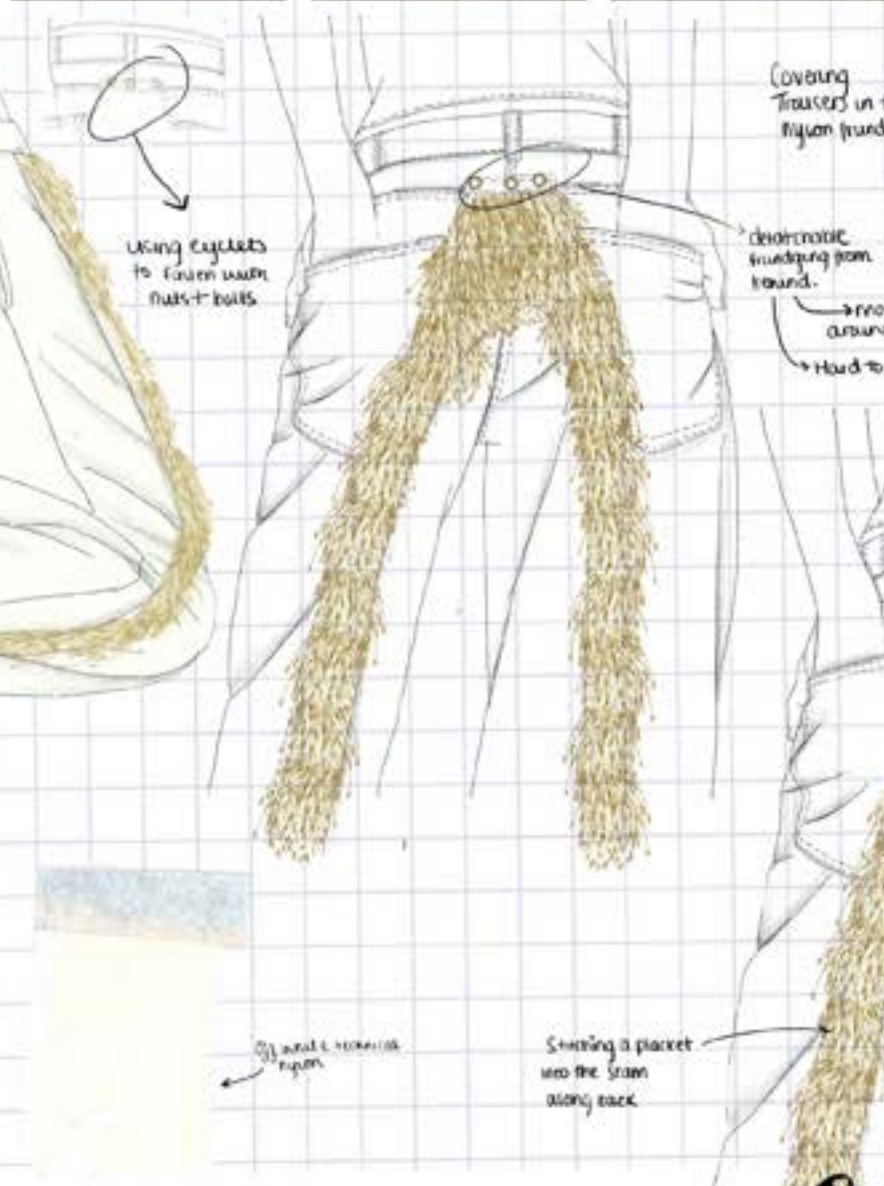
SHIRT

TEXTURED SUTTING OF SHIRT

SYMMETRICAL



EVA GWYNETH PARRY
Day Dreamer To Kitchen Cleaner
 5 / 5 25



using a nylon
Hanging bag to
create a hanging
within Toy packaging a Type
of bag is given used to secure
the toy to the box



Covering
Trousers in the
Nylon fringing

interfacing
a pocket
+ overlocking
the side

using a nylon
Hanging bag to
create a hanging
within Toy packaging a Type
of bag is given used to secure
the toy to the box



using eyelets
to fasten with
nuts + bolts

along sides insert of into pocket

detachable?
detachable

using eyelets
to fasten with
nuts + bolts

detachable
fringing from
around.
→ removable
around garment?
→ Hard to cut on

Strike down one half of
pocket with hole
forming

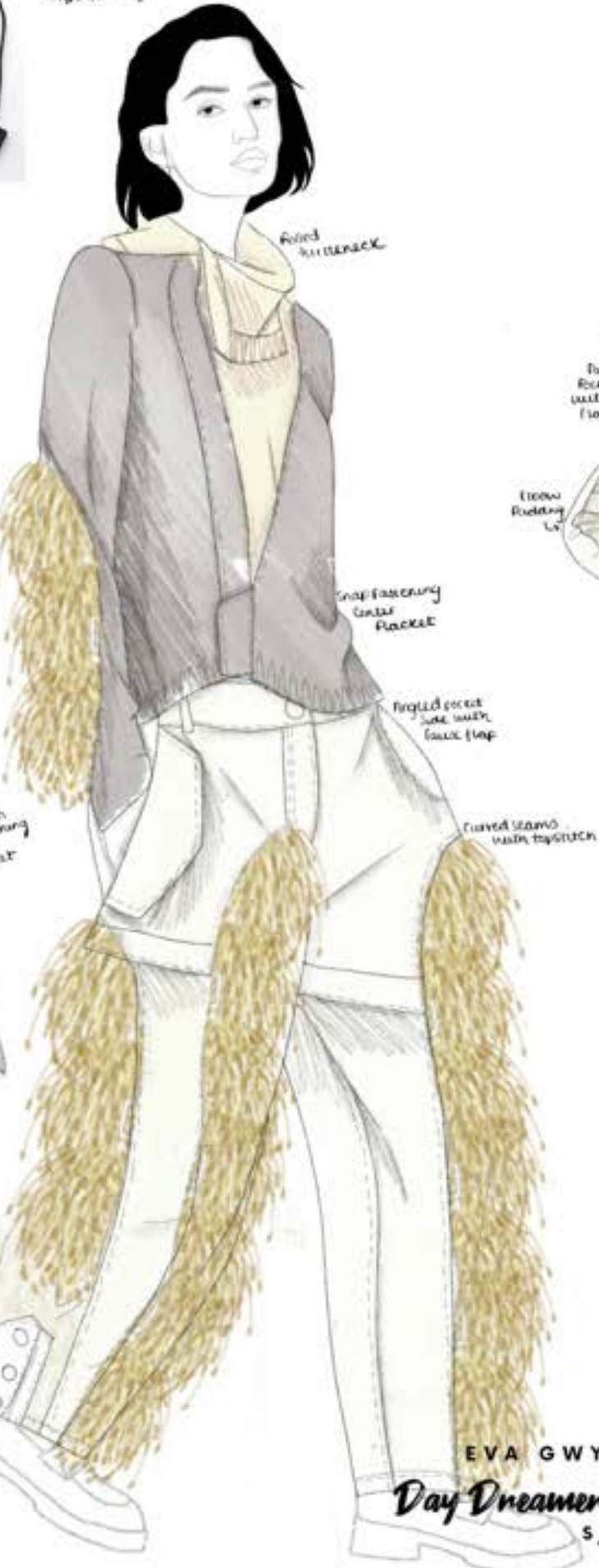
loop through Taps within
the Tulle

detachable



detachable
fringe

DESIGN DEVELOPMENT



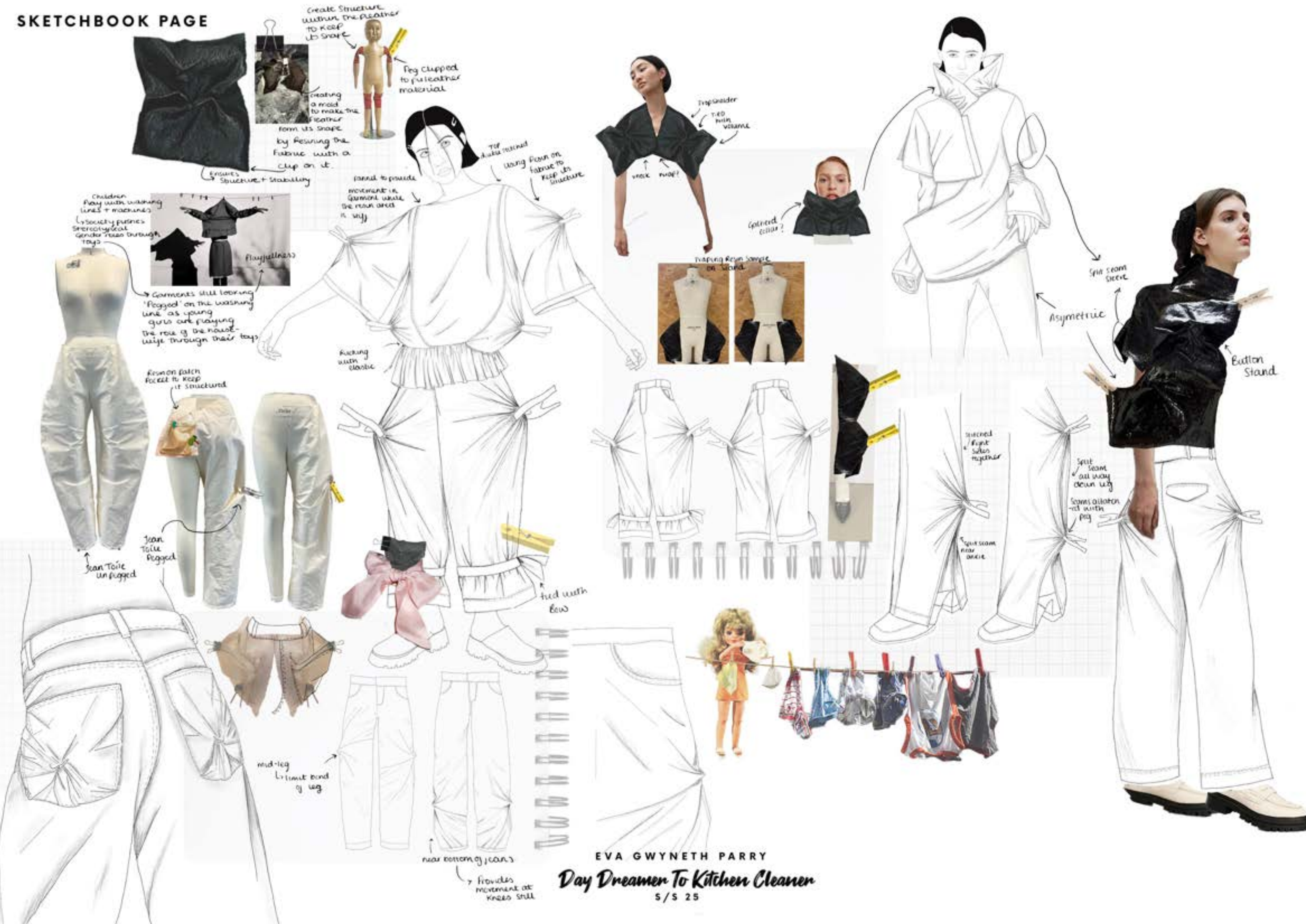
EVA GWYNETH PARRY
Day Dreamer To Kitchen Cleaner
 S/S 25

SKETCHBOOK PAGE



EVA GWYNETH PARRY
 Day Dreamer To Kitchen Cleaner
 S/S 25

SKETCHBOOK PAGE



Create Structure without the leather to keep its shape
 Peg clipped to the leather material

creating a mold to make the leather form its shape by securing the fabric with a clip on it.
 ensures structure + stability

top shoulder tied with volume
 v-neck

top shouldered using pins on fabric to keep its structure

collared collar?

draping resin sample on stand

split seam sleeve
 asymmetric
 button stand

Children play with washing lines + machines
 ↳ Society pushes stereotypical gender roles through toys
 ↳ Garments still looking 'flogged' on the washing line as young girls curl playing the role of the housewife through their toys
 ↳ fluffiness

Resonance patch Pocket to keep it structured

jean tote flogged
 jean tote unflogged

rucking with elastic

heel with bow

turned front sides together

split seam all way down leg
 seams align on all with pig

mid-leg ↳ limit bend of leg

near bottom of jeans
 ↳ provides movement at knees still

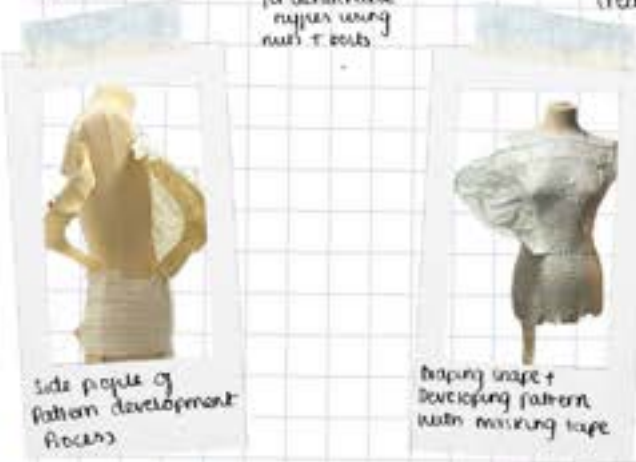
EVA GWYNETH PARRY
 Day Dreamer To Kitchen Cleaner
 S/S 25

SKETCHBOOK PAGE



Developing ideas on mannequin

Focus on ruffles + channels for detachable ruffles using nuts + bolts



Side profile of pattern development pieces

Tracing shape + developing pattern with marking tape

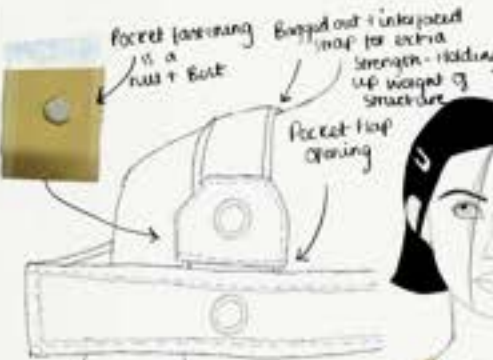
Creating pattern



Creating a pocket with zipper to keep each side tight to body



Line from ribbing into ruffle



Attaching pockets to straps of garment



Channel on skirt with three equidistant



Attach Ruffles using nuts + bolts through equidistant



Details attached on waistband

Bus ended Tuttle

Hand draped between 2 layers of fabric



Bus End

Underarm finished with facing



Shape formed into underarm channel

elastic waistband made stretchy hips



The elastic through apertures helps the shape stay tight to the skin



Creating a channel for the elastic within a ruffle

Before ruffling

Ruffled hem

adding contrast to side seam - use aqua elastic



Underarm detached pocket with zipper attached

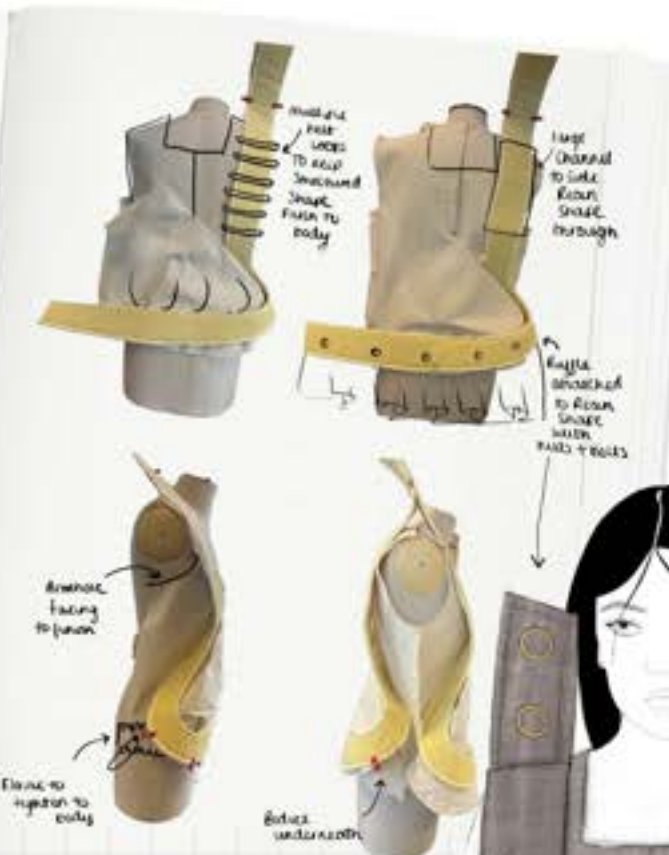
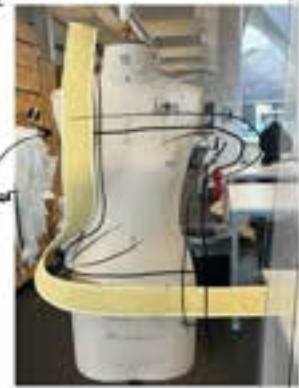
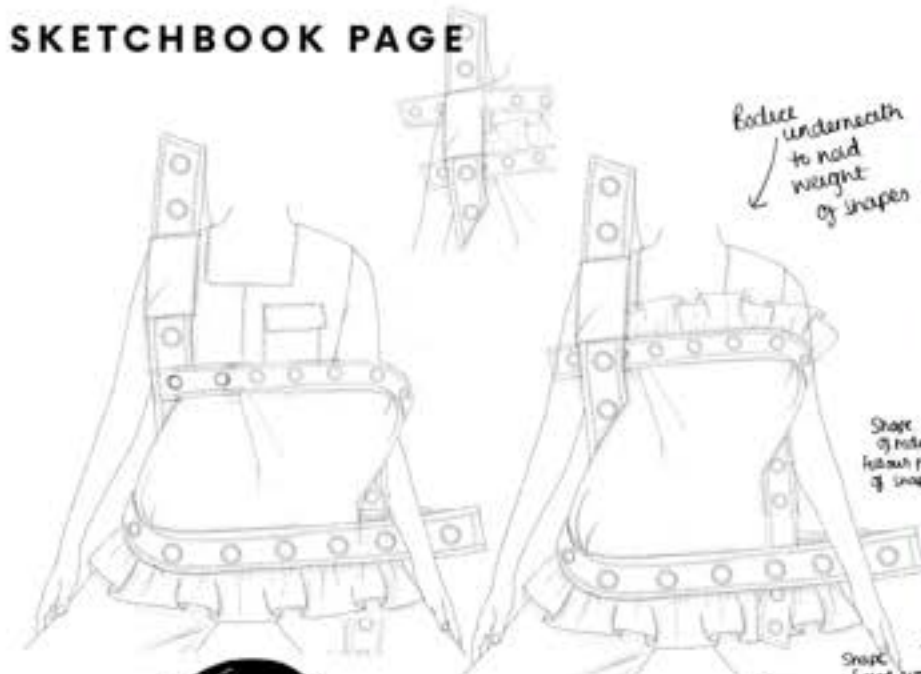
Ruffles circumference

Equidistant on pocket



EVA GWYNETH PARRY
Day Dreamer To Kitchen Cleaner
5/5 25

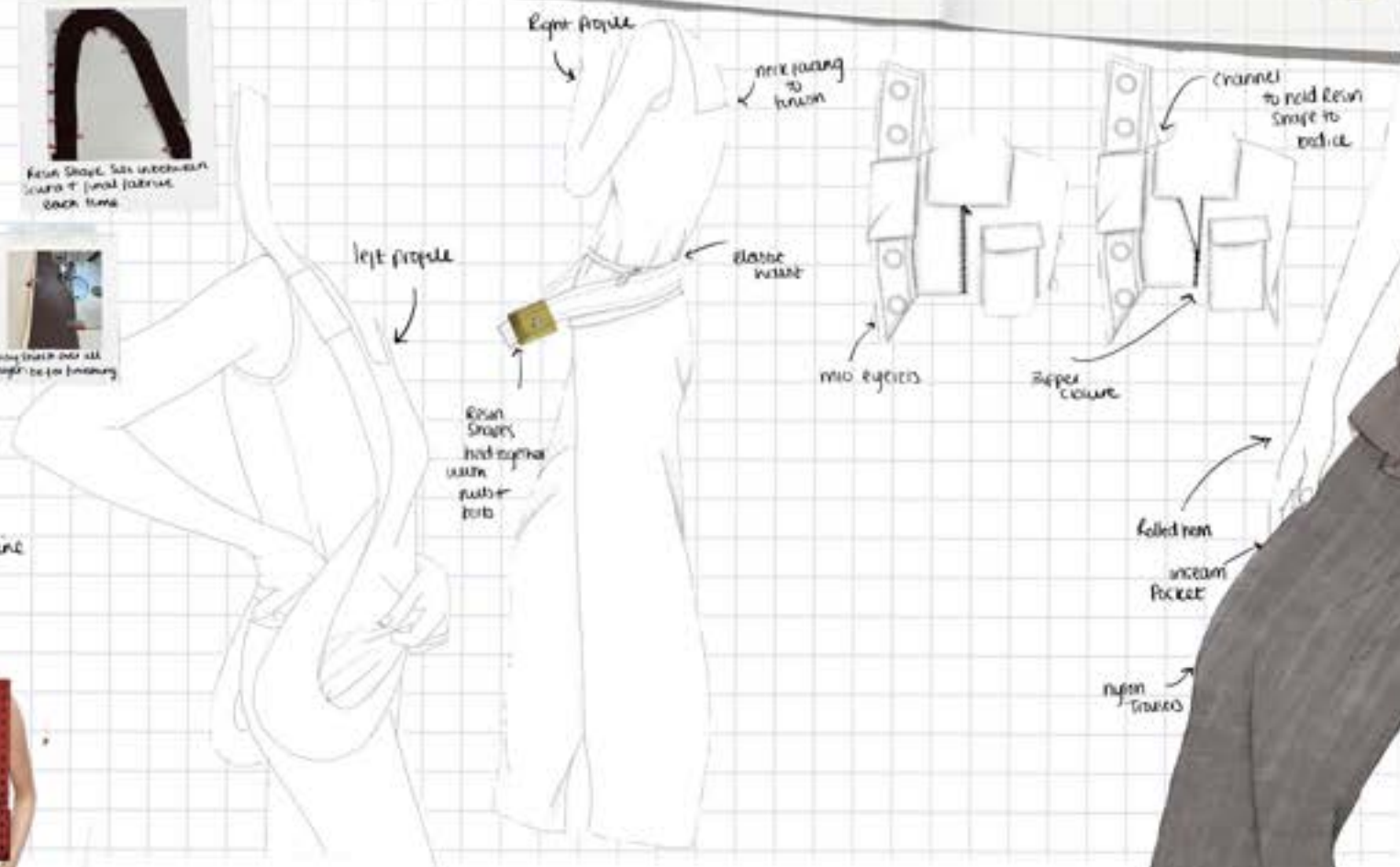
SKETCHBOOK PAGE



Structured Square neckline



nylon skirt



DESIGN DEVELOPMENT





EVA GWYNETH PARRY
Day Dreamer To Kitchen Cleaner
 5/5 25



EVA GWYNETH PARRY
Day Dreamer To Kitchen Cleaner
S/S 25



EVA GWYNETH PARRY
Day Dreamer To Kitchen Cleaner
5/5 25