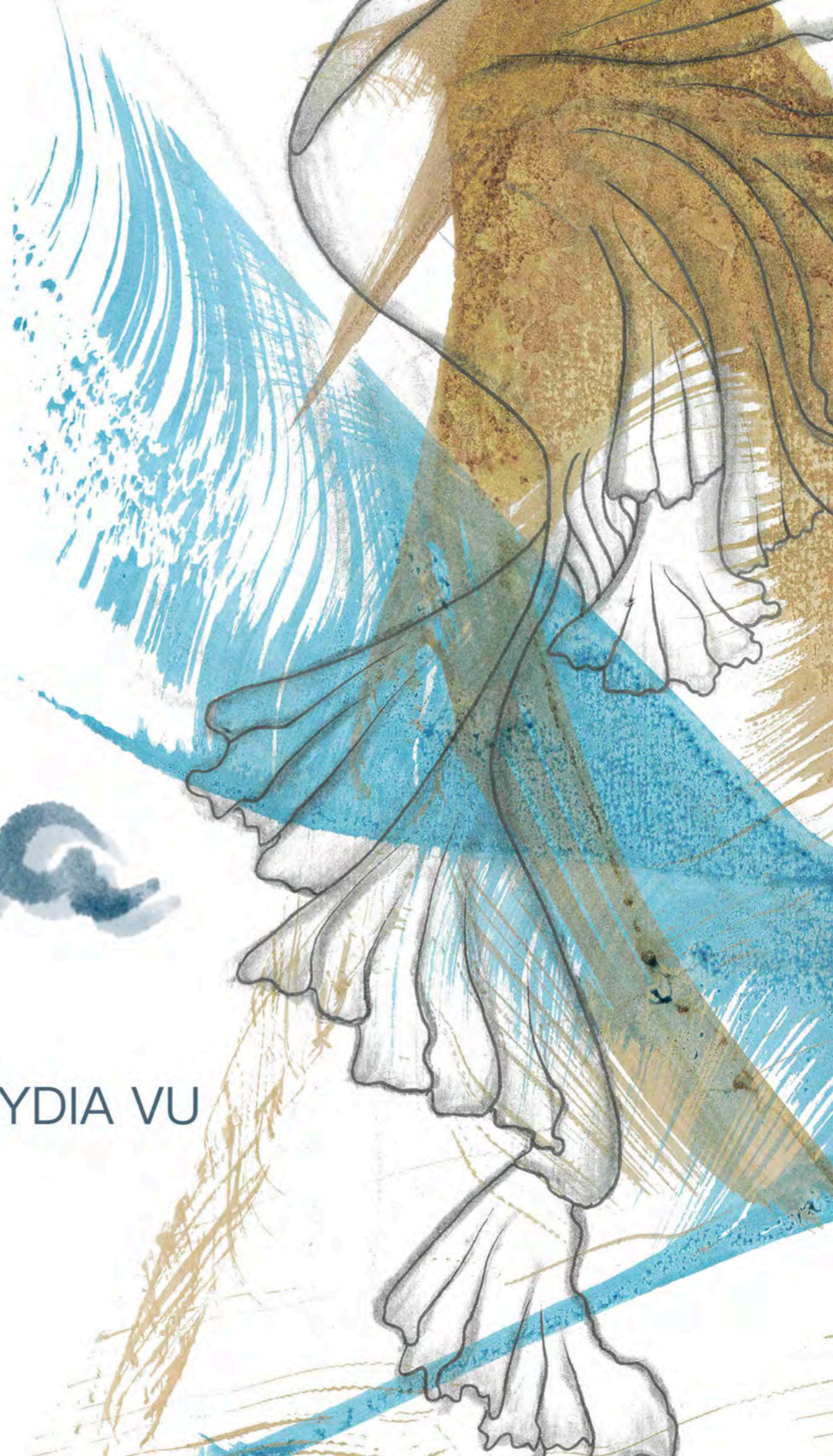
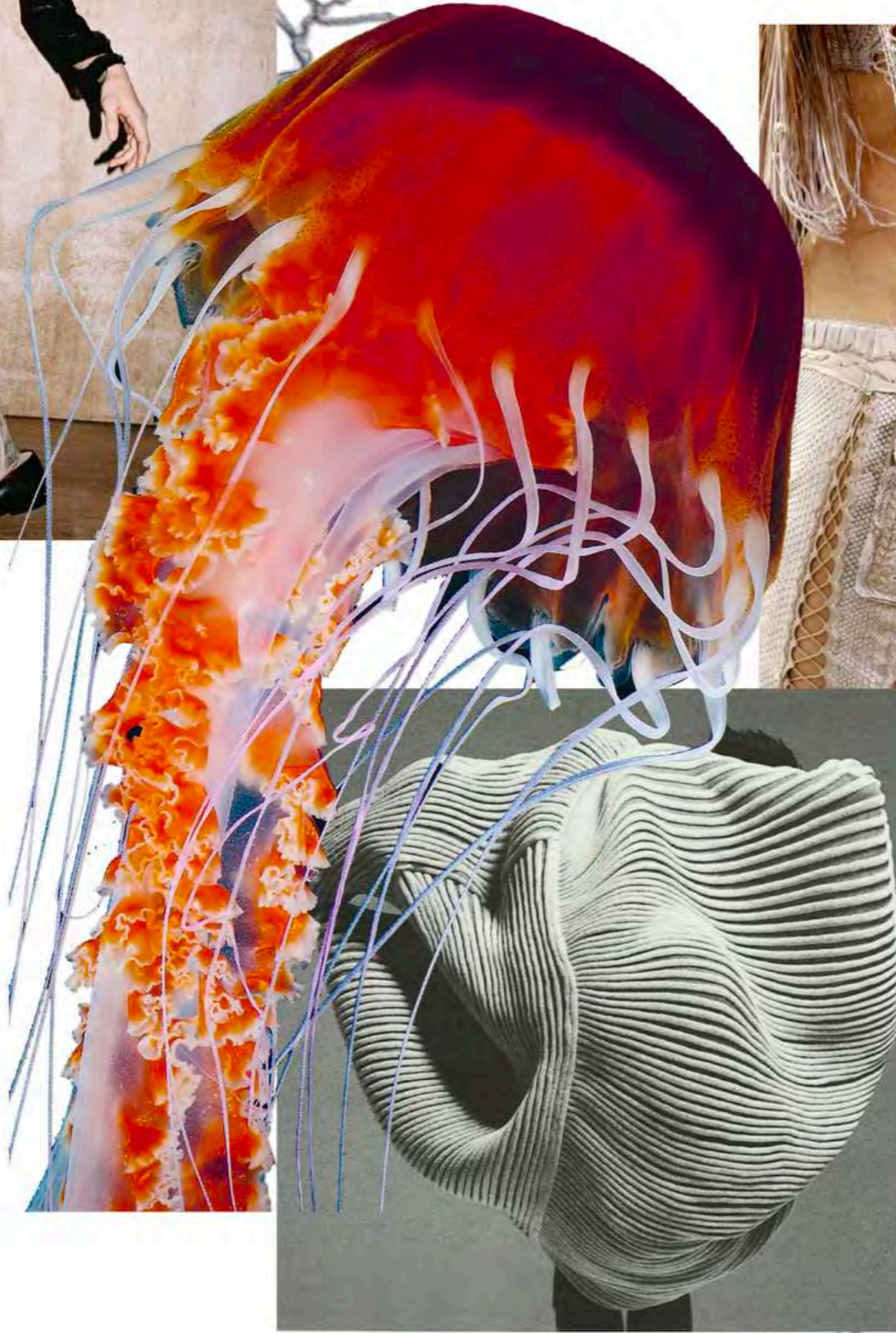
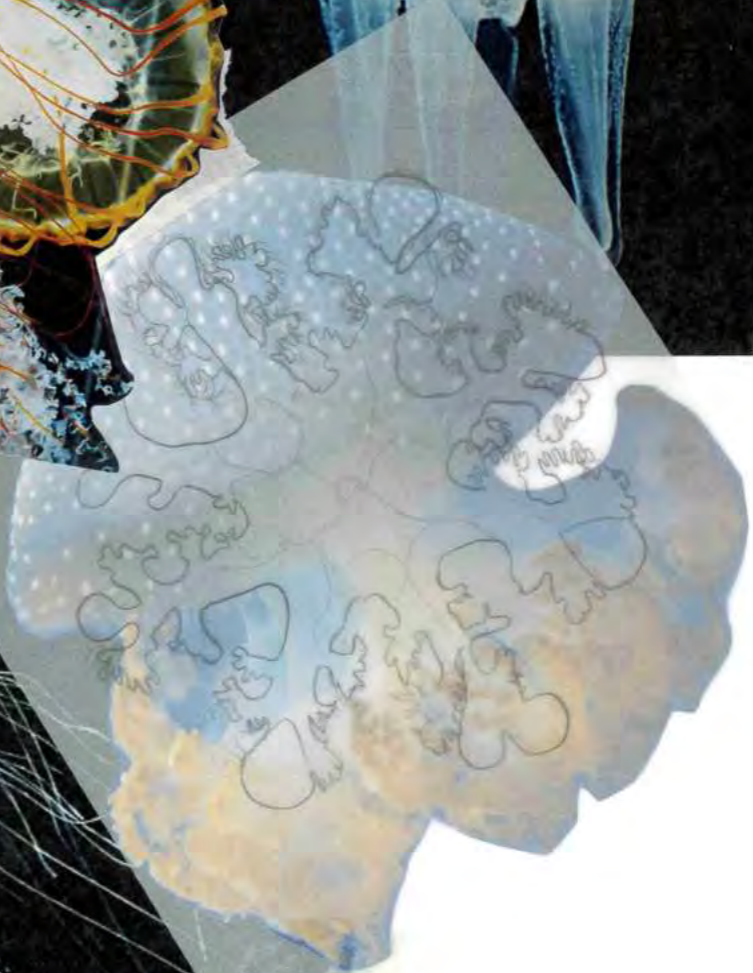
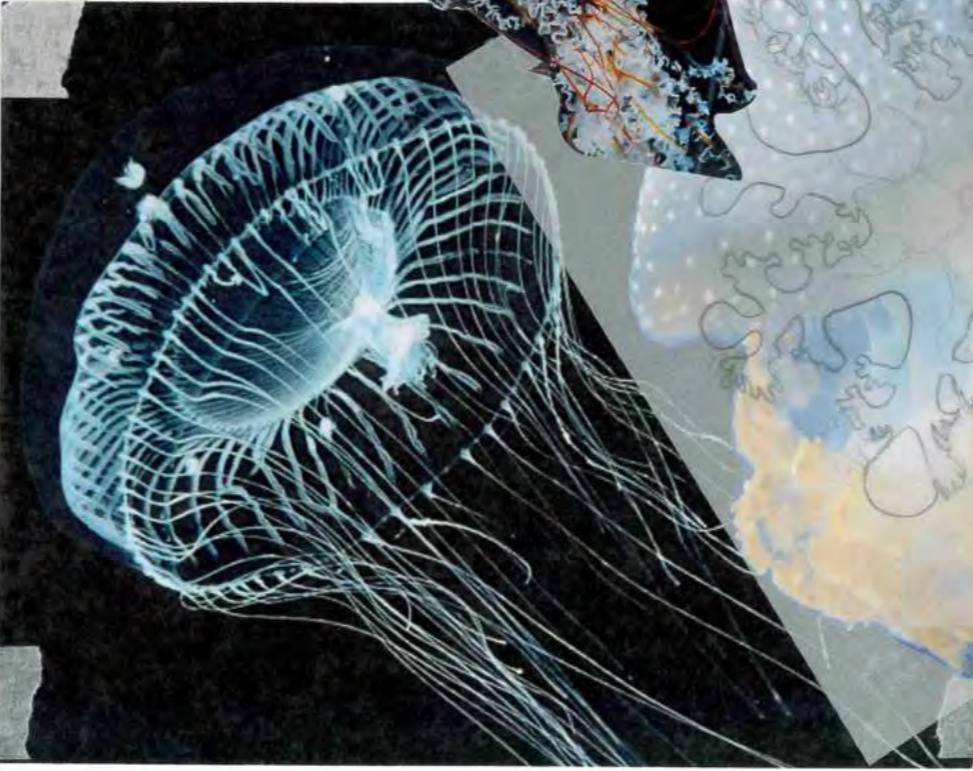
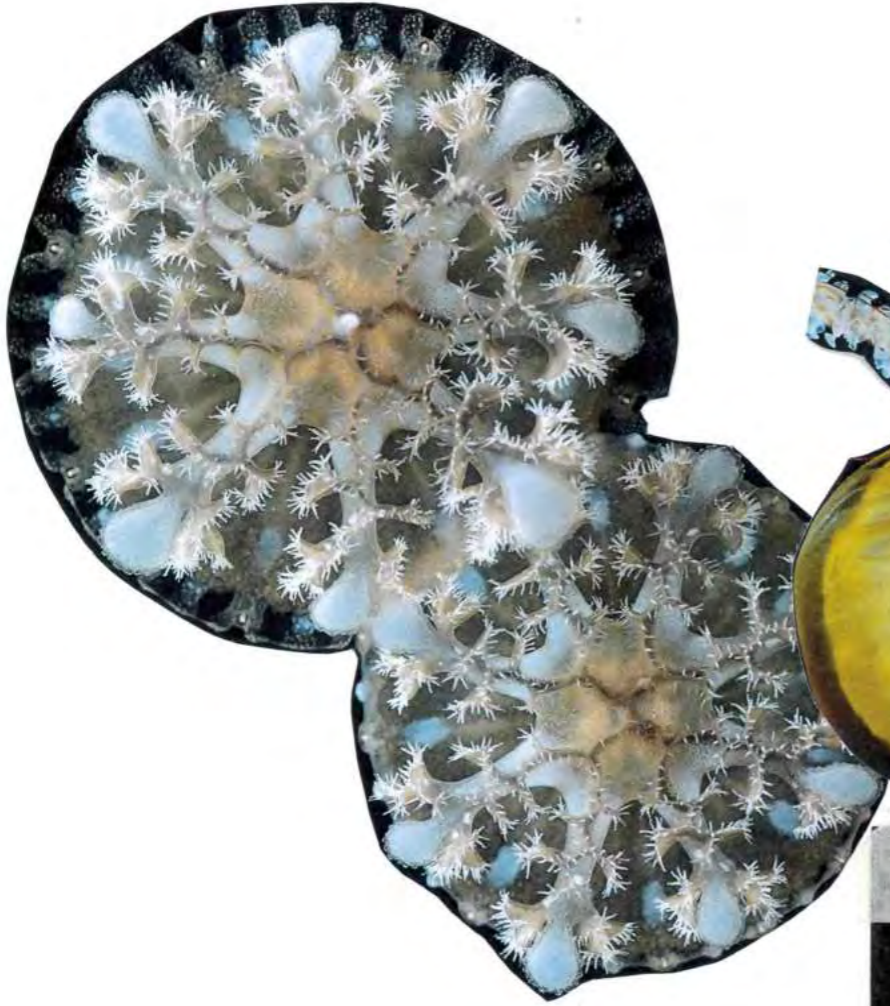


Medusa

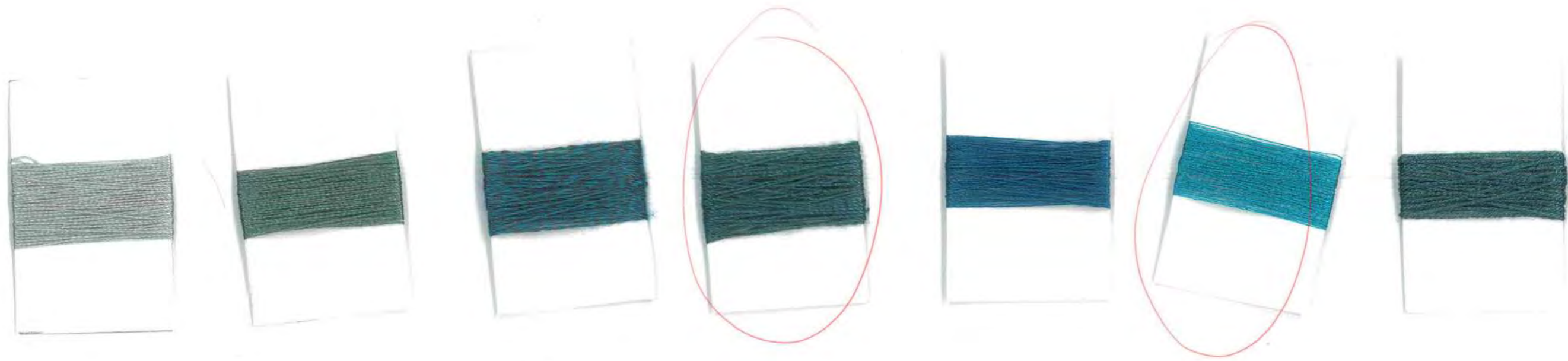
LYDIA VU



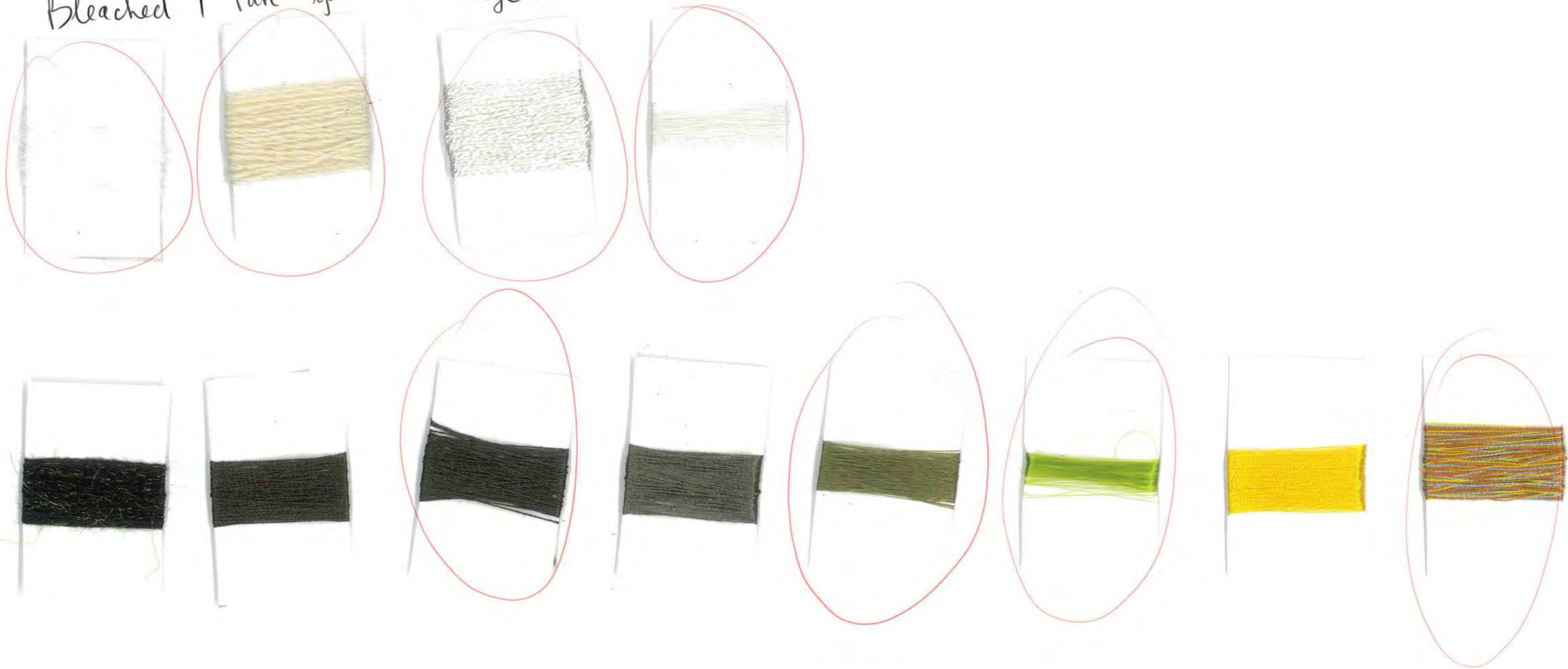


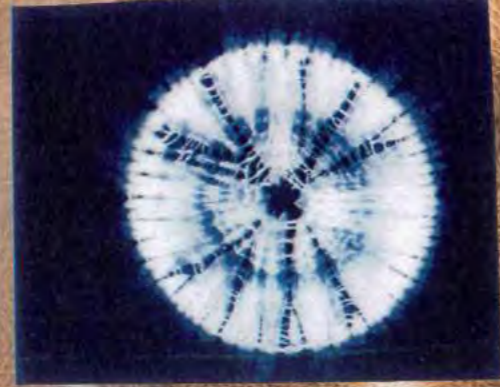
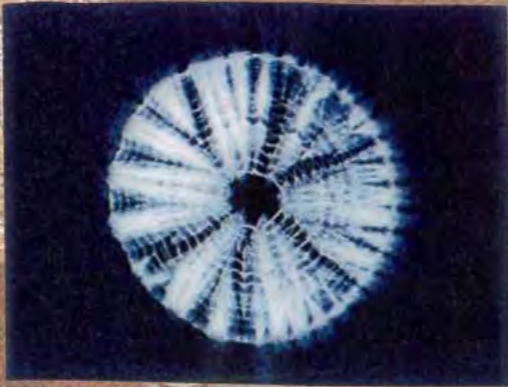
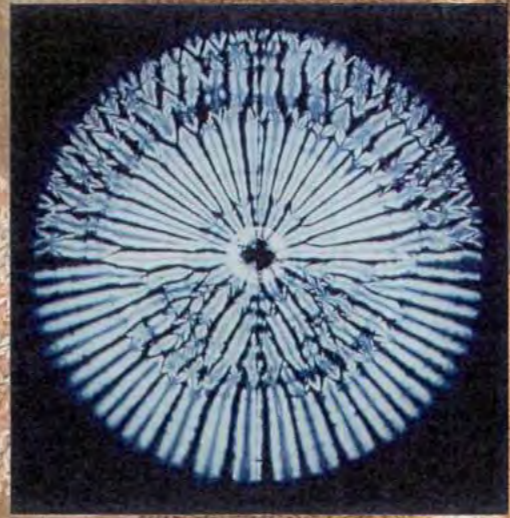
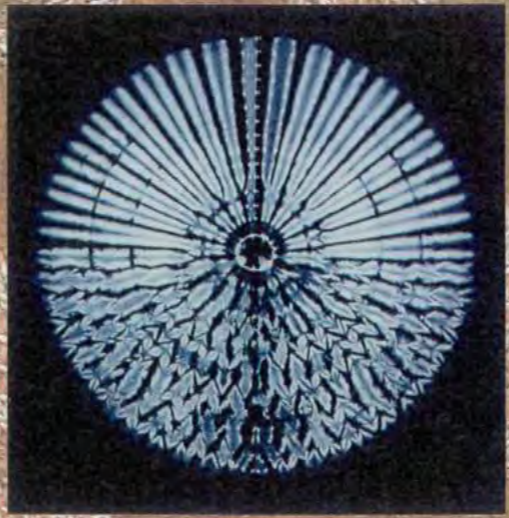






Bleached / Pure yarn to dye:







knitted in spiral way

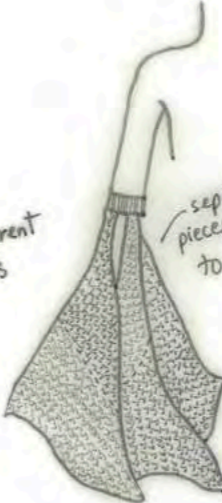


original shape is circle

this has elastic band inside for adjusting



3 different sizes



separate pieces attached to band



this knit is a bit heavy for the sleeve



rib

spiral knit

half of circle knit

rib to hold



a long spiral knit

connect with this ring glove



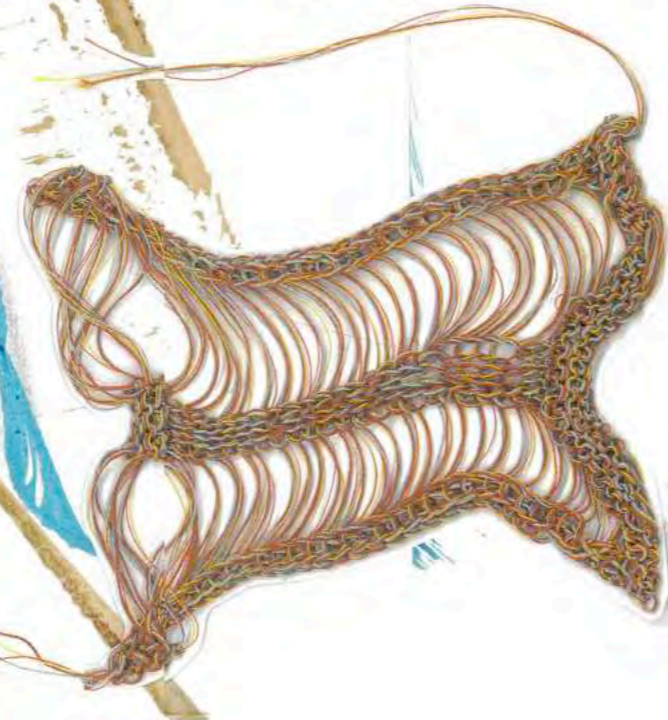
ladder

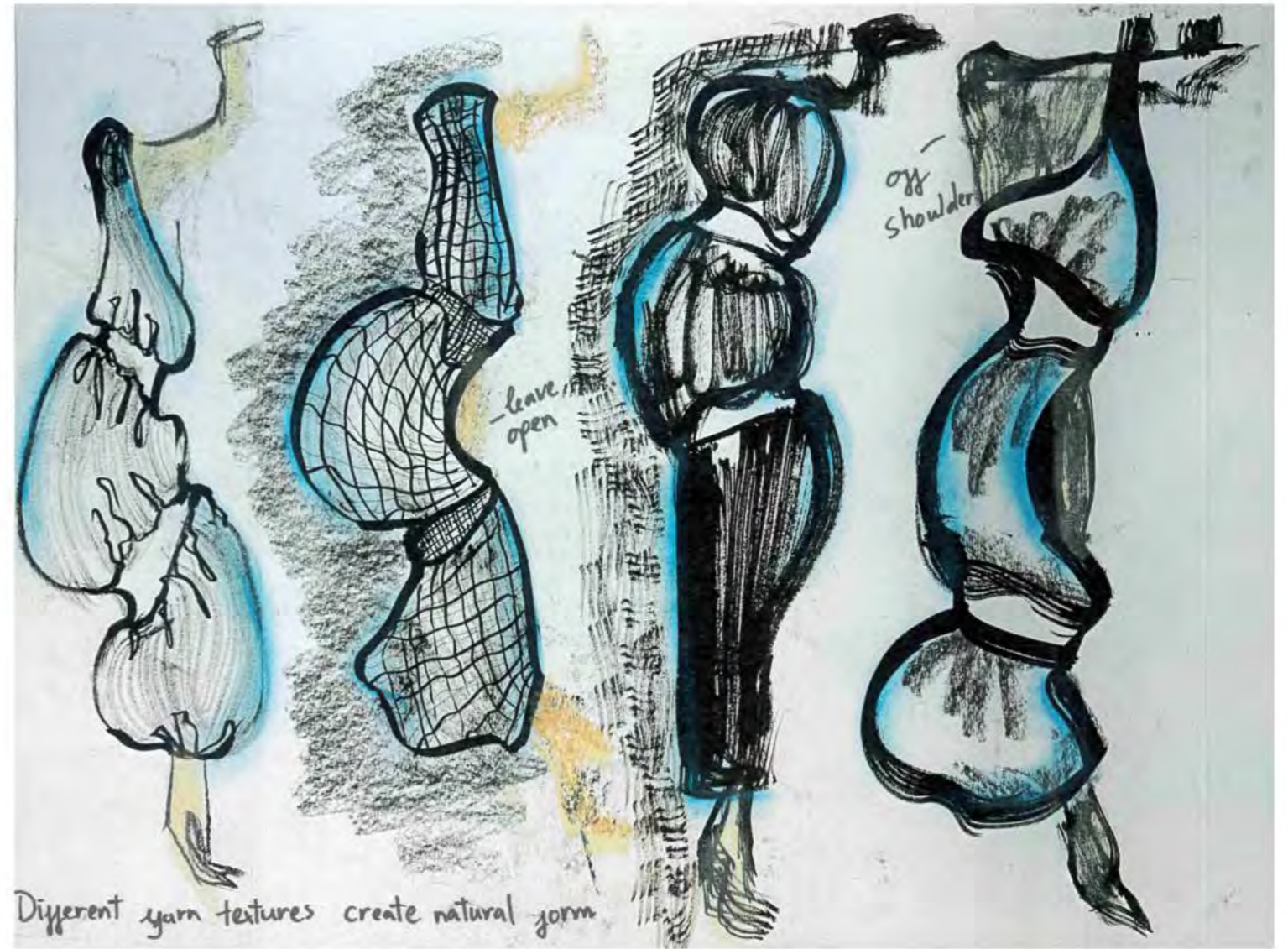
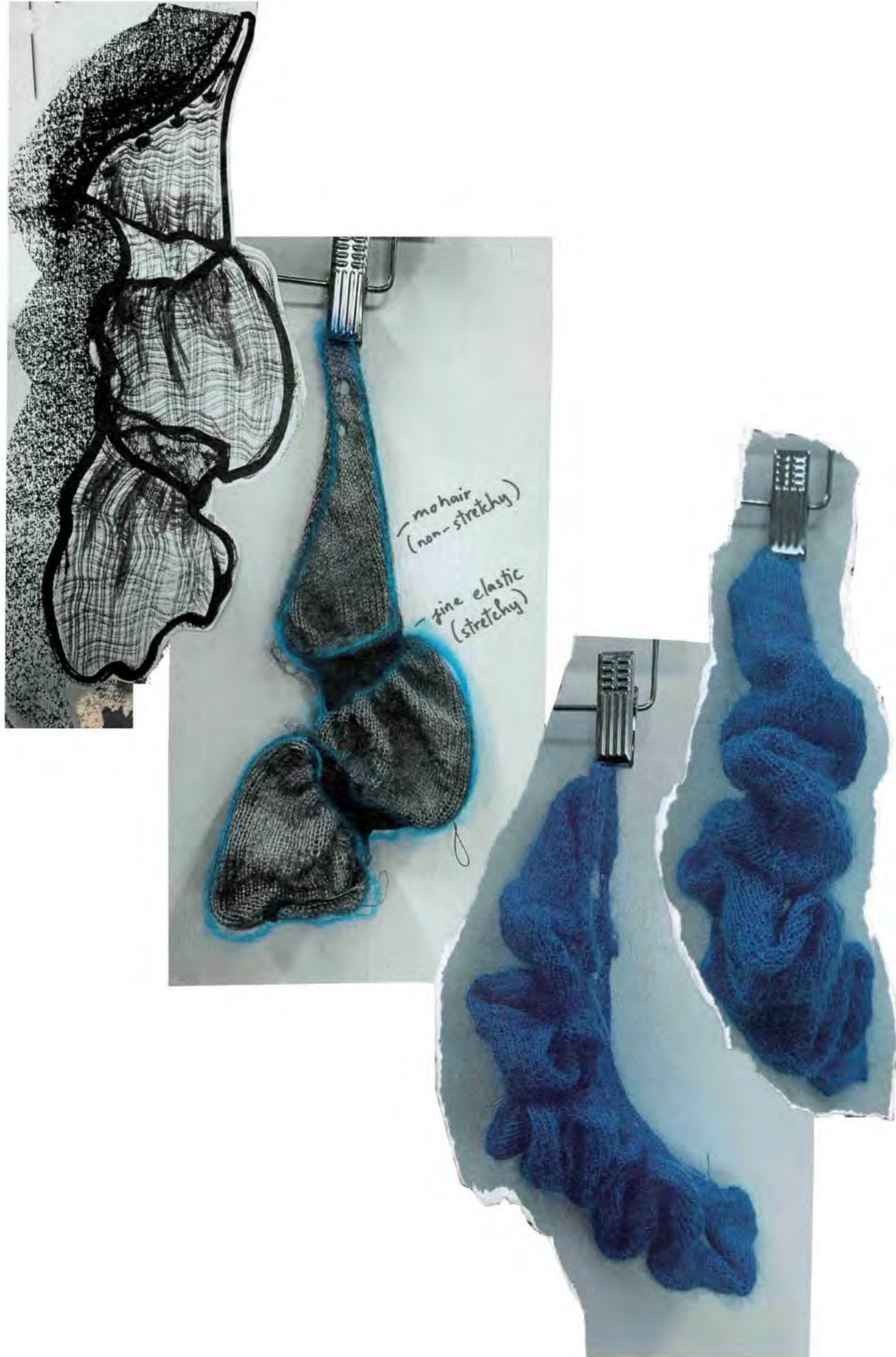
This is ring glove (attached to sleeves) with the purpose of keeping sleeves in the right position



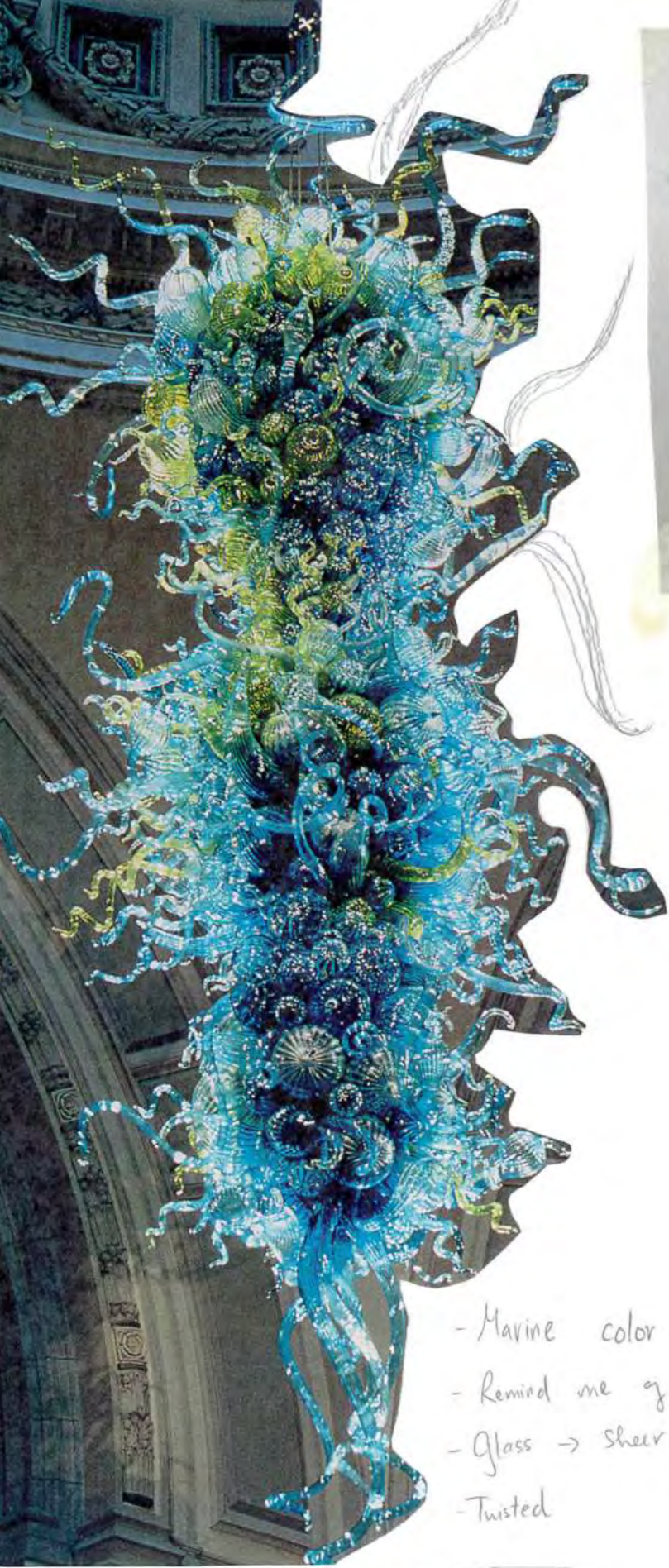
crochet

elastic band inside

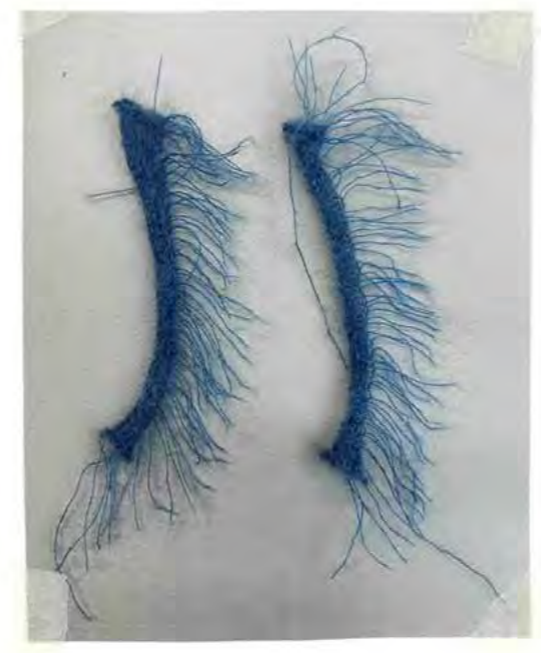




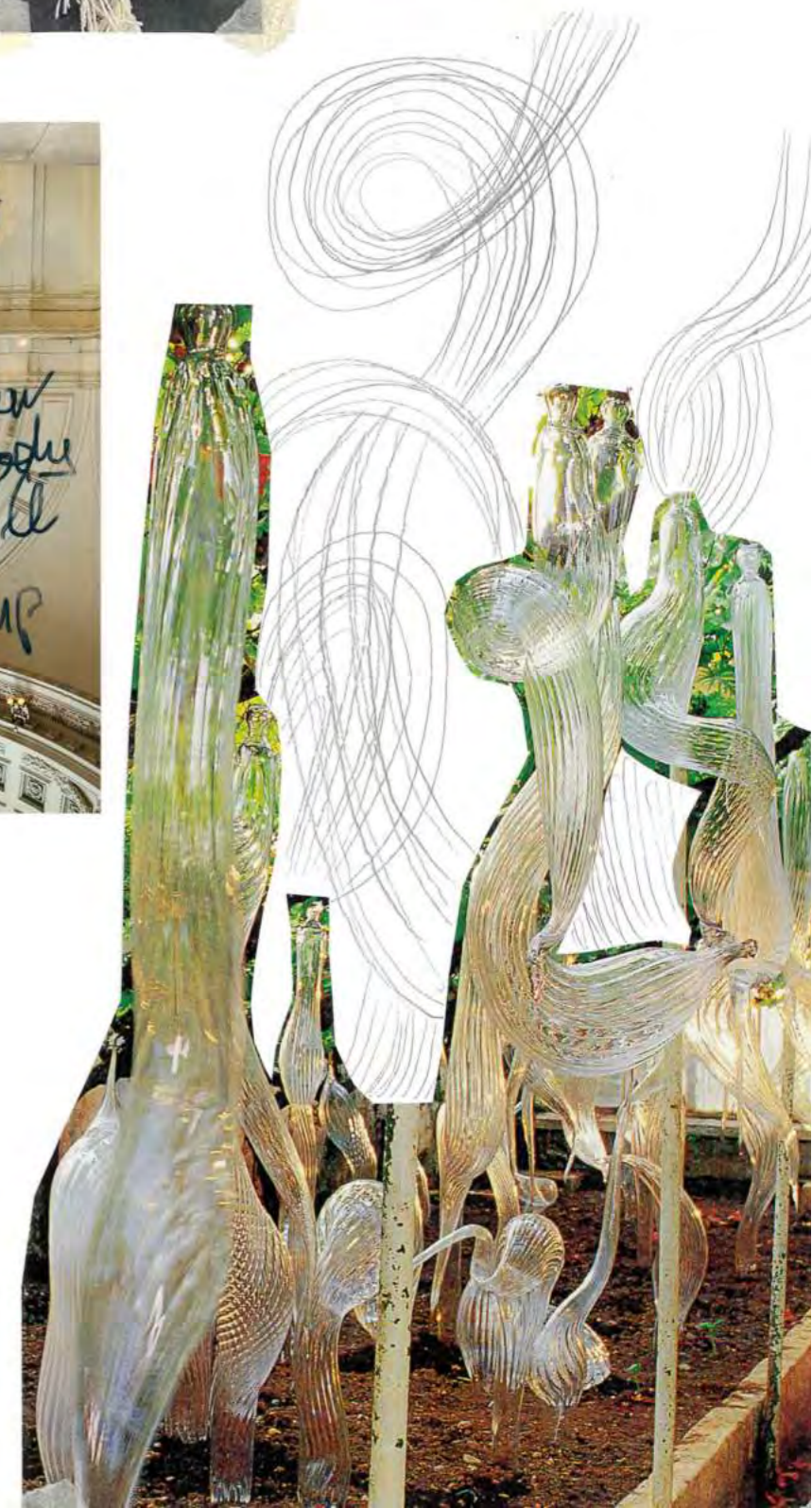




- Marine color
- Remind me of jellyfish shape
- Glass → sheer
- Twisted



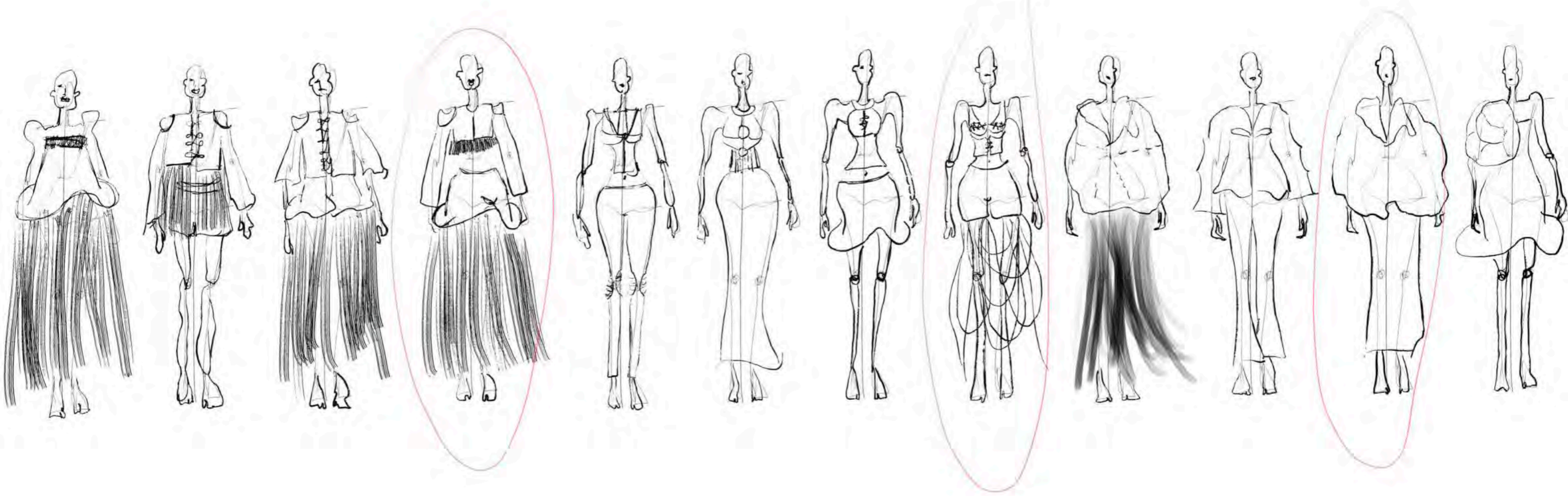
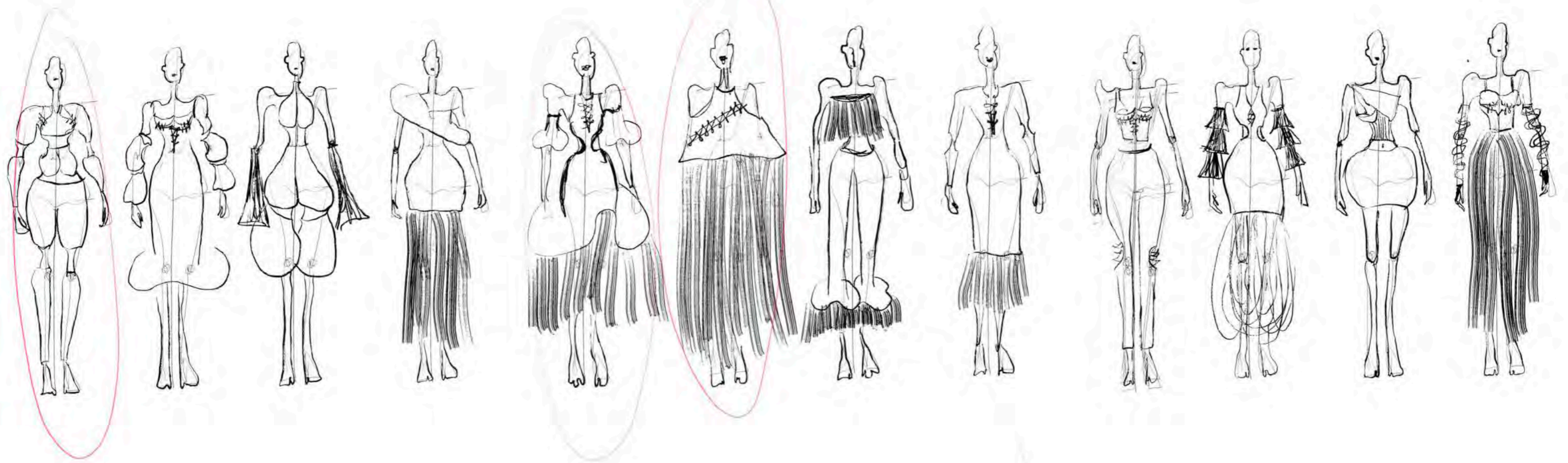
Braid till here and let it float

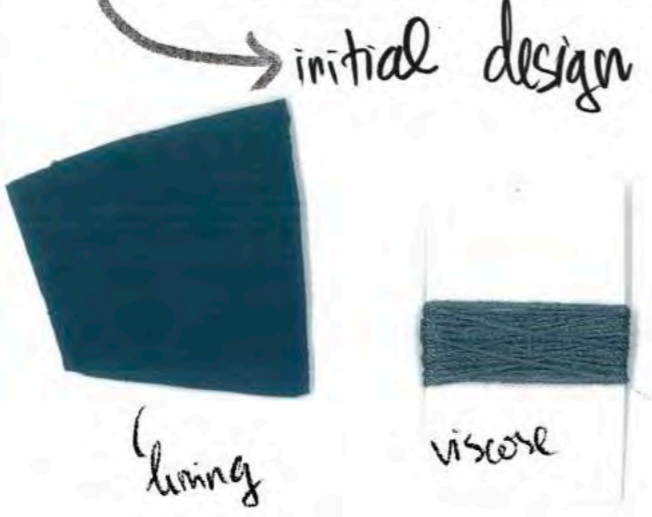




MOVEMENT

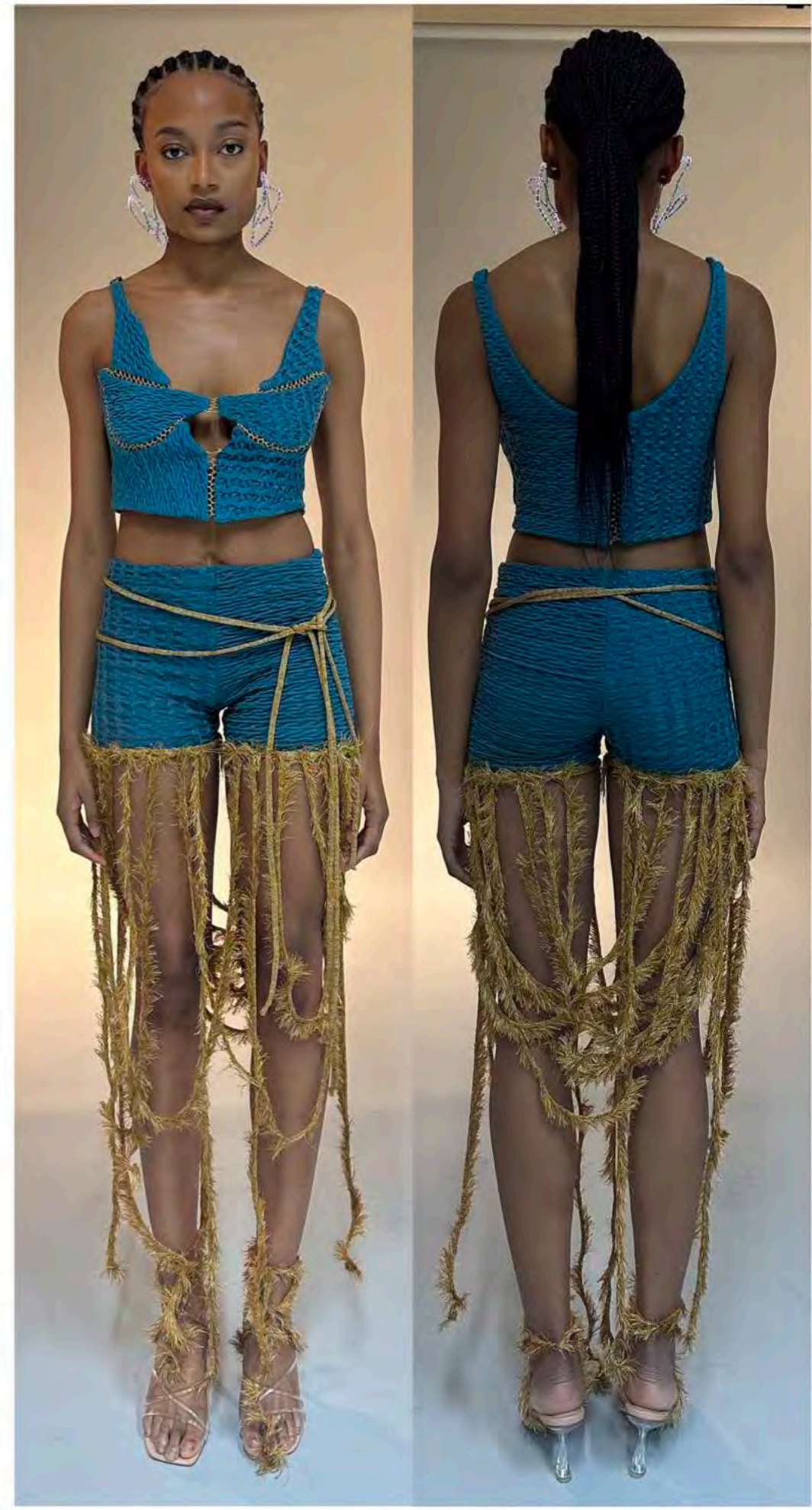


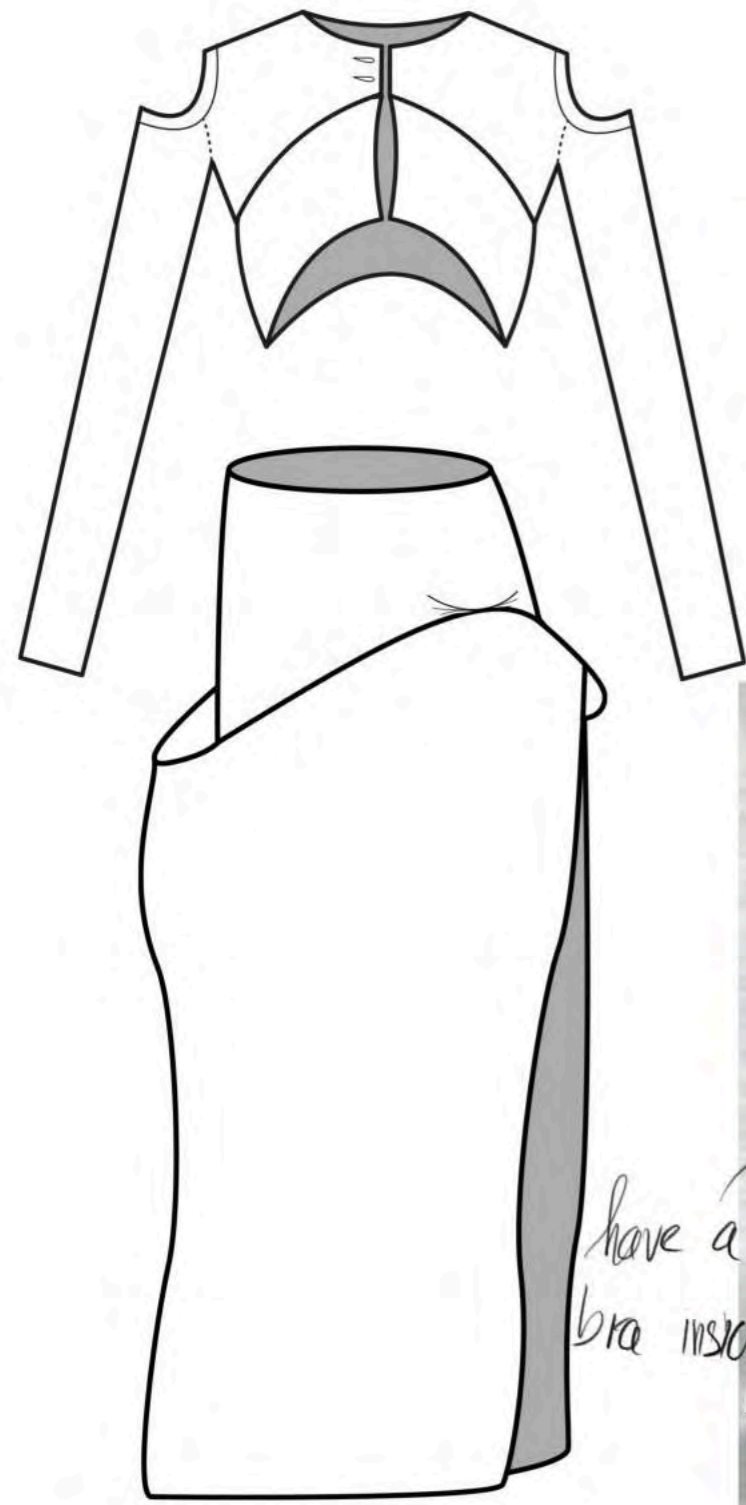




stretchy viscose
mix with chiffon

combination of
5 yarns x 2





this rib fabric
created
more structure



Initial
design



close shoulder
a bit
more





