



# TRAGEDY OF THE PRETTY GIRL

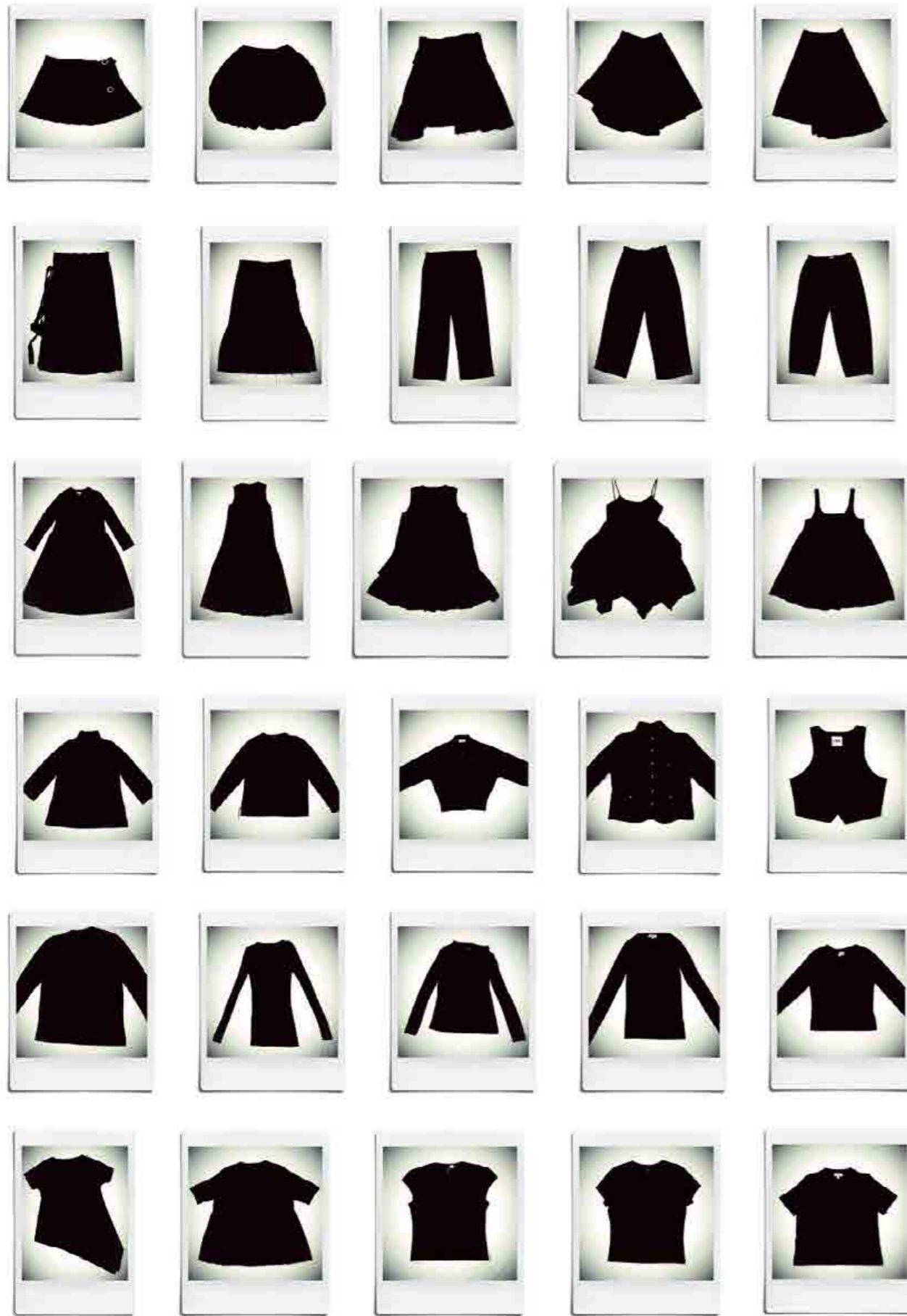
A WOMEN'S WEAR COLLECTION

BY NINA JANE TISBURY

UGLY  
DARK FEMININE  
BLACK  
LOW WAISTED  
REINVENTED A-LINE  
OVERSIZED  
OUT OF PROPORTION

MY COLLECTION IS BASED OFF  
THE PERIOD OF TIME I WAS  
HOMELESS. I THREW ONLY BLACK  
GARMENTS INTO MY SUITCASE  
AND A BUNCH OF BINBAGS,  
WITH THE THOUGHT PROCESS  
THAT EVERYTHING WOULD  
MATCH SO I COULD MAKE AS  
MANY OUTFITS AS POSSIBLE.





## LIST OF CLOTHES:

- 7 SKIRTS
- 3 PAIRS OF TROUSERS
- 5 DRESSES
- 2 JUMPERS
- 2 JACKETS
- 1 WAIST COAT
- 5 LONG SLEEVES
- 5 SHORT SLEEVES
- 12 PAIRS OF UNDERWEAR
- 2 BRAS
- 8 PAIRS OF SOCKS
- 3 PAIRS OF SHOES



# VOLUMINOUS BULBOUS SILHOUTTES



# EXPLORING SILHOUETTE



LAYERING MULTIPLE PUFF BALL SKIRTS, CREATING ROUND BIN BAG LIKE VOLUME.



MULTIPLE BAGS WORN ON EVERY LIMB TO CREATE SHAPES AWAY FROM BODY.



COATS AND BAGS HANGING OFF LIMBS, LENGTHENING THE BODY.



PUFF BALL SKIRTS OVER SHOULDERS, CREATING TOP HEAVY VOLUME.



# LOOKING AT LOO SIGNS



ARM BY SIDES  
SLASH NECK



DOLL LIKE / GIRLY



LADYLIKE STANCE

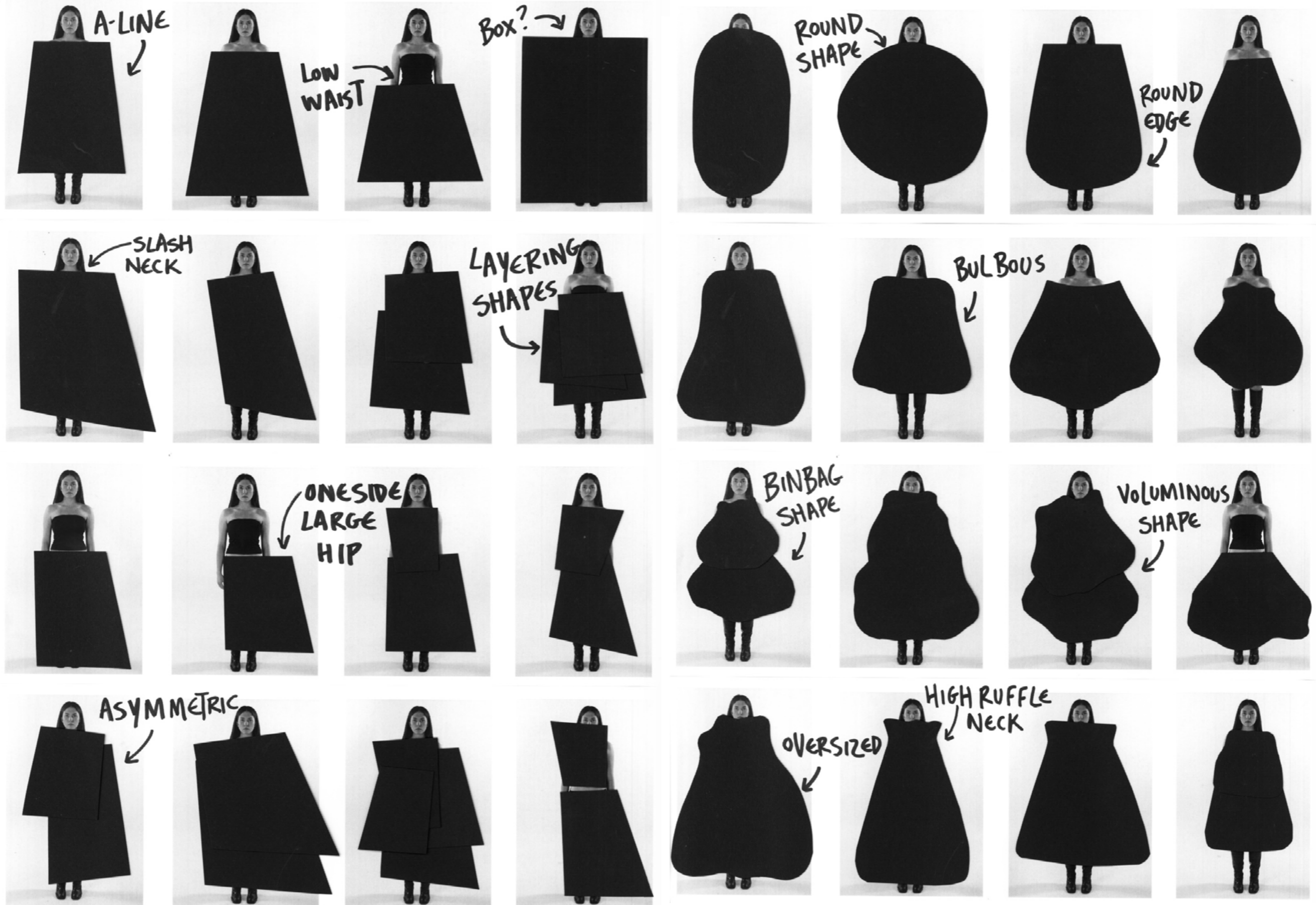


A-LINE  
SMALL WAIST  
LEGS TOGETHER

WHAT SHOULD A WOMAN BE?

INSPIRATION DRAWN FROM  
THE SIMPLE GENERIC SHAPES  
OF FEMALE LOO SIGNS.  
WHAT IS THE REASONING  
BEHIND THE CLASSIC A-LINE  
SHAPE WITH A TINY WAIST.

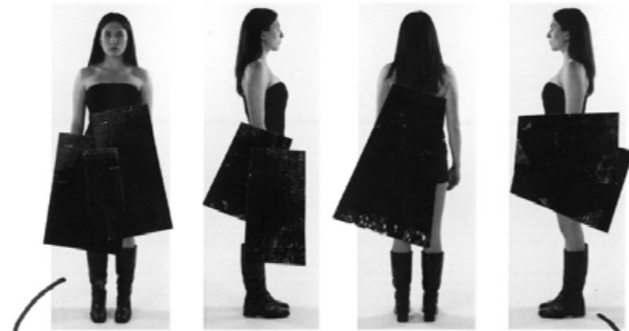
# 2D SHAPES TO 3D STRUCTURES



# TEXTURE AS SILHOUETTES



→ UNEVEN HEM LINES

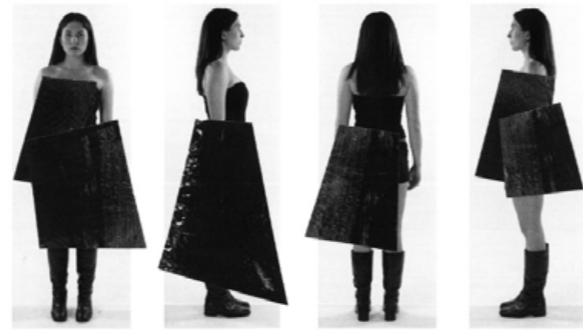


→ PLEAT LAYERS

SHAPES AWAY FROM BODY



WRAP A LINE  
← HORIZONTALLY  
AROUND BODY



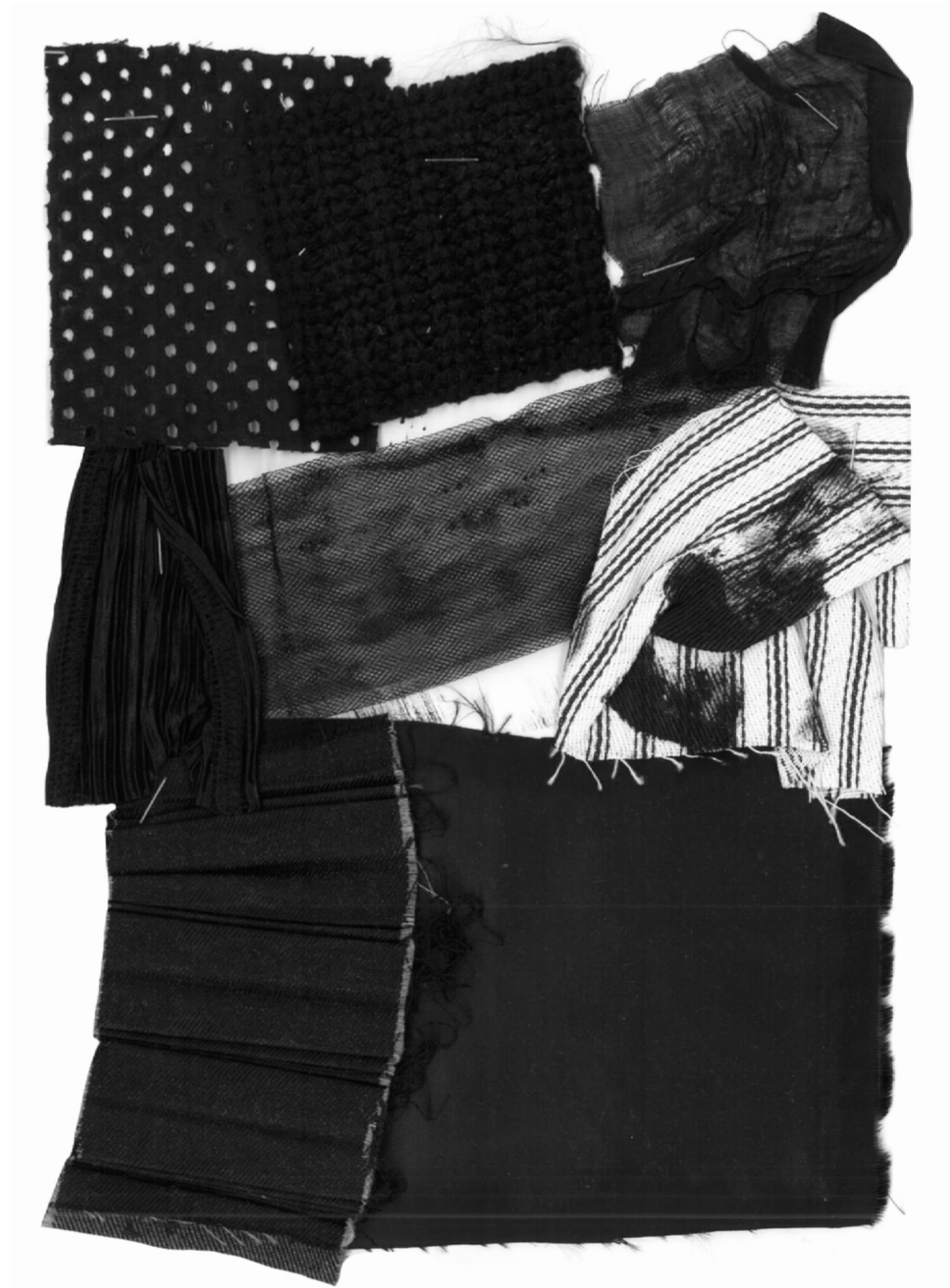
SCRUNCHED  
TAFFETA



PLEATED  
DENIM

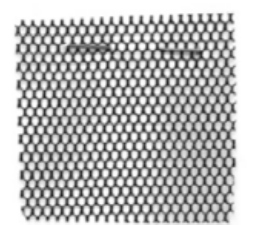


STIFFENED  
RIB-JERSEY

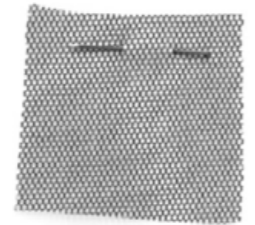




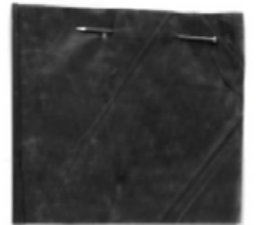
# Look 1: CREATING A FABRIC FROM BIN BAGS



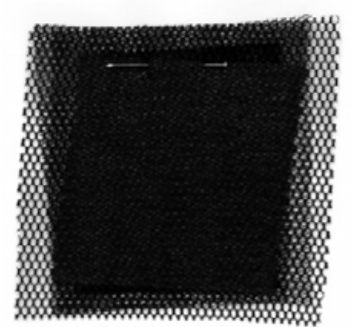
THICK MESH



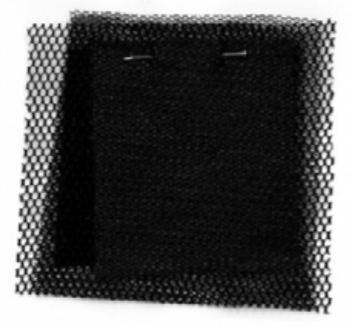
THIN MESH



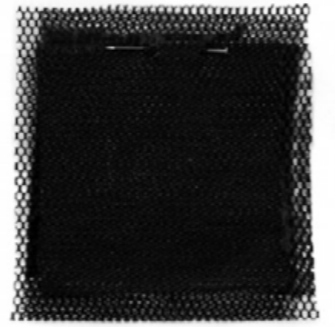
M&S BINBAG



1 LAYER OF BINBAG



2 LAYERS OF BINBAG

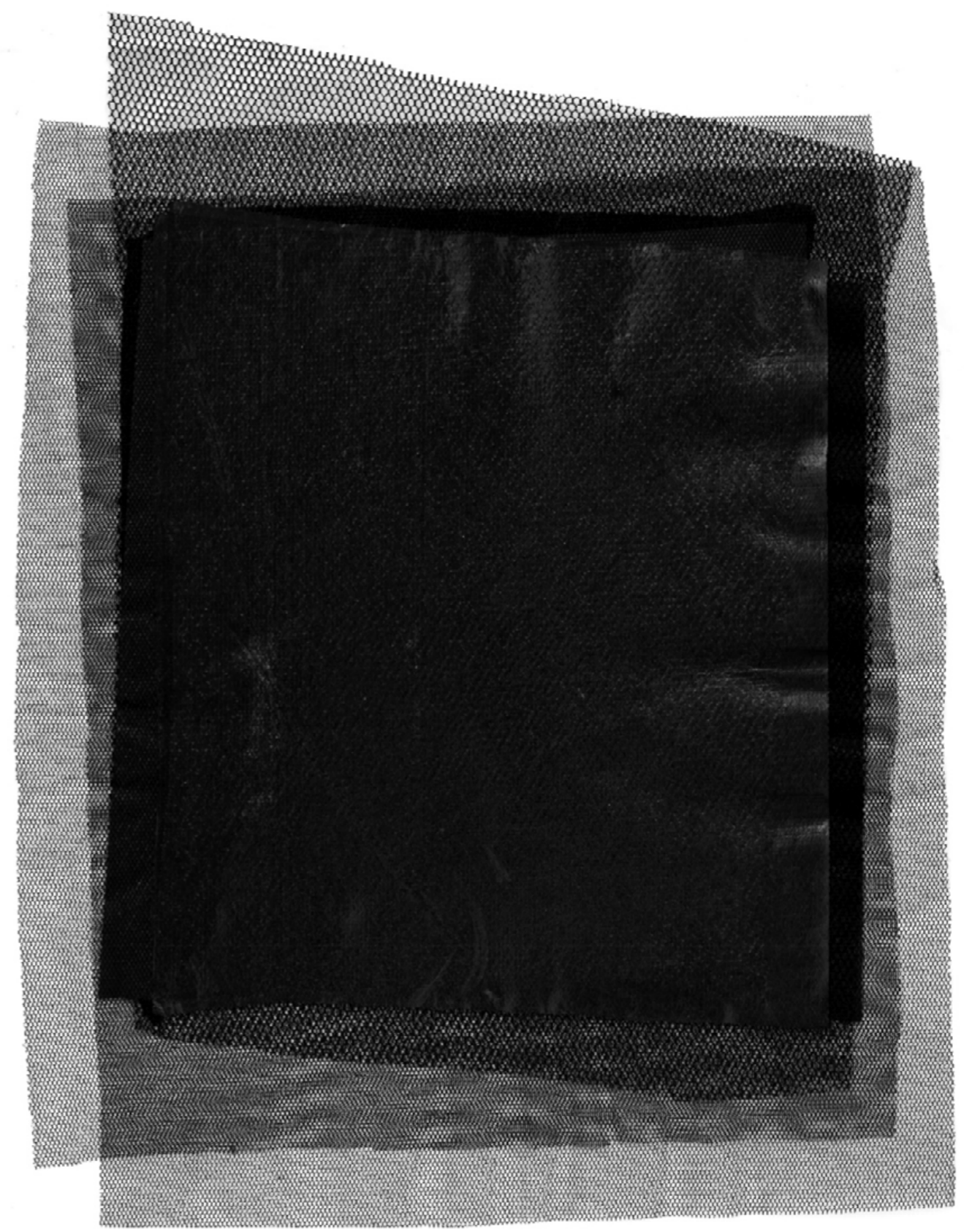


3 LAYERS OF BINBAG



BECAME BURNT/CRINKLED ANYTHING OVER 160°

FINAL FABRIC CREATED BY LAYERING 2 SHEETS OF BIN BAGS IN BETWEEN EACH MESH LAYER. HEAT-PRESSED FOR 40 SECONDS AT 140°, FOLLOWED BY A COLD PRESS FOR A MINUTE, THEN FLIPPED OVER AND REPEATED 3 TIMES.



# Look 1: TOP DEVELOPMENT



HIGH NECK TOP INSPIRED BY SLASH NECK FROM LOO SIGNS.



# LOOK 2: DEVELOPING THE BINBAG DRESS



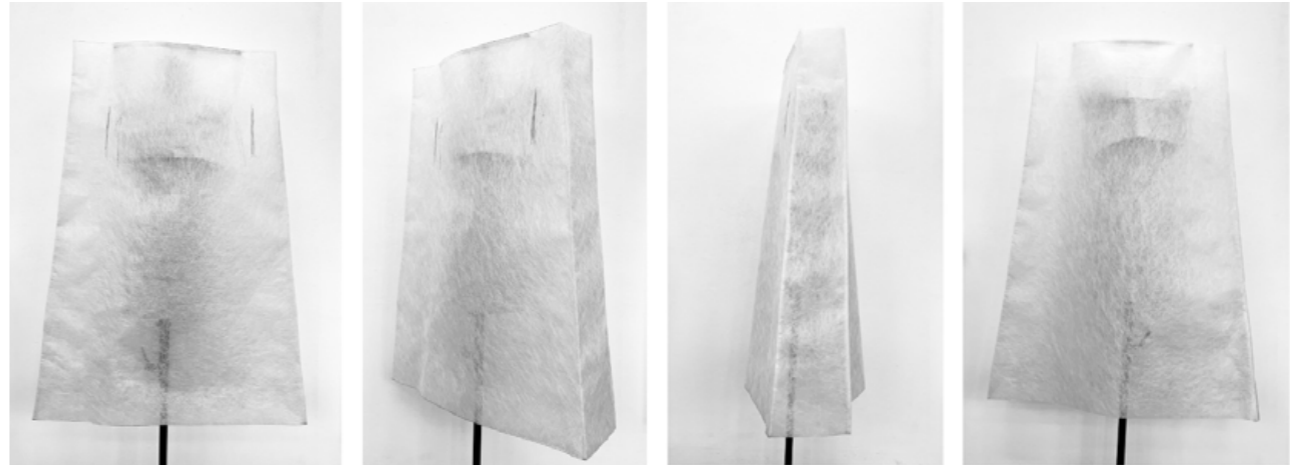
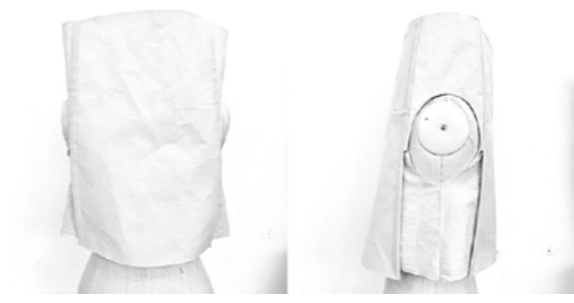
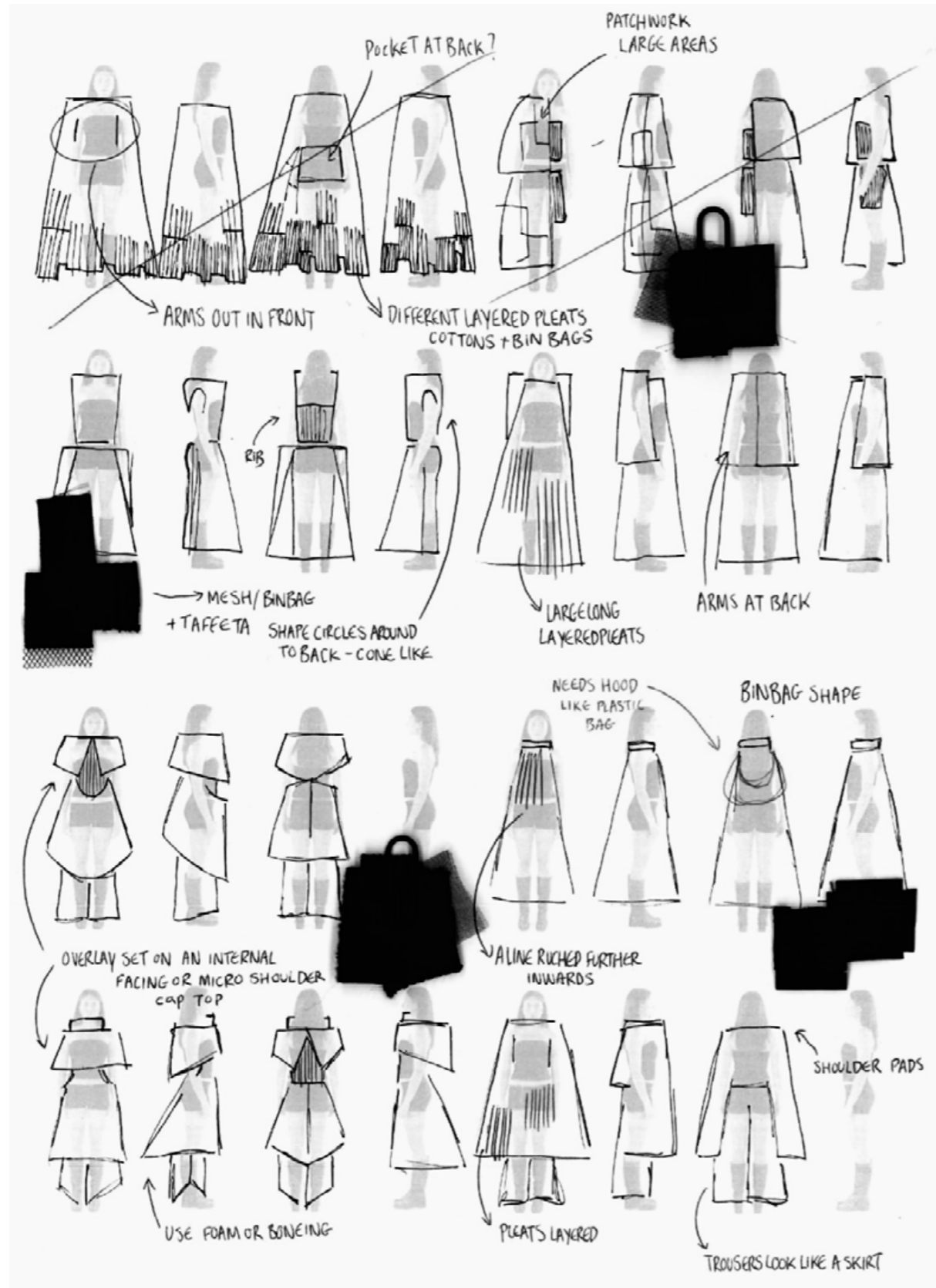
RECREATE DRESS WITH THE SAME SILHOUTTE  
WHEN HOLDING A BINBAG AT THE TOP,  
RUFFLES AT TOP AND A BALLOON, A-LINE,  
PUFFBALL SHAPE AROUND BOTTOM.



# GATHERING NECKLINE



# LOOK 3: DEVELOPMENT OF A-LINE BOX



- PLEAT FABRICS**
- CHIFFON
  - POWER MESH
  - PLEATED COTTON
  - TAFFETA
  - DRILL



# TRAGEDY OF THE PRETTY GIRL



LOOK 1

LOOK 2

LOOK 3