

My Final Major Project is a size-inclusive women's wear collection that tells the story of my grandfather relocating to the Falkland Islands in the 1950s—a remote, rural area known for its simple, isolated way of life. Growing up, the tales of these islands were woven into my childhood memories, painting a vivid picture of a place often described as "lost in time."

Drawing inspiration from the windswept hills and heathlands of the Falkland Islands, I have created a six-outfit collection featuring textile elements such as boiled wool and knit. I delved into my personal connection to this distant place through my collection, reflecting my vibrant perceptions of the Falklands. The extreme winds that define the islands are expressed in my collection featuring a windswept look throughout. I have incorporated washing lines into my project which was inspired by the winds that sweep across the islands. It is said that nothing grows above ankle height in the Falkland Islands; this is echoed throughout my collection, with all garments designed to be above ankle length.

In my collection, I integrated structural elements using wooden doweling, symbolizing the basic, stripped-back living in the Falkland Islands. This concept is also inspired by milkmaid carrying poles and incorporates references to the Land Army.



[annamillerfashion](#)



[annamillerfashion](#)



[Anna Miller - LinkedIn](#)

Concept

THE FALKLAND ISLANDS 1950

Showing principal boundaries of farms
of owners or lessees (at January
Principal farm settlements.

Scale 1:250,000



Silhouette development



Idea came from this collage



Margiela 2011 Spring



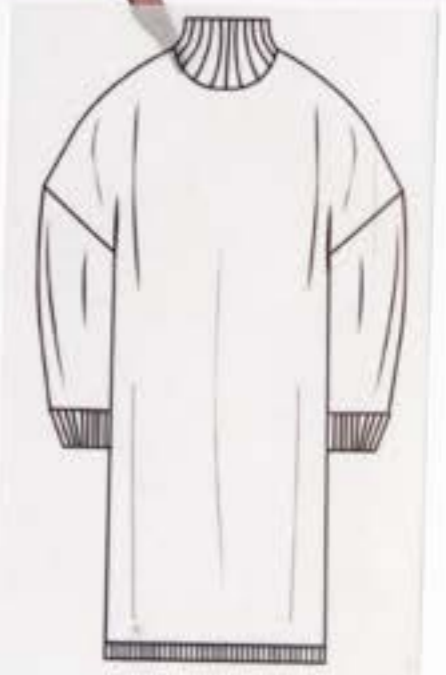
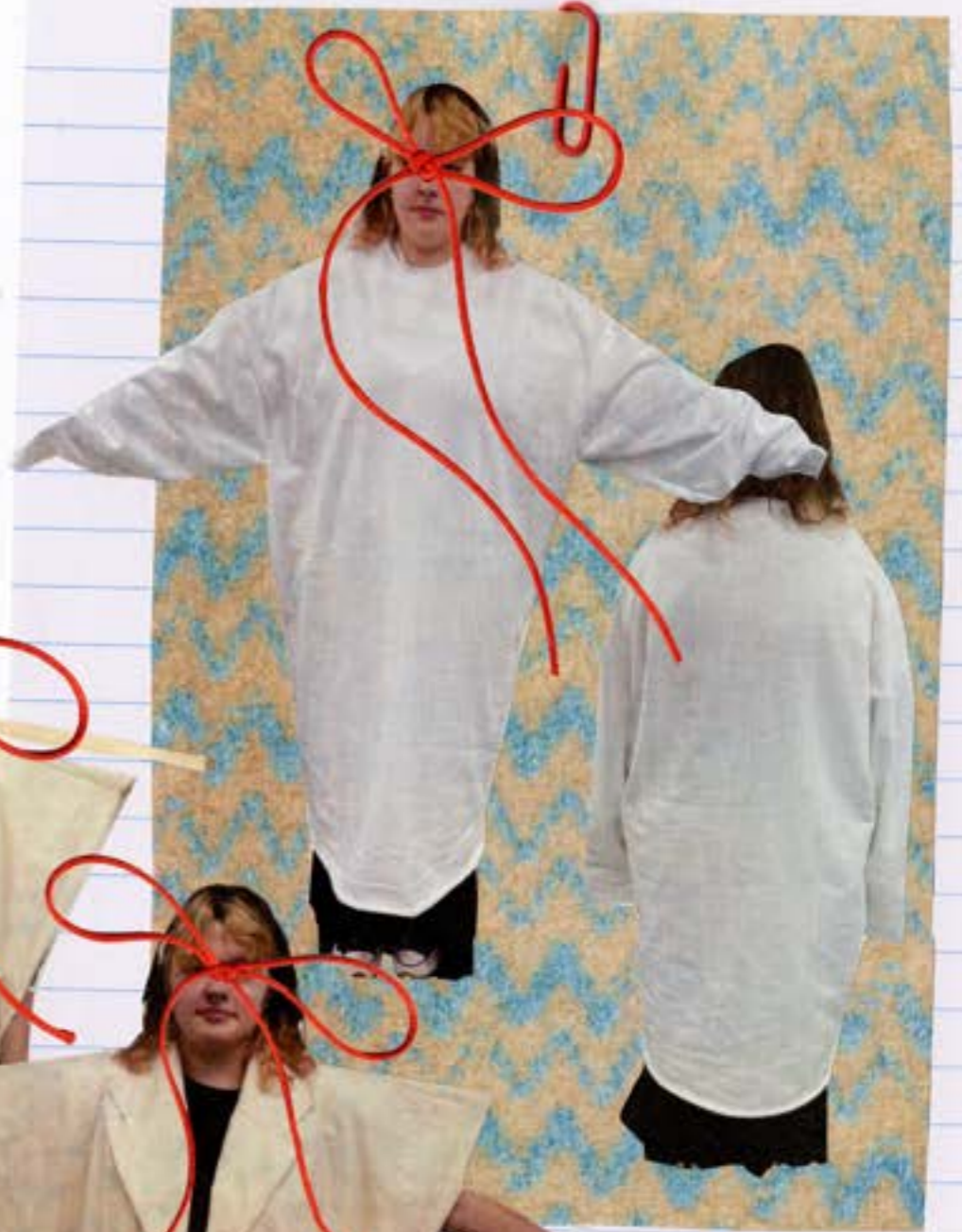
Collages



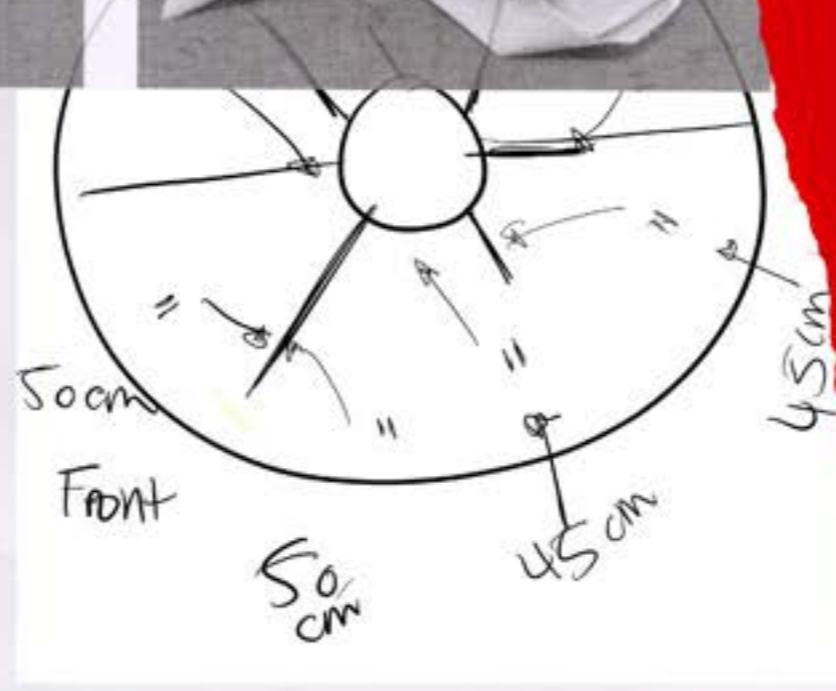
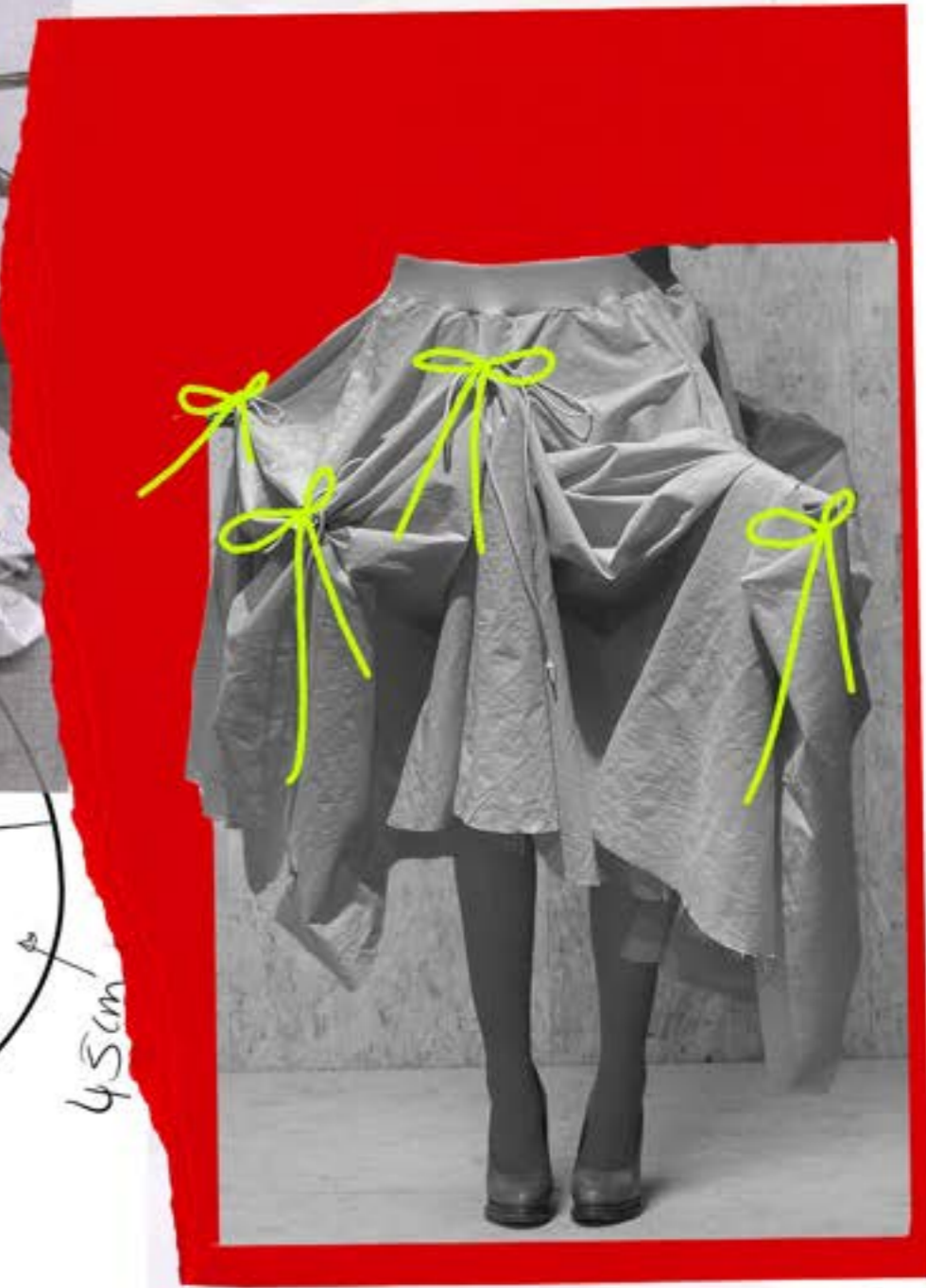
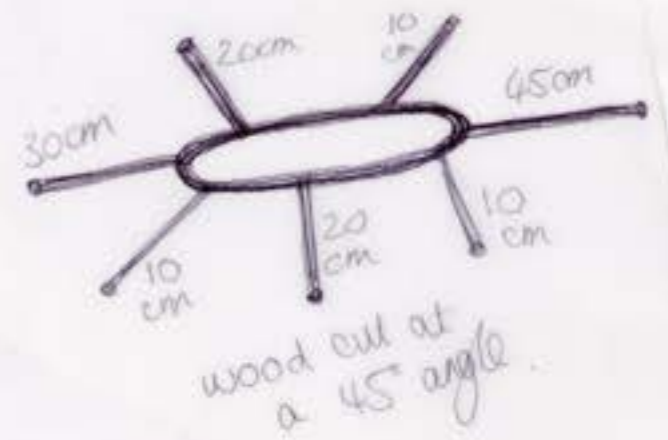
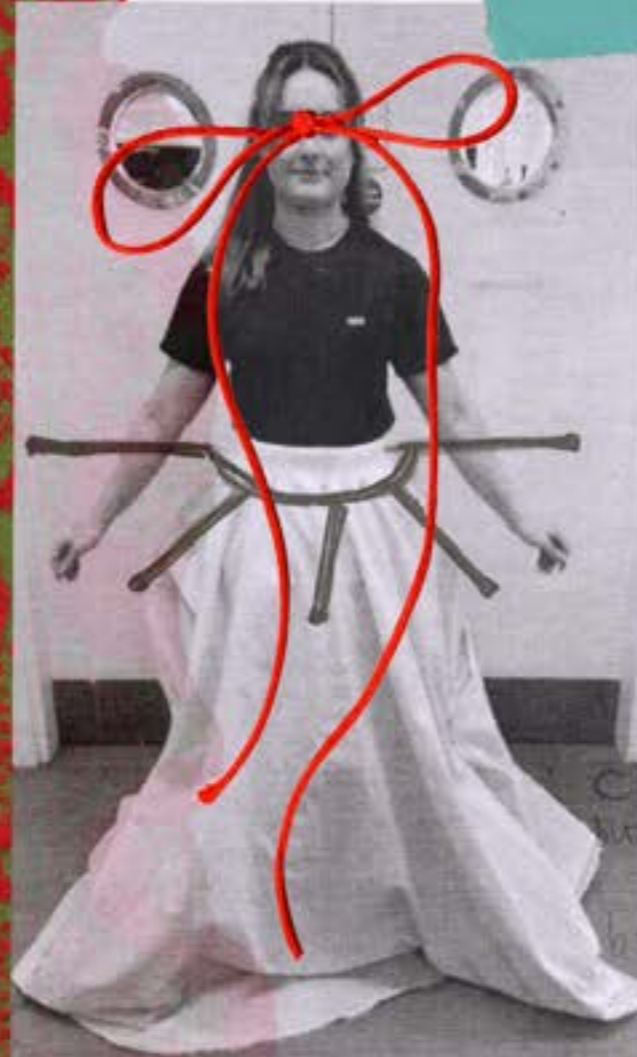
Drapes with wooden doweling



Outfit 4 Development



Outfit 2 development

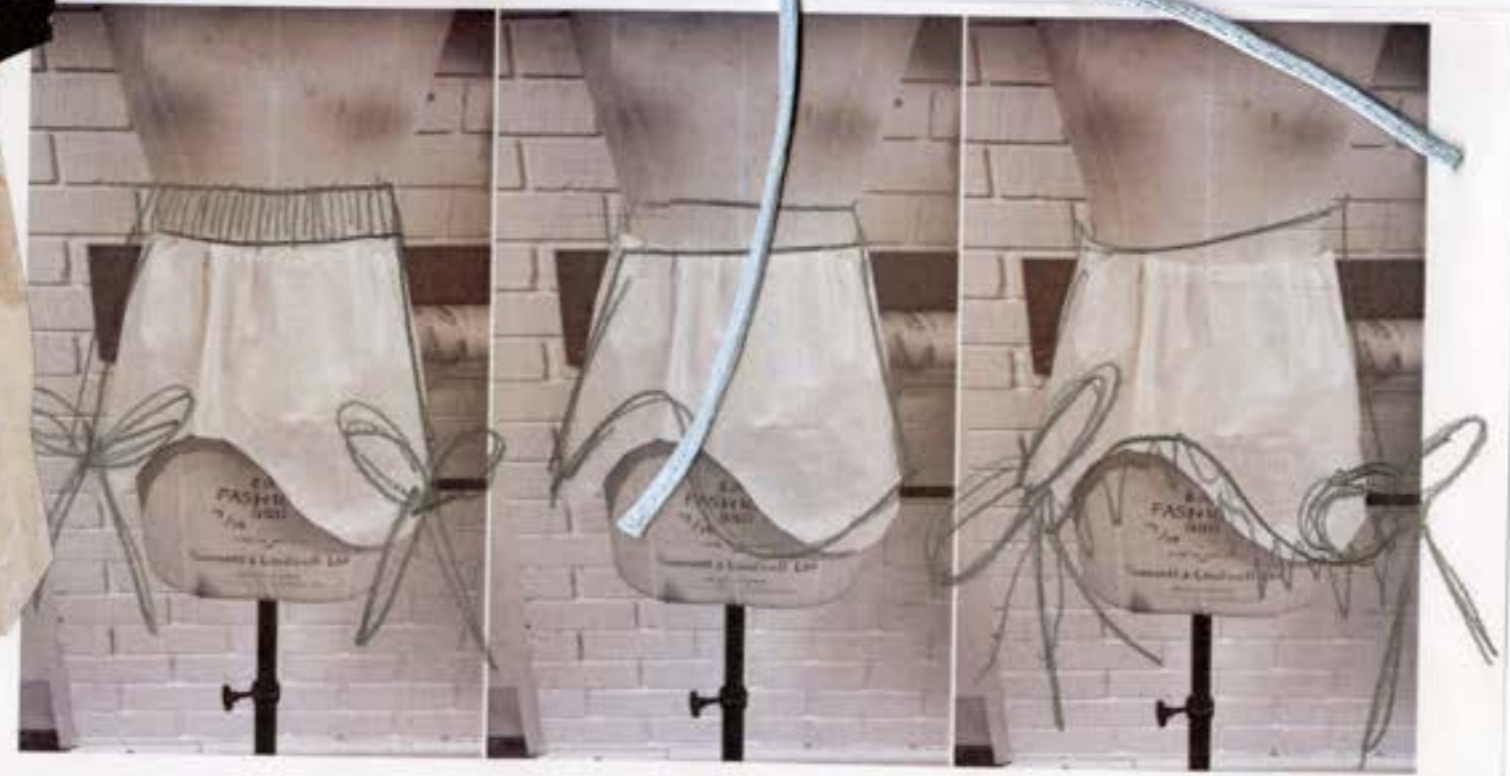
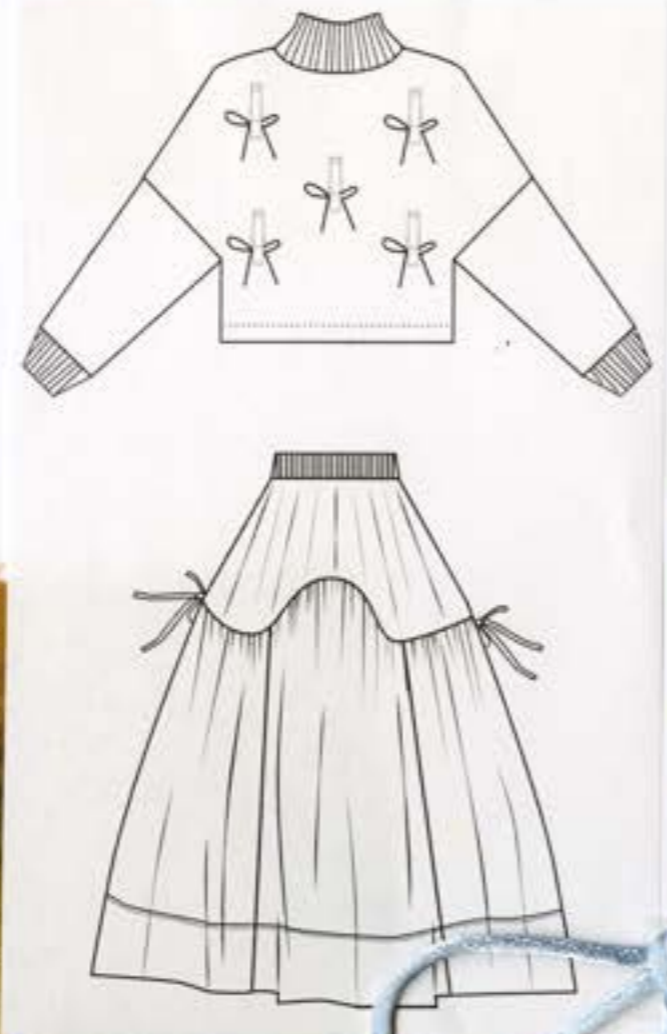


Outfit 2 Process

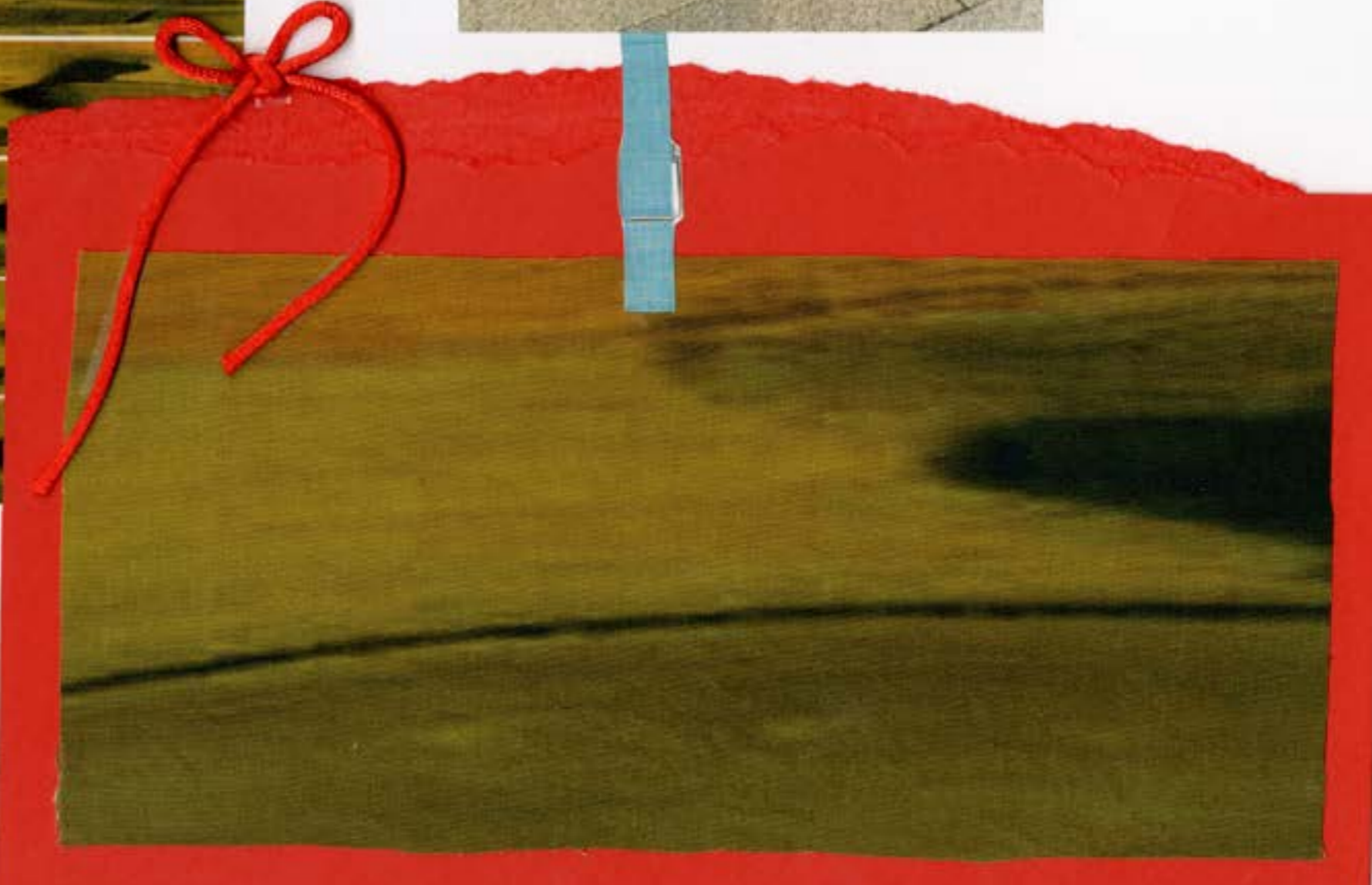


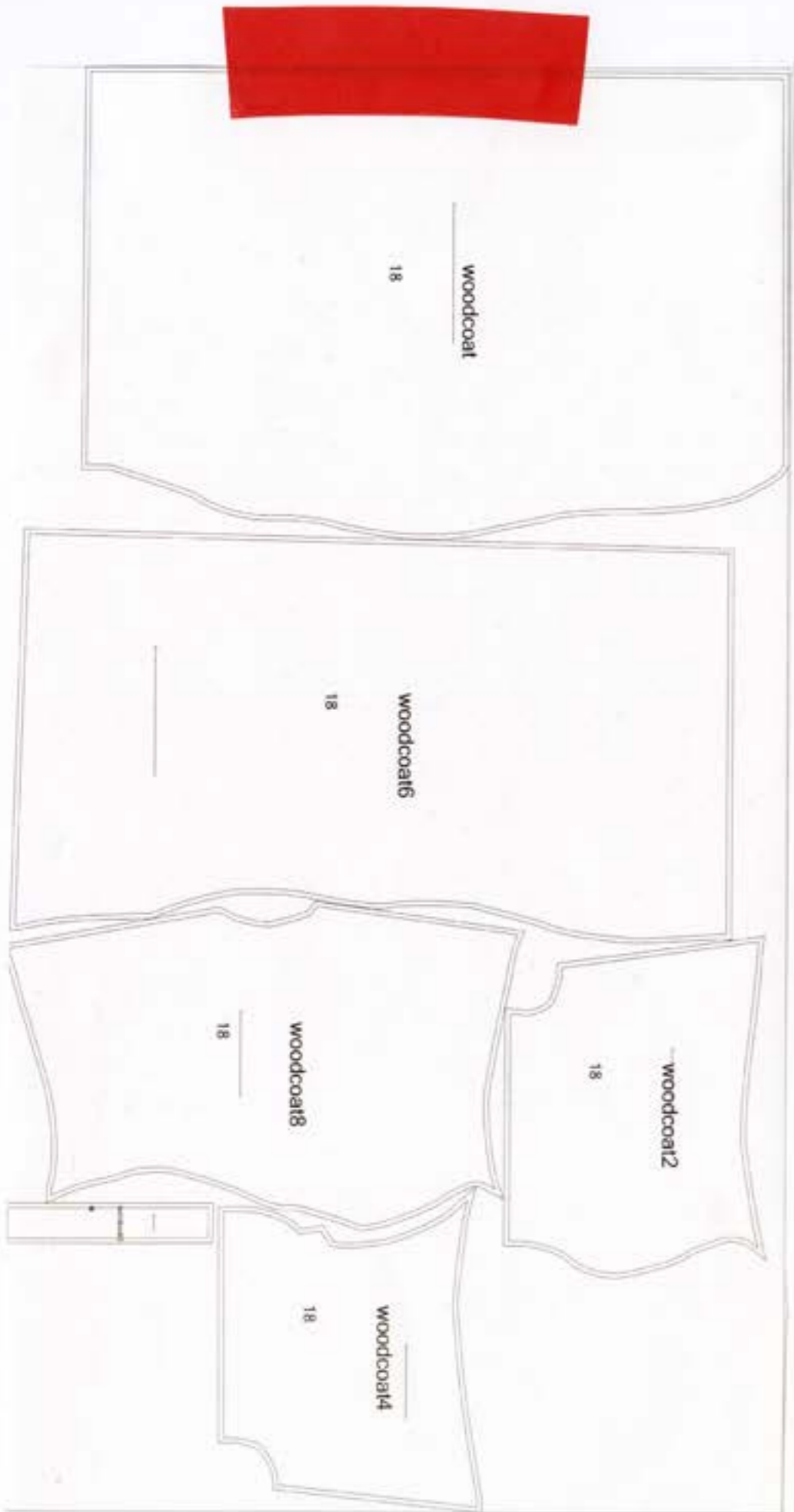
Name: halfskirtpaper Length: 2,443 m Width: 1,590 m Efficiency: 58,16 %

Outfit 1 Development



Print Development





Name: woodcoatpaper Length: 2,933 m Width: 1,590 m Efficiency: 76,19 %

Size specification

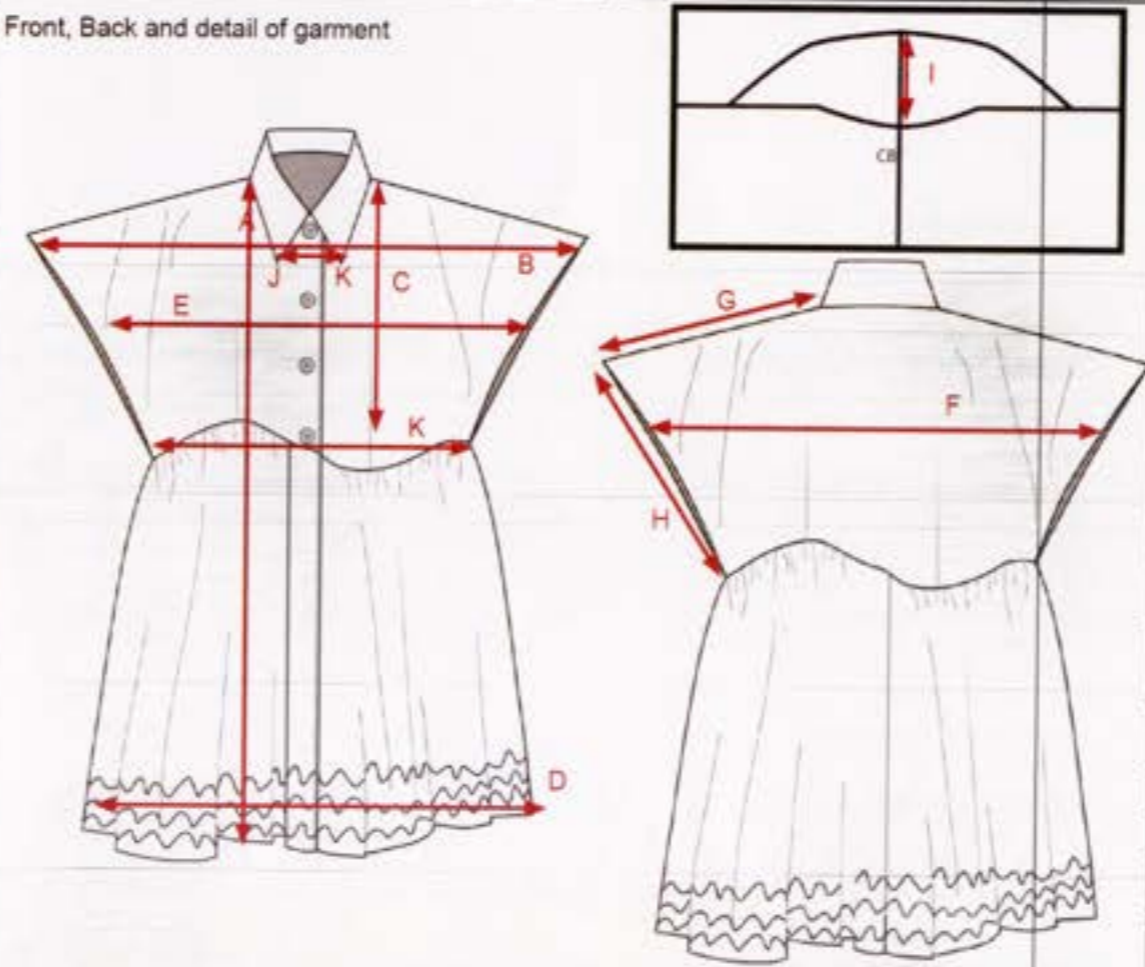


SIZE SPECIFICATION

Fabric composition - Calico

Date: 25/11/2023
Block ref: size 20 hi

Front, Back and detail of garment

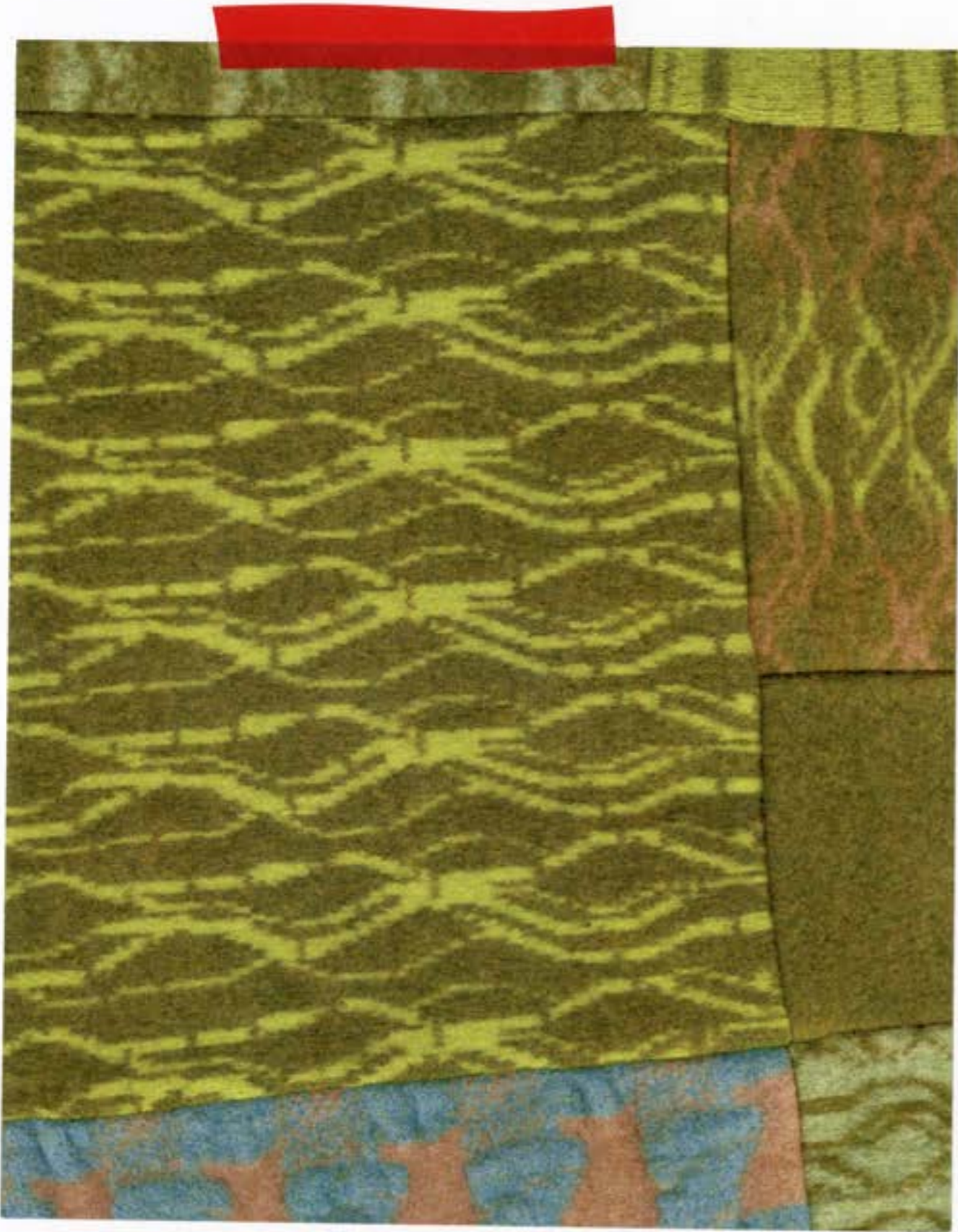


Measurements Taken Flat metres

- A Length from side neck hem
- B Bust - 2.5cm below ar (armhole notched)
- C Waist - 39cm below six point
- D Hem Width
- E Across front - 15cm fro
- F Across back - 15cm frc
- G Shoulder seam Length
- H Armhole - straight
- I Collar depth at CB
- J Collar point to poin
- K Hip line



Patchwork boiled wool



Fabric

NAME, ADDRESS, AND CITY, ETC. NO. _____ P.M. 21.

Name of Ship "THE GREAT BRITAIN" Date of Departure 24th JULY 1912

Steamship Line WHITE STAR LINE, LONDON Where Bound THE FINEST VOYAGE

NAMES AND DESCRIPTIONS OF **BRITISH** PASSENGERS EMBARKED AT THE PORT OF LONDON



Line up

4



5



6



Line up

1



3

