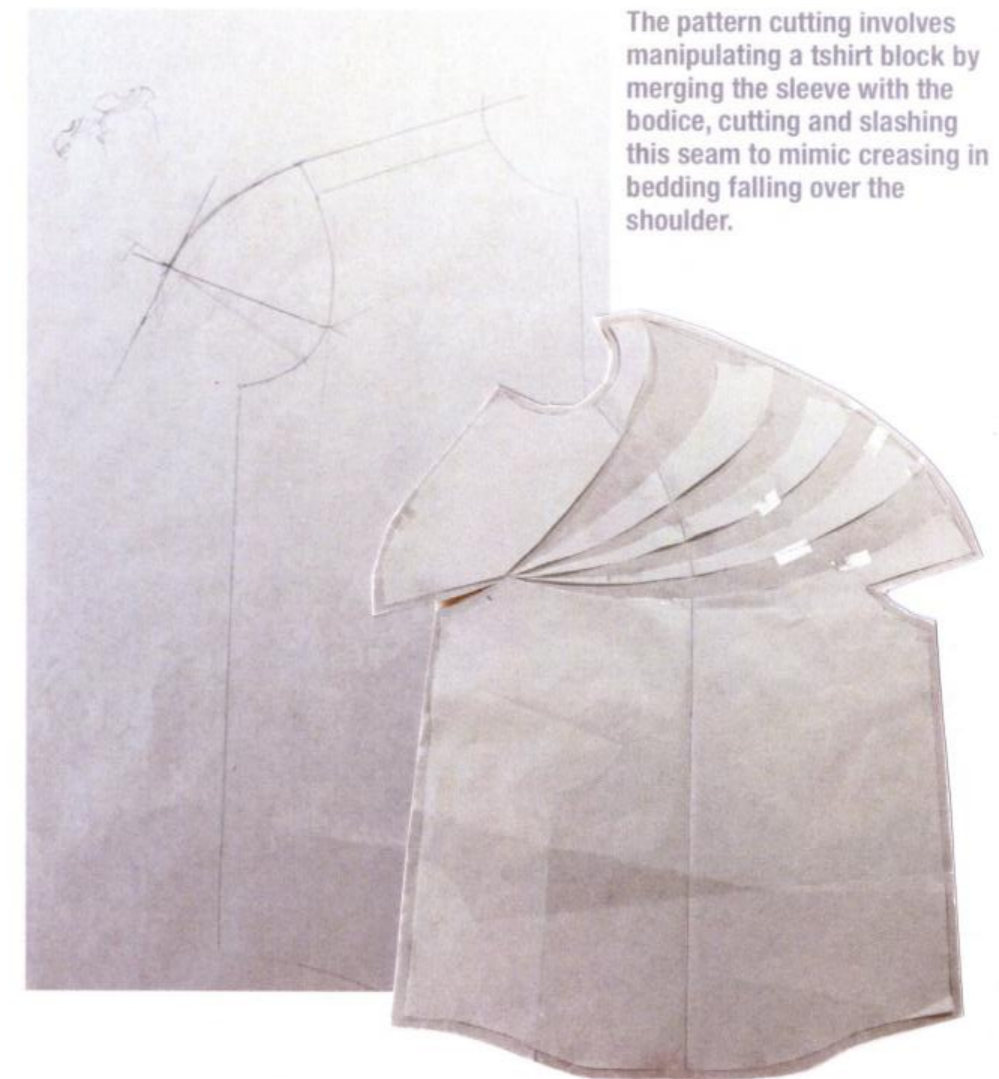
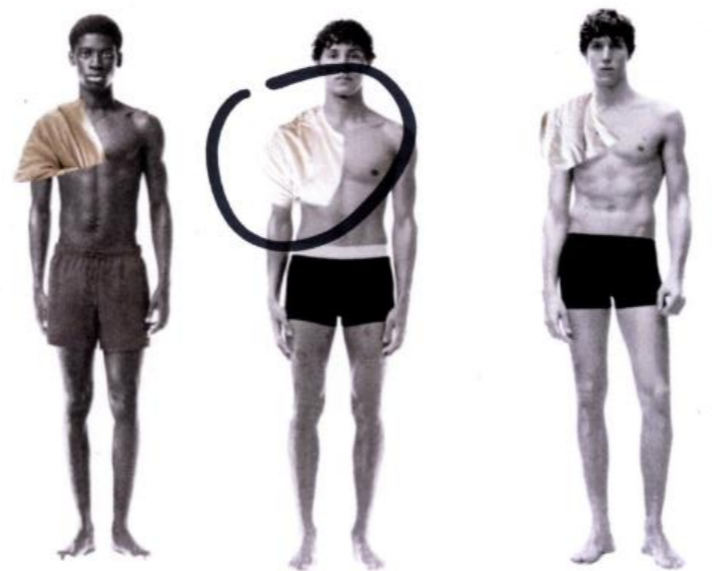


# Moment To Arise

Moment to arise is a menswear collection inspired by the interaction between the body and bedding, offering an abstract form of comfort and security, in times of uncertainty spanning the globe. Using a multi-layered approach to pattern cutting, moving through 2D and 3D techniques. Using experimental drapes of bedding on the stand and body to inform design ideas and silhouettes. Translating them into garments by using elements of subtraction cutting combined with commercial blocks to create innovative silhouettes emulating bedding features, while retaining functionality and wearability, the fundamentals of menswear. Developing this technique by using half scale toiles, digitising and manipulating patterns on Lectra and prototyping designs in Clo3D to inform a more sustainable and less wasteful streamlined workflow.





The pattern cutting involves manipulating a tshirt block by merging the sleeve with the bodice, cutting and slashing this seam to mimic creasing in bedding falling over the shoulder.

The way bedding interacted with the body inspired the silhouette of the shirt, leading to experimentation with collaging drapes of bedding and applying them to the human form.



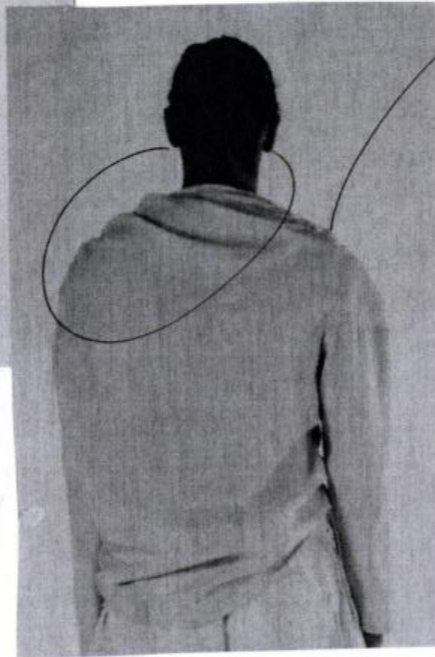
The sleeve is sewn into the extended shoulder by pivoting at the corner.



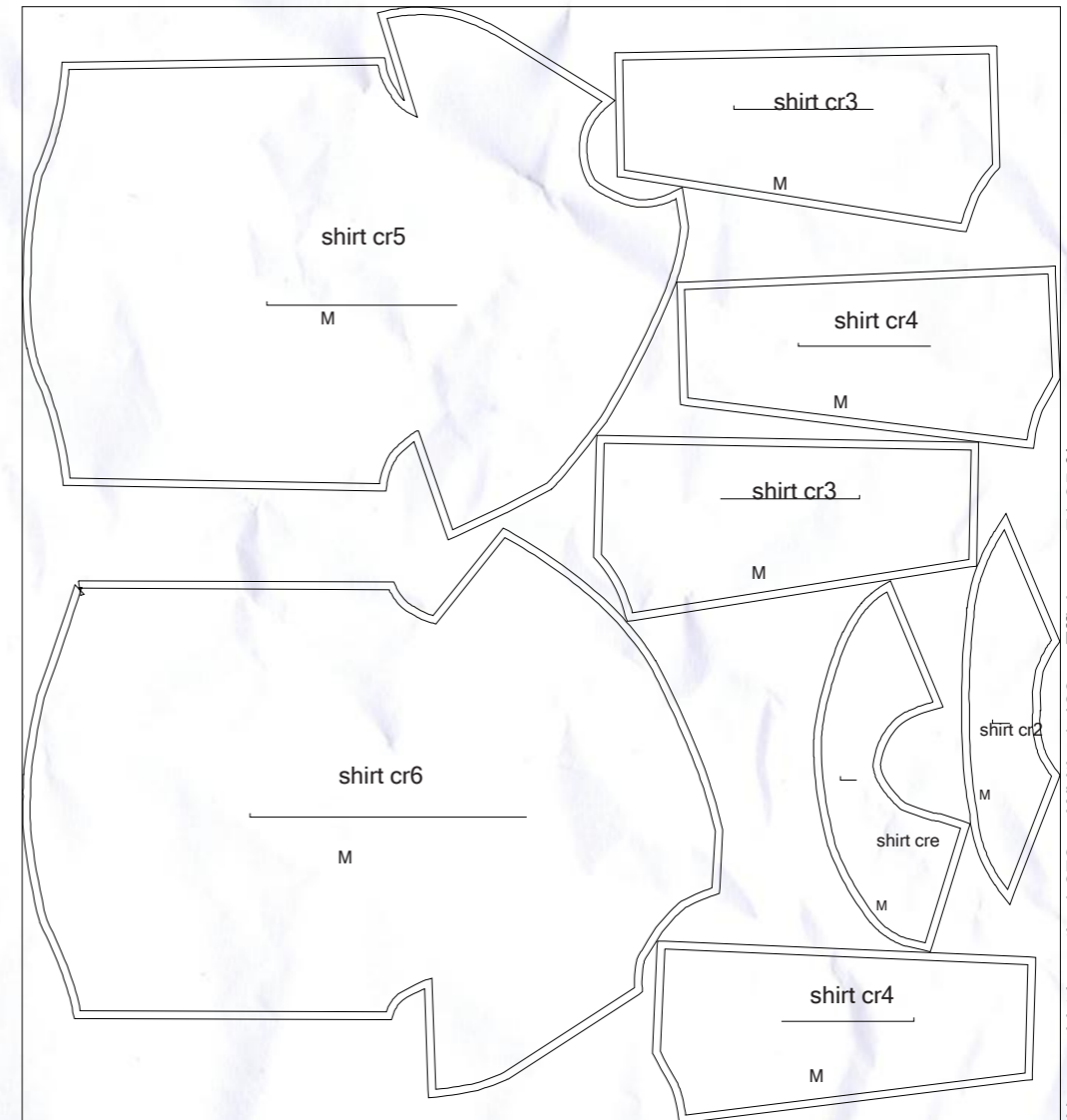
The shoulder and side seam are organically pleated to the original length of the seam using a band to conceal the stitches.



Asymetric hem



fastening on shoulder



Name: shirt Length: 1,376 m Width: 1,480 m Efficiency: 71,95 %

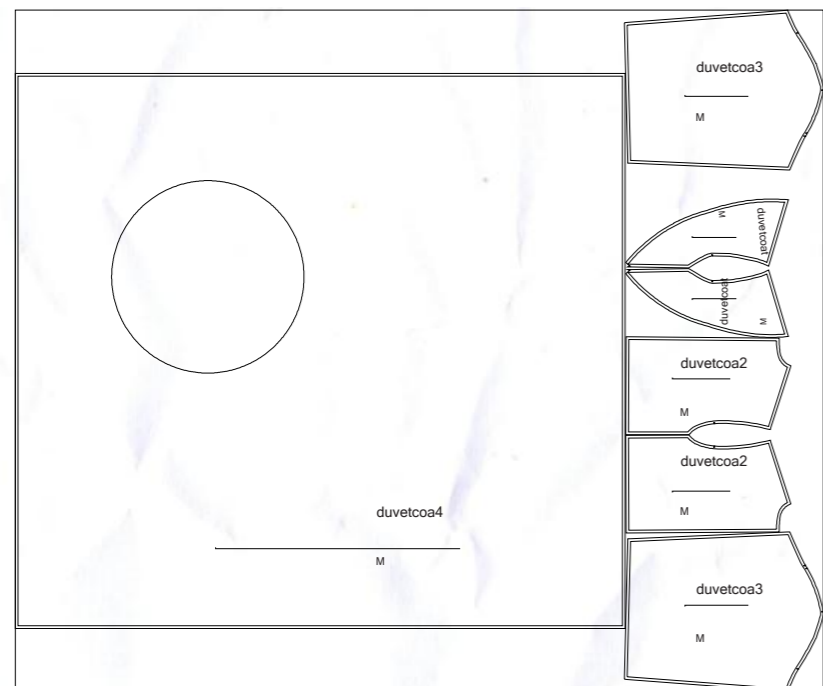
Layplan/ Marker



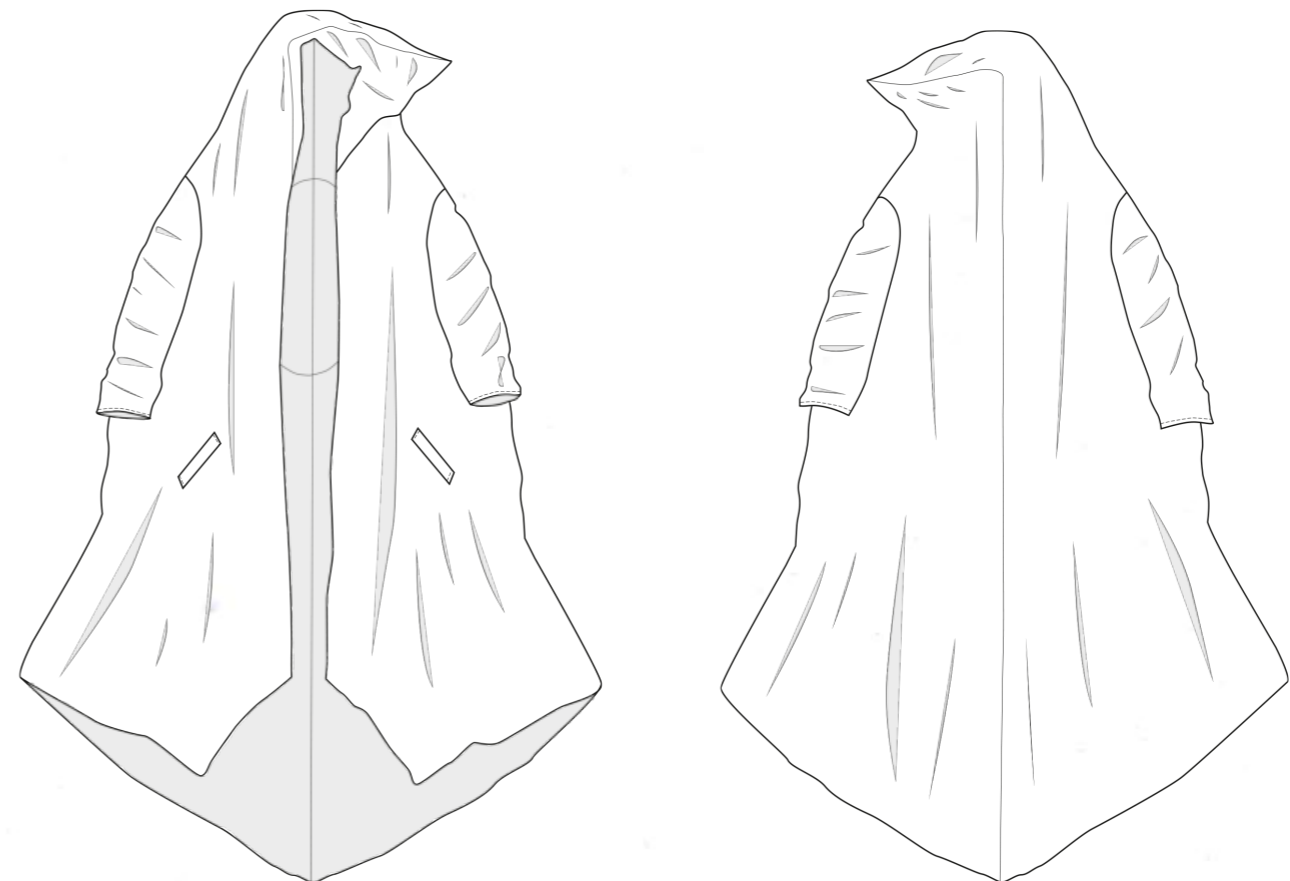
This coat is heavily inspired by being wrapped up in a duvet leading to experimental drape with duvets and applying these to the human form to inform design ideas.



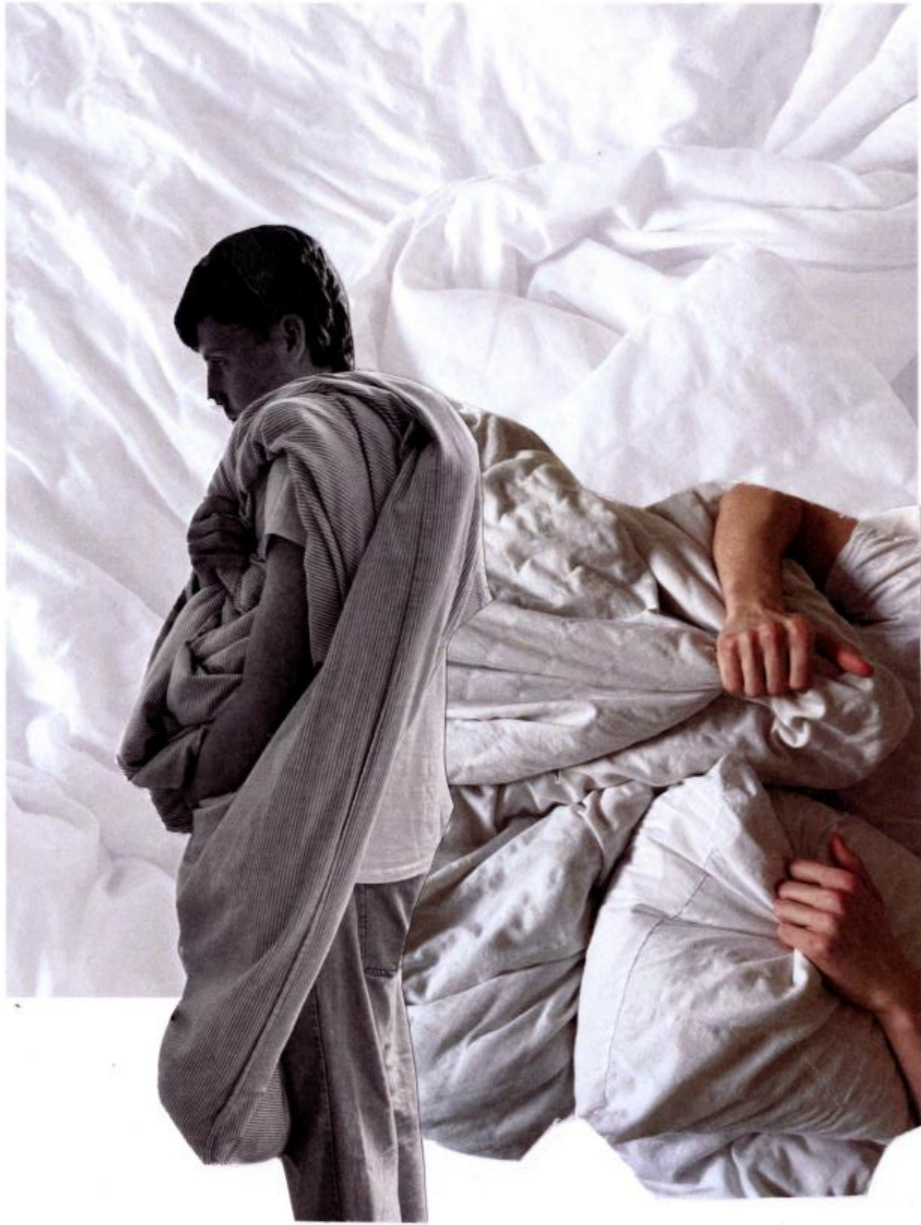
The pattern cutting involves subtracting a circle from a duvet and inserting a bodice block that has the same circumference of the circle, allowing the duvet to become a fully functional garment.



Name: DUVET\_COAT Length: 2.942 m Width: 2.480 m Efficiency: 74.20 %

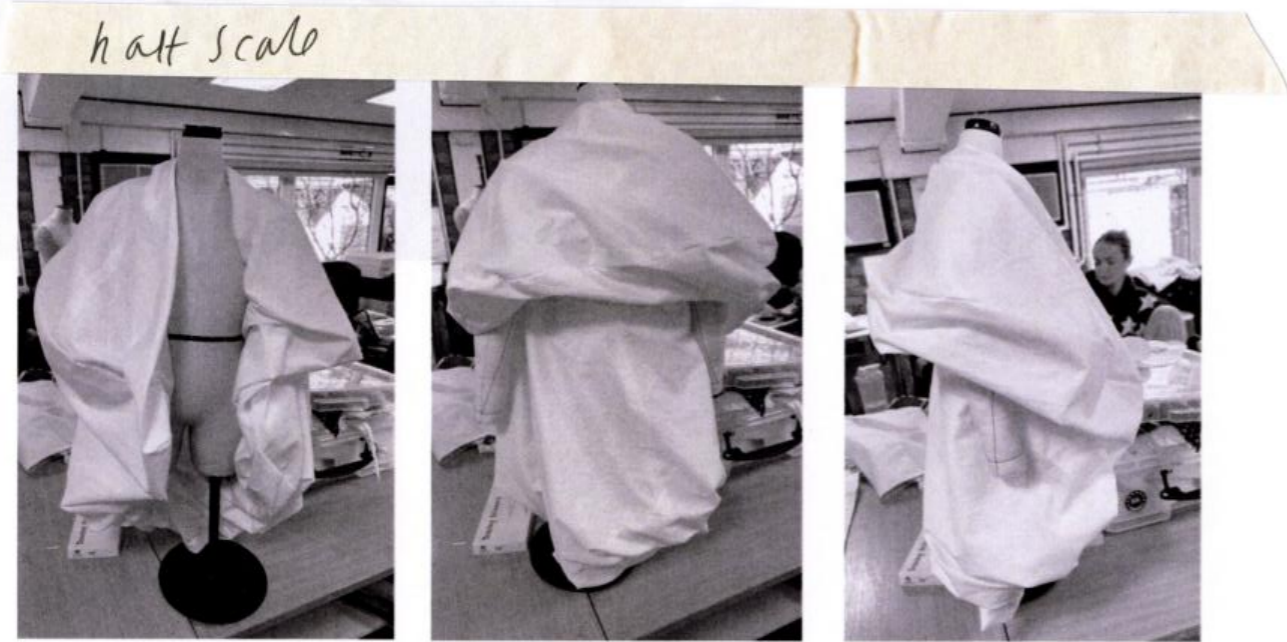


Layplan/ Marker



Creased bed sheets and the shapes created by unmade beds heavily influenced this jacket, using drapes of bedsheets and experiments with scale on the body to inform design ideas.





The jacket contains two layers that are pulled through the centre back making the jacket fully lined.

Using half scale to reserve materials when experimenting with patterns, the pattern involved a circle with a smaller circle cut out and a bodice with the same circumference sewn in making the circle wearable.





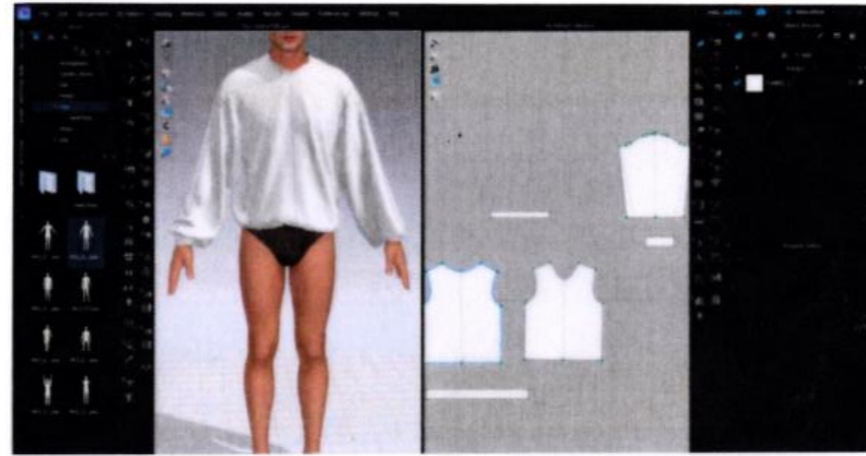


→ versatile



The jacket includes ties that make it fully adjustable and adaptable for different silhouettes and functions.





Clo3d render of Shorts and knitted jumper.

Final shorts

The Clo3D software was used to draft patterns and experiment with fabric choices and scale for a more sustainable approach to the pattern cutting and design development process.



