

JAZMINE MITCHENER

HAPPY HOUR

“Happy Hour” is a womens and menswear Spring Summer collection celebrating the spontaneity of an unexpected night out. Creating the feeling of sitting in the Italian evening sun after a day working in the city, drinking cocktails and not knowing where the the night could to take you. The collection brings in a multitude of aspects of nightlife, focussing on the lighting and mood created in cocktail bars, while also taking style and silhouette inspiration from shows you could go to. Inspired by the juxtaposition of elegance and extravagance, the collection celebrates the art of tailoring techniques while embracing the ethereal beauty of tulle fabrication. “Happy Hour” invites the wearer to immerse themselves in a world of glamour and intrigue, where every garment tells a story of elegance, extravagance, and powerful energy. A happy hour client, is the night out themselves, they make the night.

instagram: jazmine.m_fashion
Arts University Bournemouth



Sam Chirnside

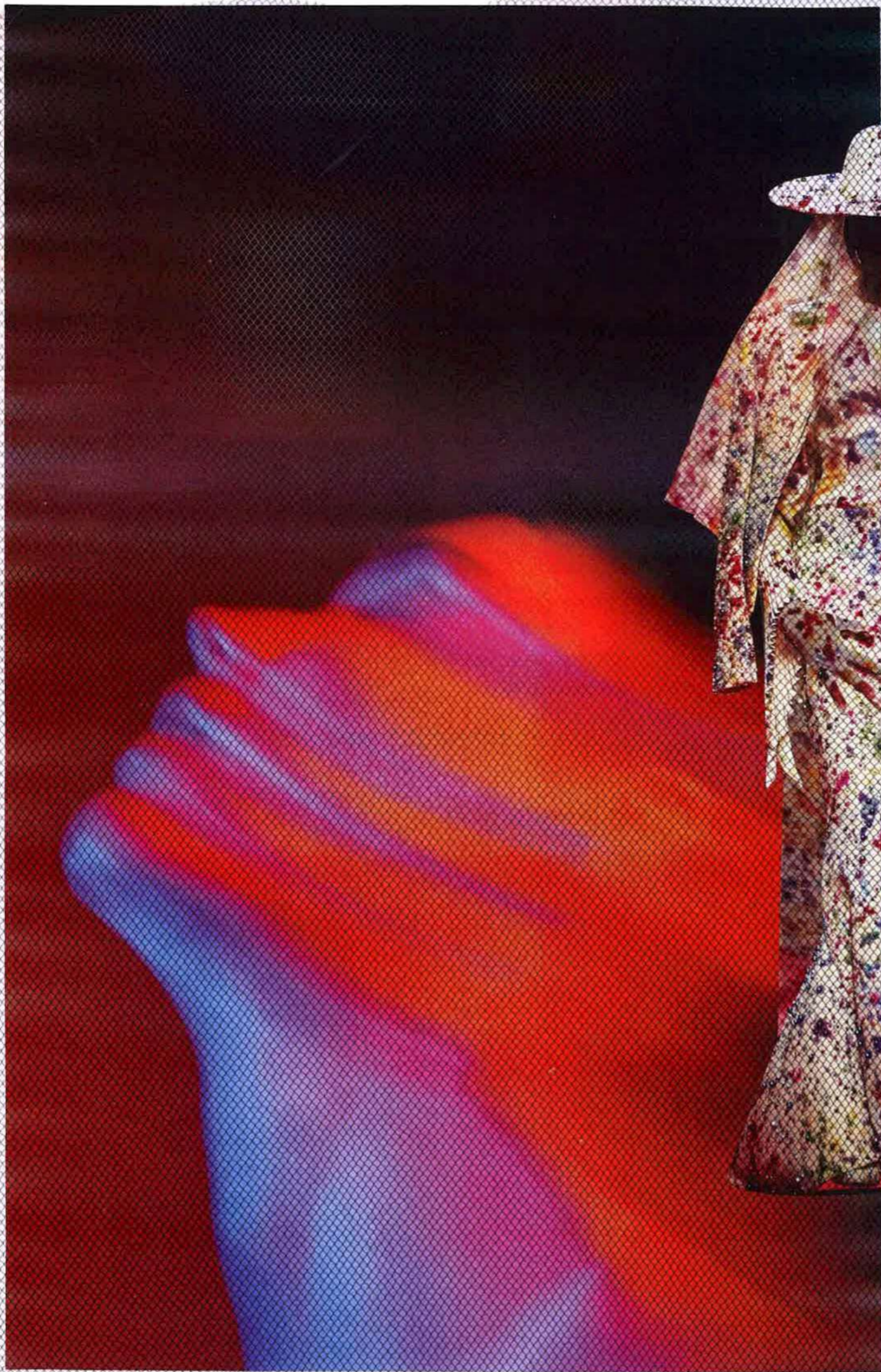


Happy hour



S/S 2025

**YOUR
SHOW
MUST
GO
ON**

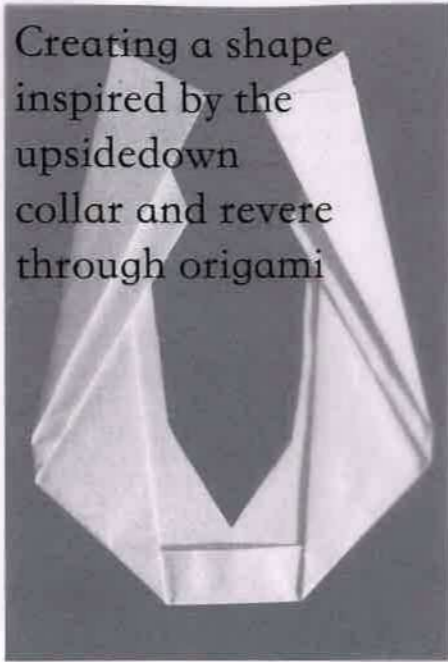


USING DRAPE TO INFORM SILHOUETTE

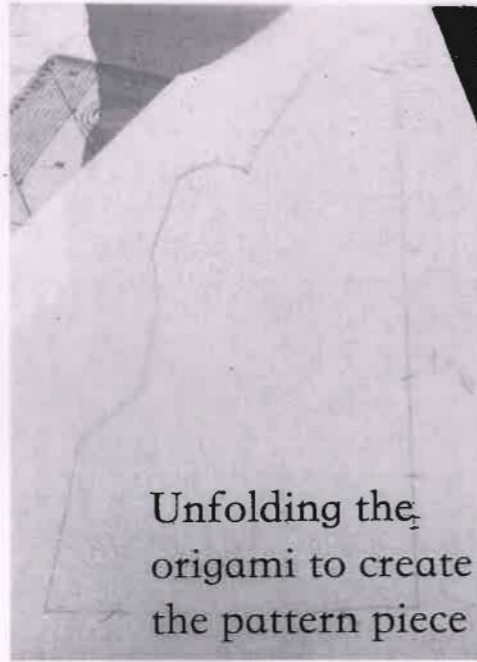
I began by draping a
menswear tailored blazer
in three ways, then cut and
collaged a range of designs
from these drapes.



Creating a shape inspired by the upsidedown collar and reverse through origami



Unfolding the origami to create the pattern piece



Translating this into fabric and assessing how it sits on a figure



Toiling this in a dress in chiffon



Using a fabric with more structure was needed to show the tailoring inspired origami in the most effective way

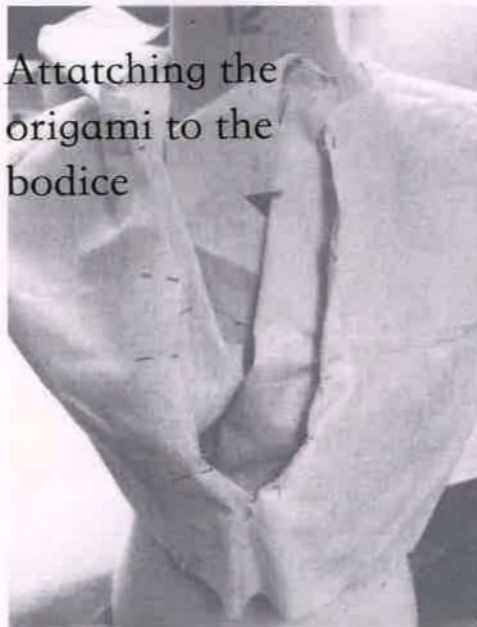


CREATING THE ORIGAMI TAILORING TECHNIQUE

Creating a fitted bodice for the origami to stand out best against



Attaching the origami to the bodice



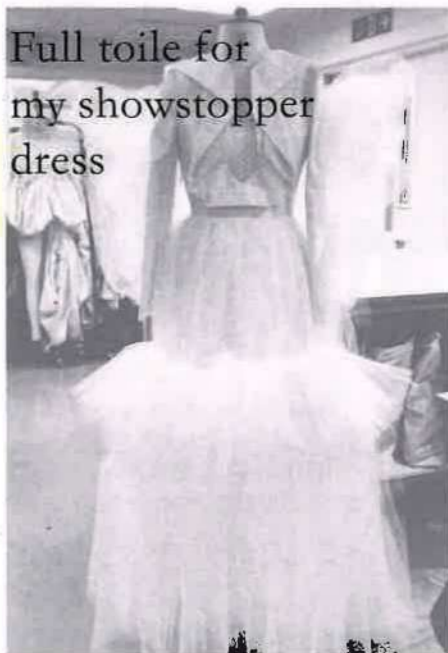
Assessing size, shape and positioning



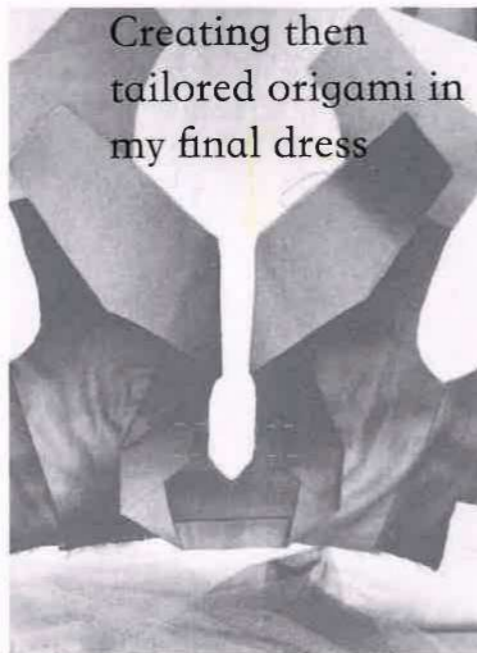
Deciding a more obvious separate layer of origami will create a stronger silhouette



Full toile for my showstopper dress



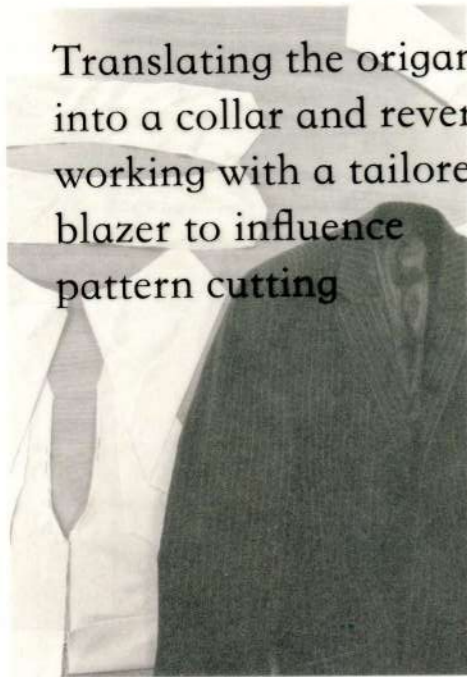
Creating then tailored origami in my final dress



Attaching the final origami



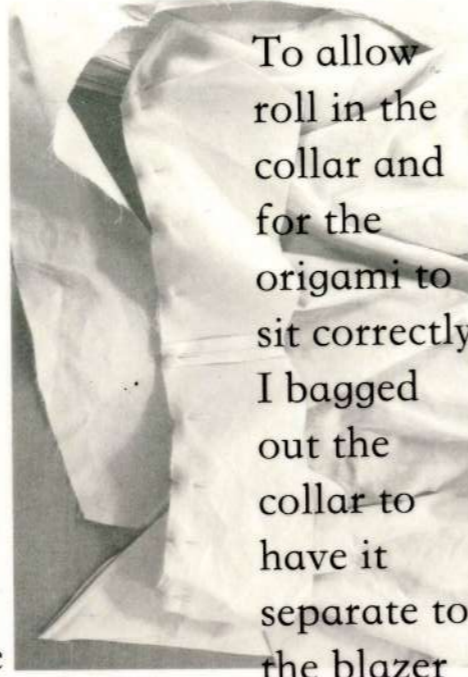
Translating the origami into a collar and reverse, working with a tailored blazer to influence pattern cutting



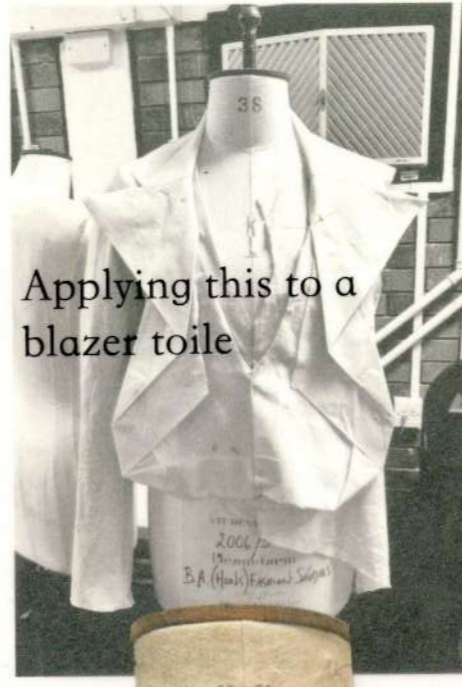
I enlarged the pattern piece, drafted a collar piece and bagged out the top of the origami creating a reverse shape



To allow roll in the collar and for the origami to sit correctly, I bagged out the collar to have it separate to the blazer

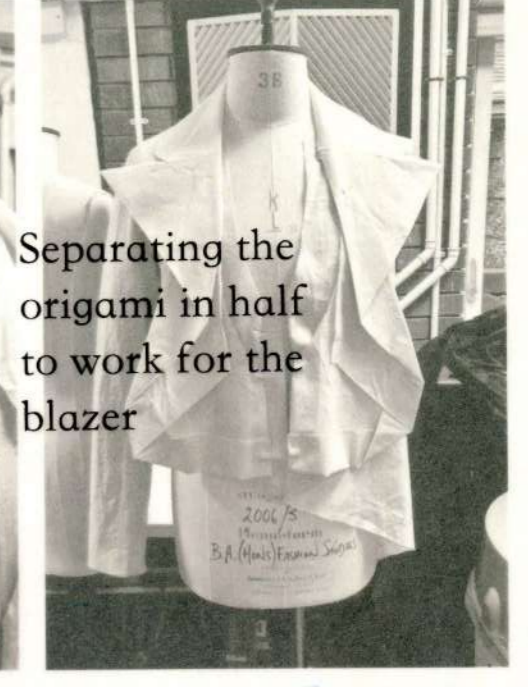
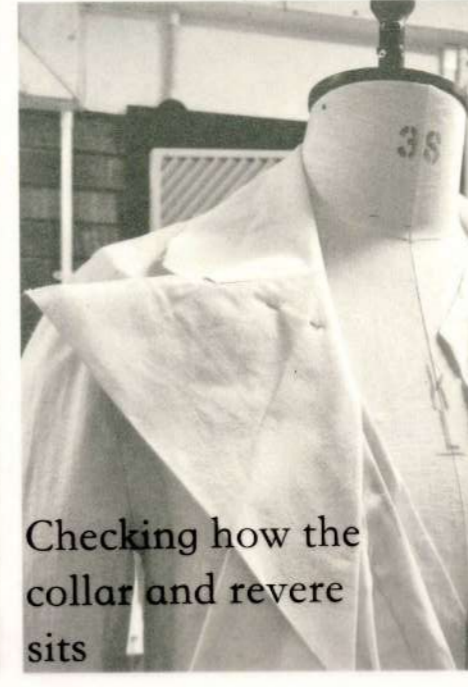


Applying this to a blazer toile



Separating the origami in half to work for the blazer

Checking how the collar and reverse sits



Working in final fabric



Using a silk and wool blend suiting



Using pinstripe to enhance the folds in the origami



1,500 m Efficiency: 67,06 %

SIZE SPECIFICATION

Name: Jazmine Mitchener

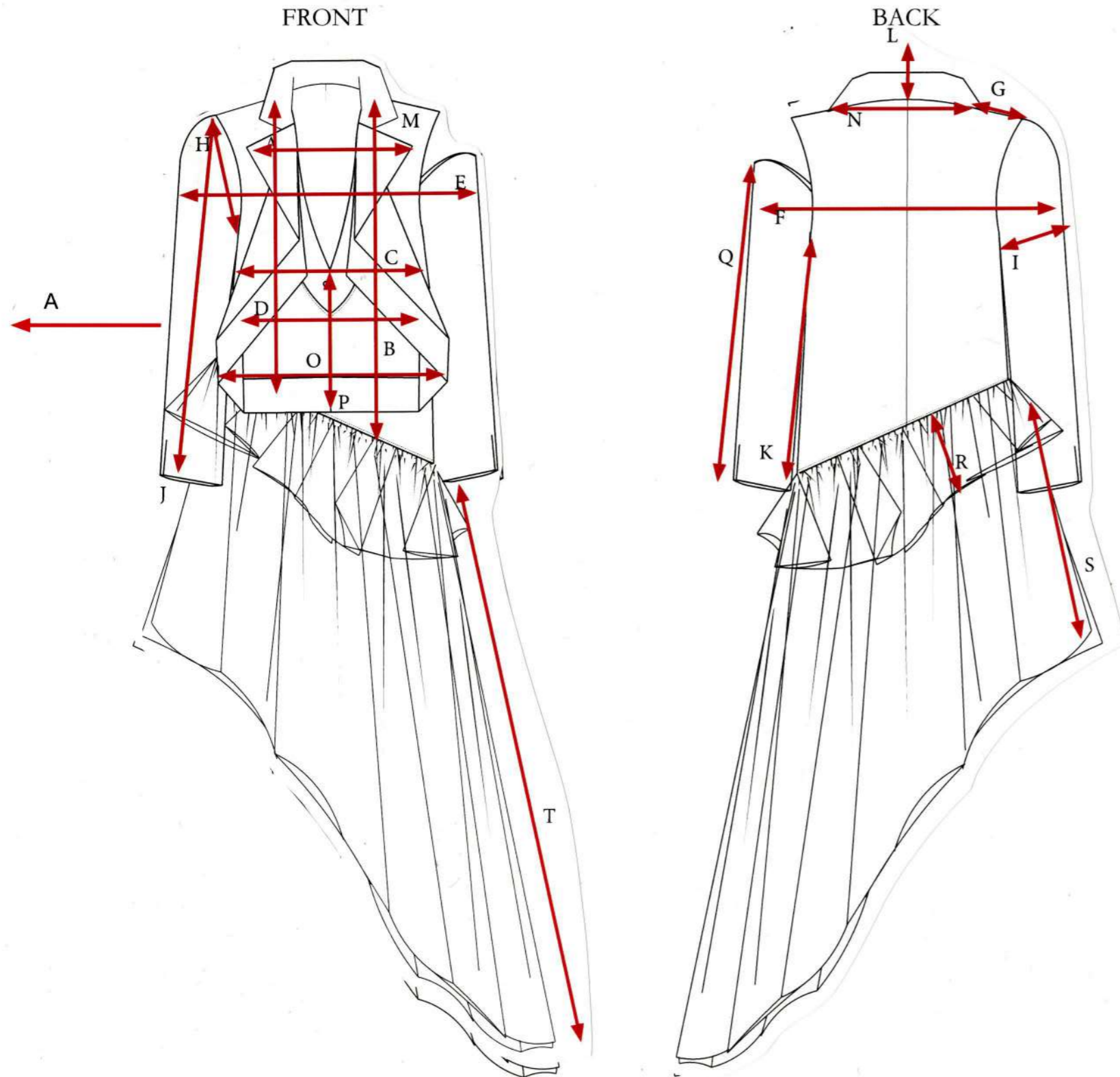
Date: 2024

Fabric composition - Silk and woll suiting blend and tulle

Project: Happy Hour

Block ref: Mens blazer

Front, Back and detail of garment



Measurements Taken Flat In Centimetres		M
A	Length from side neck point to hem - left	49cm
B	Length from side neck point to hem - right	64cm
C	Chest - 2.5cm below armhole	51cm
D	Waist - 39cm below side neck point	48.5 cm
E	Across front - 15cm from snp	58 cm
F	Across back - 15cm from snp	59 cm
G	Shoulder seam Length	12.5 cm
H	Armhole - straight	25.5cm
I	Bicep - 2.5cm from underarm	18 cm
J	Overarm - from crown to end cuff	68 cm
K	Underarm	50.5 cm
L	Collar depth at CB	7.5 cm
M	Rever from point to point	35 cm
N	Back neck width - inside edges	23 cm
O	Widest point to widest point of origami	42 cm
P	Center front chest to bottom of origami	22 cm
Q	Off the shoulder sleeve length	62 cm
R	Shorter tulle length	23 cm
S	Lenth of tulle - left	60 cm
T	Length of tulle - right	90 cm

TREND FORECASTING

Illuminating Brights

Why are they key? Evolving A/W's Ambient Brights, these high-octane brights have a digital feel and inspire high-impact energy. Seasonal key colour Electric Fuchsia inspires vitality with a rebellious edge.

How to use them: contrast these brights against black and Transformative Teal. Use pops of Jelly Mint, Blue Gleam and Vivid Yellow.



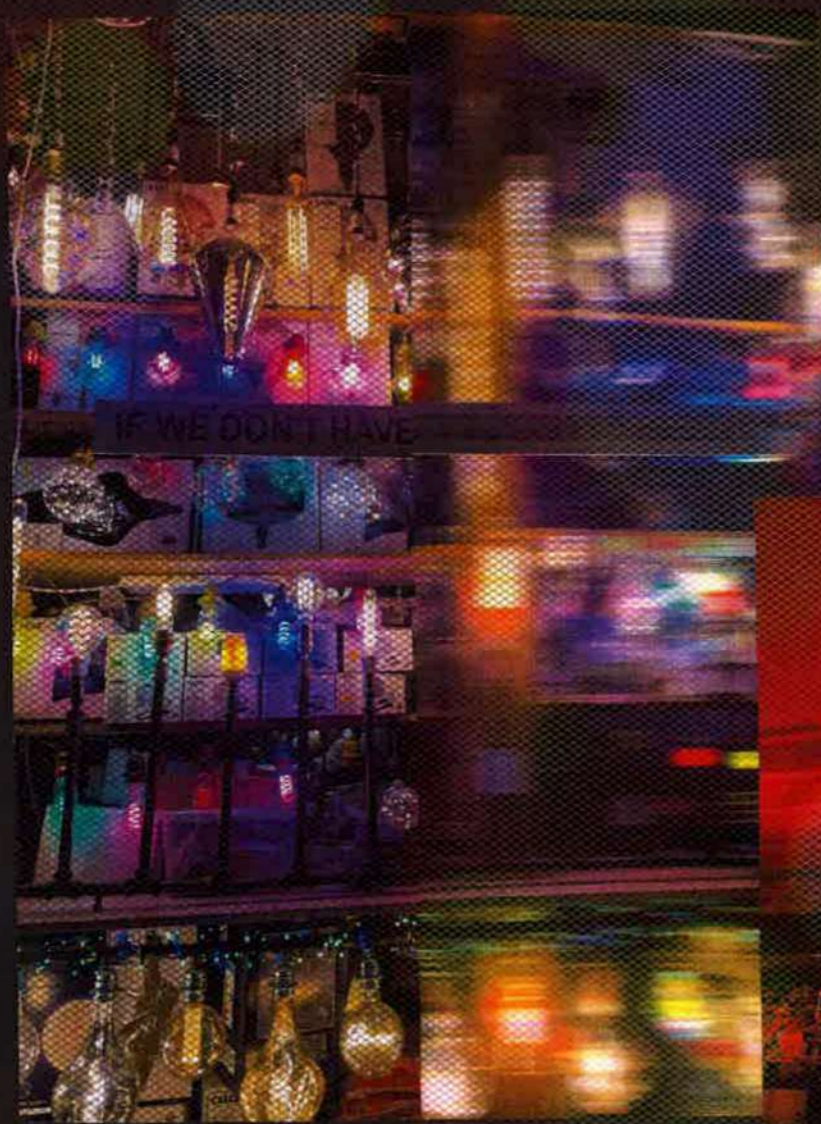
Twilight Darks

Why are they key? A shift towards Nocturnal Living and a need for focus and calm sees an evolution of A/W's Restorative darks into summer. In addition, purple hues resonate with a drive towards mysticism and meaningful practices.

How to use them: use coloured darks as an alternative to black. Combine purples with warm hues such as Cherry Lacquer, Robust Red and Thrift Pink.



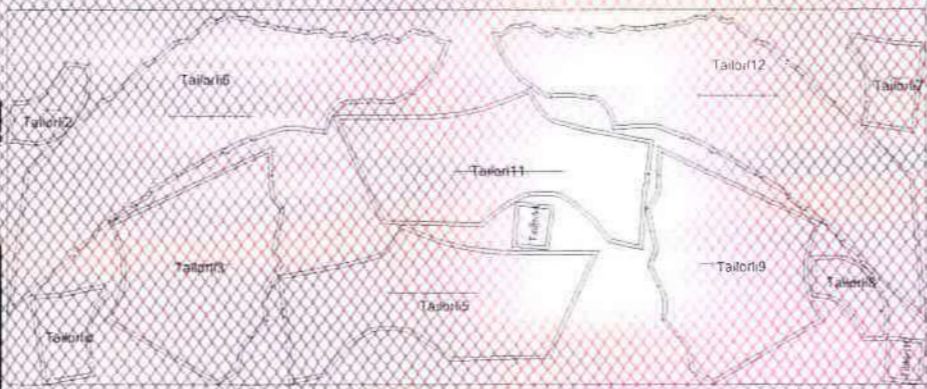
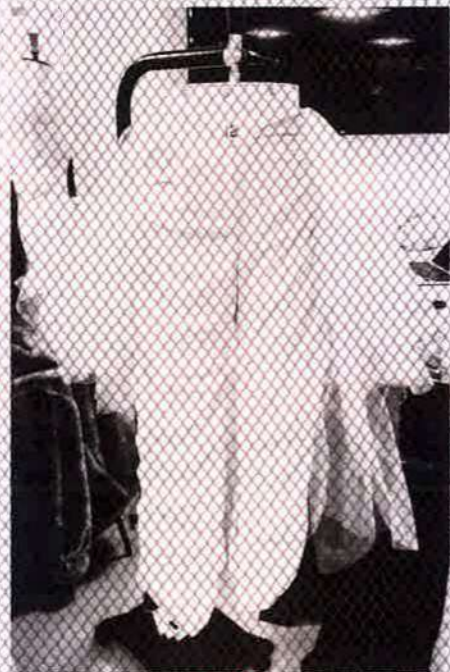
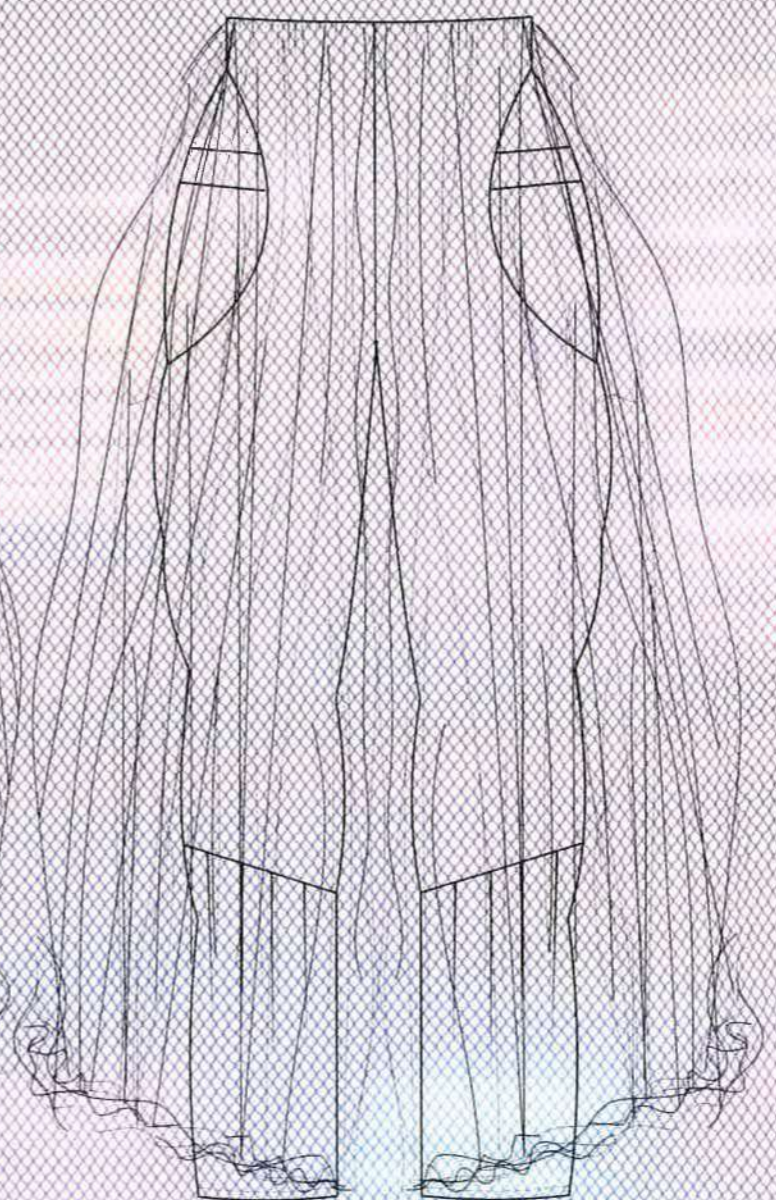
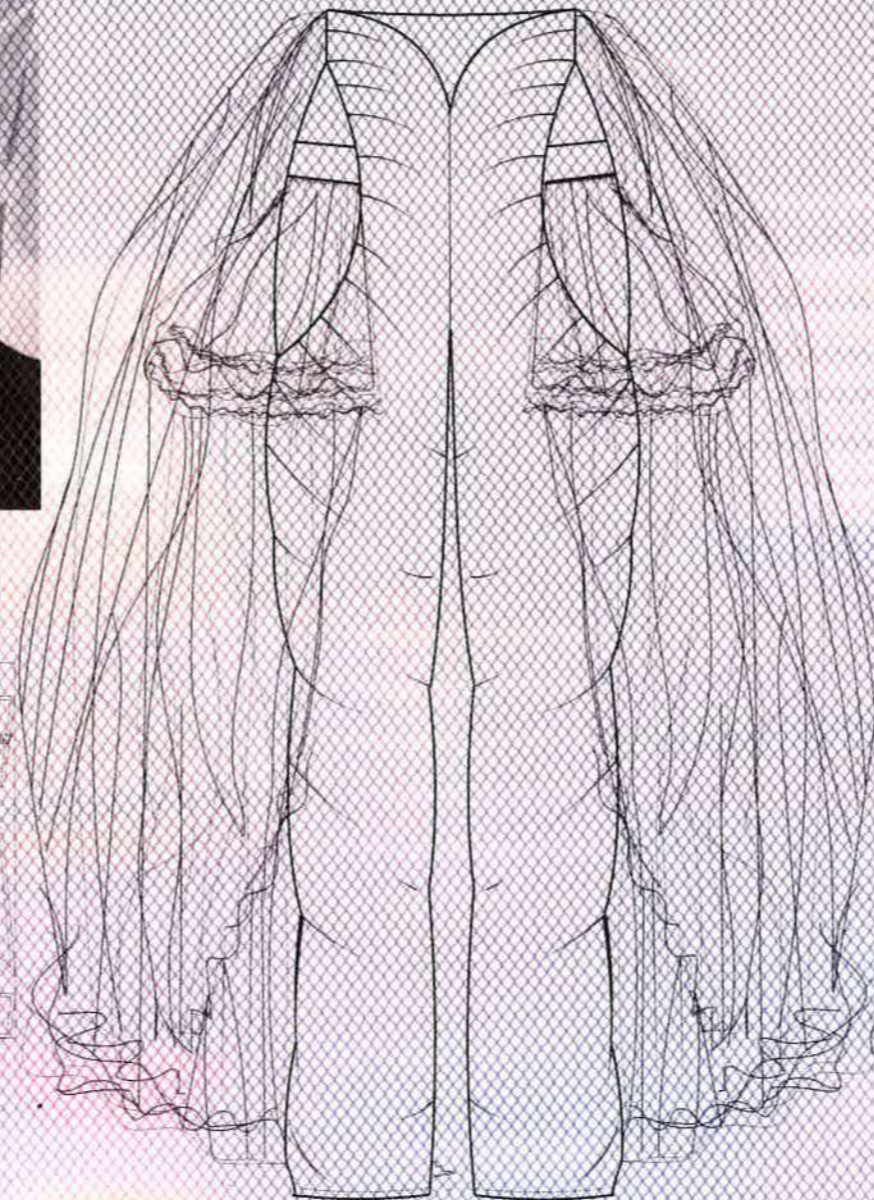
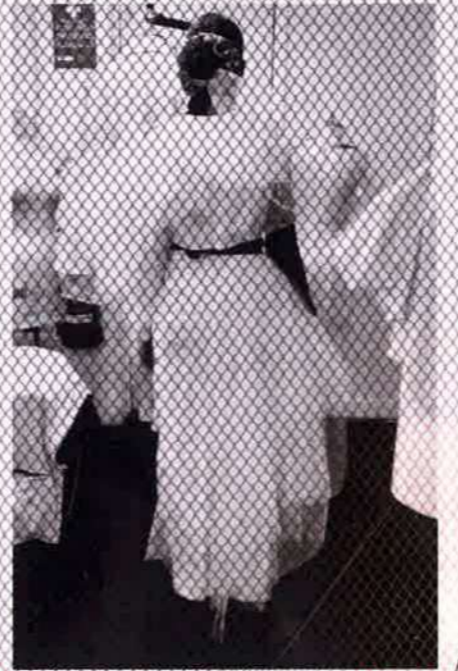
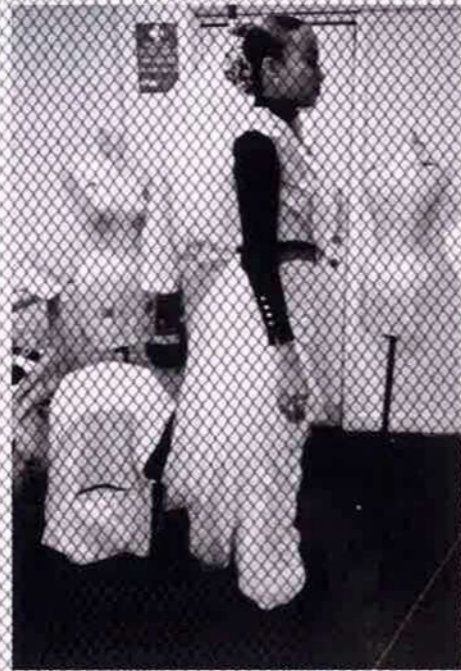
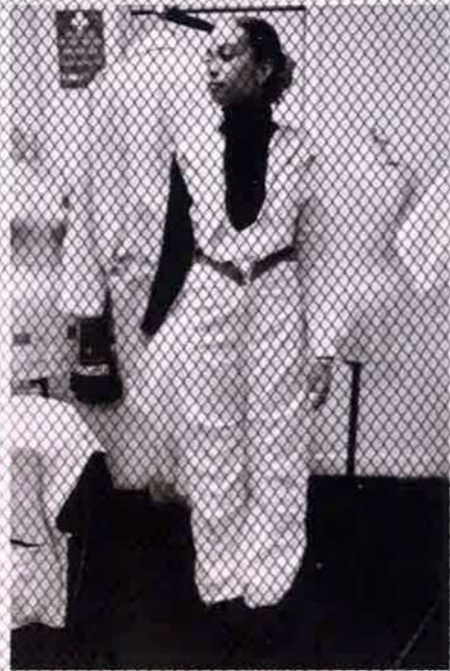
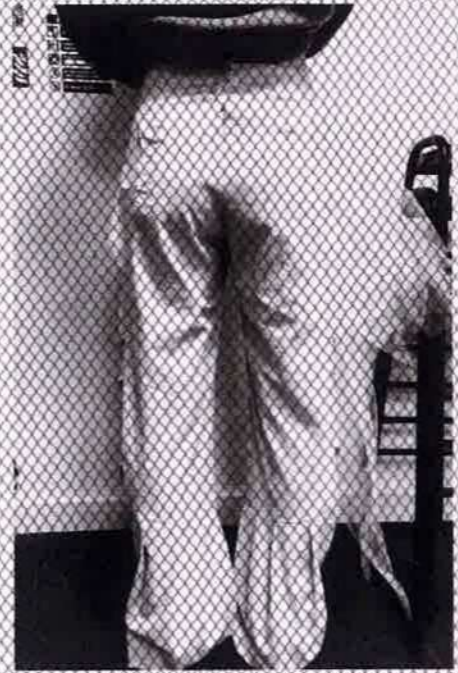
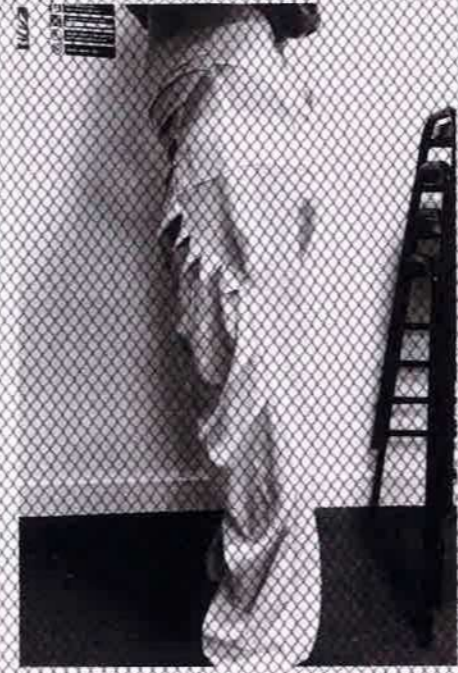
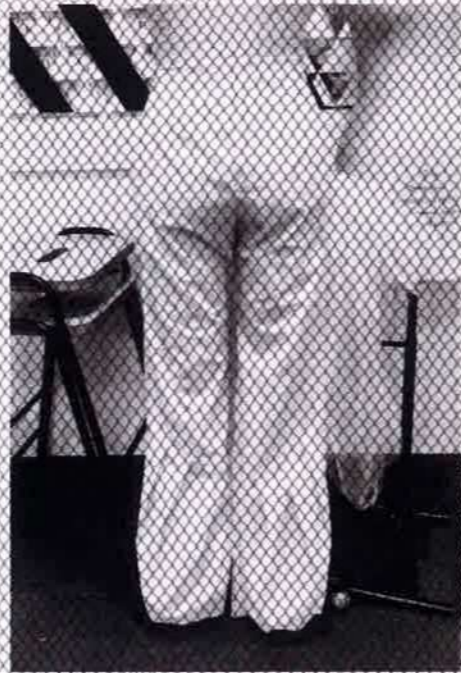
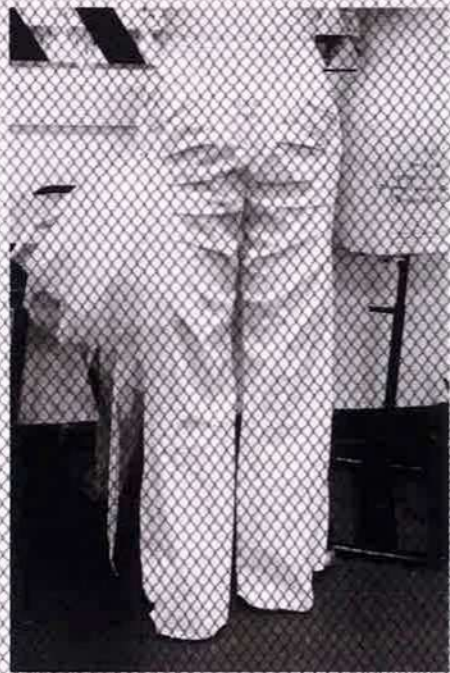
Using WGSN to aid research into colour trend forecasting, predicting 2026 summer to show a mixture of bright colours, Happy Hour uses this within the tulle fabrication, and the use of digital print, allowing depth to be added within the sheer fabric, creating an effect of the garments catching the light. My collection also juxtaposes with the trend forecast of twilight darks, creating a night time glow allowing darker colour palettes while also including colour.



DIGITAL PRINT PROCESS

I used pictures that I had taken in bars, of cocktails and nights out and then edited them to blur and distort the print.

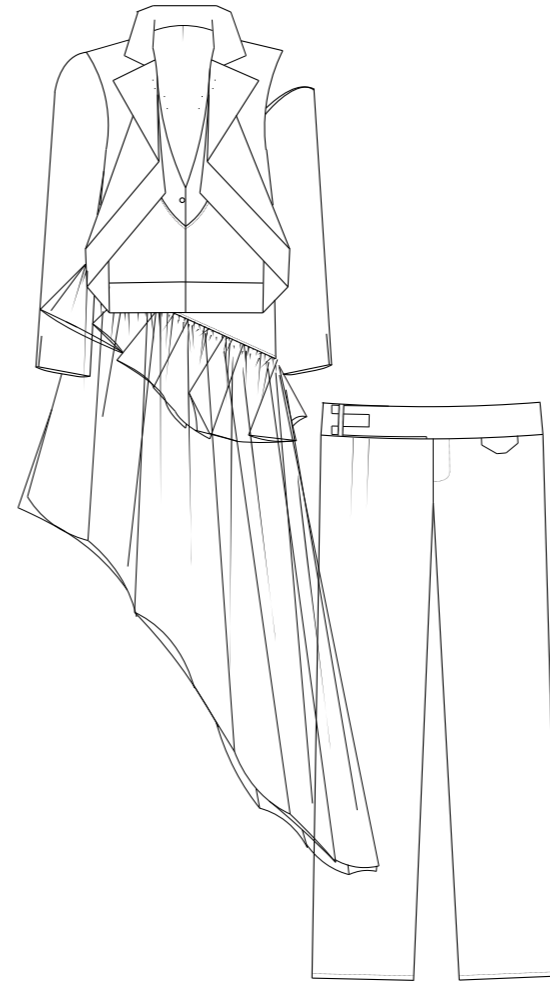
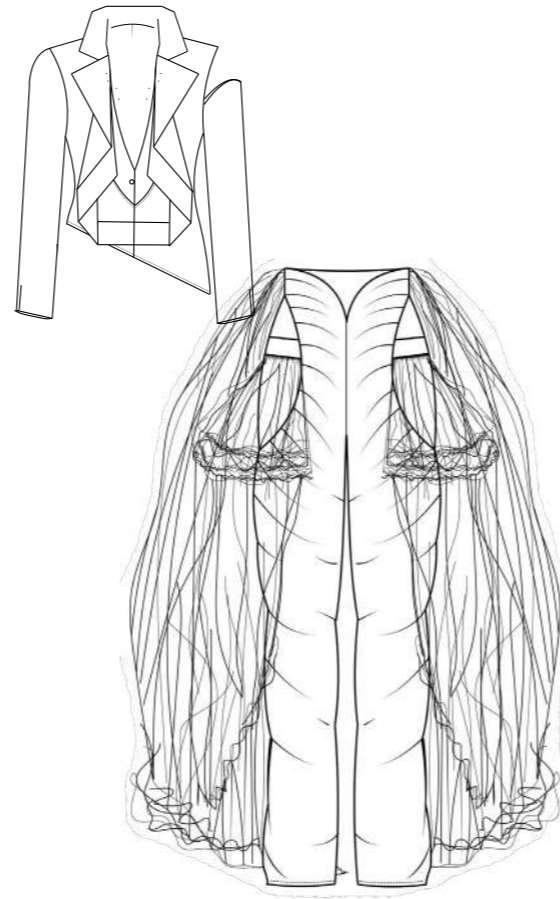
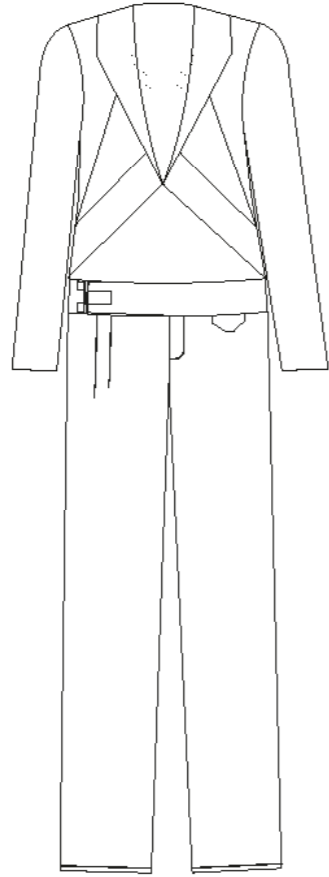
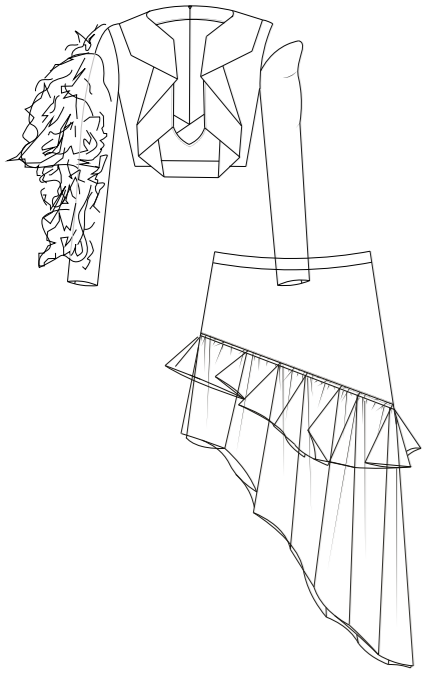




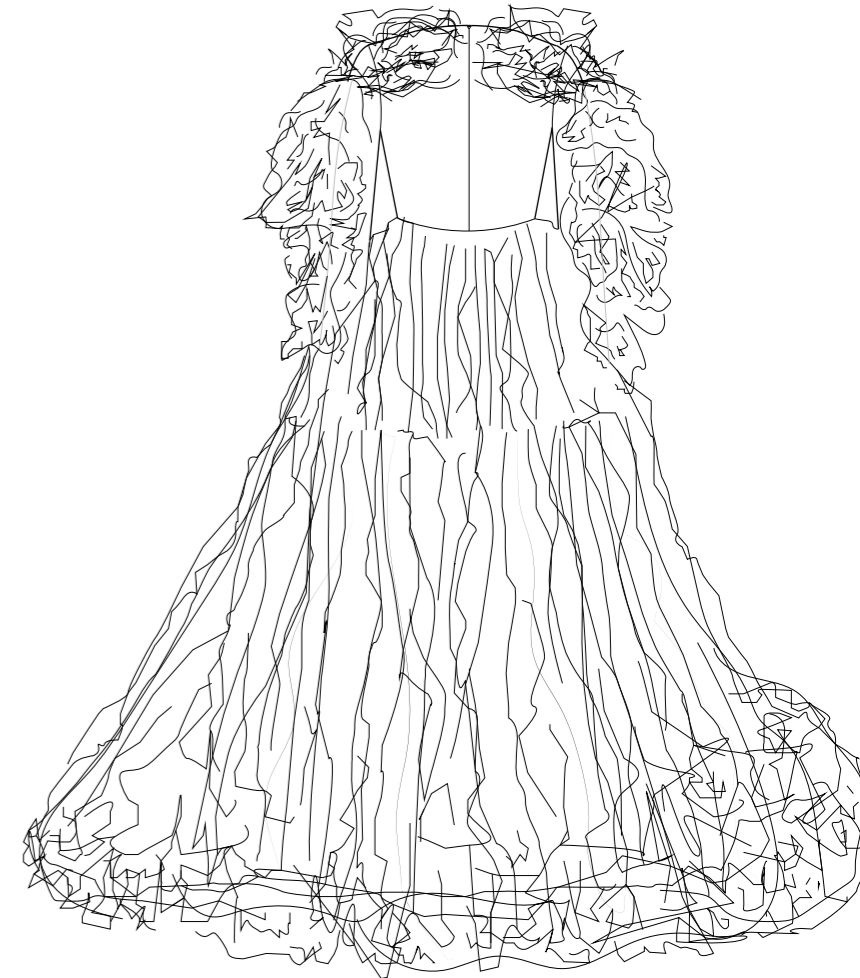
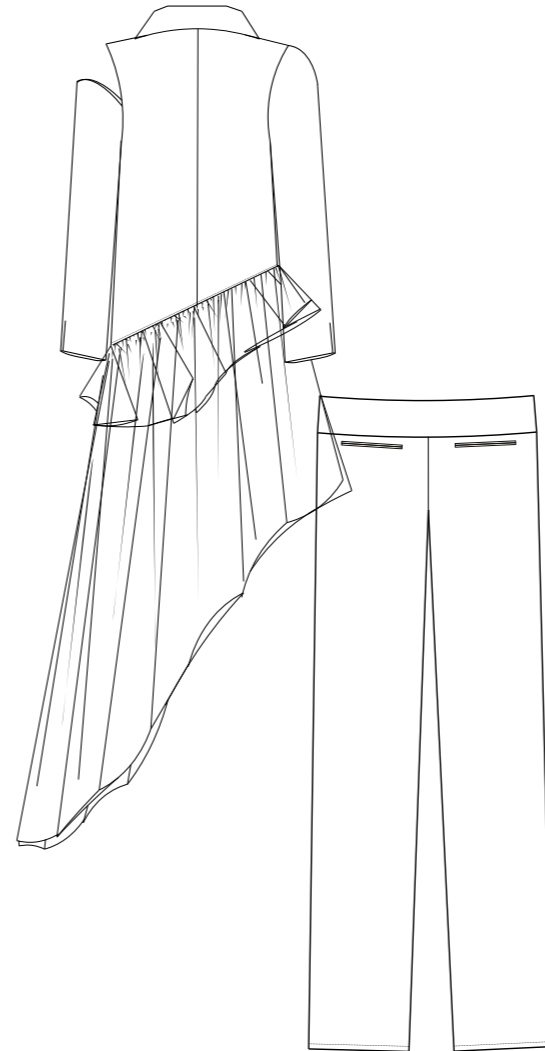
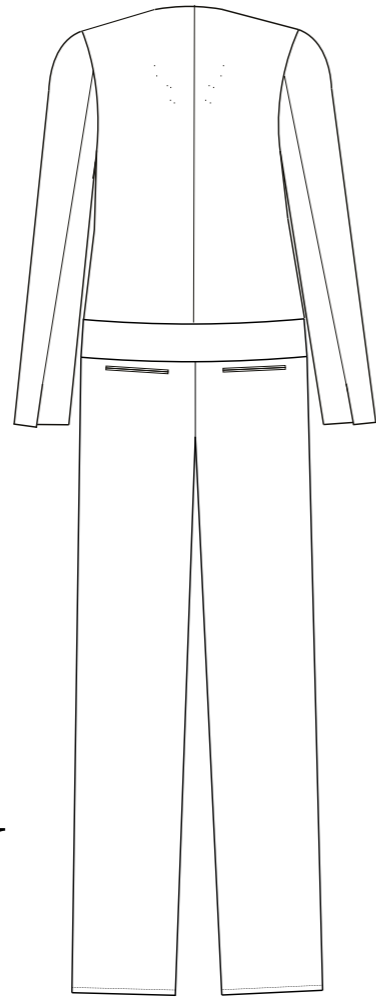
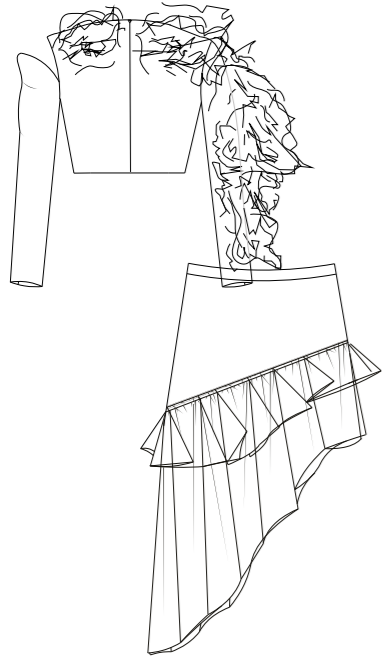
HAPPY HOUR LINE UP



FRONT



BACK



RANGE PLAN

Happy hour

