

Arts University Bournemouth
Instagram: nicolesingleton_design
Email: nicolesingleton03@gmail.com
Linkedin: www.linkedin.com/in/nicolesingleton-

Nicole Singleton 'Home Route'

'Home Route' is an Autumn/Winter menswear collection centring around my grandparents' contrastingly unique pastimes: My grandfather's Husky racing passions and my grandmother's love for patchwork quilting. Taking initial garment and hardware inspiration from protective, outer wear, worn by my grandfather and fellow husky racing athletes. The print and textile story of my collection evokes a feeling of 'home comfort' and warmth after returning from a harsh mountainous terrain, using intricate quilting techniques and knitwear. With the utilization of oversized puffer sleeves and soft fabrication, the garments achieve the feeling of being wrapped up in a hand-crafted quilt.

A key pattern cutting focus for this collection is creating articulations which are tailored to the body to ensure maximum practicality. I achieved this using S-bend pattern cutting on the trouser legs and puffer coat arms, also using articulated knee pads and shoulder pads. I have developed these knee pads using my grandfather's racing maps as a lay plan, resulting in an organic shape which is both unique and practical. These garments have an element of both functionality and comfort. Maintaining a practical fit as well as elevated design was essential for me, to honour my initial concept and the high functioning





Concept

Looking through home photographs of my grandfather

Market Research

Designer: Moncler A/W25



Designer: Aitor Throup



Collage Design Development



Initial designs came from the method of draping and collaging with preexisting outerwear garments, sleeping bags, knit samples and husky racing equipment.

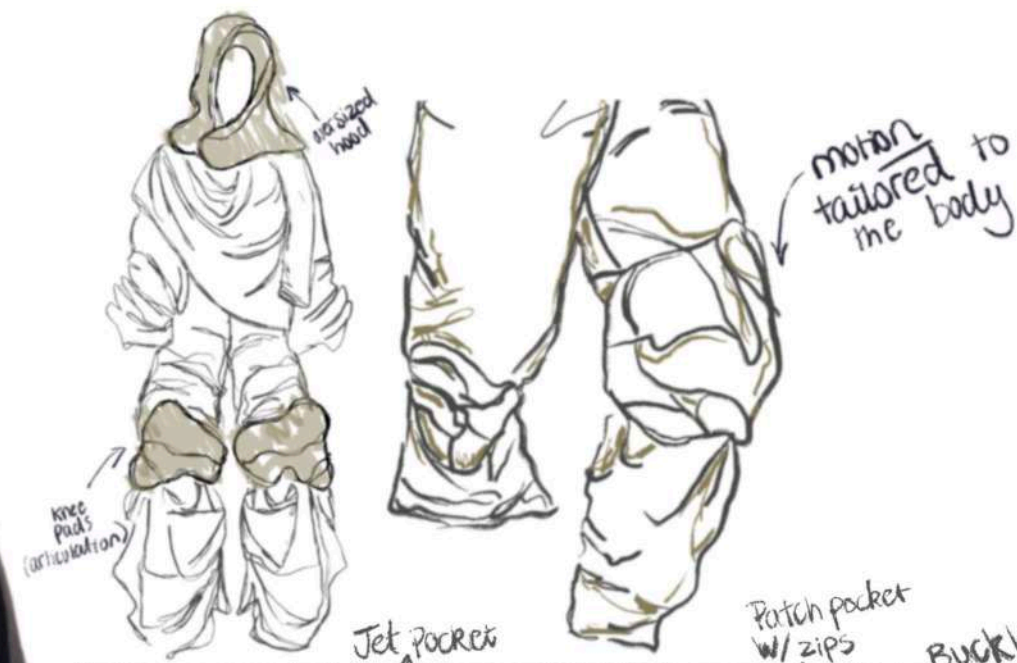
Bomber Sleeve Development



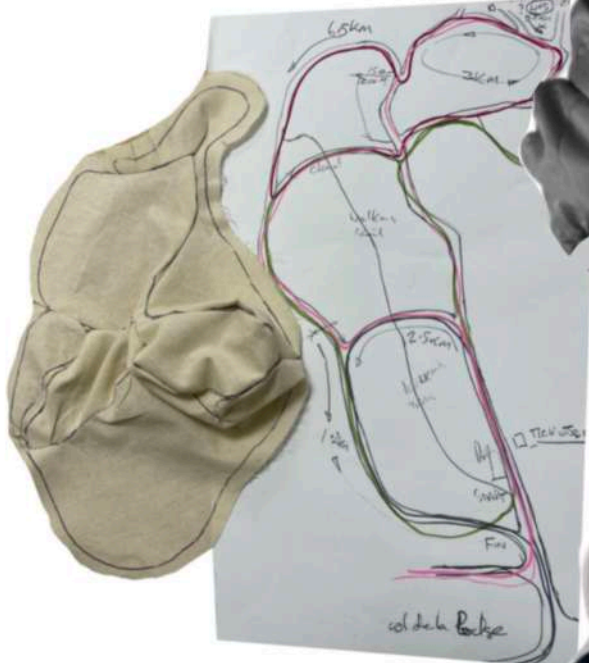
Bomber Jacket

Knee Pad Trouser Development

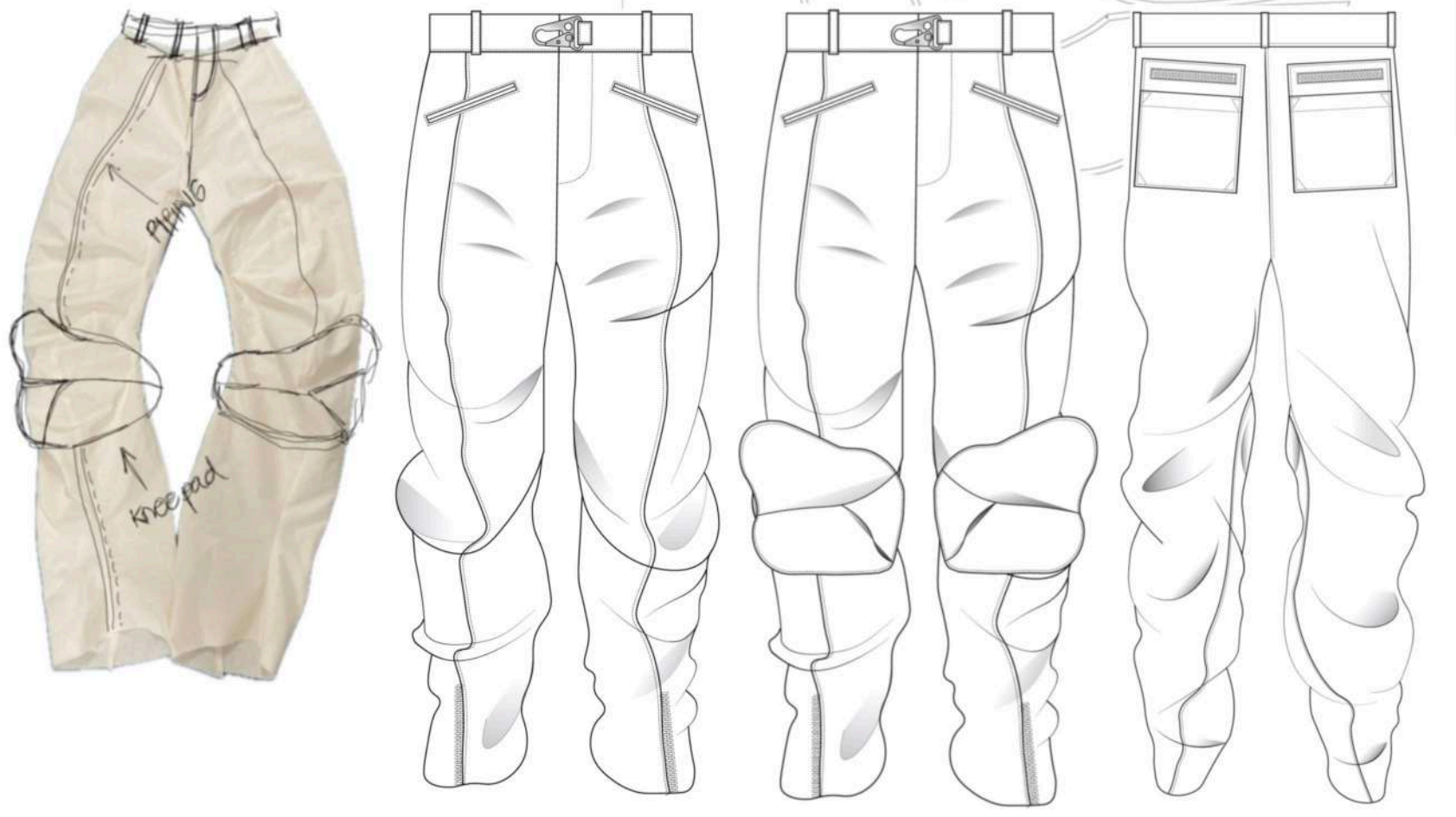
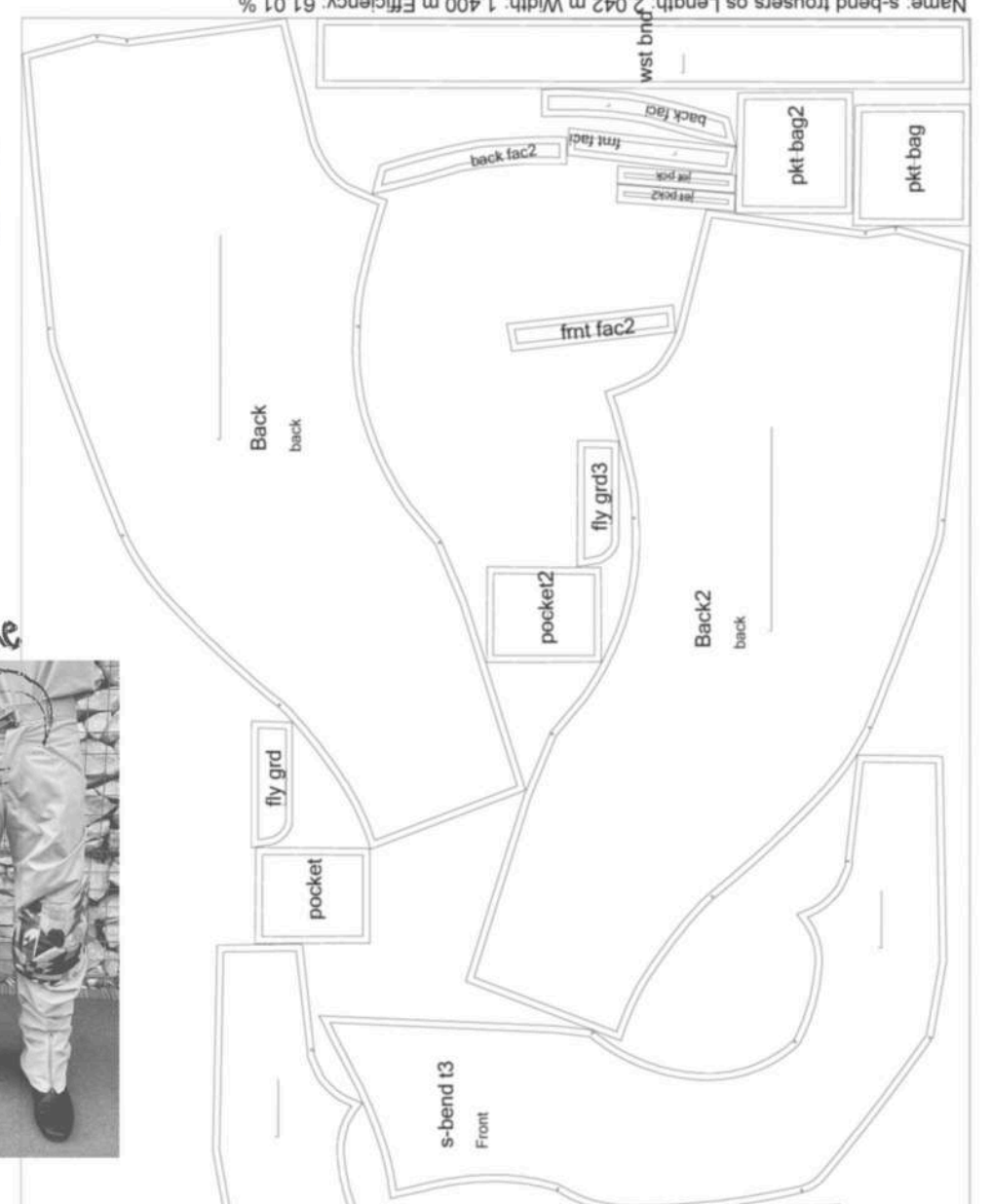
Name: s-bend trousers os Length: 2,042 m Width: 1,400 m Efficiency: 61,01 %

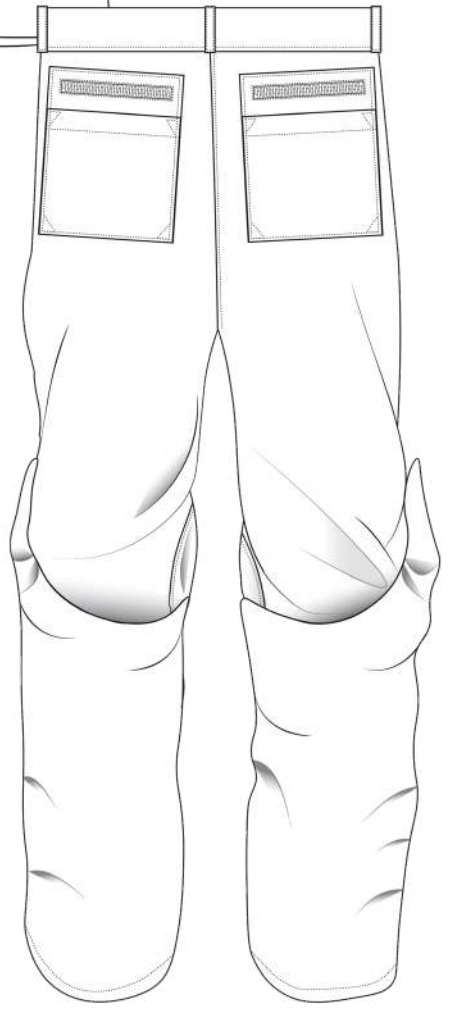
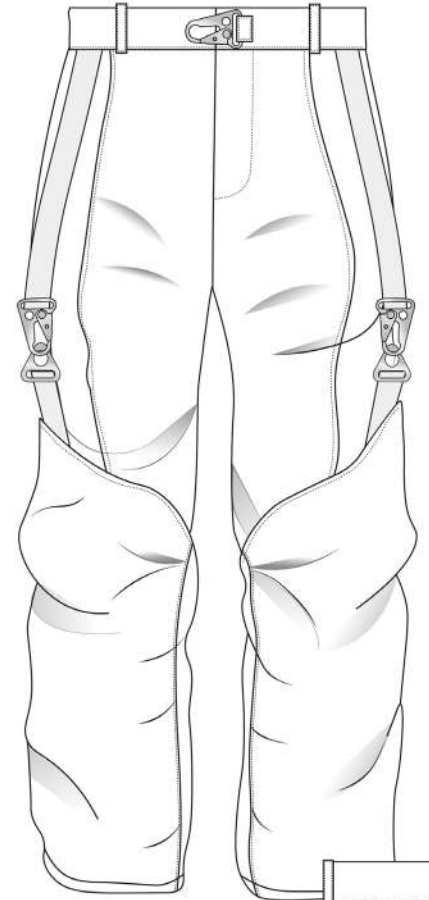
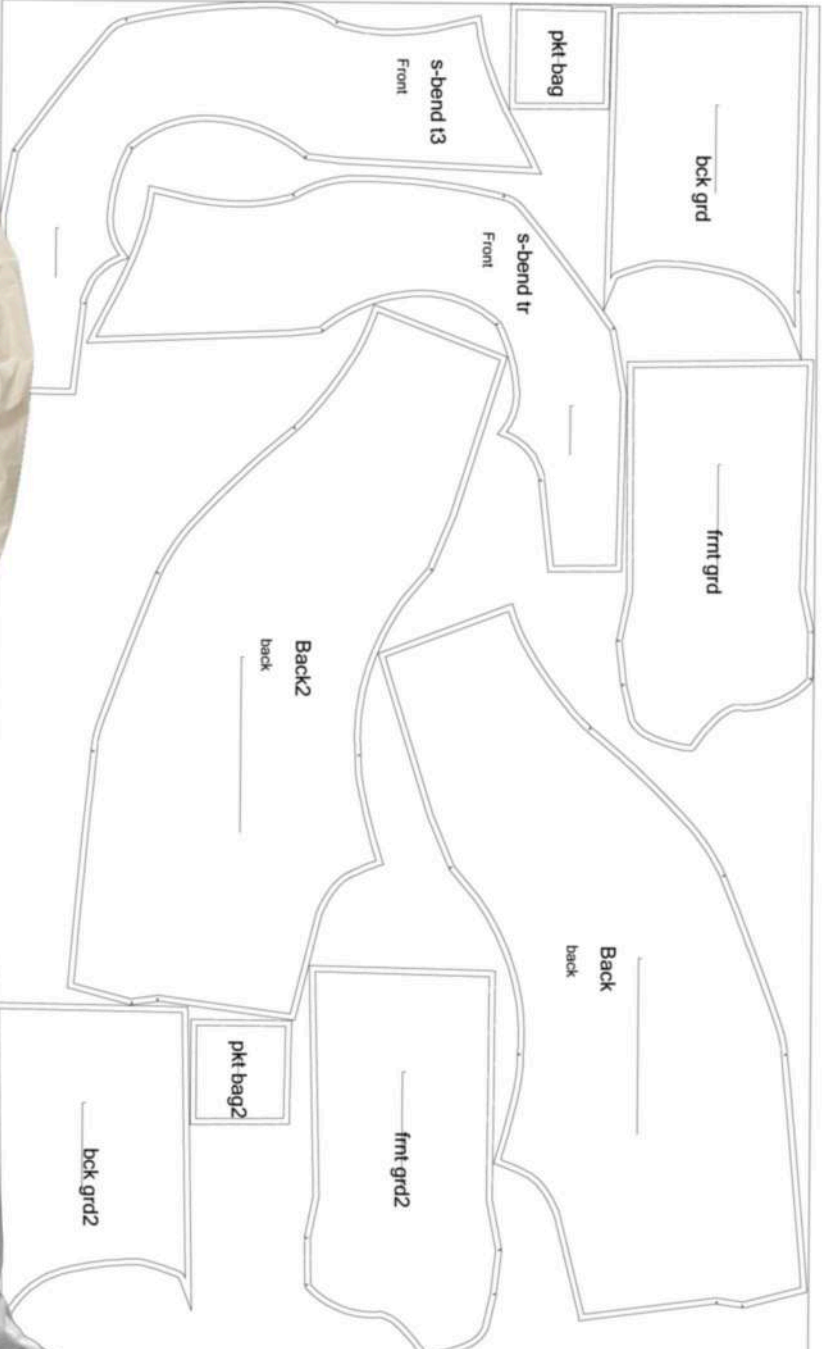
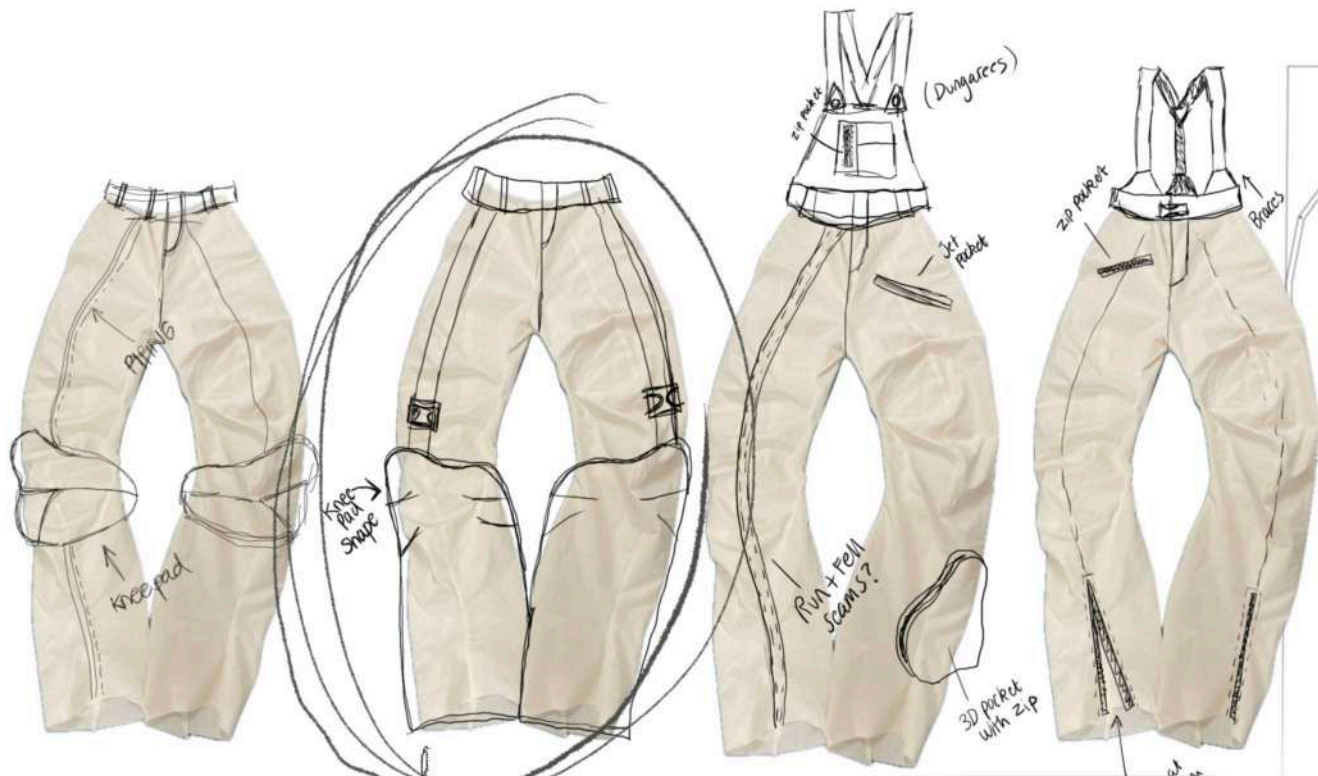


grandad's maps

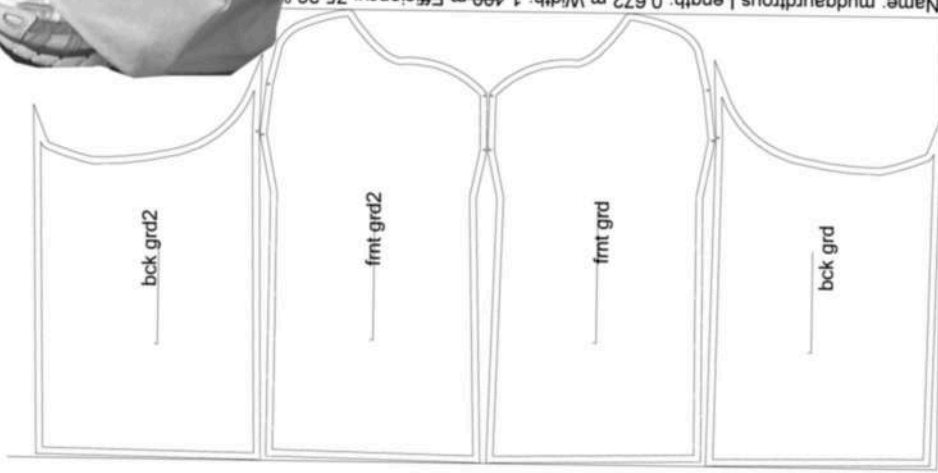


Using My Grandad's hand written maps as a starting point for my design collage





Mud-Guard Trouser Development



Name: mudgaudtrous Length: 0.672 m Width: 1.409 m Efficiency: 75.26 %

Colour Development

Tactile mid-tones

Why are they key? Tactility will be a driving force in A/W 25/26, as consumers connect to enriched physical experiences. A rustic spirit will inspire colours and surface textures that invite touch.

How to use them: anchor your palette around earthy mid-tones, layer in next neutrals and apply to #Workwear. Play with warm and cool contrasts, mixing indigo blues with Rustic Caramel and Sunbaked. Add patina and #SubtleTexture using regenerative fibres, RWS-certified wools, vegetal tan leather and heavy twill denim.

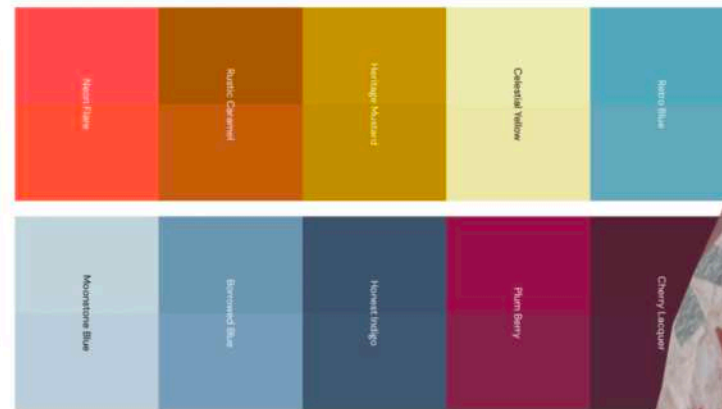


Coloro - A: 028-43-27, B: 030-69-10, C: 113-58-13, D: 103-45-01, E: 120-35-11, F: 025-56-18, G: 050-40-14
 Pantone - A: 18-1163 TCX, B: 14-1208 TCX, C: 16-4118 TCX, D: 18-4214 TCX, E: 19-3929 TCX, F: 16-1336 TCX, G: 18-0529 TCX

Seasonal colour

A/W 25/26

The palette is a mix of tinted pastels, earthy mid-tones, kitsch brights and restorative darks. Four of our five key colours Neon Flare, Celestial Yellow, Retro Blue and Cherry Lacquer are present here. Blue is the dominant colour in this palette, and the majority are honest tones which feel preloved and nostalgic. Rustic Caramel and Heritage Mustard are two classic autumnal colours which complement the pastels and saturated darks.



me + my grandma

Print and Textile Development



Scan for print Process

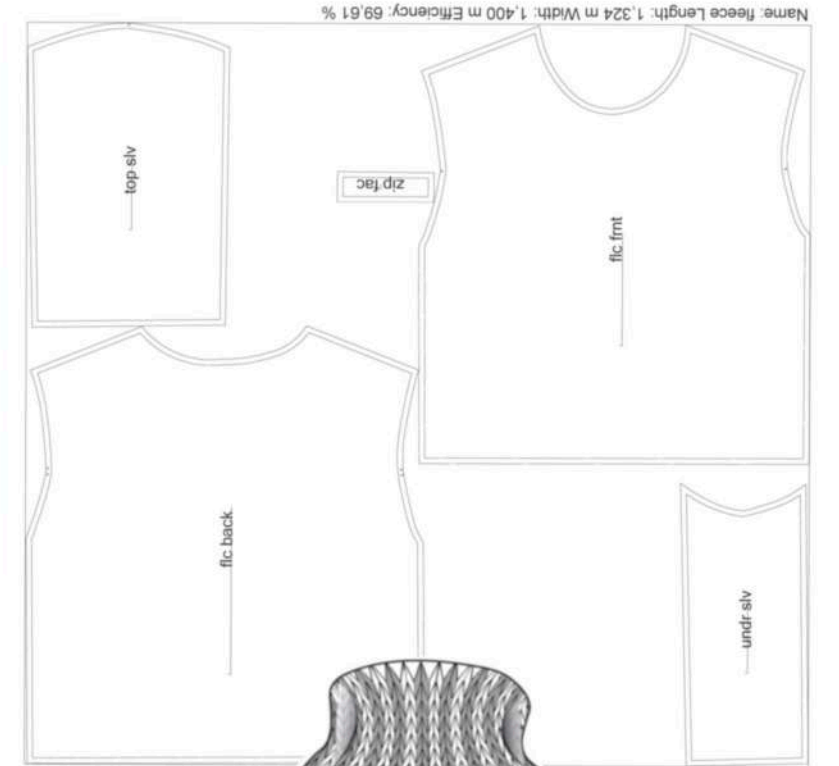


↳ Clo 3D scale + placement

Scan for Knit Process



Knit Development

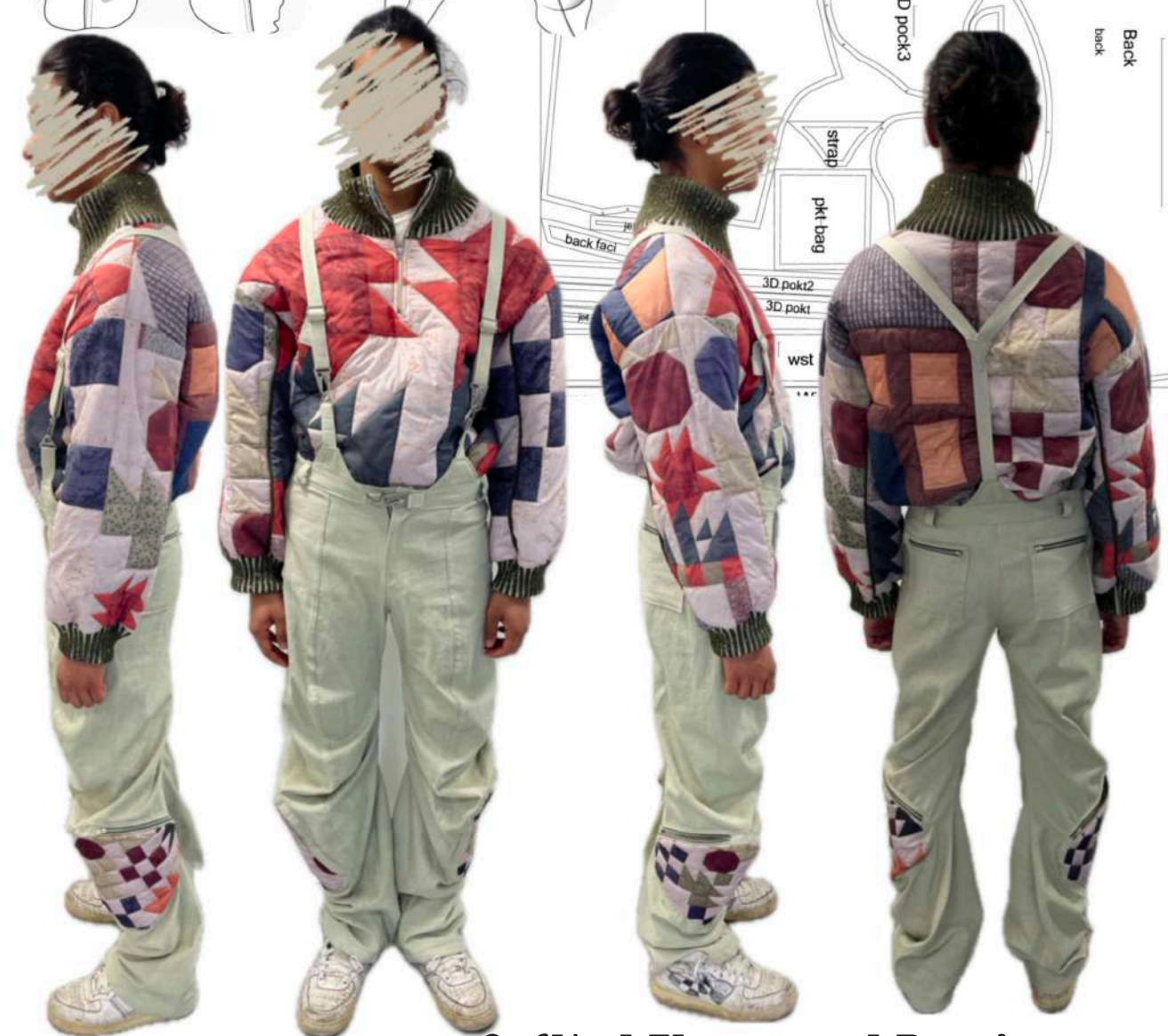
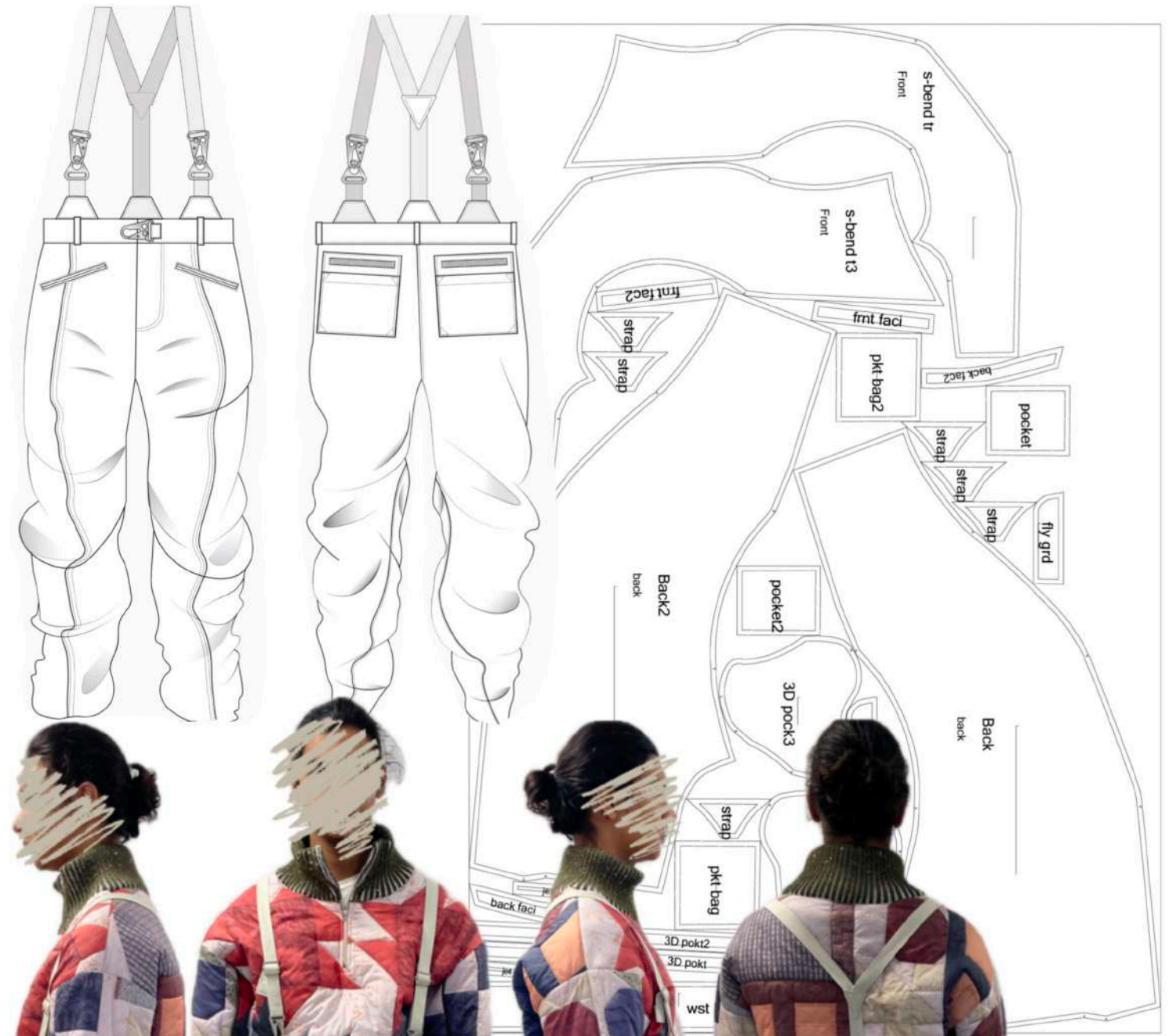


Designing punch cards inspired by my grandma's quilt.



Knit Jumper

Shorts and Leg Warmers



Quilted Fleece and Dungarees

Home Route: Line Up



Nicole Singleton
Arts University Bournemouth



Range Plan

