



By Olivia Eden

//MARIKA
INTERGENERATIONAL CRAFT AND
CONTEMPORARY TEXTILE INNOVATION

//OLIVIA EDEN//
ARTS UNIVERSITY BOURNEMOUTH
FASHION (BA) - WOMENSWEAR

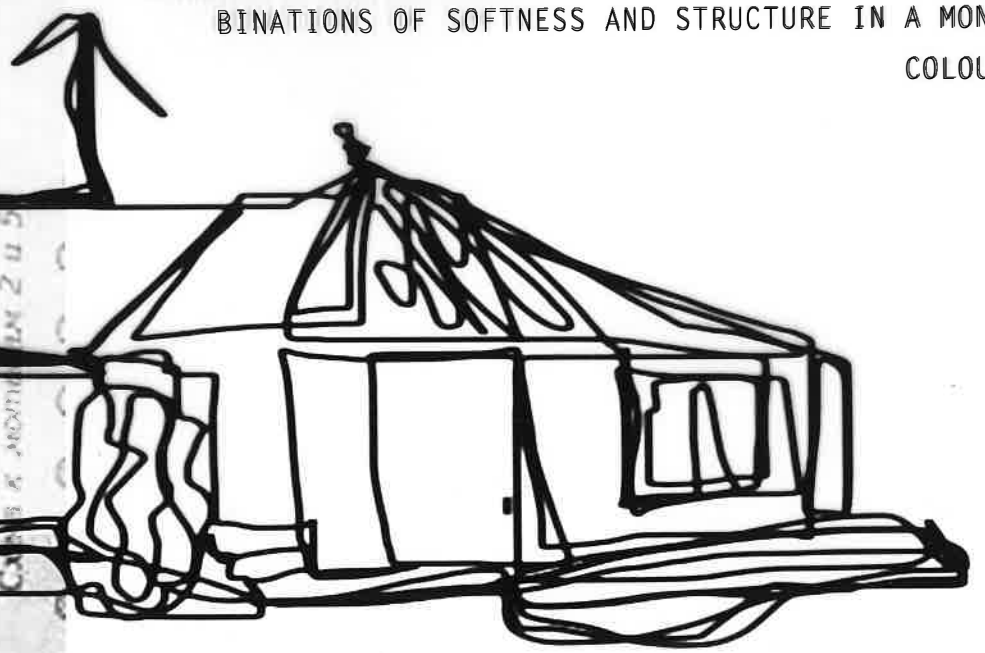
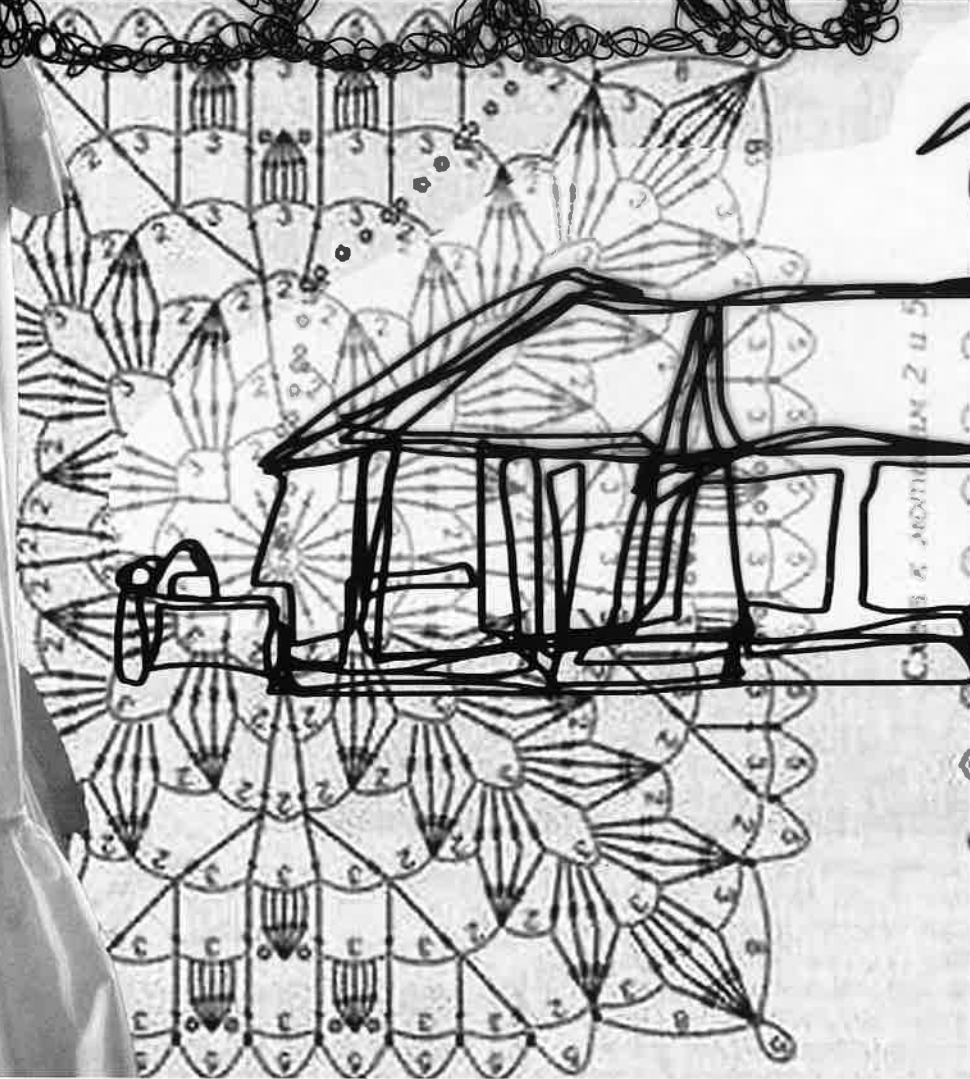
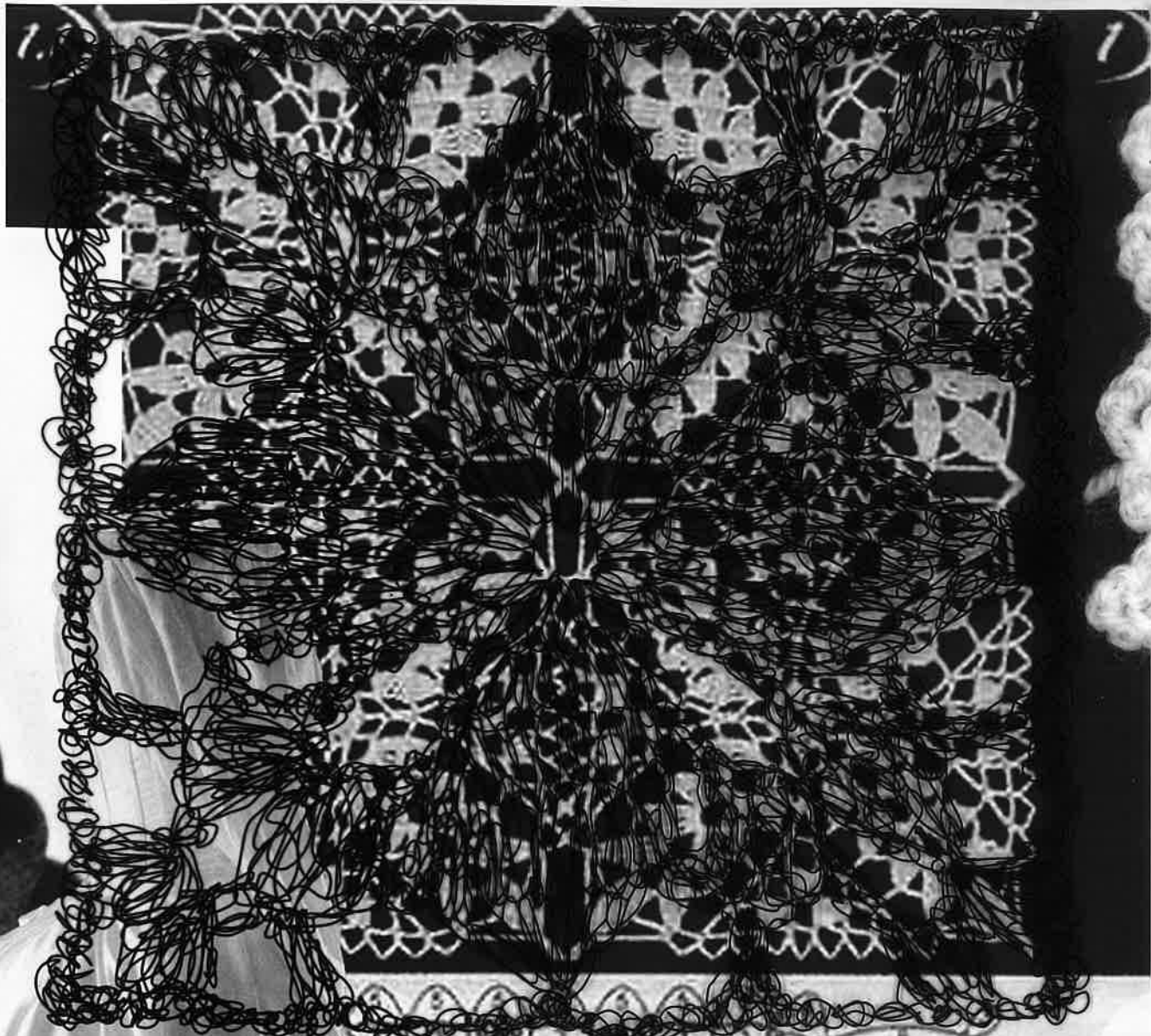
@LIVIDFASHIONN
OLIVIAGRACEEDEN@HOTMAIL.CO.UK
07507567210

//MARIKA

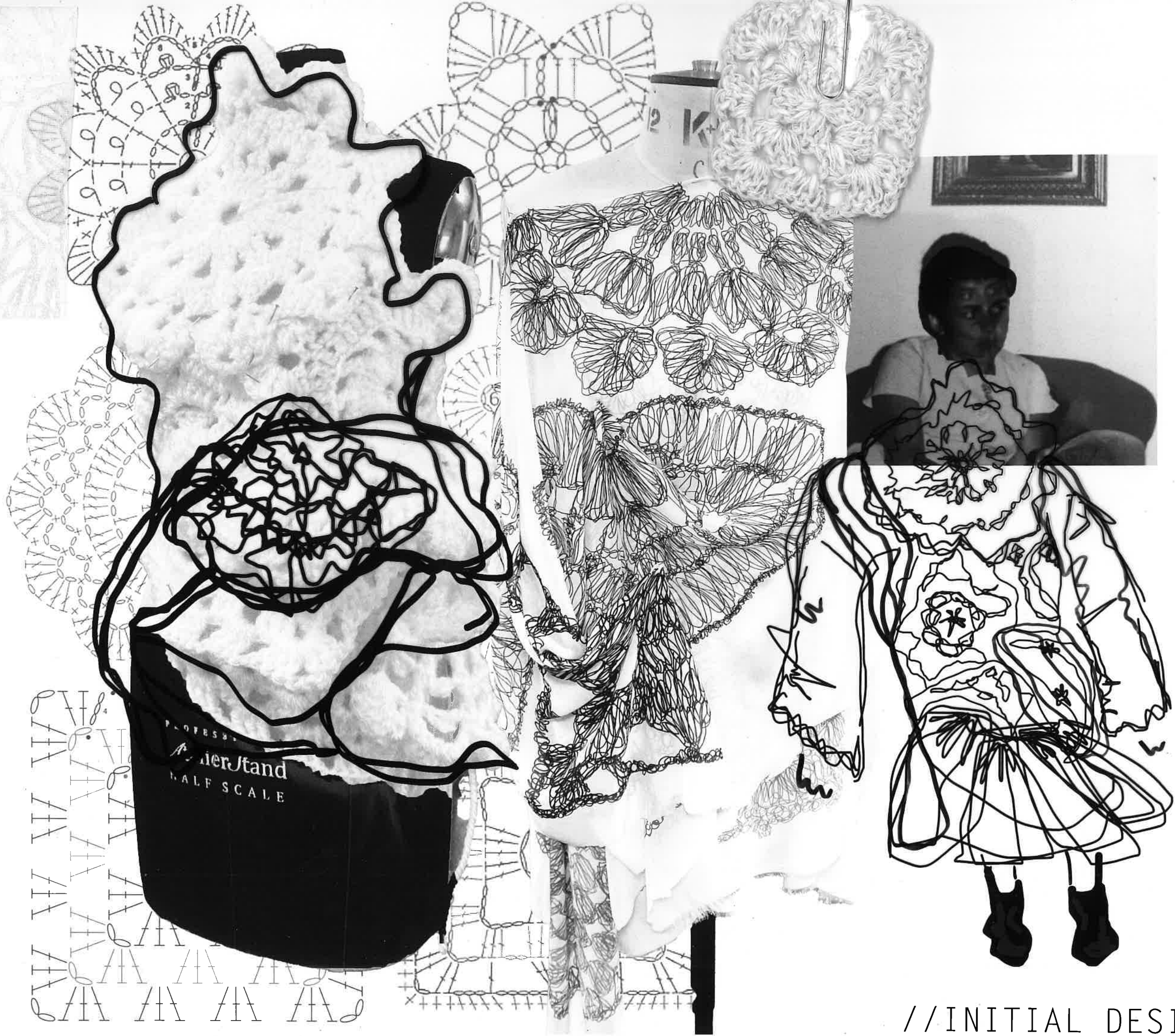
BA FASHION - FMP GRADUATE COLLECTION
SPRING//SUMMER 2025

WITH PAST COLLECTIONS CELEBRATING KNITWEAR AND FEMININE SILHOUETTES; MARIKA IS A WOMENSWEAR COLLECTION INSPIRED BY THE TRADITIONAL DRESS OF VICTORIAN CLOTHING AND THE IDEOLOGY OF MEMORY HOUSING. REINTERPRETTING MY GRANDMOTHERS LOVE FOR CROCHET AND HOME CRAFT WITH INNOVATIVE TEXTILES AND A CONTEMPORARY ROMANTIC EDGE. DIAPHANOUS DRESSES AND FULL, FLOWING RUFFLES IS IMBUED WITH A SENSE OF LIGHTNESS.

WITH HER SPIRIT AS MY MOTIVATION, I INTEGRATE CONVENTIONAL CROCHET STYLES AND STITCHING TECHNIQUES WITH INNOVATIVE FABRIC PRINTING METHODS. USING THE BUSTLE AND OTHER CUSTOMARY ATTIRE FROM THE ROMANTIC PERIOD TO ADVANCE PRESENT DAY STYLES. IN RELATION TO HOME AND THE COMFORT OF MEMORY PRESERVATION, THIS SPRING/ SUMMER COLLECTION DEVELOPS A REALISATION OF A SERIES OF GARMENTS, EACH PIECE BRINGING FORWARD A CONTEMPORARY TAKE ON FEMININITY. UNEXPECTED COMBINATIONS OF SOFTNESS AND STRUCTURE IN A MONOCHROMATIC COLOUR PALETTE.

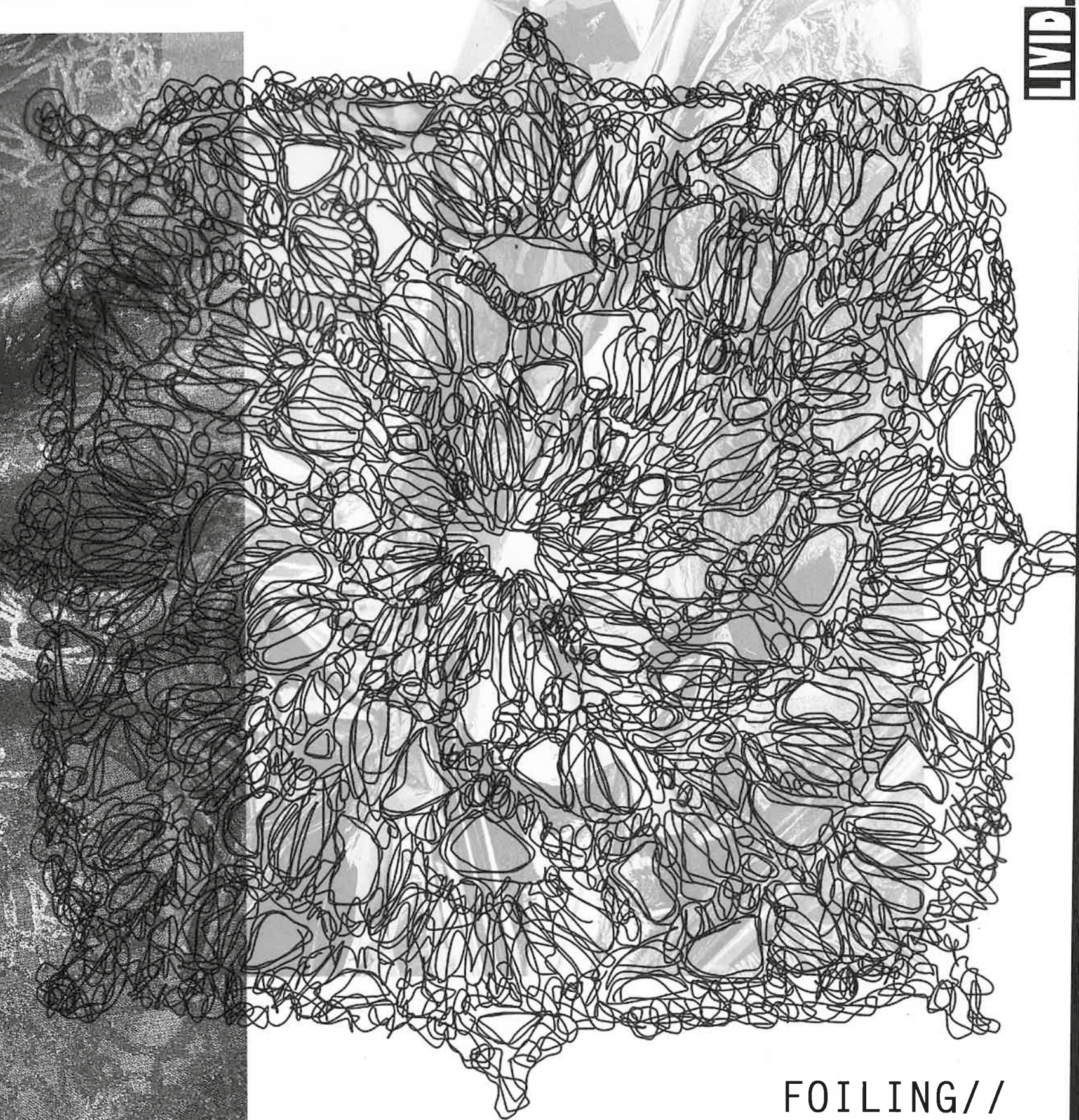
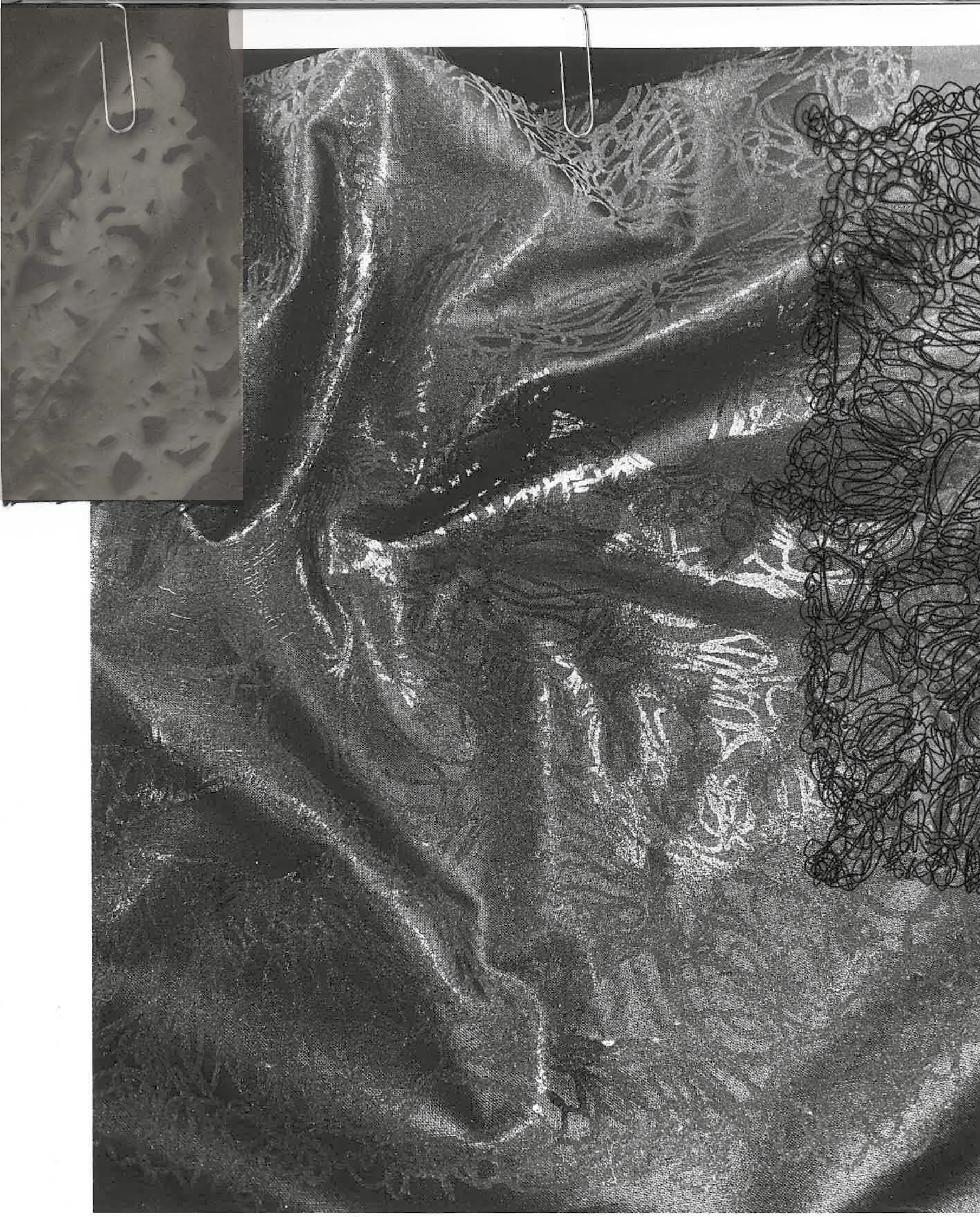


//CONCEPT//



PROFESSOR
Aier Stand
HALF SCALE

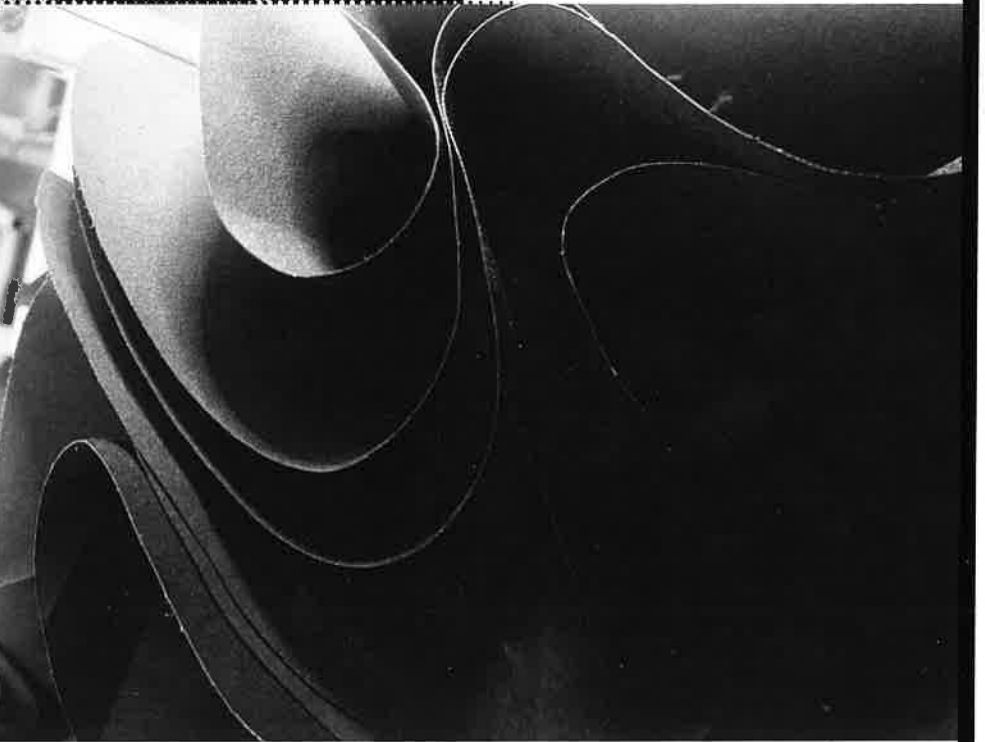
//INITIAL DESIGN//



FOILING//

- TEXTILE EXPERIMENTS WITH SCREEN-
PRINTING TECHNIQUES AND FOILING
-LOOK 3 TOP

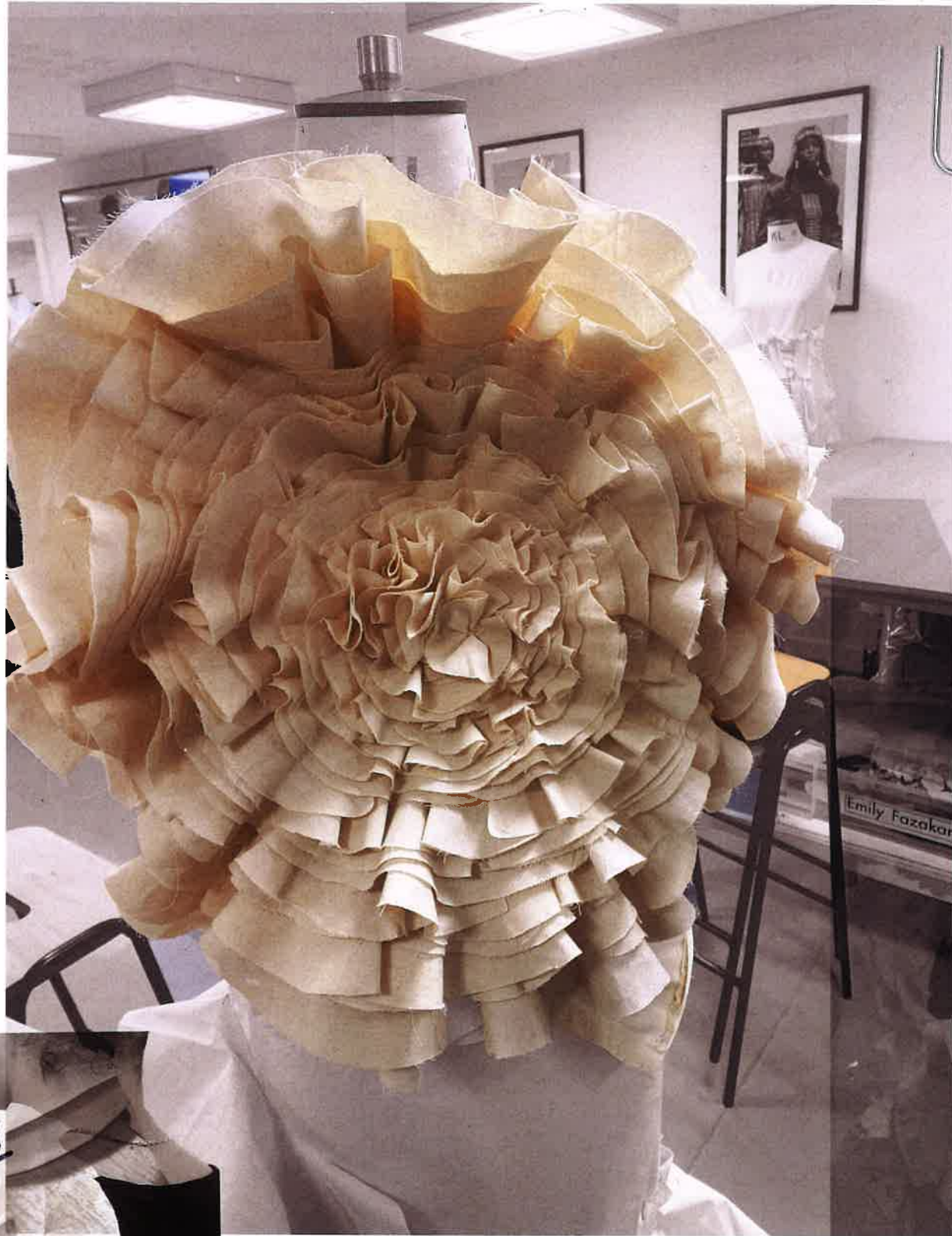
//TEXTILE DEVELOPMENT//



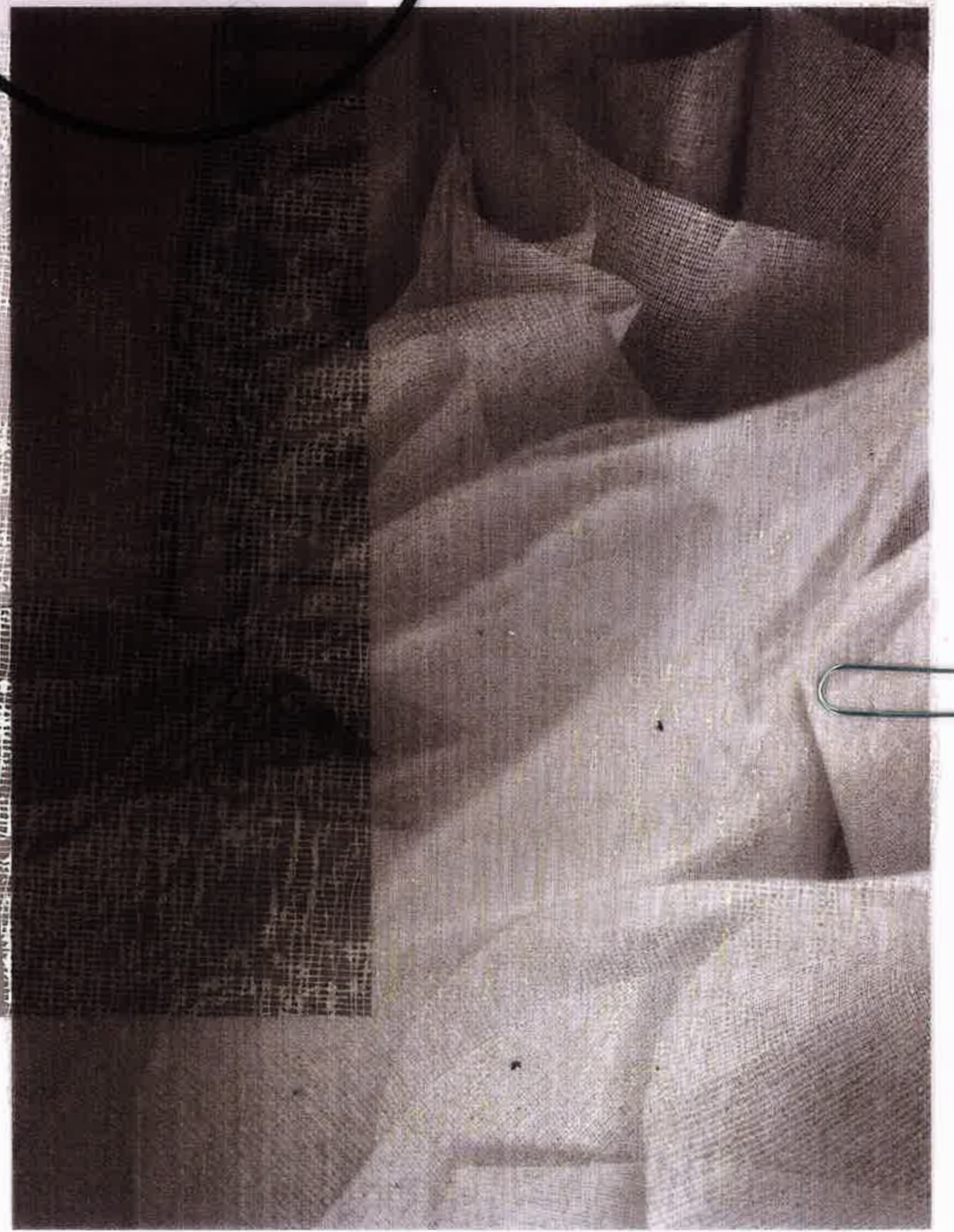
- USING OYSTERING TECHNIQUE TO
CREATE VOLUME - LAYERING
CIRCLES AND TOP STITCHING ON
THEIR BIAS



- DEVELOPING A CONTEMPORARY CONSUMER FROM PRIMARY RESEARCH



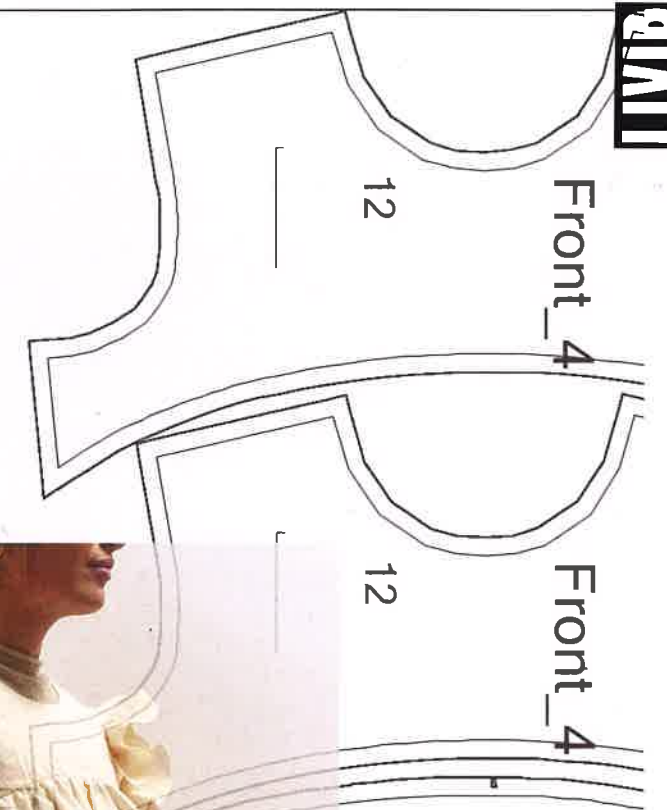
//DRAPE PROGRESS AND ALTERING//



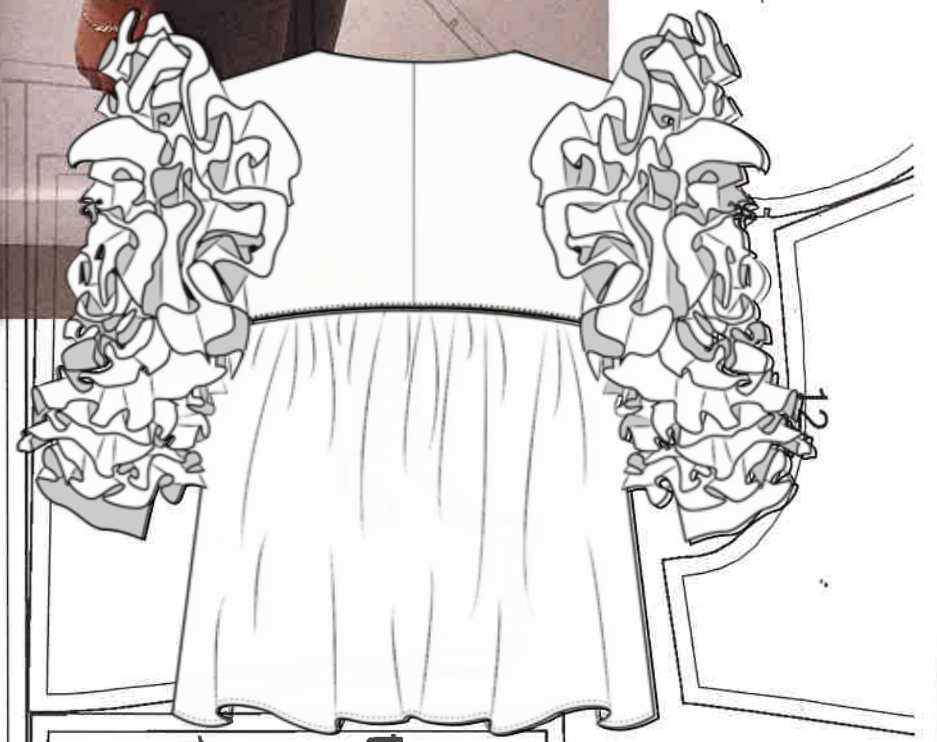
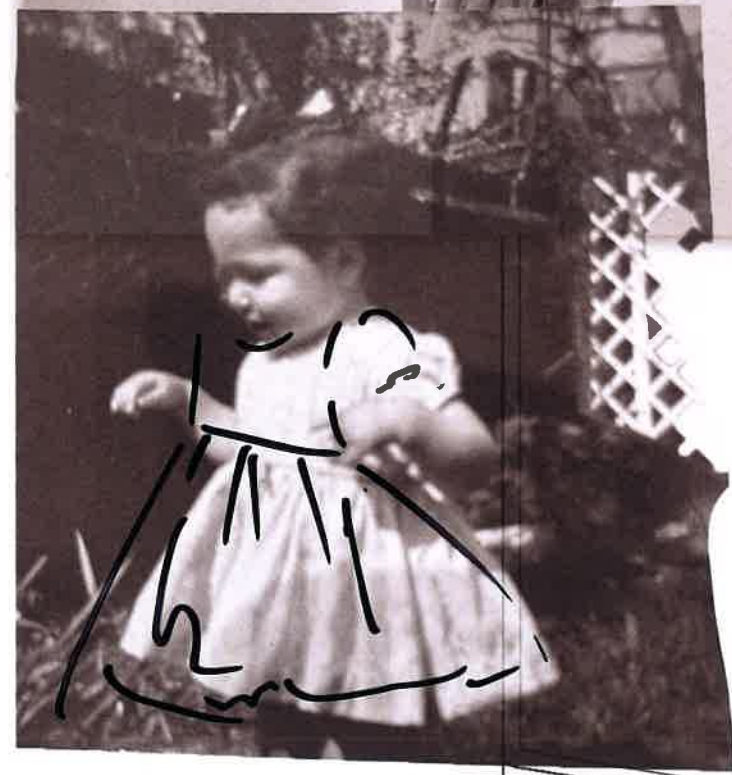
//TOILING OYSTER TECHNIQUE//

BABYDOLL TOP//

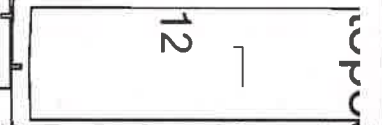
- TOILING WITH PROPORTION AND VOLUME
/LOOK 2 TOP FOR GRADUATE COLLECTION



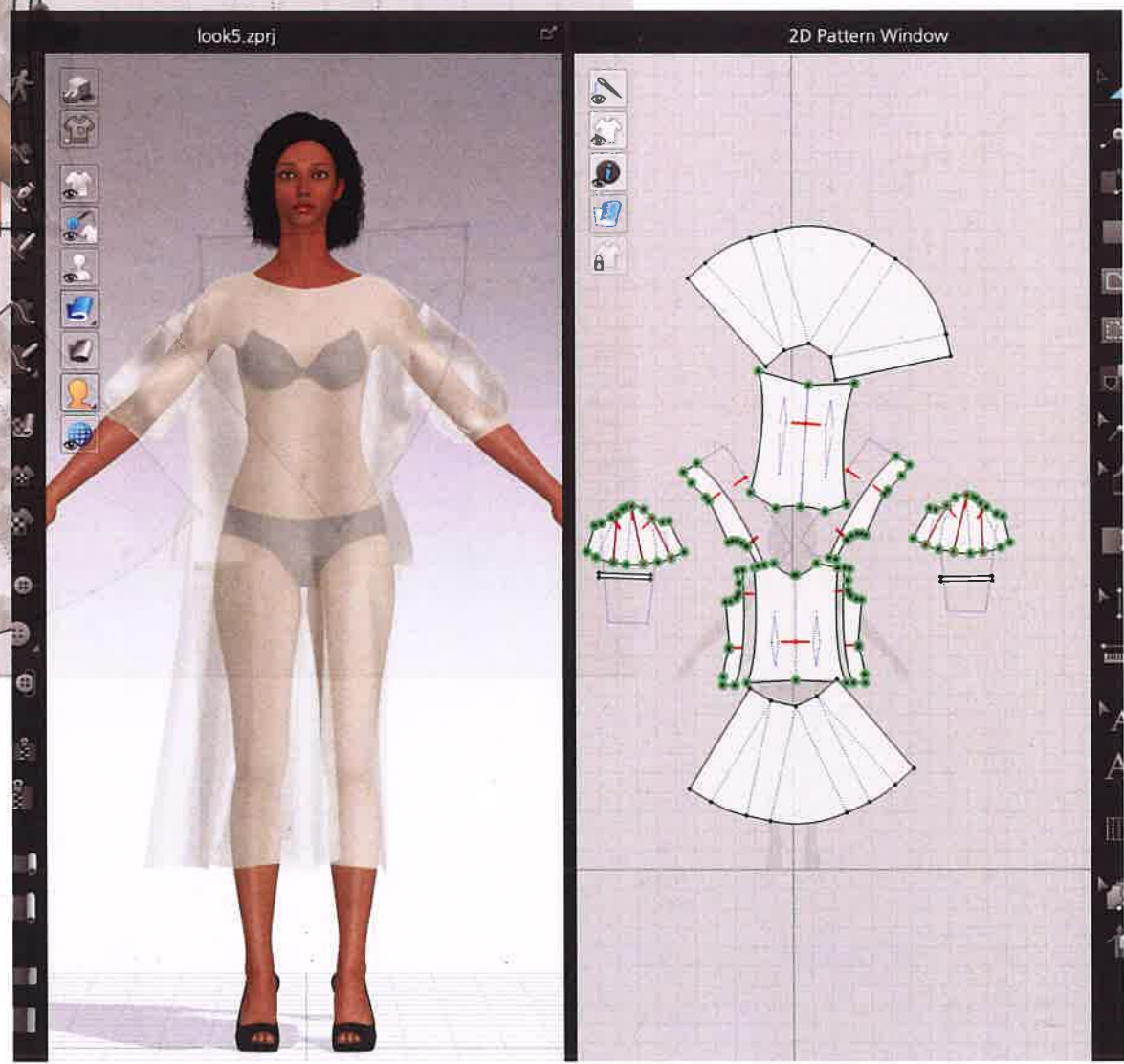
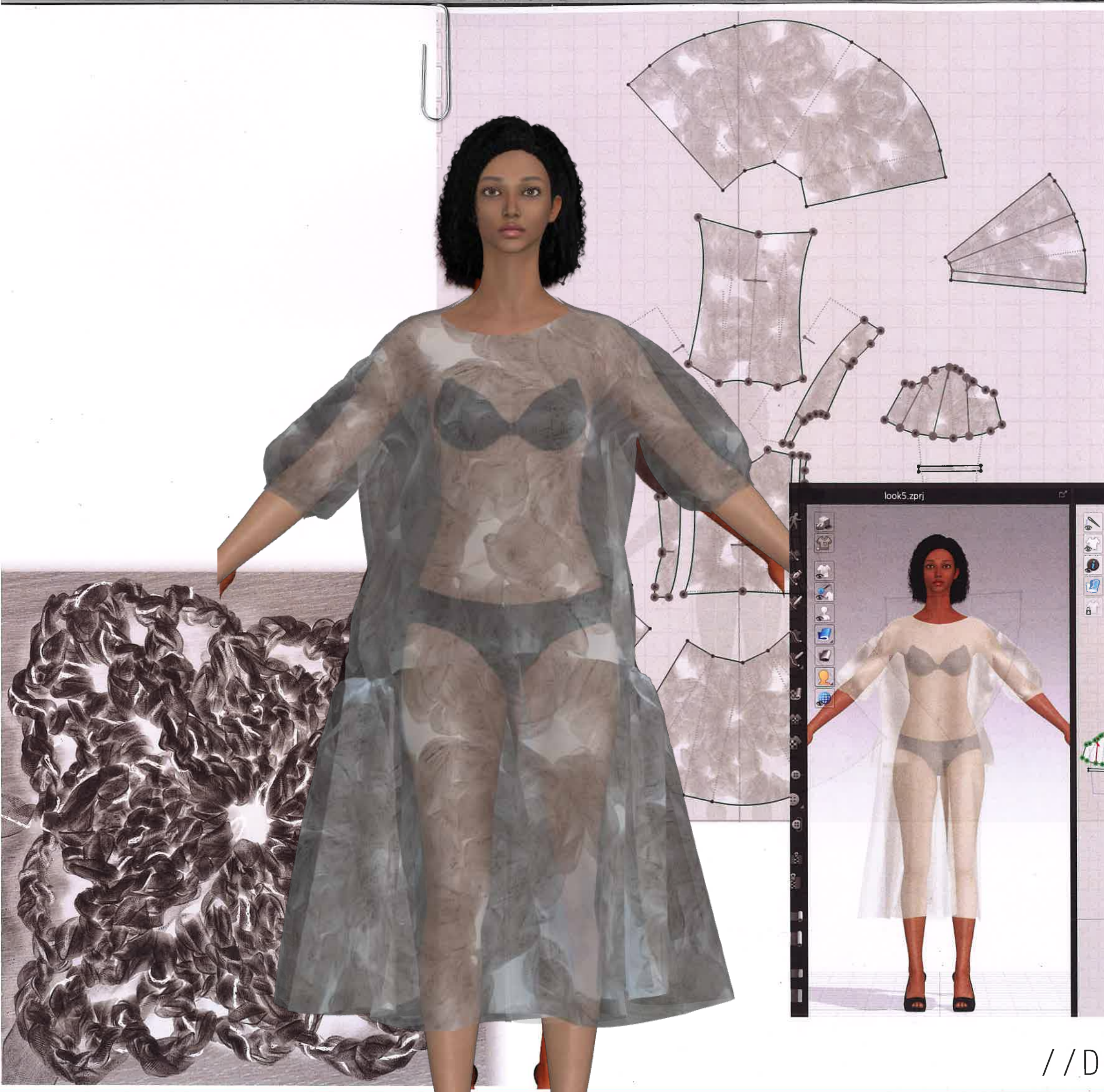
top54



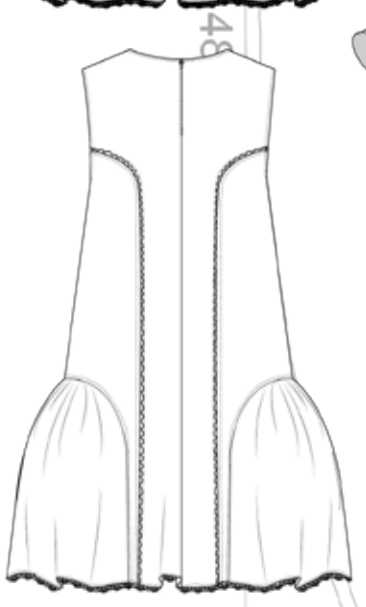
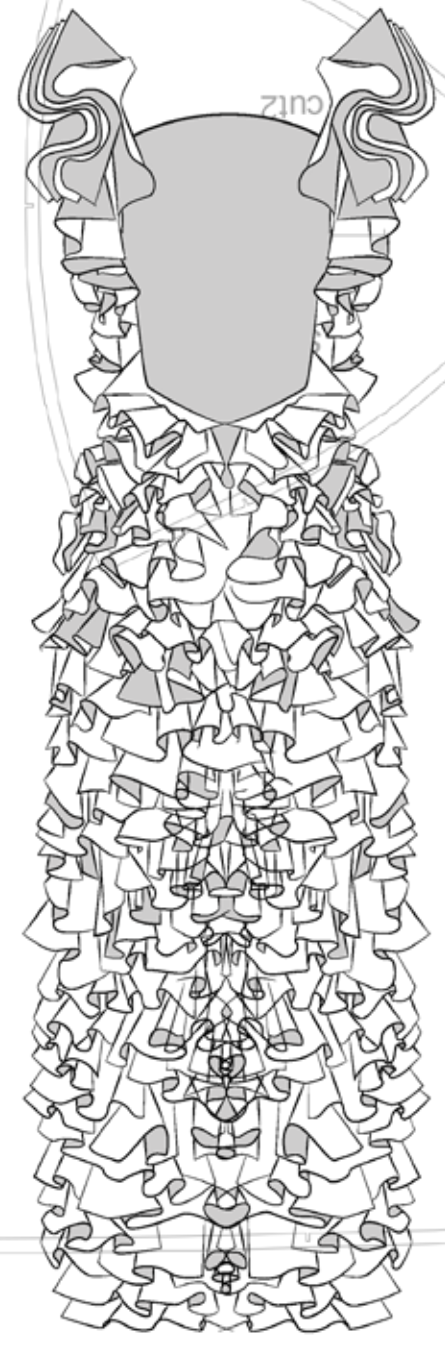
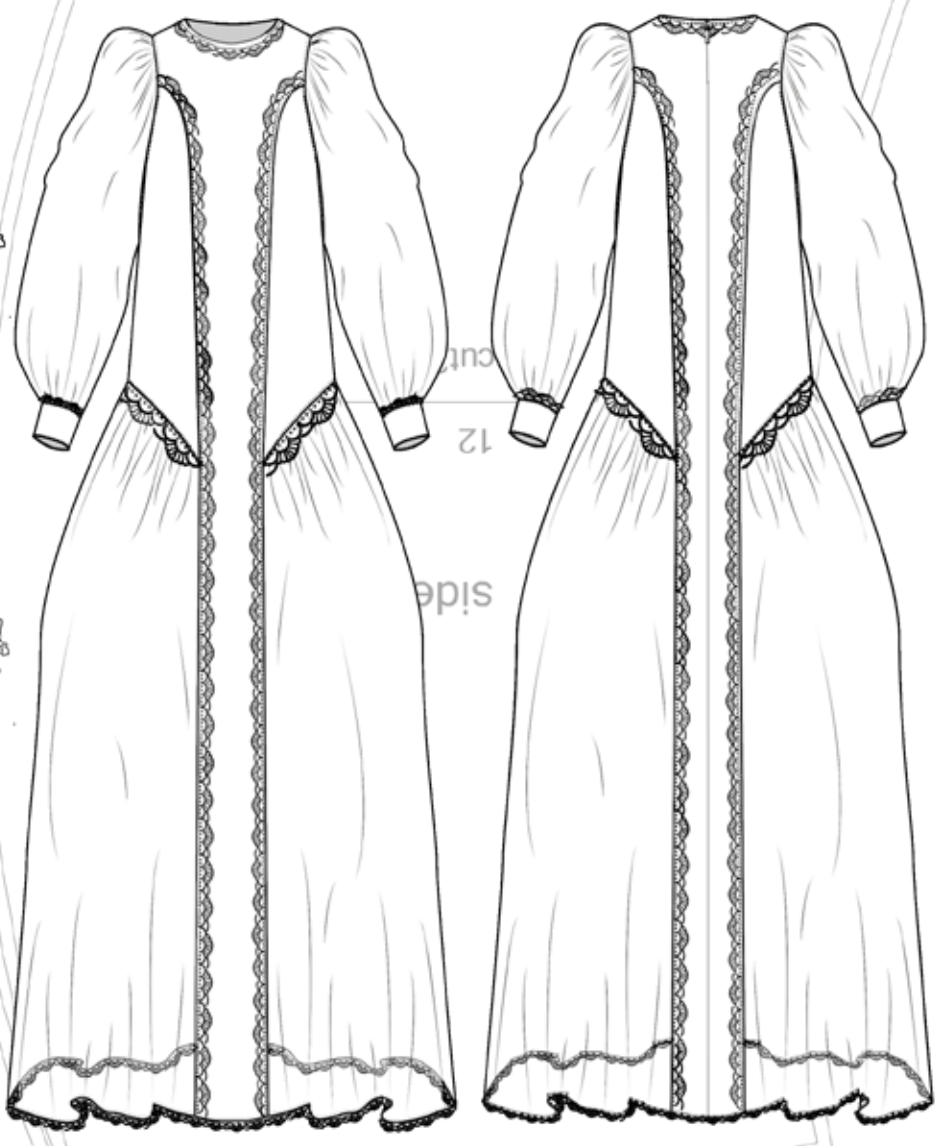
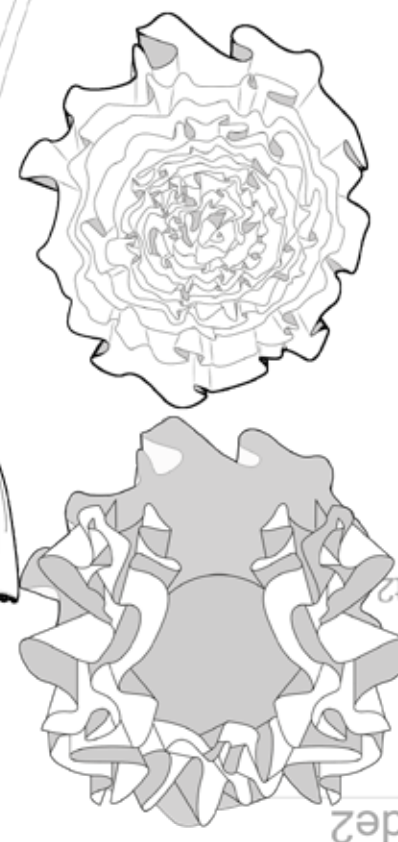
top55



//TOILING PROCESS//



look5skirtlay



BACK
12
cut 2

cut
12
side

front

cut2

12





- COTTON TULLE (DEADSTOCK)
BLACK PIGMENT + PUFF BINDER

= COTTON TULLE (DEADSTOCK)
= SUPER WHITE + PUFF BINDER

- 100% COTTON ORGANDIE
= PUFF BINDER + SUPER WHITE
RATIO// 3:1

- 100% COTTON ORGANDIE
= BLACK PIGMENT + PUFF BINDER
RATIO// 1:1

- CREPE
= FLOCK ADHESIVE + PAPER

- BLACK POLYCOTTON
= FOIL + FOIL ADHESIVE
(HEAT PRESS)

-100% COTTON ORGANDIE
= FOIL + ADHESIVE
(HEAT PRESS)



