

FRAGILE REFLECTIONS

A PROJECT INSPIRED BY LOSS, LIFE, TIME AND THOSE AROUND US

JENNA REBECCA FOX

FRAGILE REFLECTIONS

RESEARCH

INSPIRATION

IMAGERY THROUGH MEDICAL JOURNALS, RESEARCH MAGNIFIED SURFACES, COLLECTIONS/ARTISTS WITH SIMILAR CONCEPTS, RESEARCH INTO TEXTILE ARTISTS.

- BIOLOGY
- DECAY & AGING
- MAGNIFICATION
- BREAKDOWN ARTISTS
- TEXTILE INSPIRATION
- CELLS & SKIN

DESIGN

DEVELOPMENT

USE RESEARCH TO DEVELOP DESIGNS AND IDEAS GOING FORWARD, COLOUR PALETTE, FABRIC CHOICES AND ACCESSORIES.

- LAYERS & CUTOUTS
- TEXTILES
- COLOUR PALLETE
- NATURAL FABRICS
- SEASON (A/W)
- ACSESSORIES (BAG, GLASSES, JEWELERY)
- OUTFITS (SUITS)

OUTCOME

RESULT

MY AIM IS TO HAVE 3 OUTFITS DESIGNED AFTER EXTENSIVE TEXTILE RESEARCH AND DEVELOPMENT RESULTING IN 3 SUITS THAT PROGRESSIVELY BECOME MORE FRAGILE

- 3 SUITS
- MORE DECAY/LAYERS
- INCLUDING ACSESSORIES
- SOLIDIFY STORY.

FRAGILE REFLECTIONS



GENDER : UNISEX

EDUCATION : BA/MA HOLDER

AGE : 30-60

GEOGRAPHICAL LOCATION: CITY

INCOME : 50K - 80K



HOBBIES : READING, WATCHING HORROR MOVIES, COCKTAIL MAKING, VISITING GALLERIES

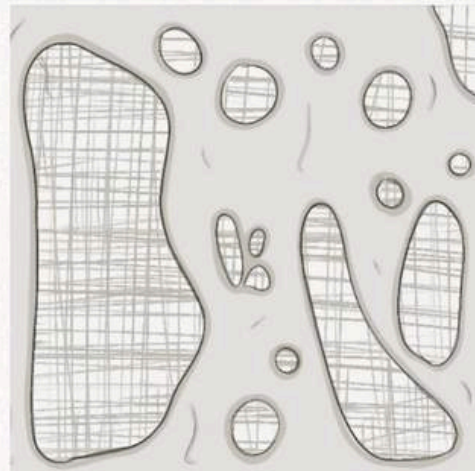
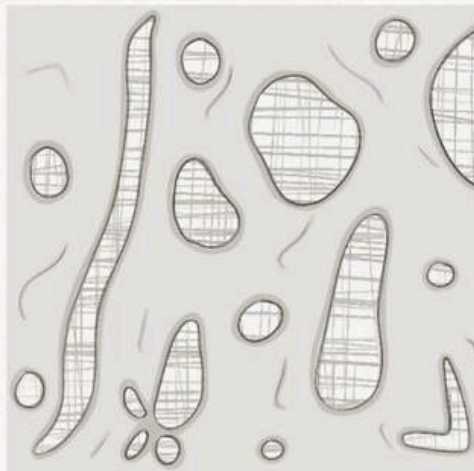
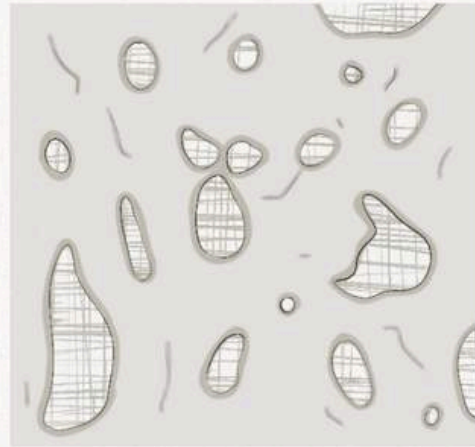
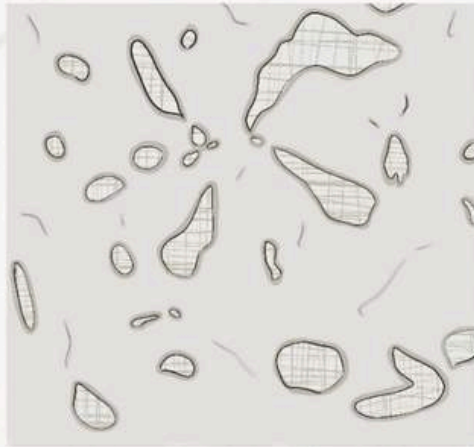
PERSONALITY : AMBIVERT, AMBITIOUS, ASSERTIVE, STRAIGHT FORWARD, CREATIVE, MATURE, SPIRITUAL

AESTHETIC : DARK, SHARP, COMPLEX, EDGY, MODEST, LAYERED

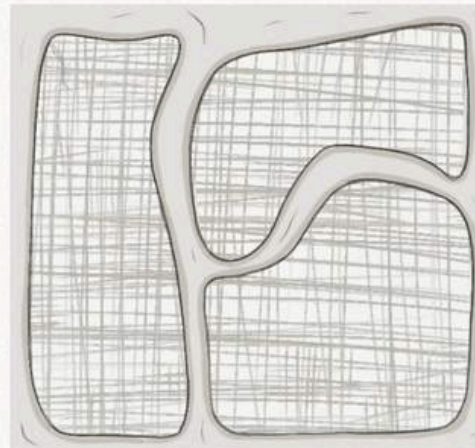
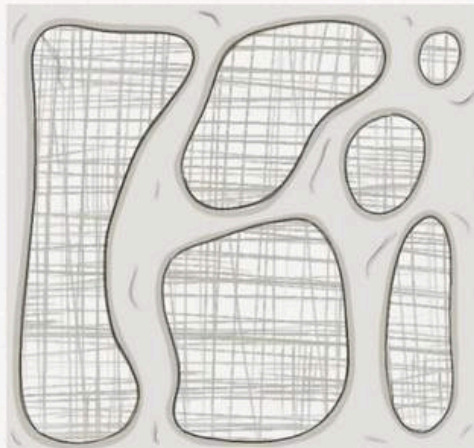
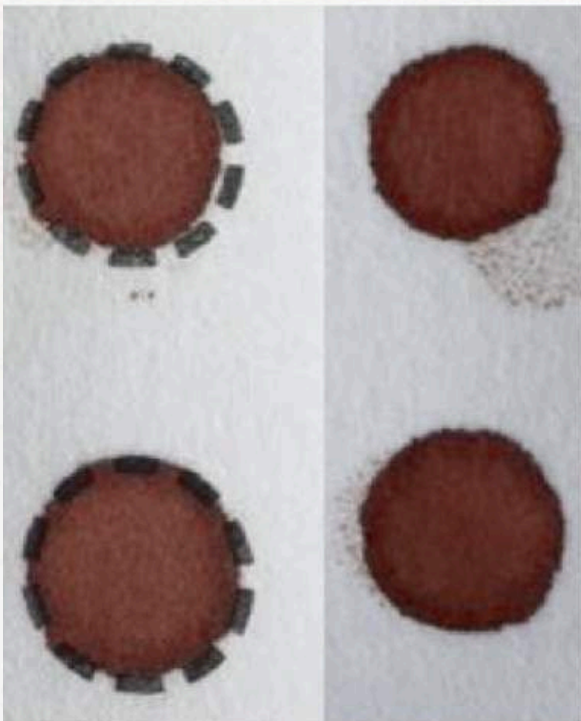
LIFESTYLE : PRODUCTIVE, CREATIVE JOB, MINIMALIST, NETWORKING EVENTS, ACCOMPLISHED

CUSTOMER PROFILE

FRAGILE REFLECTIONS



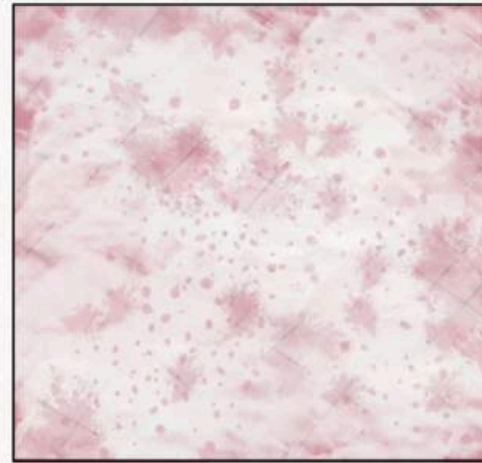
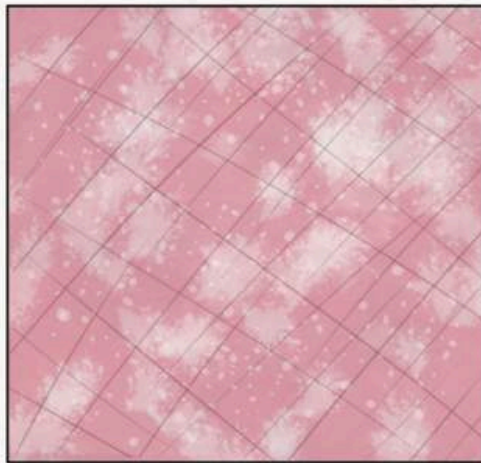
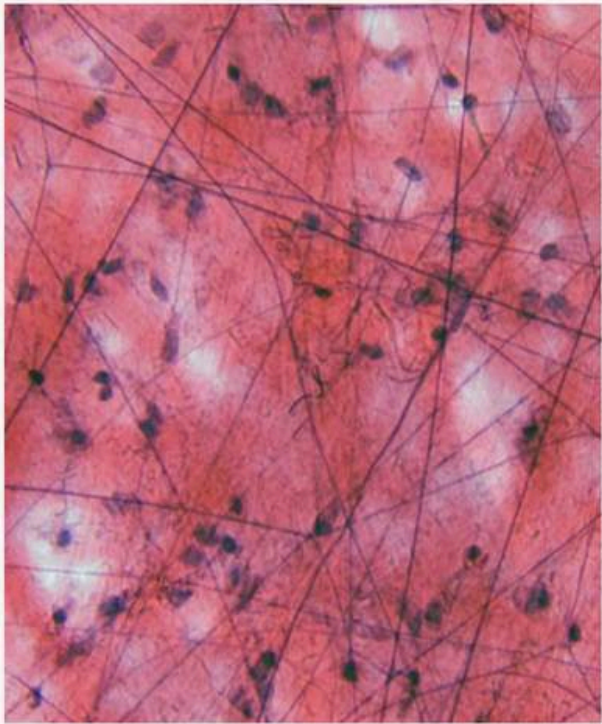
FOR THIS TEXTILE I TOOK INSPIRATION FROM CONNECTIVE TISSUE BEING PULLED APART AND THE APPEARANCE OF DRIED BLOOD.



WHEN MAKING THIS SAMPLE I WANT TO ADD A BROWN/RED EDGE ALONG THE CUTOUTS EITHER THROUGH BURNING OR PAINT THEN USE WEBBING/NETTING TO CREATE THE STRINGS OF TISSUE BEING PULLED APART

TEXTILE 1 - PLAN & SAMPLE

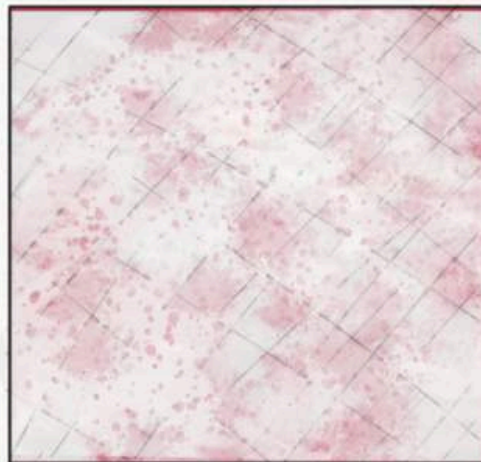
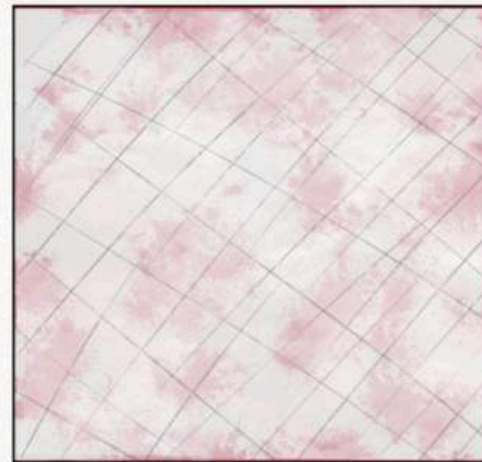
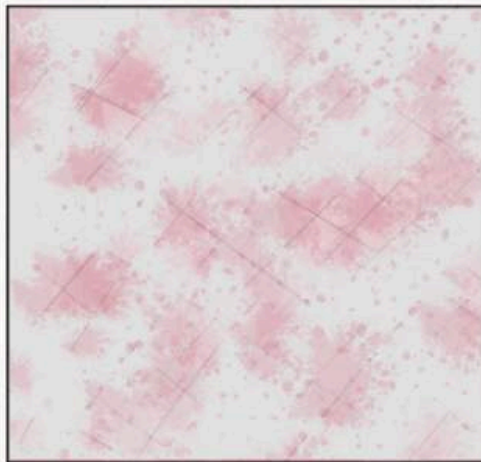
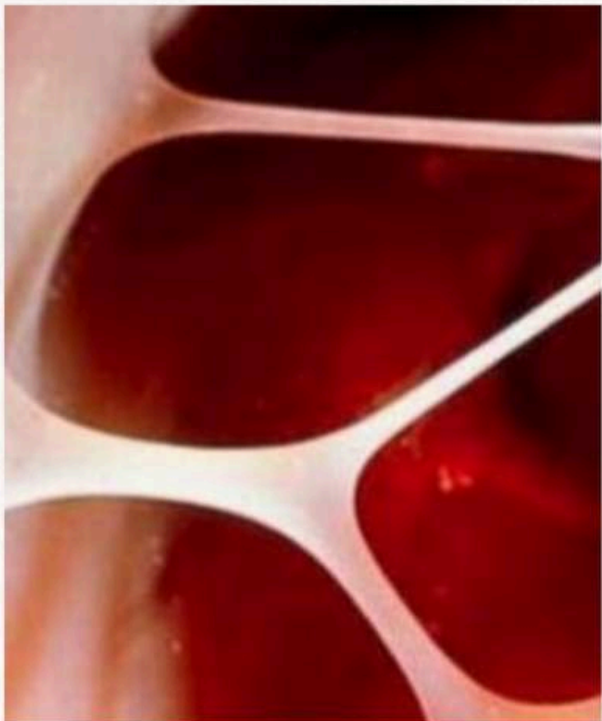
FRAGILE REFLECTIONS



FOR THIS TEXTILE I TOOK INSPIRATION FROM HEARTSTRINGS AND NERVES.

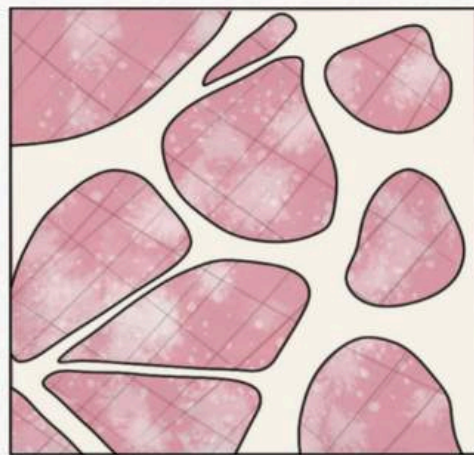
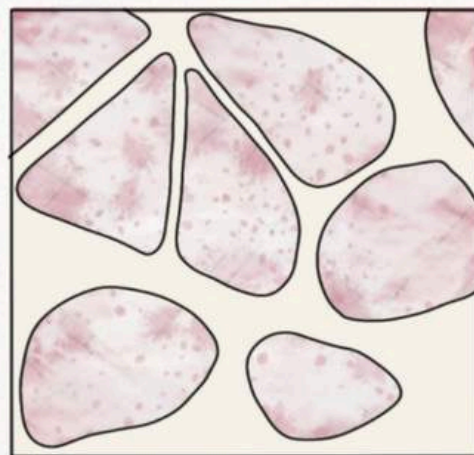
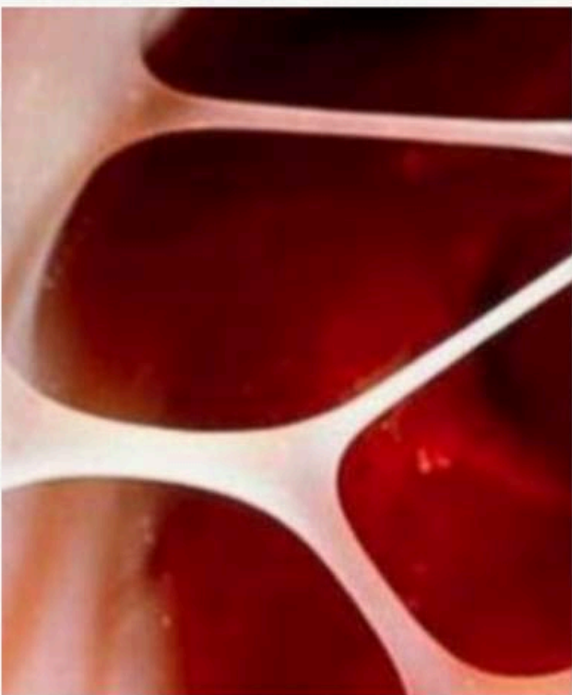
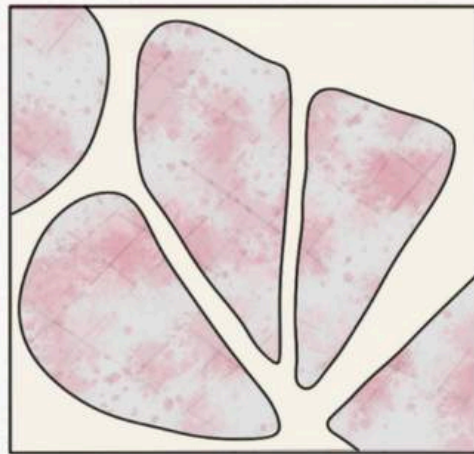
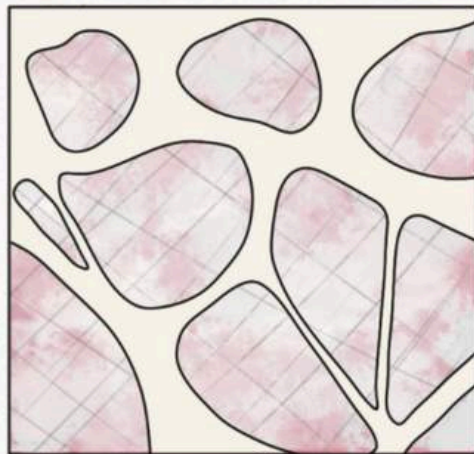
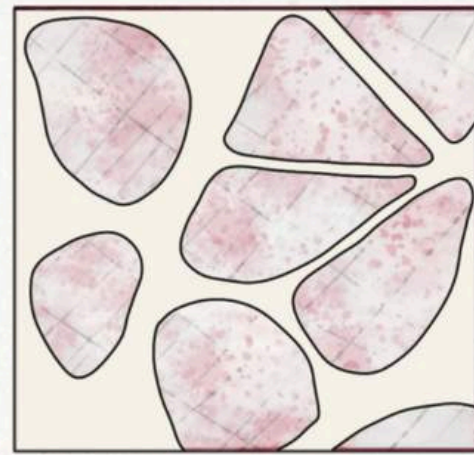
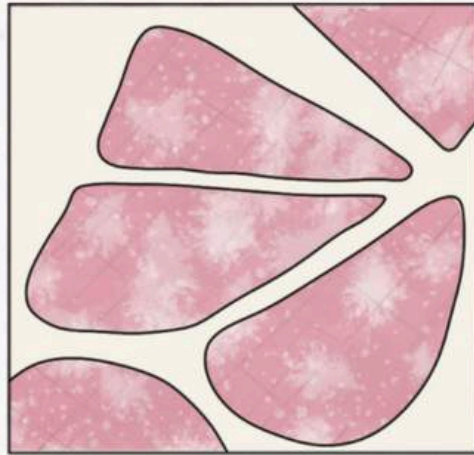
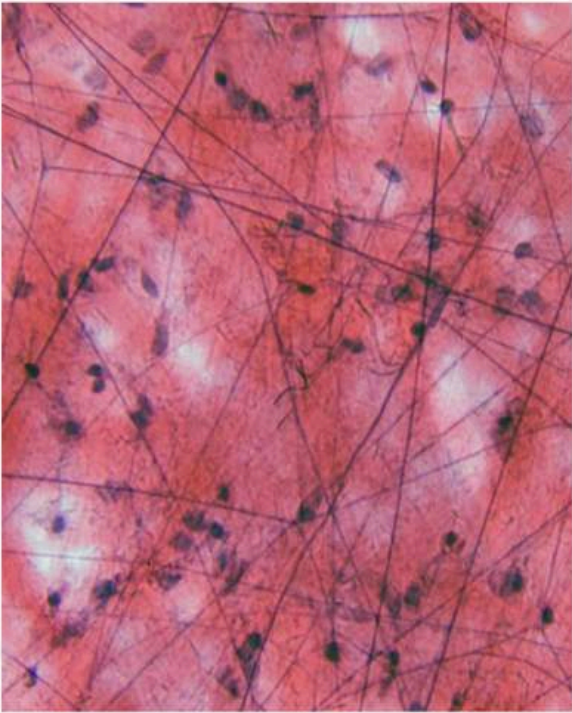
FOR THE TEXTILE UNDERNEATH I TOOK INSPIRATION FROM THE NERVES AND HOW THEY ARE IMBEDDED WITHIN TISSUE, TO RECREATE THIS I WANT TO EITHER DYE THE WEBBING A DEEP BROWN/RED OR LEAVE IT WHITE

FOR THE CUTOUTS I TOOK INSPIRATION FROM THE SHAPES THAT THE HEARTSTINGS CREATE WHEN INTACT



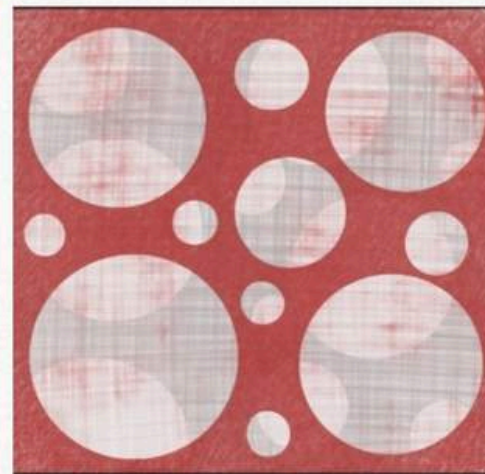
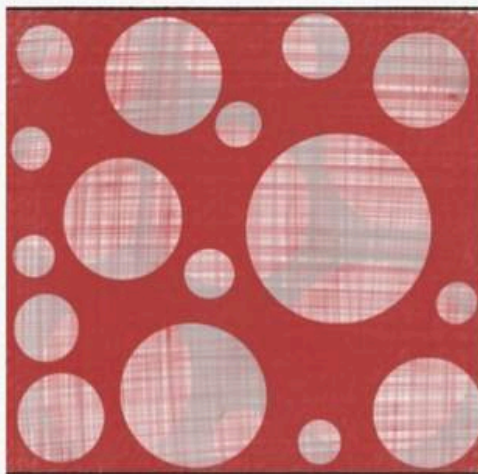
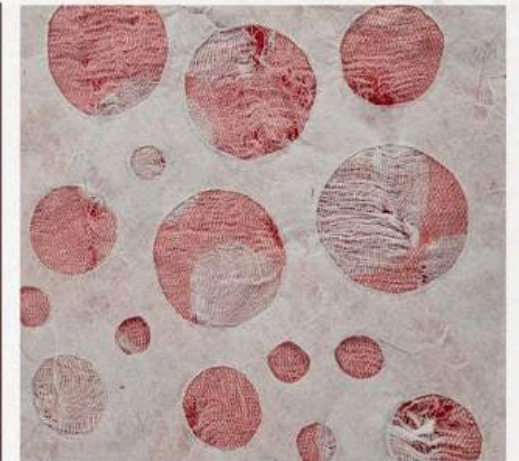
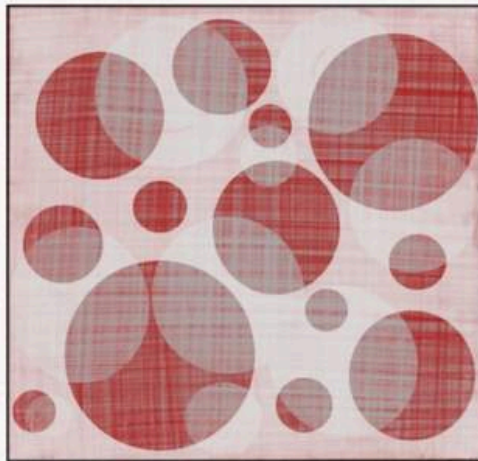
TEXTILE 2 - PLAN & SAMPLE

FRAGILE REFLECTIONS

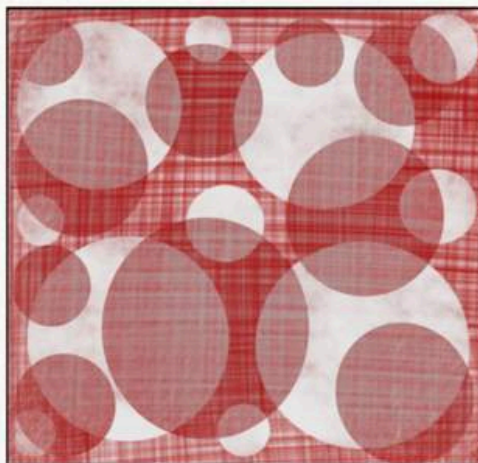
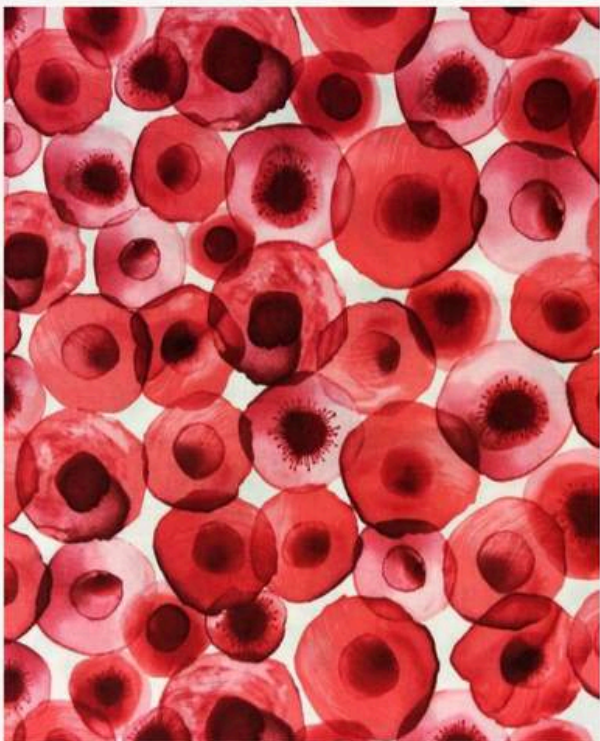


TEXTILE 2 - CUTOUT PLACEMENT

FRAGILE REFLECTIONS



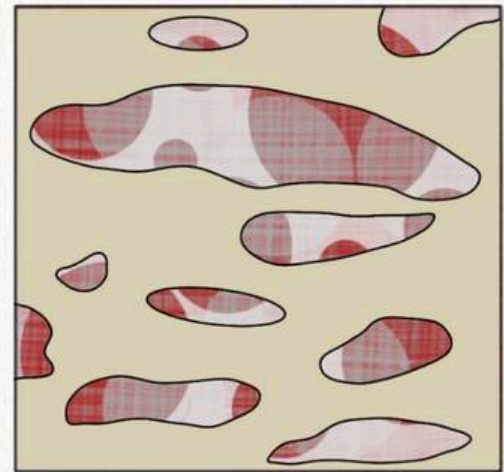
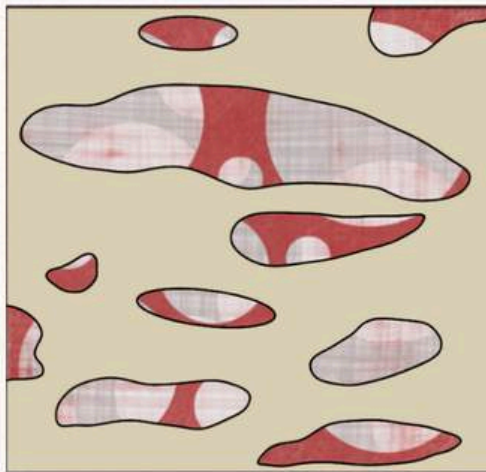
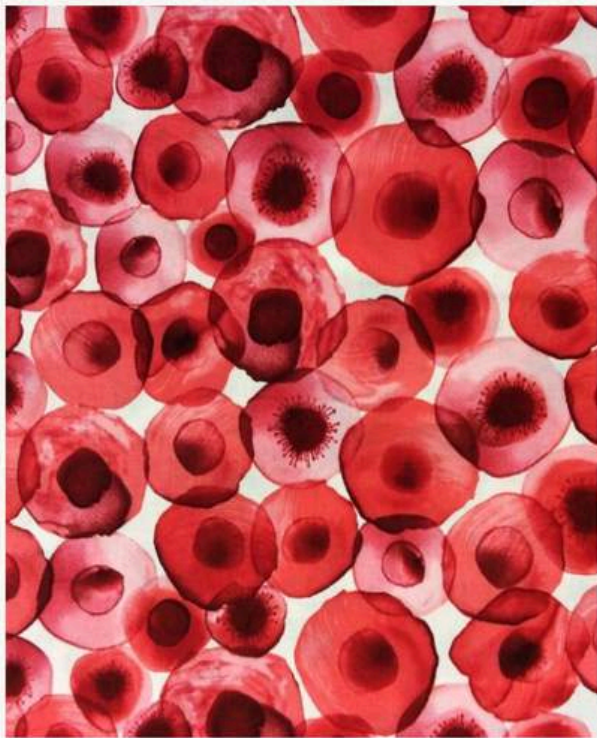
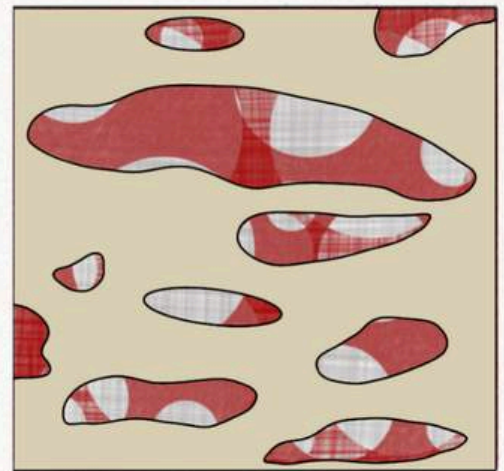
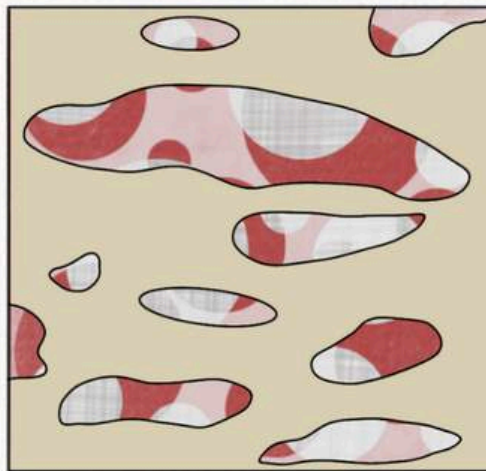
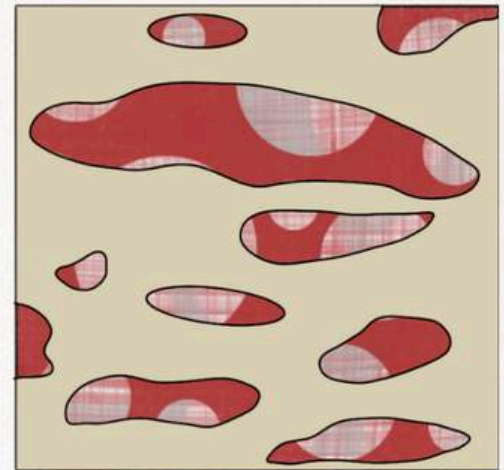
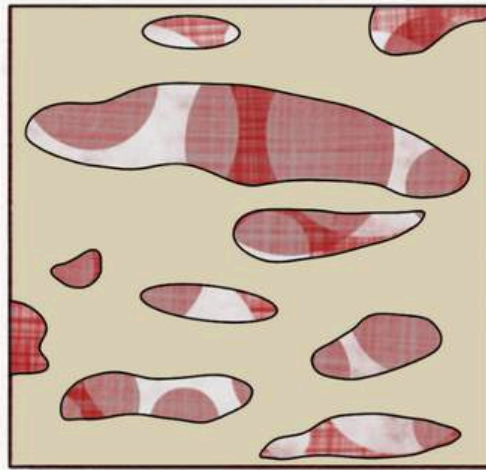
FOR THIS SAMPLE I WAS INSPIRED BY MAGNIFIED BLOOD SAMPLES.



WHEN MAKING THE TEXTILES THE TOP TWO LAYERS OF FABRIC HAVE CUT-OUTS WHICH REPRESENTS THE OVAL/CIRCLE PATTERN THATS SHOWN ON THE MAGNIFIED BLOOD SAMPLE. THE BOTTOM TWO LAYERS ARE THERE TO GIVE A CONTAST TO THE TOP LAYERS SO DETAILS CAN BE SEEN.

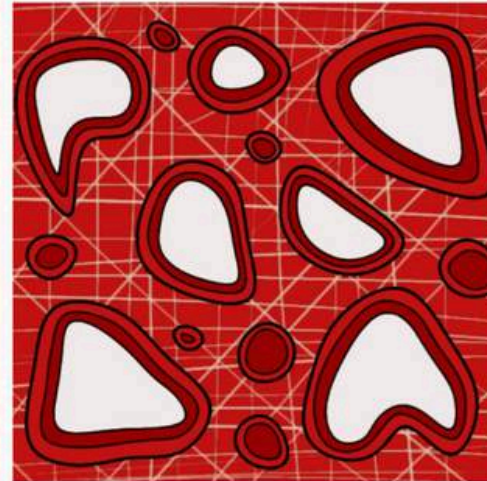
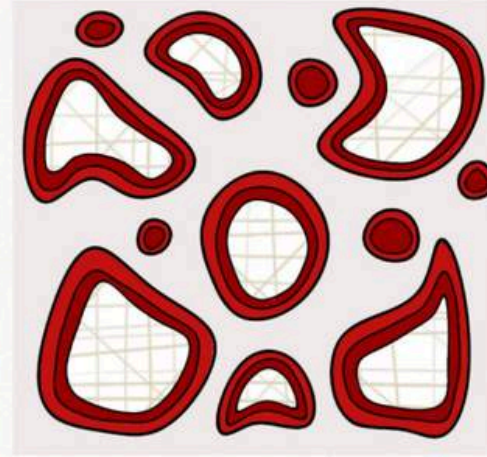
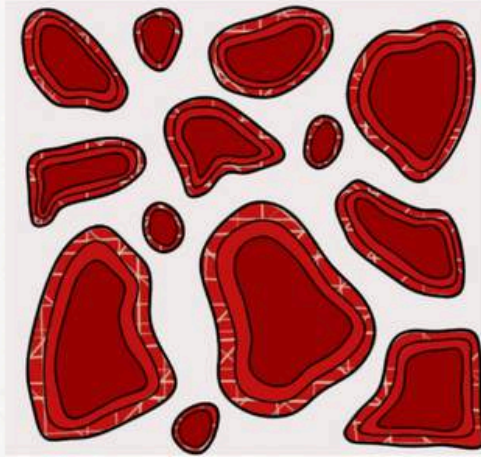
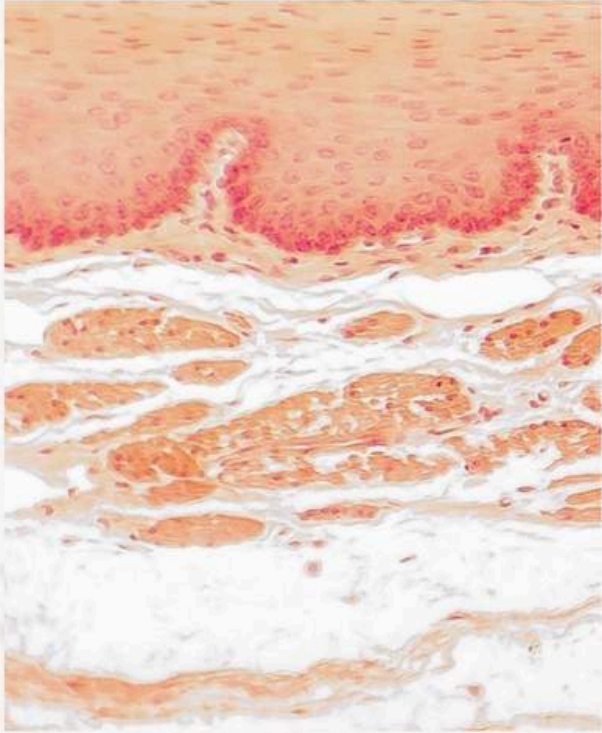
TEXTILE 3 - PLAN & SAMPLE

FRAGILE REFLECTIONS

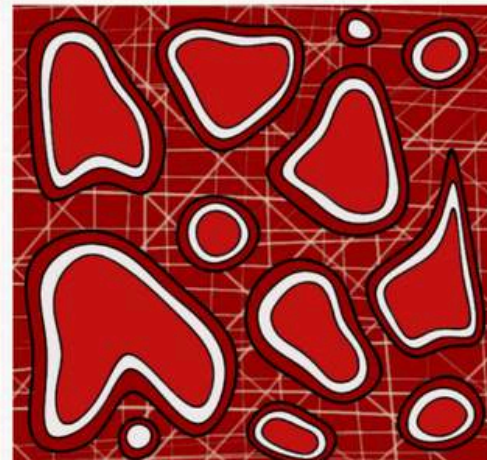
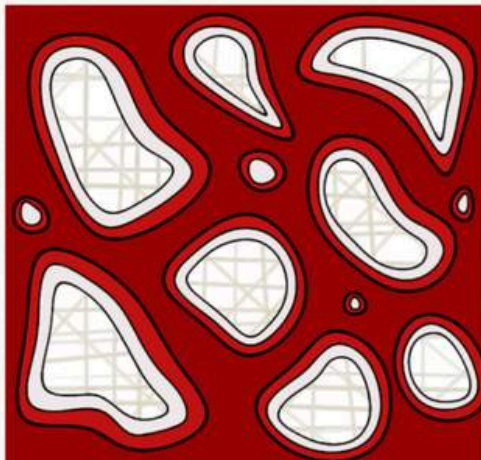
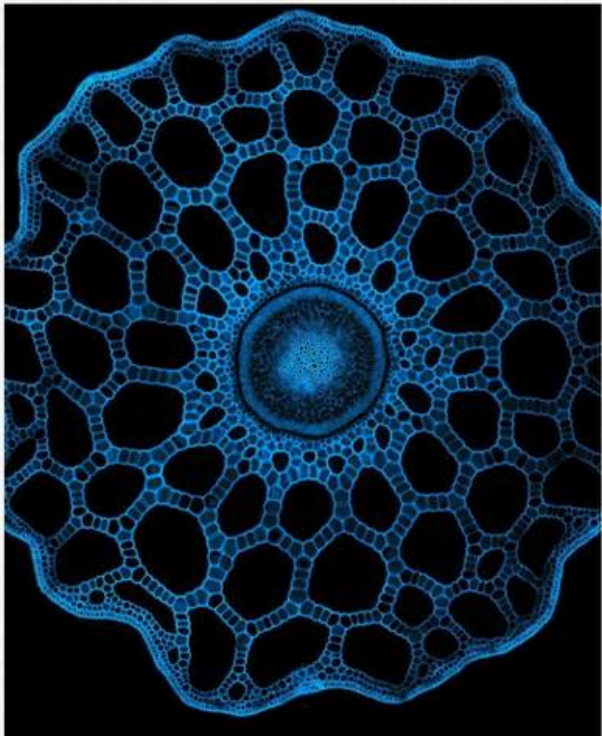


TEXTILE 3 - CUTOUT PLACEMENT

FRAGILE REFLECTIONS

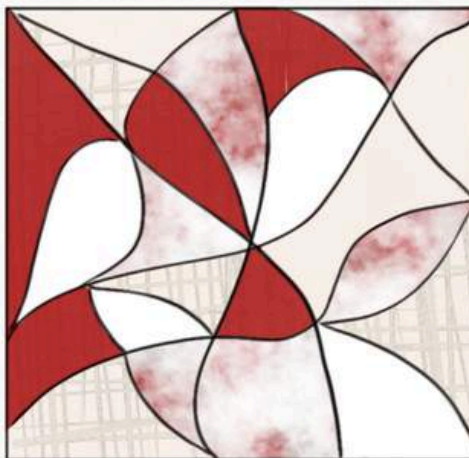
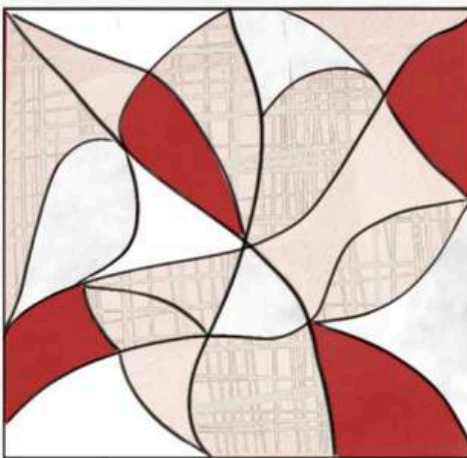
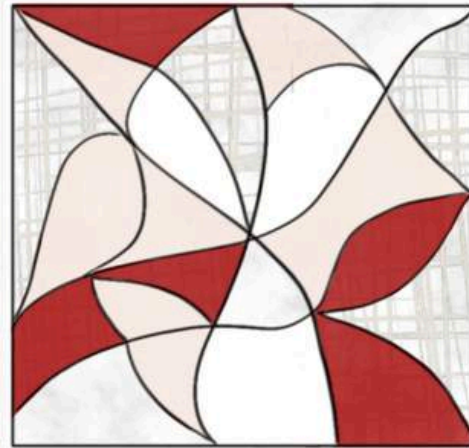
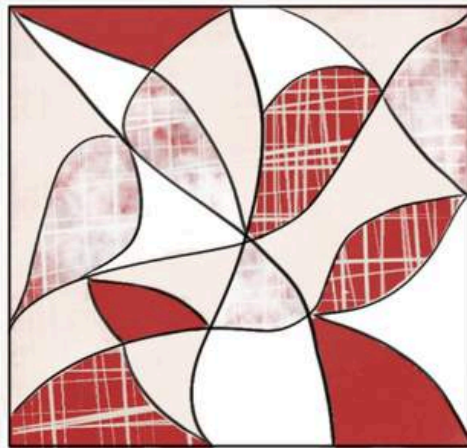
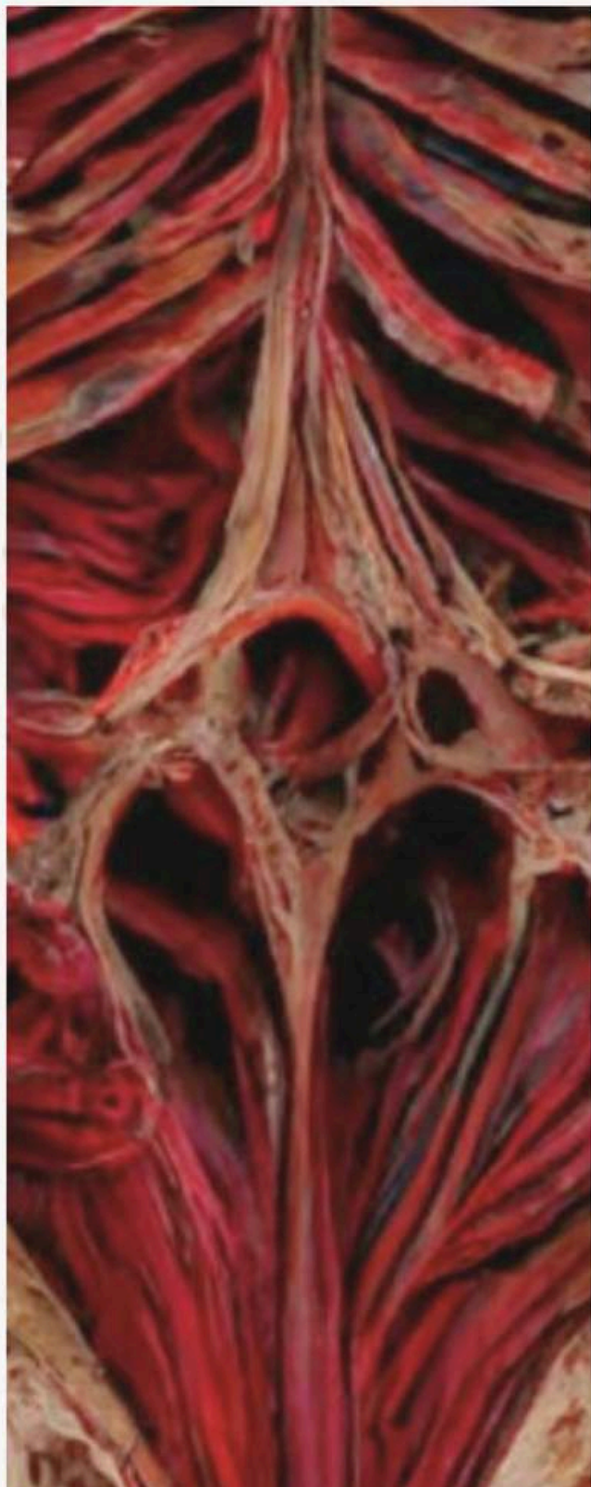


THIS TEXTILE IS INSPIRED BY THE DIFFERENT LAYERS OF SKIN AS WELL AS SKIN CELLS THAT HAVE BEEN MAGNIFIED.



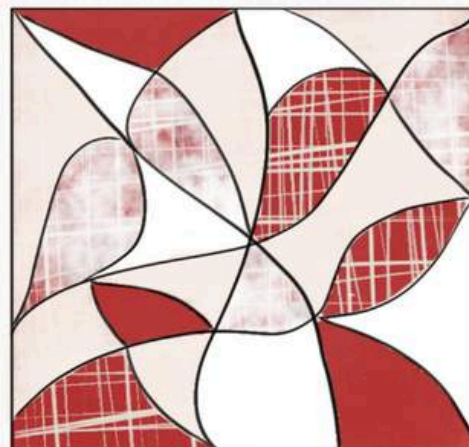
MY AIM IS TO LAYER MULTIPLE TYPES OF FABRIC AND CREATE CUTOUTS IN THE SAME PLACES BUT EACH LAYER THE CUTOUT GETS SMALLER EACH TIME, THIS MEANS THAT ALL LAYERS ARE SHOWN CONSISTENTLY THROUGHOUT THE TEXTILE SHOWING ALL THE TEXTURES AT ONCE

FRAGILE REFLECTIONS



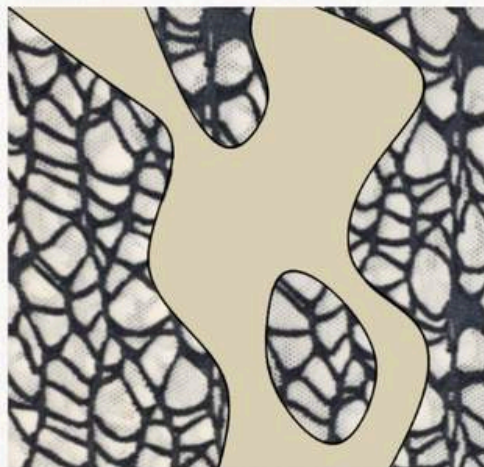
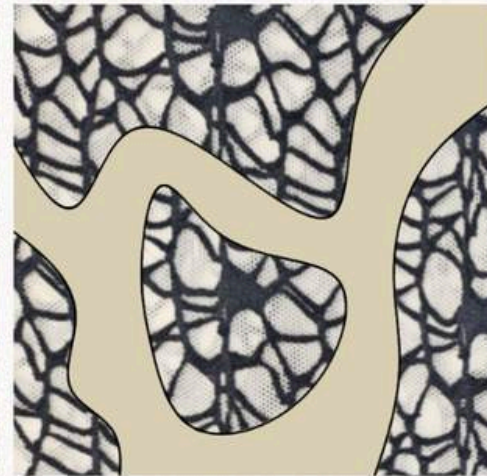
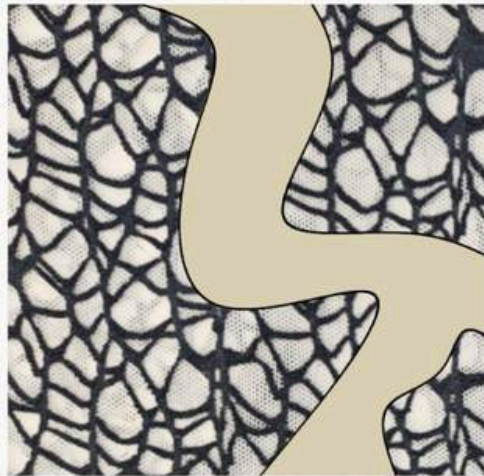
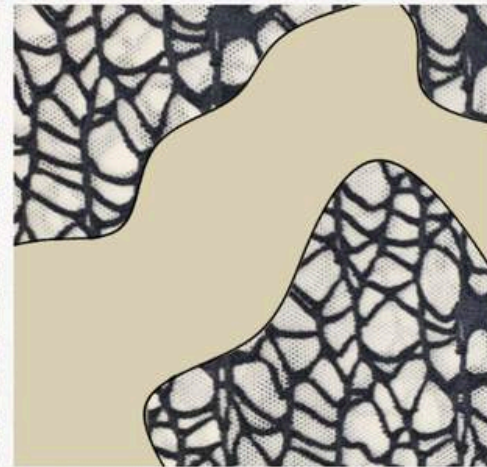
THIS TEXTILE IS INSPIRED BY A CROSS BODY SECTION OF THE TORSO.

WHEN CREATING THIS TEXTILE I WANT TO USE THE SAME COLOURS SHOWN FOR MY FABRICS THEN USE THE SHAPES THAT ALL THE BONE, TISSUE AND CARTILAGE CREATE AS WHERE I WANT TO CUT OUT ON THE GARMENT.



TEXTILE 5 - PLAN & SAMPLE

FRAGILE REFLECTIONS



THIS TEXTILE IS
INSPIRED BY DECAY,
ASH AND DEAD
NERVES

FOR THIS TEXTILE I
FOUND A FABRIC
THAT PRODUCES THE
EXACT LOOK I WANT
FOR OUTFIT 6. I
CHOSE BLACK FOR
THE FINAL OUTFIT AS
IT REPRESENTS THE
FINAL STAGE OF
DECAY AND THAT'S
ASH. THE PATTERN ON
THE FABRIC
REPRESENTS
DECAYED NERVES
AND HOW THEY HAVE
A LACK OF FUNCTION.

TEXTILE 6 - PLAN & SAMPLE

FRAGILE REFLECTIONS



OUTFITS 1-3

FRAGILE REFLECTIONS



05

06

07

08

09

10

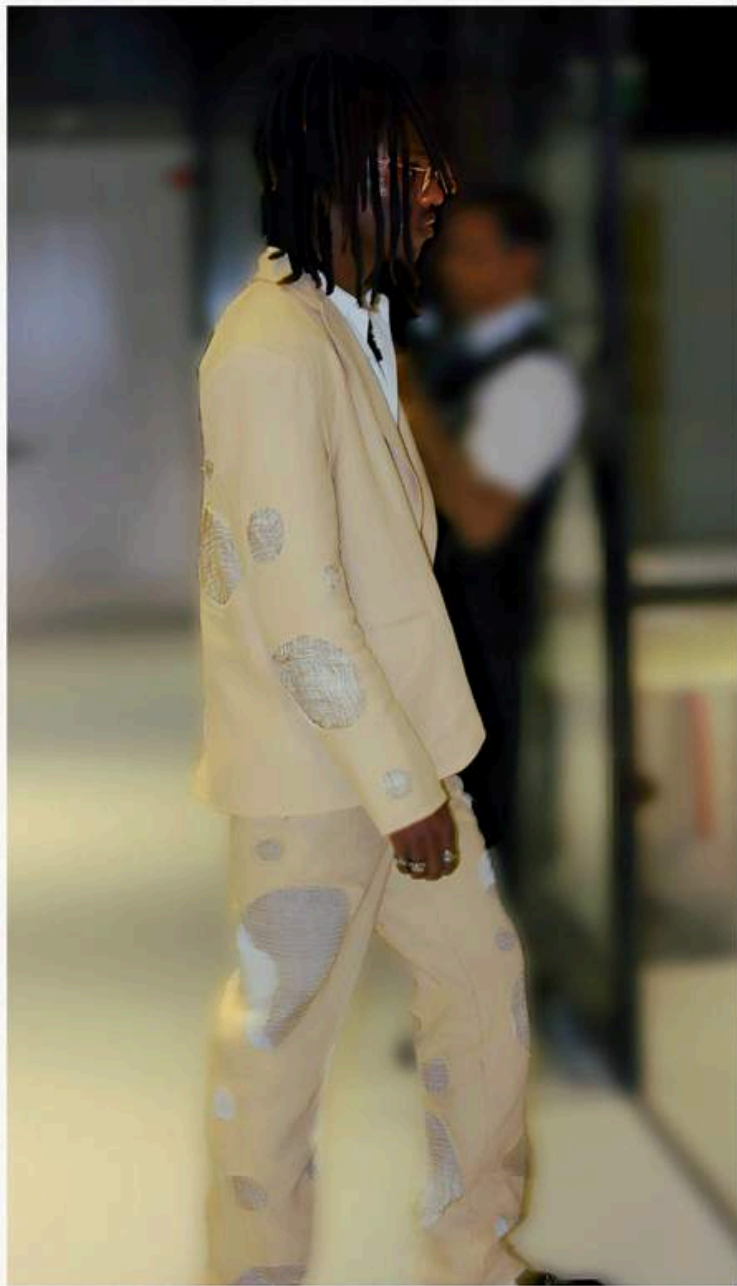
OUTFITS 4-6

FRAGILE REFLECTIONS



OUTFIT 1

FRAGILE REFLECTIONS



OUTFIT 1