

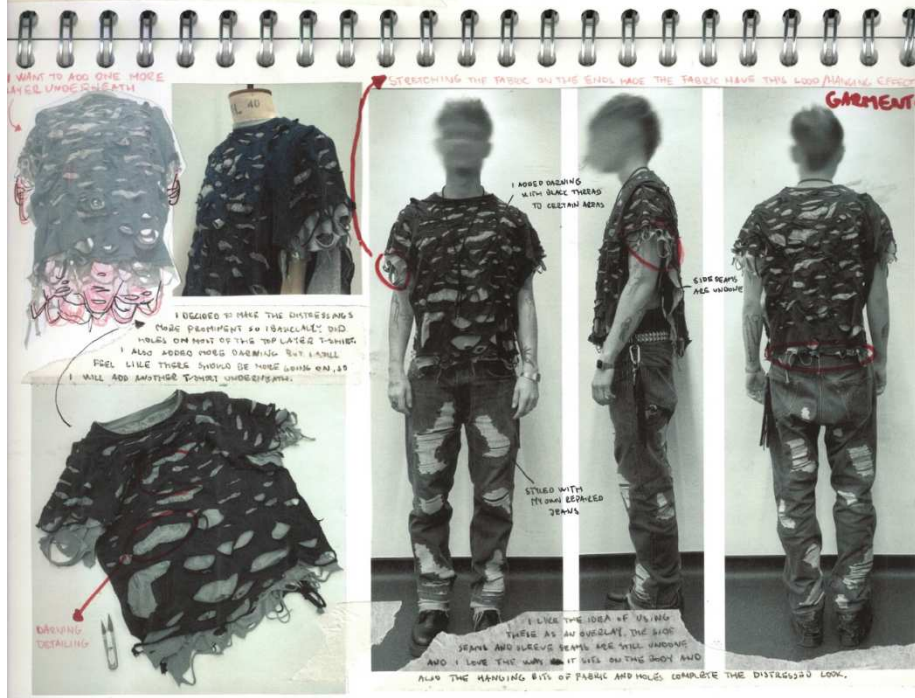
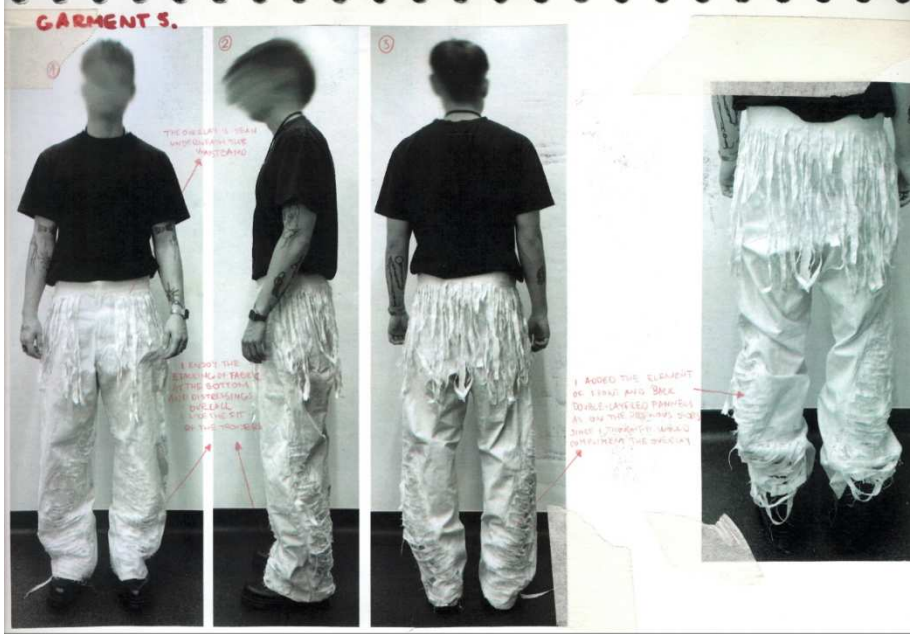


MENSWEAR DESIGNER GRADUATE PORTFOLIO
MAX BASALA

UNI FINAL COLLECTION POST-MATERIALIST - MOODBOARD



UNI FINAL YEAR DESIGN/TOILES PROCESS



UNI FINAL YEAR DESIGN/TOILES PROCESS

"TRIPLE LAYER T-SHIRT/BALAKLAVA"

I STILL WANTED TO HAVE THIS PIECE AS A COOL OVERLAY GARMENT AND I THINK IT LOOKS GREAT WITH THE THIED T-SHIRT

ADDED: I LIKE THE WAY IT CAN BE USED AS A HOODING OVERHEAD

1 2 3 4

HERE BEING ON THE SHOULDER GIVE AN OVERALL BETTER AND NEAT LOOK

I ADDED THIED T-SHIRT UNDERNEATH AND THE LACE WITH HOW IT LOOKS NOW

VISUALISATION ON MANNEQUIN HEAD AFTER ADDING THE 3RD T-SHIRT

THIS IS WHERE I WANT TO PUT SNAP BUTTONS SO THE OPENING IS ADJUSTABLE

I TOOK A BUNCH OF PHOTOS BECAUSE I WANTED TO EDIT THE MASK SO VISUALIZE HOW IT WOULD LOOK IF I HAD 2 SEPARATE PIECES (MASK AND T-SHIRT OVERLAY) AND WORK THEM TOGETHER



THIS IS HOW THE FINAL BALAKLAVA/MASK LOOKS LIKE ON BODY I USED THE BASE/BOTTOM LAYER T-SHIRT AS A "SHOULDER OVERLAY" INSTEAD OF JUST WEARING IT HANGING.

I WANT TO ADD SNAP BUTTONS TO MAKE THE HEAD OPENING ADJUSTABLE

DRAWING DETAILING

I ENJOY THIS "SHOULDER DRAWING" SINCE IT ADDS TO THE HEADLETTE AND THIS WAY IS GREAT FOR BOTH

GARMENT?

I WAS INSPIRED TO MAKE THIS IDEA A BIT MORE PRACTICAL AND WEARABLE SINCE BY THESE PICTURES IS AN ACTUAL SHIRT WEAPED AROUND THE HEAD

I WANTED TO MAKE A HOOD REPRESENTING THIS SHIRT LOOK.

I THINK THAT THE COLLAR WORKS BETTER AGAIN IT ENDS UP NOT DOWN ON NECK

"SHIRT-HOOD" SAMPLE/TOILE

BOTH SECTIONS HAVE CLIPS

I SWITCHED THESE BITS TOGETHER IN THE HOOD WAS A BETTER SHAPE AND IT REALLY HELPS THE COLLAR TO STAY IN ITS PLACE

SLEEVES ARE STAY INTO BOTH SIDES OF THE HOOD

I DON'T ADD BUTTONS TO THE TOILE, BUT THE BALLS WOULD BE FULLY OPENABLE WITH A PROPER SHIRT LABEL

3 VARIATIONS OF DESIGNS I SAID UP WITH BASED ON THE INSPIRATION ABOVE. I LIKE THE IDEA OF SLEEVES OUTSIDE A LOT.

UNI FINAL COLLECTION GARMENT PROCESS



UNI FINAL COLLECTION GARMENT PROCESS



UNI FINAL COLLECTION GARMENT PROCESS

GARMENT 5 INSPO/DESIGN

I GOT THIS FABRIC IN RECYCLING AND CRAFT STORE IN COUNTRY. IT SEEMS LIKE A GREEN ONE CALICO AND THEY HAD SHIRT AND SWEATER SCRAP PIECES

FABRIC SWITCH 1.

INDICATION FOR LAYERING LIGHTER AND DARKER SHADES ON TOP OF EACH OTHER. DRAWING ASSED AND DISTRESSED LOOK WITH LOADS OF UNFADE AND WEAR.

IT IS REALLY HARD TO MAKE THE PHOTO RESEMBLE THE COLOR OF THE FABRIC BUT IT IS A GREEN WITH HINTS OF YELLOW AND PURPLE AND LIGHTER SHADES OF GREEN

DESTROYED VINTAGE SHIRT WITH LINE BUCKLES (SIMPATFASHION ON INSTAGRAM)

FABRIC SWITCH 3.

FABRIC SWITCH 2.

THE UNWORN DYE ON ALL OF THESE PIECES OF FABRIC CREATE BEAUTIFUL GRADIENTS, SHADES AND ALSO LOOKS OF LINES THAT REMIND VEINS

UNUSUAL SOURCE (ANTHROPS) VINTAGE BOYS INSECT A DEBRATING (DISTRESSED) WHITE SHIRT THAT SEEMS LIKE IT IS TALKING ABOUT



SOME OF THE DISTRESSED TOP LAYER PIECES BACK WITH YOGI COLLAR AND POCKETS WITH PANTS

DISTRESSED PIECE OF THE FABRIC

THREAD I USED FOR THE FINAL SHIRT

THE SHIRT WITHOUT THE LAYERING I ADDED TWO LIGHT POCKETS WITH PANTS WHICH FEATURE THE SAME DOUBLE LAYERED DISTRESSED DESIGN

I RECENTLY CUT OUT ALL THE TOP LAYER FABRIC PIECES. THE WHOLE SHIRT IS GOING TO BE DOUBLE LAYERED WITH THE TOP LAYER BEING DISTRESSED AND READY TO SHOW THE LOWER LAYER

PROCESS OF USING THE DESIGN AND DIFFERENT ATTACHMENTS TO DISTRESS THE FABRIC. IT IS A LONG PROCESS.

ADD THE BLENDING, SEE LABEL AND HANGING LOOP ON THE INNER BACK WAISTE

PANELS OF THE SHIRT WITH BOTH LAYERS SEWN TOGETHER

HERE I WAS LOOKING FOR THE COLLAR FITS

FRONT SIDE 1 BACK SIDE 2

DOUBLE SIDED MEANT BUT SILVER METAL BOTH YOU NEED

HAND FITS PRICE AND SIZE ON THE BALL OF THE SHIRT

I ADDED A HOOD UNDER THE COLLAR AND SEWED SOMETHING TOGETHER

FRONT SIDE 4 BACK SIDE 2

I LOVE THE HOOD AND I COULDN'T DETAIL END MORE OVERLAP

DISTRESSED AND ALSO DOUBLE LAYERED HOOD MADE FROM MULTIPLE PANELS

I FINISHED THRESHOLD TO ADD SOME FUNCTIONALITY BUT ALSO TO HELP STAY THE ELONGATED SLEEVES NICELY

SIT OF STAGING ON THE SLEEVES THRU TO THE THUMBPIPES

FRONT 4

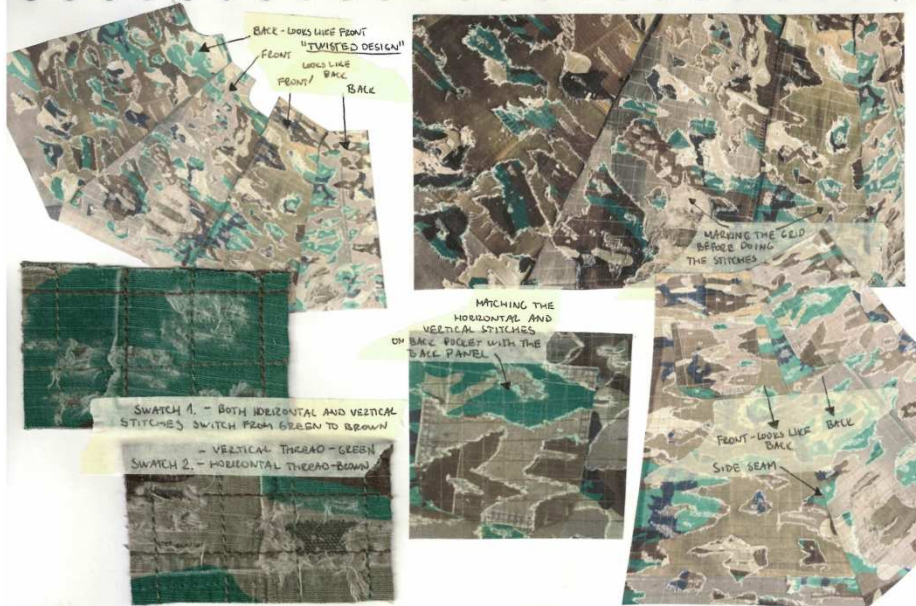
BACK 4

FRONT 2

BACK 2

SIDE 4

UNI FINAL COLLECTION GARMENT PROCESS



UNI FINAL COLLECTION GARMENT PROCESS



UNI FINAL COLLECTION POST-MATERIALIST - OUTFIT 1 - WIP



UNI FINAL COLLECTION POST-MATERIALIST - OUTFIT 2 - WIP



UNI FINAL COLLECTION POST-MATERIALIST - OUTFIT 3 - WIP



GONOE RUNWAY IN PRAGUE AT NUCLEUS EVENT (2023)

ALL OUTFITS HANDMADE BY ME AND MY FRIEND/CO-OWNER OF GONOE PATRIK PLATKO



PHOTOS BY ARTHUR KOFF

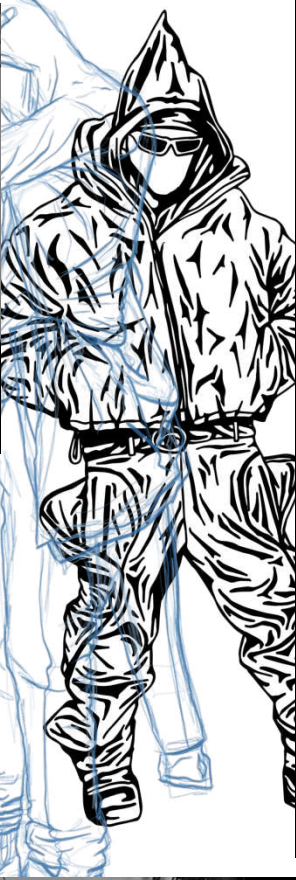
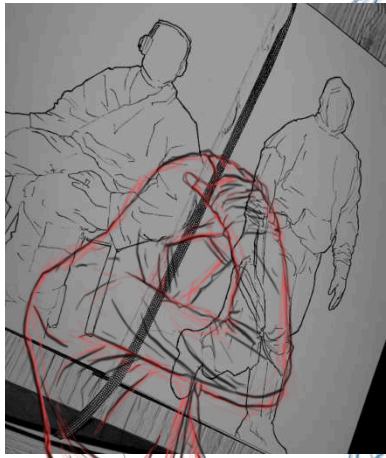
GONOE STUDIO PHOTOS



GONOE SHOE COLLABORATION WITH
ADIDAS AND DEPOP 2021
SHOES WERE DISPLAYED AT ADIDAS ORIGINALS FLAGSHIP STORE
IN CARNABY, LONDON



SKETCHES/DIGITAL ART



CADS



CONTACT ME

☎ 00729 514075

✉ MAX.BASALA17@GMAIL.COM

[LINKEDIN.COM/IN/MAX-BASALA-5B4A99200/](https://www.linkedin.com/in/MAX-BASALA-5B4A99200/)

📷 [INSTAGRAM.COM/MAXBASALA/](https://www.instagram.com/MAXBASALA/)

CONTACT GONOE

✉ INFOGONOE@GMAIL.COM

[LINKEDIN.COM/COMPANY/GONOE/](https://www.linkedin.com/company/GONOE/)

📷 [INSTAGRAM.COM/GONOE_/](https://www.instagram.com/GONOE_/)

