

THIS IS A MODERN SCREAM AT TODAY'S SOCIETY. INSPIRED BY THE DAMAGE GOING ON TO THE ENVIRONMENT, WITH A FOCUS ON OIL SPILLAGES SPREADING THROUGH THE OCEAN AND THE ASPECTS OF SOCIETY THAT ARE MISSING, ANTI-SOCIAL, AND SUPPRESSING THOSE WHO SHOULD BE SHINING FIGURES. THE AESTHETIC OF THE PROJECT AIMS TO PROMOTE MULTI-LOOK DESIGNS AND CREATE AN AWARENESS OF SUSTAINABILITY WITH A FUSION OF FUNCTIONAL UTILITARIAN ELEMENTS AND METAPHORICAL NODS TO FASHION ACTIVISM; THIS IS LUXURY WORKWEAR.

CHARLOTTE MAKINSON

Womenswear Designer
Project 1 - A Modern Scream
Project 2 - Diffusion (Capsule) Collection



charliemakinson@gmail.com

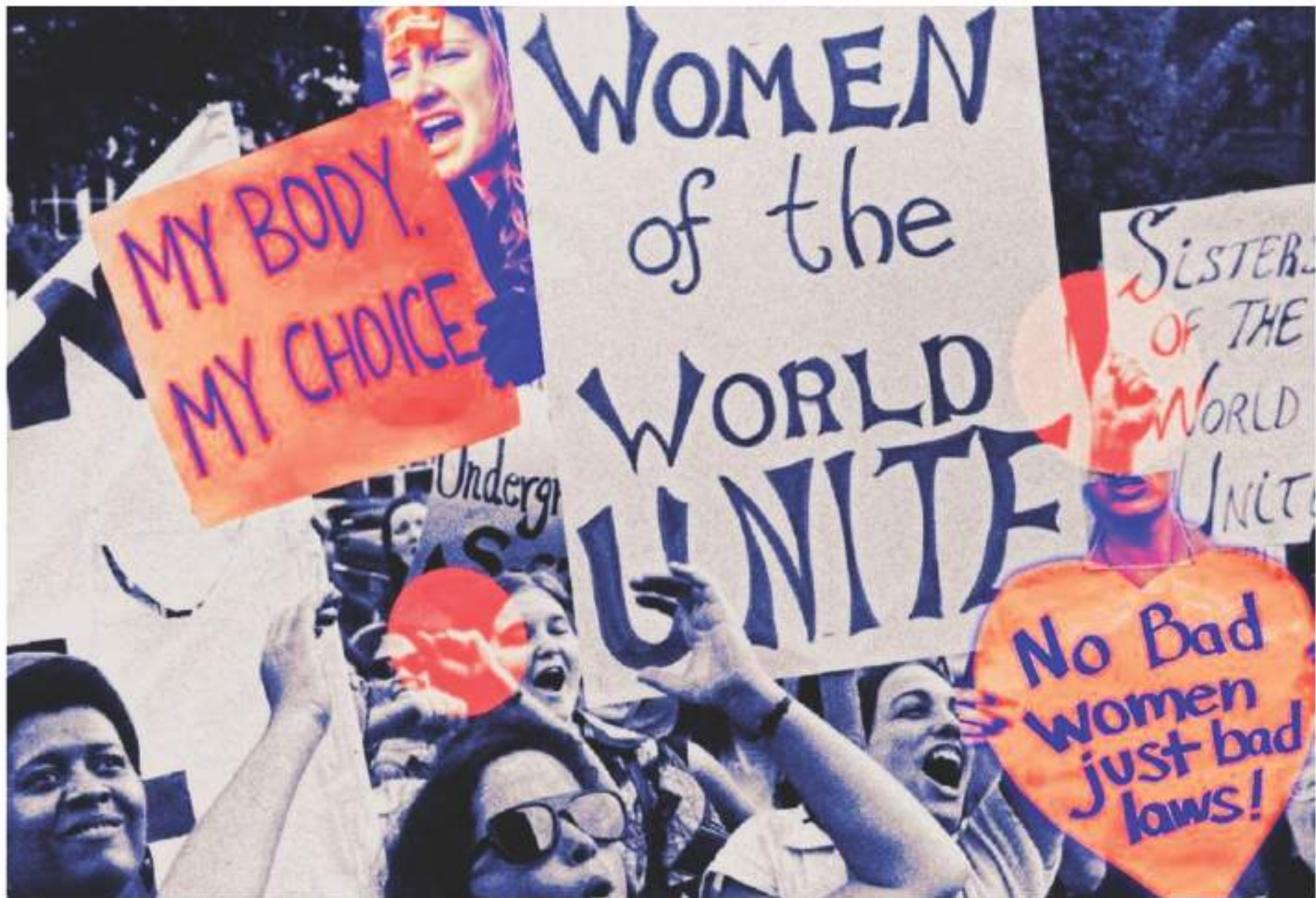


07701339624



www.linkedin.com/in/charlotte-makinson-6a3559282





MY BODY.
MY CHOICE.

WOMEN
of the
WORLD
UNITE

SISTERS
OF THE
WORLD
UNITE

No Bad
women
just bad
laws!

Undergr

MANMADE MODERNITY IS DESTROYING OUR NATURAL BEAUTIES

An aerial photograph of an oil rig in the middle of a dark, turbulent sea. The water is a deep, dark blue-green, with several bright green and red patches scattered across the surface, suggesting pollution or chemical spills. The rig is a complex of yellow and white structures, with a long platform extending from it. The overall scene is somber and industrial, contrasting with the natural beauty mentioned in the text.

- OIL IS POISON -



I predict a riot
 I predict a riot
 I predict a riot
 I predict a riot



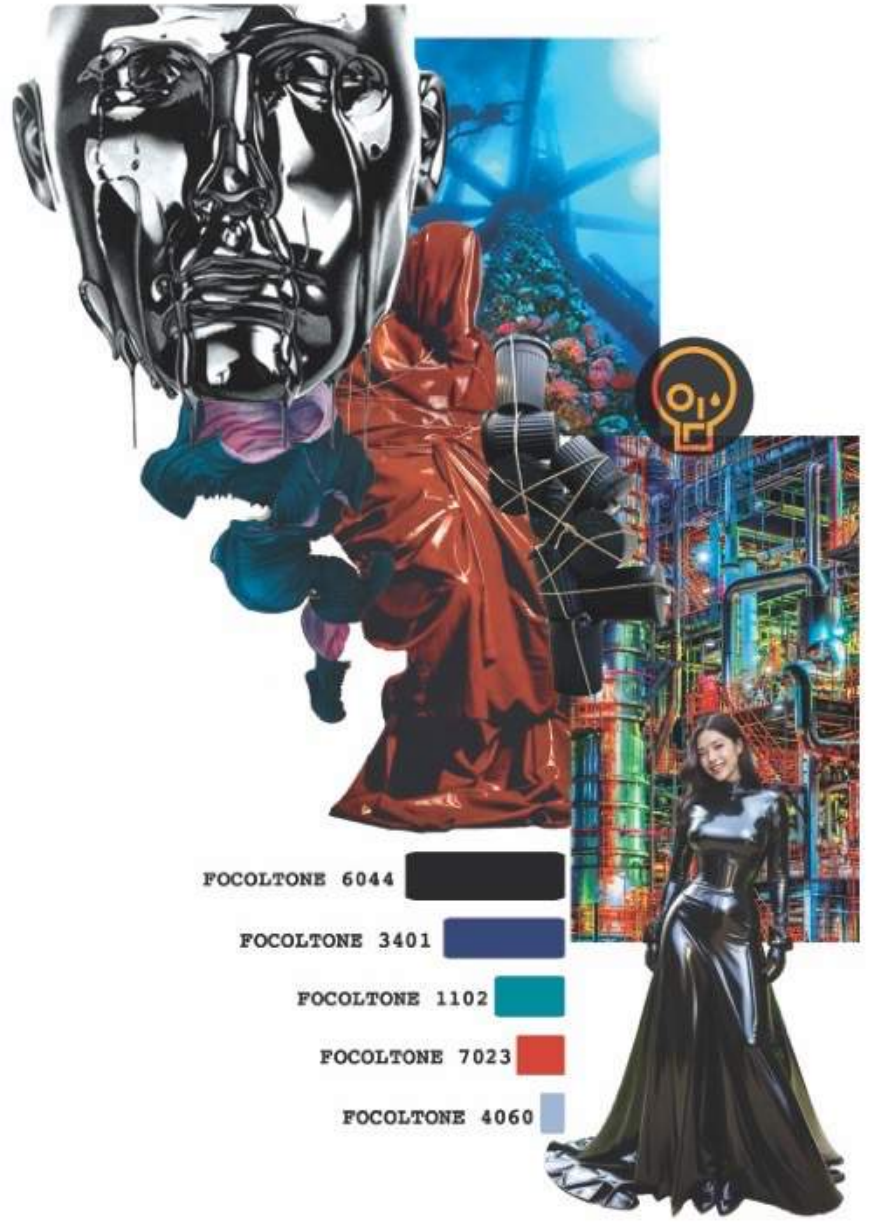


WELL BEHAVED WOMEN
RARELY MAKE HISTORY

CHARLOTTE MAKINSON



A MODERN SCREAM



FOCOLTONE 6044

FOCOLTONE 3401

FOCOLTONE 1102

FOCOLTONE 7023

FOCOLTONE 4060

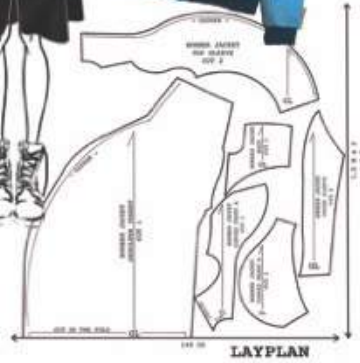
INITIAL HALF SCALE TOILES



CURVED GATHERED FRONT DEVELOPED



CONTESSA DUTCHESS POLYESTER SATIN COLOURWAYS



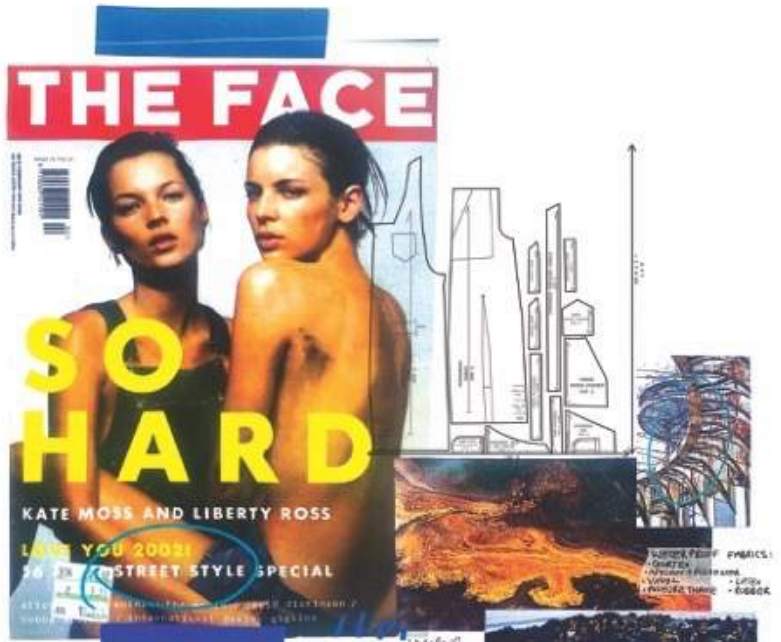
WRONG WILL DEFINE THE CURVE - MAKE THE SHAPE MORE BEAT

DRY HANGING TO STAY SHAPED INTO THE CURVE



KNOWLEDGE HINT: RISE WAISTLINE IN FRONT

FRONT PIECE



- SLEEVES ENLARGED
- RIBBED STORM CUFFS INSERTED USING FACINGS



- LOWER SILHOUETTE NEEDED OVERSIZING
- LARGE DARTS INSERTED INTO LOWER LEG FRONTS
- MORE FABRIC ADDED INTO SIDE SEAMS
- RECTANGULAR WORKWEAR STITCH TAB SEWN ON KNEE BACKS TO KICK LEG FORM BACKWARDS

- LARGE PATCH POCKETS ON LEG FRONTS
- WELT POCKET ON BIB FRONT WITH PROFILE STITCHING
- PATCH POCKET SEWN ON INNER BIB



- DROPPED SHOULDER AND RESHAPED ARMHOLE
- TRADITIONAL DENIM WORKWEAR PLEATS INSERTED IN FRONTS
- RECTANGULAR STITCH TABS SEWN TO KICK SLEEVES FORN FORWARDS
- CLASSIC POINT COLLAR SHAPE

DESIGN DEVELOPMENT

A MODERN SCREAM

- LENGTHENED TO ANKLE LENGTH



- SLEEVES ODOROMITICATED, BERRAPRO, ENLARGED TO CREATE 4 PINEE LANTERN SLEEVES FOR VOLUME
- BOWING ON MID-CLAVICLE EDGES TO HOLD SLEEVES SHAPED
- TUCKS AND RECTANGULAR STITCH TAPS ON SHOULDER TO ELITE TO BRACELLETTE
- VERY DENSELY



- HAIRYCORT ALTERNATIONS -
- BACK SHOULDER WIDENED TO GIVE DEPTH FROM THE FRONT
 - TUCK COLLAR BERRAPRO + BERRAPRO
 - FRONT (L) LENGTHENED
 - FRONT (R) POINTED
 - HIDDEN POPPER FASTENING



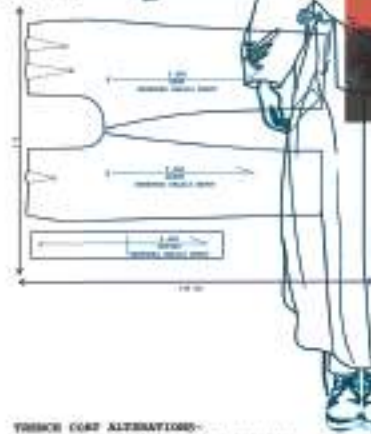
FLOW X STRUCTURE



She's just a girl and she's
Hotter than a fantasy, lonely like
She's living in a world and it's on
Filled with catastrophe, but she

Oh, ... she got both feet on the ground
And she's burning it down.
Oh, ... she got her head in the clouds,
And she's not backing down.

This girl is on fire! This girl is on fire!
She's walking on fire. This girl is on fire!



- YOUNG COAT ALTERNATIONS -
- PAPERBAG FEATURES CARRIED THROUGH
 - UPPER (R) BACK REDUCED + LOWER (R) BACK JOINED TO FRONT (R) FIBRE
 - LOWER (R) FRONT EXTENDED FOR PAPERBAG PLATING
 - YOUNG + PAPERBAG FACINGS CREATED AND ALL INSERTED INTO A JET + THE CE BERRAPRO



MY TAKE ON AN ACTIVIST T-SHIRT -
 'A WALKING METAPHOR FOR OIL SPILLAGES'
 - WET MOLDDED LEATHER BODICE SOAKED IN COLD WATER AND
 FREEHAND DRAPED
 - SEWN INTO RAGLAN CUT T-SHIRT
 - INSERT RIBBED NECKLINE

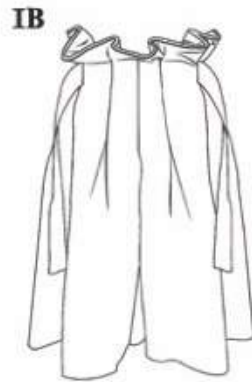


TAILORED TROUSERS BLOCK ALTERATIONS-
 - 20cm WIDTH ADDED INTO EACH LEG FRONT AND
 BACK TO ALLOW FOR 2 X 10cm PLEATS PER PIECE
 - 2cm ADDED TO WAISTBAND
 HEIGHT FOR PAPERBAG RUFFLES



- OUTER PLEAT OF EACH PIECE NOT SEWN IN BUT SEWN ONTO STRAPS
- BUCKLES ADDED TO EACH SIDE TO PULL PLEATS IN AND CINCH WAIST
- MEDIUM SIZED BUCKLE (4cm) SELECTED TO GATHER THE PAPERBAG RUFFLES THE PERFECT AMOUNT
- DOUBLE ENDED BUCKLE SELECTED WITH TWO STRAPS
- TOP EDGE PIPED AND FACED WITH MATCHING FABRIC (GINGER TAFFETA)
- LENGTH ADDED TO SKIM THE FLOOR

LOOK ONE



1A - SATIN BOMBER JACKET

1B - LEATHER PAPERBAG SHORTS

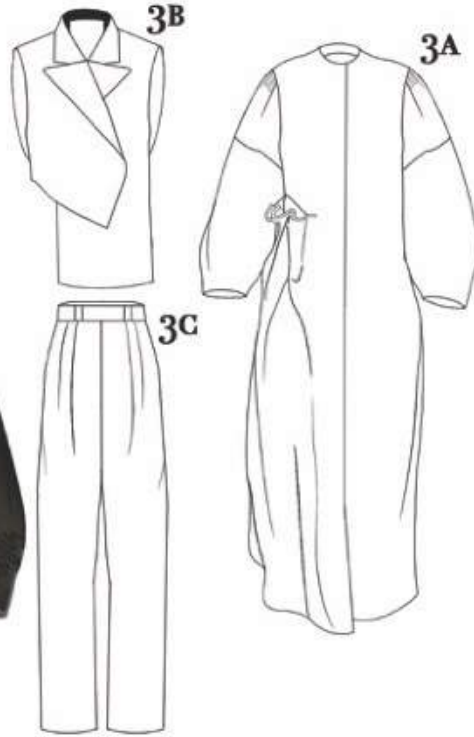
LOOK TWO



2A - COTTON/LYCRA WORKWEAR SHIRT

2B - DENIM DUNGAREES

LOOK THREE

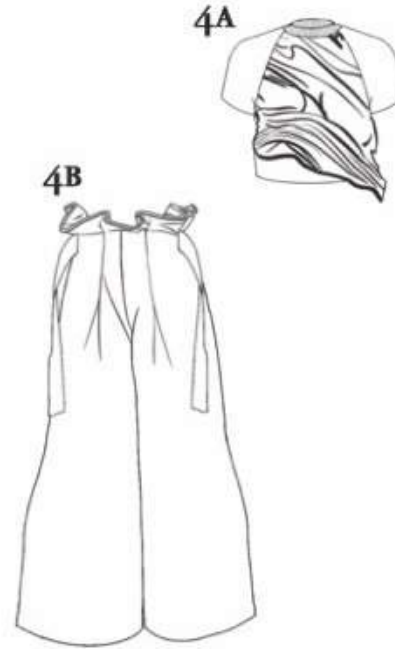


3A - COTTON DRILL WAISTCOAT

3B - PAPERBAG TRENCHCOAT

3C - FITTED TAILORED TROUSERS

LOOK FOUR



4A - WET-MOULDED LEATHER T-SHIRT

4B - DENIM PAPERBAG TROUSERS



