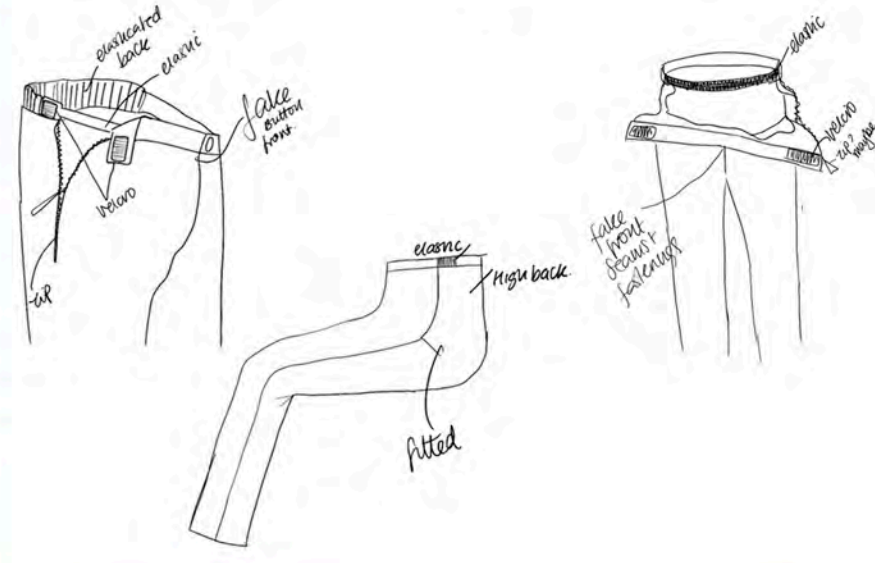
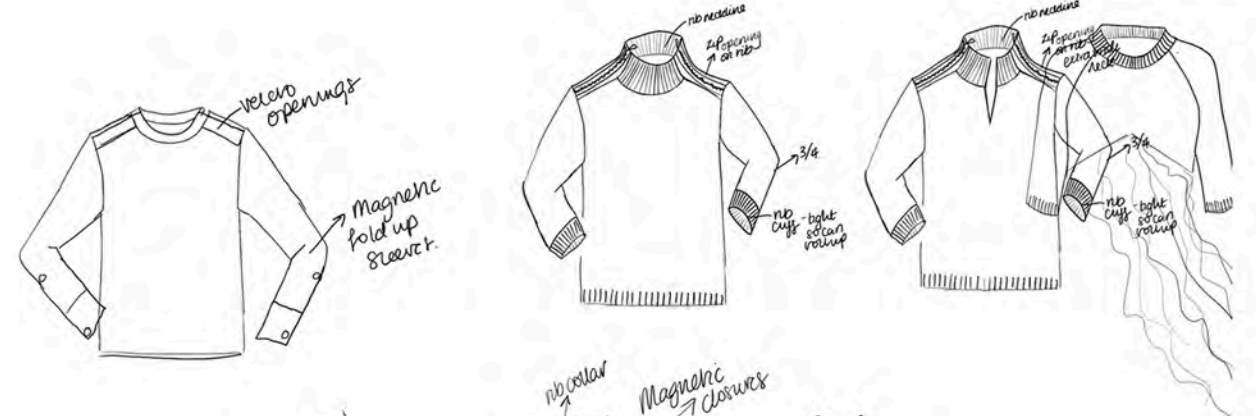
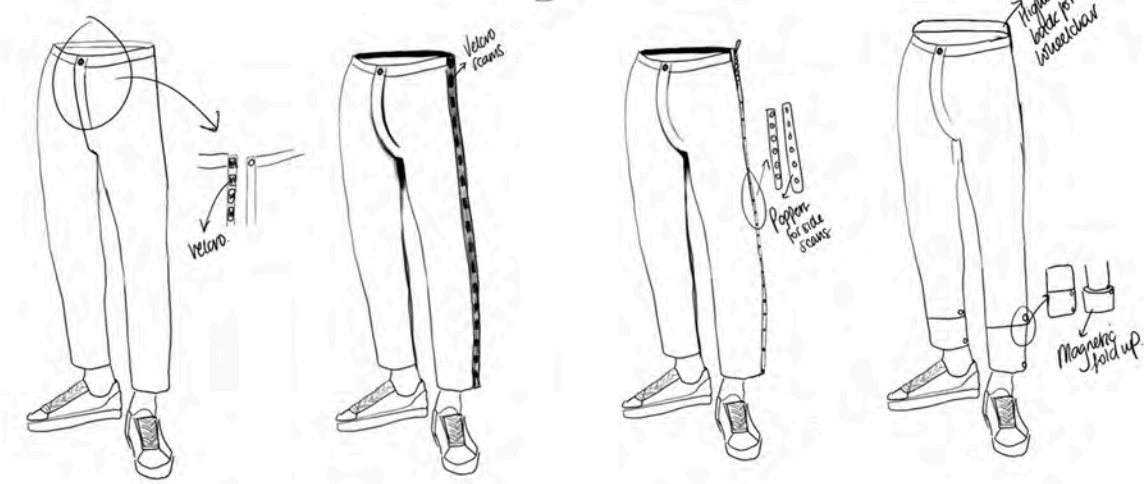
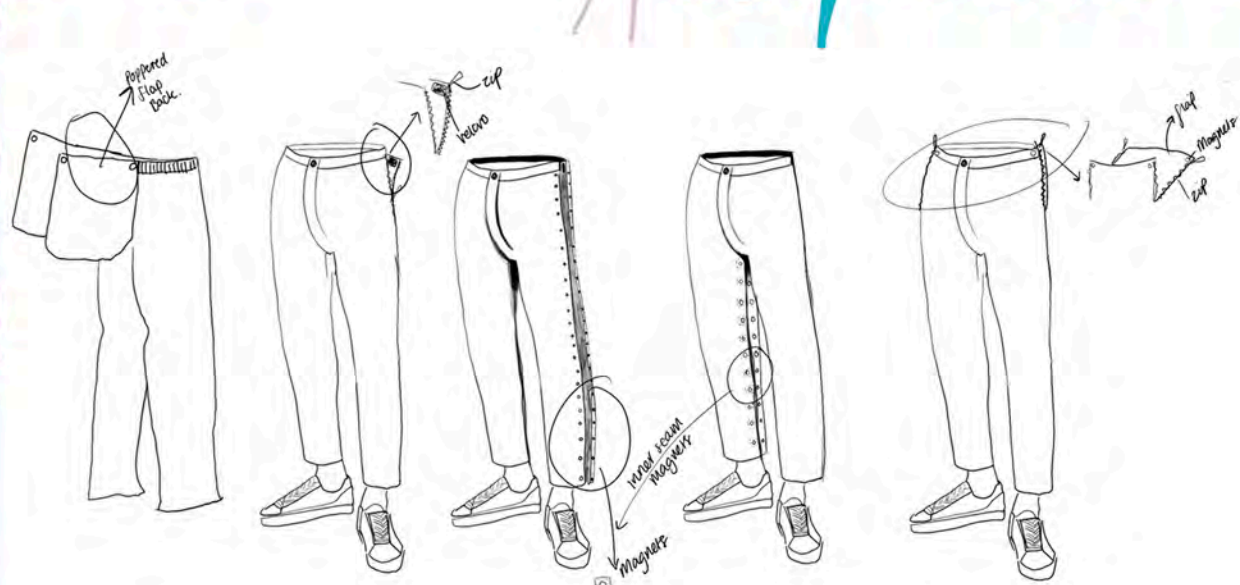




Crump, M., 2020 Chromat, 2020

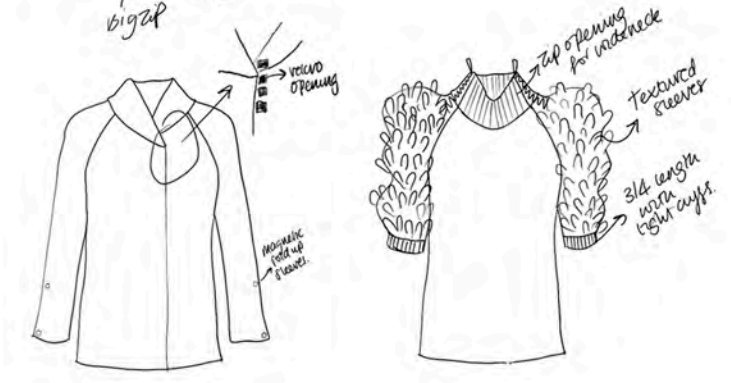
*Bermudayul
Adaptions
S/S 2022*

Adaption Considerations



Trouser Adaptors

- High backs for wheelchair users
- elastic + velcro + zips + popper fastenings
- magnetic openings
- Shaped seat design & high back use



Top Adaptors

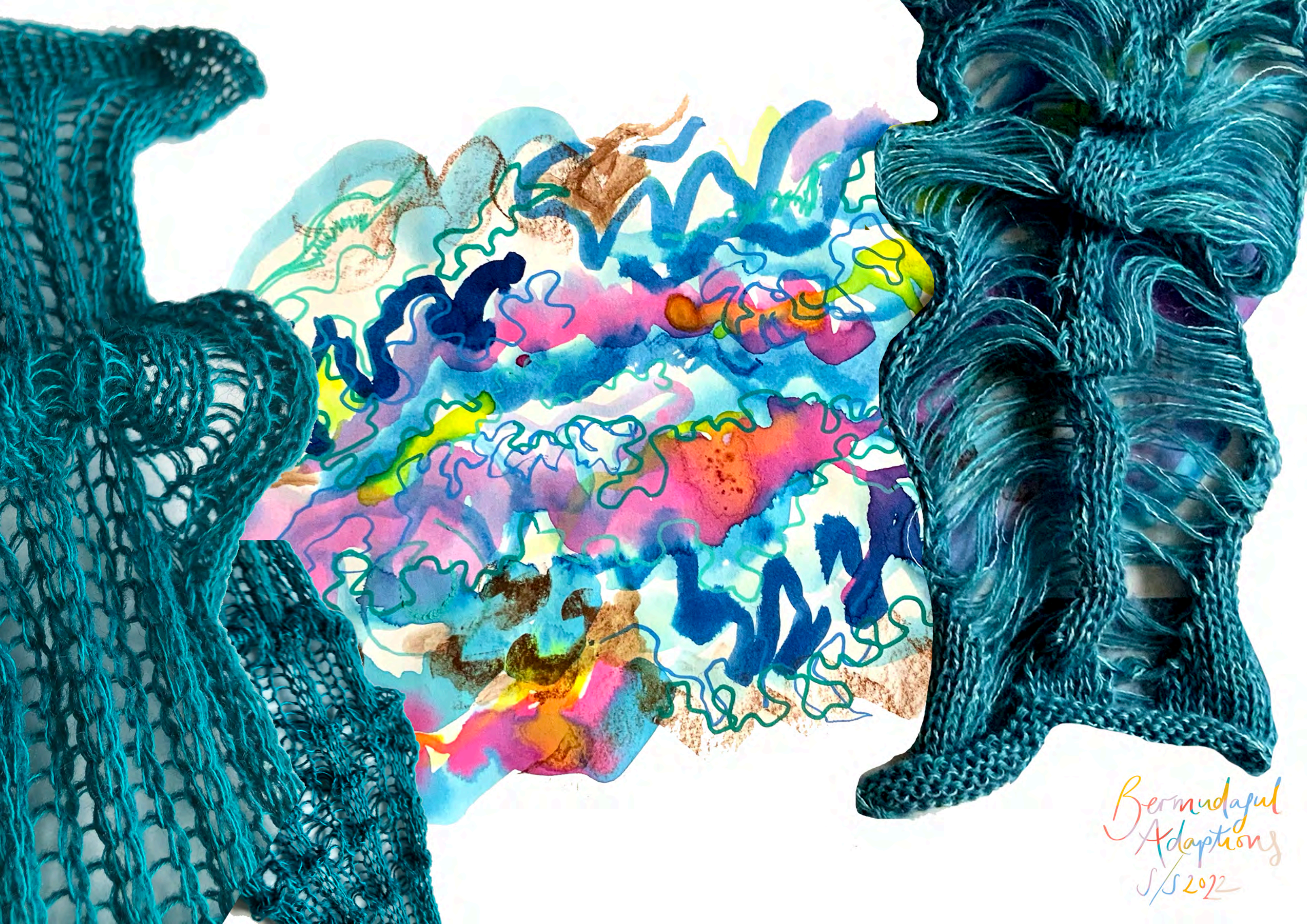
- wider neck openings for access
- 3/4 sleeves - so not too long / foldable up?

Bermudajul
Adaptions
S/S 2022

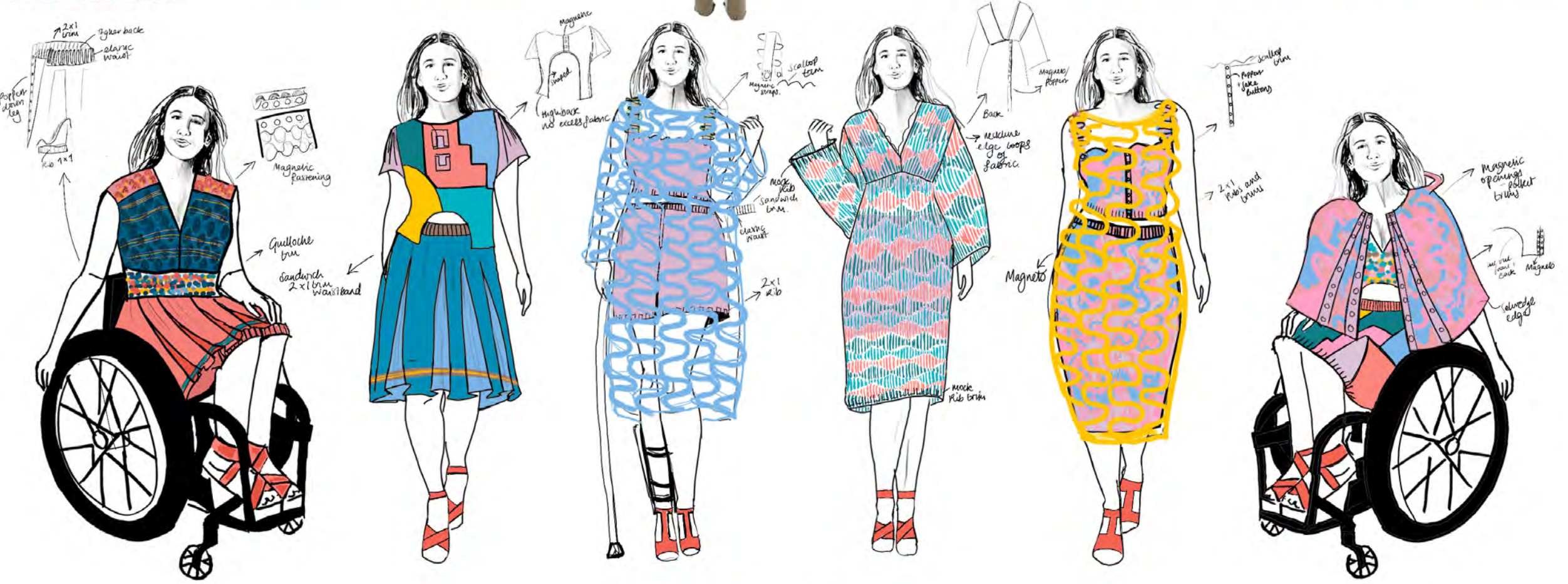
Colour Proportion



Bermudajul
Adaptions
S/S 2022



Bermudajul
Adaptions
S/S 2022



1

2

3

Bermudajul
Adaption
1/5/2022

4

5

6

Gemma
Tyte