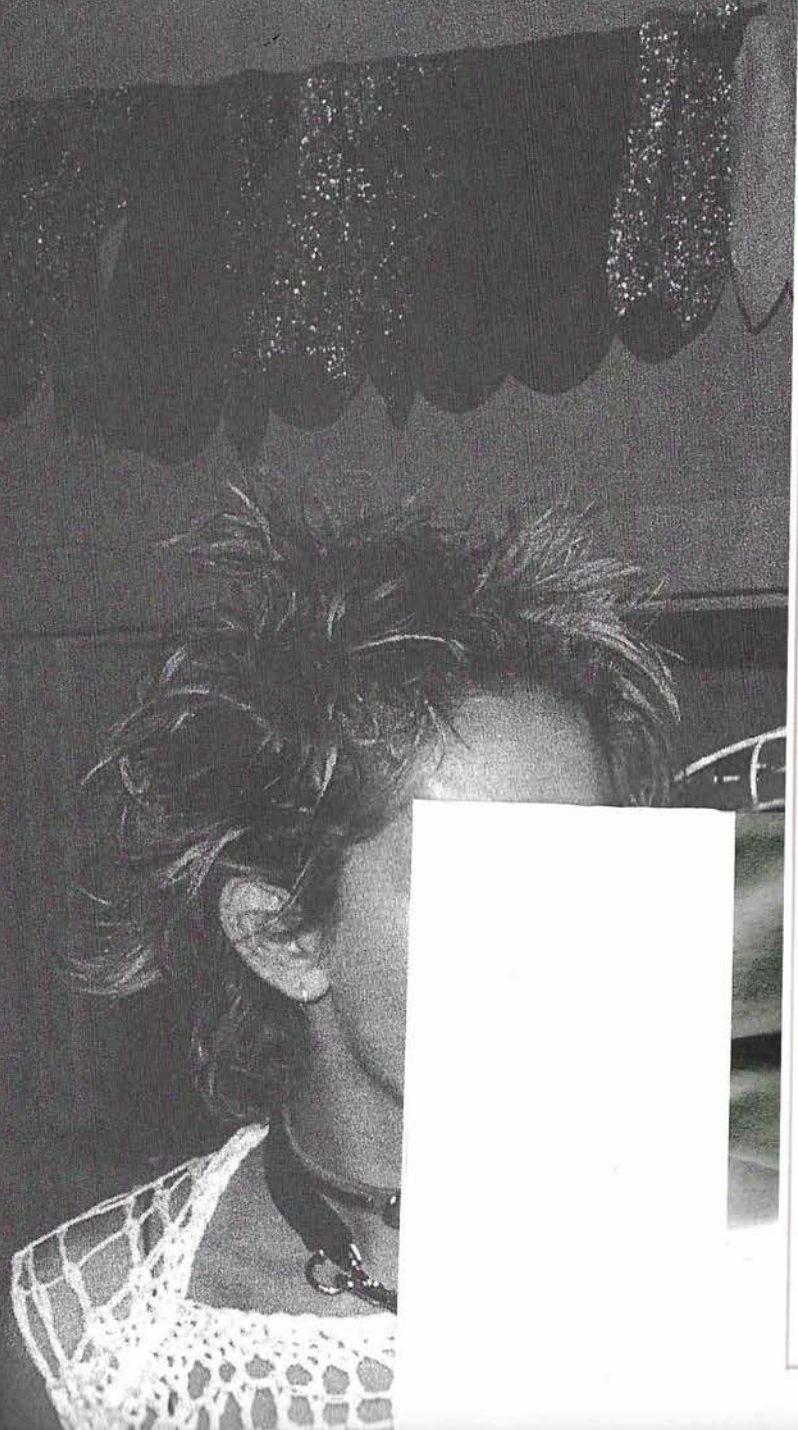
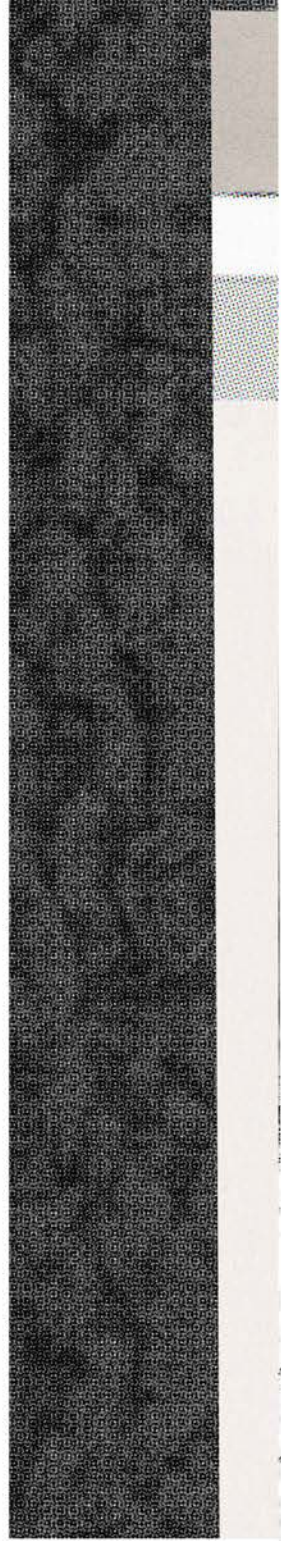




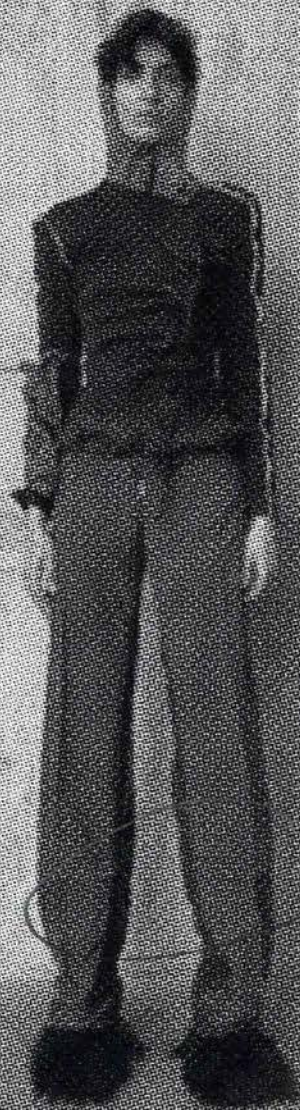
HOODED SWEATSHIRT BY CHAMPION.
OPPOSITE PAGE: HOODED SWEATSHIRT BY
CHAMPION, HOODED SWEATER BY STUSSY,
BRA BY AMERICAN APPAREL.





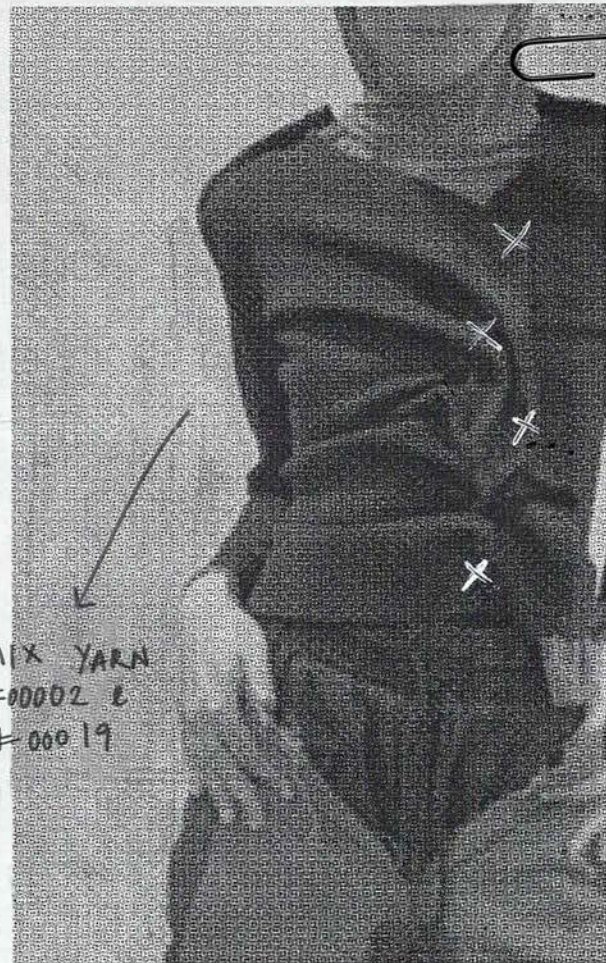


HAND STITCHING
IN YARN #00015
TO LINK
↑ TOGETHER



CONVERTIBLE
TROUSERS

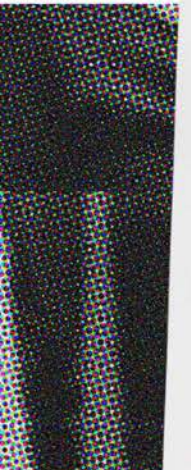
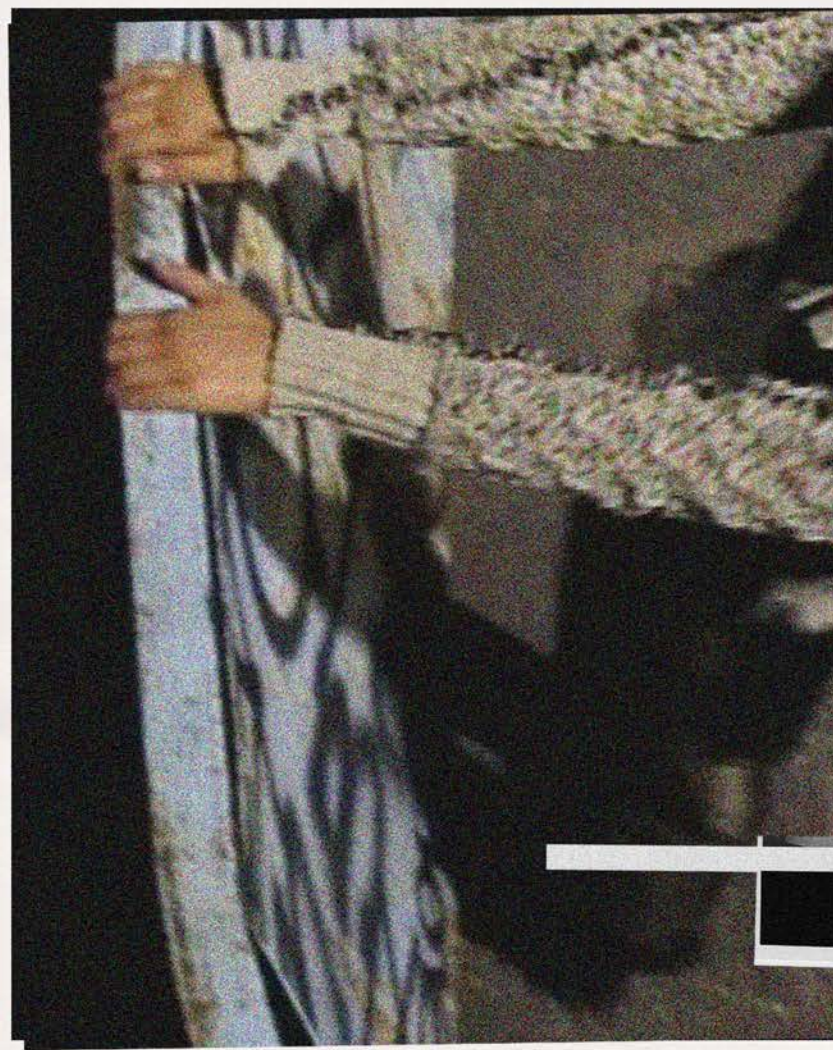
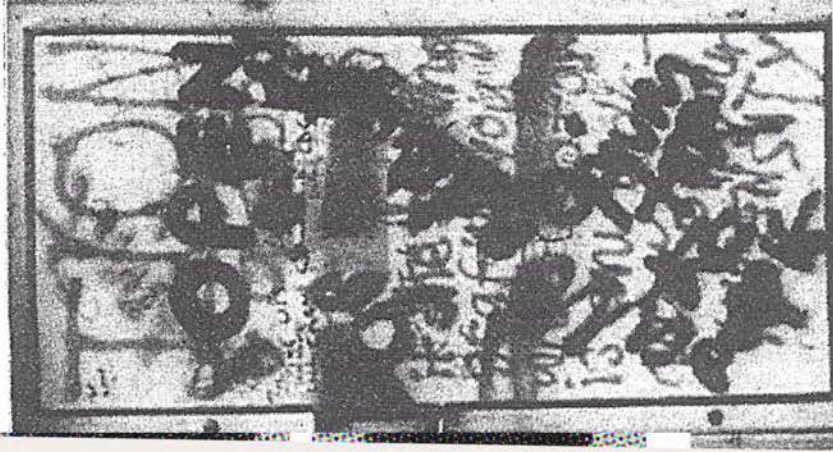
+ HEM WITH
HEM



MIX YARN
#00002 L
#00019



STELLE
LUZ S.
EME; T.
.A; CA





REMOVE SEAM FROM
BACK OF ARM



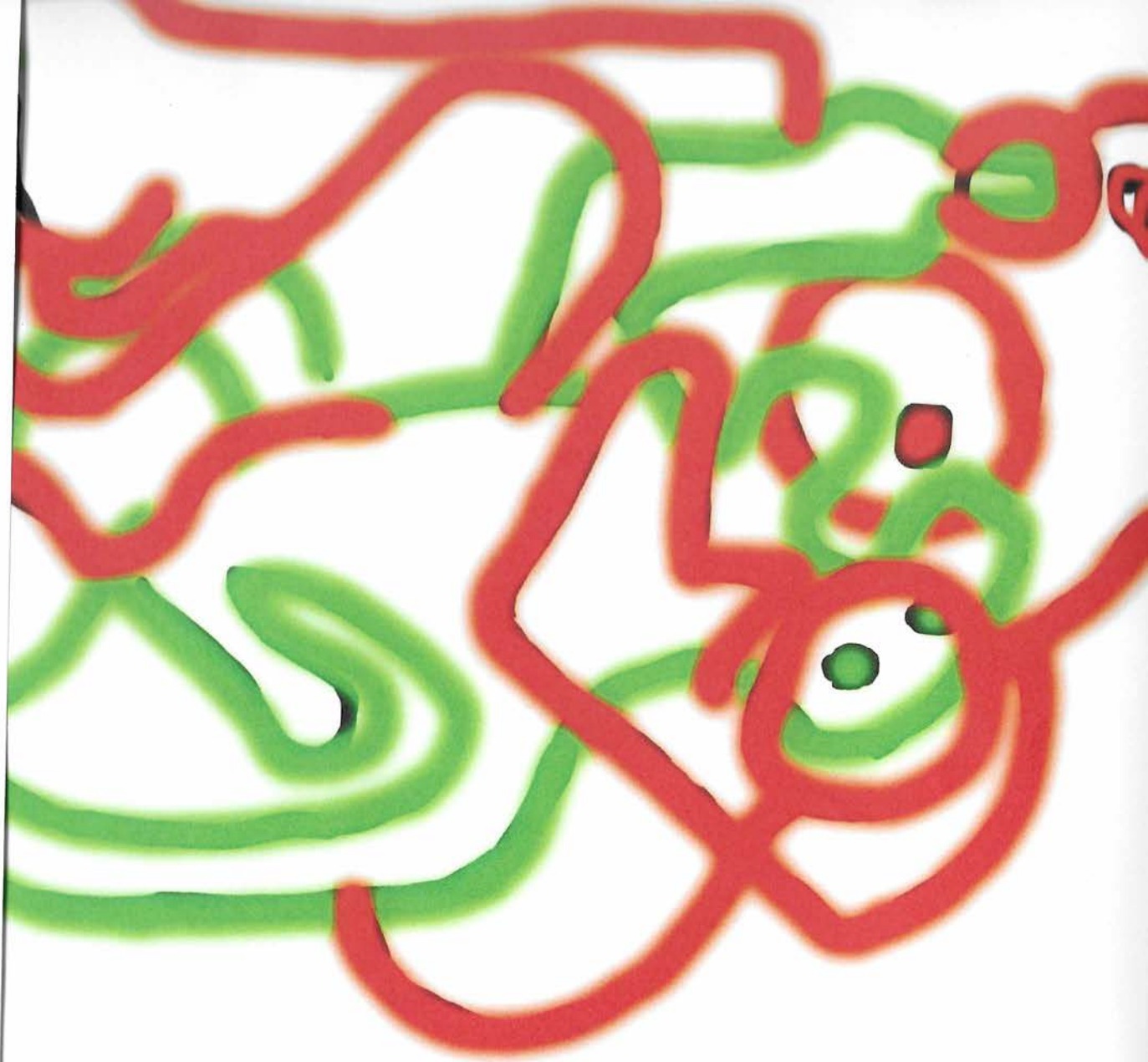
MOVE SEAM
TO THE RIGHT
18 CM.

CHANGE DRAP
ON SHOULDER SO
IT HANGS LOWER.

THUMB HOLE?

HAND LINKED
CONTRACT TRIM





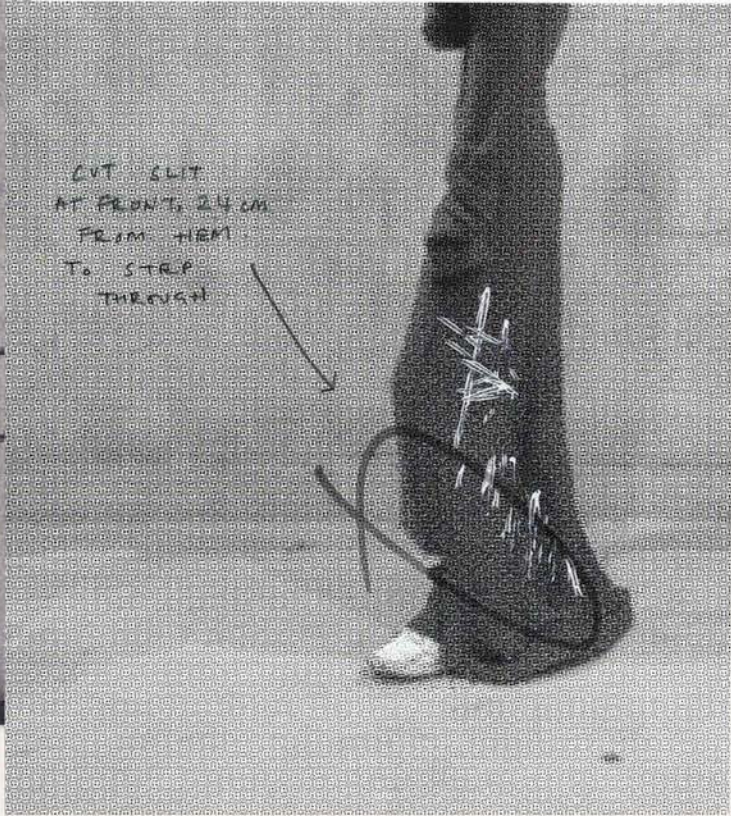
photography by Zoe Gherlner, styling by Marie Chaux

MODELS ALBANE GHEISELINCX AT WOMEN MANAGEMENT; FARETTA, ESTELLE CHEN, MARIE VENTURI AND LUNA WU AT ELITE;
MARAIIII AND KATHIA AT NEW MADISON; MARIAM DE VINZELLE AND LUE SANCHEZ AT VIVA; GERDA NIC, ANASTASIA KUZNESOVA,
GIDRE SEKS, MARIANA HUMENIUX AND HOLLY SHERMAN AT SUPREME; TINA KUNAKAY, IEN WEXKING AND MAYA BASTIANELLI AT
ILLET AT SILENT; NATA AT WILHELMINA L.A.; ARI FITZ AT FORD L.A.; CARLA SOPHIA, ALEXA RYAN, EMMA RISKIN, ELAINE CARILLI
ILIA DUCASSE AT VISION MODELS; ALGO BREHANE AT PHOTOGENICS L.A. PARIS TEAM: HAIR BY SEBASTIEN RICHARD AT JED FOOT-
STANT CASSANDRA BICKMAN, STYLIST'S ASSISTANTS KAT IOZHNIKOVA, PATRICK RAMMELKAMP. PRODUCTION CONNECT THE DOTS.

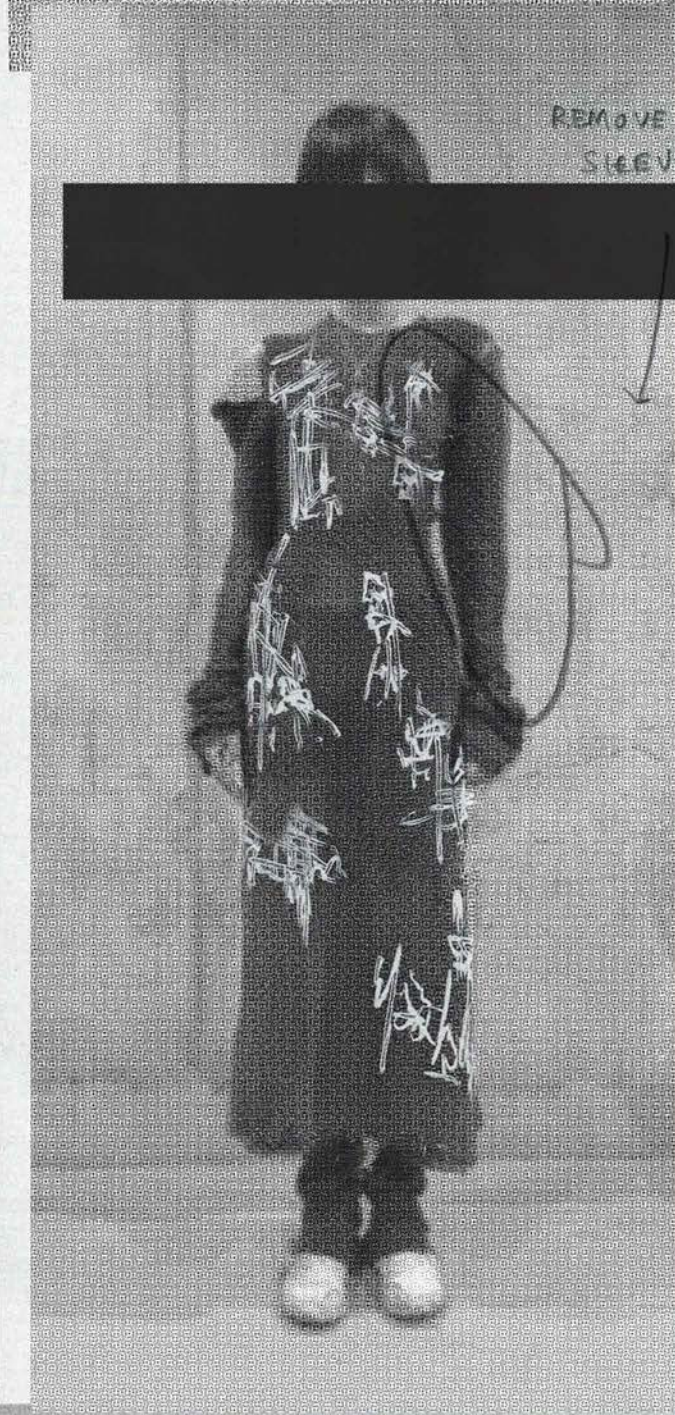




— EXPERIMENT, W/
PARTIALLY LINKING
OPENING AT FRONT



CUT SLIT
AT FRONT, 24 CM
FROM HEM
TO STRAP
THROUGH



REMOVE LEFT
SLEEVE



... Jones — p
... rather jact
... y on his fre
... with flatter
... often prom
... a mania. "I
... sure for pe
... is local in
... ant still rev
... sion, design
... as, artists.
... . Accelerat
... ages that

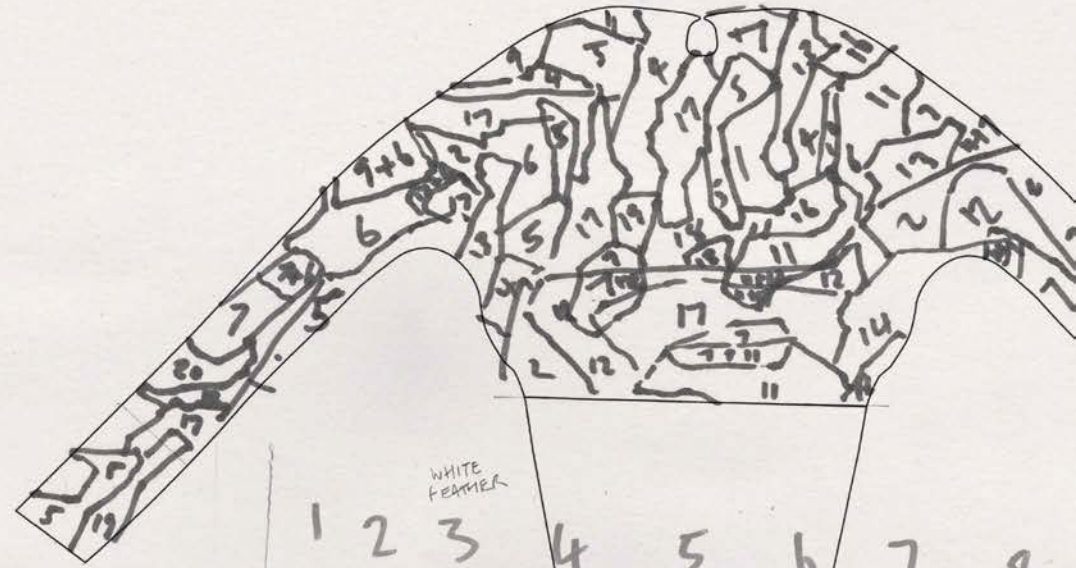
... ation and
... id upon. En
... rnement—t
... reate its o
... k music be
... sion, which
... id are relat
... nd to envic

... ven from o





WEAVING THROUGH
JUMPER



1 2 3 4 5 6 7 8

WHITE
FEATHER

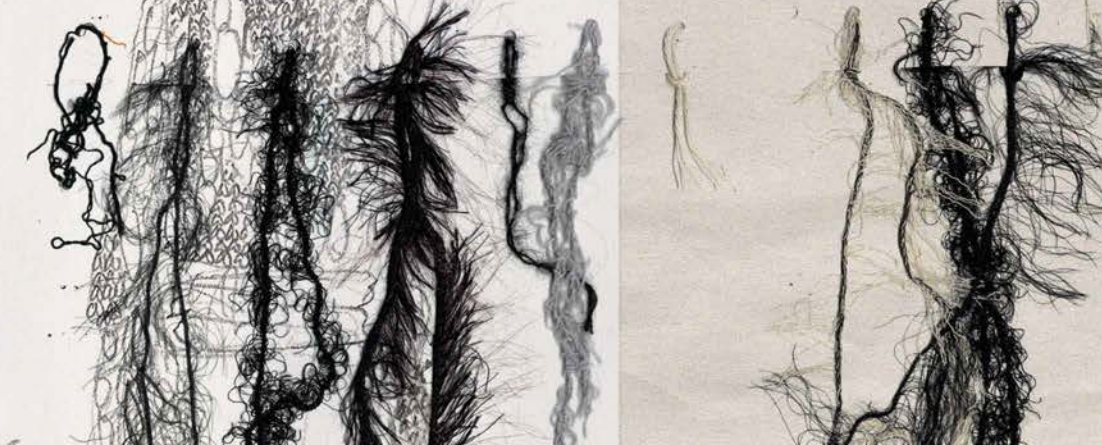


BLACK
FEATHER

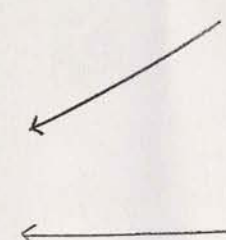
4.4

11 12 13 14 15 16 17 18 19 20 21

GREY
FEATHER



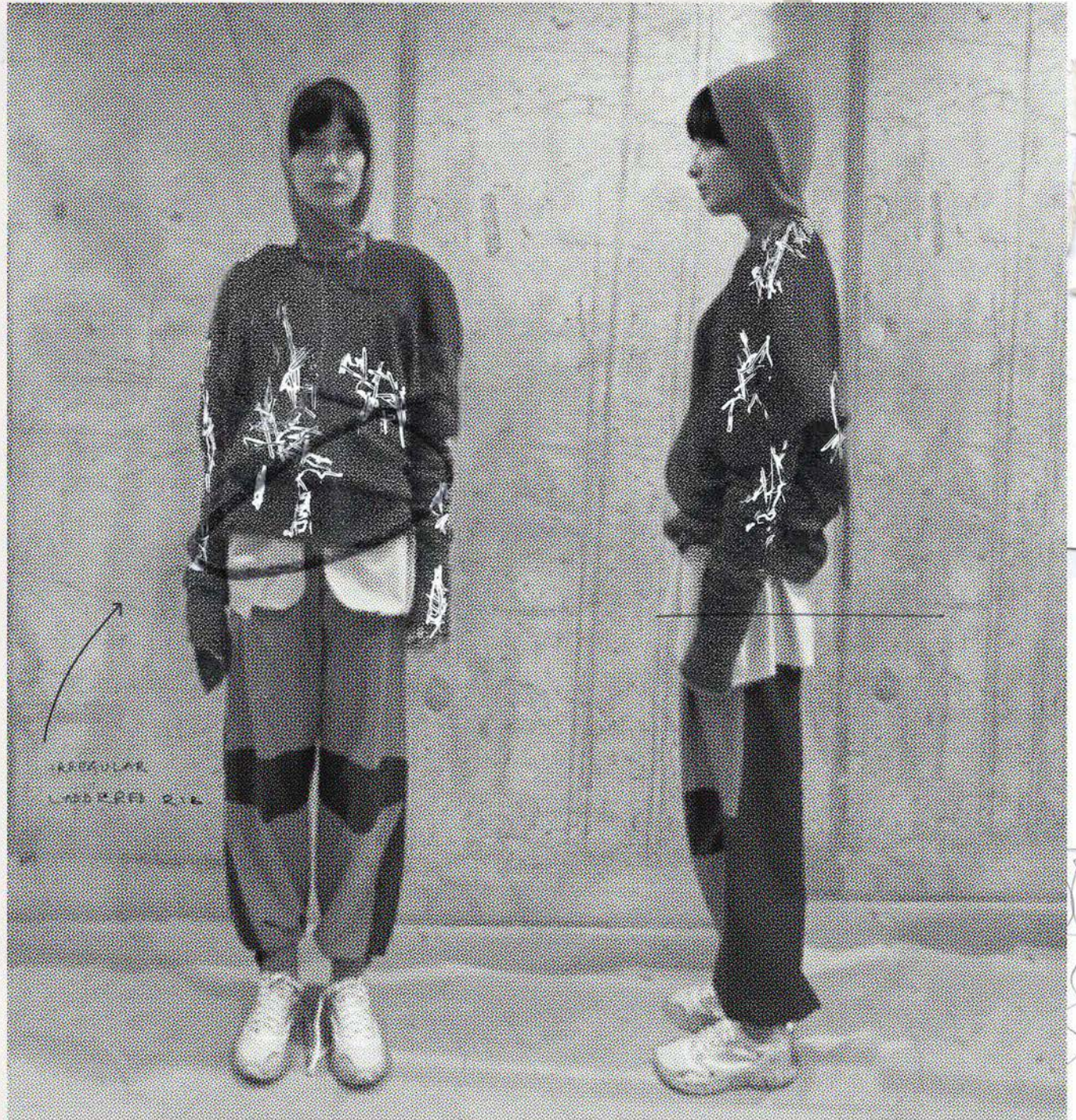
DROP WAIST
GATHERING



SUPER LONG

ARM ...





Color &
material color
may be more so same

DRAWSTRING SHORT
LINING



DROP WAIST

EXPERIMENT W/
DARTS AT KNEE
TO CREATE SHAPE.



CONTRAST STITCHING
AROUND PANELS.



EITHER ZIP OFF
OR TOSSE
DETAIL









FEATHER

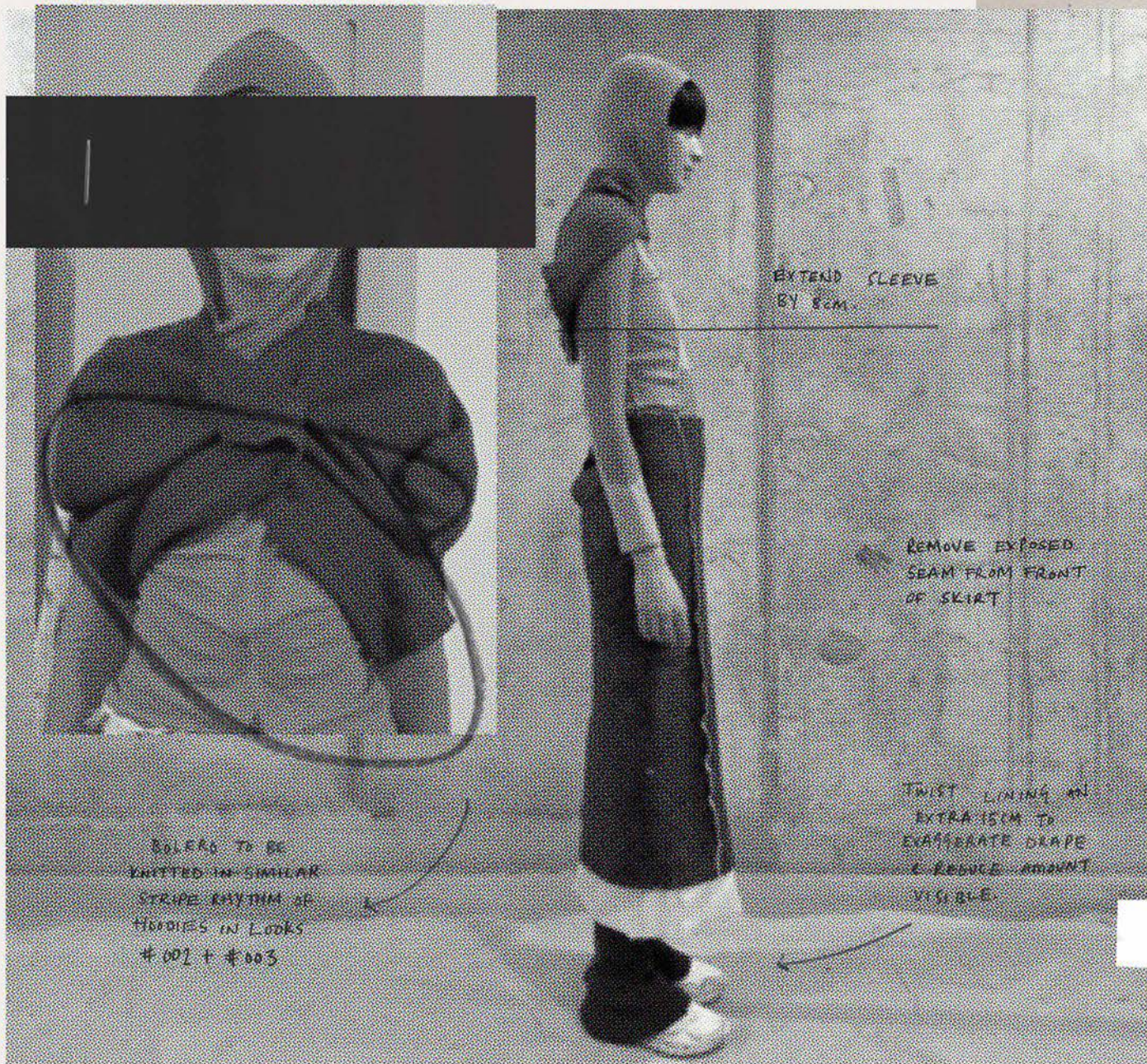
ANGORA

MOHAIR

ROPE

WOOL





EXTEND SLEEVE
BY 8cm.

REMOVE EXPOSED
SEAM FROM FRONT
OF SKIRT

TWIST LINING AN
EXTRA 15CM TO
EXAGGERATE DRAPE
& REDUCE AMOUNT
VISIBLE.

BOLENS TO BE
KNITTED IN SIMILAR
STRIP RHYTHM AS
HIDDIES IN LOOKS
#002 + #003



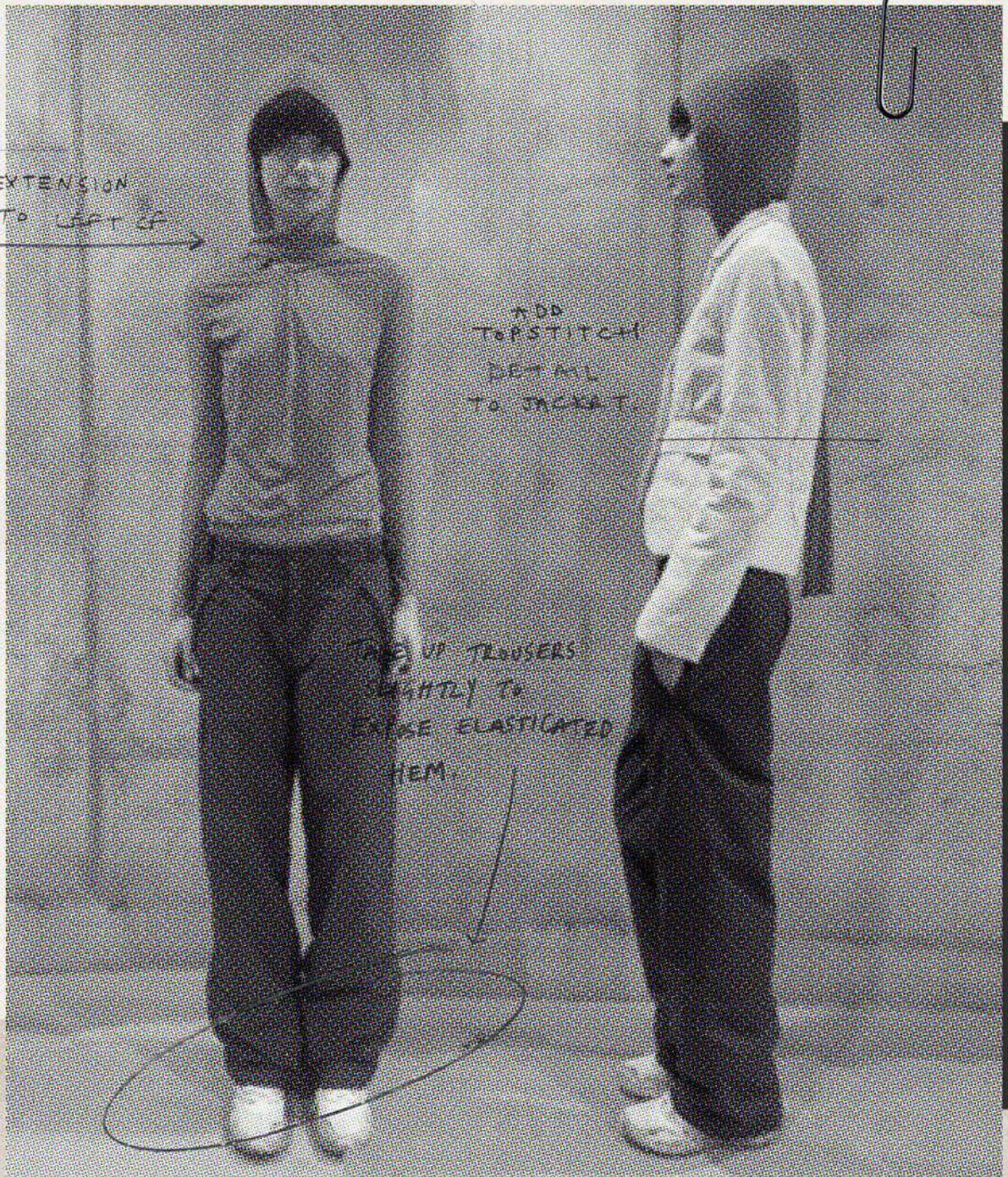
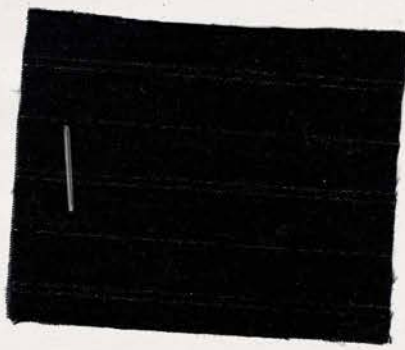


SCARF EXTENSION
ADDED TO LEFT CF



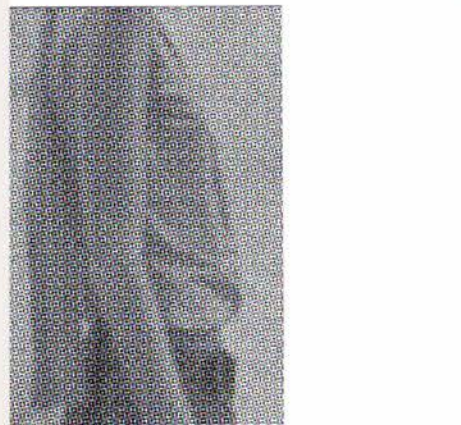
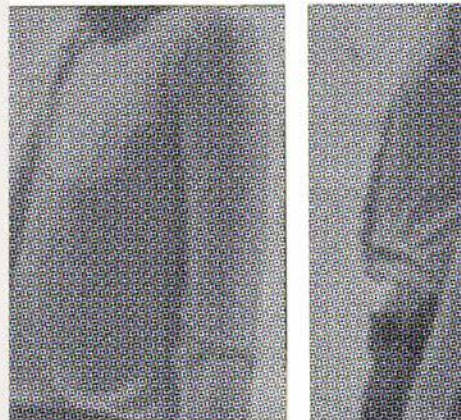
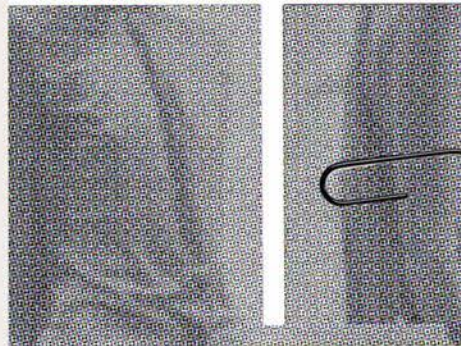
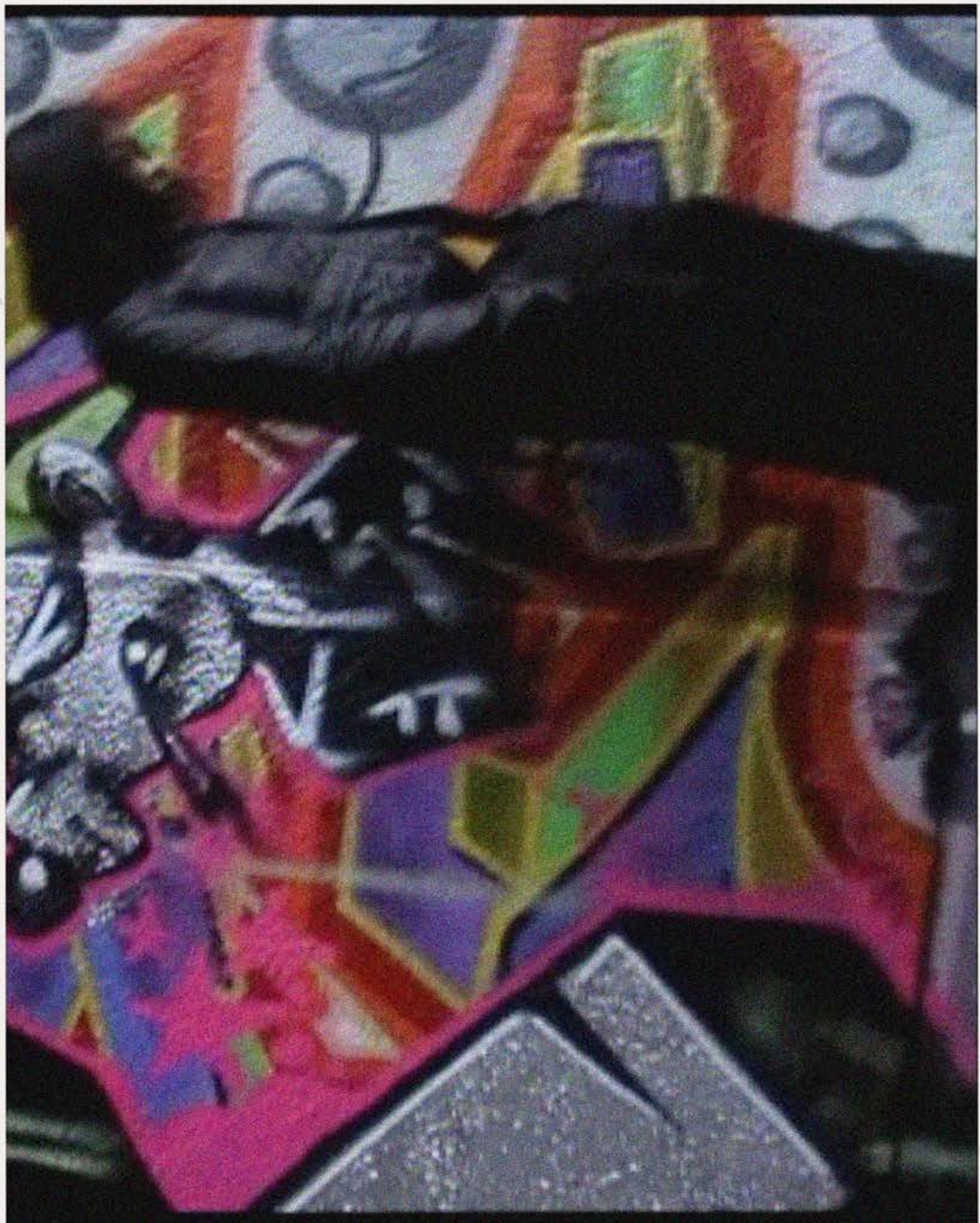
ADD
TOPSTITCH
DETAIL
TO JACKET

TAKE UP TROUSERS
SLIGHTLY TO
EXPOSE ELASTICATED
HEM





11



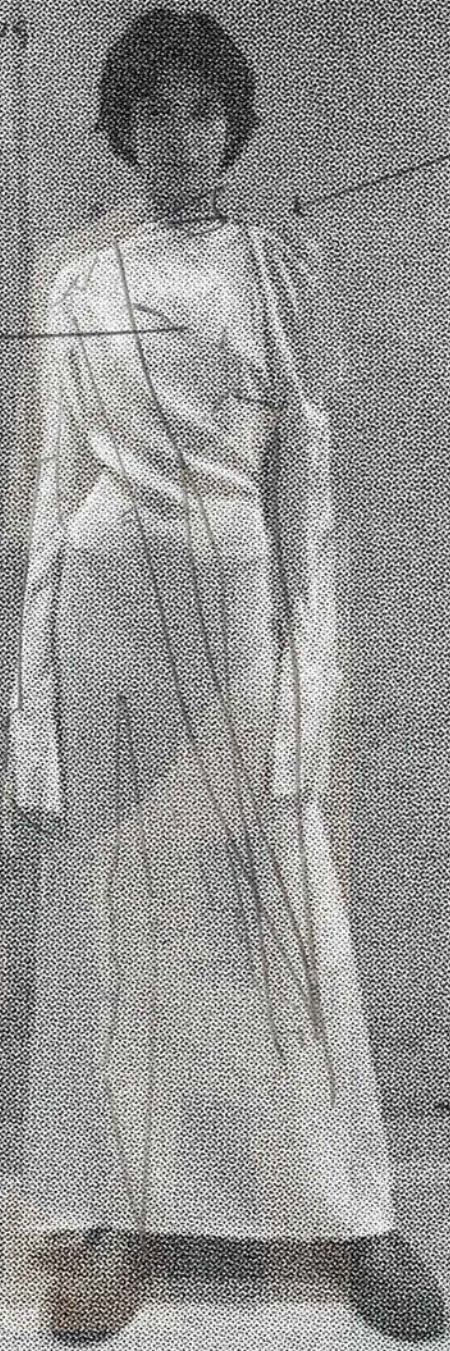
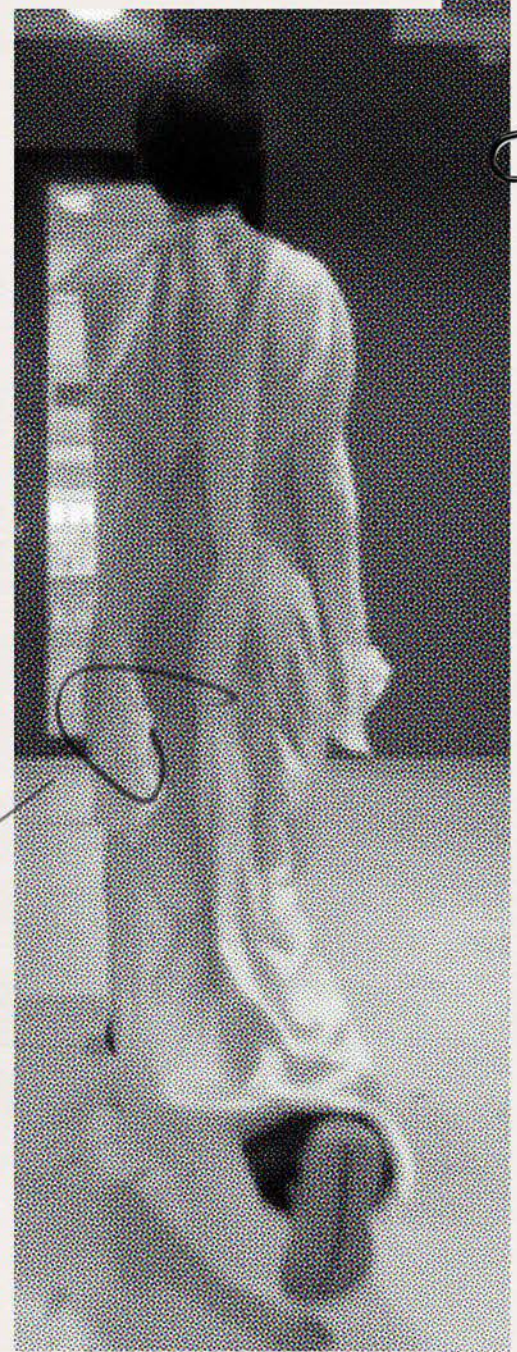
— PRINT DESIGN TO
BE CREATED BY COLLAGING
MY FABRIC SCRAPS

AND LONG SCARF
DETAIL TO
NECKLINE.

DROP SHOULDERS
4cm

ASYMMETRICAL
BUTTONED
PLACKET

OPEN HEM
15 CM



Maison Martin Margiela
Spring/summer 1990
P.O.F. Autumn/winter 2010
Photo by Hellen van Meirne



BAG DESIGN
RENDERS →

PRINTS WERE MADE
FROM PHOTOS I
TOOK ON LOCKDOWN
WALKS ~~AND~~ BY
THE CANAL.





