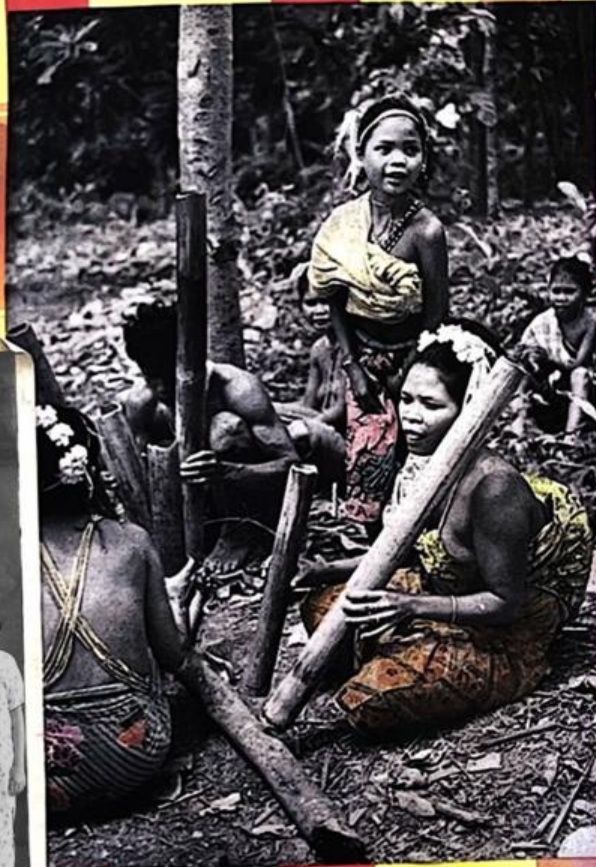




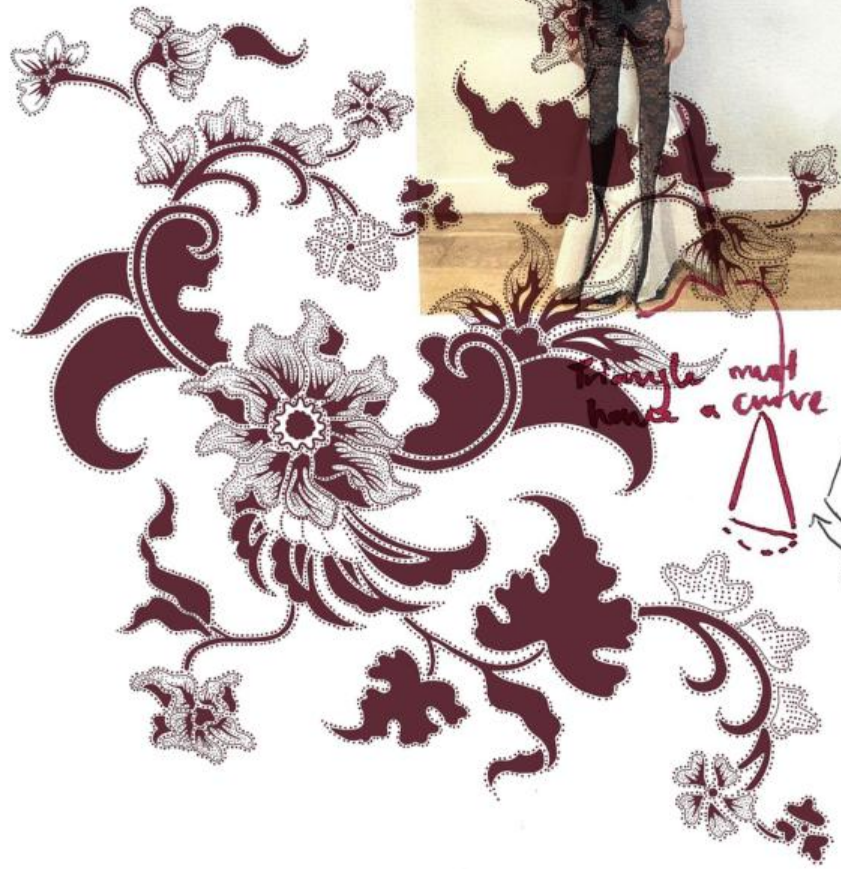
Campur the word for 'mix'



Campur
by Phoebe Wang



Campur
by
Phoebe Wong



neck is smaller!
too flat on the back



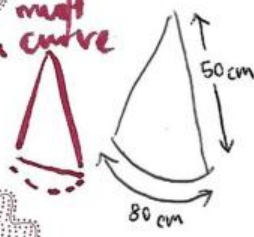
Cut strips thinner!
Raffia strips fabric glue.



Cut shorter

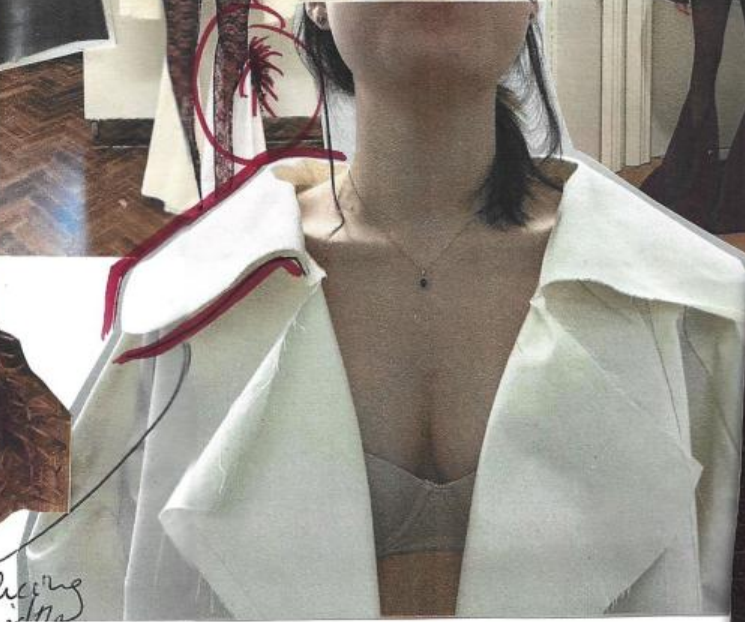


triangle must have a curve



Make print longer

after reducing the width around the collar.



Campur

by Phoebe Wang



No. 224 MALAY WOMAN, PENANG

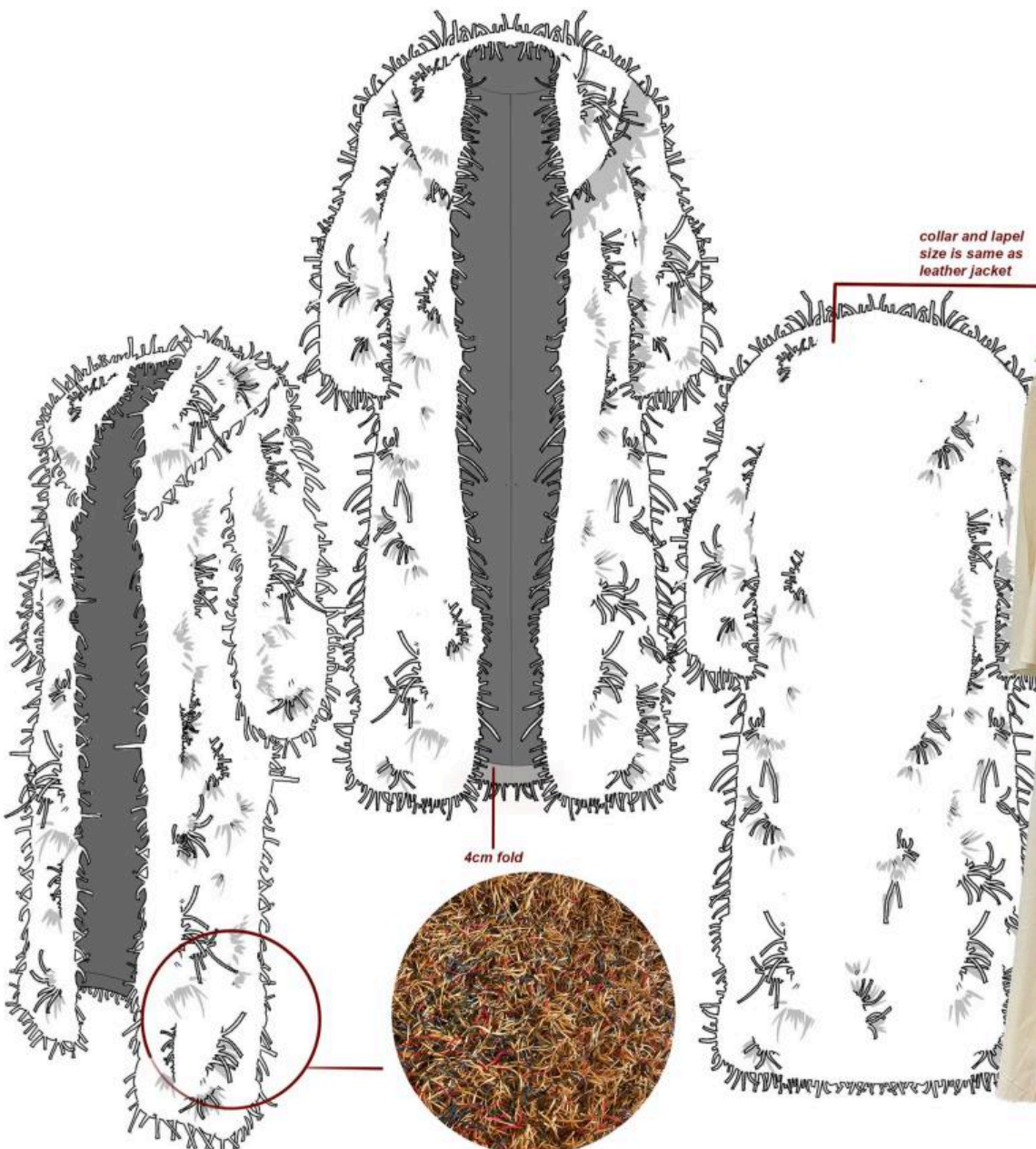
Campur
by
Phoebe Wong



Campur
by
Phoebe Wong



Campur
by
Phoebe Wang



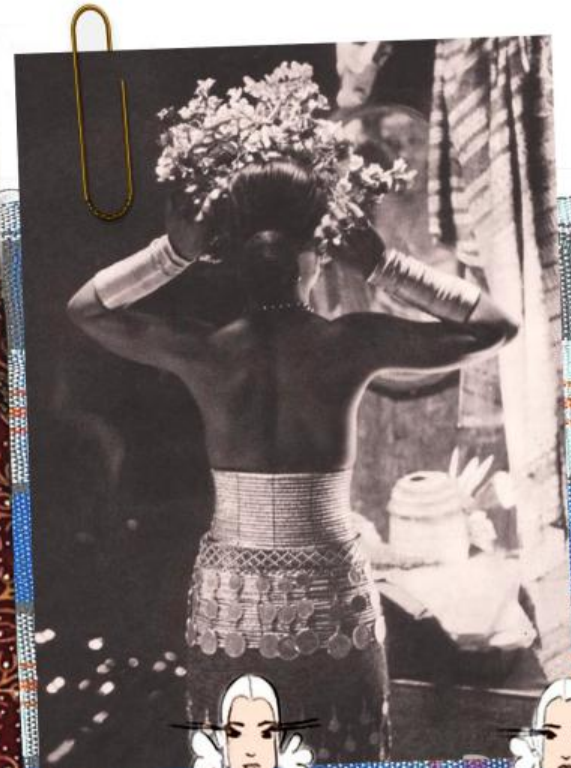
collar and lapel size is same as leather jacket



Campur
by Phoebe Wang



Campur
by
Phoebe Wang



Campur
by
Phoebe Wong



Campur
by
Phoebe Wang



Campur
by
Phoebe Wong



Campur
by
Phoebe Wong



Campur
by
Phoebe Wong



Campur
by Phoebe Wong



Campur
by
Phoebe Wong