



C  
o  
l  
o  
u  
r  
a  
n  
d  
f  
a  
b  
r  
i  
c  
a  
t  
i  
o  
n



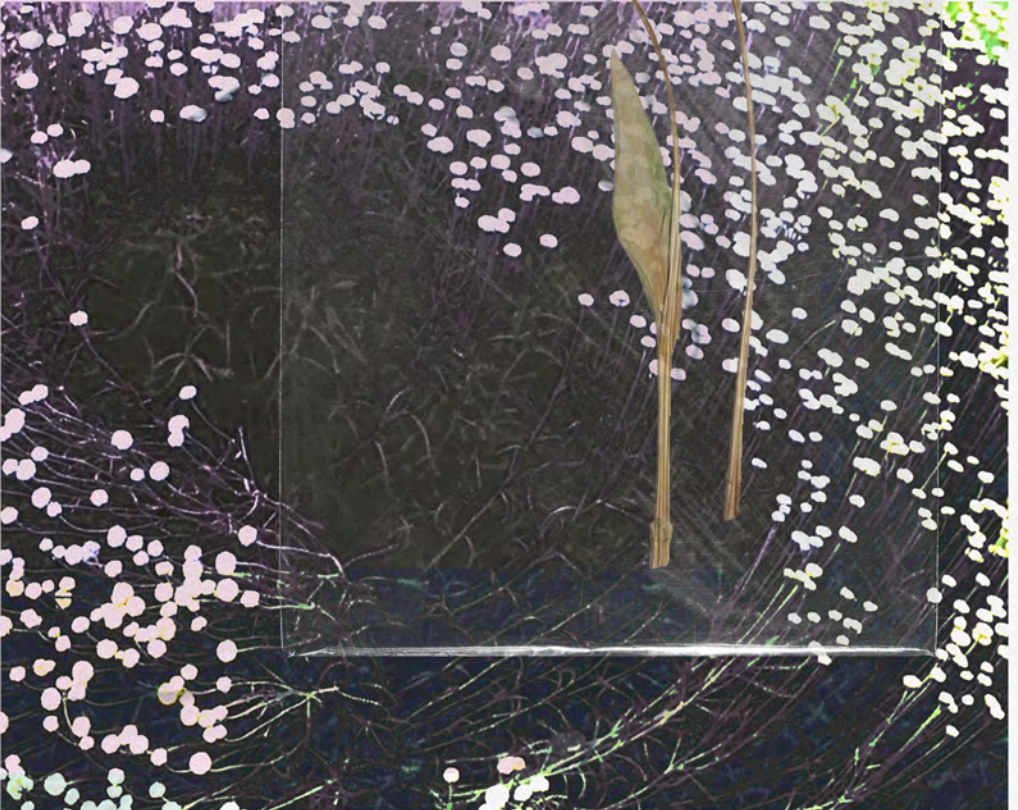
If I had a flower for every time  
I thought of you, I could walk  
in my garden forever.



M  
o  
o  
d  
a  
n  
d  
i  
n  
s  
p  
i  
r  
a  
t  
i  
o  
n



D  
r  
e  
n  
c  
h  
e  
d  
i  
n  
c  
o  
l  
o  
u  
r  
a  
n  
d  
l  
i  
g  
h  
t



In The Light  
Of Equinox



In The Light  
Of Equinox

LOOKS  
DESIGNED  
FOR  
EVENING  
EVENTS  
SUIT

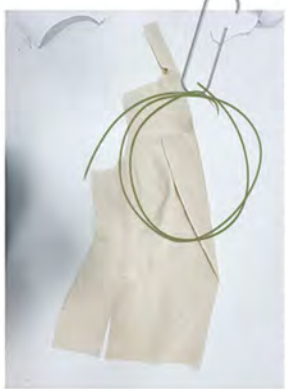
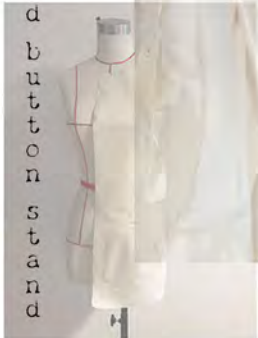


ILLUSTRATION  
LAYER



FLAKEY  
CHIFFON  
BACK



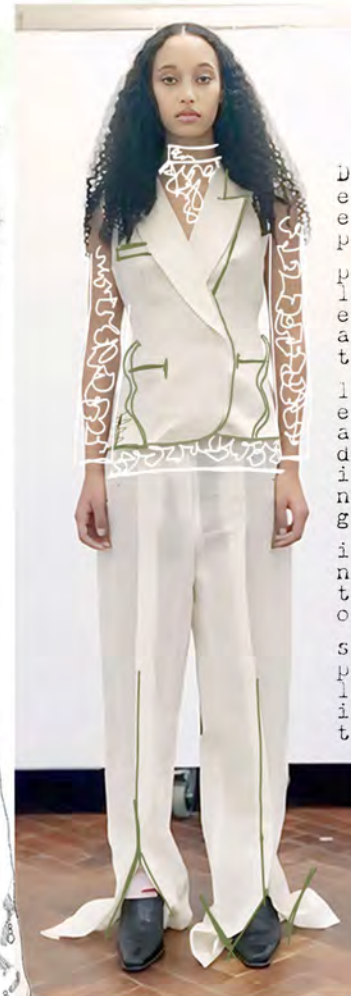
CONCEALED  
BUTTON  
STAND



PAIR  
WITH  
SEQUIN  
BOTTOM  
NECK



CRYSTAL  
DROPS



DEEPLY  
PLEAT  
LEADING  
INTO  
SPLIT



In The Light  
Of Equinox

LOOKS  
21  
REVIEWS  
DESIGNED



Daisy foil print negative



Silhouette development



Dusty pink creased satin



Exploring spiral cutting techniques

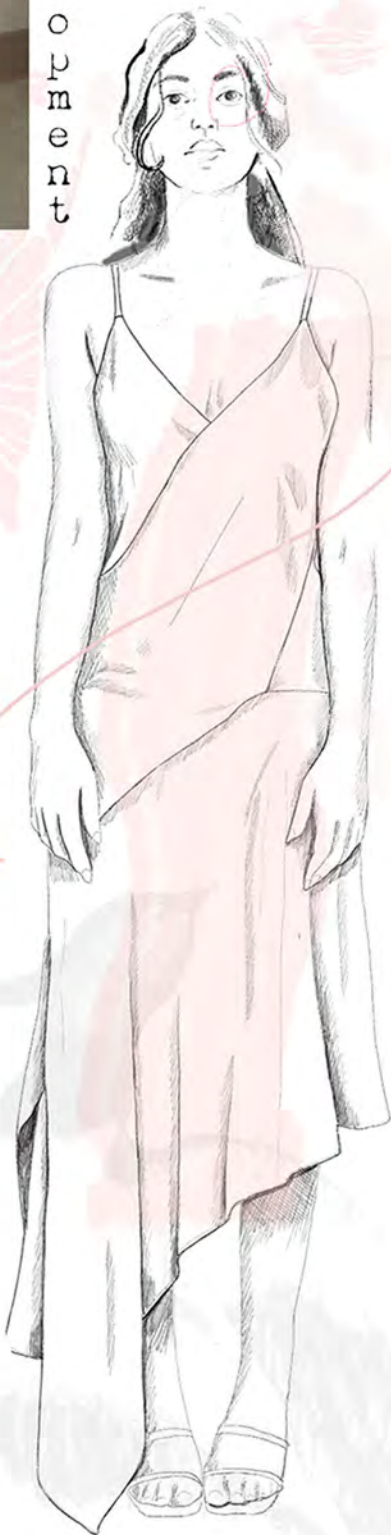


In The Light  
Of Equinox

LOCK 2 - PRIMA dress



Print Development



Print Placement development



Screen printing process



Digital dress



In The Light  
Cf Equinox

LOOK FOR NON DRESS



SUPPLIES



TOPPING PROCESS



Shorten length



In The Light Of Equinox



Detail developments



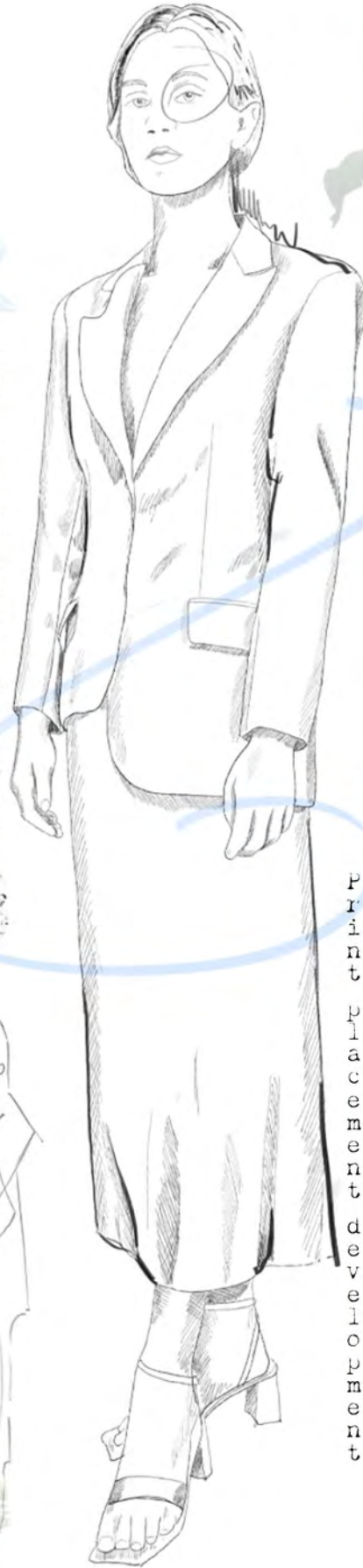
LOCK 5 Handmade suit and wool saten blazer

Handmade suit and wool saten blazer

Print development



Close fitting blazer



Print placement development



FOUR SKIRT IN PROGRESS



Asymmetric hemline



Toiling details



Shorten skirt length



In The Light Of Equinox

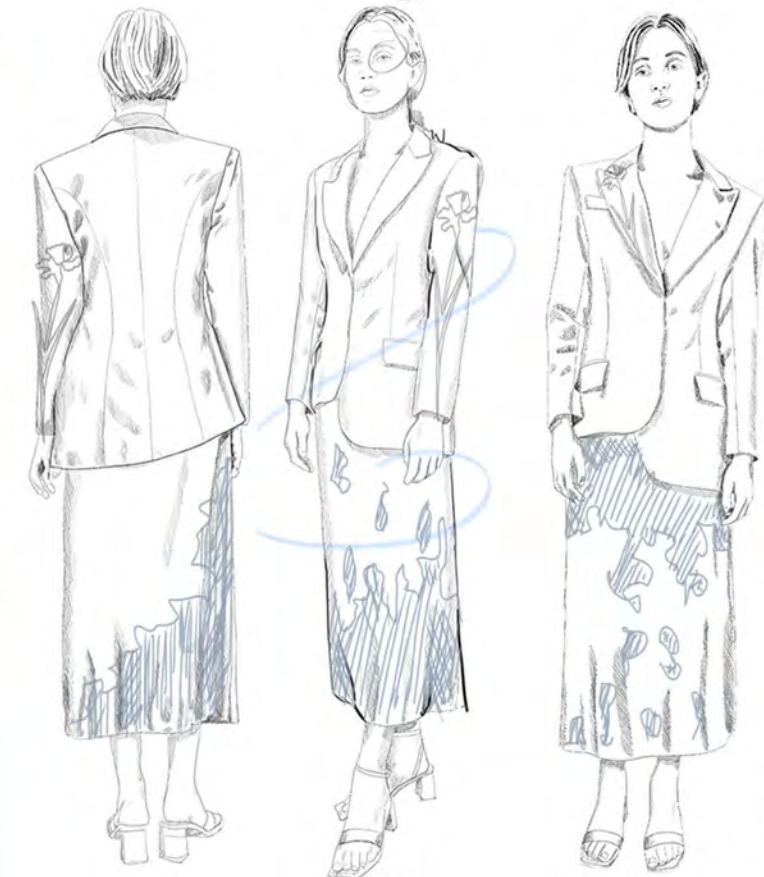
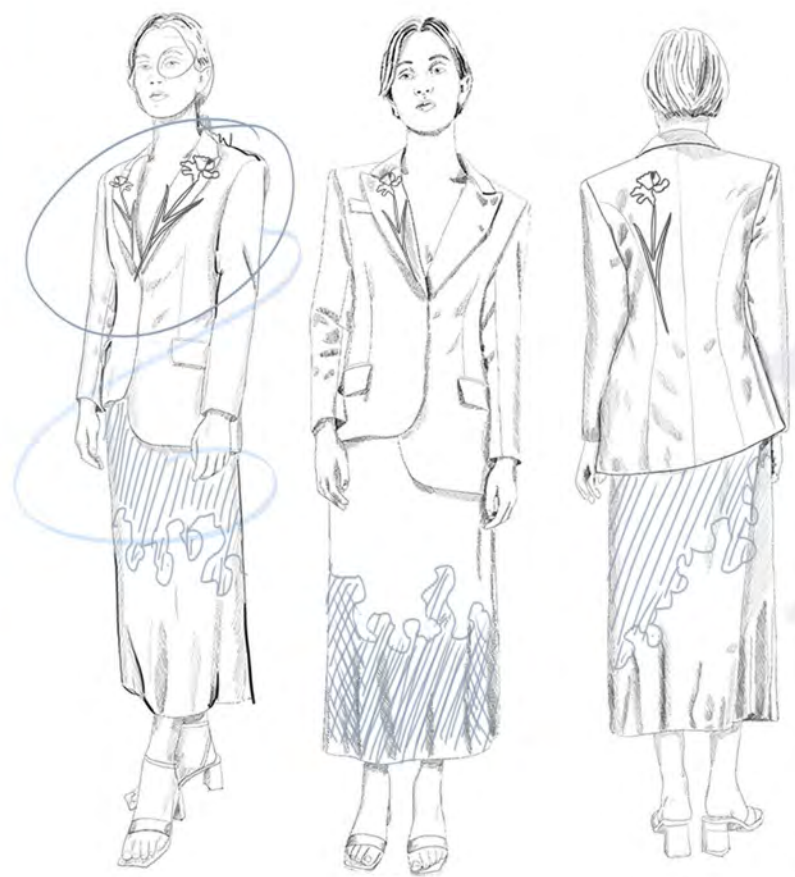
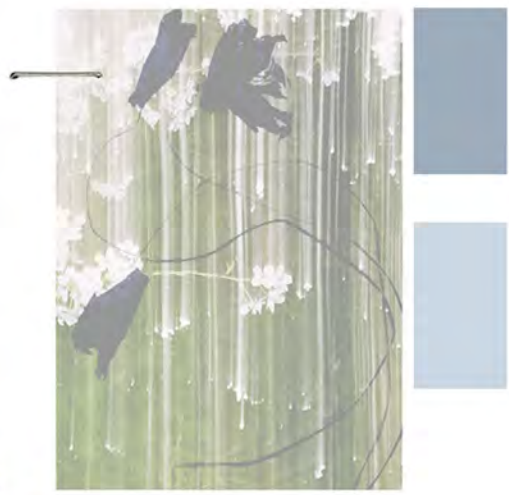
LOCK 2 - Career development suit



Falling flower skirt print development



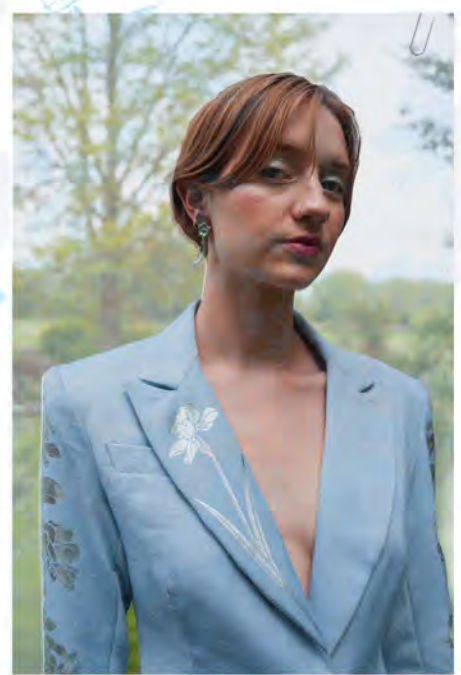
Folded apron detail



Print placement development



More print negatives



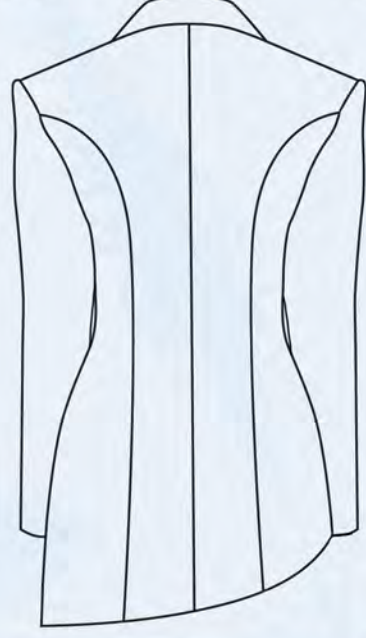
In The Light  
Of Equinox



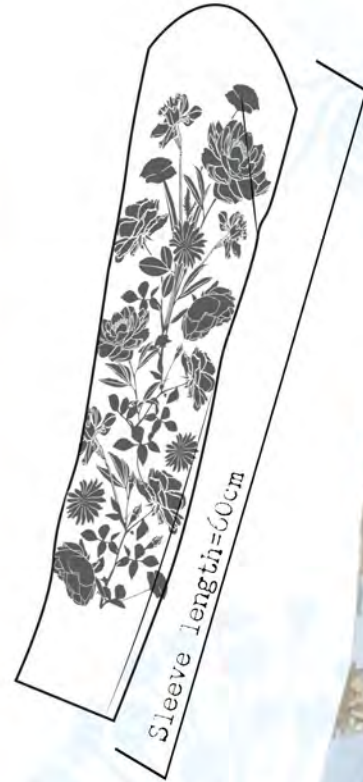
All measurements in cm unless otherwise stated.

# Look 5-Caeruleum Suit

Hand dyed wool sateen blazer, featuring silver foil print



Full length of jacket from neck point = 76cm



Sleeve length = 60cm

Jacket also features two jettted pockets with flap and one outer breast pocket on the right side.



Jacket features a concealed button stand, hiding two buttons of 1.5cm



Length of right side = 59cm

Pocket flap length = 11cm  
pocket flap depth = 9cm

Length of left side = 73cm

Silver foil print runs down the length of both sleeves in mirror image

-Asymmetric hem  
-Silver foil floral print on sleeves and right lapel

Jacket features an asymmetric hem that swoops from right to left

Hand dyed A-line satin skirt, featuring all over floral foil print

Lapel length = 39cm  
Print length = 34cm



Front dart length = 9cm  
Back dart = 15cm

Waist circumference = 63cm



The same foil print is used on both the front and back of the skirt

Skirt is fully lined with silk

A-line Skirt length = 94cm



Invisible zipper = 31cm

Hem width = 58.5cm  
Hem circumference = 117cm



Print length = 80cm



Print length = 48cm

In The Light  
Of Equinox

P r i n t d e s i g n i n s p i r a t i o n



W h i m s e y



A k e e p e r o f j e w e l s



E r d e m



E n t a n g l e d f l o r a



P e e p e

In The Light  
Of Equinox



Two tone digital print in repeat.  
For: Roseum Suit

In The Light  
Of Equinox



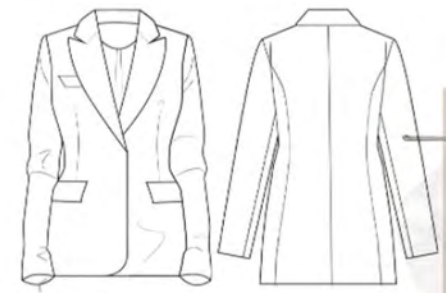
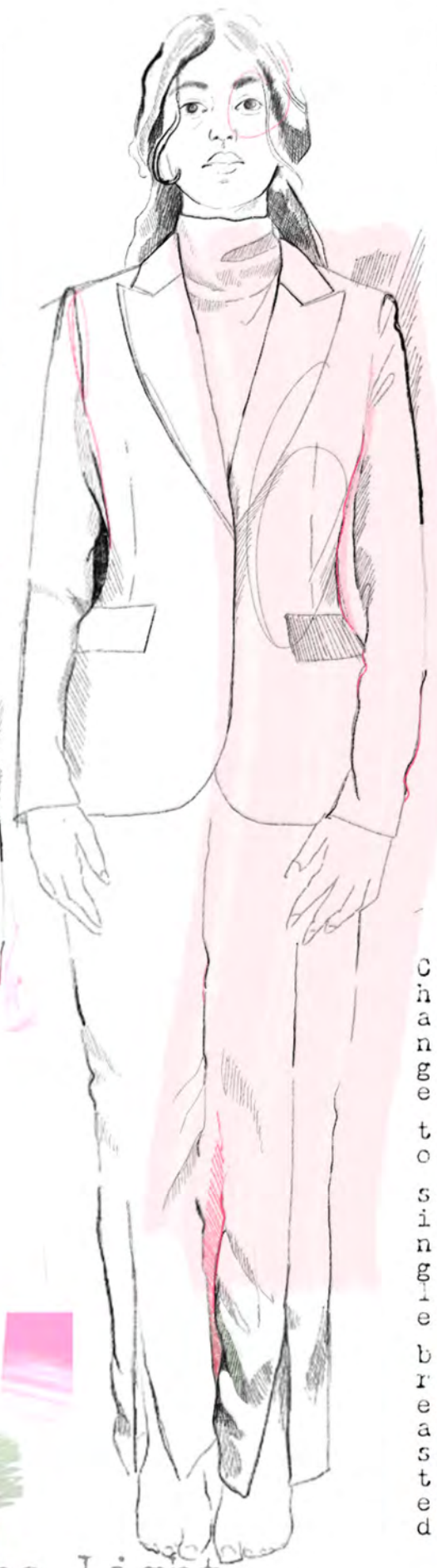
Two tone digital print in repeat.  
For: Viridus Cape Coat

LOOKBOOK DESIGN DEVELOPMENT

INITIAL DRAFWORK



DETAILED DEVELOPMENT CONCEALED BUTTON STAND



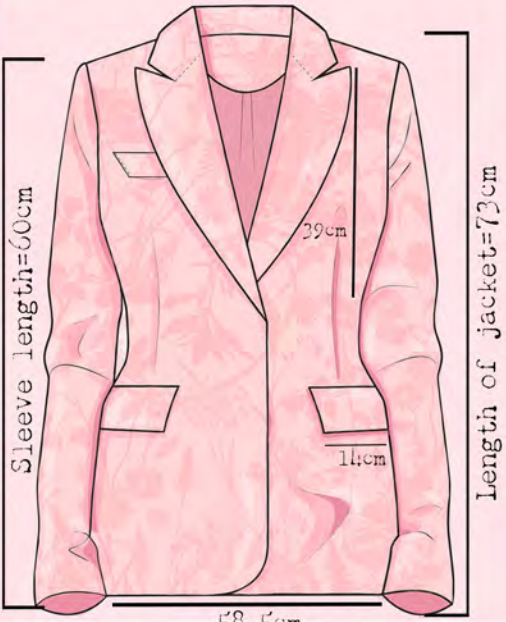
CHANGES TO SINGLE BREASTED

FOLDING PROCESS

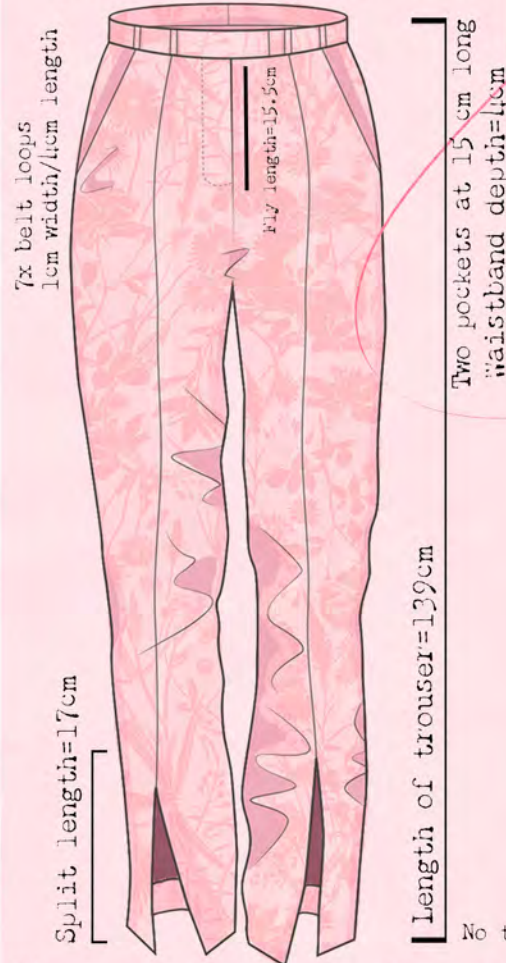
In The Light Of Equinox

# Look 3-Roseum Suit

Two tone satin suit, featuring fitted blazer and split leg trouser



Jacket features two pockets with flap and one outer breast pocket on the right side



Trousers feature a central seam down the length of each leg which leads into a split.

Fabrication= digitally printed poly/satin

All measurements in cm unless otherwise stated.



Jacket features a concealed button stand, hiding two buttons of 1.5cm



Chiffon charmeuse blouse with open back and neck tie.

Tie length= 16.4cm  
collar depth=8cm

Sleeve length to cuff=57cm

Cuff length=15cm

0.5 cm rolled hem

detail of blouse cuff with 0.5 placket and single rouleu loop with button.

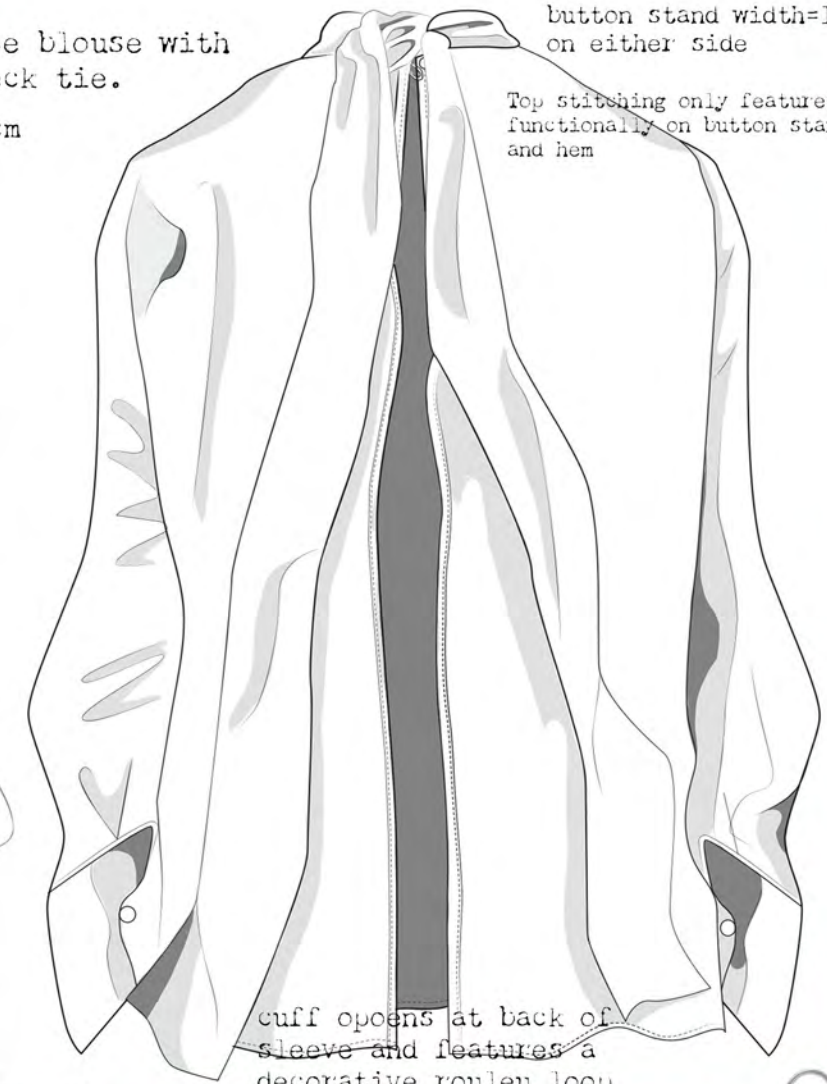
Placket length=10cm  
Placket width=0.5cm

Cuff length=15cm

Detail of blouse neck tie and open back

single rouleu loop and button

button stand=1cm depth



button stand width=1cm on either side

Top stitching only features functionally on button stand and hem

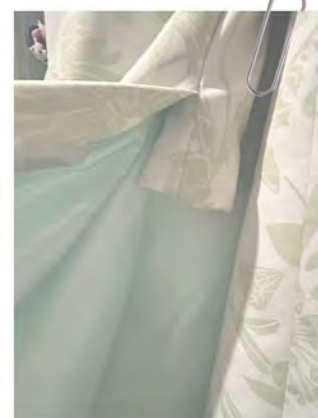
cuff opens at back of sleeve and features a decorative rouleu loop

Digital print design to feature all over tboth suit garments



In The Light  
Of Equinox

LOOK VIVID PRESIDENTIAL



In The Light  
Cf  
Equinox

A collection of bespoke, hand-crafted jewellery inspired by the story of 'Masquerade'.

Jewellery  
a keeper of jewels

With a little gold taken from the dawn sky, she cunningly wrought a splendid jewel that was the perfect mirror of her love. It had about it a beauty more permanent than the soft lip or flashing eye, a beauty that is for ever and mocks time.

a lake that shone like silver

In The Light  
Of Equinox  
-Keeper of Jewels-

