

a secure base

Rio Aso K1928017
K1928017@kingston.ac.uk
asorio.1217@gmail.com



1. secure base : a safe space and the sense of security that a child gets through a relationship with a caregiver

2. secure base (project) : a series of garments to transport the wearers to their childhood, pattern-cutting based on ill-fitted shapes / proportions found in children's bodies and clothes















wonky shape

twisted space between fabric and body



wonky shapes

sticking-out space





concentrated volume at the front
long torso or long rise



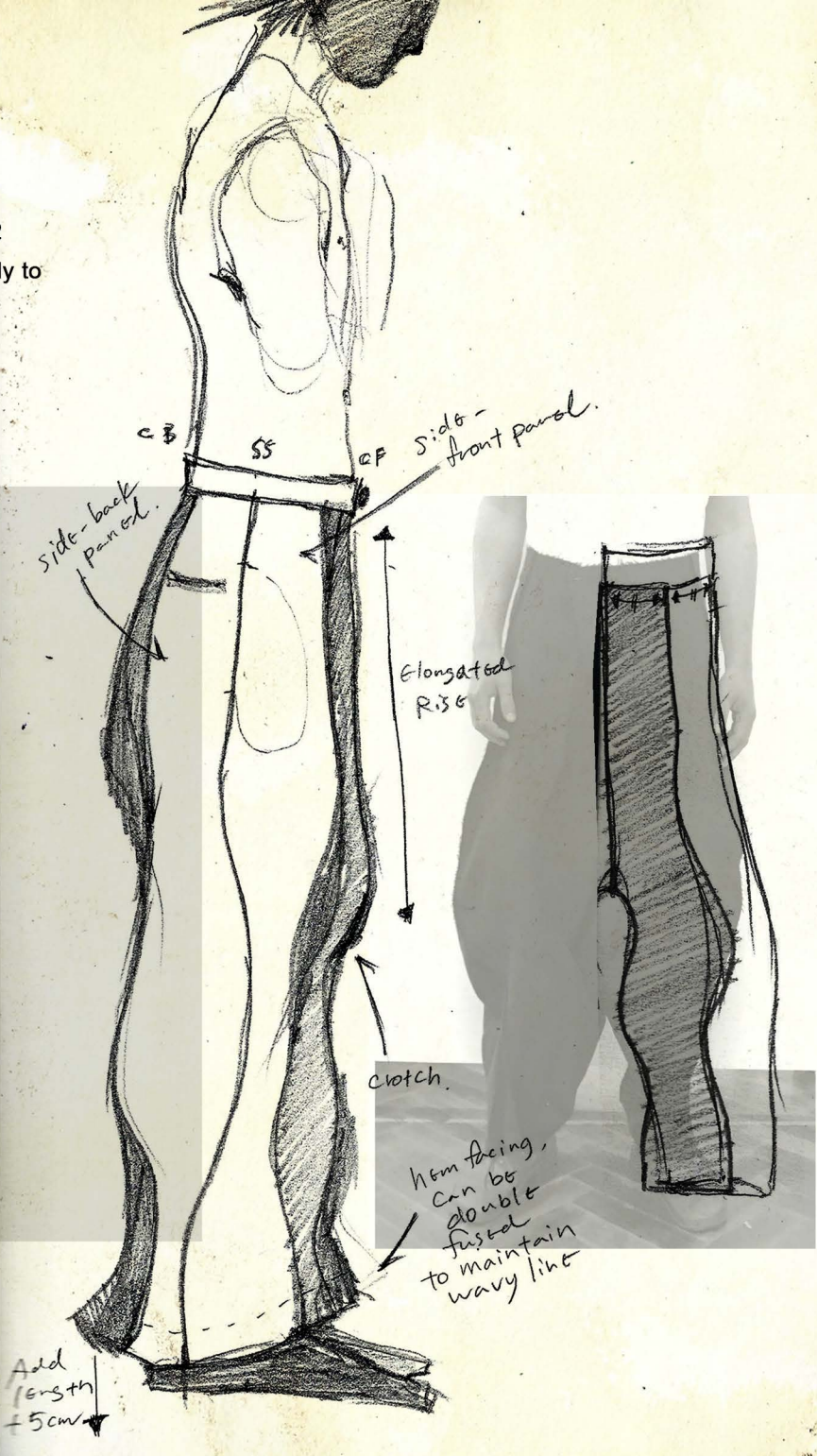
toiled with medium weight 100% wool without fusing

2nd toile



sewn with seams out, double-row stitches on raw edge

front trousers block was divided into 2 components, the curve was added only to the CF trousers with elongated rise



Add length +5cm

navy brushed cotton twill, to be block-fused to keep the tension of the fabric high to make more sculptural silhouette

create more twisted structure by draping using the previous toile

twist each panel towards CB



twisted movement found in trousers my older sister used to wear

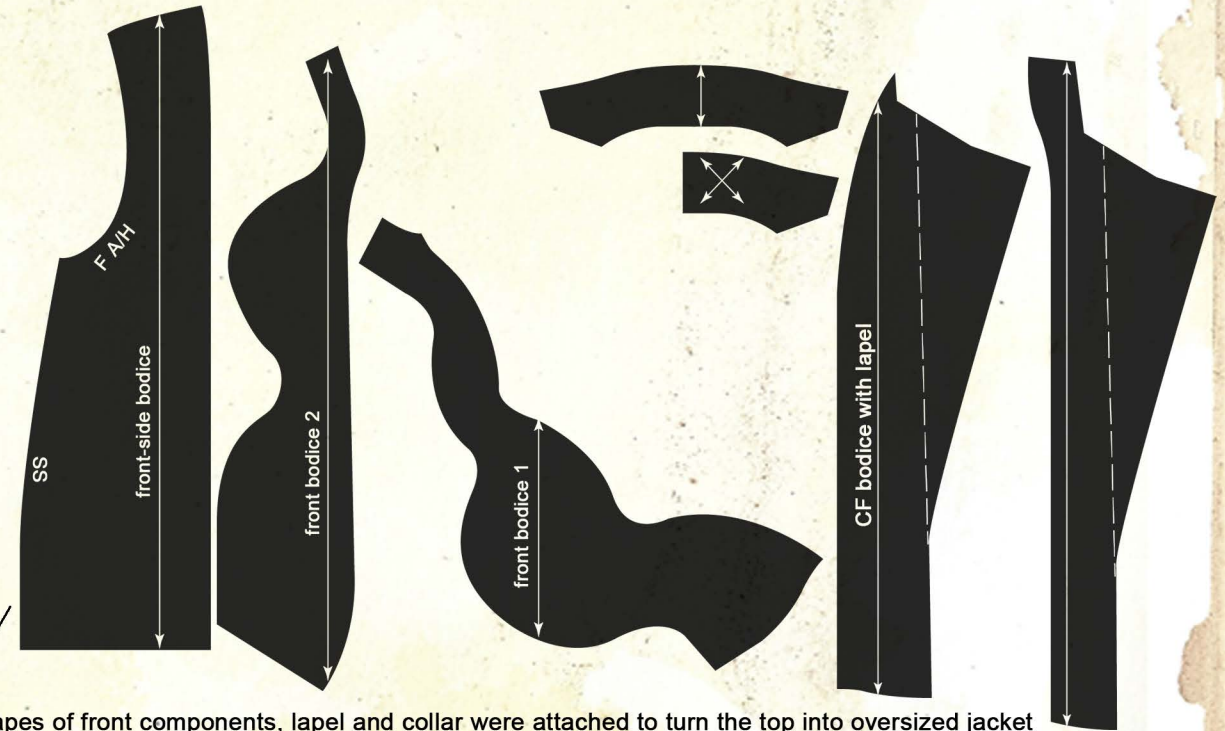
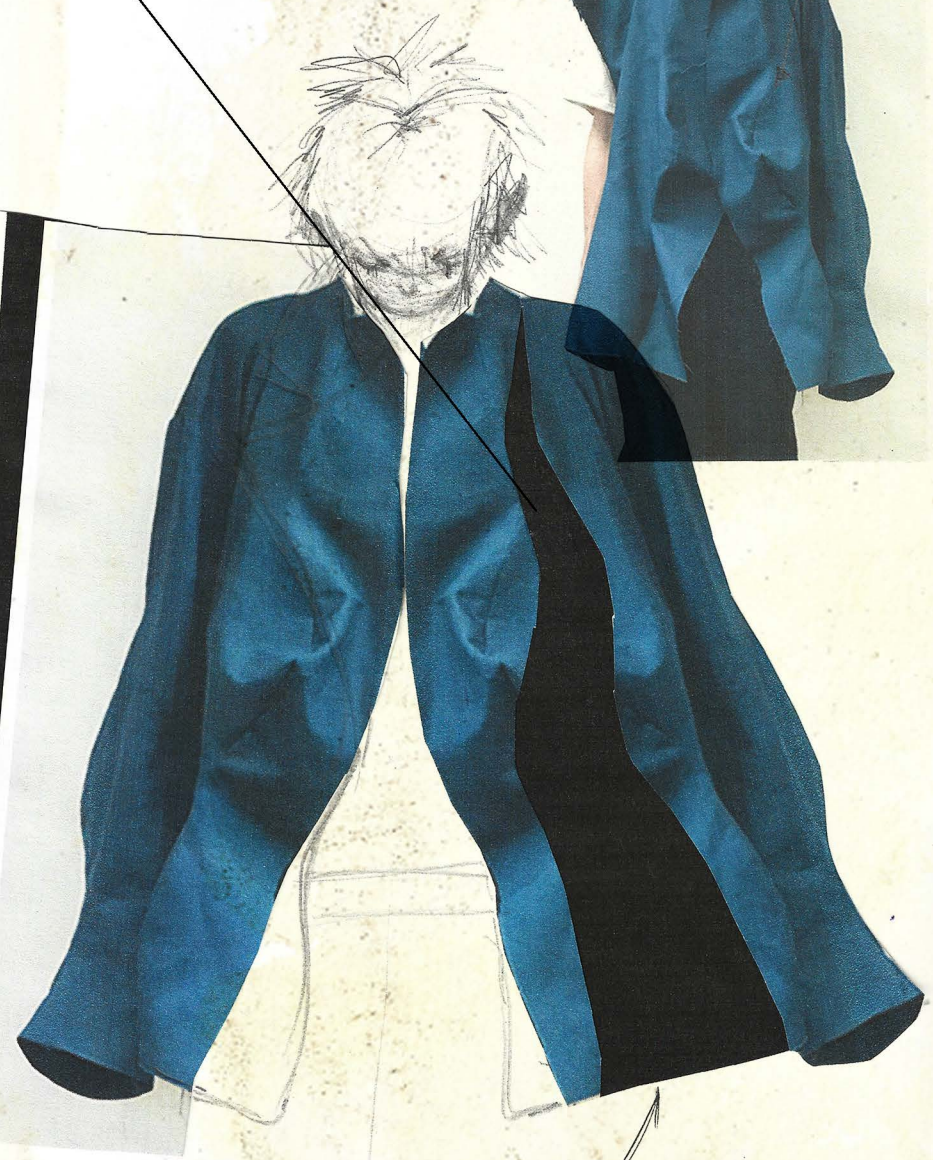
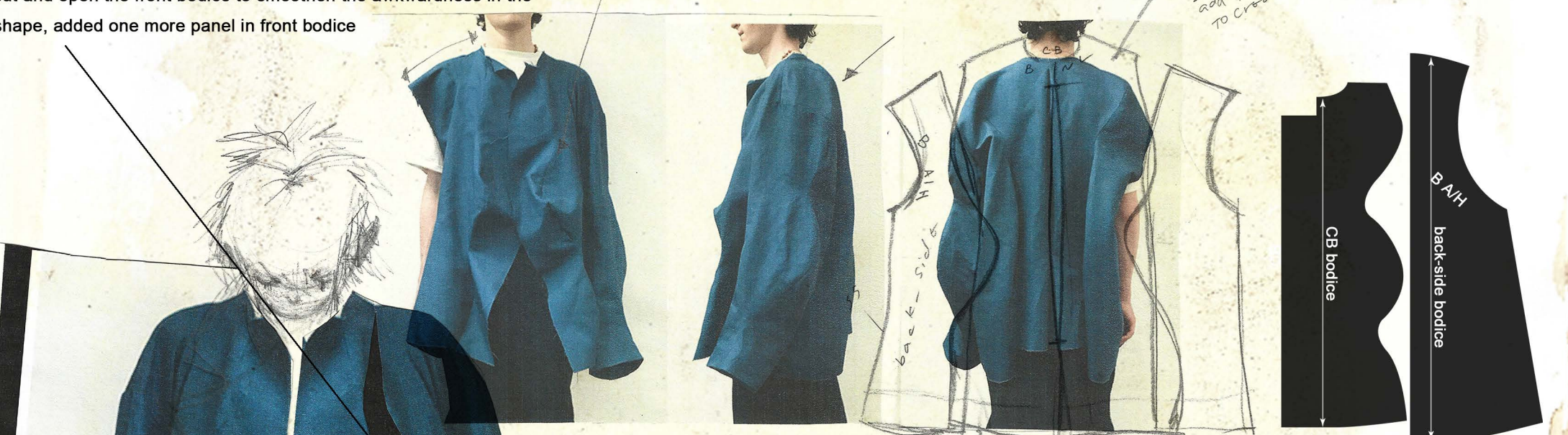


3rd toile front view

Front bodice,
The volume / shape is awkward,
add 1 more seam + panel
to smoothen the shape.

back bodice
divided into
2 panels,
add tuck at CB
to create depth.

cut and open the front bodice to smoothen the awkwardness in the shape, added one more panel in front bodice



final pattern shapes of front components, lapel and collar were attached to turn the top into oversized jacket



navy cotton and polyester blend twill suiting



black melton wool



navy stone-washed cotton



navy brushed cotton twill



black wool-blend flannel







black polyester and wool blend, mono-screen
printed in yellow, double-row TS



LOOK2 Trousers



4cm-wide waistband, TS at the bottom line

single TS on zip fly, 3cm from CF TS without curve at the bottom

18cm YKK black metal zip

double-row TS on each seam, sewn with seams out and raw edges





rust wool 100%

black brushed wool 70% polyester 30%



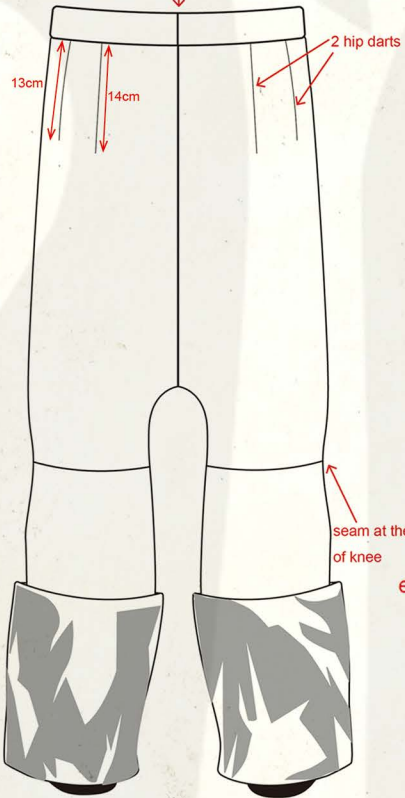
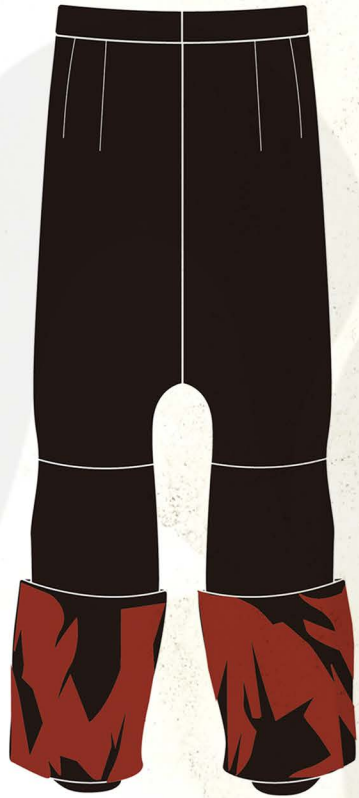
LOOK1 Trousers



TS around the edge of rust-coloured wool placed on top of black wool



CB seam at waistband, cut with 3.5cm seam allowance



13cm

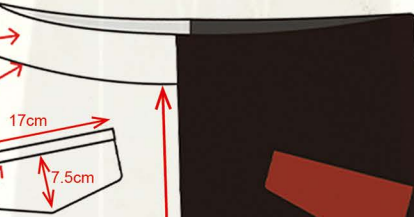
14cm

2 hip darts

seam at the back of knee

4cm-wide waistband, canvas-fused

invisible TS on waistband seam



17cm

7.5cm

jetted pocket with flap, jets are cut in black wool, flap is cut in rust-coloured wool

36cm

crotch patch cut in rust-coloured wool

22cm

side-knee panel stick out the knee shape, cut in rust-coloured wool

elongated turn-back hem

27cm

