

Portfolio

Alexandria Palmer-Wilcock

alexa@palmer-wilcock.com

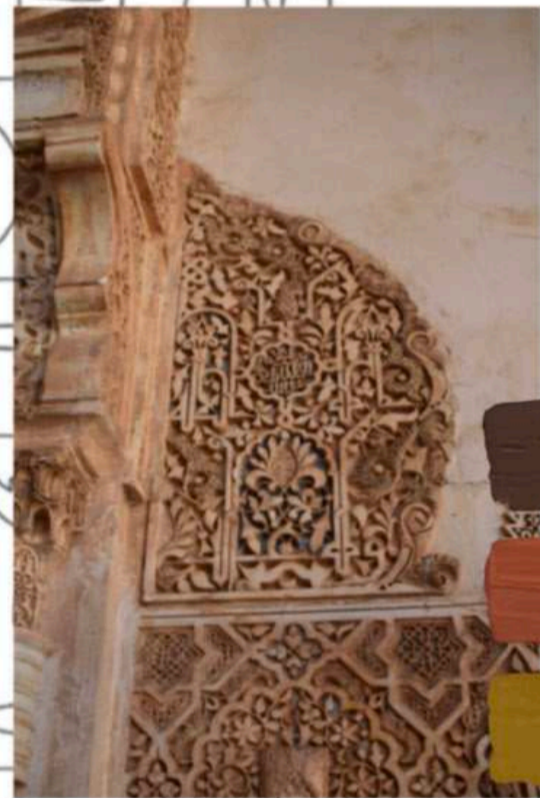
Instagram: [alexa_palmer_wilcock](https://www.instagram.com/alexa_palmer_wilcock)

07711230710

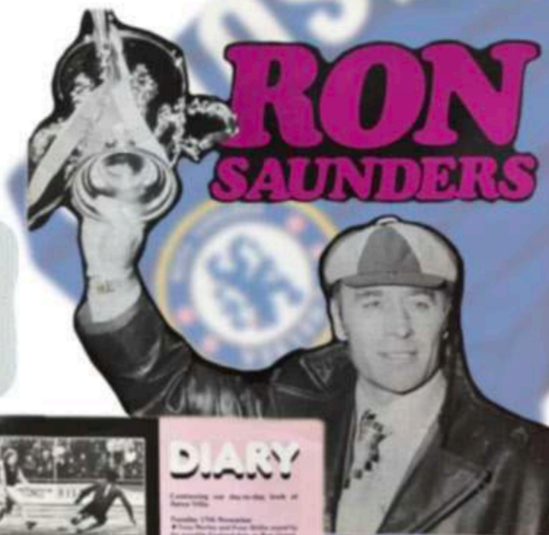
CASUALS

PART 1

Exploring the theme of patterns. Looking at the Alhambra Palace, islamic architecture, heavily decorated mosaic tiles and religious inscriptions. Moving my research into football as a religion.



Finding patterns in everyday objects, and deconstructing objects to find a pattern within.



The devotion of football fans often led to be described as a religion



- reflecting on my football research to create garment designs
- creating 'up to date' outfits that were worn in these images



Roman Catholic background

- Looking for patterns and motifs in football memorabilia.



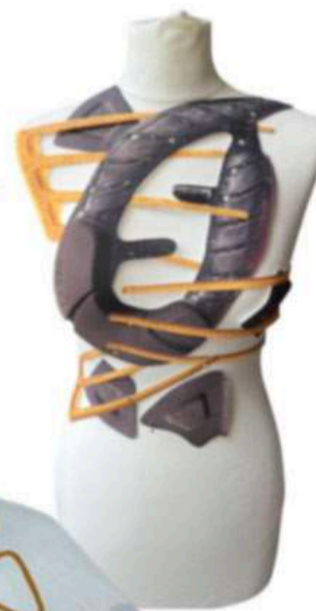
- muse research
- reference to letter and number motifs



- selecting patterns and motifs from trainers



- trainers for a colour palette



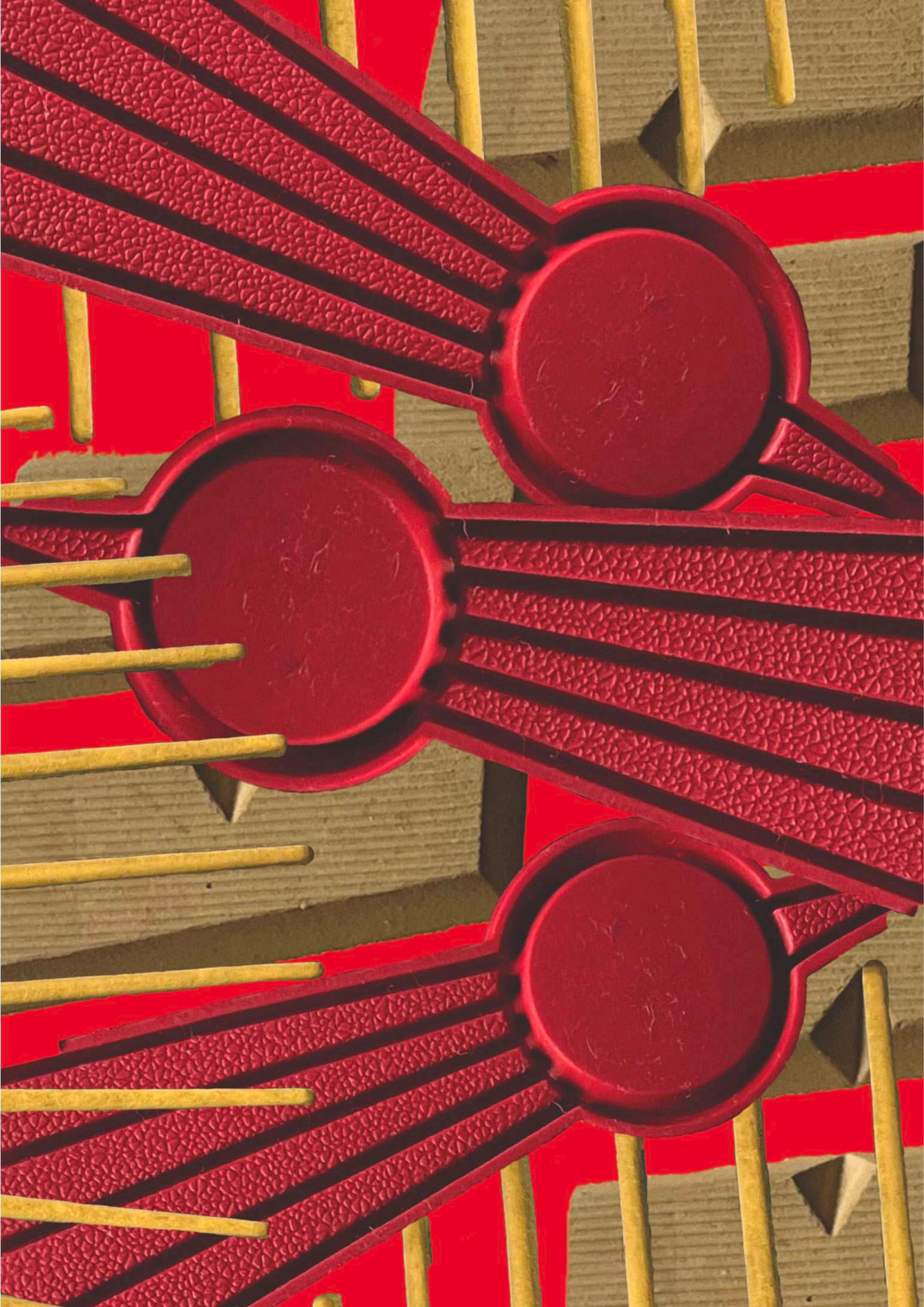
- focusing on shape on the body to reflect trainer motifs

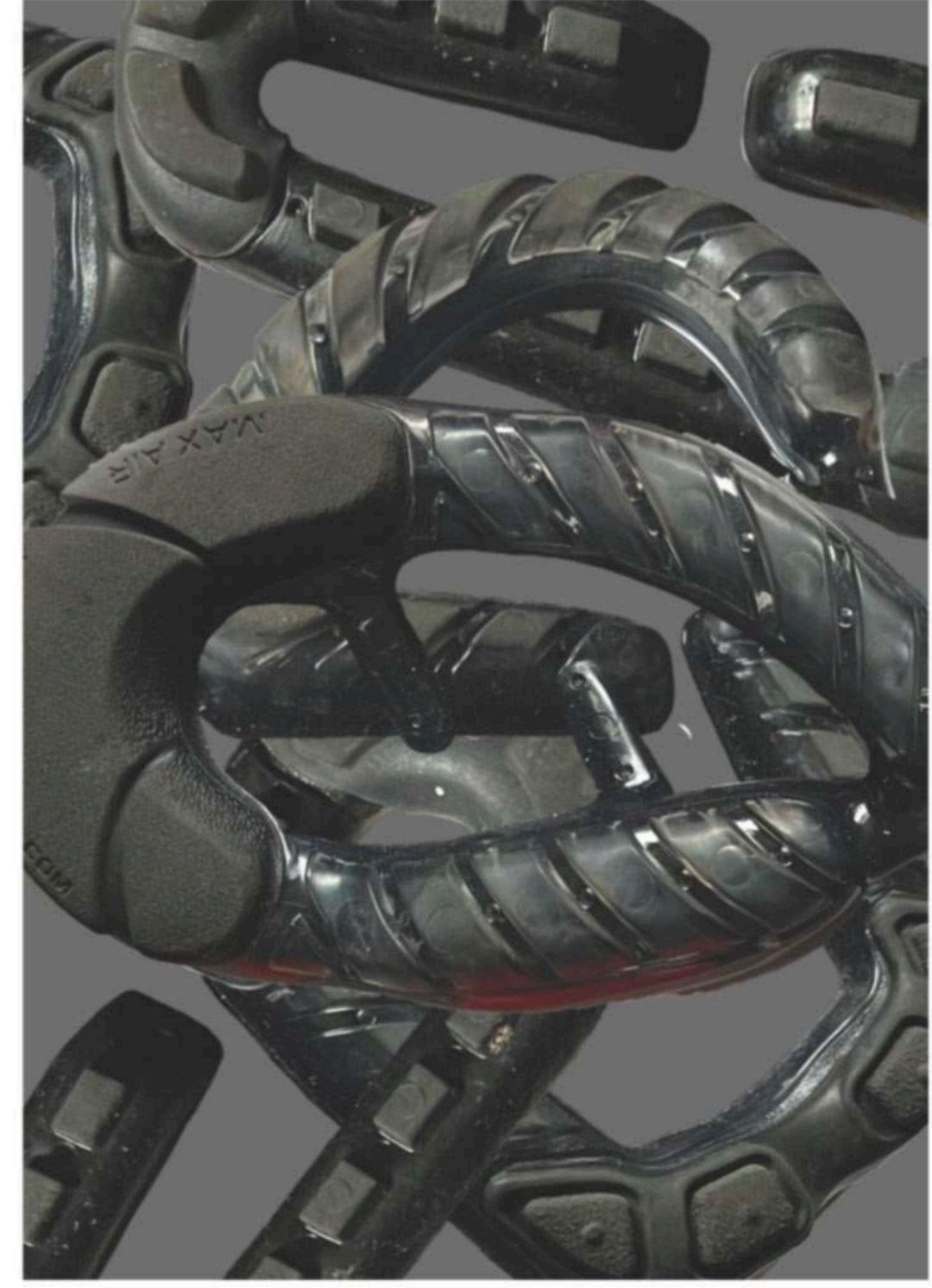
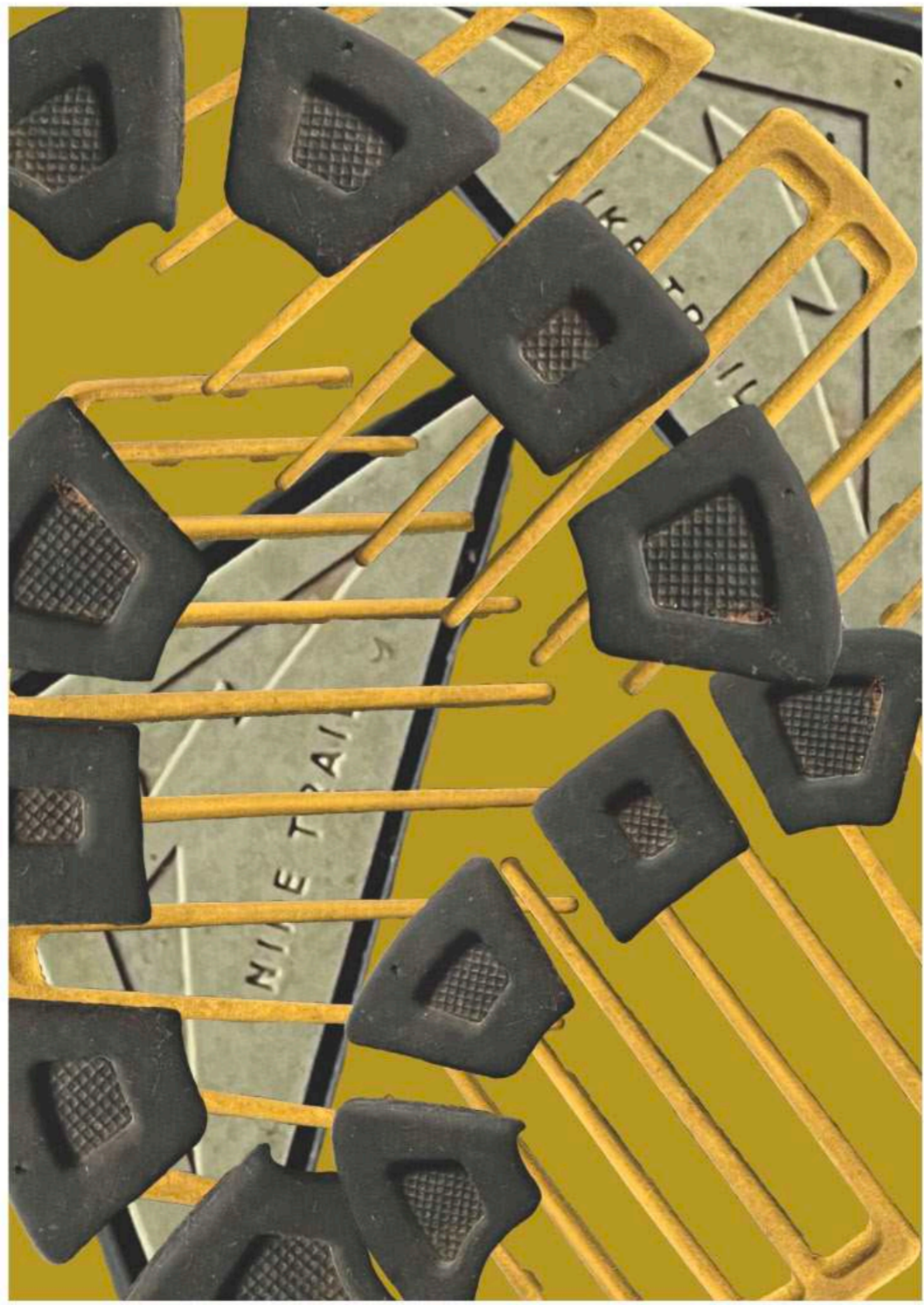
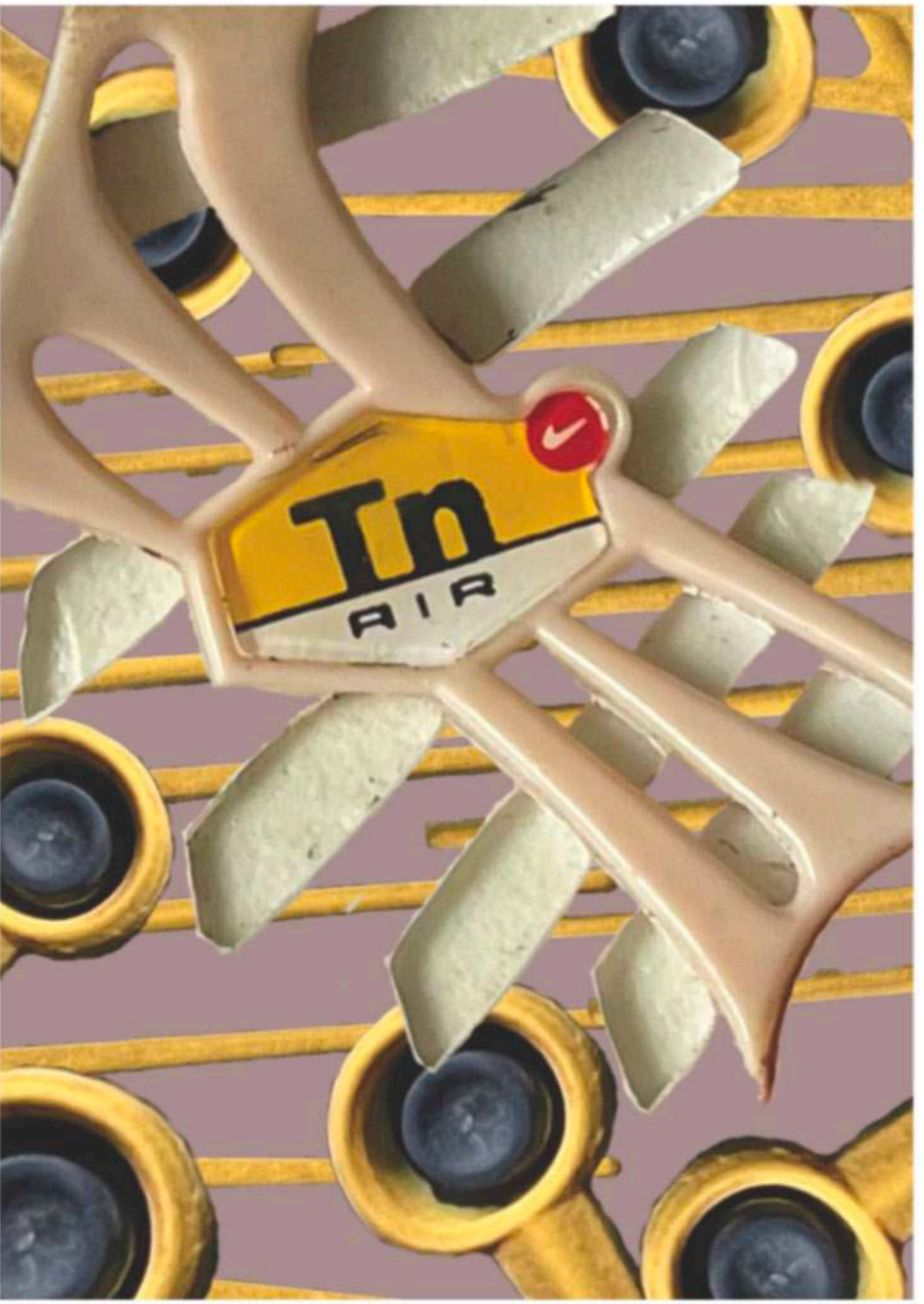
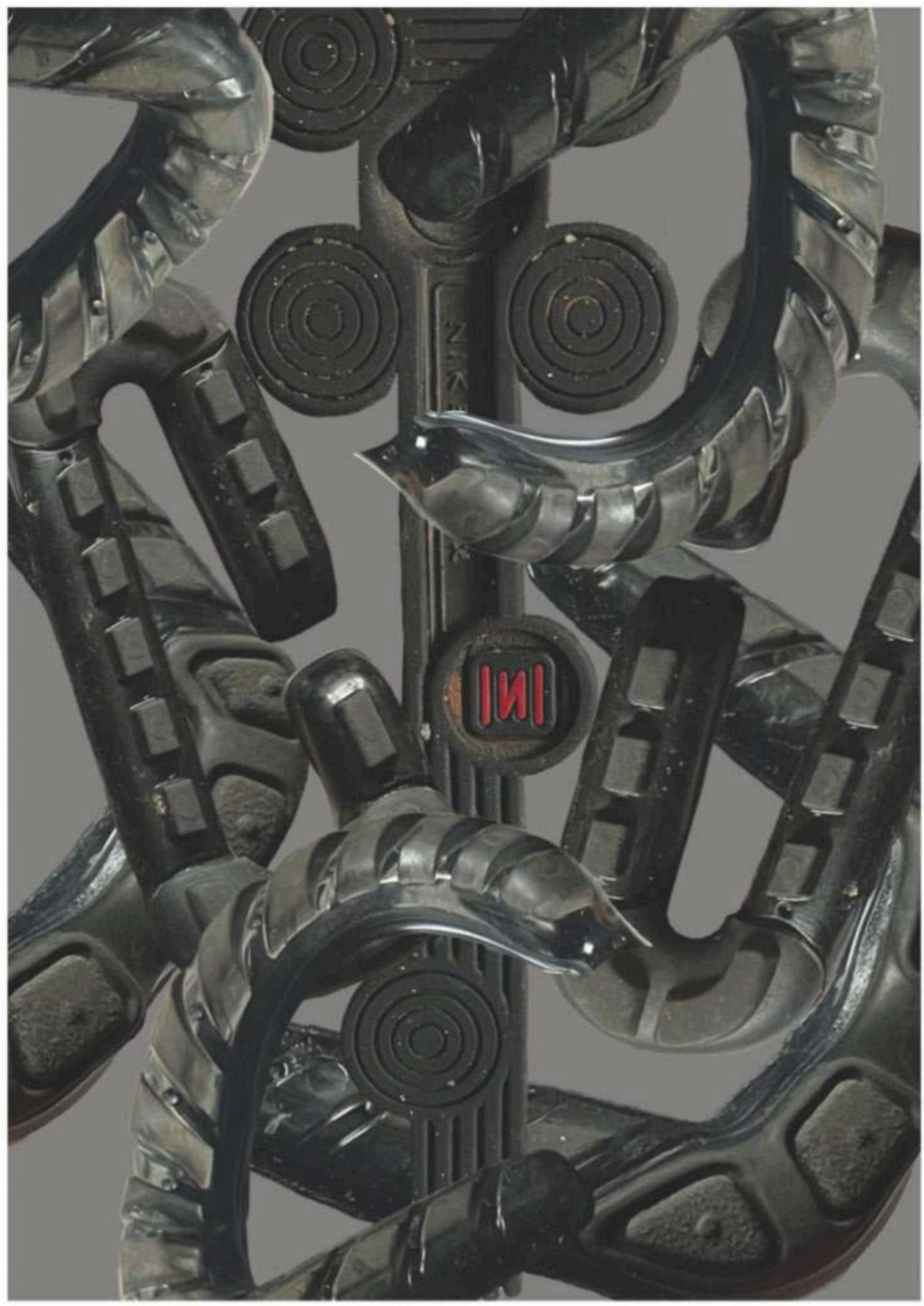
- foiling, flocking, sublimation and laser cutting



- samples based on the trainer motifs
- enlarging motifs to inform design on the body
- latex and 3D pen

- using trainer motifs for pattern, construction and style lines







Casuals

Part 2

Street wear and trainers are no longer considered for only sport or casual wear. This will focus on high-end street wear, with a sporty element. The garments will be versatile for day wear through to evening wear with impactful hand drawn designs transferred through complex print processes onto a range of textiles. Showcasing attention to detail and abilities to translate pattern in everyday items to print.



TIFFANIE ALICE

Fashion stylist

Confident

Passionate and ambitious

Sassy



HELEN KIRKUM

A-COLD-WALL

- mainly focused on men's wear
- variety of outdoor wear and day wear
- lots of print



ADIDAS

- blocks of colour or pattern
- colour blocking
- placement of style lines only on the side of the garment



- focusing on placement of style lines to break up colour
- fitted and baggy constructions

Westminster men's archive

- coloured strips
- colour blocking



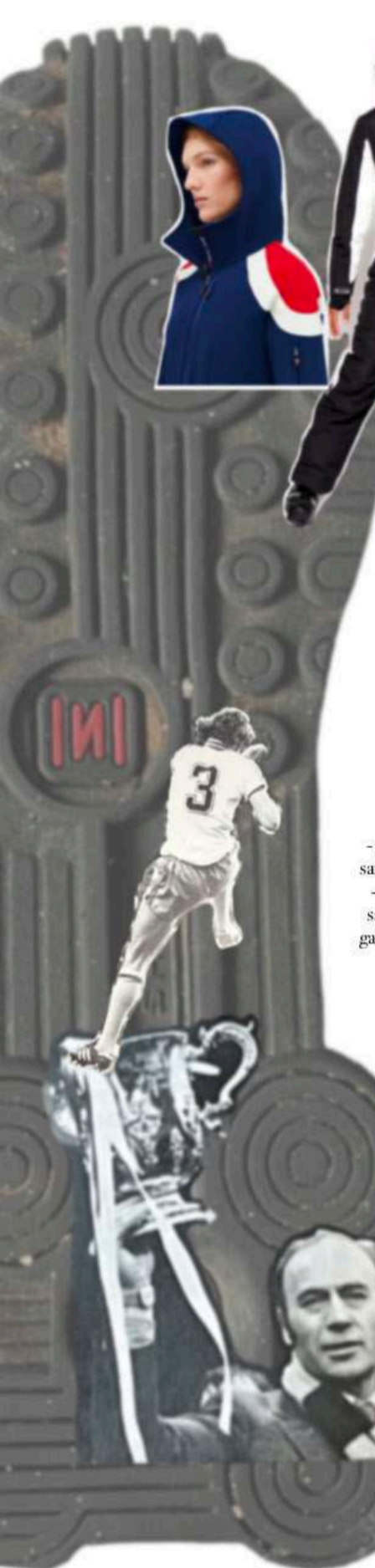
Westminster archive Lightweight bomber with
TRACKTOP
Adidas
1920s - 1930s



Westminster archive FRENCH FLEE BOMBER
TRACKTOP
Adidas
1920s - 1930s



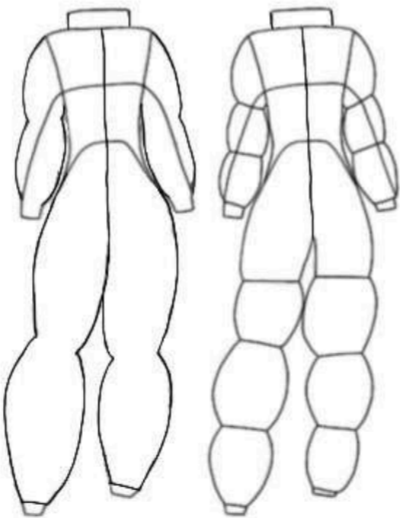
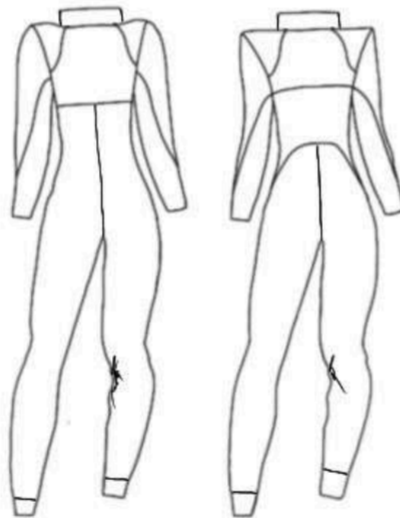
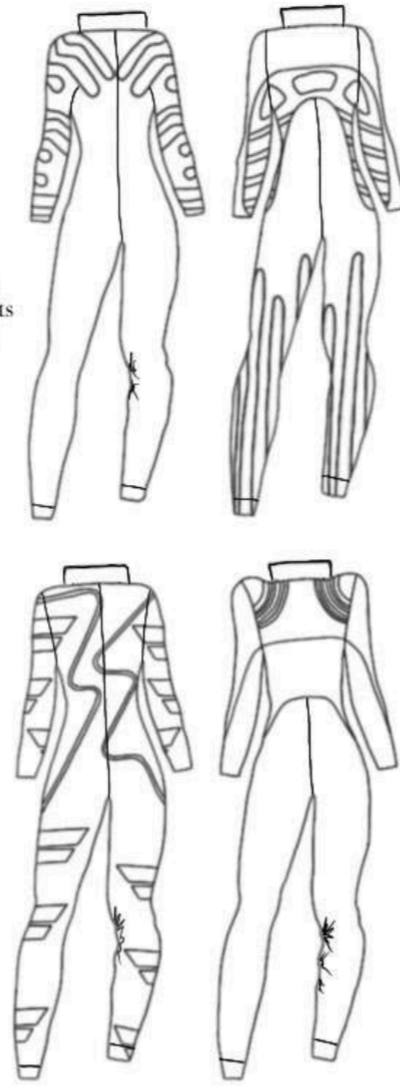
Westminster archive Burgundy Trackball Jacket
Westminster's Archive
1920s - 1930s



-sporting suits have unique style not just for look but for performance
-shoulder pads for safety which I could add as style in my suit



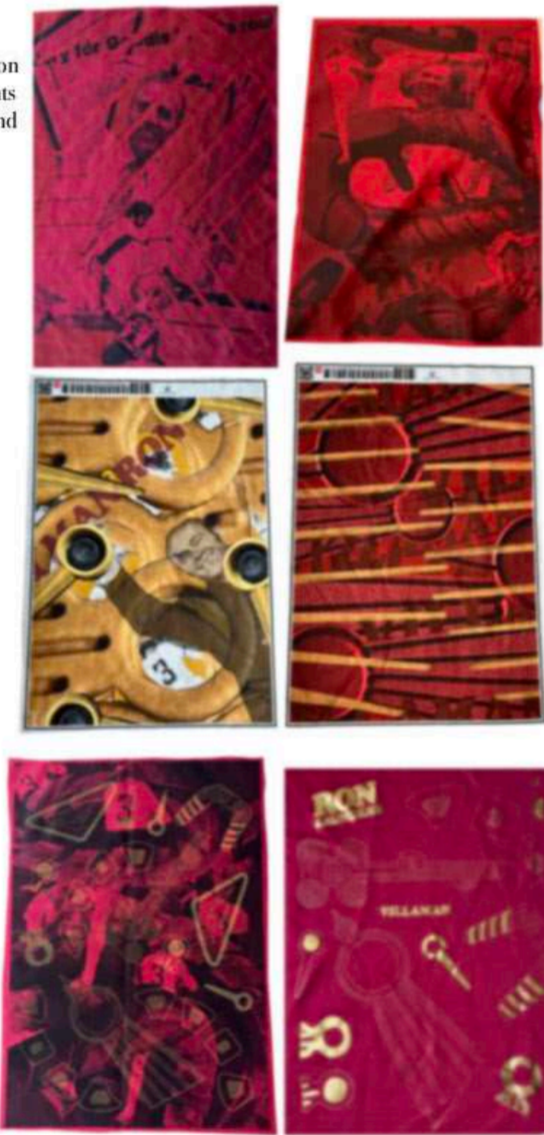
-placing motifs on the bodysuit, looking at mirroring the sports suits
-placing style lines on different areas to colour/pattern block



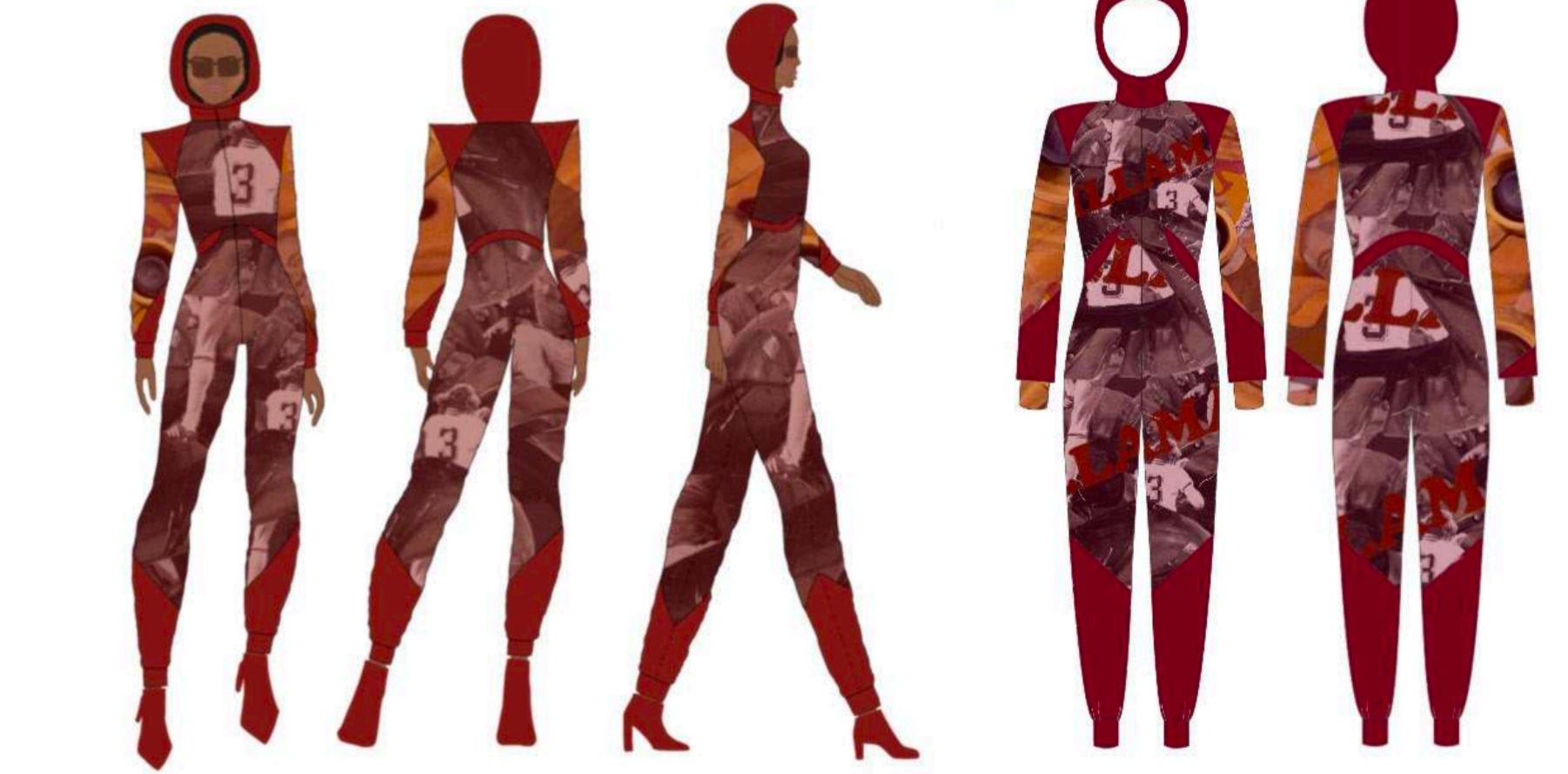
- using colour from samples for garments
- using motif from samples to apply to garment as style lines



- comparing sublimation prints on red jersey with prints on white background



- screen printing, foiling, puff binder and sublimation



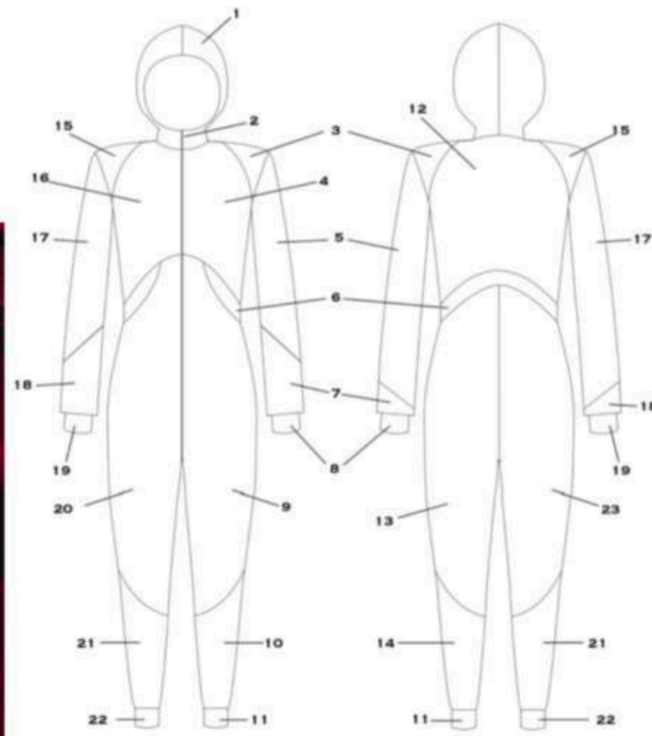
- working out scale and placement for digital print

- prints that will be used in final garments





CUSTOMER		FACTORY	STUDIOPW	SAMPLE SIZE	12	SEASON	AW 24	STYLE NAME	TERRACE JUMPSUIT	DATE DUE	22/03/24
DESIGNER	ALEXA PALMER-WILCOCK	DESCRIPTION	JUMPSUIT	NO. OF SAMPLES	1	PAGE	1 OF 1	STYLE NO.	#001	SIZE RANGE	6 8 10 12 14 16 18



NO.	COMPONENT	MATERIAL	COLOUR	SUPPLIER	DETAILS
1	HOOD	SCUBA JERSEY MIDWEIGHT	#APWRED1	FABRICLAND	FIXED, TWO PIECES, BINDING IN THE SAME FABRIC
2	ZIP	NYLON	#APWRED1	DOITEM	INVISIBLE, 65CM
3	SHOULDER	SCUBA JERSEY MIDWEIGHT	#APWRED1	FABRICLAND	NO PRINT, OVERLOCKED FLAT BEAMS
4	CHEST	SCUBA JERSEY MIDWEIGHT	#APWRED1	FABRICLAND	SUBIMATION PRINT, OVERLOCKED FLAT BEAMS
5	UPPER ARM	SCUBA JERSEY MIDWEIGHT	#APWRED1	FABRICLAND	SUBIMATION PRINT, OVERLOCKED FLAT BEAMS
6	WAIST	SCUBA JERSEY MIDWEIGHT	#APWRED1	FABRICLAND	NO PRINT, OVERLOCKED FLAT BEAMS
7	LOWER ARM	SCUBA JERSEY MIDWEIGHT	#APWRED1	FABRICLAND	NO PRINT, OVERLOCKED FLAT BEAMS
8	ARM CUFF	SCUBA JERSEY MIDWEIGHT	#APWRED1	FABRICLAND	SUBIMATION PRINT, OVERLOCKED
9	UPPER LEG AND LOWER BODICE	SCUBA JERSEY MIDWEIGHT	#APWRED1	FABRICLAND	SUBIMATION PRINT, OVERLOCKED FLAT BEAMS
10	CALF	SCUBA JERSEY MIDWEIGHT	#APWRED1	FABRICLAND	NO PRINT, OVERLOCKED FLAT BEAMS
11	LEG CUFF	SCUBA JERSEY MIDWEIGHT	#APWRED1	FABRICLAND	NO PRINT, OVERLOCKED FLAT BEAMS
12	BACK	SCUBA JERSEY MIDWEIGHT	#APWRED1	FABRICLAND	SUBIMATION PRINT, OVERLOCKED FLAT BEAMS
13	BACK THIGH	SCUBA JERSEY MIDWEIGHT	#APWRED1	FABRICLAND	SUBIMATION PRINT, OVERLOCKED FLAT BEAMS
14	BACK CALF	SCUBA JERSEY MIDWEIGHT	#APWRED1	FABRICLAND	NO PRINT, OVERLOCKED FLAT BEAMS
15	SHOULDER	SCUBA JERSEY MIDWEIGHT	#APWRED1	FABRICLAND	NO PRINT, OVERLOCKED FLAT BEAMS
16	CHEST	SCUBA JERSEY MIDWEIGHT	#APWRED1	FABRICLAND	SUBIMATION PRINT, OVERLOCKED FLAT BEAMS
17	UPPER ARM	SCUBA JERSEY MIDWEIGHT	#APWRED1	FABRICLAND	SUBIMATION PRINT, OVERLOCKED FLAT BEAMS
18	LOWER ARM	SCUBA JERSEY MIDWEIGHT	#APWRED1	FABRICLAND	NO PRINT, OVERLOCKED FLAT BEAMS
19	ARM CUFF	SCUBA JERSEY MIDWEIGHT	#APWRED1	FABRICLAND	SUBIMATION PRINT, OVERLOCKED
20	UPPER LEG AND LOWER BODICE	SCUBA JERSEY MIDWEIGHT	#APWRED1	FABRICLAND	SUBIMATION PRINT AND FLAT BEAMS
21	CALF	SCUBA JERSEY MIDWEIGHT	#APWRED1	FABRICLAND	NO PRINT AND FLAT BEAMS
22	LEG CUFF	SCUBA JERSEY MIDWEIGHT	#APWRED1	FABRICLAND	NO PRINT, OVERLOCKED
23	BACK THIGH	SCUBA JERSEY MIDWEIGHT	#APWRED1	FABRICLAND	SUBIMATION PRINT, OVERLOCKED FLAT BEAMS





