



# JESSICA FLYNN

FASHION TEXTILES DESIGNER

JESSFLYNN02@HOTMAIL.COM

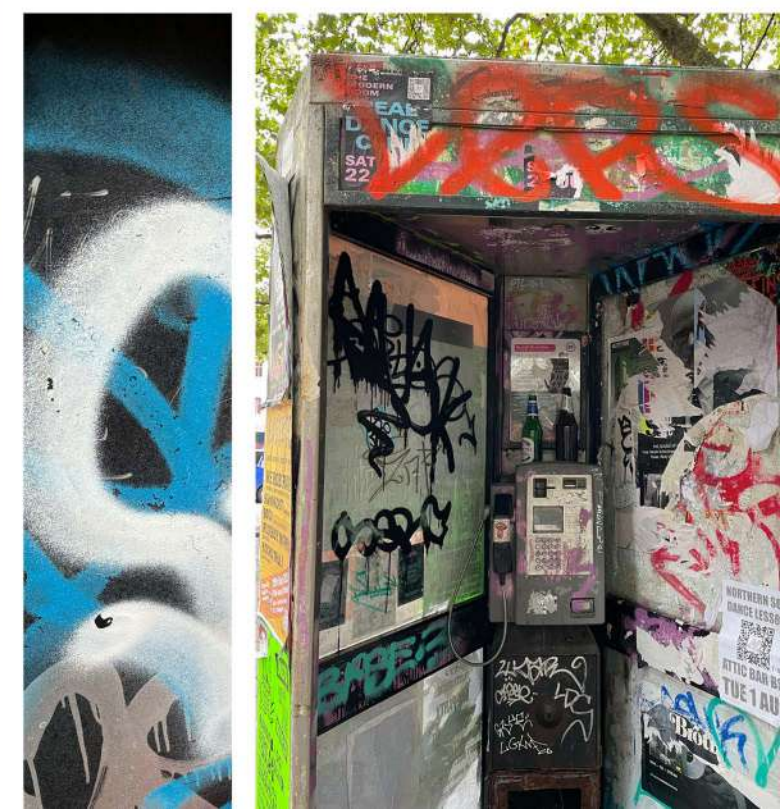
07917195702

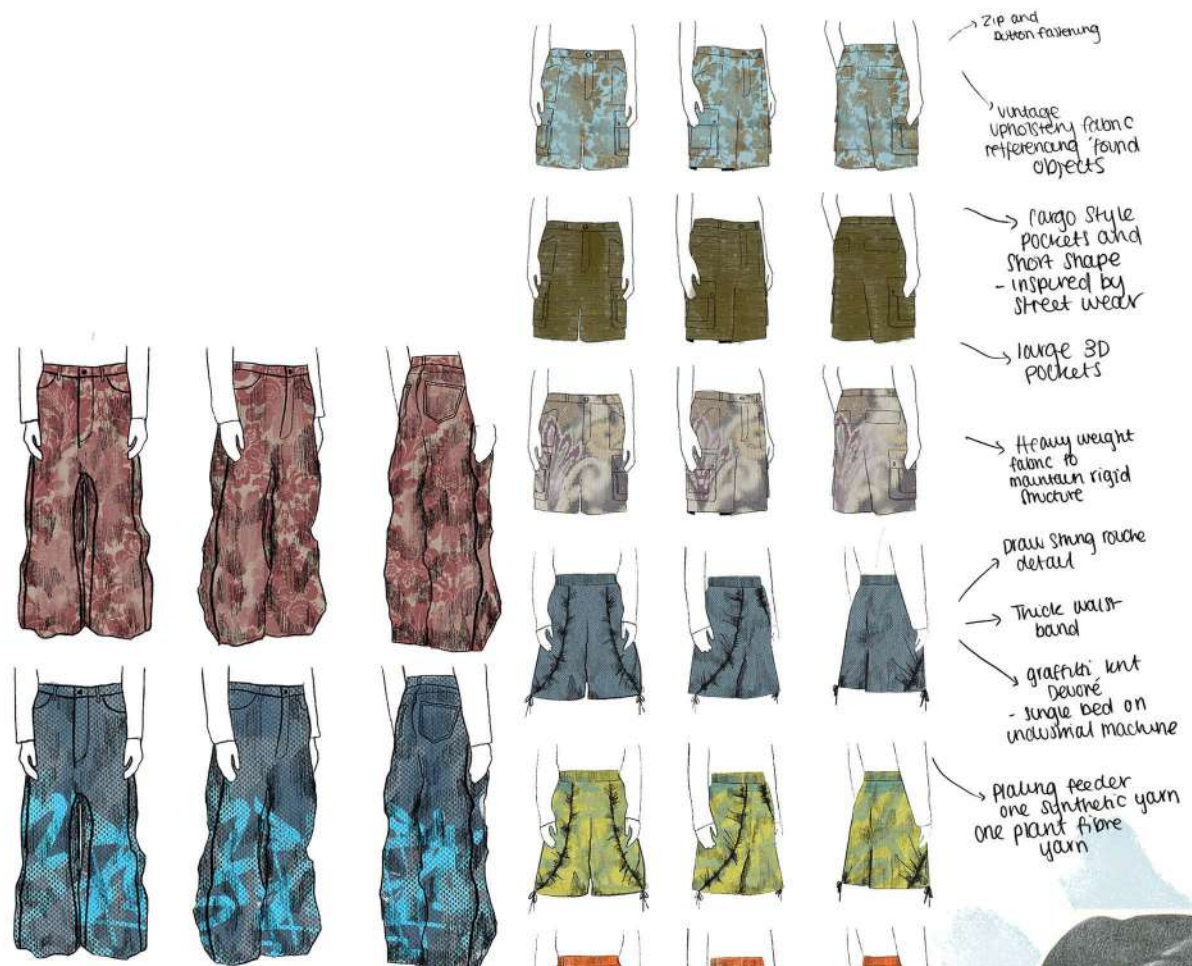
INSTAGRAM: JESSFLYNN.ART



# EVERY DAY: OVER LOOKED

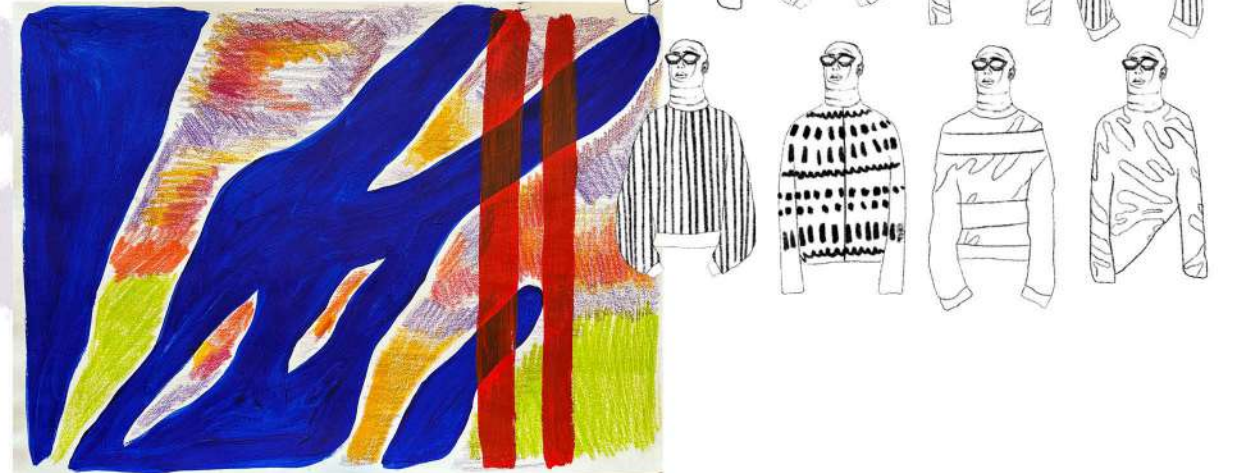
CREATING A KNIT COLLECTION THAT INTERTWINES A FOCUS ON SURFACE DESIGN AND TEXTURE BY SEAMLESSLY BLENDING KNIT AND PRINT. DELVING INTO THE INTRICATE DETAILS OF A CITYSCAPE, EMPHASISING THE ESSENCE OF A CITY'S DNA THROUGH MOTIFS INSPIRED BY ELEMENTS SUCH AS CHIPPED PAINT, FOUND OBJECTS, AND DECAY. AMONG THE TECHNIQUES THAT HAVE PROVEN MOST SUCCESSFUL IN MY SAMPLE WORK ARE DEVORÉ, SUBLIMATION PRINT ONTO RIB, AND INLAY. FURTHER REFINING AND INCORPORATING THESE TECHNIQUES INTO MY FINAL COLLECTION. EMBRACING A PLAYFUL APPROACH, I ASPIRE FOR THE COLLECTION TO FEARLESSLY CARRY FORWARD THIS AESTHETIC, AVOIDING ANY HESITATION IN BEING BOLD.





- Zip and button fastening
- Vintage upholstery fabric referencing found objects
- Cargo Style Pockets and Short Shape - inspired by street wear
- large 3D pockets
- Heavy weight fabric to maintain rigid structure
- Draw string roche detail
- Thick waistband
- graffiti, knit Devore - jungle bed on industrial machine
- Plying feeder one synthetic yarn one plant fibre yarn







Inlay pink mohair  
 - hand printed sublimation print  
 - flocking and forking  
 - fall from flock

Devore  
 - Bulk yarn and cotton

Devore  
 - Acrylic and viscose

Varied rib  
 - polyure and mono filament  
 - increasing no  
 - sublimation print and flocking

Peaked sample  
 - Sublimation print on top  
 - Bulk thread and mono filament



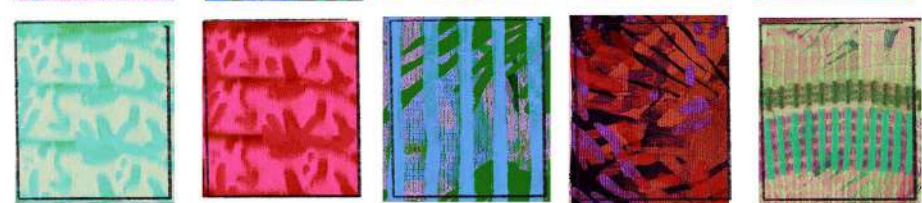
Varied inlay  
 - Bulk thread with mohair  
 - sublimation print on top

Thin rib  
 - mono filament and bulk thread  
 - sublimation print, flocking and forking

Wide inlay  
 - mohair and bulk thread  
 - sublimation print

Devore  
 - lurex and mono filament  
 - Pure cotton

Devore  
 - lurex and mono filament  
 - viscose



Inlay rib set up 5x5

Synthetic bulk threads

Inlay final sample 10x8 set up

pink mohair

Synthetic Bulk threads

Sublimation print with heat press

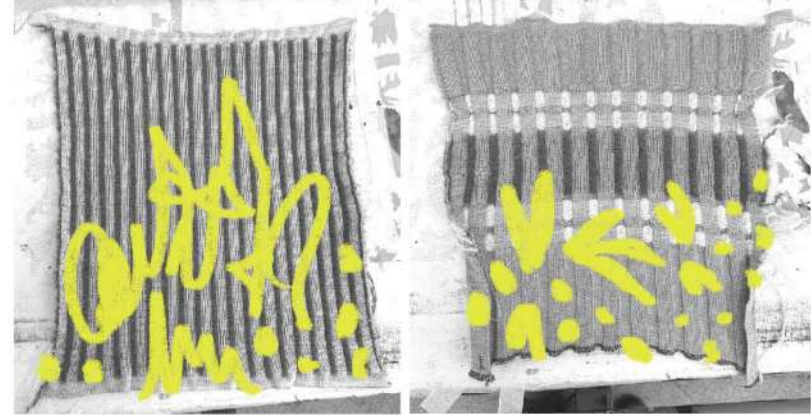
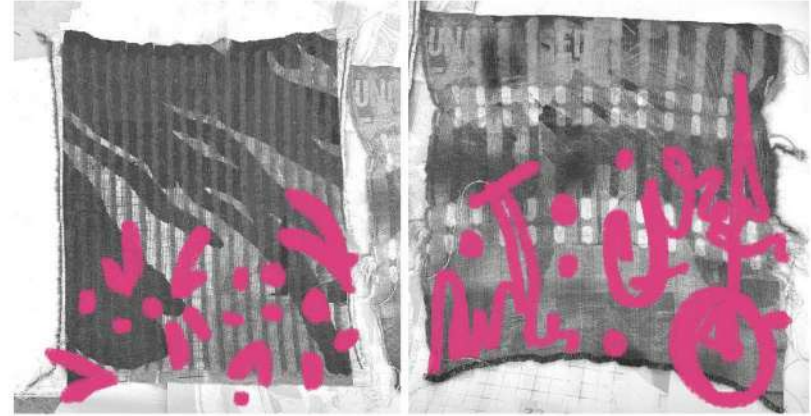
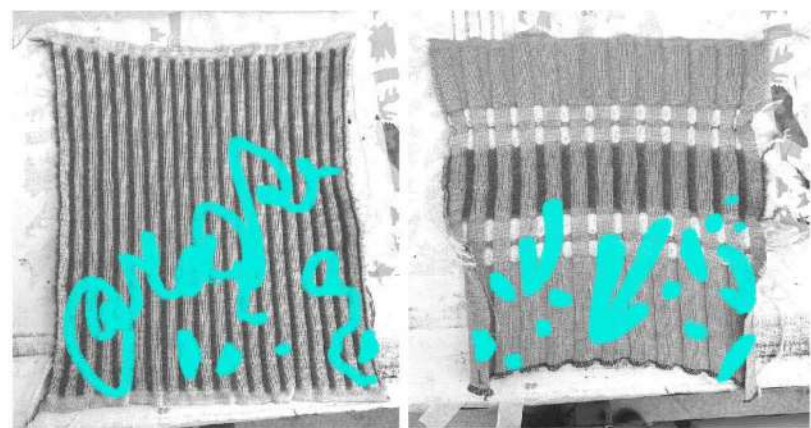
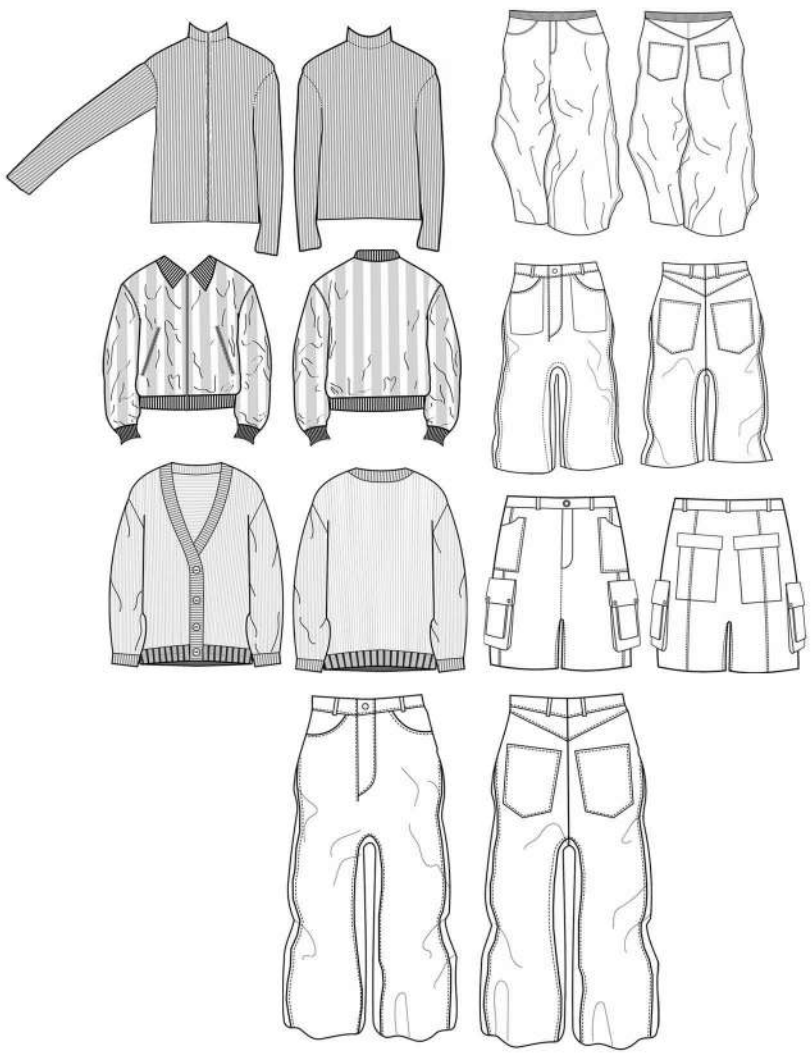
Ready to foil and flock on top of

Varied mohair and alpaca stretch yarns

alternating colours

Sublimation print with heat press

ready to flock print on top of





SUBLIMATION PRINT ONTO RIB  
2X2 RIB SETUP ON 10 GAUGE INDUSTRIAL MACHINE

YARN COMPOSITION:  
BULK THREAD  
100% POLYESTER



SUBLIMATION PRINT ONTO RIB  
4X2 RIB SETUP ON 10 GAUGE INDUSTRIAL MACHINE

YARN COMPOSITION:  
BULK THREAD  
100% POLYESTER  
100% WOOL



SUBLIMATION PRINT ONTO RIB  
INCREASING AND DECREASING RIB SET UP ON 10 GAUGE INDUSTRIAL MACHINE

YARN COMPOSITION:  
BULK THREAD  
100% POLYESTER



DEVORÉ SAMPLE WITH FLORAL PRINT

2X2 MOCK RIB INTO SINGLE BED KNIT ON 10 GAUGE INDUSTRIAL MACHINE

YARN COMPOSITION:  
ORANGE LUREX  
COMP: 100% POLYESTER  
PINK COTTON  
COMP: 100% COTTON



DEVORÉ SAMPLE WITH ABSTRACT GRAFFITI PRINT

2X2 MOCK RIB INTO SINGLE BED KNIT ON 10 GAUGE INDUSTRIAL MACHINE

YARN COMPOSITION:  
DAYTONA  
COMP: 100% POLYPROPYLENE  
ITALIAN SHINY VISCOSE  
COMP: 76% VISCOSE 24% POLYAMIDE



DEVORÉ SAMPLE WITH ABSTRACT GRAFFITI PRINT

2X2 MOCK RIB INTO SINGLE BED KNIT ON 10 GAUGE INDUSTRIAL MACHINE

YARN COMPOSITION:  
BULK THREAD  
COMP: 100% POLYESTER  
PINK COTTON  
COMP: 100% COTTON





MOHAIR INLAY AND SUBLIMATION PRINT  
 10X10 INLAY SET UP ON 10 GAUGE INDUSTRIAL MACHINE  
 SUBLIMATION DYE BY HEAT PRESS

YARN COMPOSITION:  
 ORANGE ALPACA  
 COMP: 50% ALPACA 34% POLYESTER  
 14% POLYAMIDE 1% ELASTANE  
 BULK THREAD  
 COMP: 100% POLYESTER



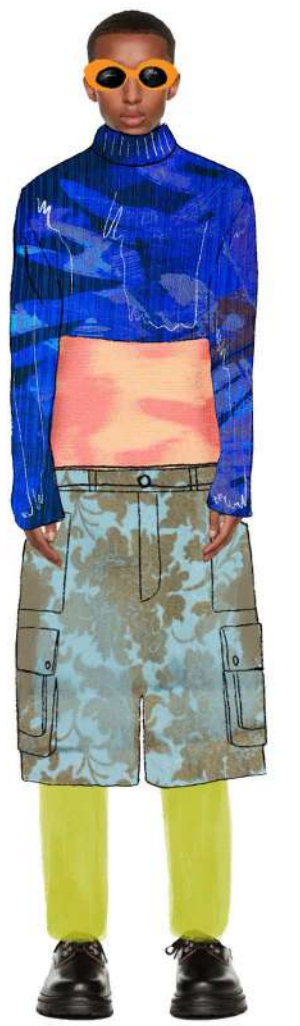
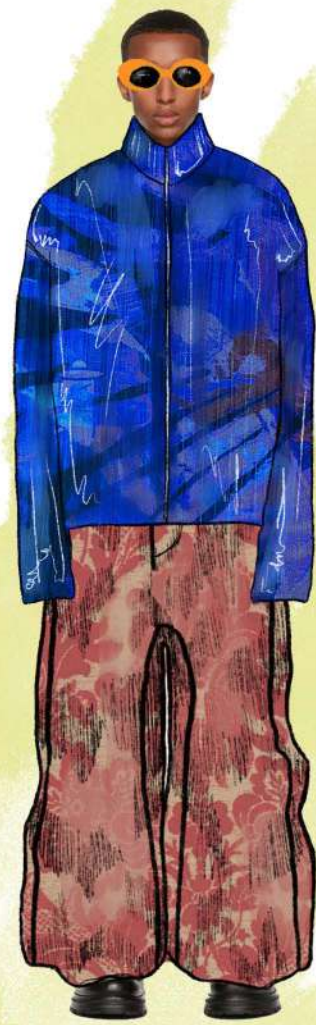
MOHAIR AND ALPACA INLAY WITH SUBLIMATION PRINT  
 8x8 INLAY SET UP ON 10 GAUGE MACHINE  
 SUBLIMATION DYE BY HEAT PRESS  
 SCREEN PRINT FLOCKING ON TOP OF KNIT

YARN COMPOSITION:  
 ORANGE ALPACA  
 COMP: 50% ALPACA 34% POLYESTER 14% POLYAMIDE 1% ELASTANE  
 BULK THREAD  
 COMP: 100% POLYESTER  
 YELLOW ALPACA STRETCH  
 COMP: 20% ALPACA 50% NYLON 27% ACRYLIC 3% ELASTANE  
 ITALIAN MOHAIR BLEND  
 COMP: 16% MOHAIR 17% WOOL 49% POLYESTER  
 2% ELASTIC



MOHAIR INLAY WITH SUBLIMATION PRINT  
 8x5 INLAY SET UP ON 10 GAUGE MACHINE  
 SUBLIMATION DYE BY HEAT PRESS  
 SCREEN PRINT FLOCKING AND FOILING ON TOP OF KNIT

YARN COMPOSITION:  
 ITALIAN MOHAIR BLEND  
 COMP: 16% MOHAIR 17% WOOL 49% POLYESTER 2% ELASTIC  
 BULK THREAD  
 COMP: 100% POLYESTER





individuality  
 identity → self-expression  
 visual language is created within a city - formed from small aspects of urban life → collaboration  
 litter, decay, graffiti  
 How do we interpret everyday visuals of urban life - what is overlooked, forgotten  
 How is the urban space relevant to personal identity and style? → community

# LOST BUT FOUND

USING KNIT AND PRINTED TECHNIQUES TO DEVELOP SAMPLES THAT CAPTURE THE BEAUTY OF DECAYING CITY OBJECTS IN THE EXPLORATION OFFICE TIME, CHANGE, AND URBAN TRANSIENCE. FINDING INSPIRATION IN OVERLOOKED ELEMENTS, IT TRANSFORMS DECAY INTO A VISUAL NARRATIVE, SHOWCASING TEXTURES AND PATINA. THIS ART REFLECTS LIFE'S IMPERMANENCE AND URBAN EVOLUTION, INVITING VIEWERS TO CONFRONT TIME'S PASSAGE AND APPRECIATE THE STORIES IN NEGLECTED FRAGMENTS, PRESERVING A MOMENT IN CITY HISTORY.

urban art is created from contrasts - in spaces/buildings/textures/colors  
 individual elements combined → sporadic → chaos → contrasts  
 decay → Big vs Small  
 Each global city holds personality within their attributes elements are unique to specific area.



