

GIORGIA MONTESANO

PORTFOLIO

Instagram: [giorgia_mon.textiles](#)

Email: gia.montesano2@gmail.com

Contact: +447394362262

In my fashion portfolio, I showcase my understanding of fashion trends, and the technical aspects of knitwear design. I showcase an understanding of market, and the use of color, proportion, and silhouette. Drawing from my Italian heritage, I've blended traditional and contemporary elements to create designs that strike a balance of low and high fashion. I focus on creating knitwear pieces that are both technically impressive and appealing to the market. I demonstrate my strength as a designer by blending creativity with technical skill. My designs are not only visually striking but also commercially viable, meeting the needs of today's fashion-conscious consumers. As I continue to develop as a designer, I aim to push boundaries and explore new ideas while committing to creating designs that are innovative, stylish, and relevant.

'ACTIVE COUTURE' COLLECTION

My 'Active Couture' collection is the intersection between traditional and contemporary sportswear influences. The inspiration is taken from the combination of materials and silhouettes, and my aim is to design garments that act as statements. The project combines high fashion elements with unexpected materials such as neoprene and lace, to create textures and shapes. The final designs of my collection incorporates volumes on different parts of the body with more fitted silhouettes, as well as colourful and contrasting stripy cuffs, high necks and waistbands to bring the 'sporty' element.

The Color palette takes inspiration from retro cyclewear garments, which traditionally are vibrant and contrasting.

My collection ultimately consists in a sportswear aesthetic but with details and final silhouettes which are elegant.

This collection is designed for fashion forward individuals who are seeking unique and statement making garments for special occasions. My target audience and muse includes individuals who appreciate creativity, innovation, and the combination of traditional with modern influences. They are likely to be involved in or have an appreciation for the fashion and art world, understanding high and low fashion combinations.



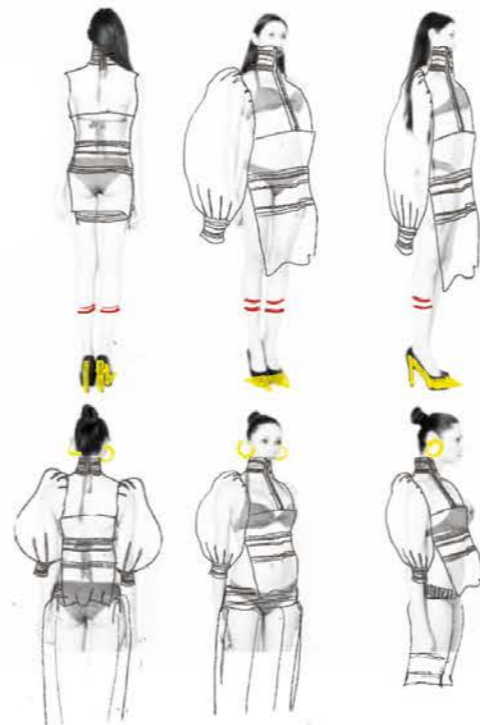


Handmade lace
with sample
lace

Figure skater Jane
Sui Chicago 1992



Puffy
lace sleeves



5-rib ribbed
lace stripes

Rag Dribed Stray Rib Gau
Knitted into Polypropylene
Mock Rib - linked to Loran
Black lace knitted on Domestic
Machine.



MARCA
my name
is the
early 20s



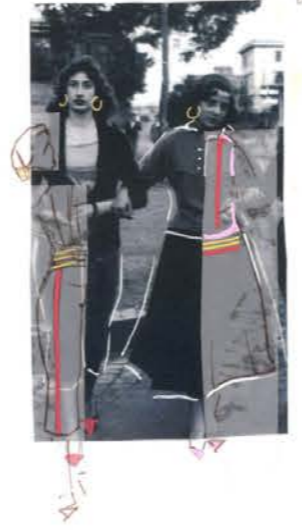
Suba Jersey e
Neoprene Strape
Sublimation print logo



Suba Jersey
with ribbed
lace Strape
Knitted on 2 gauge
Dubied in 1x1 Rib



girls in Traditional Italian clothing



1960's
FERDINANDO SUANNA
Traditional Italian clothing



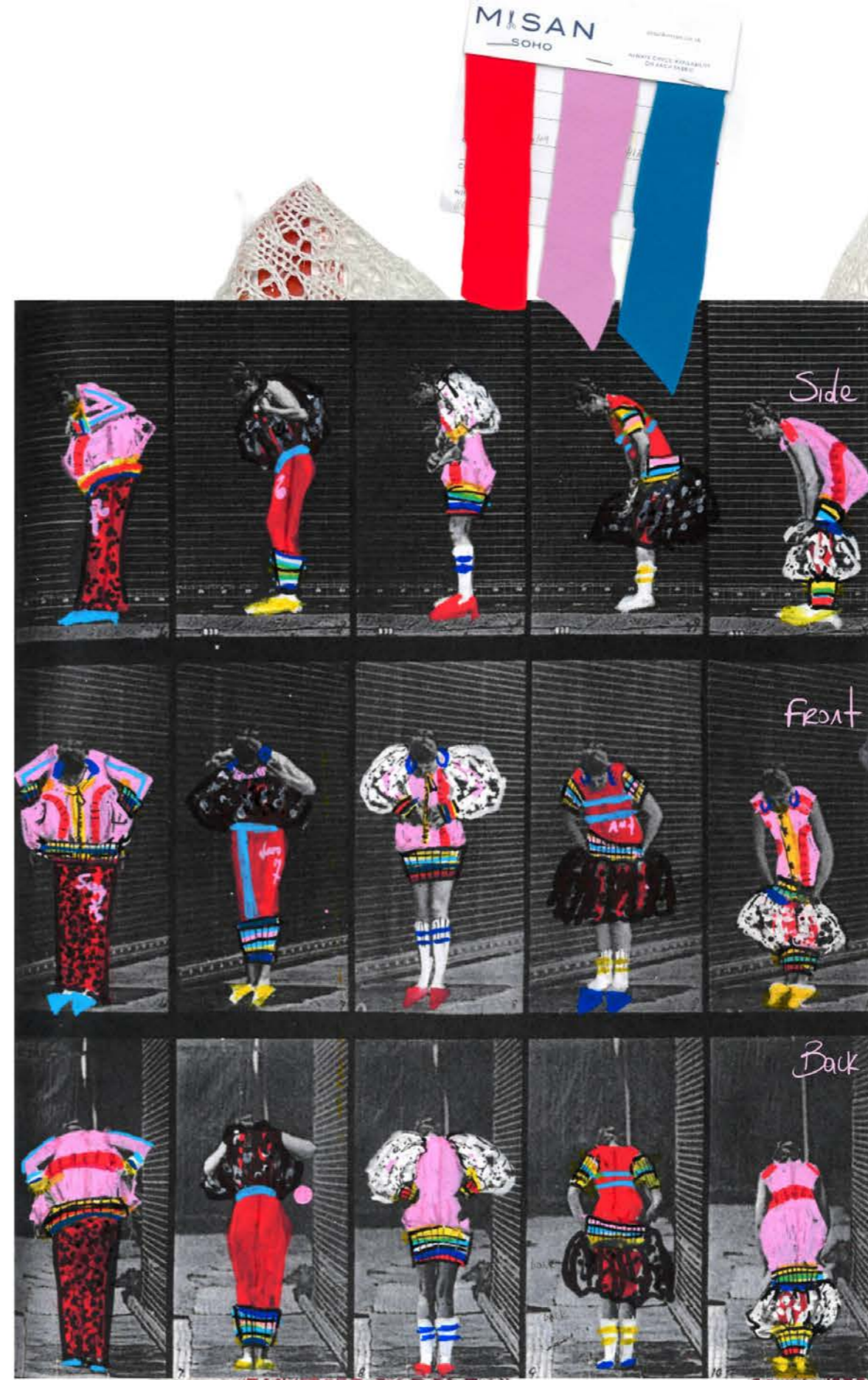
Traditional Italian
Black Lace Coat



Mario



laces
Strape



Standard gauge
Domestic Knitting Machine
Fine linen lace
in black and white



archive from Class



12 gauge Dribed
1x1 Steep Rb
linked to pink scube
Jersey and Fine linen lace



Sicily - Ferdinando Scavano



Red Stride
New opening/Dribled
skirt/steep
- light blue/stripes
on shoulder 76
and 80mm



==



MiaMara
ROMA

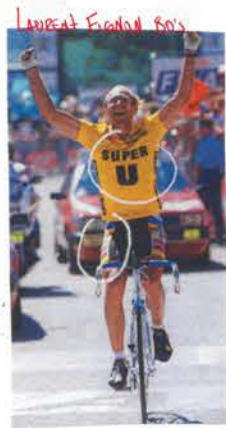
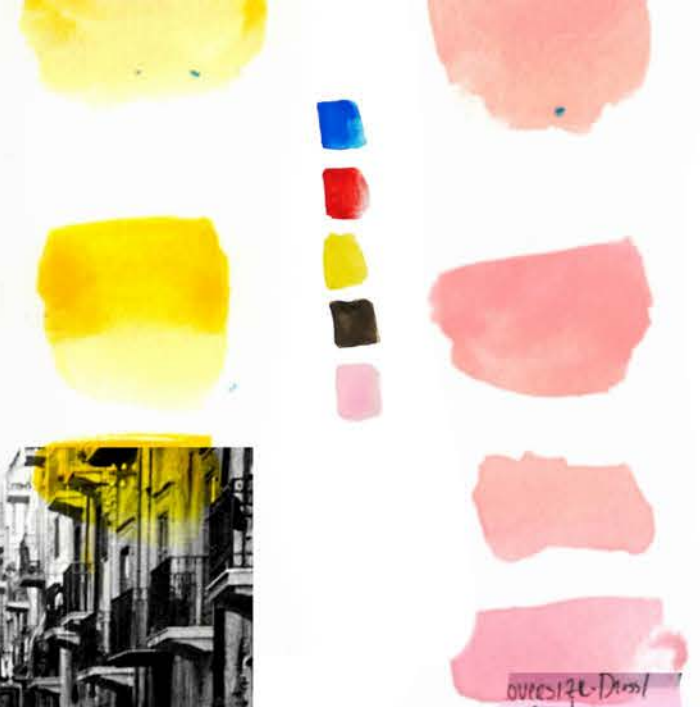
Screen Printing logo



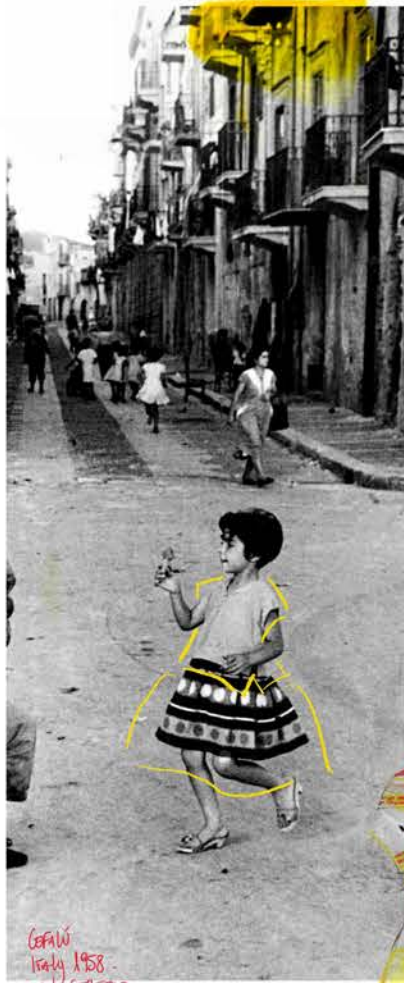
Polycarbonate
Steep Kuit
12gauge Dribed
Mock Rb going
into plain Kuit



Barnding the necks
Neoprene 75/80cm Jersey
help to create structure



Laurent Froidon 80s



Cefaw Italy 1958 - Enzo Cellerio

oversize - Demi Pouch



Bulou skirt attached to Demi Underneath

Digital Collage



Neoprene/suede half skirt shape future



oversize - Demi



Mock Fit - Skirt - Pouch Shape

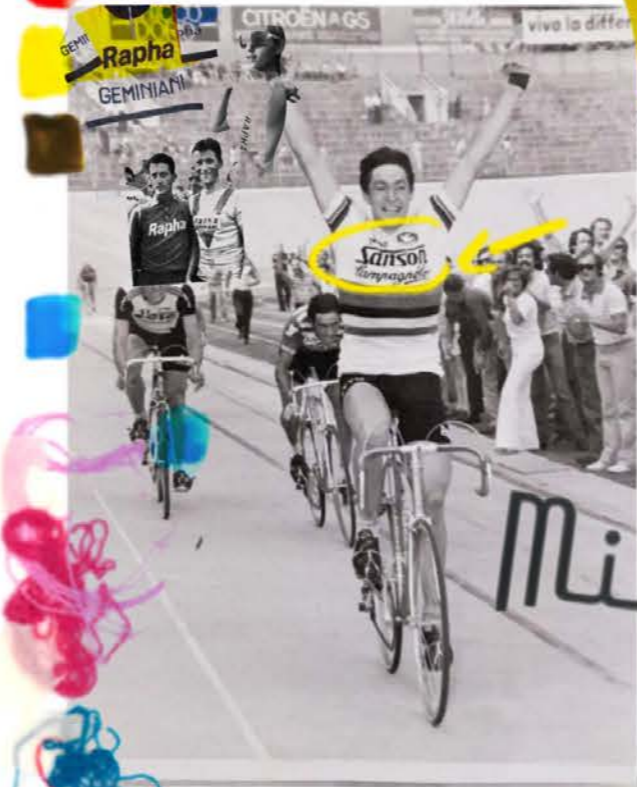
Pouch like skirt

two Annells - No Shaping





12 gauge Dribled
4x1 Kb
Striped lycra



Screen Printing
Design to replicate
existing clothing
graphics



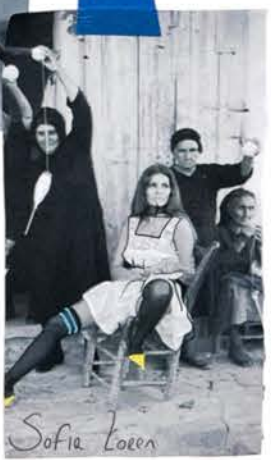
SANO 76

MIAMORA
Roma

12 gauge Dribled
Mock kb
polypropylene Stripes



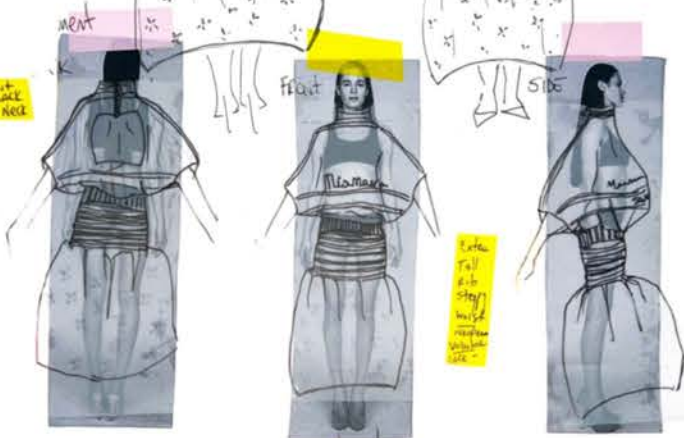
Neoprene Bonded
to lace
worked to 12 gauge
ribbed with in
lace



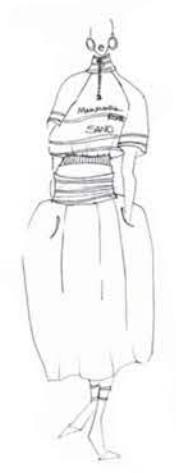
12 gauge Dobbed
Mock Rib
Polypeptelace,
lyca term and
Screen pantol logo



1/4 in cut out
square hole
20" at the neck



1/4 in cut out
square hole
20" at the neck



Design Ideas

one seam -
only side
some
lace
to lace



Gallon & linen
knitted lace
to create structure
in a garment -
linked to fine
gauge lycra 88
to further draw
in the knit
and add volume.



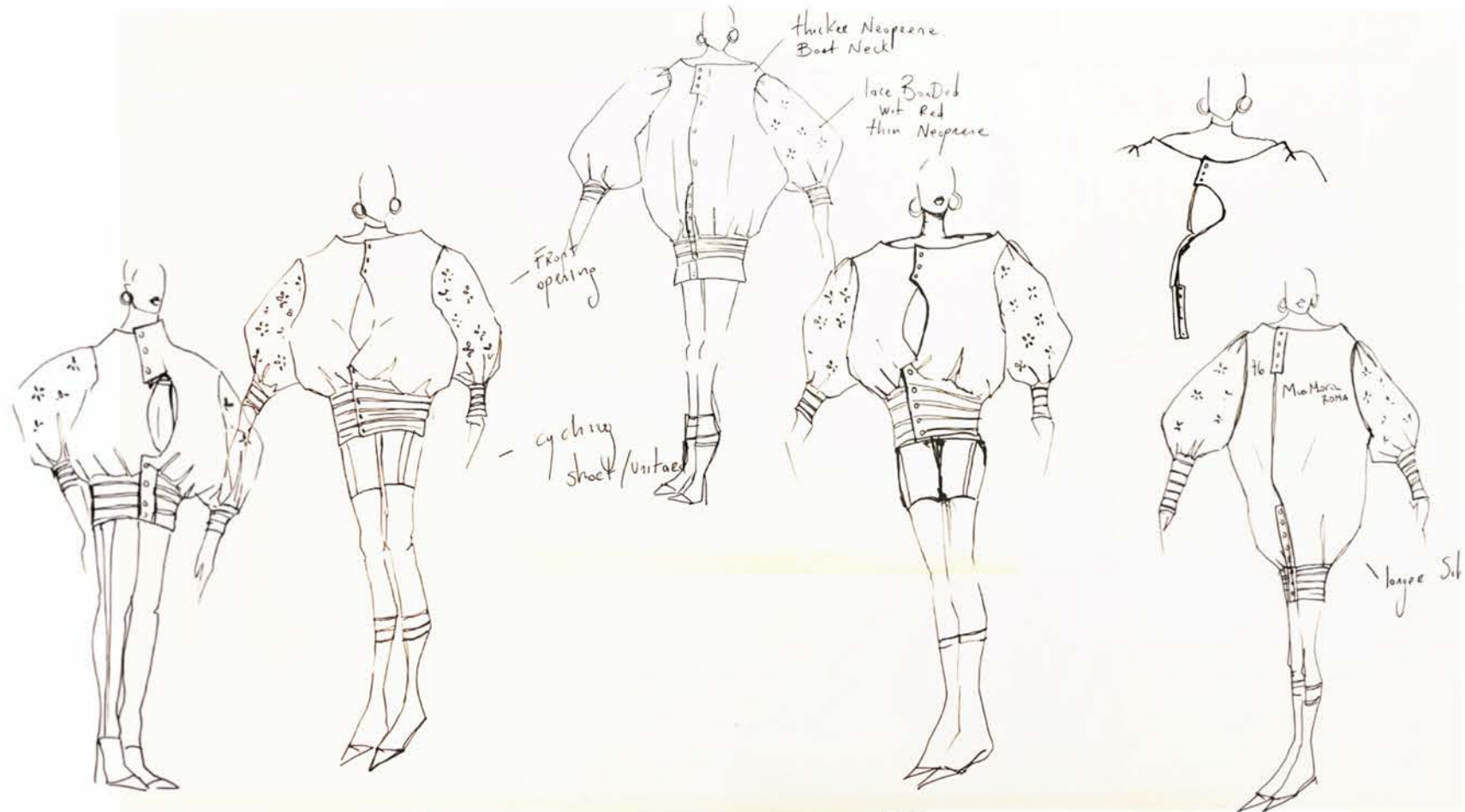
Jo Flo

Napeene
sample mixed
to fine gauge
stays 088 -
thick Napeene
to hold shape
and create volume.



Leigh Alexander

Archive BALENCAGA



thicker Napeene
Boat Neck!

lace Banded
with Red
thin Napeene

Front opening

cycling
short/units

Large Sil



Collage Development



Collection Development





Mood Board

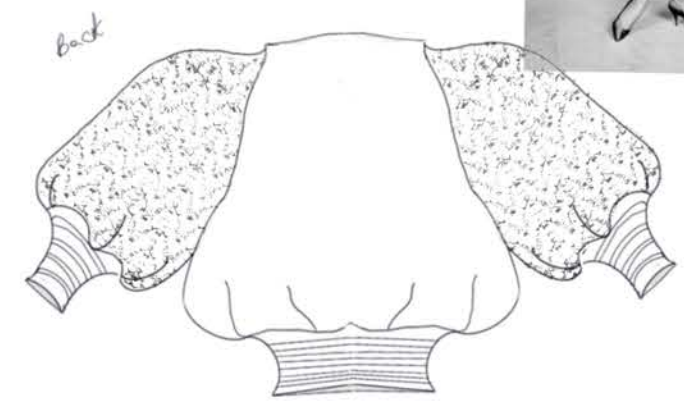


Balesunga Archive

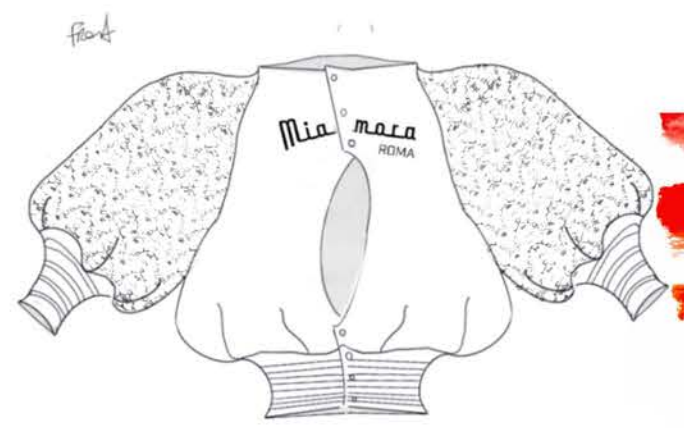
final look
Hees look



-gallon lace sleeves
-knit
-cuba Jersey
-ribbed elbs



back



front

Market



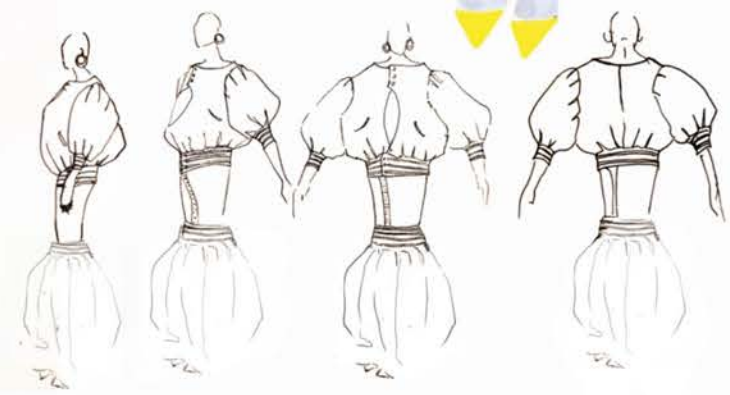
Gucci x Adidas 2011



Allin 2012



Gucci Cruise 2024





ACTIVE COUTURE COLLECTION

A/W 24/25

