

L O T T I E C O R N W E L L

lottiecornwell@gmail.com

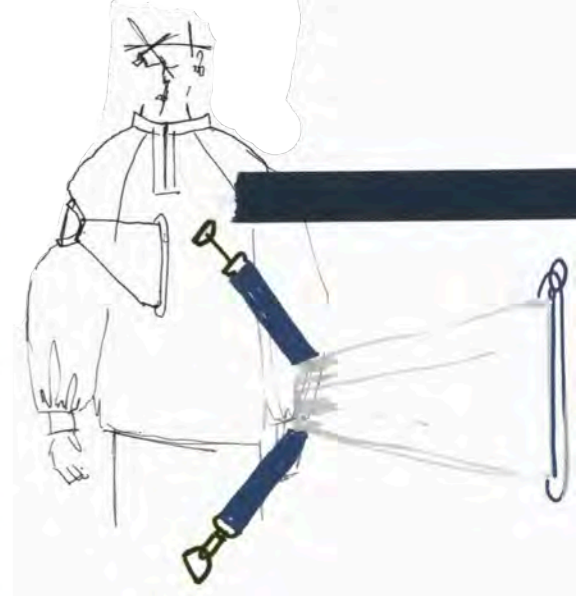
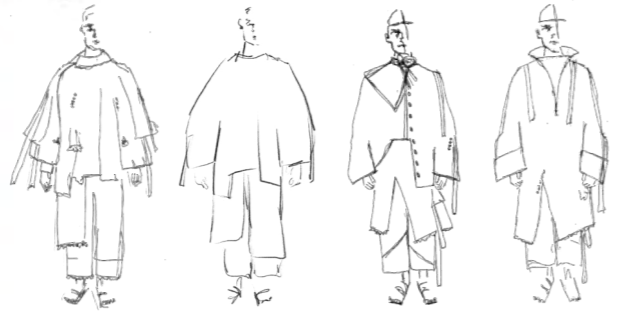
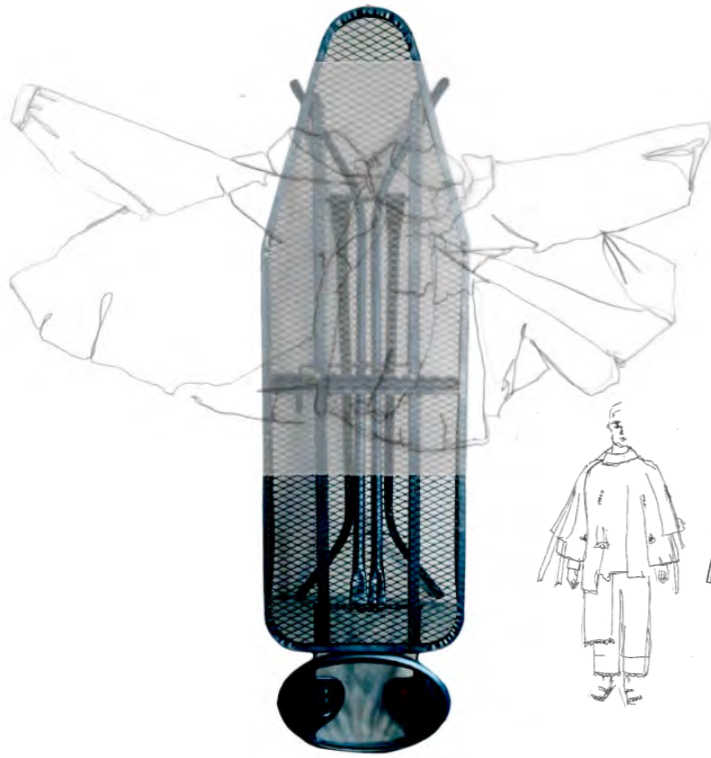
07443503580



## D Y S F U N C T I O N A L

An A/W 2025 menswear collection to address the correlation between declining mental wellbeing and excessive technology use that confines people indoors. Exploring outerwear to encourage outdoor interaction and the reconnection with nature. Embracing irony, broken, useless or dysfunctional elements are incorporated to symbolize the complexities of modern society. This approach adds a playful yet eerie vibe to the aesthetic. Blending archival utility wear, technical accessories and vintage shirting, there are contrasting aesthetics to craft a visually engaging collection. Juxtaposing elements from various eras and styles, the collection aims to tell a narrative of breaking free from toxic societal norms.





Technical Accessories

High Tenacity Ripstop Nylon



C.P. Company 1988

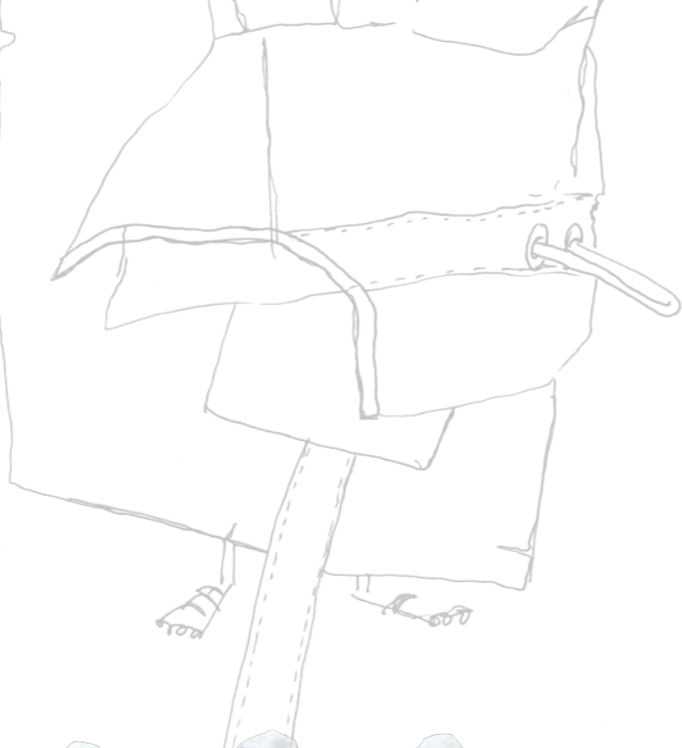


Waterproof Camo Smock



Applied Art Forms  
E675  
Japanese Canvas

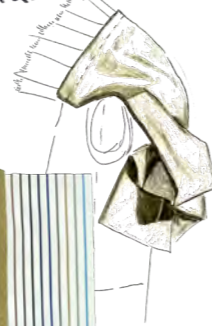




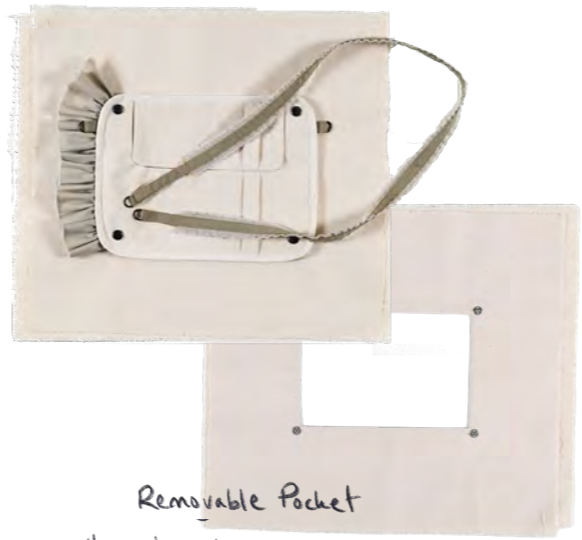
Increase Space for Backpack/  
Integrated Bag Straps  
Within the Jacket

Lower Back

Modular



Combining Shirting  
+ Utility/Sportswear.  
- Cotton Shirting with  
Waterproof tape, grosgrain  
Ribbon + Space fabric.



Removable Pocket  
HeavyWeight  
Calico







I-D Magazine 2008



Arcan Homme+



Burg Styles Vogue 2010



V.S. 2010



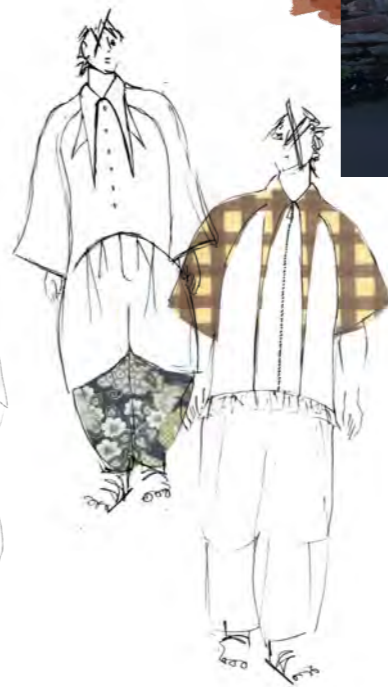
Thom Browne 13



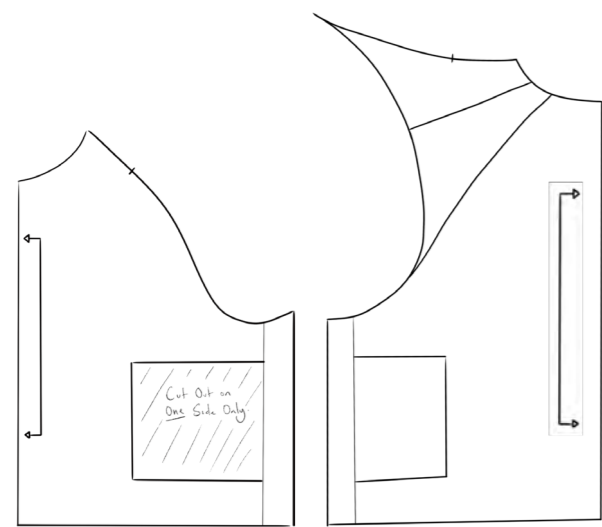
View A/W 21/22



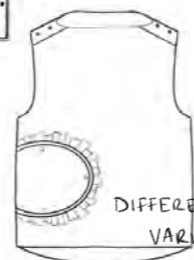
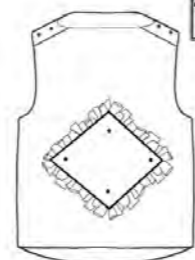
vintage patterns





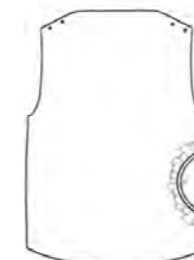
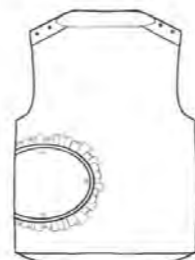
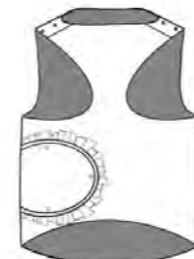


CENTRAL UTILITY POCKET - RUFFLE TRIM



DIFFERENT POCKET VARIATIONS

Bring Central Pocket to one side of Utility Vests



REMOVABLE COLLAR

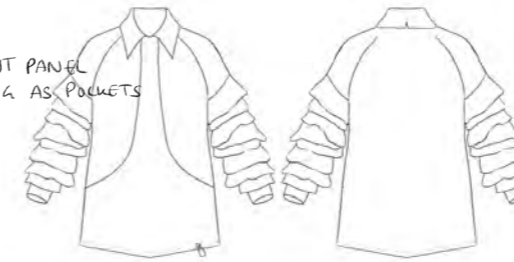


ZIP IN RAGLAN SEAM



UTILITY POCKET

FRONT PANEL ACTING AS POCKETS



CURVED HEM

HIGH-LOW HEM



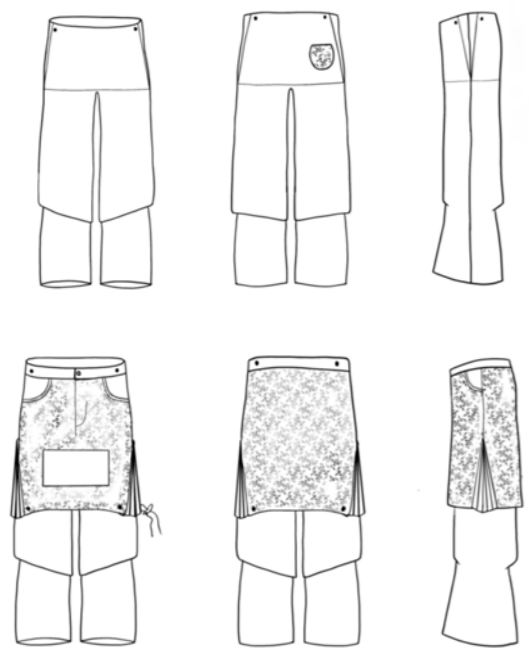
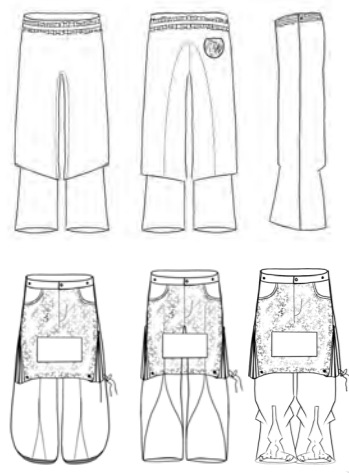
MIRRORED PRINT ON SHIRT



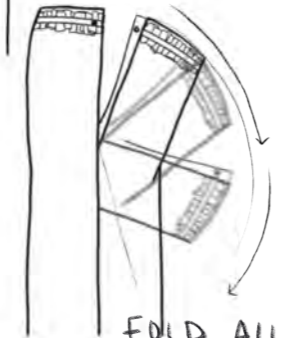
BRAINSTORMING DIFFERENT TECHNICAL DESIGN POSSIBILITIES







SIDE OPENING  
- NO FRONT FLY



FOLD ALL THE WAY  
DOWN TO CREATE  
SKIRT?



TOILE ①



Take in at  
Bottom of skirt to  
fit waist



After Darts in  
the skirt at the  
Bottom of skirt to  
crease - fabric fit



Pockets  
are made of  
skirt.

Skirts to  
fill in Gap  
when down.



ZIG ZAG STITCH  
DETAIL ON ZIPPER FLY

TOILE ②



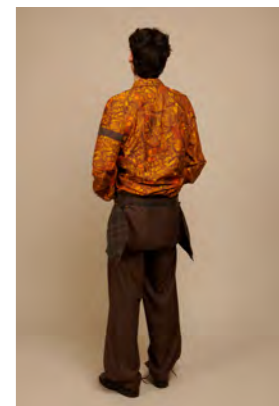
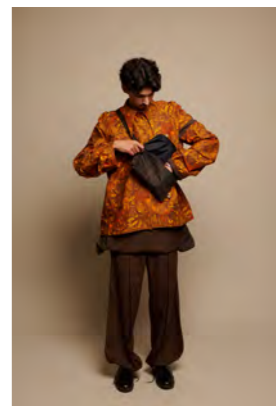
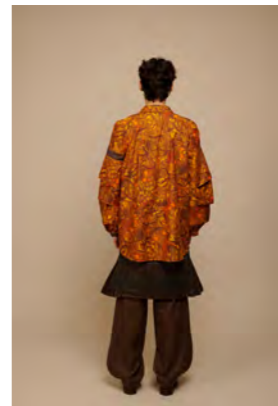
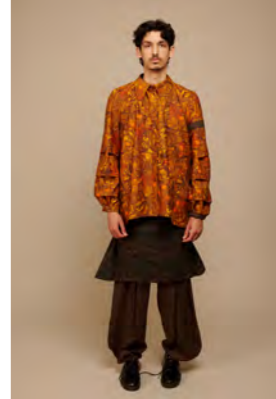
Take in  
at Side  
to  
Prevent  
creasing  
and  
Maintain  
shape.













# KIKO KOSTADINOV

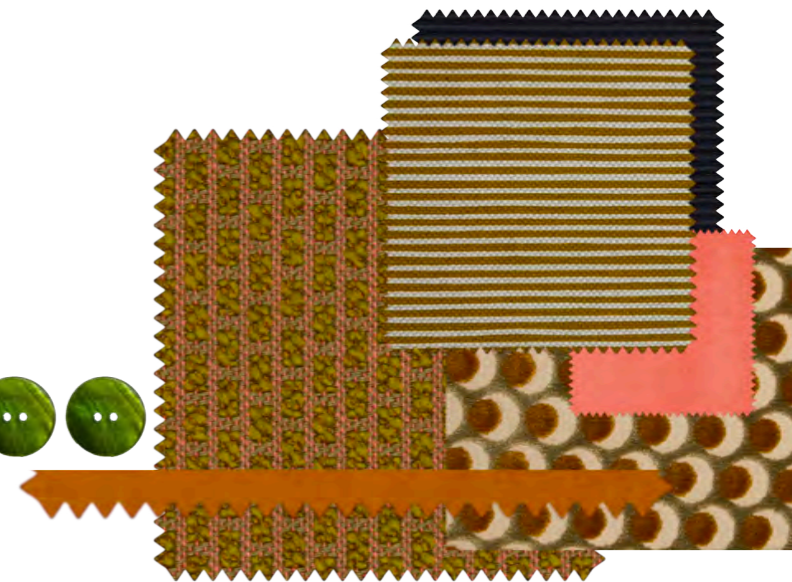
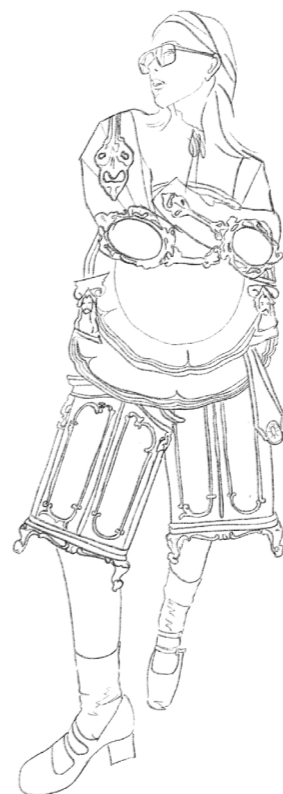
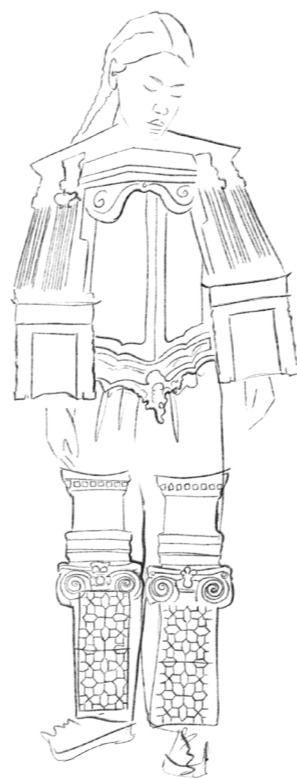
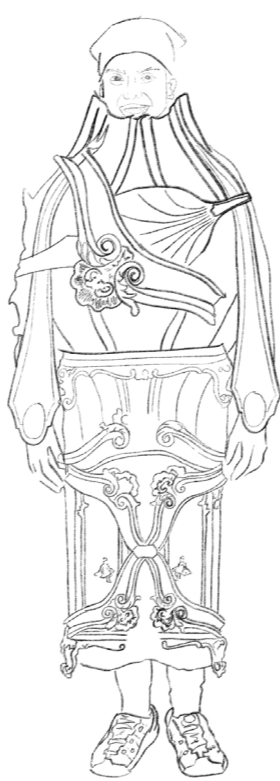
XLOTTIE CORNWELL



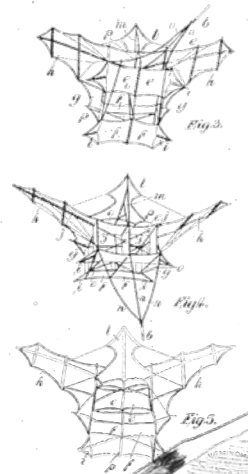
A design sprint presenting a speculative collaboration for Kiko Kostadinov to explore and revive the appreciation of quality craftsmanship within the mass-produced industry.



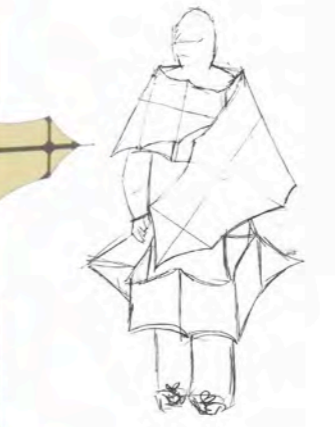
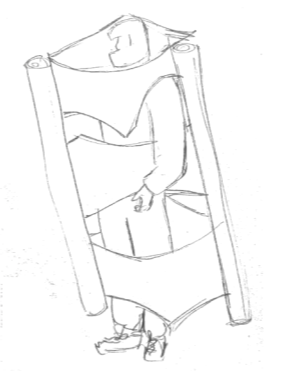
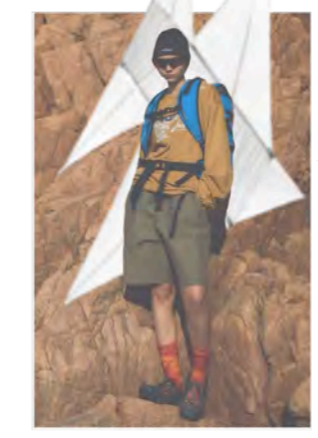
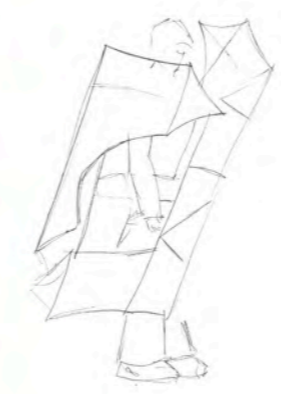








IGNITE THE SENSES



# EAT WIND

Design Sprint for an Autumn/Winter 25 collection to ignite child-like play in young adults to encourage facing harsher elements in nature. Wind is used as a research topic as it is commonly disliked and the collections aim is to become a glimmer on a more dreary day.

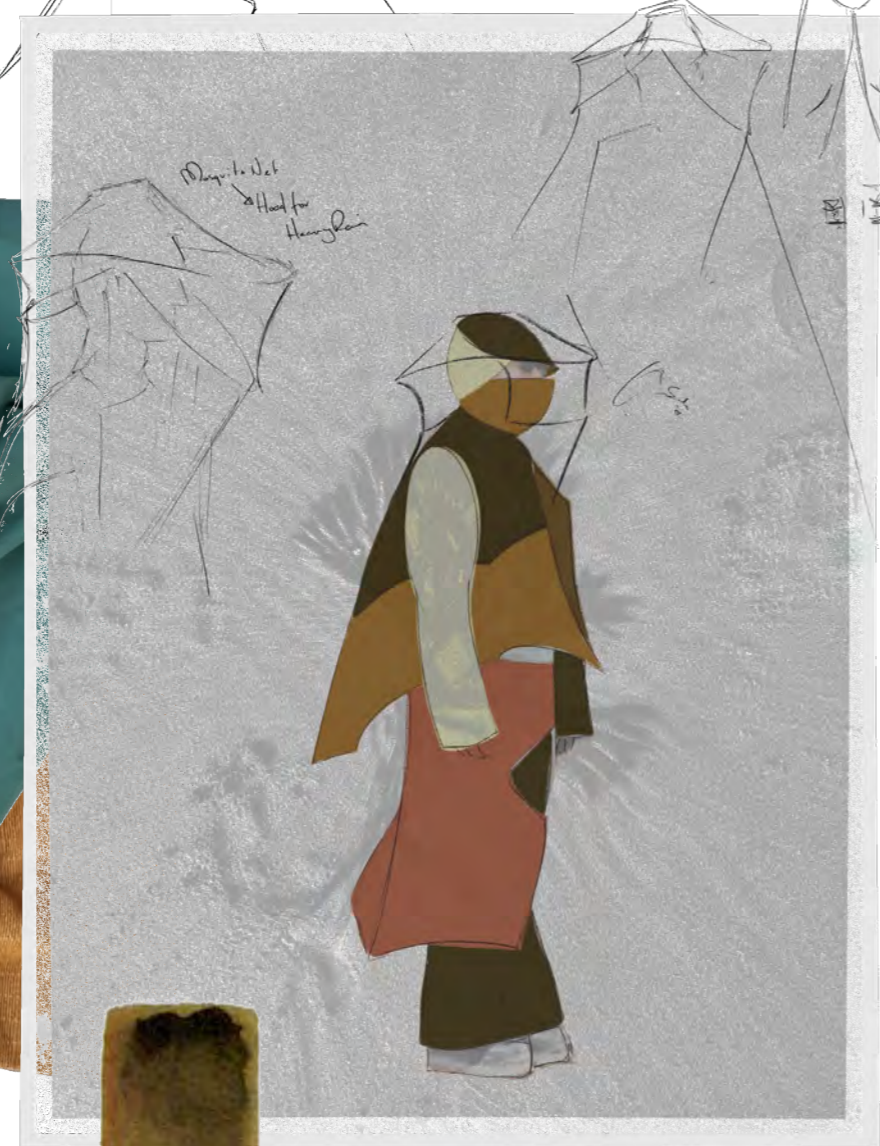




GROSSGRAIN RIBBON SOURCED FROM RAEURN

UNIVERSAL COLOURS REMNANT - 2L WATERPROOF FABRIC 140GSM WITH A GRAPHENE MEMBRANE

HOWE - RECYCLED RIPSTOP



*Design Note  
→ Hood for  
hangover*

*Asymetronic  
Punk*

*Ribbed  
Sleeves*



OLIVIA MAREQUE



