

PRETTY AS
A PIN UP



A String of Pearls.
What a delight to a woman is a long
string of pearls. A treasure is that, as it
can be used so many ways. Perhaps you
have already used it to ornament a
frank, and now sketched are a few of the
latest ways—



SKIRT SUIT
REINVENTED



THERE FOR THE MALE GAZE



TAILORING CONSTRUCTION



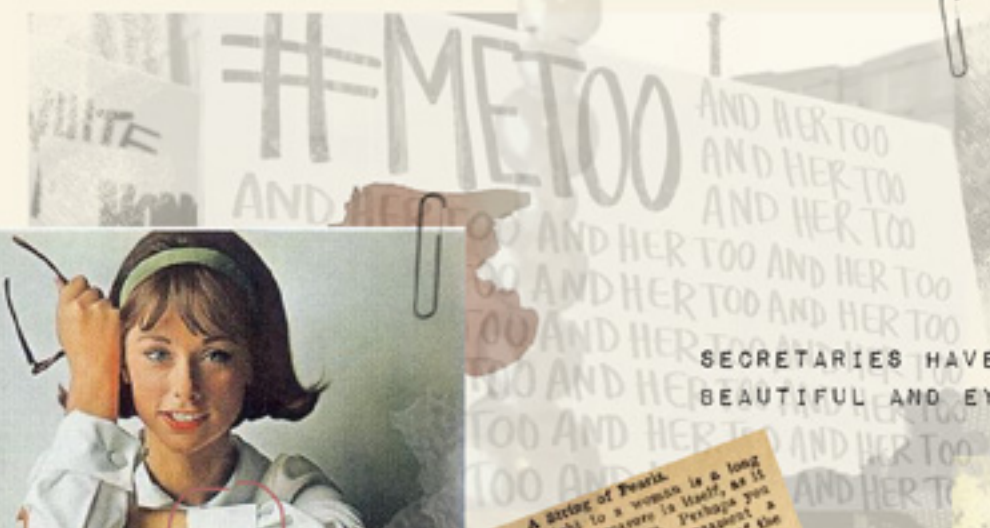
SECRETARIES HAVE TO BE
BEAUTIFUL AND EYE CANDY



corporate
queen

CONCEAL AND REVEAL

METOO MOVEMENT FOR FEMALE
SEXUAL HARRASMENT IN
THE WORKPLACE



EXAGGERTAED
HOURGLASS FIGURE



SCREW
SEXISTS

CONCEPT

SWINGING 60'S MOVIE
WITH PENCIL SKIRTS



WORKPLACE OBJECTIFICATION
REINEVENTING OFFICE WEAR



50'S ADVERT ENCOURAGING WOMEN TO BE A SECRETARY

A News Chronicle Publication

May 1951

Office Girl

NINEPENCE

COLOUR AND FABRIC

SATIN PIPING

MIXED PEARL BEADING

Electrifying Difference

1000 CONTEST FOR OFFICE GIRLS: See page 18

FAUX LEATHER

STRETCH GLITTER

HEAVY TEXTURES

COTTON SHIRTING

KNITTED TEXTURED SUITING

SILK

SUITING

CHIFFON

SATIN SILK

STRIPED MESH



MUSE

MONICA BELLUCCI X KAREN MULDER

REOCCURRENCE OF
DECOLLETAGE ON SHOW

INNOCENT, YOUNG
PRETTY LOOK

FINDING THE BALANCE OF POWER
IN SEXUALISATION AND LEAVING
FEMALE BODY ALONE



USES SEXUALITY FOR
POWER IN PATRIARCHAL
SOCIETY

MULDER REPEATS RAPE
ALLEGATIONS

EFFORTLESS BLOW
OUT OF CURLS



Monica Bellucci says she
'bothered' by sexual
harassment because it launders



SMOKEY SEDUCTIVE EYES



EMPOWERED STRUTTING

OFFICE WEAR INSPIRED
SEXY FOUNDATION



SAINT LAURENT RTW



ROKH



DRAMATIC PRESEENCE
WHILST REMAINING CHIC

TAILORING REFERENCE



MARKET LEVEL

MASS PRODUCTION
HIGH STREET

BRIDGE BRAND

RTW LUXURY
COLLECTIONS

COUTURE

HAUTE
COUTURE

SILHOUETTE FOCUSED



VALENTINO

DRAPING ON THE STAND
TO EXPLORE AREAS TO
EXAGGERATE

INITIAL SILHOUETTE IDEAS



SILHOUETTE



DÉCOLLETAGE EXPOSURE



COLLAGE EXPERIMENTATION
WITH STRUCTURED
SILHOUETTE BASE



HOURGLASS SHAPE FOCUSING
ON EMPHASISNG HIPS AND
MINIATURE WAIST ILLUSION



MOULAGE SILHOUETTE IDEA
WIDE WAISTBAND AND BIG HIF

50'S PATTERNS INSPIRED DEEP V
NECKLINE AND VOLUMINOUS SLEEVES



EXAGGERATED HIP
SILHOUETTE COLLAGES

LOOK 1

Marcia

PRIVATE SECRETARY



BELOW KNEE LENGTH HEM



COMPLETE
AND
UNABRIDGED



INITIAL TOILE DEVELOPMENT



FINAL LOOK WITH
CONTRASTING FABRICS
TO REFERENCE
SEXUALISATION OF
SECRETARIES AS WELL
AS 50'S TRADITIONAL
SUITING TEXTURES.



TECHNICAL PROCESS

LOOK 1 SKIRT

THE SKIRT AND WAISTBAND WAS TOILED. HERE THE WAISTBAND WAS TOO BIG AND NEEDED TAPERING INTO THE SKIRT SEAM. THIS WAS COMPLETED BY PINNING THE EXCESS UP AND MARKING ONTO TOILE SO THIS COULD BE TRANSFERRED TO DRAFT AND PATTERN PIECES ALTERED.

NOTE ONCE THESE EDITS ARE MADE THE PANELS ARE PIVOTED TOGETHER ON THE SEAM LINE TO CHECK THEY ARE STILL THE SAME LENGTH AND MATCHING.



CALICO PATTERNS WERE TRACED OFF AND NOTCHES ADDED TO MAKE SURE CURVED EDGES MATCHED UP AND STOPPED STRETCHING THAT DISTORTS SHAPE.

SKIRT TOILE GAPIING AROUND WASITBAND SO PANELS NEEDED TO BE PULLED UP. MARKED ON. TAKE OFF BOTH WAISTBAND AND SKIRT PANELS



THE CALICO IS PINNED ON THE GRAIN DOWN THE CF AND CB MAKING SURE TO PIN LOOSELY FROM THE CURVES IN THE WAIST. ENSURE THIS ISN'T TOO TIGHT TO STOP MOVEMENT

FINAL SKIRT TOILE

THE WAISTBAND SHAPE IS CREATED BY USING DRAPER'S TAPE TO MARK SHAPE ONTO MANNEQUIN AND THEN USING CALICO TO TRACE OFF PATTERN SHAPES

FINAL MANUFACTURE - TO KEEP THE SEAMS FLUSH AND REDUCE BULK ON V SHAPE WAISTBAND HEM THE WAISTBAND PANELS WERE SEWN TO THE SKIRT PANELS SEPARATELY BEFORE SEWING EACH PANEL OF SKIRT TOGETHER.

THE PATTERN PIECES FROM WAISTBANDS. THE V SHAPE HEM WAS LINED UP TO THE SKIRT PANLES. THE WAISTBAND PANELS WERE ALSO CHECKED TO ENSURE THEY MATCHED FLUSH WITH THE SKIRT PANELS FOR A FLUSH SEAM.

TOILE WAISTBAND MATCHED UP WITH THE SKIRT PANELS HOWEVER SEAMS OF SKIRT WERE BAGGY TO THE PADDING SO TAPERING DOWN THE SKIRT SIDE SEAMS 1CM WAS GRADUATED TAPERED OFF FROM EACH PANEL AND WHERE THE WAISTBAND SEAMS NEEDED EXCESS 5MM WAS REMOVED.



SKIRT SUIT INSPO

CURVED NECKLINE -
SOFT FEMININTY

Perceuse des femmes incroyables

INITIAL SILHOUETTE
GESTURES

LOOK 2



DESIGNS IMPROVING SILHOUETTE,
COLLAR AND DETAIL



CF BUTTONS



SKIRT TOILE FITTING



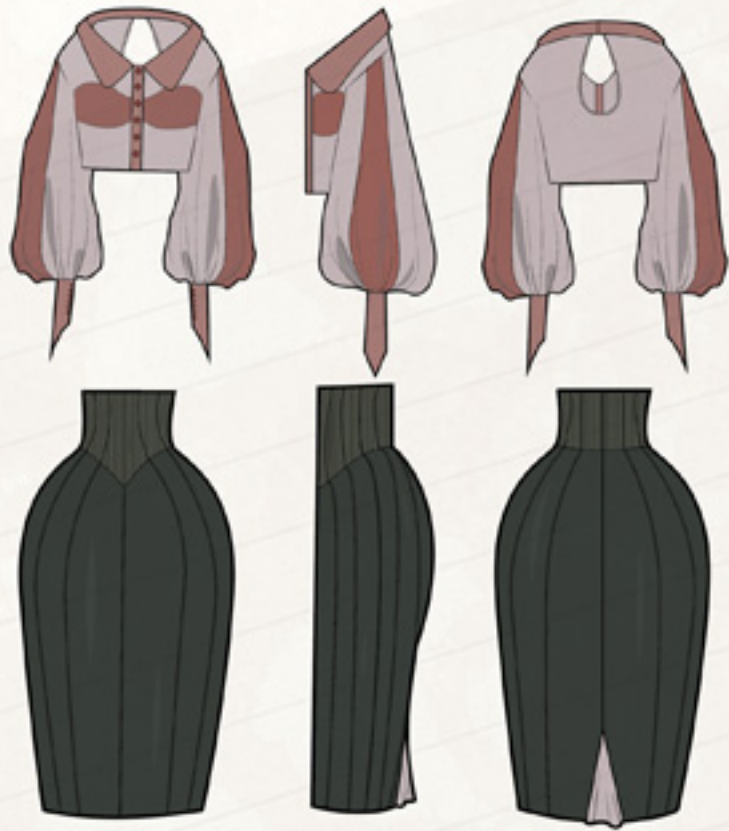
SILHOUETTE
DRAWING PROGRESSION



PEARL BEADING
INSPIRED BY
SECRETARY DRESS
CODES

SILK PIPING DETAIL EMPHASIE
WAISTLINE AND BUST AREA

LOOK 1



LOOK 2

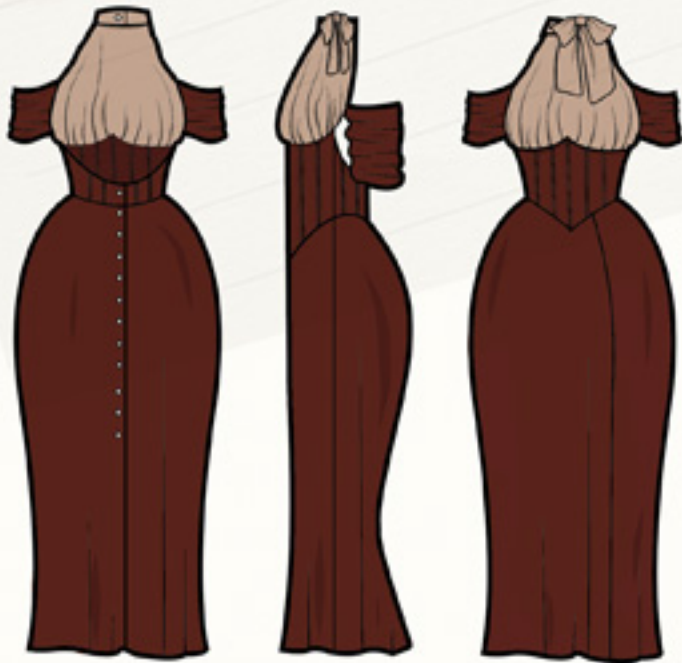


LOOK 3



RANGE PLAN

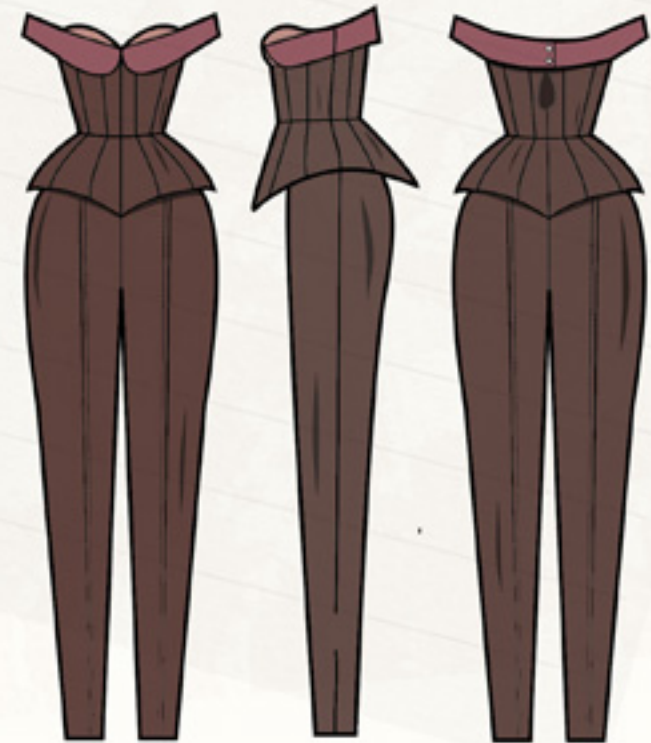
LOOK 4



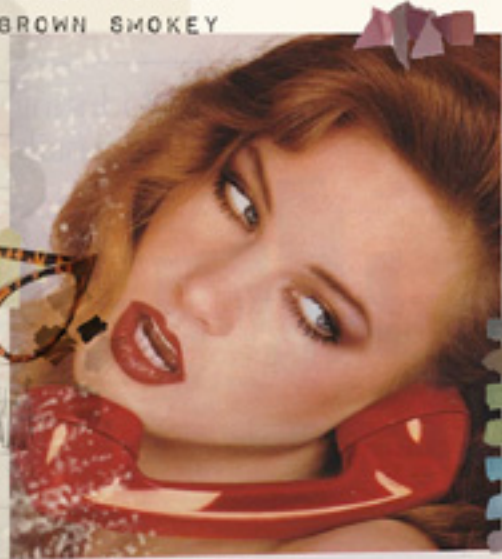
LOOK 5



LOOK 6



DEWY SKIN FINISH
AND BROWN SMOKEY
EYE



MESSY UPDO HAIR WITH
FRONT LAYERS OUT



TOURTOISE SHELL CAT EYE GLASSES



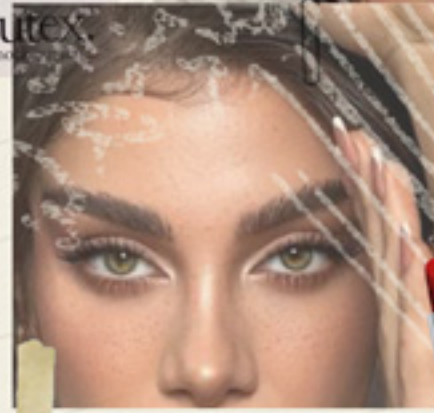
PENS IN HAIR



CREAM PHONE HELD



WINGED EYELINER



BURGUNDY BUCKLE
SLING BACK MID
HEELS



DRAMATICALLY SMUDGED
RED LIPSTICK

LARGE CLIP ON
STATEMENT EARRINGS



PEARL FRENCH PIN

LACE TRIM BLACK
SHINY STOCKINGS



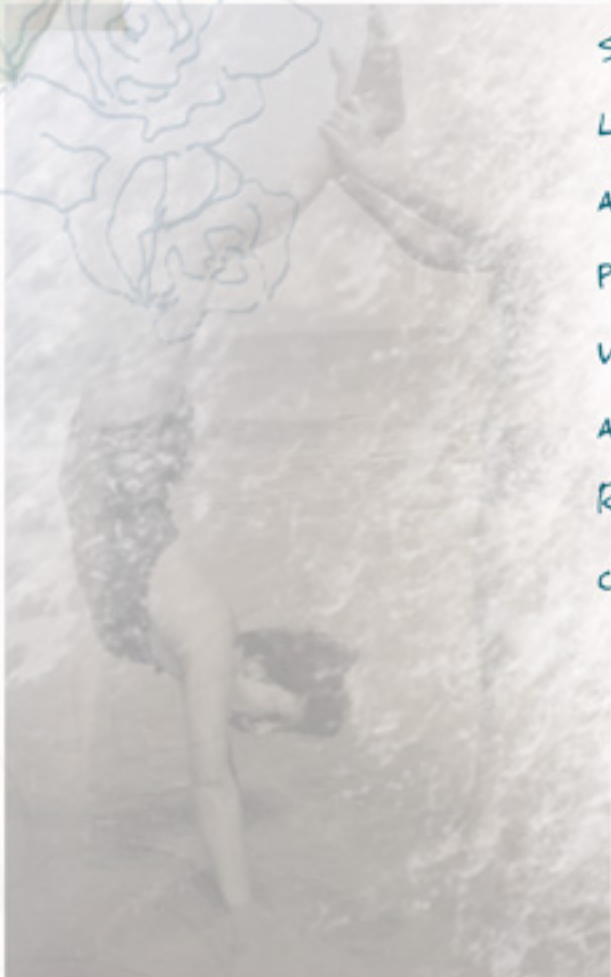
STYLING LOOK 3

Line Up



Written Concept

'YOU ARE MY DIAMOND' IS A WOMENSWEAR SPRING/SUMMER 2025 BRIDGE BRAND LEVEL AIMING TO SIT AMONGST LAUREN BY RALPH LAUREN AND TED BAKER. ROMANTIC ELEGANCE IS THE CORE OF THE COLLECTION, TAKING REFERENCE FROM 1950S FEMALE SILHOUETTES AND NECKLINES. THIS COLLECTION AIMS TO TELL A STORY FROM THE GOOD OLD DAYS BY RESEARCHING MY GRANDPARENTS' LIFE TOGETHER IN ENGLAND. THE AIM IS TO CREATE A FEMININE AND JOYFUL COLLECTION, THIS WILL BE ACHIEVED THROUGH BRIGHT PATTERNS, ROSE PINKS AND SEA BLUE LIGHTWEIGHT FABRICS WHICH WILL BE PLEATED AND GATHERED TO EMPHASISE THE FREEING AND FEMININE CORE OF THE COLLECTION. UNCHAINED BY THE RIGHTEOUS BROTHERS IS A MUSICAL MUSE WHICH INSPIRES A CHERISHING, ROMANTIC ATMOSPHERE.



THE BEST DAY

Concept

REMINISCING ON
HAPPINESS



ROMANTIC ELEGANCE



FLORAL PRINTS



CHERSHING EACH OTHER

GRANDPARENTS'
WEDDING 1963



Elizabeth
you are
my
Diamond

FOREVER LOVED



JOYFUL

SUMMER GARMENTS



CHIC FINISH



HIGHWAISTED HOURGLASS SILHOUETTE



SUMMERTIME 1955



Colour & Fabric



STRIPED SHIRTING

LINEN

STRETCH JERSEY

STRIPED COTTON

TWILL

CREPE

FLORALS

CHIFFON POLKA DOT



EXPLORING FLORAL AND
TEXTURED FABRICS AS PIPING

COLOUR AND PATTERN BALANCE IN COLLECTION

RESEARCH INSPO FROM FLORAL,
STRIPED AND ARGYLE PATTERNS

Pattern & Development



INITIAL COLOURED GESTURES TO EXPLORE SCALE
OF PATTERNS AND STRIPED PATCHWORK INTEGRATION

SAMPLES USING PATTERNED FABRICS
WITHIN A STRIPED PATTERN

Mini Dress Research

DEVELOPMENTS FOCUSING ON
ASYMMETRIC HEM AND BOUND EDGES



CONTEMPORARY FASHION INSPIRED BY 60'S MINI DRESS,
INSPIRING CONTRAST COLOURS AND WAIST EMPHASIS



CENTRAL BUTTON STANDS



DEVELOPMENTS INSPIRED FROM
FLARED OUT MINI DRESS SKIRTS

DROPPED HEM AT
BACK OF DRESS



SHORTS PAIRED WITH HALTER,
SWEETHEART + V NECK NECKLINES

50S RESEARCH SUMMER SHORTS
HIGH WAISTED, CONTRAST COLOURS +
SMALL WAIST ILLUSION

DESIGN DEVELOPMENT LOOKS 4 AND 6



SUBTLE VOLUME IN
SHORTS TO CREATE
HOURLASS SHAPE

Key Garment - Shorts

GESTURES EXPLORING
COLOUR BALANCE



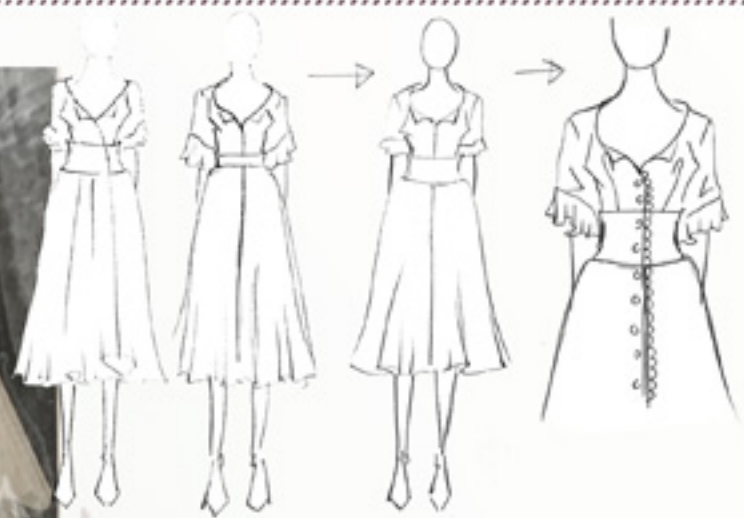
INITIAL LOOK INSPO

Look 3

INITIAL SILHOUETTE
GESTURES, MID CALF
SKIRT WITH DEEP
V NECK



OPEN COLLARS AND FULL
SKIRT INSPO



DEVELOPMENTS EXPLORING VARYING
WAISTBAND AND CF BUTTON FASTENING



SUMMERTIME MOVIE COLLAR INSPIRATIONS



Alter to short
sleeve using
#9001



SLEEVES INSPIRED BY
60S WEDDING DRESS



COLOURED GESTURE OF LOOK,
COLOURED 3MM PIPING ON
FABRIC PANELS

50S PATTERN DRESS LENGTH
AND WIDE WAISTBAND INSPO



Final Illustrations

