

**FMP Portfolio**

**FT6015 Mental Wealth Profesional Life**

**MIKAELA MUSSON-SHEEHED**

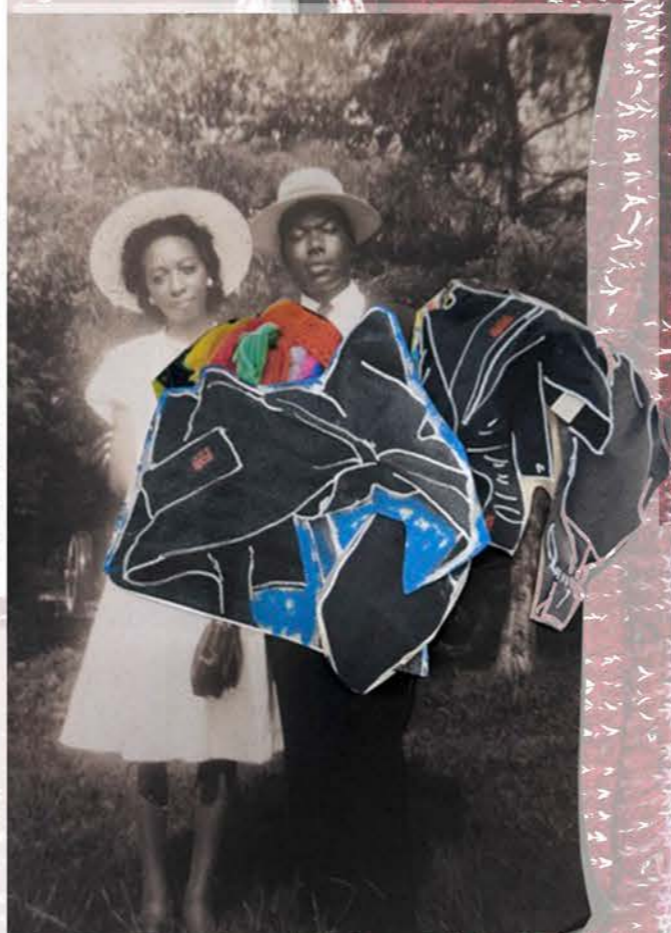


# CONCEPT



*To pay homage is to show respect or attest to the worth or influence of another.*

This collection is a homage to my Bermudian heritage. Infused with the spirited movement of dance, capturing the essence of both tradition and contemporary style. Inspired by my father and great-grandfather, who are both engineers, it integrates elements of workwear, tailoring, and knitwear, while also incorporating draping techniques. Each garment tells a story of resilience, creativity, and the rhythmic pulse of Gombey culture, offering a fusion of Bermuda's cultural heritage and modern fashion.





...Kicada



floor length skirt



Flare Sleeve



wide leg trousers draped pieces

Trousers silhouette



Sculptural wraps around body



WIDE SHOULDER

Coat Transition



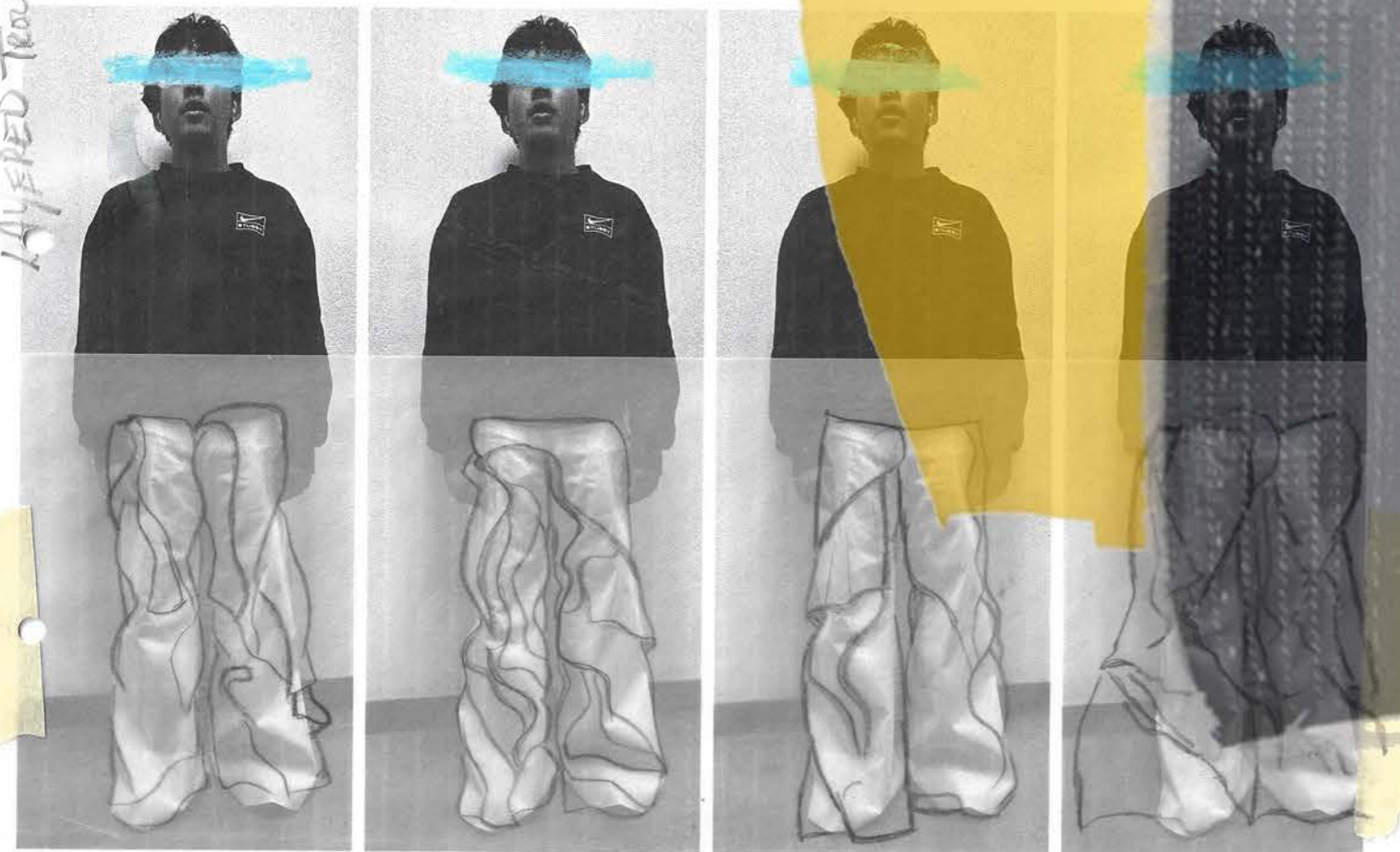
Jump suit/ overalls

# COLLAGE DEVELOPMENT

ELABORATED ANKLE  
TROUSERS

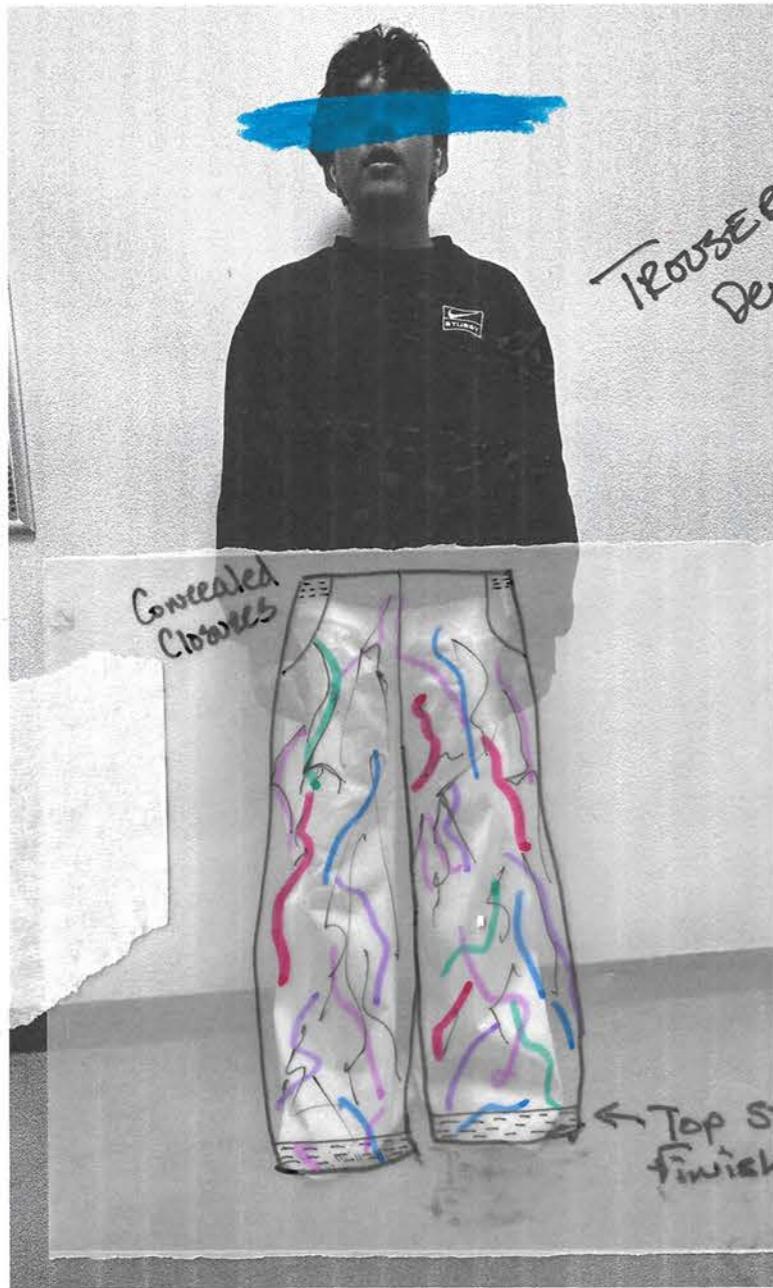


LAYERED TROUSERS



-WIDER LEG w/ rounded  
SHAPE





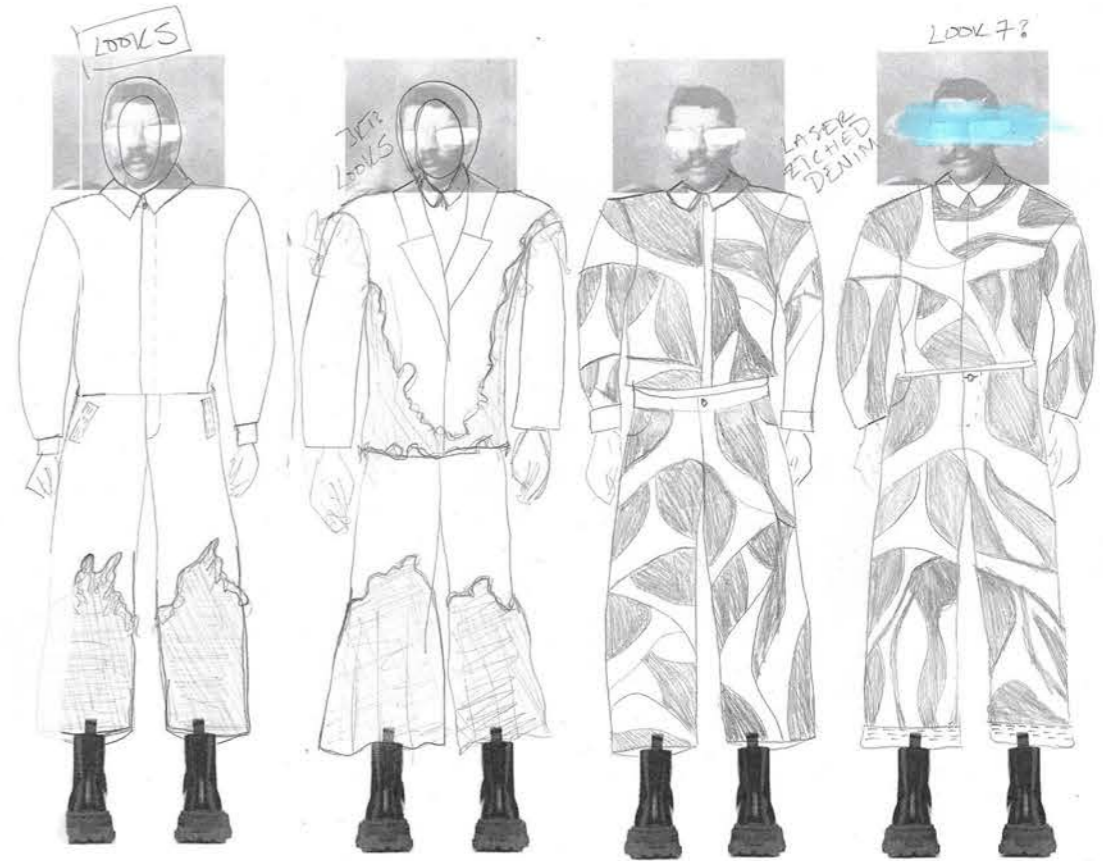
TROUSER Block Development

Concealed Closures

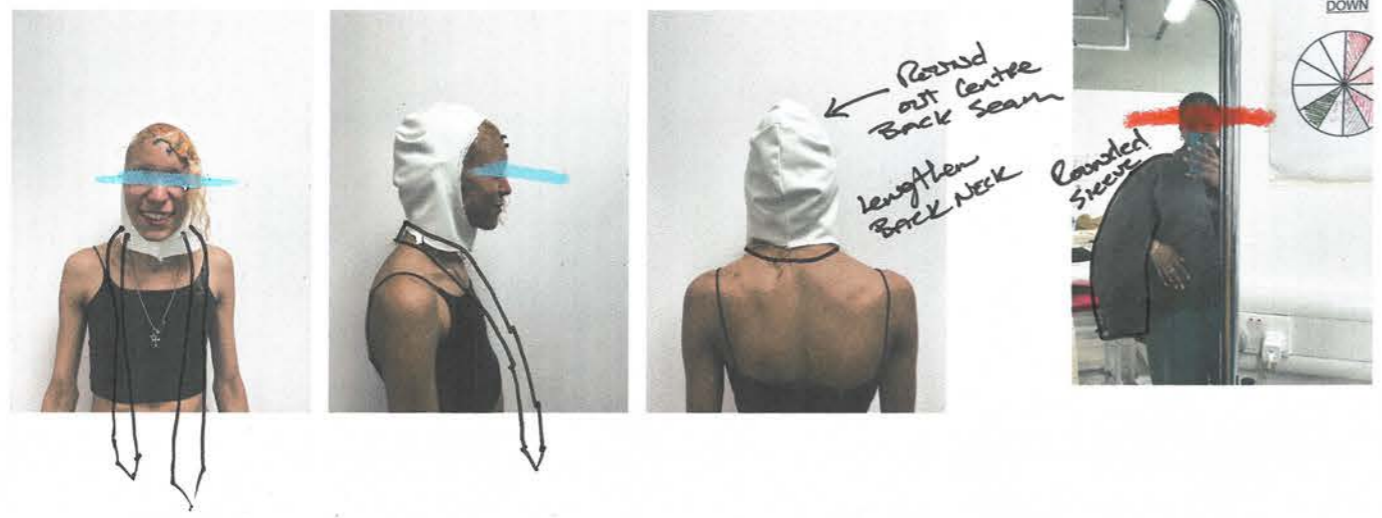
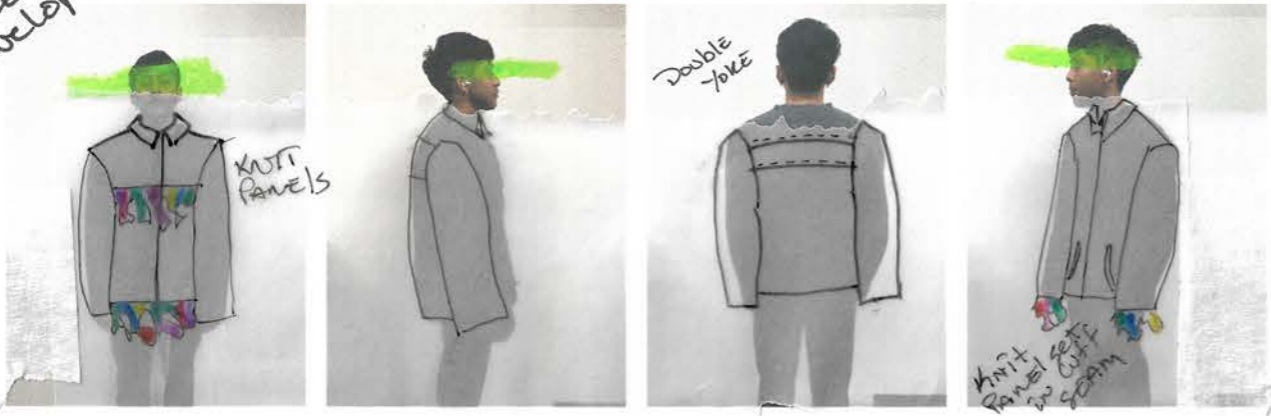
← Top stitching finish



Shifted  
Overalls



JACKET Development



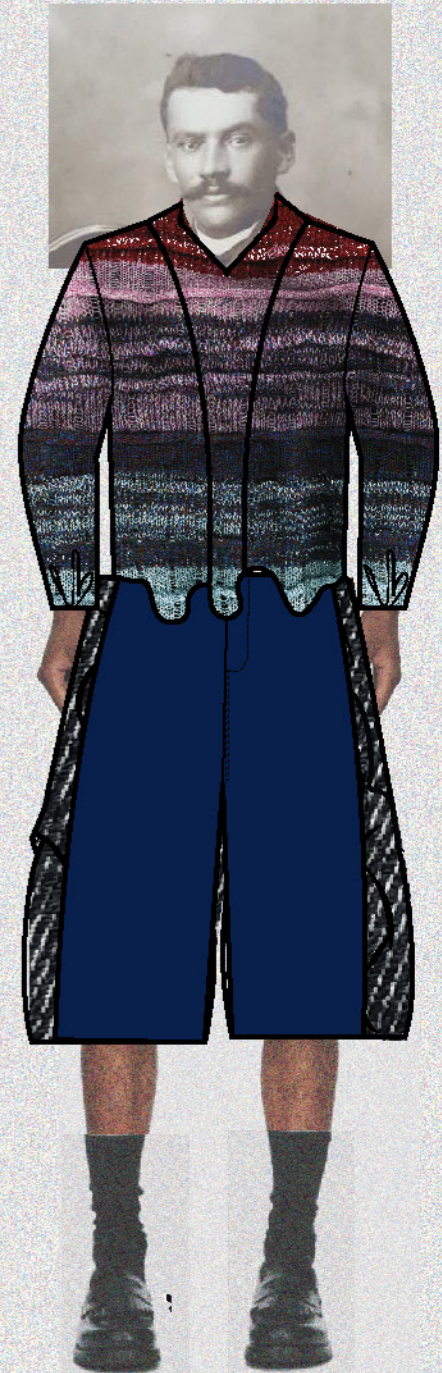
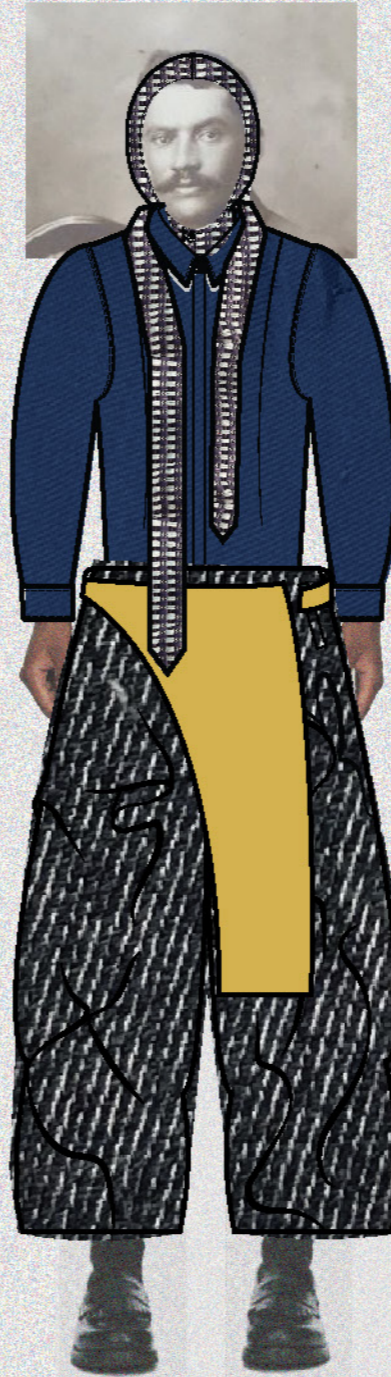
# TOILE DEVELOPMENT

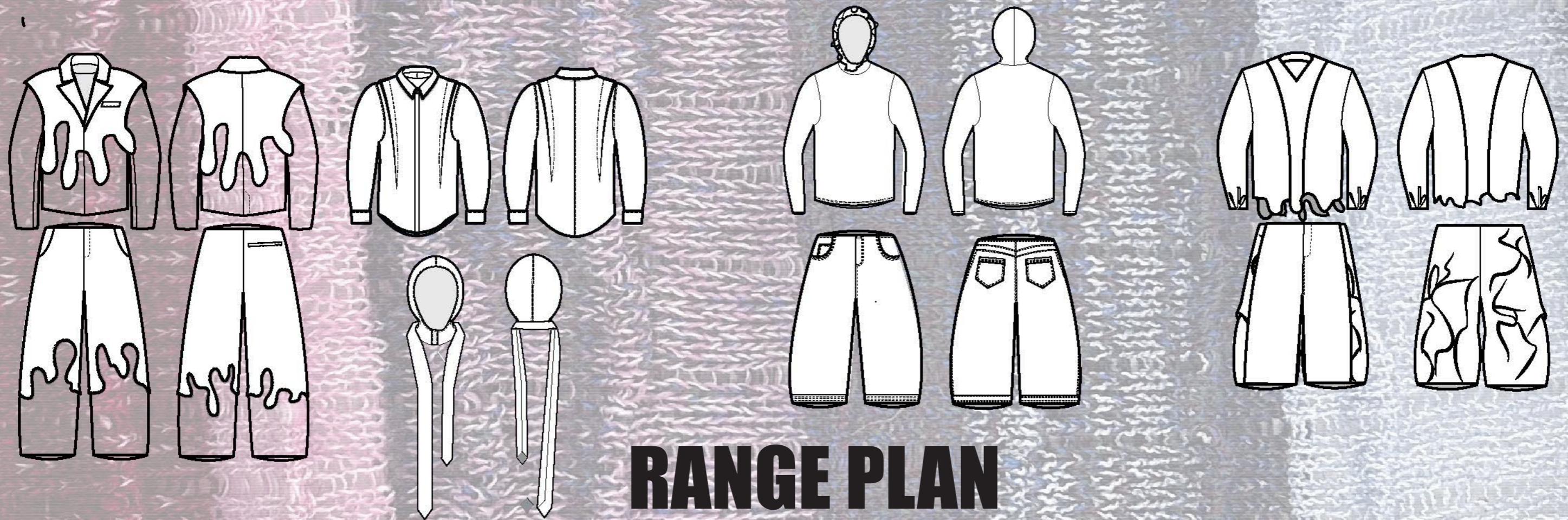
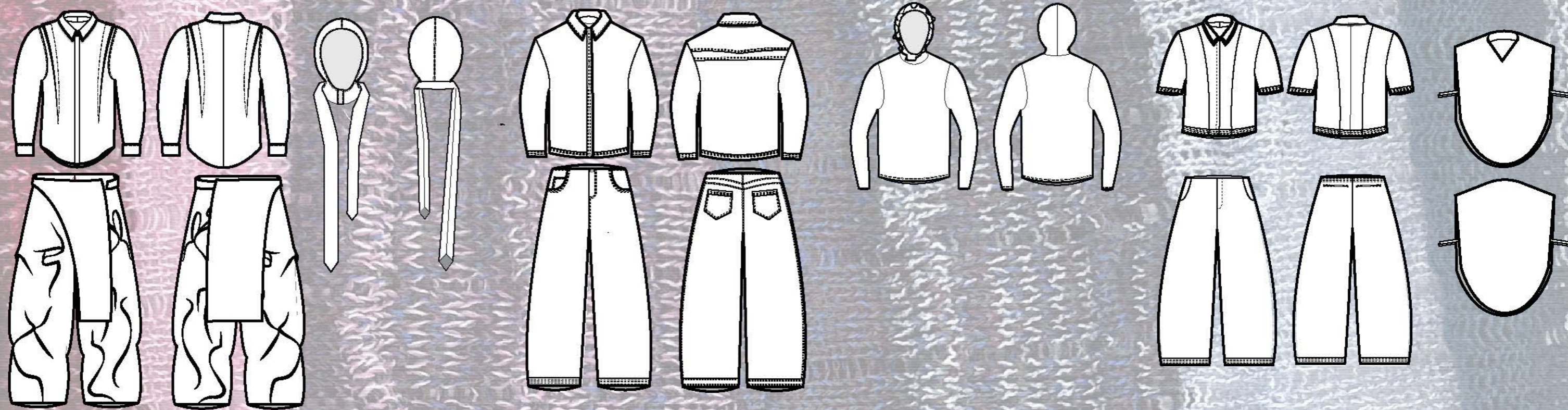
# FABRICS & COLOUR





# LINE UP





# RANGE PLAN

