

TECH DISRUPTION

Tech disruption looks to explore technology and fashion synthesis and how this research could form the future fashion markets. My collection will include the best of both worlds, with aspects of the garments harbouring incredibly detailed and professionally done couture stitch and knit patterns, while also integrating in technological components such as 3D printing, scientific wiring and thermochromic materials to reflect the personality of the current society and the belief that it is inevitable that modern fashion will closely follow the progression path of technological advancement. This concept will not only focus on the texture of garments and textiles, but it will also challenge the idea of a traditional garment. With the unorthodox curves and bulging of sleeves on top of the glistening 16 panel dress that looks as if you've been coiled in metallic wire. The aesthetic of this collection will be that akin to experiencing a vision of the future. With the combination of these two juxtaposing forms of media, I intend to reinvent the face of knitted textile to display the versatility of knitwear and show that this is the true form of knit fabrics and Silhouettes and to express the future possibilities of where this research could lead.

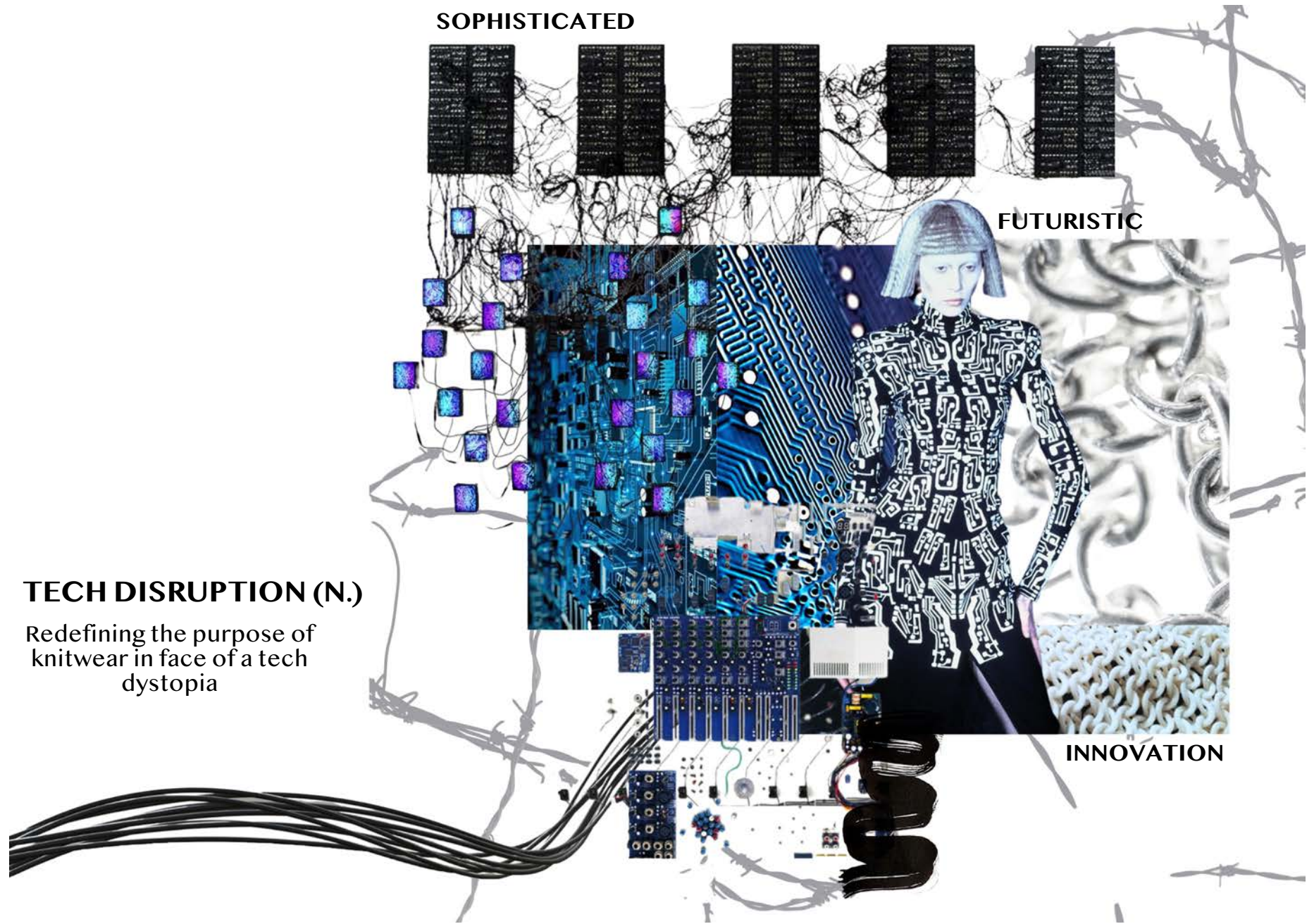
SOPHISTICATED

FUTURISTIC

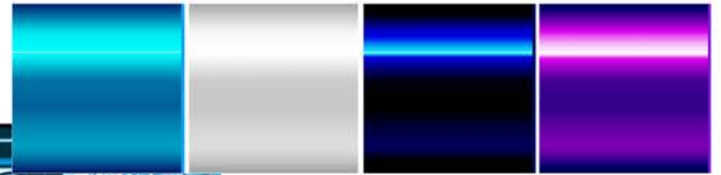
TECH DISRUPTION (N.)

Redefining the purpose of knitwear in face of a tech dystopia

INNOVATION



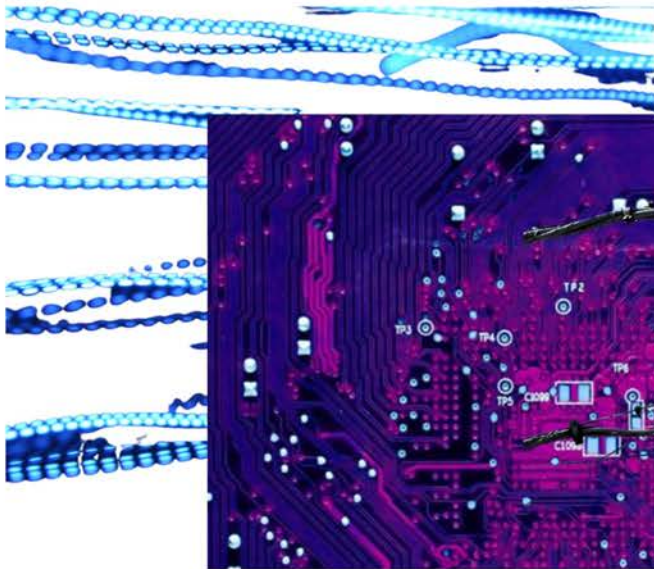
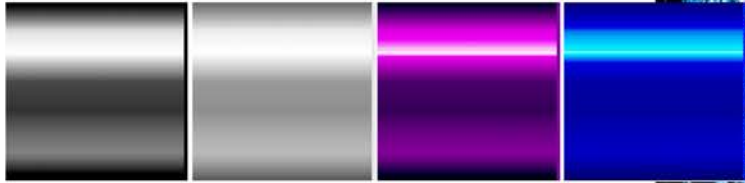
GLOSSY



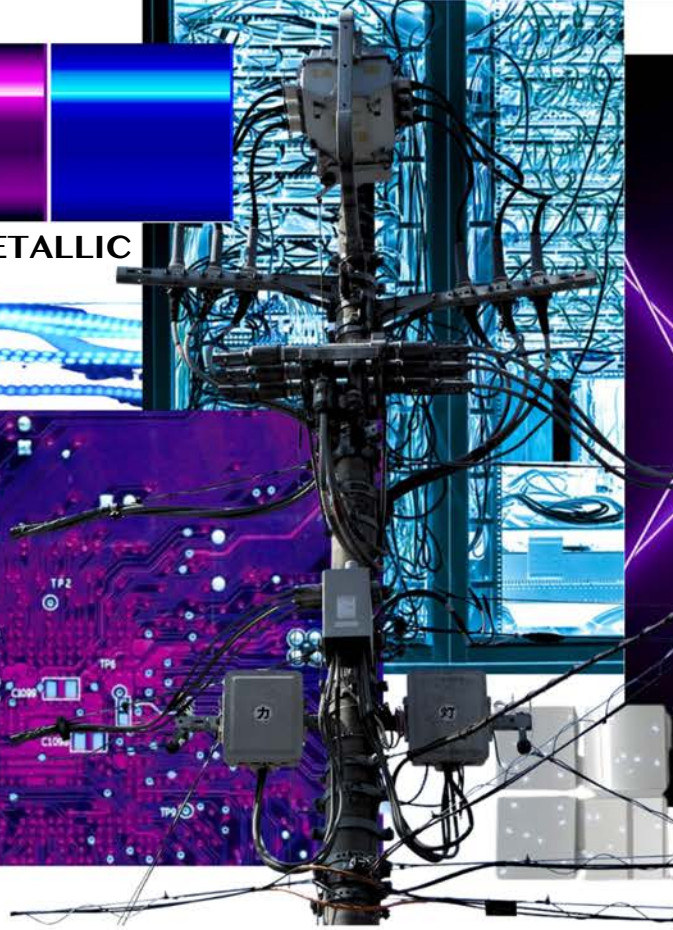
SYNTHESIS



METALLIC



DISRUPTIVE



LUXURY



FUTURISTIC FORM



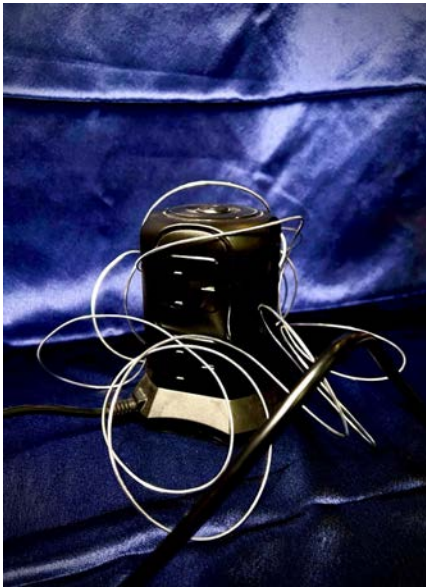
GARETH PUGH



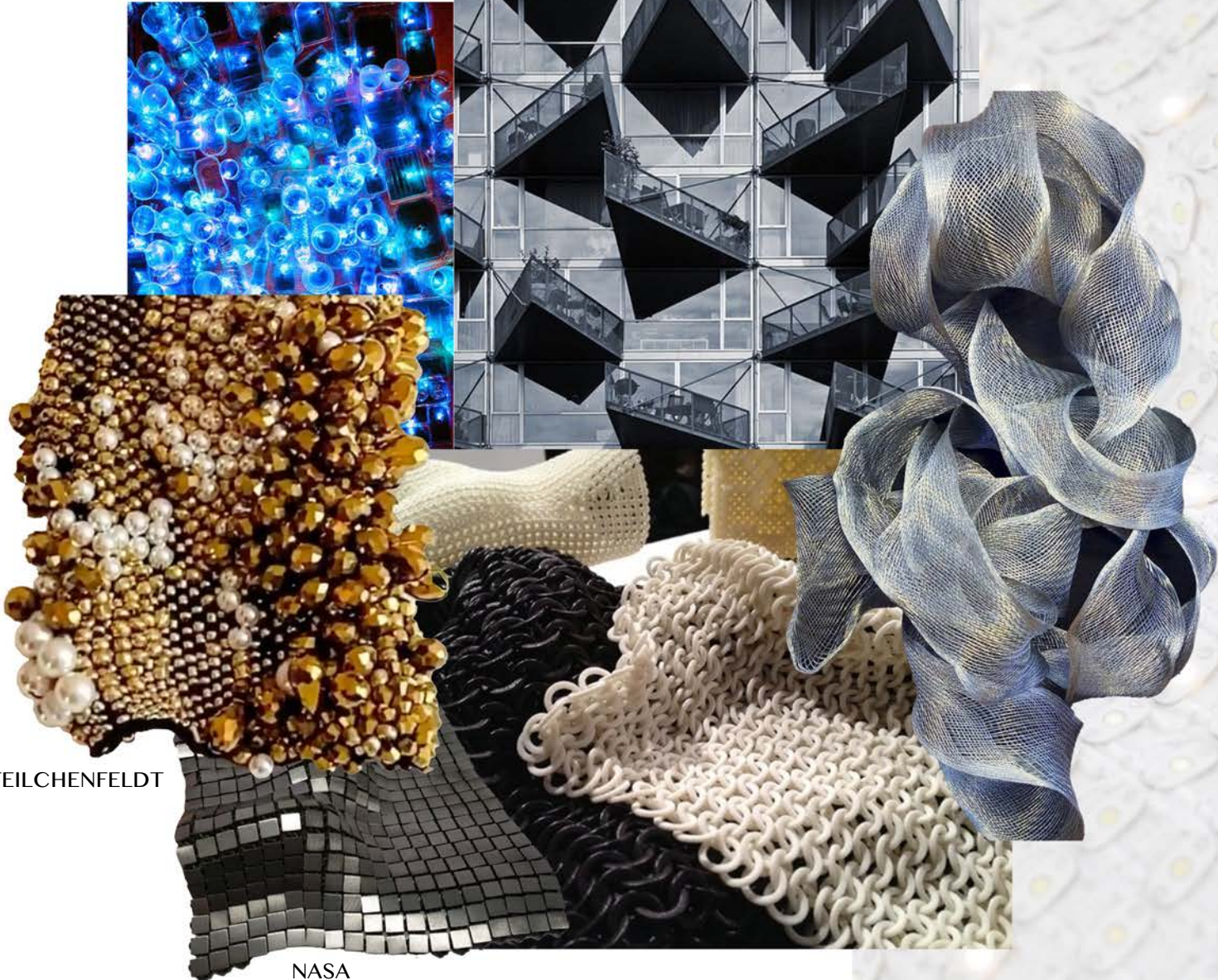
IRIS VAN HARPEN



GIVENCHY FW 1999



STRUCTURED

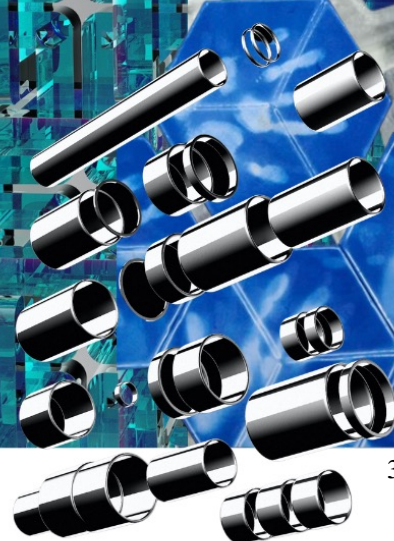


CECILE FEILCHENFELDT

NASA

CONNECTED

LASER CUT

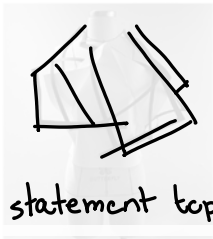
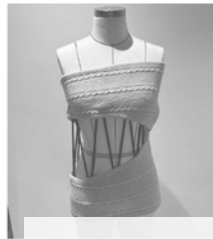
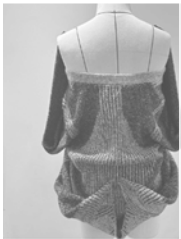


3D PRINTING

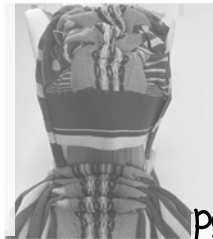
THERMOCHROMIC

COLOUR CHANGING

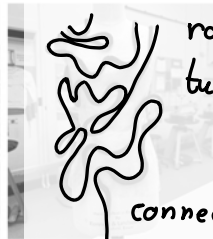
Vest top (open front + half connected)



statement top



pointy / futuristic shape

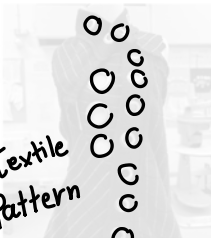
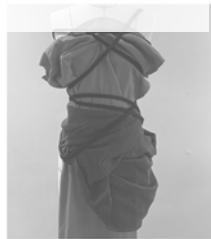
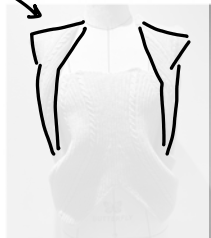


rope?
tube knit

connecting



Draping silhouette



Textile Pattern

bubble

embellishment
3D printing simulation



Draping (rolling)

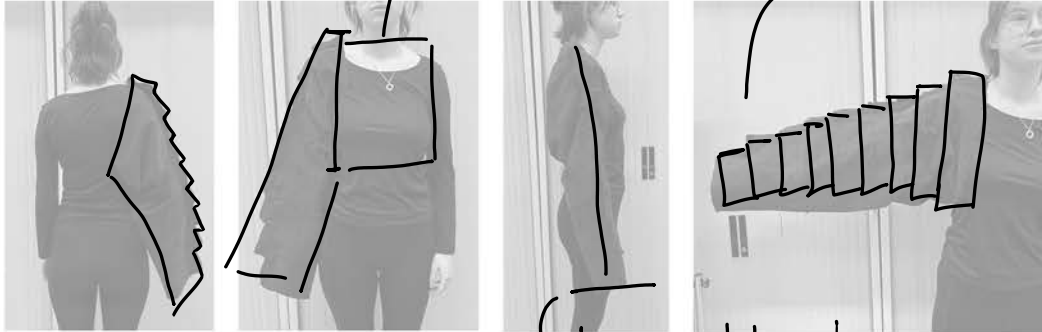
create silhouette repeat



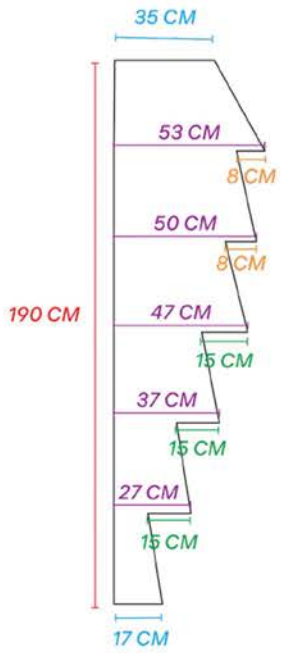
First attempt (no pleat)

Think about body part (how it connects with sleeve)

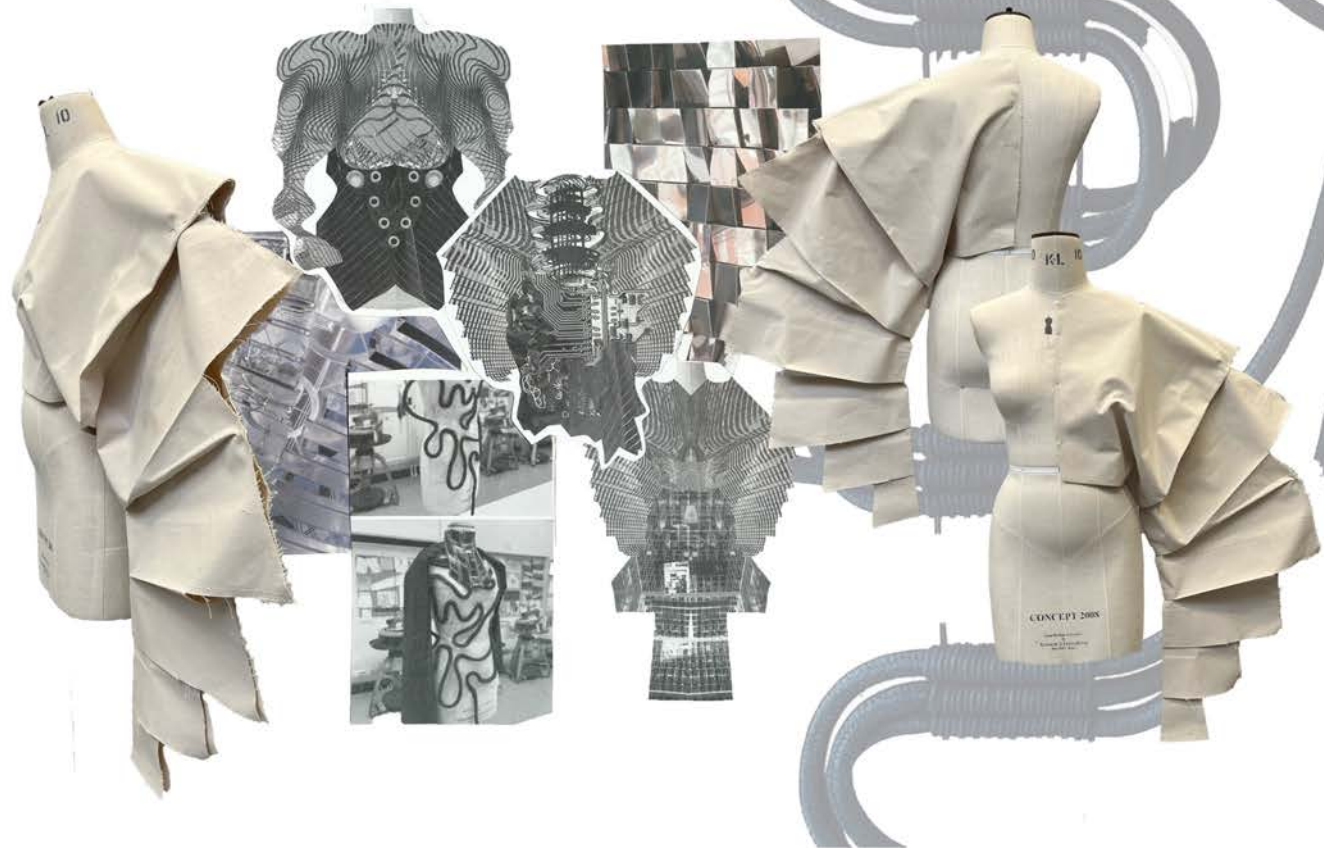
Cut out rectangles with different sizes



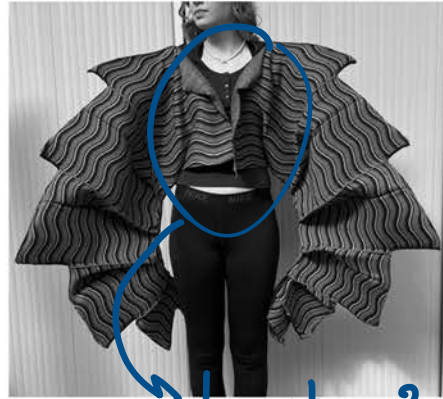
Longer - statement



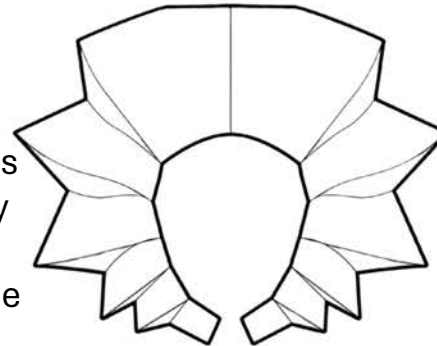
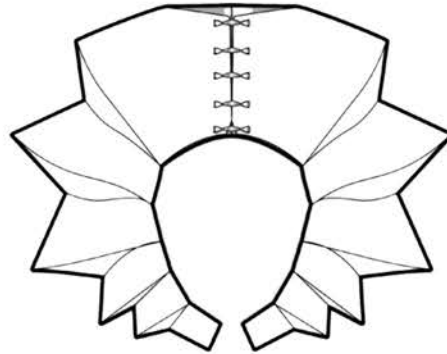
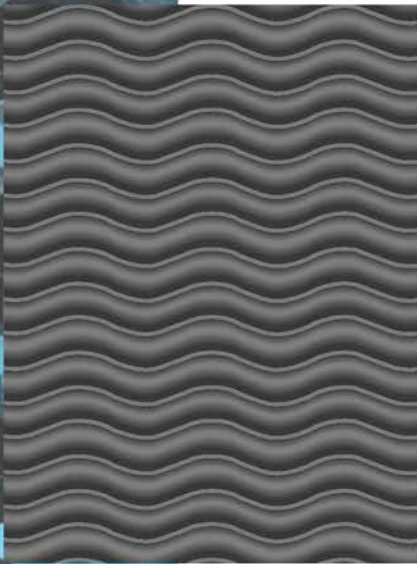
FINAL PATTERN



FABRIC DEVELOPMENT



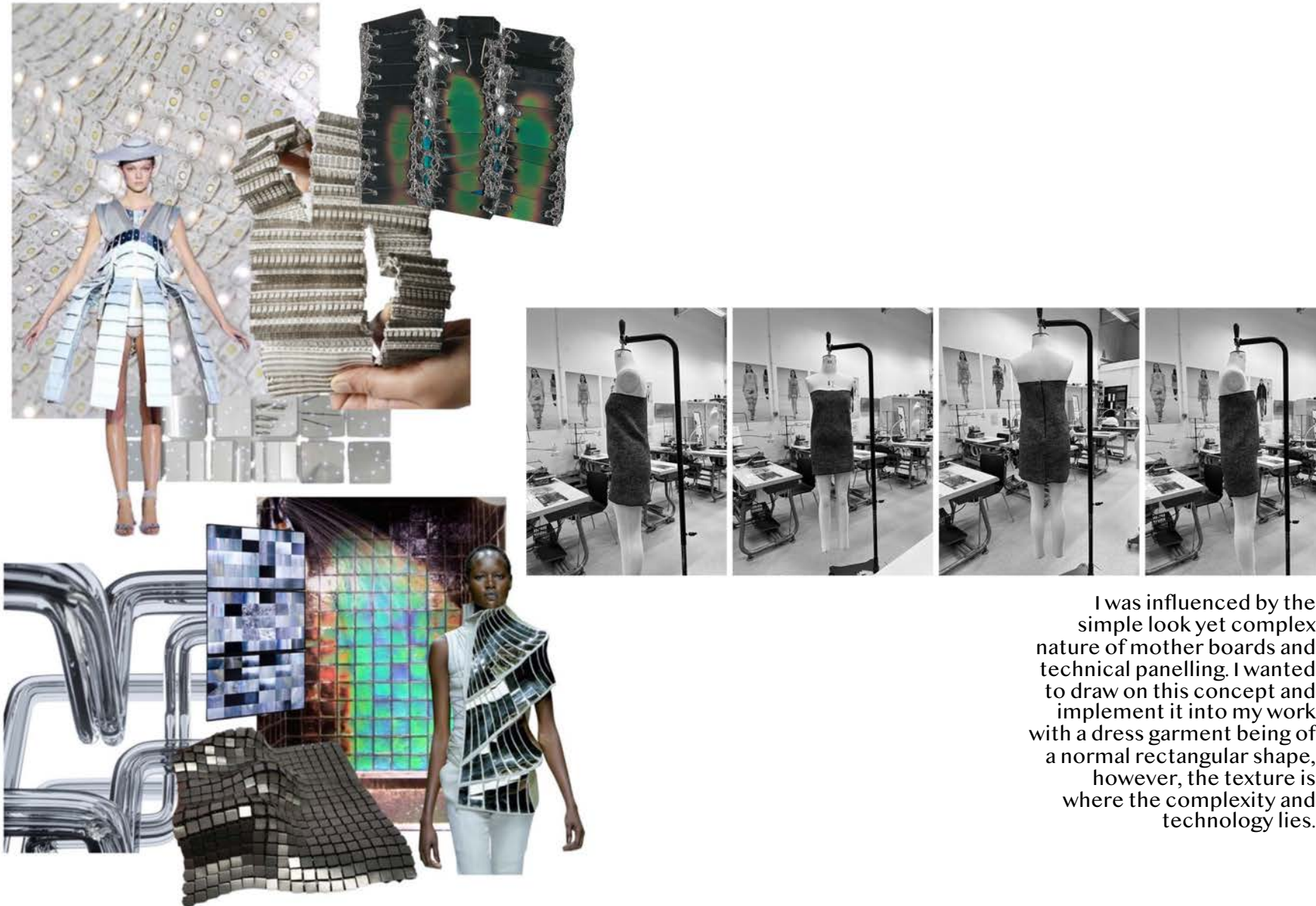
→ bra strap? , clasps, hooks



Wavy fabric inspired by spoils of black wire.

Decided to go with this latch because it's very stiff and strong and won't buckle under the weight of the sleeves

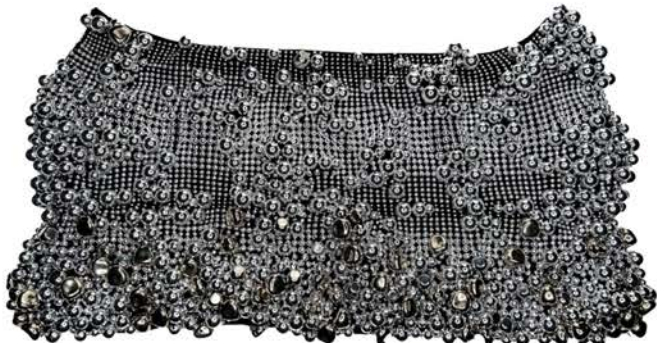
RECTANGLE PANEL INSTALLATION



I was influenced by the simple look yet complex nature of mother boards and technical panelling. I wanted to draw on this concept and implement it into my work with a dress garment being of a normal rectangular shape, however, the texture is where the complexity and technology lies.



Draped designs looking to explore the unconventional garment structures



Loud textile to simulate 3D printing and the variety of designs it offers

