

# 'THE SCULPTOR'S HANDS'

A/W 24



587241  
OVERCOAT 15B  
Size 3  
ORDER No. 609  
JAMES SMITH & Co. (DERBY) LTD.

My Grandmother, Stephanie Shaw, at her sewing machine, 2024.



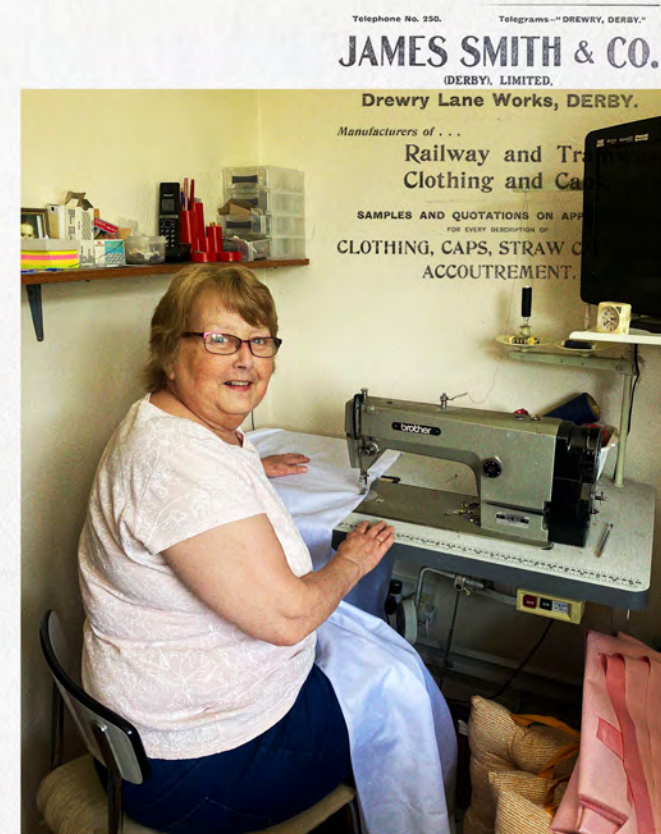




The Workroom at James Smith factory, Drewry lane, Derby, 1949.



Drewry Lane, Derby. In the early 1970s before demolition



*This Final Major Project, titled 'The Sculptor's Hands' Pays tribute to the tradition of hand tailoring in Britain. Inspired by my Midlands roots and family ties to garment manufacturing, particularly my grandmother's experience as a highly skilled seamstress at a garment factory in Derby, specializing in the tailoring of overcoats and blazers. This project explores the artistry and precision of tailoring, celebrating the labour-intensive processes.*



# AUTUMN WINTER 24'

The collection's colour palette draws inspiration from traditional menswear hues, emphasizing superior fabric quality.

Navy wool  
Cashmere.

Fine gauge  
Brown knit.

Deadstock Navy  
wool pinstripe.

Bull Denim.

Cotton lawn  
Shirting.

Black wool  
Cashmere.

Beige waterproof  
cotton.

Garnet Red  
leather.

Navy duffle coat from James Smith & Co.

Woman sewing at a machine.

Group of people in a factory setting.



LOOK 1 DEVELOPMENT

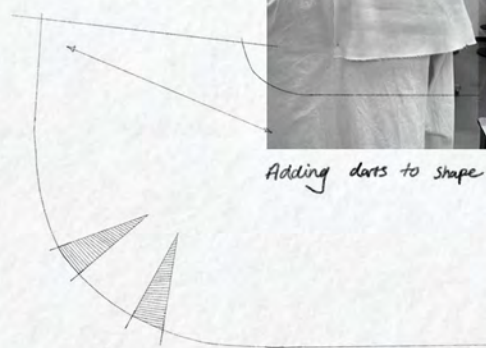
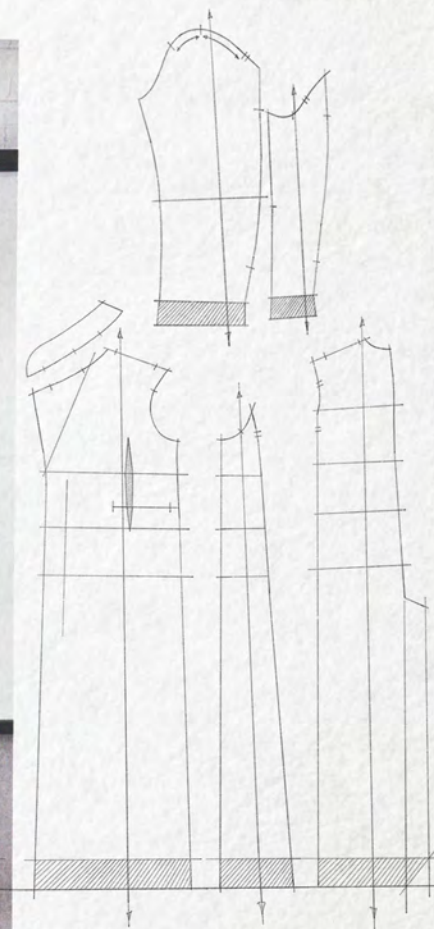
*I began with a tailored blazer shape, then widened the panels to give the coat a more casual look. I also made it longer to create a base for developing my silhouette.*



*Amending armhole & Rebalancing Sleeve.*

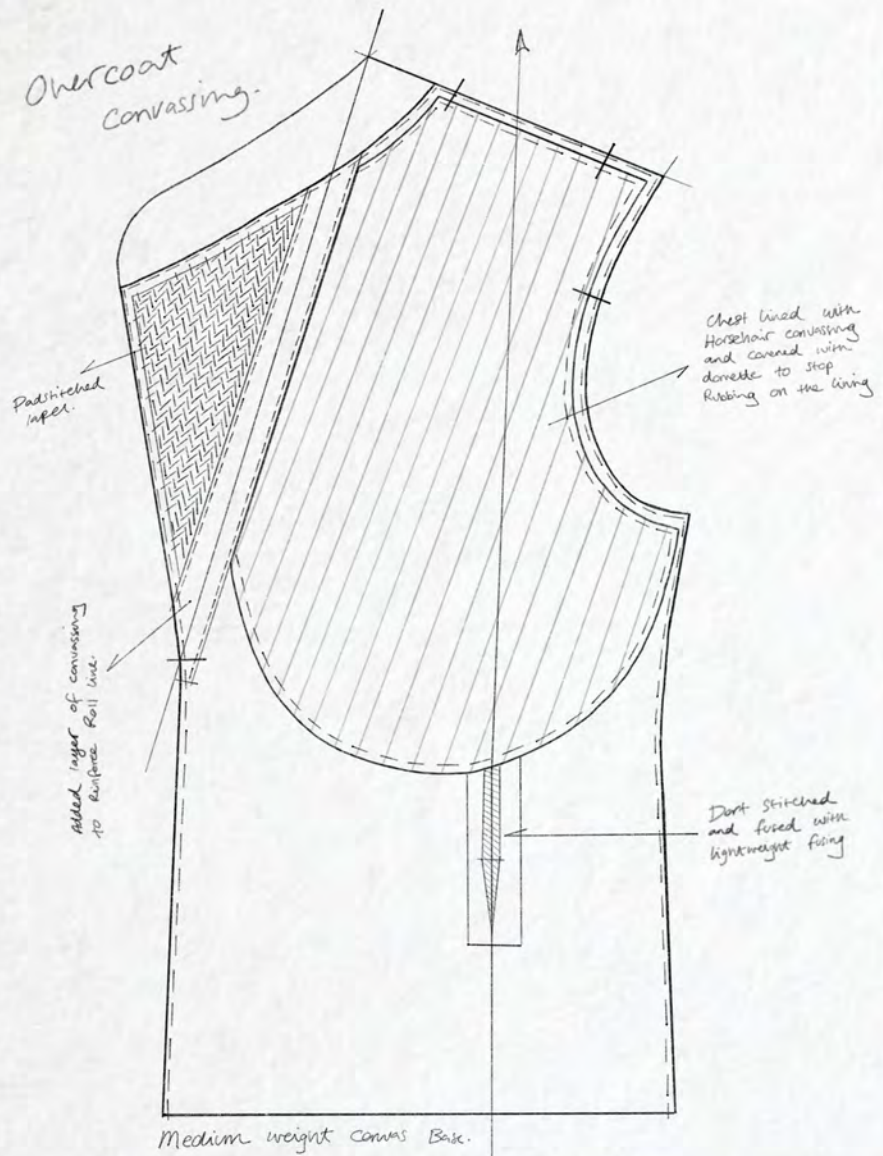


*Developing Inside Canvasing & Padstitching.*



*Adding darts to shape the Scarf.*





Heavy horsehair convasing

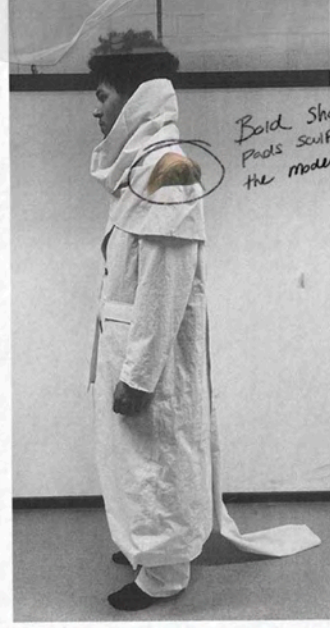
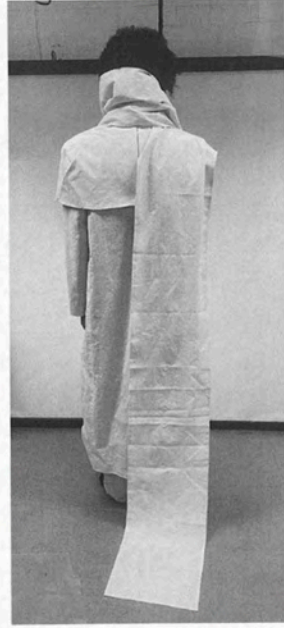
medium weight convasing

lightweight Domette





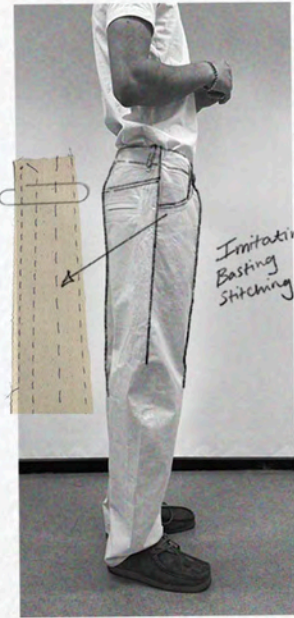
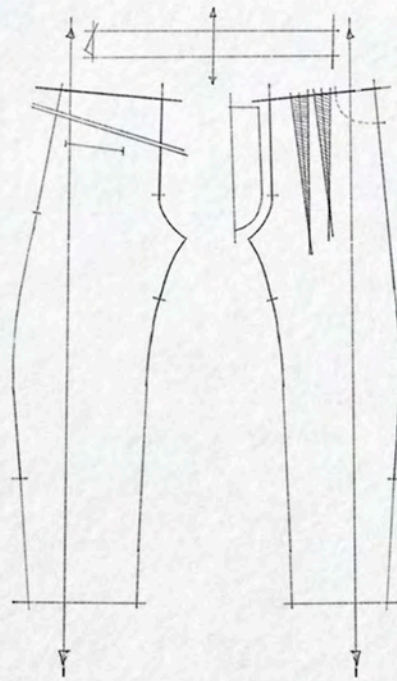
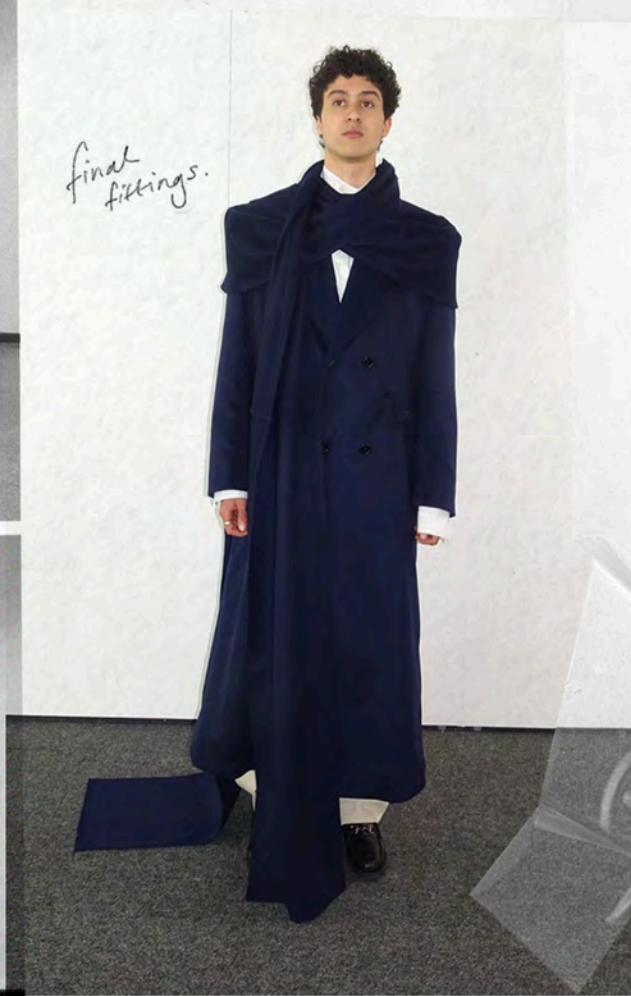
Toiling multiple layers of canvassing



Bold Shoulder Pads sculpted to the model



final fittings.

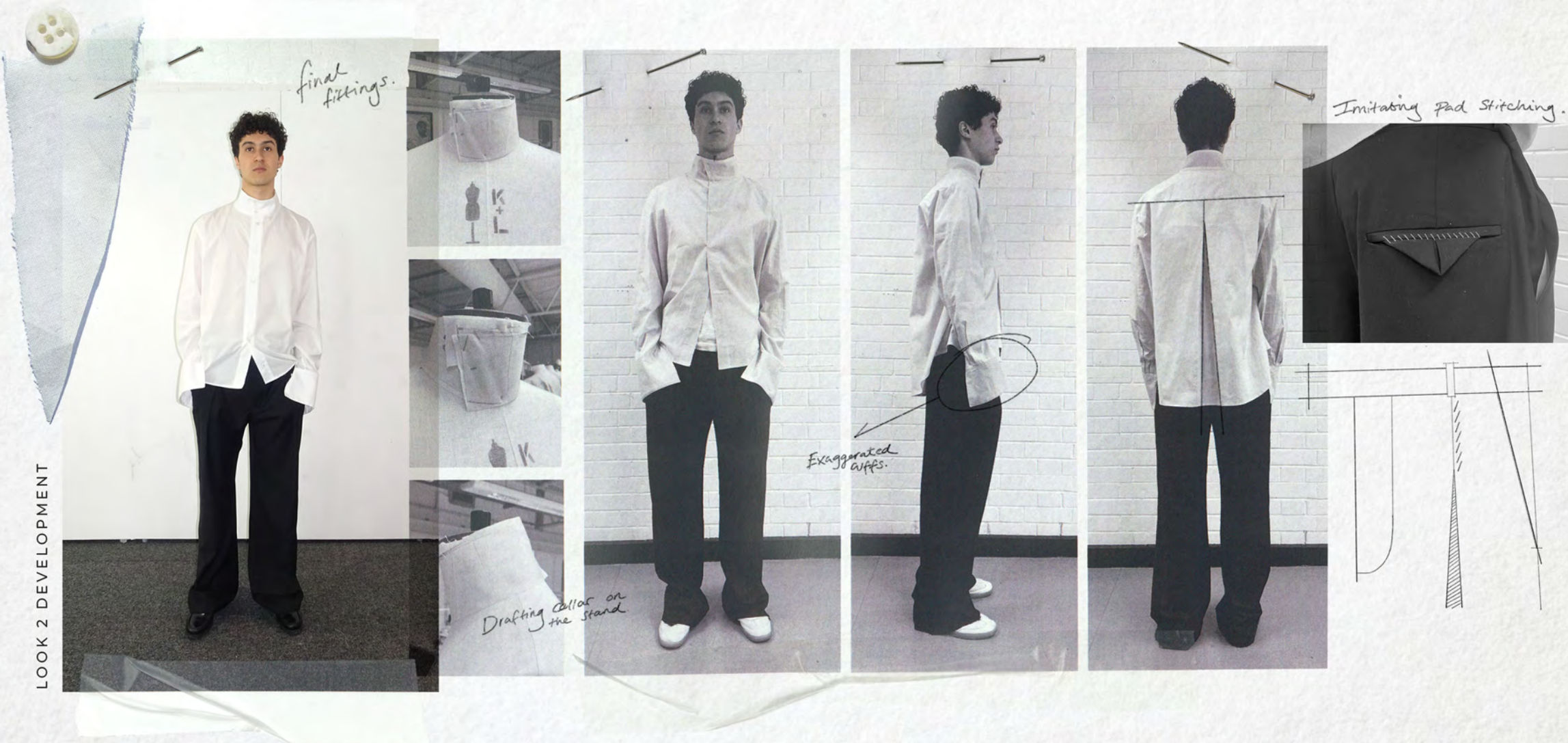


Imitating Basting stitching.



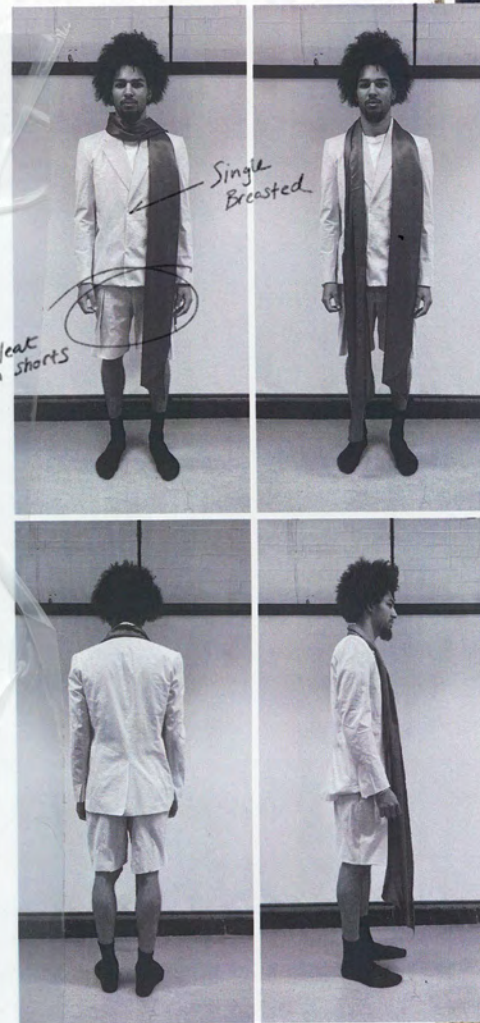
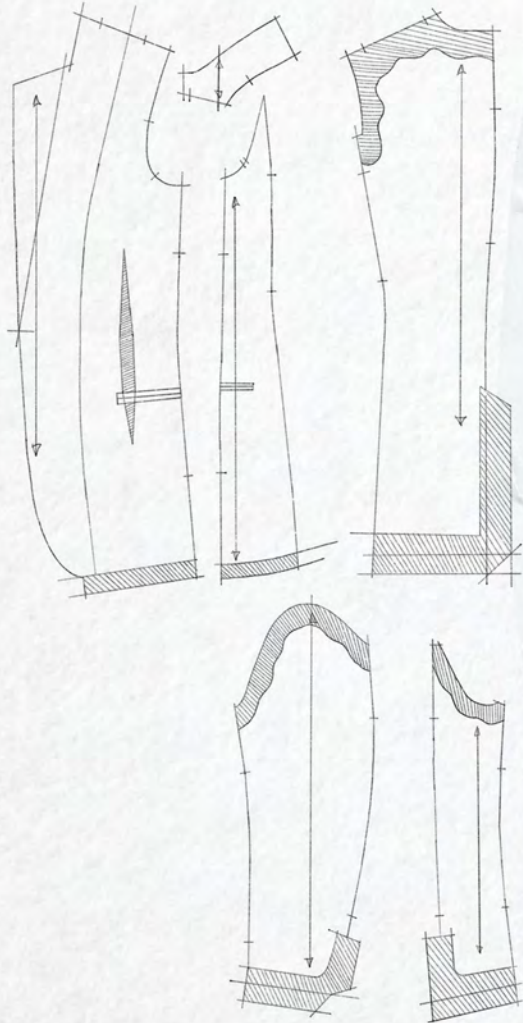


LOOK 2 DEVELOPMENT





LOOK 3 DEVELOPMENT





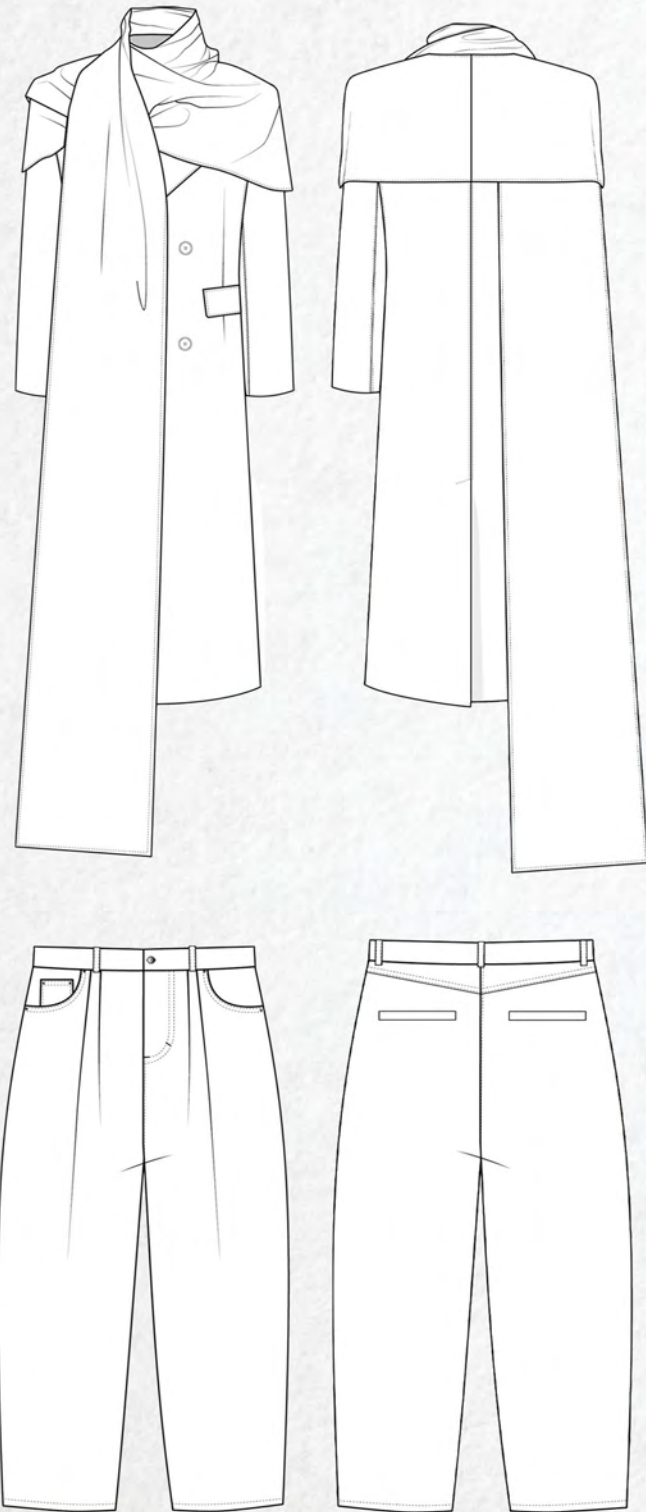
ABIGAIL G. WALL  
BA COLLECTION





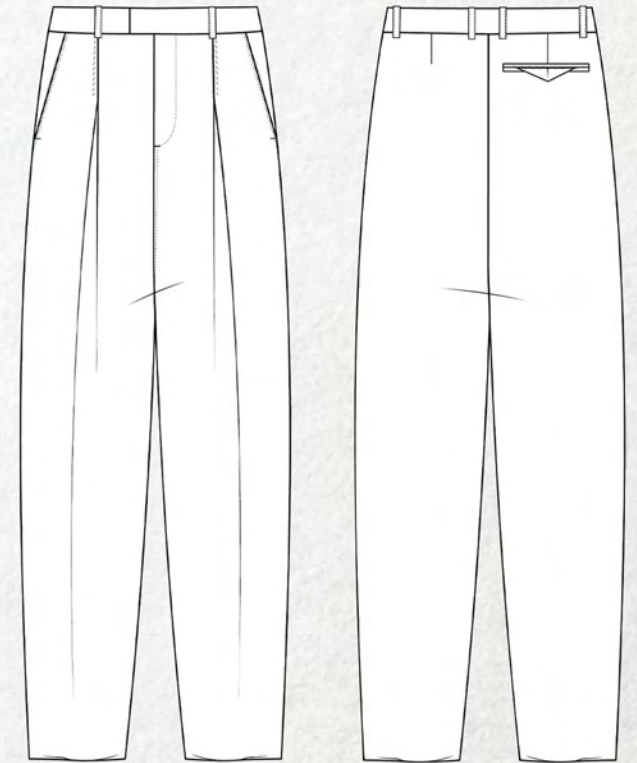
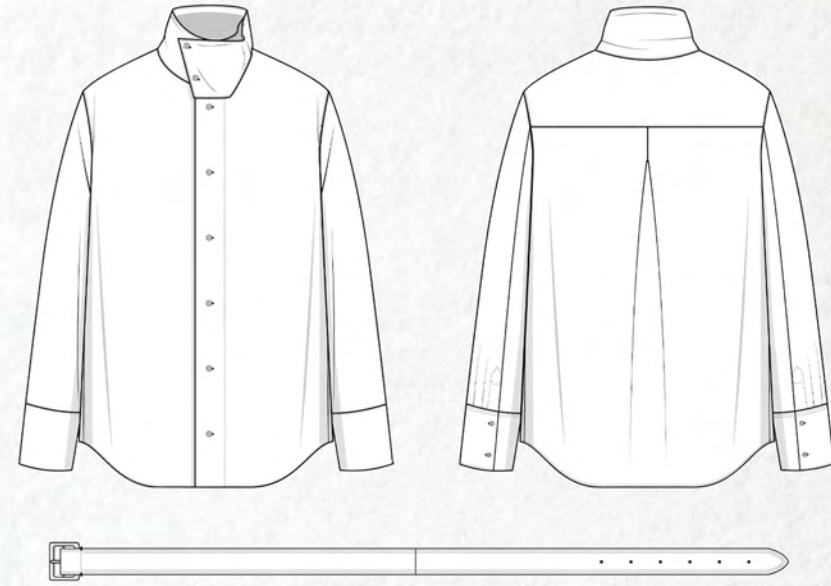
LOOK 1

NAVY BLUE CASHMERE TAILORED OVERCOAT  
ECRU BARREL LEG SADDLE STITCHED JEANS  
HIGH NECK SHIRT



LOOK 2

HIGH NECK SHIRT  
PLEATED TAILORED TROUSERS  
GARNET RED LEATHER BELT





LOOK 3

PINSTRIPED BLAZER AND PLEATED SHORTS WITH STITCH DETAILING  
NAVY CASHMERE SCARF  
HIGH NECK SHIRT



LOOK 4

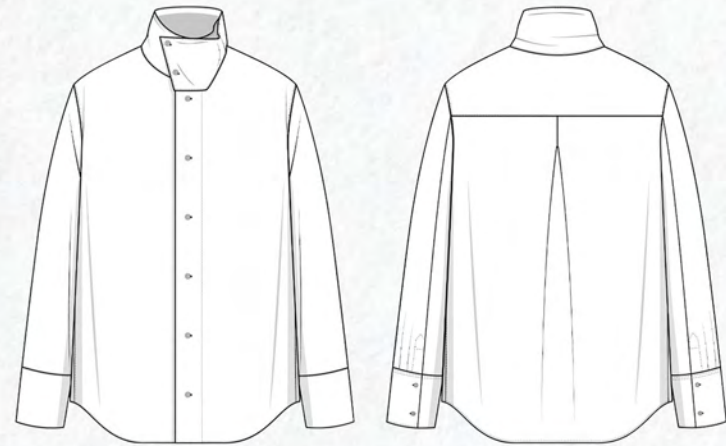
BEIGE KNITTED SCARF JUMPER  
ECRU BARREL LEG SADDLE STITCHED JEANS





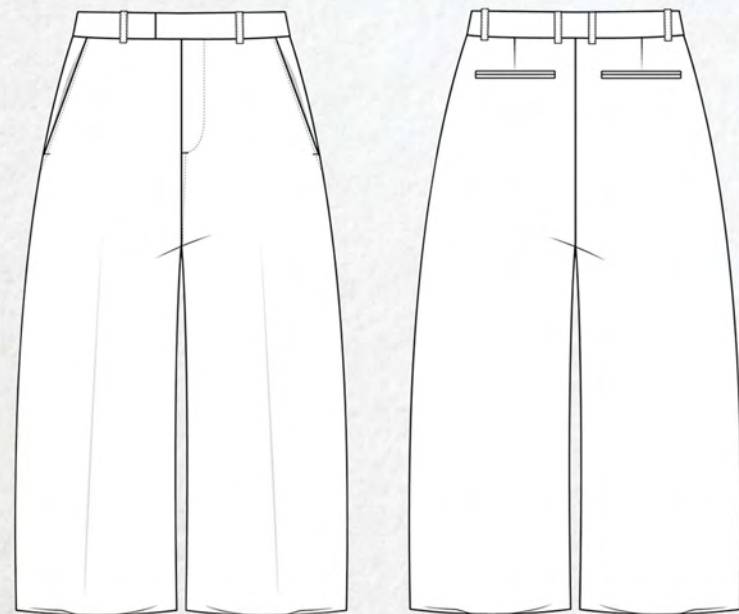
LOOK 5

BLACK WOOL JACKET WITH STITCH DETAILING  
WIDE LEG WOOL CASHMERE TROUSERS  
HIGH NECK SHIRT



100% COTTON LAWN

WOOL CASHMERE BLEND



LOOK 6

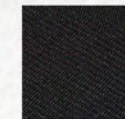
BEIGE DRAPED NECK TRENCHCOAT  
PINSTRIPE WIDE LEG PLEATED TROUSERS



100% COTTON



100% COTTON LAWN



WOOL CASHMERE BLEND





CREATIVE DIRECTION / ABIGAIL WALL  
PHOTOGRAPHER / JOE TUTT  
MODELS / LEO TURNES, MAX EDWARDS WARRENER

LEO WEARS THE TAILORED SCARF  
OVERCOAT WITH THE ECRU BARREL LEG  
JEANS AND HIGH NECK SHIRT.



LEO WEARS THE TAILORED SCARF OVERCOAT WITH THE PINSTRIPE PLEATED SHORTS AND THE HIGH NECK SHIRT.







*MAX WEARS THE HIGH NECK SHIRT WITH THE PINSTRIPE PLEATED SHORTS.*



*MAX WEARS THE PINSTRIPE BLAZER WITH THE PLEATED WIDE LEG TROUSERS AND HIGH NECK SHIRT.*



LEO WEARS THE PINSTRIPE BLAZER WITH  
THE PLEATED WIDE LEG TROUSERS, HIGH  
NECK SHIRT AND NAVY CASHMERE SCARF.



MAX WEARS THE PINSTRIPE BLAZER WITH THE HIGH NECK SHIRT.

