

Lucky Strike, 1932



Lucky Strike, 2023



Berkeley Rodmell, 2021



Ed Templeton, 1999



Arts and Culture, C. 1990







mottled orange!

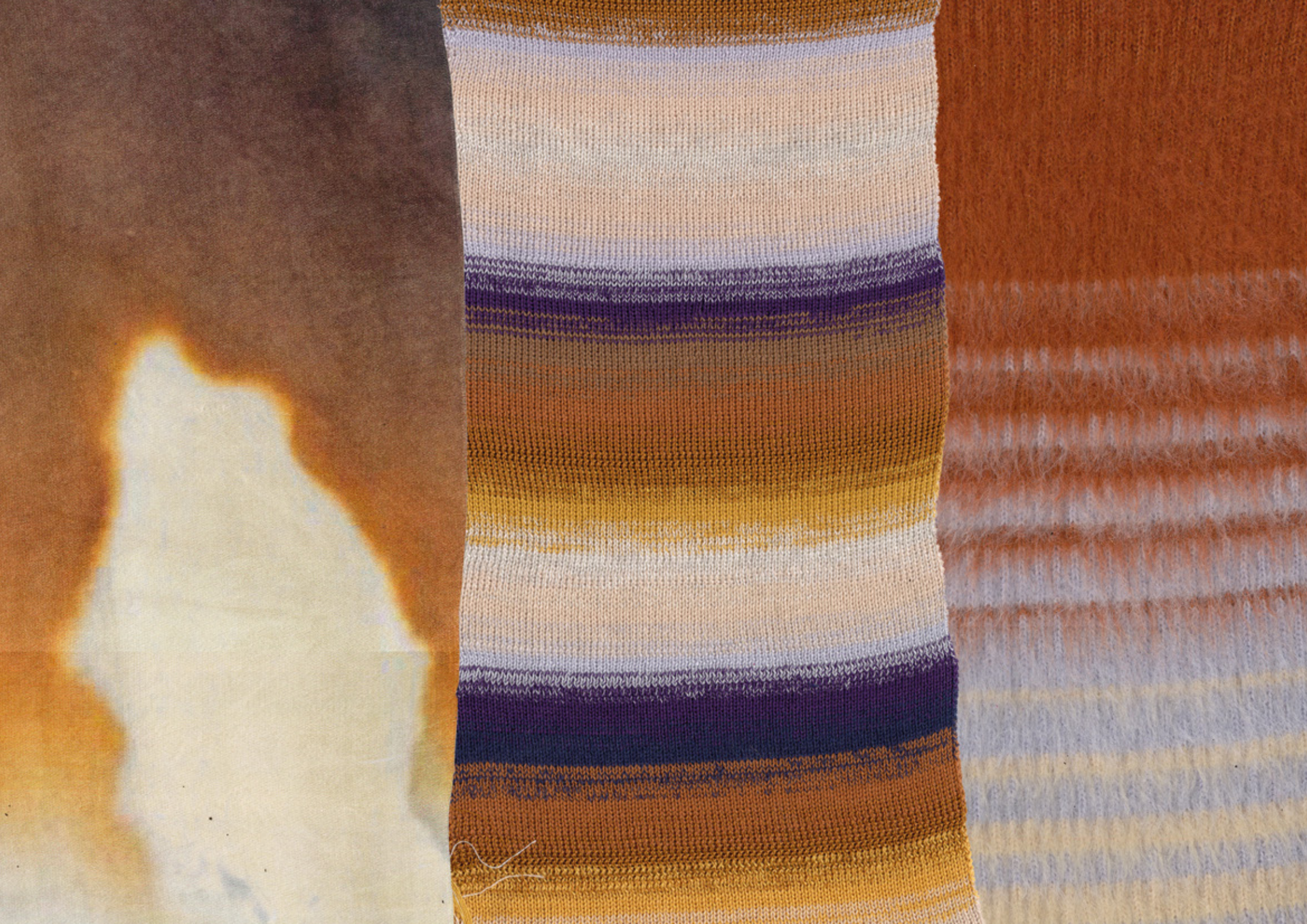
bleached effect

moments of white

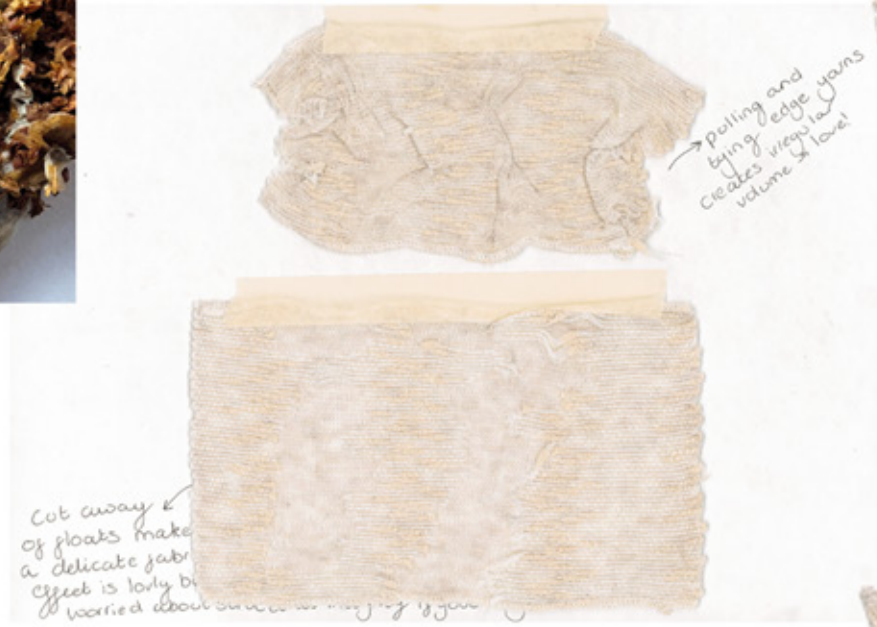
bright yet dark blue

deep contrast in colour

imperfect edges.

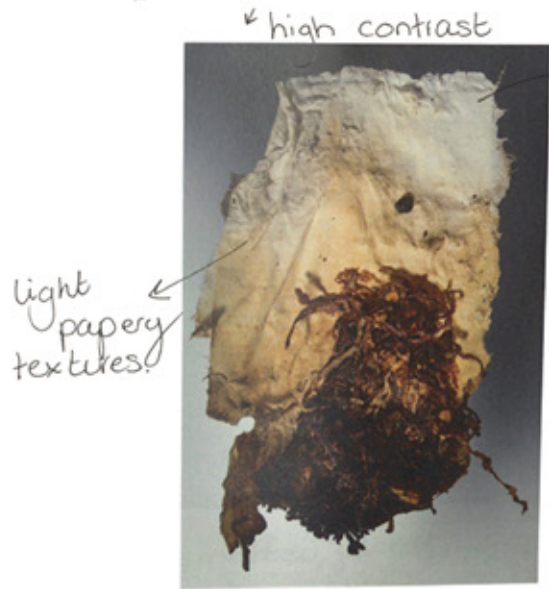






14GG Stoll
Inlay

Viscose and Recycled Polyester & Cotton
Hand manipulated



Richard Littlewood, 2015
Nicotine photo series





#carry forward









Vionnet's old 1930s Hollywood designs give inspiration for traditional routes glamour

Ombre asymmetric sleeve with a folded collar

Base Fabric - 5GG

Body - 2:1 rib. Fully fashioned

2 ends Merino, 1 end Mohair & Acrylic

Sleeve - 2:1 rib

2 ends Merino/Cotton, 1 end Mohair/ Mohair & Acrylic

Trim - 5GG

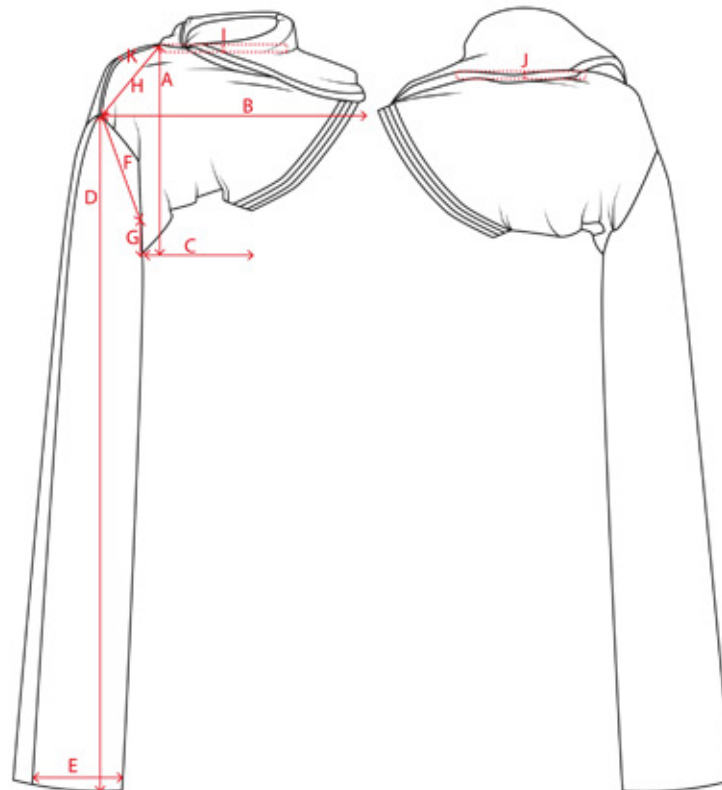
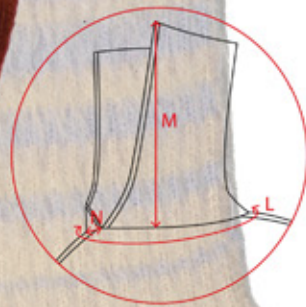
2:1 rib

2 ends Merino, 1 end Mohair & Acrylic

Construction

Seams - 8 Point linker

Trim - Point to point with 8 Point linker



Measurement point (flat)

(CM)

A - Body panel length	26
B - Body panel (Widest point)	54.5
C - Body panel (Narrowest point)	33
D - Sleeve Length	99
E - Sleeve width	21.5
F - Armhole	23
G - Underarm seam	6
H - Shoulder Width	11
I - Front neck drop	3
J - Back neck drop	1.5
K - Exposed seam width	0.5
L - Neck hole (Total)	59
M - Neck Trim Height	22
N - Length trim off-set from SS	2

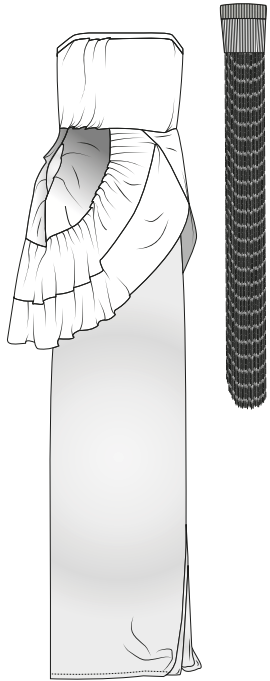
Yarn Information

Yarn 1	Yarn 2	Novetex Textiles	Unknown - dead stock
1 Ply, 100%	1 Ply	2/50NM	1 Ply
30% Mohair 96% Acrylic	100% Merino	50% Recycled polyester	100% Mohair
30% Nylon 4% Wool		30% Tencel 20% BCI Cotton	

Collection Range Plan

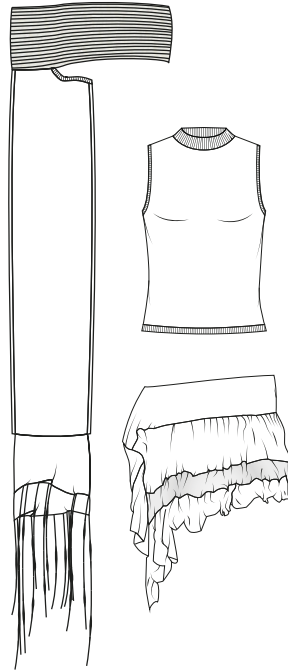
Outfit 1

- Bandeau Silk dress with side split. 12gg Devore knit top with single bed folded trim. 12gg grillion peplum and 7gg ombre stripe
- 5gg brushed 2:1 rib scrunchie with exposed seams and tassels



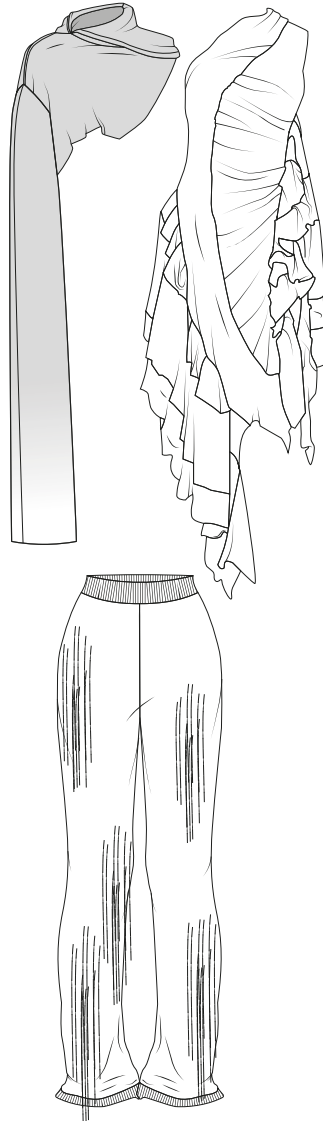
Outfit 2

- E-wrap domestic knit vest with 12gg 2:1 rib hem and necktrim
- 12gg dubied and silk pleated skirt
- Asymetric sleeve, double layer and exposed seams sleeve with domestic e-wrap and 5gg 2:1 rib and brushed 2:1 rib body



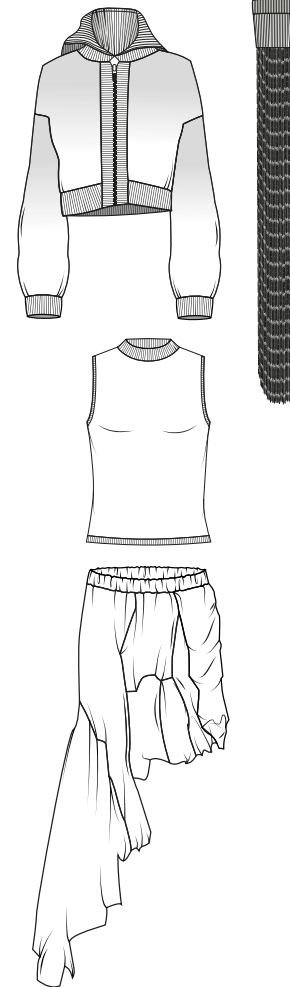
Outfit 3

- Pleated dress with 12gg sheima, 12gg dubied and domestic knit panels
- Asymetic sleeve with oversized folded 5gg 2:1 rib collar and fully fashioned body. 5gg Ombre brushed stripe extended sleeve in 2:1rib
- Domestic e-wrap and ladder knit, with tassels and brushed 7gg mock rib cuffs and 12gg 2:1 rib waistband



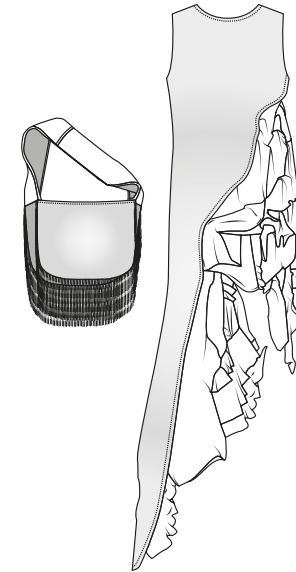
Outfit 4

- Tucking stitch domestic knit vest with 12gg 2:1 rib hem and necktrim
- Asymetic skirt with pleated domestic and 12gg dubied knit panles
- Domestic e-wrap in chunky hand dyed yarn with fading ombre background stripe. 5gg brushed 2:1 rib cuffs, hem and oversized collar.
- 5gg brushed 2:1 rib scrunchie with exposed seams and hand dip dyed tassels



Outfit 5

- Silk asymetric dress with domestic and 12gg dubied pleated attached skirt.
- Silk and 7gg hand dyed cotton bag with tassels and exposed seam handle



Outfit 6

- Asymetric 12gg stoll knit top with elastic inlay and single bed frills
- 12gg dubied and domestic e-wrap with tassels and tucking stich pleated skirt
- Cigarette shape brushed 5gg skirt, with elastic wasit band, ombre stipe hem and exposed seams side split.

