



Skin

Bart Hess

Carmen Bado,

Sinead O'Dwyer

SKIN

My final major project titled 'SKIN', explores four main elements of the human skin. For this project I was both inspired by skin as an organ and the different elements within skin that allowed it to be so malleable and contributed to its development, including products we use on skin. And I was also inspired by beauty ideals & trends, including the rise of skincare through promotion and consumption within the last few years.

Key Words
Elasticity, Transparency, Coating,
Moisture, Hues, Layering

The categories within Skin I will be exploring are **Skin As A Structure**, **Skin As Skincare Products**, **Skin As Sensory** and lastly **Skin As Melanin**. I will be investigating each section through various types of creative development and then combining the different elements together within my design development and final collection of three outfits.

Skin As A
Structure

Rae Akinbo
Skin
Fashion Design Knitwear

Elasticity, Lines & Folds
VISUAL RESEARCH



Bart Hess, 2015

*Skin As A
Structure*



VISUAL RESEARCH

Texture & Moisture



Barnd Luxde

Skin As
Sensory & Skincare Products

Lois Van Herpen

Initial Development, coating & molding knit with bio-plastic on male cast



*Coating knitted fabric
in bio-plastic*



Bio-plastic



**COATING & MOLDING
WITH BIO- PLASTIC**

Sinead O'Dwyer



*Natural Dyeing
Development*



*Initial Shape & Colour
Development*



**COLOUR & DESIGN
DEVELOPMENT**

*Skin As
Melanin*

COLOUR & DESIGN DEVELOPMENT

*Initial Colour Categorisation
Development*

*Natural Dyeing
Development*

*Skin As
Melanin*



*Natural Dyeing
Development*

*Initial Yarn & Material
Development*

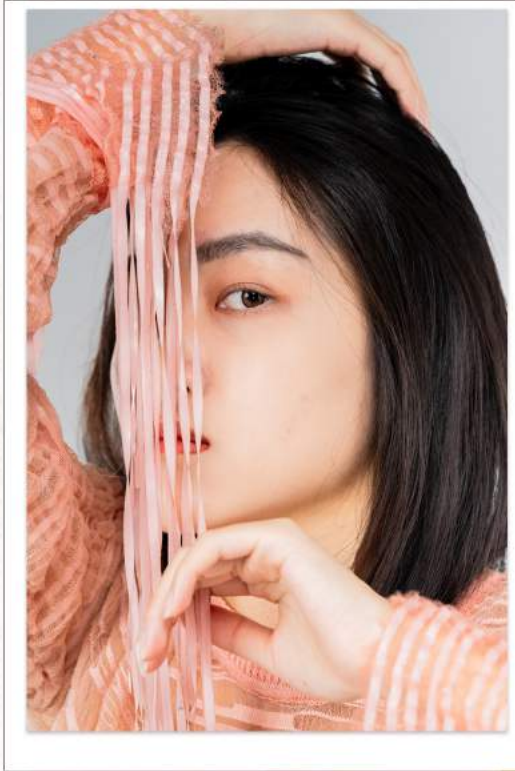


Initial colour development

**COLOUR & DESIGN
DEVELOPMENT**

*Skin As
Melanin*

OUTFIT ONE FABRIC DEVELOPMENT



Initial Toile and Knit Fabric Development



Translating shirring technique into knit using elastic, latex & monofilament



shirring on latex



Initial drapings & fabric ideas



Naturally Dyed Panels



PANTONE
18-1047 T12
Dark Blue

PANTONE
18-1552 3P
Medium-Lime



OUTFIT ONE SKIRT DEVELOPMENT



OUTFIT TWO DEVELOPMENT



*Bio- Plastic Molded
initial sample*



*Bio- Plastic
Molded Corset*

Body Cast



Carmen Bada.



Shreed G'Dwyer



*Creating the bio-
plastic sheets
using body &
mannequin casts*



*Alexander McQueen
SPRING 1996*

**Bio-Plastic Molded
knitted Top
Development**



OUTFIT THREE DEVELOPMENT

*Gathering & pleating
the fabric*

*Naturally Dyed
Skirt Panels*



*Coating the knitted top
with bio-plastic*



Feed in technique, 12 gauge on monofilament and elastic

12-gauge Shima lace

Inlay, 12 gauge with monofilament and latex

Drop stitch on 12 gauge on natural dyed cotton-viscose yarn

Inlay on 10 gauge on monofilament,



FINAL LINE UP



OUTFIT THREE
 -Knitted Bioplastic Coated & Moulded Top
 - Knitted & Mesh Layered Skirt
 - Gloves



OUTFIT ONE
 -Shear Knitted Cropped Top With Monofilament and Elastic
 - Knitted Layered Skirt With a Corset Waist
 - Crochet Bag



OUTFIT TWO
 -Knitted Lace Cropped Top
 - Bioplastic Bodice
 -Wrap Mesh Skirt
 -Wrapped Asymmetric Inlay Knit Skirt
 - Leg Warmers



COLLECTION LOOKBOOK



Skin
Rae Akinbo