

# Project Context:

The act of collecting often time extends beyond tangible items, it transcends into the realm of cherished memories and emotional connections. Collectibles became a vessels of memories rather than mere objects. I studied the collecting behavior and the idea of collecting when doing the dissertation and I found out when collecting, it is sometimes important to be attached to the things you collect as it will allow yourself, the collector, and your collectables to develop deeper connections and the worth of collectables to grow. This will decrease the thoughts of giving up on the items you have already collected, and you will use the collector's mindset to carefully treat your collection. You cherish and treasure the collections and maintain them, turning them into vintage instead of letting them turn into garbage. This context will be great to investigate and further develop. By promoting the act of collecting, curating, and cherishing, we are encouraging people to build a truthful relationship with their clothes and make wiser decisions when it comes to shopping.

## Project Concept Statement:

**Hayley Chan**

BA (Hons) Fashion Knitwear  
Design & Knitted Textile

As a collector myself, I see collecting as a journey of treasure seeking. Collecting is something that I enjoy doing and have been doing for many years. I want to explore the collecting behaviour and mindset as well as to show others my perspective of collecting and the thing I collect. The collector mindset means to care for things, to practise mindful decision making and to maintain/cherish the things you have. It is a beautiful mindset to have and something I want to promote as it can be sustainable in a long run not only applicable to fashion, but also other things in life. Through bringing this concept to attention and presenting my collections through knitwear, it can be a great reminder to everyone to try to think like a collector and cherish the things they own.



Fig.1 "Tyler Mitchell: I Can Make You Feel Good" at the International Center of Photography, New York (2020), photographed by Jenée-Daria Strand.



# Collect Cherish

Moodboard





Colourboard

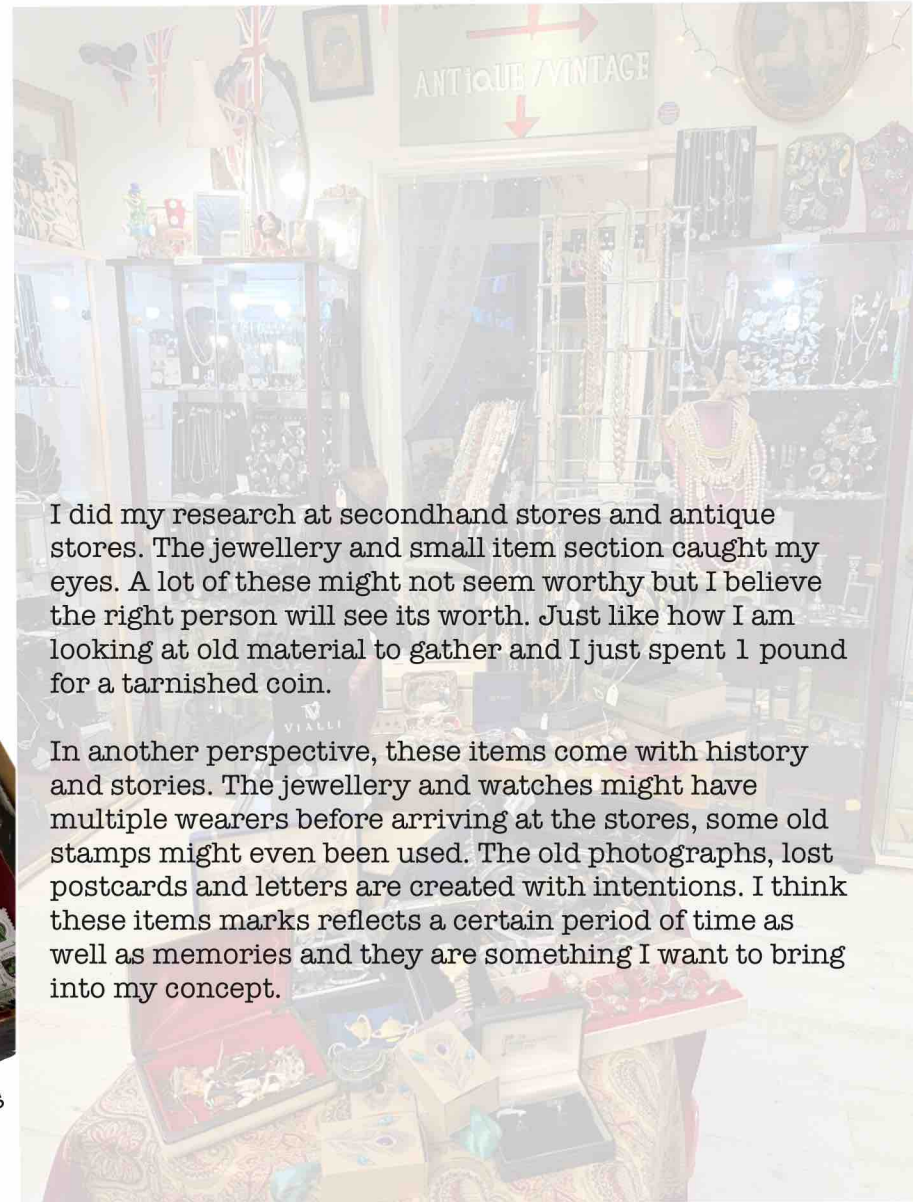




Primary  
Research



images I took at thrift stores

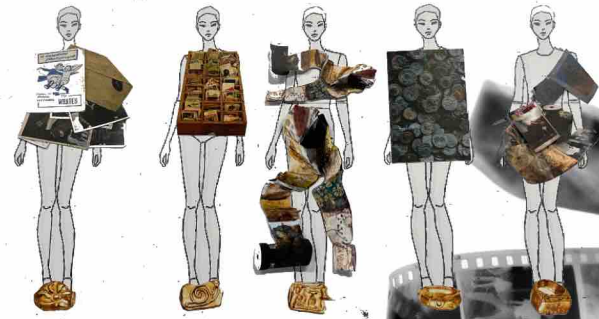
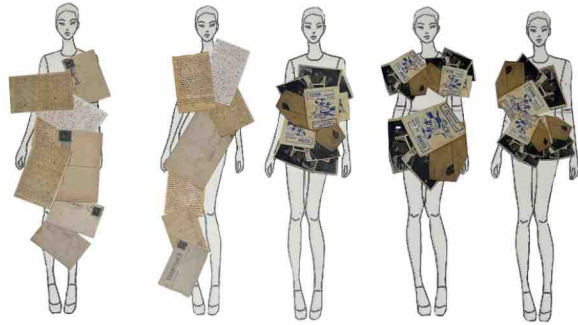


I did my research at secondhand stores and antique stores. The jewellery and small item section caught my eyes. A lot of these might not seem worthy but I believe the right person will see its worth. Just like how I am looking at old material to gather and I just spent 1 pound for a tarnished coin.

In another perspective, these items come with history and stories. The jewellery and watches might have multiple wearers before arriving at the stores, some old stamps might even been used. The old photographs, lost postcards and letters are created with intentions. I think these items marks reflects a certain period of time as well as memories and they are something I want to bring into my concept.

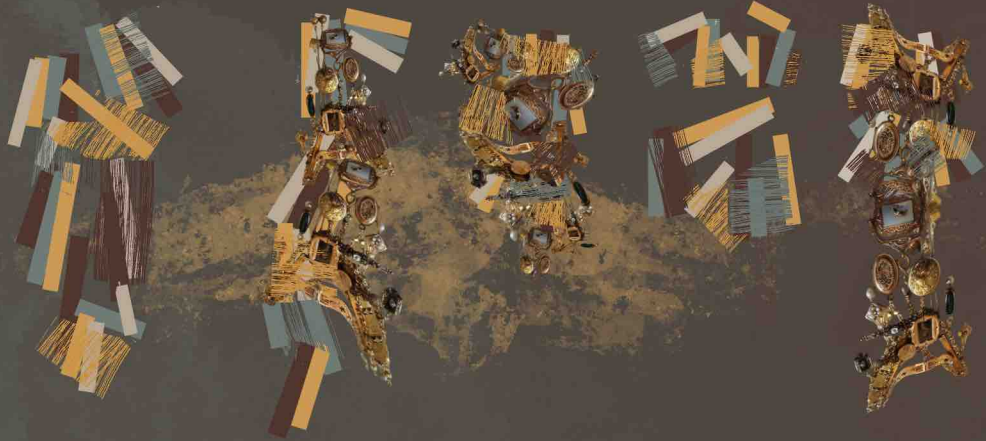


elements: letters, tapes, film rolls



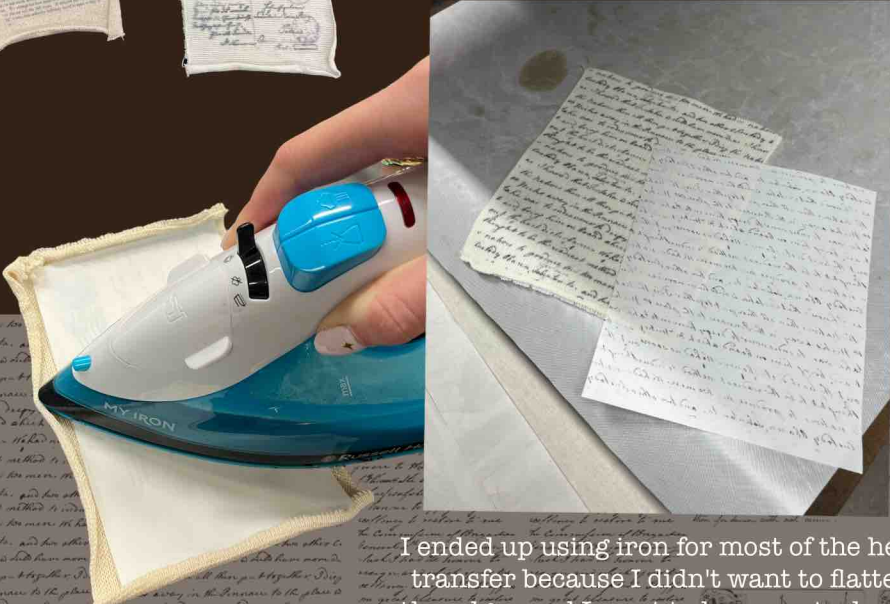
Silhouette  
Development

Letters, cards and postcards are one of the things that people collect. They hold sentimental value, reminding them of special moments of relationships. People also collect them for historical or artistic interest. Collecting them is a way to preserve memories and connect with the past.



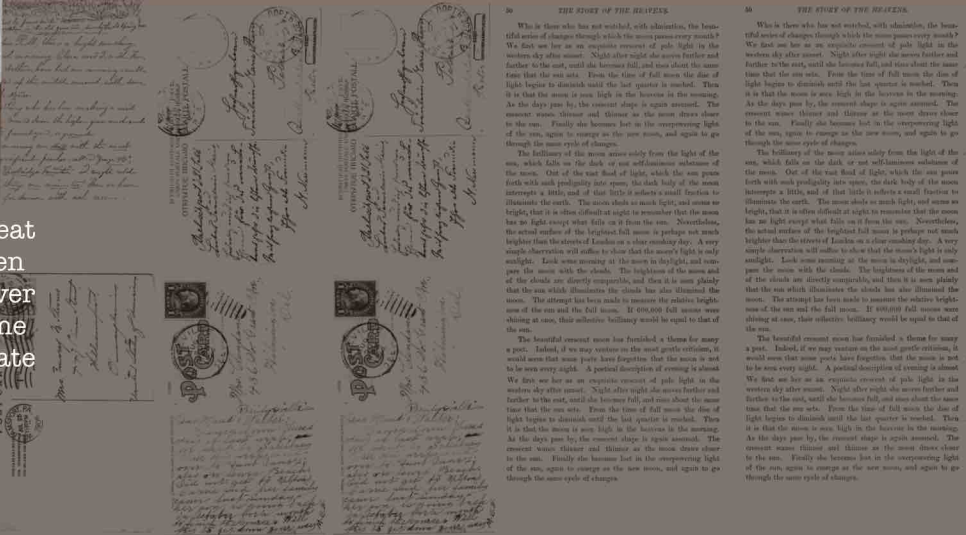


Garment 1  
Final Fabric  
Development



I ended up using iron for most of the heat transfer because I didn't want to flatten the edges and I want to have control over how much the print transfers. For some knits, I did partial heat transfer to create a faded look.

Since it was unsuccessful using needle punching to achieve the written affect. I tried dye sublimation and I printed out letters and cut them in the letters size and heat transfer the print onto the knits. Supposedly I should use synthetic fibers in my knits for this print method because the print might not transfer well with natural fiber. However, I thought it was even better because the letters are meant to be old and the words can fade. So it actually match my concept well.





elements: ribbons, tape form fabrics

Silhouette  
Development



the idea of capturing hong kong scenery/ memory in films and stamps



old mail boxes

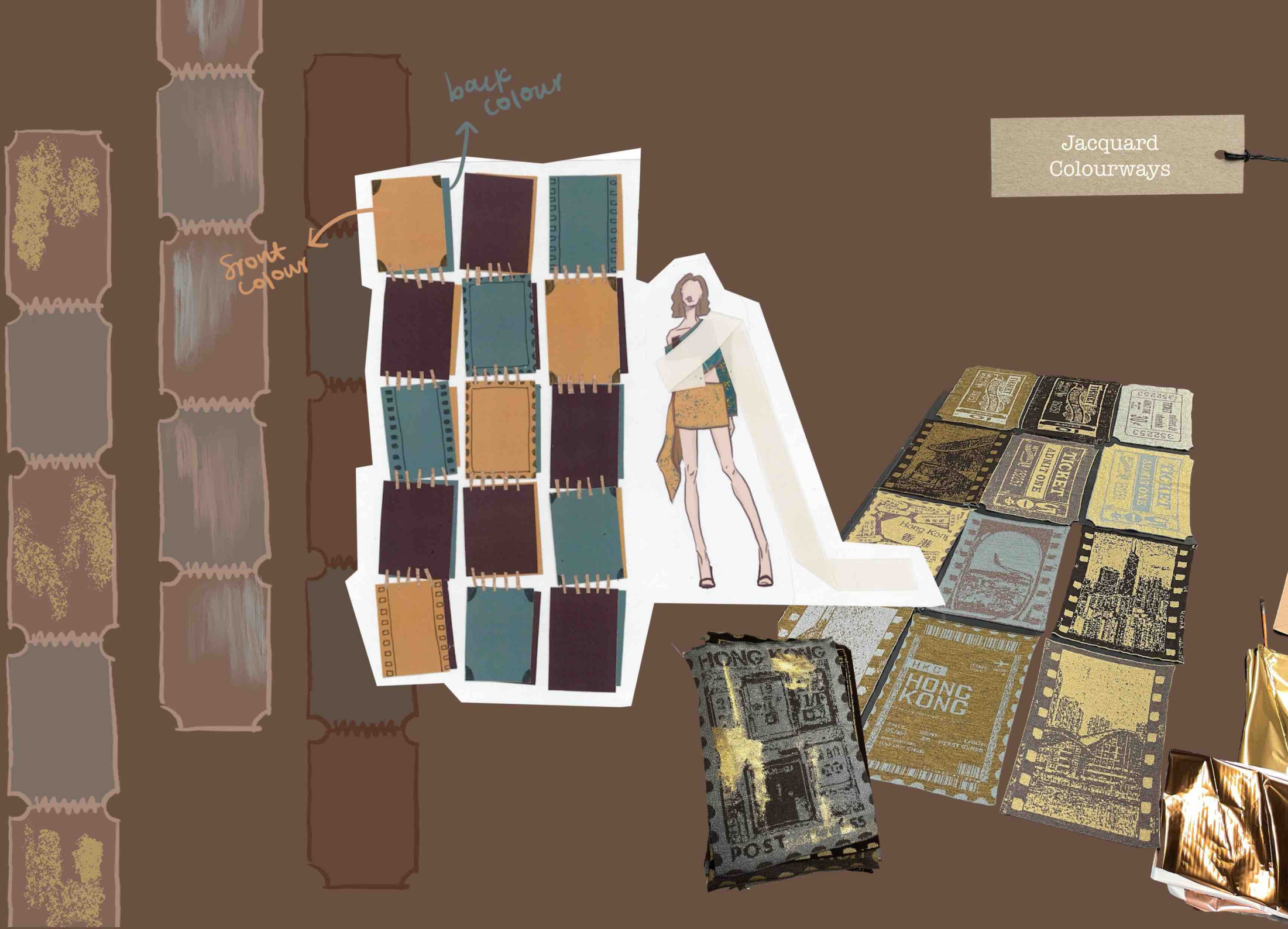


Hong Kong  
train stations  
paper money  
scenery

Being an international student from high school to university, this is the view I see every summer. Not only this is a part of me, always travelling. This also symbolises the journey of treasure seeking. I want to tell a story that I am flying out of Hong Kong and looking for treasure to collect and cherish.



Jacquard  
Colourways



back  
colour

front  
colour

HONG KONG

HONG KONG

POST

TICKET  
ADULT ONE

TICKET  
ADULT ONE







Fairisle  
Development

tarnished/ oxidized metal





**collect & cherish**

5gg Inlay



**collect & cherish**

5gg Inlay



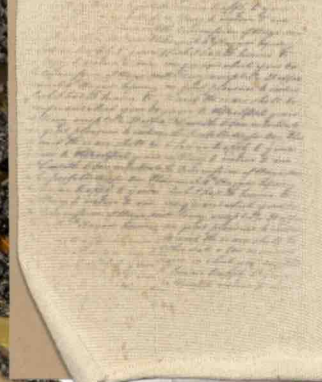
**collect & cherish**

Chain Crochet, embellishments



**collect & cherish**

10gg Half Milano, Dye Sublimation



**collect & cherish**

8gg Ladder, Elastic



Fianl Collection Fabrics

**collect & cherish**

Standard Guage Domestic Plain Knit, Gold Foil Print



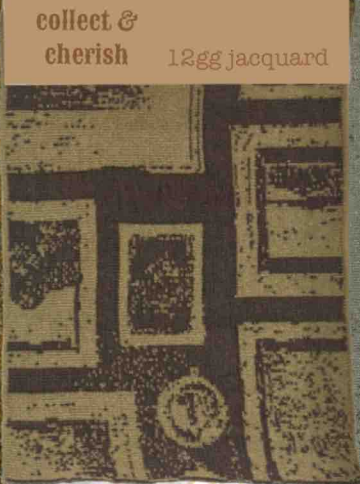
**collect & cherish**

Standard Guage Domestic Fairisle, Gold Foil Print, Handstitch



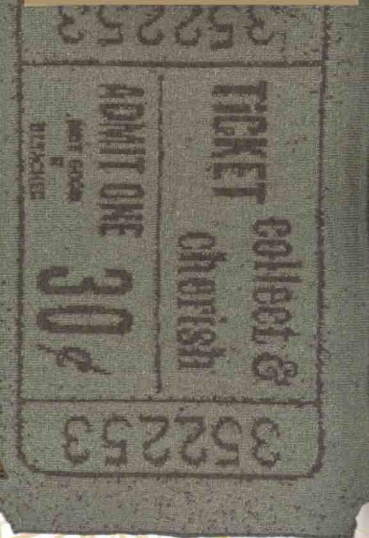
**collect & cherish**

12gg jacquard



**collect & cherish**

12gg Jacquard



**collect & cherish**

Standard Guage Domestic Fairisle







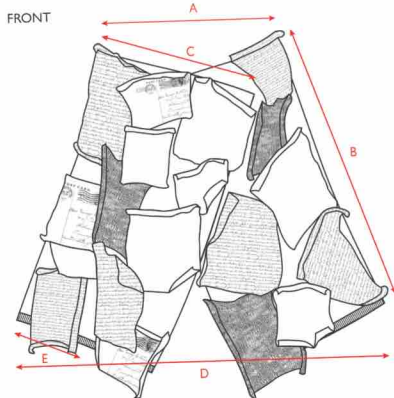













Final Collection  
Lineup





Outfit Breakdown:  
Look 1



PAPER COVERED TOP		SPECIFICATION	
<b>BASE FABRIC:</b> 5 gauge dubbed double bed inlay using one end of KETEN fluffy yarn and two ends of 10 gauge yarn <b>PAPER FABRIC:</b> 10 gauge double bed half milano using one end cream yarn, alternating colours Standard gauge domestic single bed, tension 2, using one end of BOYAR yarn		<b>TRIM INFORMATION:</b> Cuff Trim: 7 gauge single bed sandwich trim using two ends of cream yarns, linked on using 8 point linker	
<b>CONSTRUCTION:</b> - Join base panels together and create armhole by invisible hand stitch - Knit paper pieces on 7 gauge dubbed - Knit paper pieces on standard gauge domestic - Sublimation print on marked paper pieces - Invisible hand stitch paper pieces onto base panels		Domestic: 	Sublimation Print Pattern: 
<b>FRONT</b> 		<b>BACK</b> 	
 		 	
		<b>YARN INFORMATION</b> BOYAR TEXTILE- NM: 6 ECRU WITH GOLD SPARKLE COTTON / POLYESTER  FILATURA PAPI FA' SIO- 1/114,5 WHITE COTTON  UNKNOWN- N- BEIGE COTTON 4  UNKNOWN- CREAM COTTON  UNKNOWN- 1/12 CREAM  UNKNOWN- WHEAT TEXTURED  UNKNOWN- YELLOWISH CREAM LINEN  MATSUMURA- CREAM TEXTURED  KETEN TEKSTIL- 1.8NM TAN FUZZY FELTED 8% MOHAIR/ 56% ACRYLIC/ 20% POLYESTER/ 16% WOOL 