



# SISTERS OF THE DEEP

IMOGEN GARRICKS

CONCEPT

# THE SEAWOMEN

EXPLORING THE HIDDEN FIGURES OF  
SOUTH KOREA AND JAPAN: THE SEAWOMEN



REAL LIFE MERMAIDS



# FEMALE STRENGTH AND UNITY



WOMEN OF ALL AGES, MOSTLY 60-80,  
DEFY AGE LIMITS AND FREE DRIVE  
WITH NO OXYGEN FOR AROUND 20M.

MOST SEAWOMEN LEARN TO DIVE  
BEFORE THE AGE OF 10 FOLLOWING  
THEIR MOTHERS TRADITIONAL  
FOOTSTEPS



"SHE IS  
TOSSED  
BY THE  
WAVES BUT  
SHE DOES  
NOT  
SINK"

"PHYSICALLY STRONG AND  
COMPETENT WOMEN POSE A  
THREAT TO IDEOLOGIES OF  
MALE PHYSICAL SUPERIORITY  
AND THAT, IN ORDER TO  
CONTAIN THIS THREAT, THE  
MEDIA TEND TO ERASE SUCH  
WOMEN FROM VIEW."  
(DWORKIN, SHARI, WACHS,  
2009)



OCEAN POLLUTION AFFECTING THE SEAWOMEN'S LIVELIHOOD

# RESPECT FOR THE OCEAN

# CIRCLE MOTIFS



THE CIRCLE REPRESENTS ONE  
WORLD AND A UNITY BETWEEN THE  
WOMEN

SUSTAINABILITY



EXPERIMENTING WITH DIFFERENT COLOUR THREADS FOR QUILTING

WILL WE  
NEED  
SHELL  
PROTECTION  
IN OUR  
UNCERTAIN  
FUTURE?



EXPLORING HOW THE WETSUIT  
PROTECTS THE BODY FROM HARSH  
CONDITIONS AND UTILISING  
QUILTING TO CREATE SHELL  
PATTERNS



CONCEPT DEVELOPMENT



PROTECTIVE SHELL



THERE'S A LOOMING THREAT OF A MORE HOSTILE  
FUTURE ENVIRONMENT WHERE WE WILL NEED TO  
PROTECT OURSELVES THROUGH CLOTHING



DEVELOPING PROTECTIVE HOOD SHAPE

## OUTFIT 1 DEVELOPMENT

DESIGN DEVELOPMENT

CIRCLE MOTIFS REPRESENTING FEMALE UNION



TESTING DIFFERENT COLOUR WAYS OR FINAL DESIGN

3D AND DESIGN DEVELOPMENT

OUTFIT 1 DEVELOPMENT





HOOD ADAPTATION SHIELDING  
FROM WEATHER CHANGE

TAKING INSPIRATION FROM  
THE AMAS HOOD TIE

FINAL FABRIC SELECTION

# OUTFIT 1. DEVELOPMENT

3D AND DESIGN DEVELOPMENT



OUTFIT 2 DEVELOPMENT

DEVELOPING MY SECOND TOILE TOP INSPIRED BY THE TIGHT LOOK OF THE WETSUIT

CIRCLE DETAILING THROUGH THE USE OF EYELETS AND POPERS

3D AND DESIGN DEVELOPMENT







DEVELOPING BIOPLASTICS THAT BIODEGRADE TO COMBAT OCEAN PLASTIC POLLUTION

SEAWEED CAN BE UTILISED TO MAKE AGAR AGAR WHICH IS USED TO MAKE BIOPLASTICS



NET BAGS

CIRCLE BAGS

TAKING INSPIRATION FROM NETTING WHILST STILL USING THE CIRCLE MOTIF

# BIOPLASTIC DEVELOPMENT

SUSTAINABILITY



# COLOUR PALETTE

COLOUR INSPIRED BY OCEAN HUES AND THE  
SEAWOMEN'S GARMENTS AND APPARATUS



SAND



SANDSTONE



TIDE



DEEP



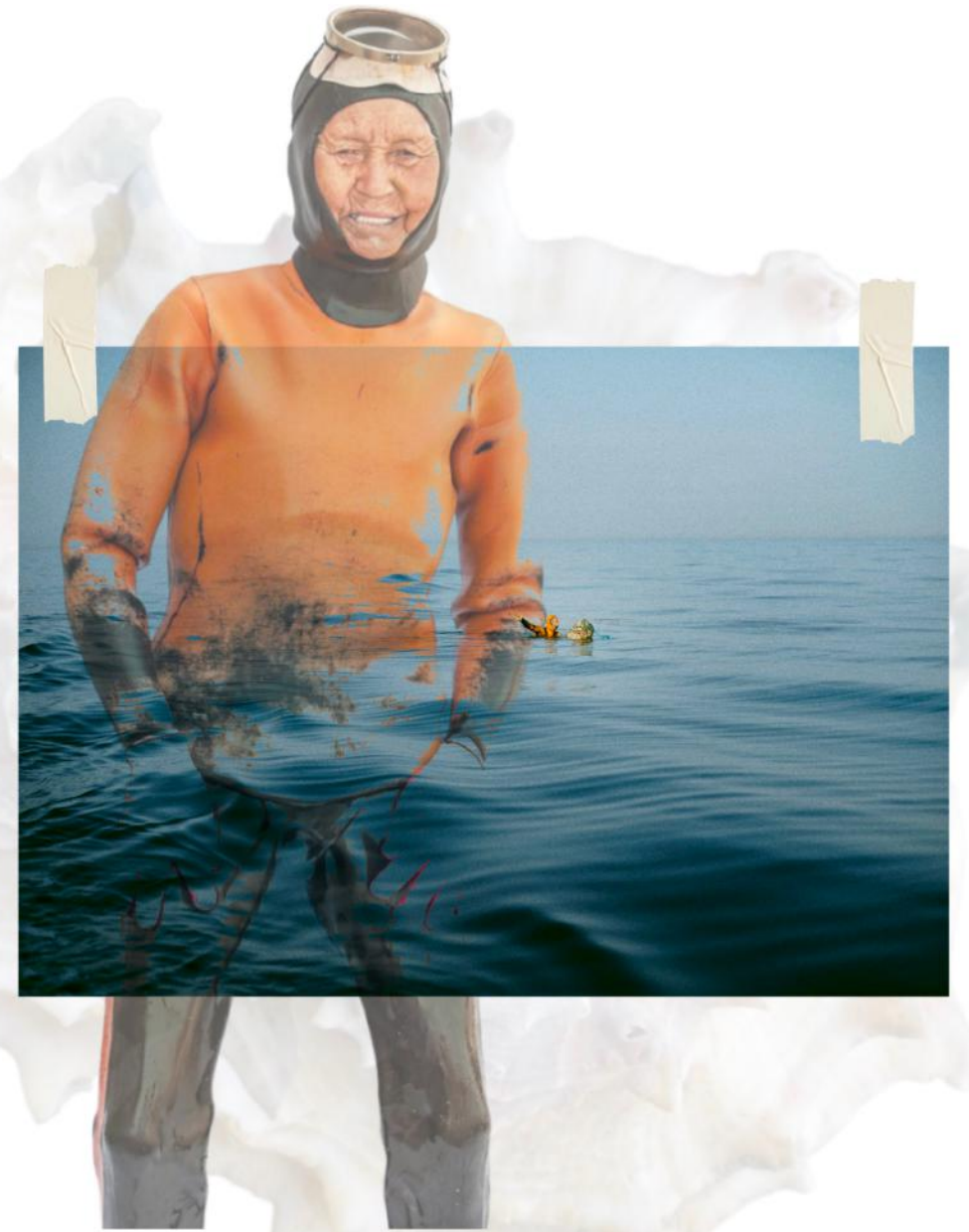
PRAWN



SQUID



PEARL



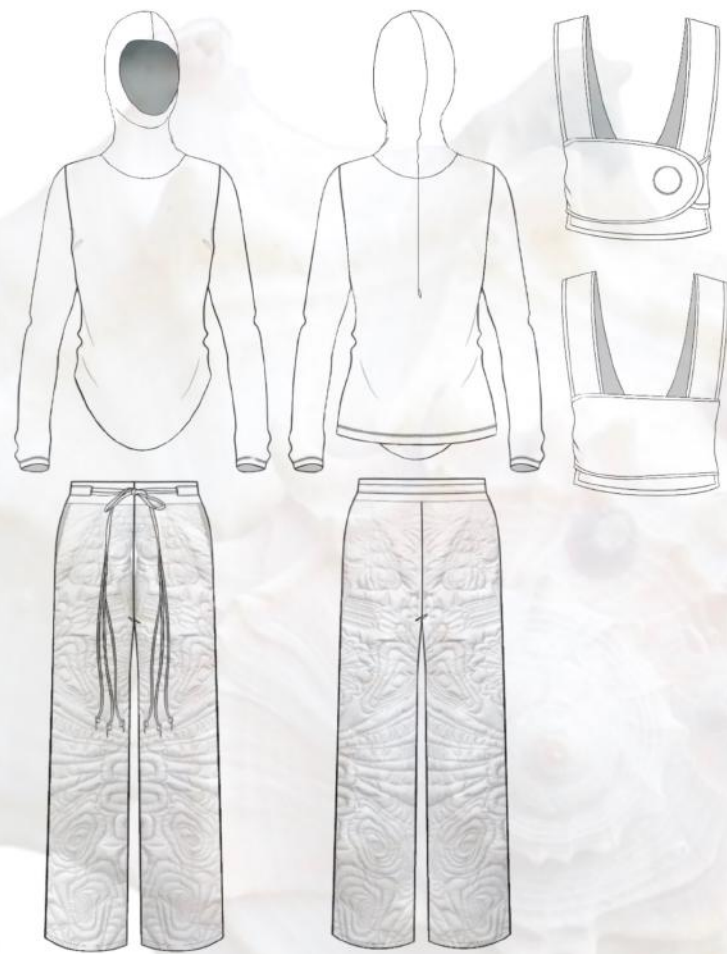
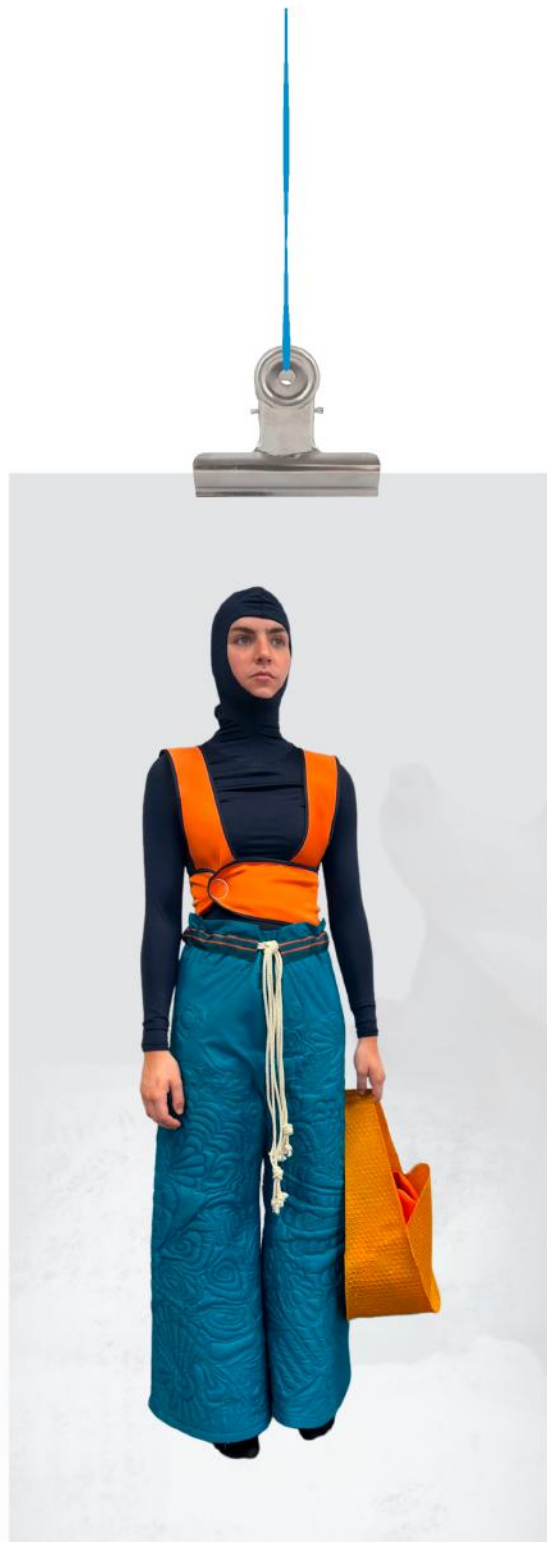
COLOUR DEVELOPMENT





ILLUSTRATED LINE UP AND MATERIAL SWATCHES





## OUTFIT BREAKDOWNS











