

THE REMAINS OF THE DAY



IRIS ZHITING GUO
BA (HONS) FASHION DESIGN
FINAL MAJOR PROJECT

CONCEPT

Inspired by the abandoned ruins in nature, this project explores the inevitable disappearance of our existence and the correspondences between earth and body. Utilising the juxtaposition of natural abundance and fragility of the man-made, I hope this project offers consolation for the ephemerality of our time.





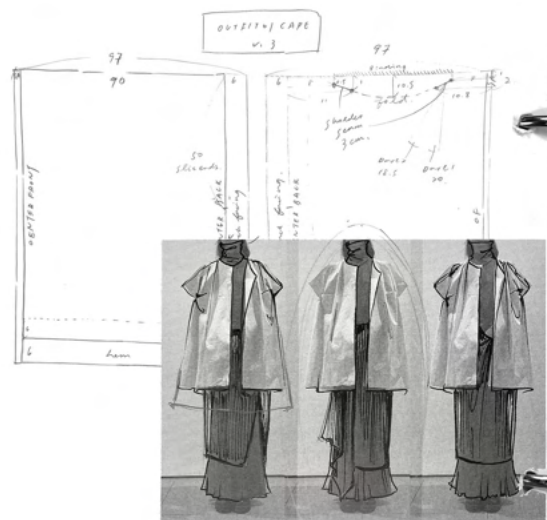
TEXTILES

Inspired by the indigenous people who once lived upon the lands of the ruins and their heritage in textiles, I developed fully fashioned and zero waste knitwear using Stoll programming.



PROCESSES & 2D DESIGN DEVELOPMENT

Responding to the concept of the 'remains' and the simplicity of indigenous dressing, I explored subtraction cutting using the remaining fabric, and zero waste methods to generate silhouette ideas.



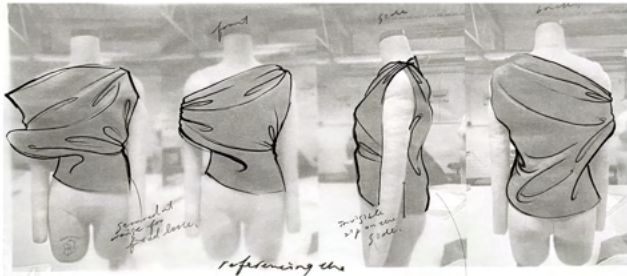
*lucchi with knit
eye in cape coat*



Toile Processes.



DEVELOPMENT OF OUTFIT 1



refining the indigenous crossing



asymmetrical draped shoulder



knotted shoulder detail?



add another pleat on the sleeve.

more visible upon the side.

more sleeve showing on the left



developing a minimal waist longer pattern.



DEVELOPMENT OF OUTFIT 2



Cream jacquard cotton linen



Merchant & Mills 185 linen



Sage Italian wool suiting



Organic Japanese crinkle cotton



Dry meadow organic cotton



Merchant & Mills 8 oz organic sanded twill



Craig Green deadstock poly-cotton



Merchant & Mills 8 oz organic sanded twill



Cream cotton wool distorted floats knit



Swamp cotton chenille distorted floats knit



Moss wool bouclé distorted floats knit



Merchant & Mills 185 linen



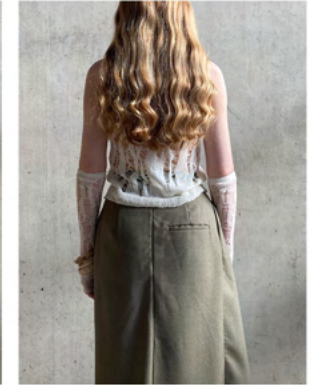
Merchant & Mills 8 oz organic sanded twill

FABRIC & COLOURS

Keeping sustainability in mind throughout this project, I sourced natural fabrics, yarns, threads and bindings from responsible suppliers. The only synthetic fabric involved is the deadstock lining from Craig Green.

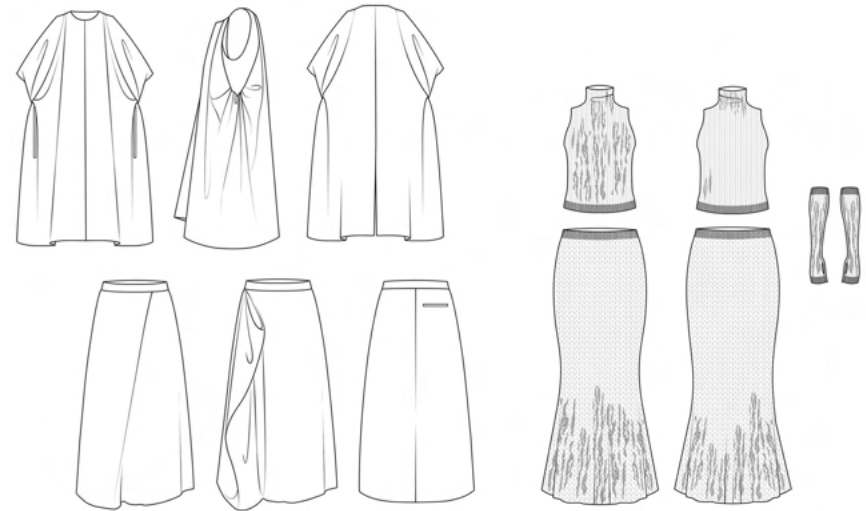


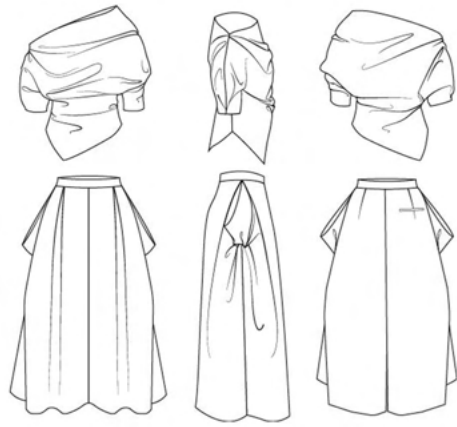
FINAL LINEUP



OUTFIT 01/

Minimal waste cotton linen coat, cotton wool vest top and hand warmers, wool overskirt, cotton chenille layering skirt.





OUTFIT 02/

Linen draped top, minimal waste twill trousers, bouclé knit scarf and leg warmers.





ACCESSORISED WITH CLAY

Clay is a naturally biodegradable material sourced directly from the earth. With the intention to craft a collection that would eventually decay and return to nature, I made ceramic jewellery with my own formulated glaze.



Models/ Amelia and Willow
Photography & directions/ Iris





Model/ Amelia
Photography & directions/ Iris



