

# INNER ALCHEMY

F&P Portfolio  
Ella Archer  
NTU





"THINK TO A BUTTERFLY TO SEE  
ENOUGH A METAMORPHOSIS BEEN  
BELLIED FROM MY OWN COLOUR"  
- BOON (1912)



**Metamorphosis**  
The process of change from one form to another, especially from an animal of one stage to another stage of a different form.  
The word metamorphosis comes from the Greek words 'meta' (change) and 'morpho' (form).  
In biology, metamorphosis is a process by which an organism undergoes a dramatic change in its body structure and function during its life cycle.  
Examples of metamorphosis include the transformation of a caterpillar into a butterfly, a tadpole into a frog, and a larva into an adult insect.

PROCESS OF CHANGE



METAMORPHOSIS



"THEY'VE METAMORPHOSIS"  
- BOON (1912)

## TRANSFIGURATION

"I COULD HAVE TAKEN MYSELF TO  
COURT LAST WINTER FOR THE  
WAY I SPENT THE WEEK OF ME. I  
COULD EVEN BRING IT TO MYSELF  
- ELIAS KUNZ THE METAMORPHOSIS

"A CHANGE IN FORM OR APPEARANCE - METAMORPHOSIS  
AN ESCAPING OR BREAKING OF USUAL CHOICE"

Kafka  
The Metamorphosis

"RELIGION HAVE PROVED THAT THE HUMAN CONCEPT  
OF GODHEAD IS NOT SO AN INSECT METAMORPHOSIS"  
- CAROL P. RICHARDS MS

## SELF DISCOVERY



# INNER ALCHEMY

## Adolescence: A Metamorphosis

Adolescence is a time of great personal growth and change. It is a period of transition from childhood to adulthood, a time when the body, mind, and emotions are all undergoing significant changes. This is a time of self-discovery and exploration, a time when you begin to form your own identity and values. It is a time of challenge and opportunity, a time when you learn to navigate the complexities of the world around you. Embrace the changes and embrace yourself.

**Adolescence** is a time of great personal growth and change. It is a period of transition from childhood to adulthood, a time when the body, mind, and emotions are all undergoing significant changes. This is a time of self-discovery and exploration, a time when you begin to form your own identity and values. It is a time of challenge and opportunity, a time when you learn to navigate the complexities of the world around you. Embrace the changes and embrace yourself.

Adolescence is a time of great personal growth and change. It is a period of transition from childhood to adulthood, a time when the body, mind, and emotions are all undergoing significant changes. This is a time of self-discovery and exploration, a time when you begin to form your own identity and values. It is a time of challenge and opportunity, a time when you learn to navigate the complexities of the world around you. Embrace the changes and embrace yourself.

Adolescence is a time of great personal growth and change. It is a period of transition from childhood to adulthood, a time when the body, mind, and emotions are all undergoing significant changes. This is a time of self-discovery and exploration, a time when you begin to form your own identity and values. It is a time of challenge and opportunity, a time when you learn to navigate the complexities of the world around you. Embrace the changes and embrace yourself.

## THE JOURNEY OF INDIAN IDENTITY

Meet Dr. Prakash, Dr. Anjali, and Dr. Arjun

Dr. Prakash, Dr. Anjali, and Dr. Arjun

There are many examples of "inner alchemy" that people may already work, one example being mental health struggles. I myself have struggled with anxiety over the years, so this concept resonates with me as I have navigated through dark times and emerged stronger. An example I have focused on during this research is the mental transformation we undertake when transitioning from childhood to adulthood.

My project and final collection seeks to celebrate the beauty of change and the courage it takes to undergo a personal transformation, connecting with those who have returned or are undergoing the transformative journey within themselves.

Testing my own design and technology placement



## COAT DEVELOPMENT

Experimenting with our design that will be different from jeans



Collaborating with research and design teams to generate high resolution

I wanted to use a contrasting fabric material such as leather to provide a luxury appeal, against the other elements that include the underlying theme of transience.

I wanted to experiment with large scale design that allows 'relaxing' and through the use of pattern created by an all-over design rather than purely the white creating an elegant and striking silhouette.

# BLAZER DEVELOPMENT

For this design, I have chosen a classic, structured blazer with a notched lapel and a single-breasted front. The fabric is a high-quality, textured wool blend, which adds depth and luxury to the design. The color is a neutral, light beige, which is versatile and timeless.



Shoulder detail



Shoulder and front silhouette for my blazer design.



Technical drawing of the blazer, showing the front view and the back view. The drawing includes the collar, lapels, and the front panel. The back view shows the shoulder blades and the waistline.



Shoulder and front silhouette for my blazer design.

Technical drawing of the blazer, showing the front view and the back view. The drawing includes the collar, lapels, and the front panel. The back view shows the shoulder blades and the waistline.

# DRESS DEVELOPMENT

The textured fabric supports the cascading design of both neckline and neckline through and heavy.

With full draped fabric, following the slope of a wing, creating an elegant silhouette in the dress.



Studying the silhouette, creating a look.

Manipulating fabric on the stand.



Supporting the neckline.



Draping my textured fabric on the stand to create potential design alternatives for a top or dress.



# TROUSER DEVELOPMENT

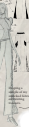
Normal waistline  
Normal waist



High-waisted  
gathers at the waist  
at the waist



High-waisted  
gathers at the waist



High-waisted  
gathers at the waist



High-waisted  
gathers at the waist

Flared waistline  
flaring out at the  
hips, creating an  
effect of breaking the  
waist along to the  
ankles.





## PRINT DEVELOPMENT

My print design has a foundation in the visual art of "shibubiyōsuwanu" (sushi) which focuses on all eyes. This led to the idea of incorporating animal motifs, patterns and arrangements.



Work involving an eye-printed fabric, using an alternating fabric pattern to create an organic, intricate and different fabric texture.

I have designed a repeated print which was inspired by the Japanese moth it was inspired by, the design used colors pulled off the moth and thought the eye design on the wing was interesting and visually striking. I wanted to incorporate a moth design rather than a butterfly as they are a variety of creatures from light to dark, which I thought and managed for my concept. I digitally drew these print arrangements and wanted to achieve an abstract effect.



## FABRICS & COLOUR PALETTE

Shell Brown, Vegetable Tanned, from skin leather tanned in a traditional way from the most healthy

100% Wool Jersey fabric



Many fabrics made from thermoplastic polymers using a cast made meant to give a water finish.

100% cotton twill woven fabric with a water repellent finish

Medium weight 100% cotton twill fabric

Wool Jersey with no back froms made from ethical sources, nylon and elastane

Silk fabric made from 100% natural polymer and dyed using environmentally friendly water repellent color



PANTONE®  
2005C



PANTONE®  
2135C



PANTONE®  
2145C



PANTONE®  
2125C



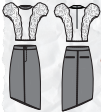
PANTONE®  
2025C

Our earthy and harmonious colour palette, inspired by the colours exhibited in the forest landscape itself.

LINE-UP



OUTFIT BREAKDOWN 1&2



OUTFIT BREAKDOWN 3&4



OUTFIT BREAKDOWN 5&6



