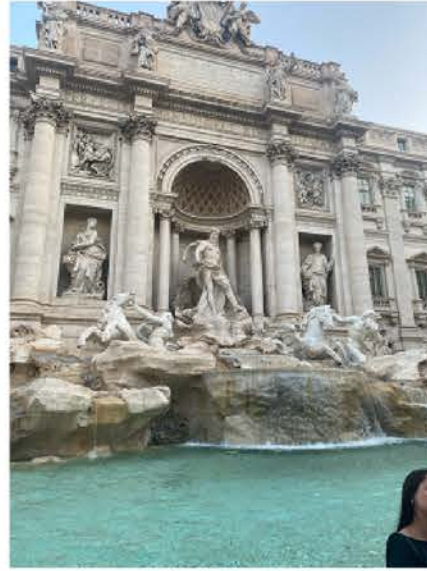


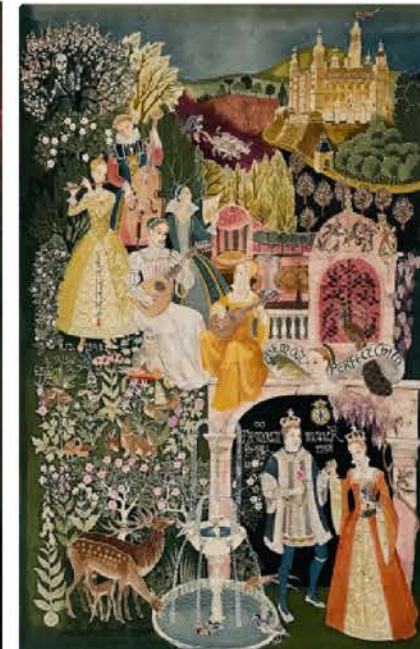
HISTORIC OPULENCE CONCEPT BOARD



ROYAL,
LUXURY,
ELEGANT,
RELIGIOUS,
HOLY,
REGAL,
OSTENTATIOUS,
FRILLS,
SMOCKING,
PEARLS,
GRANDOUR



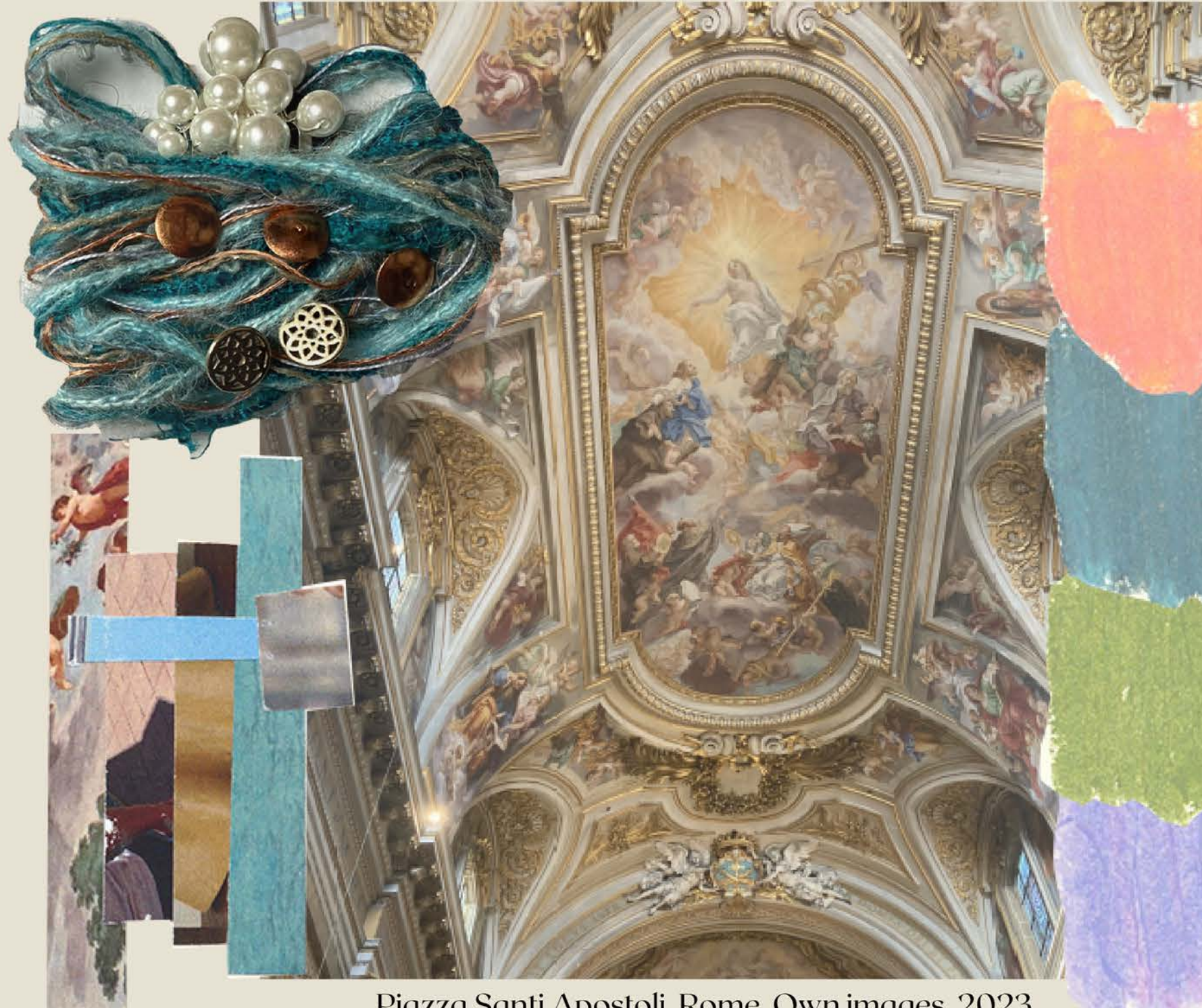
HISTORIC OPULENCE COLOUR BOARD



LUXURIOUS,
HEAVENLY,
ROYAL,
REGAL,
WEALTHY,
SPLENDOUR,
HISTORIC,
INDULGENT,
SILKY,
ESTABLISHED.

HISTORIC OPULENCE

C
O
L
O
U
R



Piazza Santi Apostoli, Rome, Own images, 2023

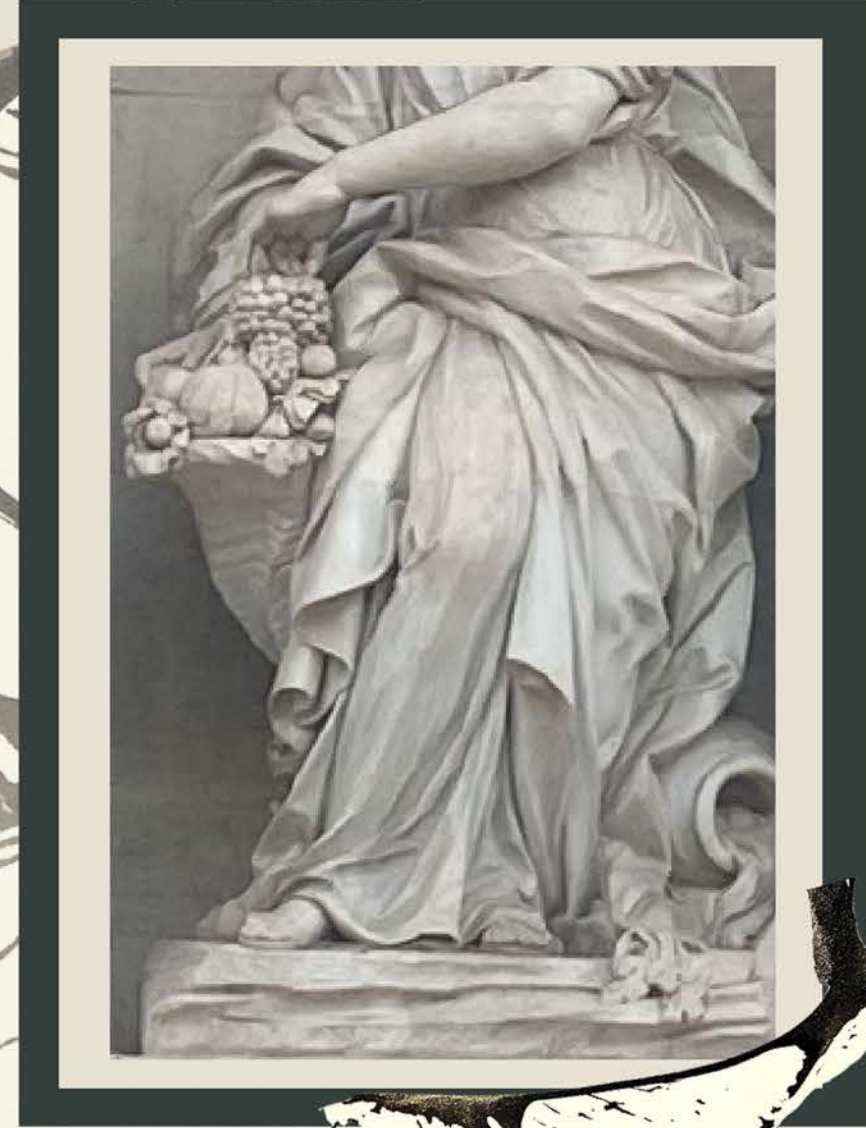
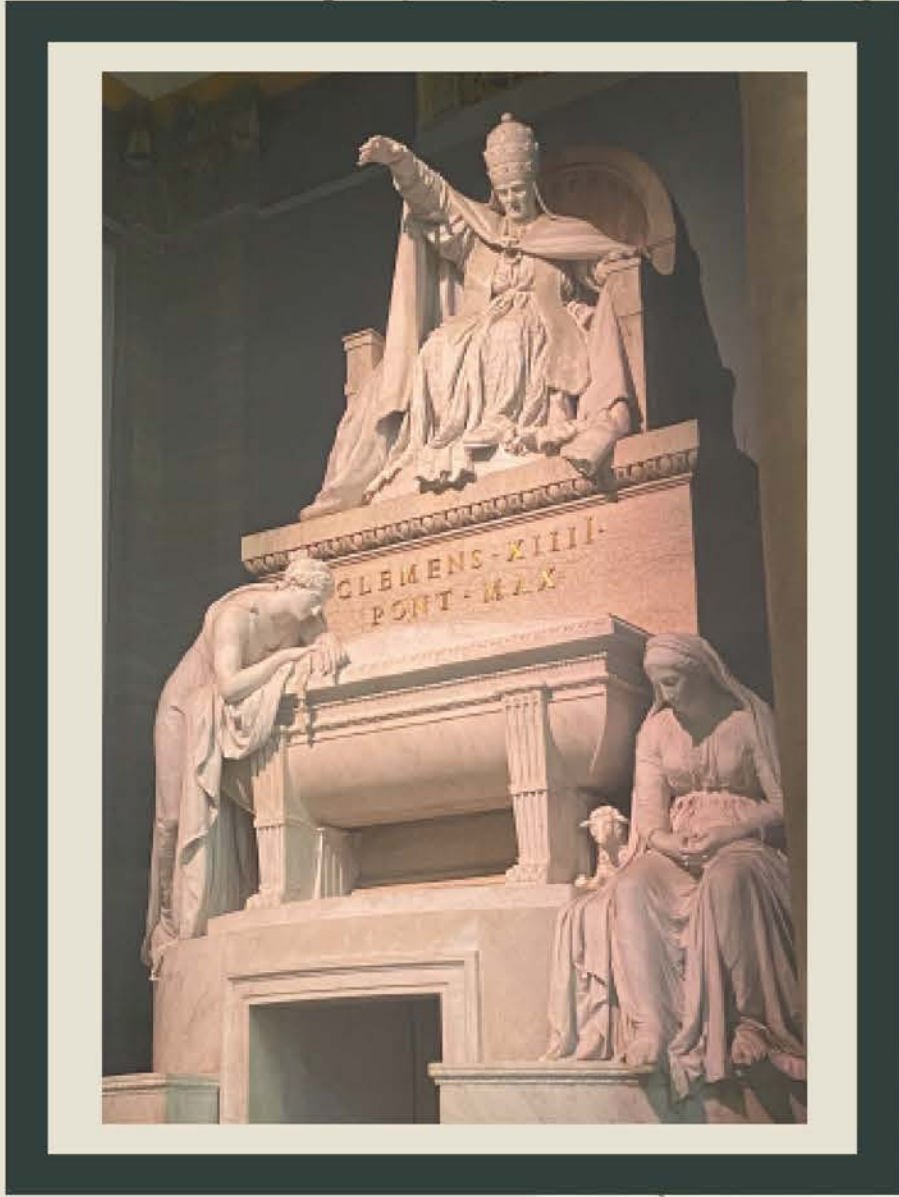


D
E
V
E
L
O
P
M
E
N
T

HISTORIC OPULENCE

MARK MAKING

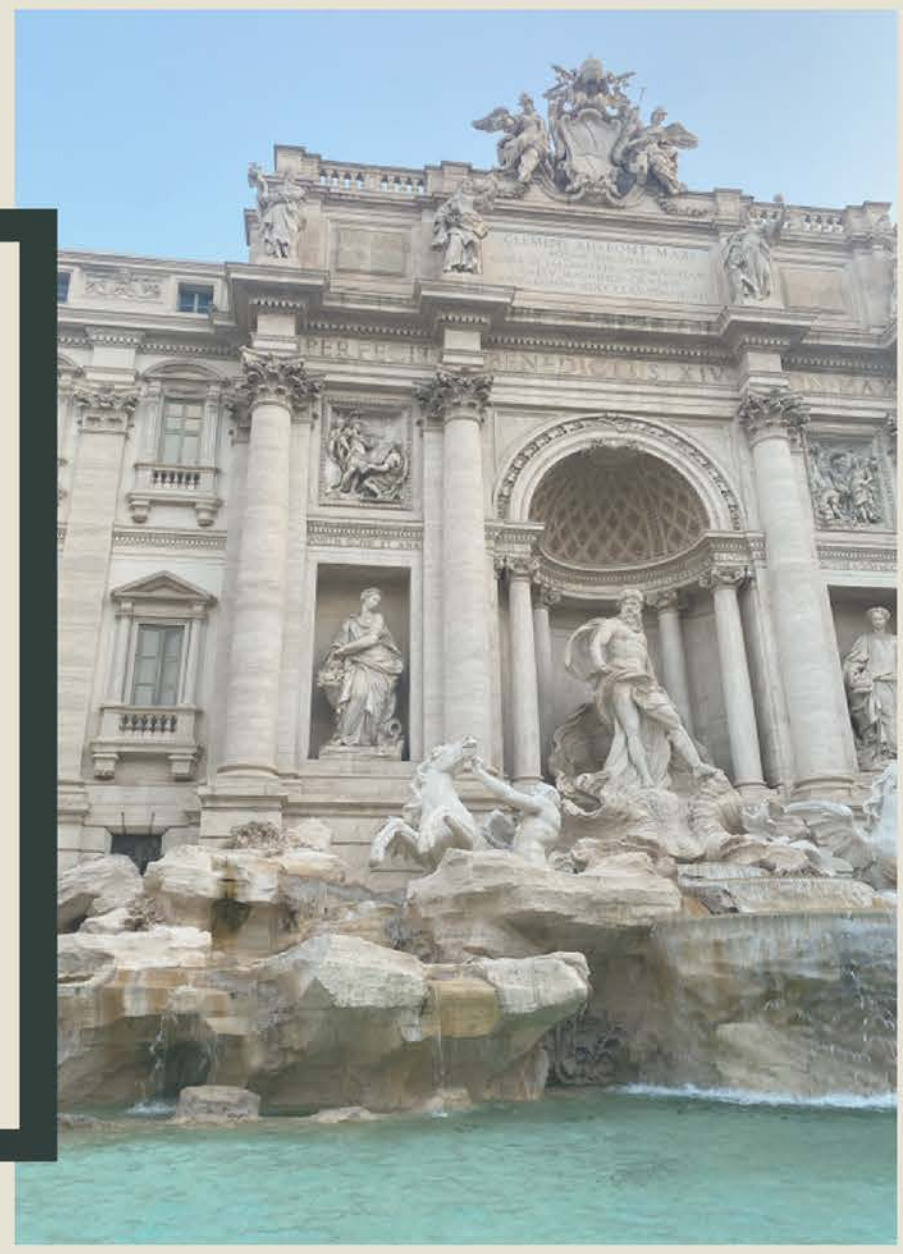
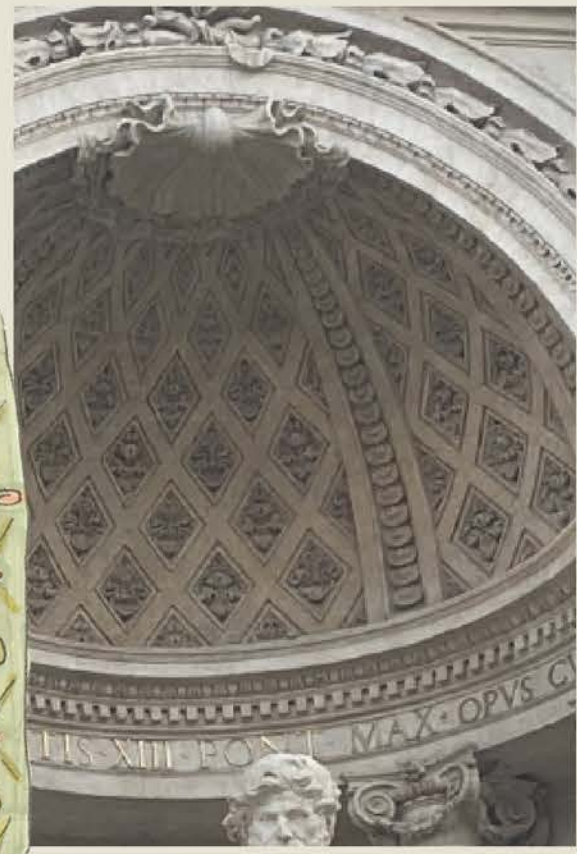
IPiazza Santi Apostoli, Rome, Own images, 2023



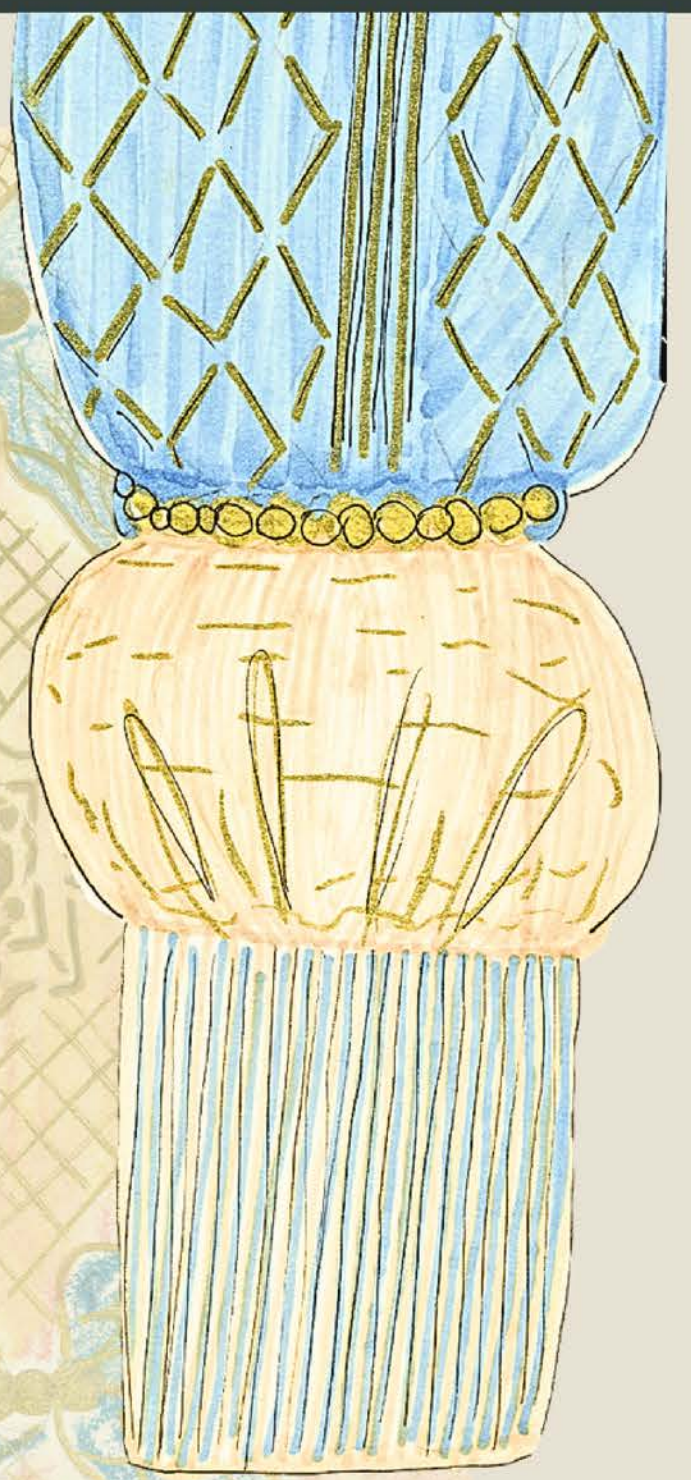
Trevi Fountain, own image, 2024

HISTORIC OPULENCE

PRIMARY
RESEARCH

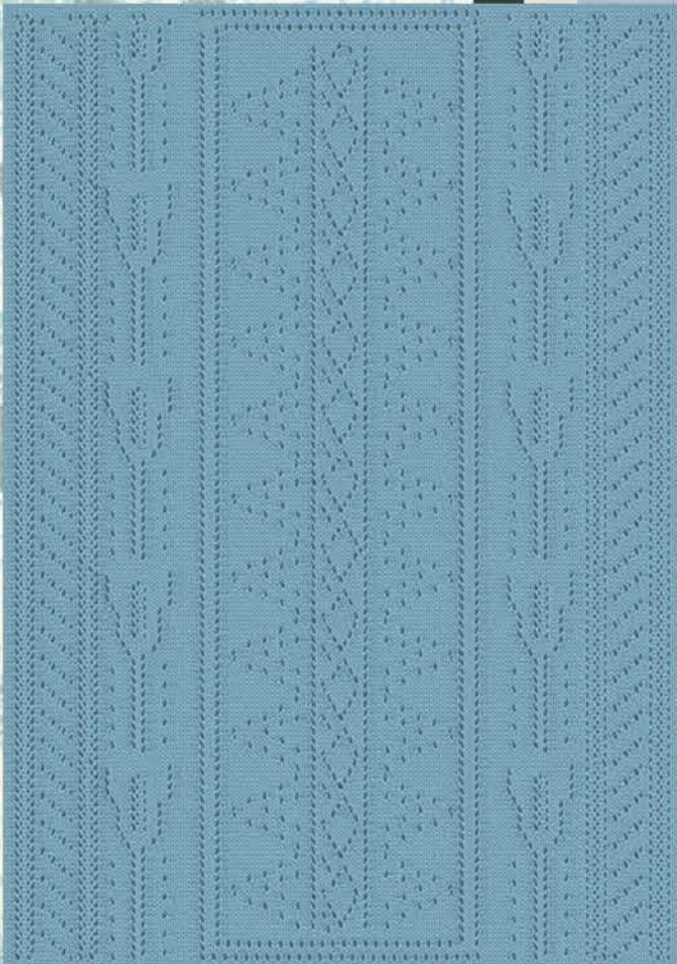


Trevi Fountain, ownimage, 2024



HISTORIC OPULENCE

PRIMARY RESEARCH

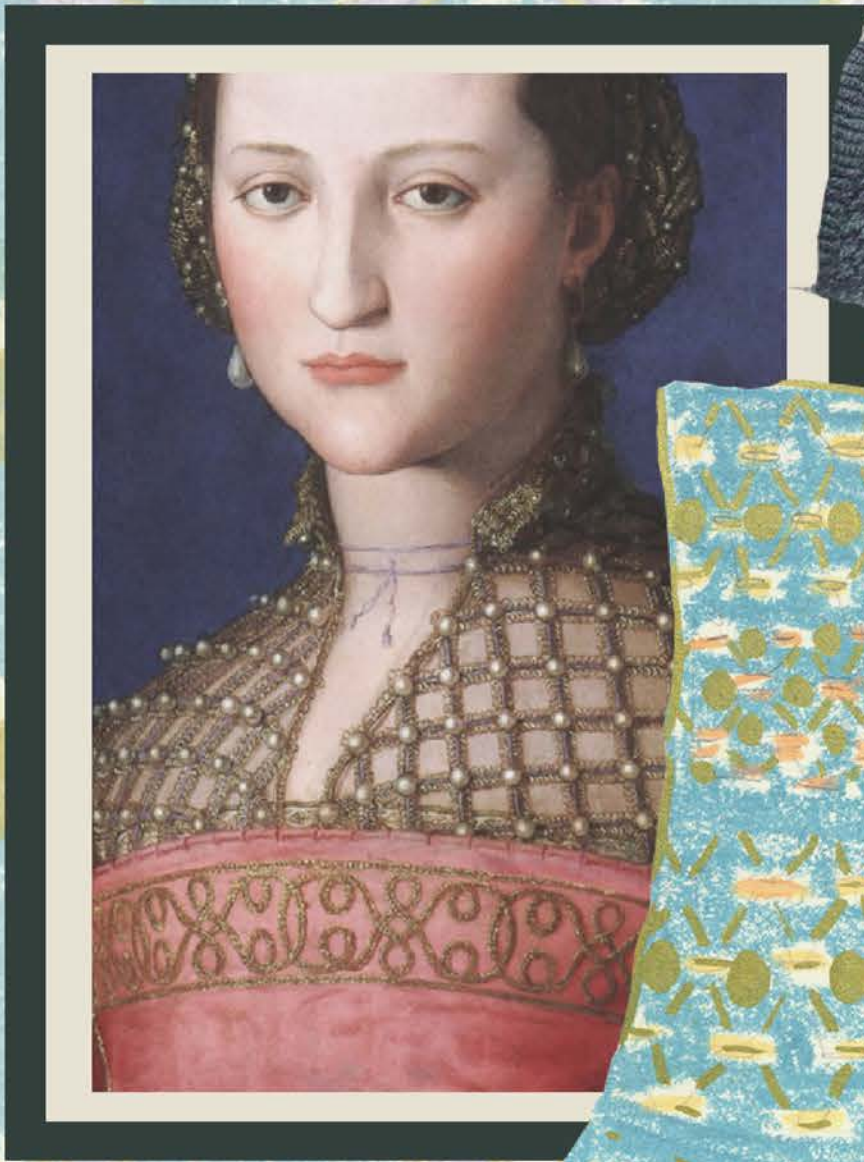


Column of Marcus Aurelius, Rome, Own images, 2023



PATTERN DEVELOPMENT

Portrait of Eleanor Toledo, 1543



HISTORIC OPULENCE

PATTERN DEVELOPMENT



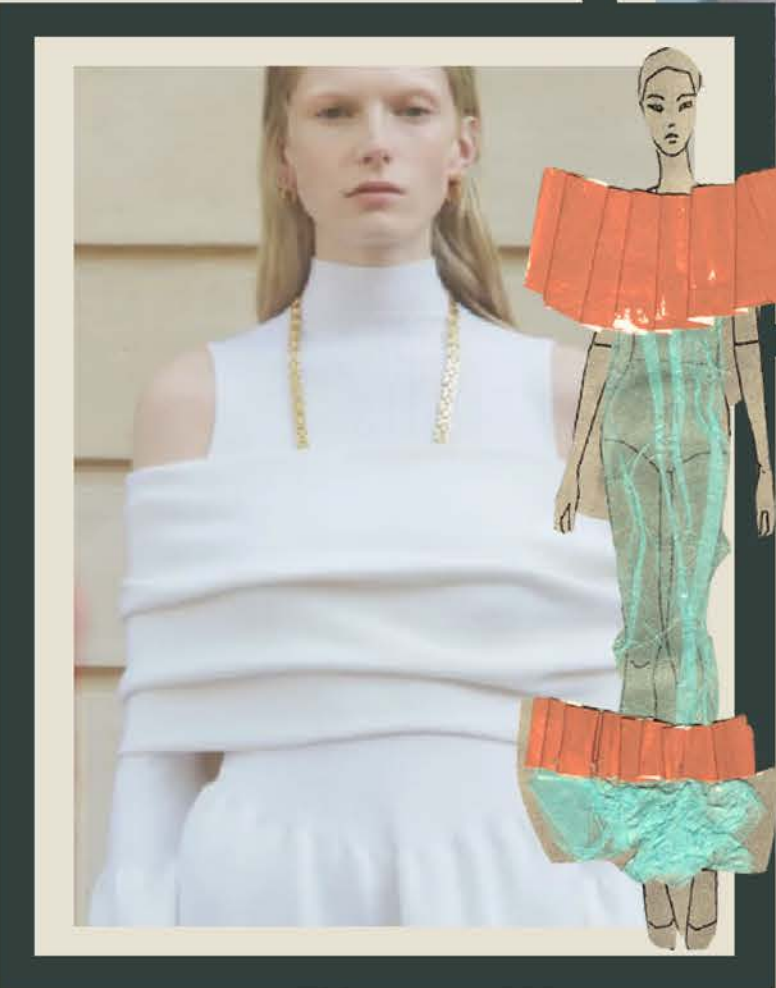
portrait of Elizabeth Cary,
Viscountess Falkland



HISTORIC OPULENCE

SILHOUETTE DEVELOPMENT

Richard Quinn 2023



Chloe Resort 2024



HISTORIC OPULENCE

Simone Rocha X Moncler SS2019



Bora Aksu, WGSN, 2024



SILHOUETTE
DEVELOPMENT

Historic Opulence:
Amelia Fravigar
N0993215
FKDN30003/04: Resolutions: P & C for FKD & KT 202324

Sample two:
Standard Gauge domestic knit,
Hand transfer lace,
Elongated stitches,
Silk,
Mercerised cotton

Historic Opulence:
Amelia Fravigar
N0993215
FKDN30003/04: Resolutions: P & C for FKD & KT 202324

Sample seven:
Standard gauge domestic,
Hand transfer lace,
Elongated stitches,
Wool,
Silk

Historic Opulence:
Amelia Fravigar
N0993215
FKDN30003/04: Resolutions: P & C for FKD & KT 202324

Historic Opulence:
Amelia Fravigar
N0993215
FKDN30003/04: Resolutions: P & C for FKD & KT 202324

Sample ten:
Standard Gauge domestic knit,
Shaped knit,
Crochet,
Wool,
Silk,
Mercerised cotton,
Viscose



Historic Opulence:
Amelia Fravigar
N0993215
FKDN30003/04: Resolutions: P & C for FKD & KT 202324

Sample five:
Standard gauge domestic,
Hand transfer lace,
Elongated stitches,
Lifted stitching,
Pearl detailing,
Silk,
Wool,
Mercerised cotton,
Viscose,
Pearl

Historic Opulence:
Amelia Fravigar
N0993215
FKDN30003/04: Resolutions: P & C for FKD & KT 202324

Sample ten:
Standard Gauge domestic knit,
Shaped knit,
Crochet,
Wool,
Silk,
Mercerised cotton,
Viscose

FINAL SAMPLES



Historic Opulence:
Amelia Fravigar
N0993215
FKDN30003/04: Resolutions: P & C for FKD & KT 202324

Sample nine:
Standard gauge domestic,
Wave punch card,
Viscose,
Wool

Historic Opulence:
Amelia Fravigar
N0993215
FKDN30003/04: Resolutions: P & C for FKD & KT 202324

Sample six:
12G Shima lace,
Gathered frills,
Viscose



Historic Opulence:
Amelia Fravigar
N0993215
FKDN30003/04: Resolutions: P & C for FKD & KT 202324

Sample six:
12G Shima lace,
Gathered frills,
Viscose



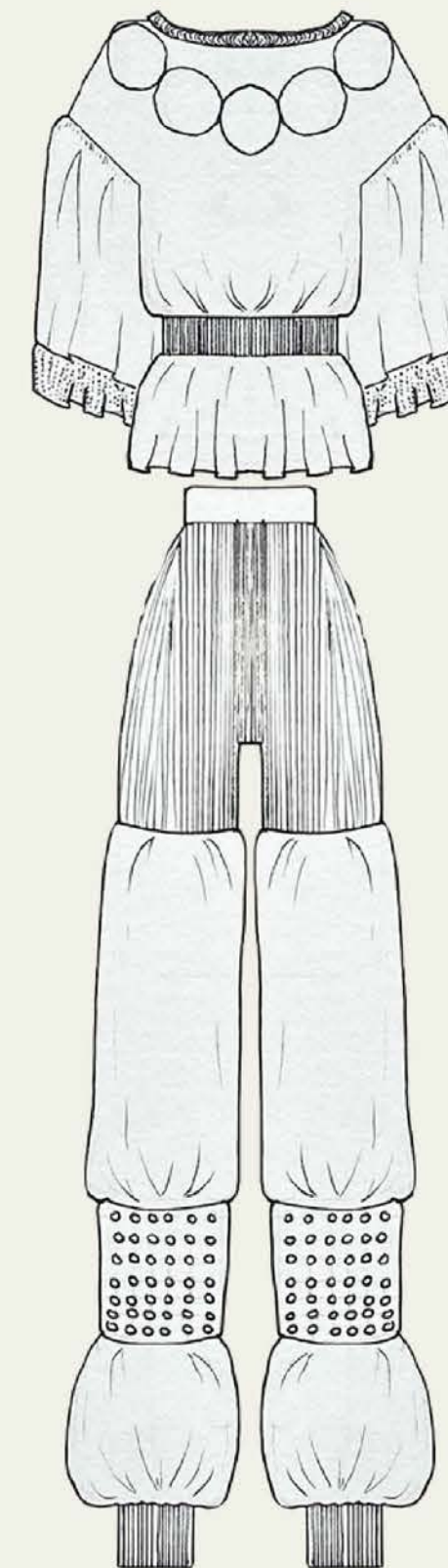
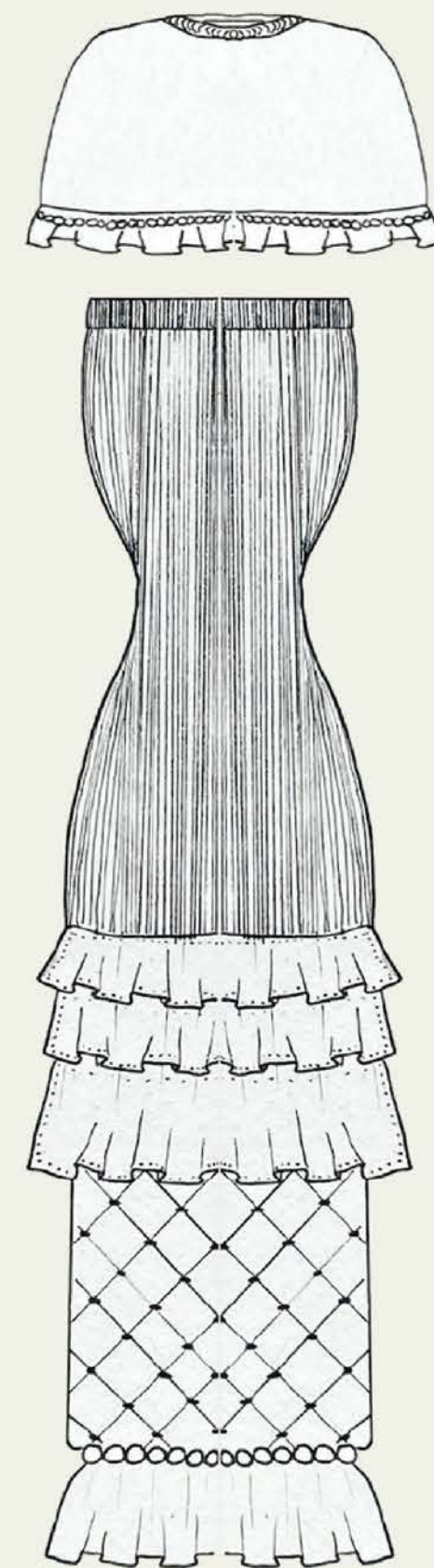
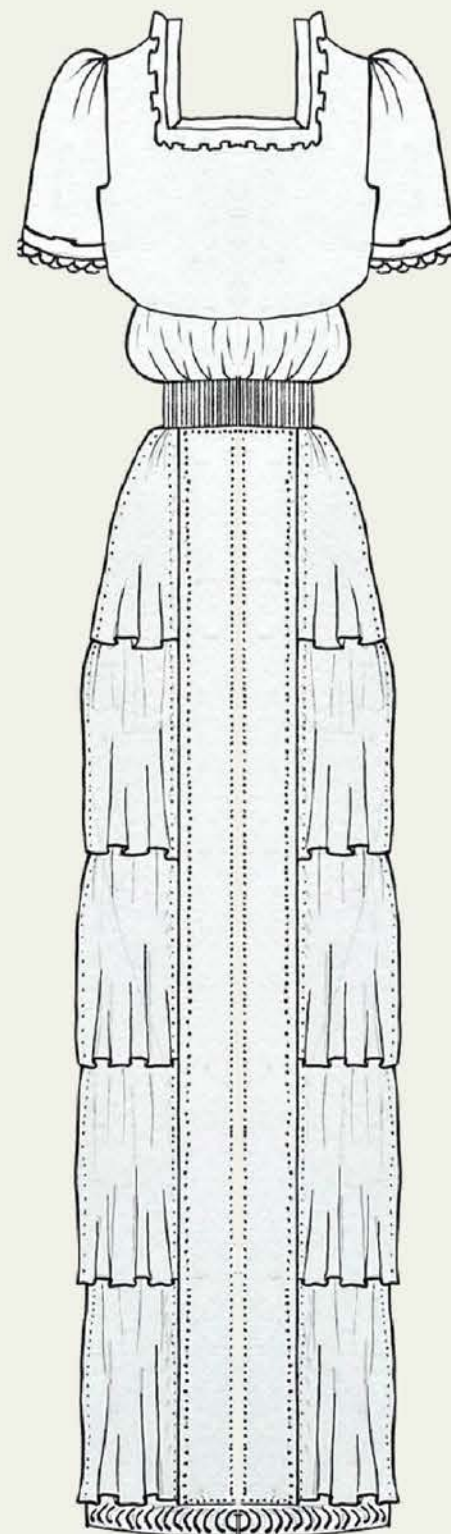
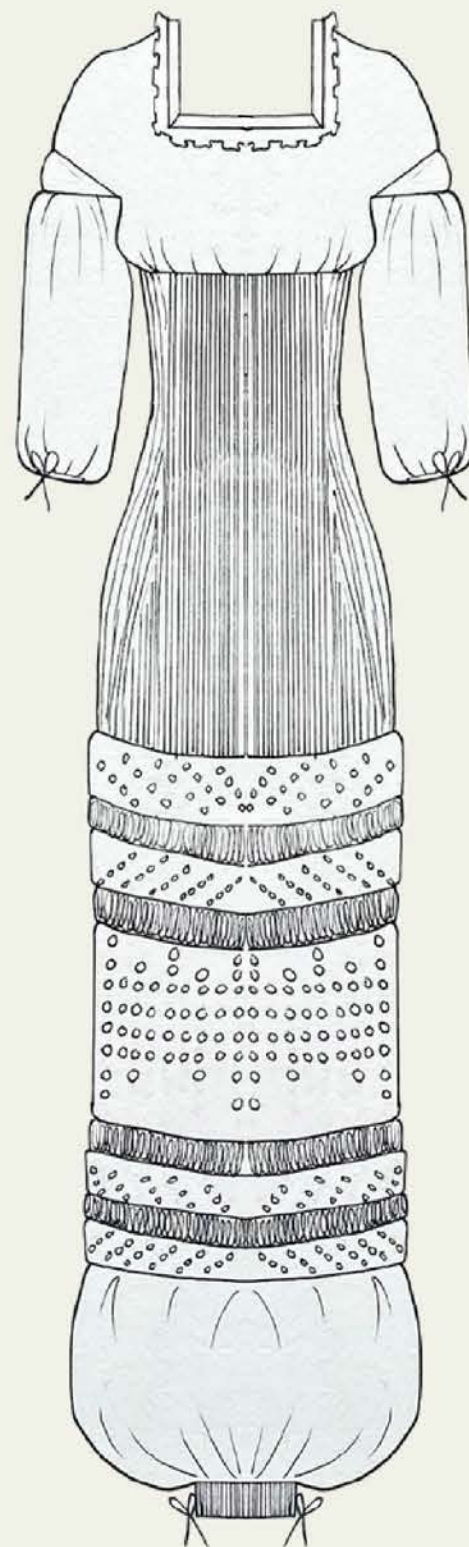
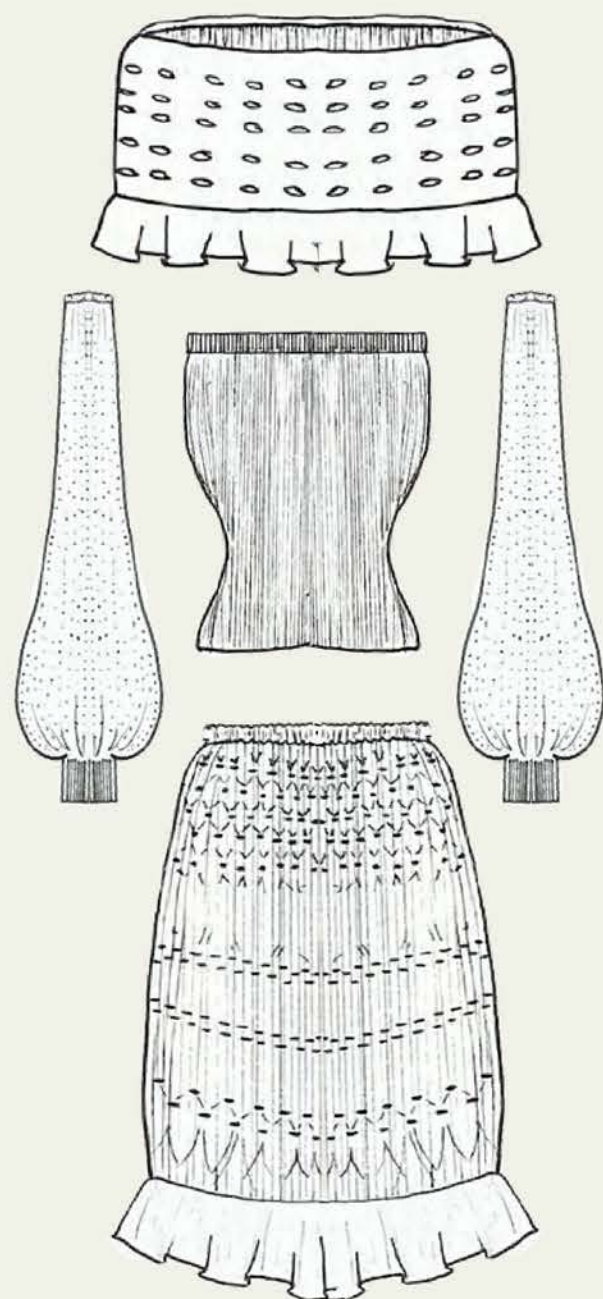
HISTORIC OPULENCE

H
I
S
T
O
R
I
C

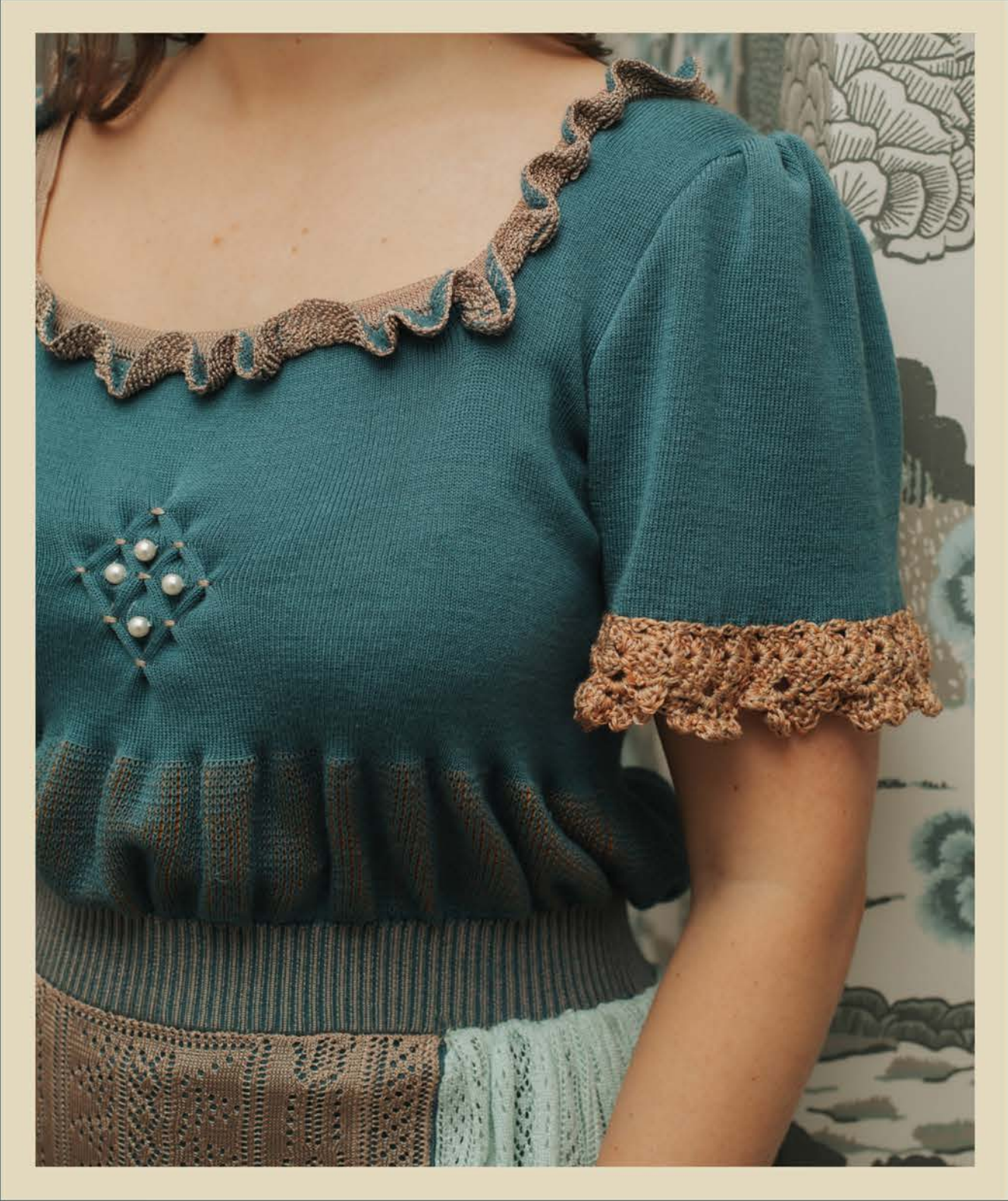


O
P
U
L
E
N
C
E

COLLECTION SPECIFICATION



HISTORIC OPULENCE



PHOTOSHOOT OUTCOMES

