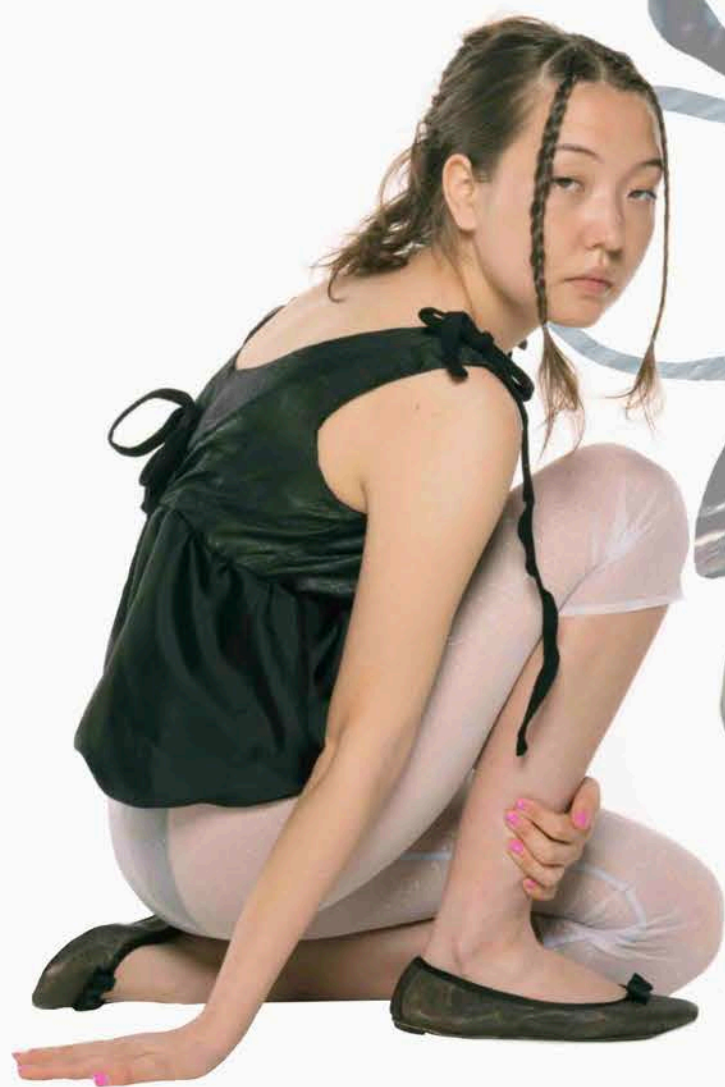


Salacia is a spring/summer evening wear collection based on sea salt goddesses, the idea of illusion and what we wear underneath our clothing.

The visual inspiration stems from the Ocean and I designed with insulating shapes, the push and pull of the tied and the silver glint on the waters surface in mind.

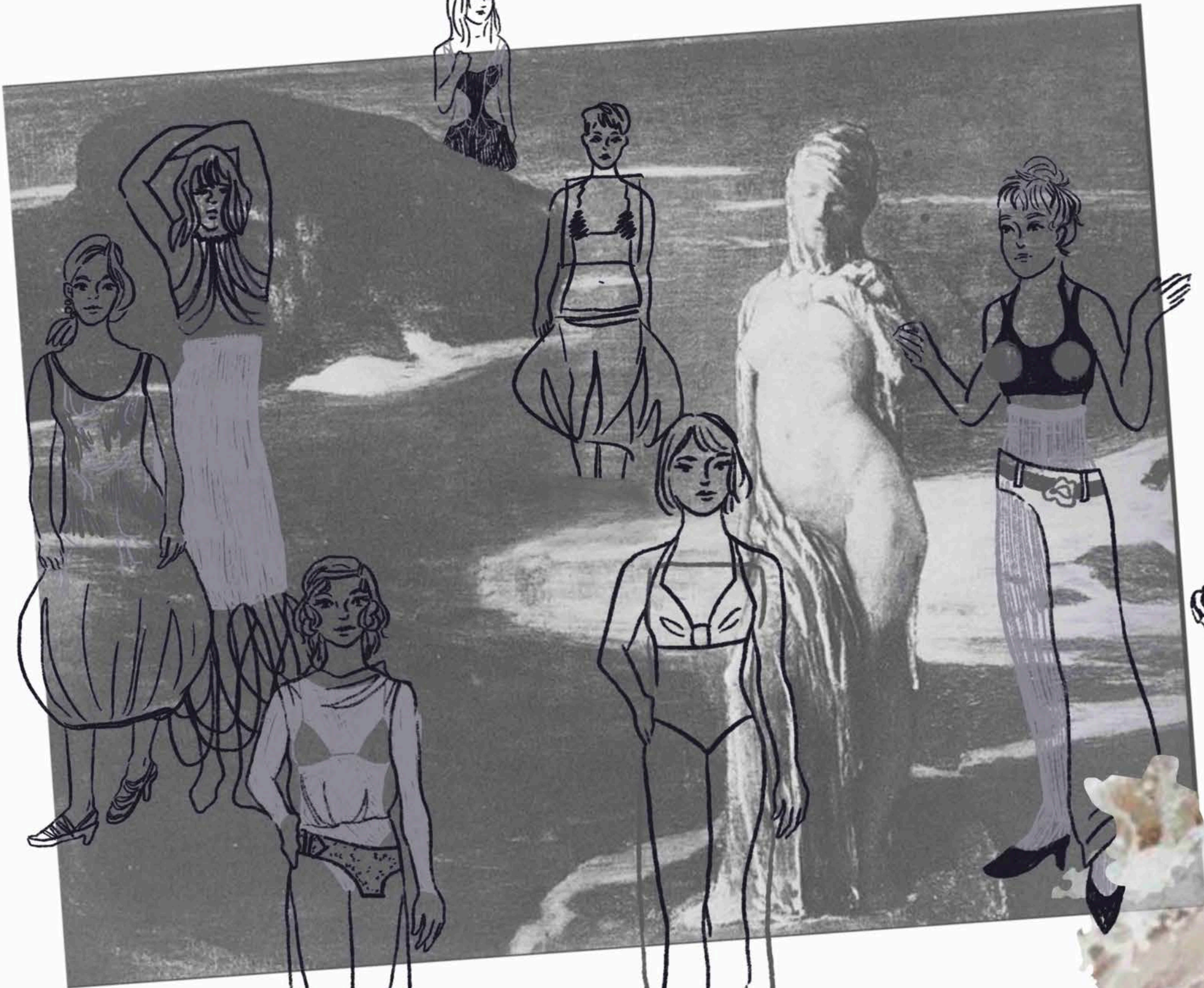
As a designer I am particularly interested in designing swimwear and underwear and merging it with luxury evening wear. For this collection I incorporated this idea and designed pieces that could be worn to the beach but also to award shows by creating classic and elegant looks with a playful twist.

I was also fascinated by the idea of what lies beneath the oceans surface and how that mirrors what lies beneath our clothing. For these reasons this collection is full of sheer fabrics, strange cutouts, different layered pieces and lots of metallics.



SALACIA

Evening Beach wear collection S/S26





For this look; 'Le Sirene', it began as tight sheer skirt with a flowy two tones dress tucked in with an oyster style bikini. The first thing to change was the colour of the dress, from black and white to two different shades of black.



The next thing that changes was the sheer sparkly skirt in to a pair of trousers and then into a pair of stretch mesh leggings with a 'v' waistband. The bikini also changes a lot from a oyster cup into a classic black triangle bikini that has an oyster shape embossed onto the left cup. The bikini is encased into the top of the dress and when it is tightened it affects the shape of the dress.



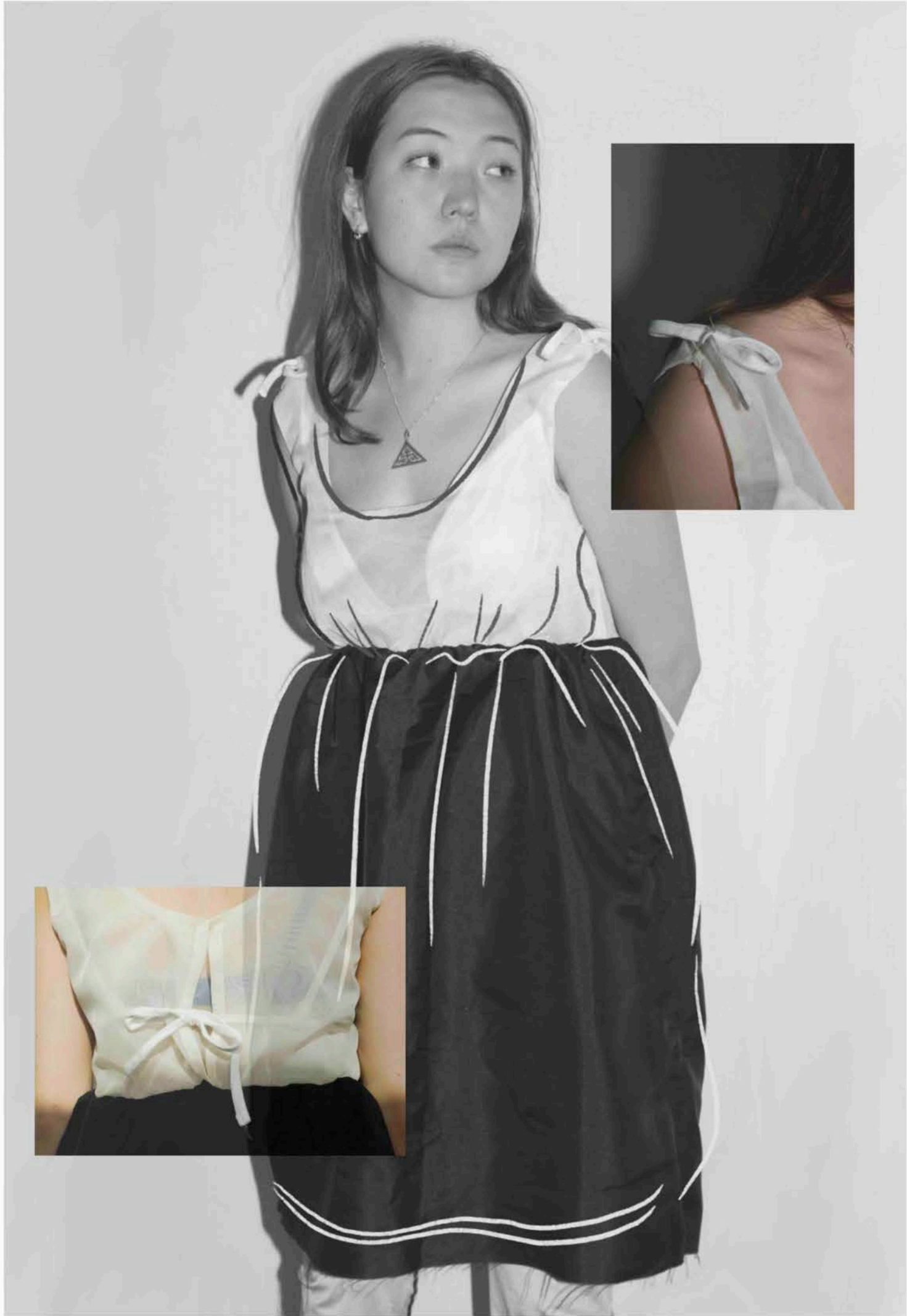




I made three toiles of the bodice, adjusting and re-adjusting the fit of the shoulders, back panels and shaping the front to the models chest.

The bikini bottoms were also toiled three times to make the fit around the crotch taught and unwrinkled.





There were two toiles for both the dress and the leggings.

The toiles helped me adjust the waist-band of the leggings and the fit of the top of the dress. I also adjusted the gathering of the dress and top.

The underwear was adjusted many times to get the perfect fit.





I made around five toiles to perfect the draping effect for 'Clio' dress. I also adjusted the shaping of the cut out.

The shorts also were re-made three times to adjust the crotch and gusset so it won't wrinkle.









Look Breakdown: Ran



1. Sheer white polyester, stretch metallic polyester elastane, black polyester stretch crepe fabric.
2. Front Bodice, worn over cage made from Polyester boning. 3. Back Bodice, worn over cage made from Polyester boning. 4. Sheer polyester skirt, Back. 5. Sheer polyester skirt, Front. 6. Metallic paneled bikini bottoms, Front. 7. Metallic paneled bikini bottoms, Back.

Construction process



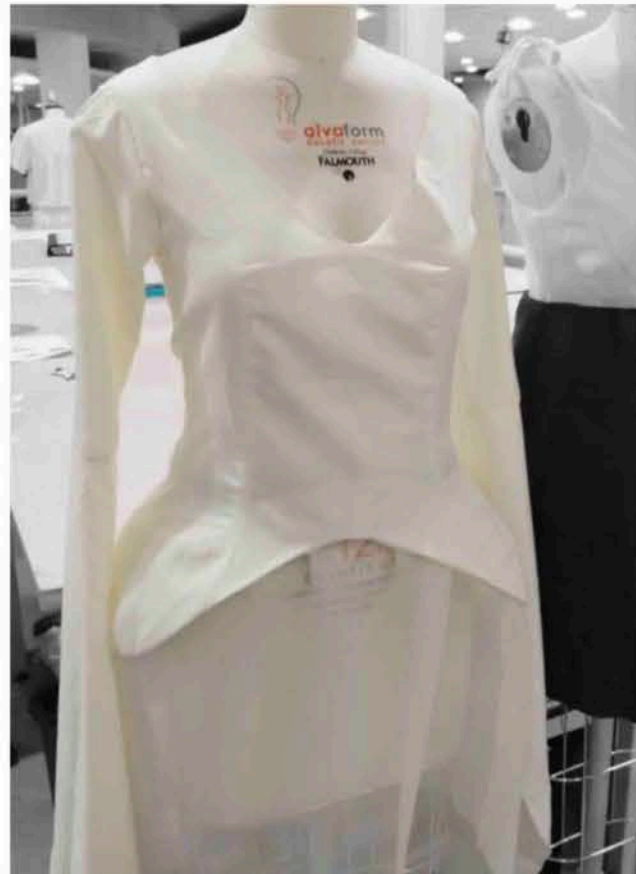
1. Create polyester boning cage to shape in the bodice.



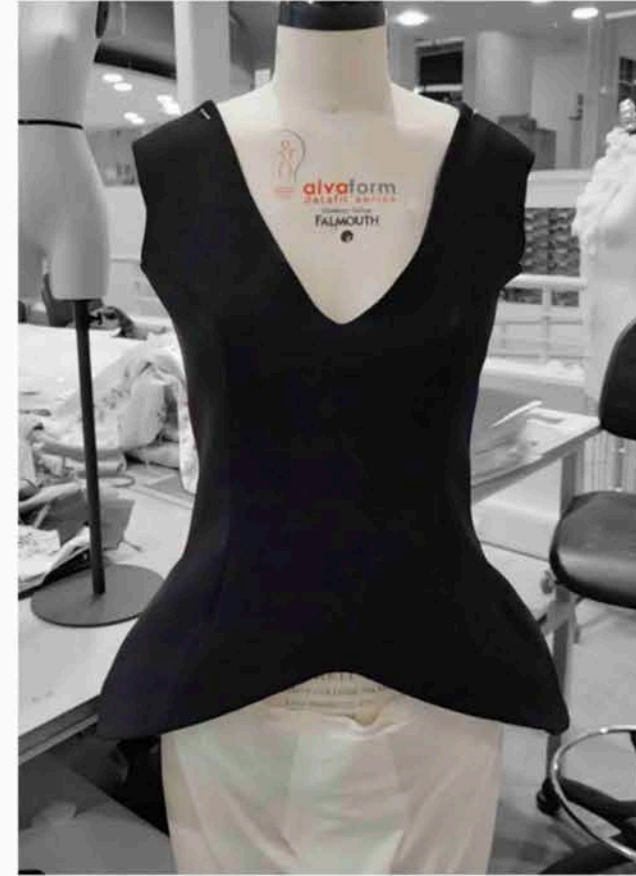
2. Form pattern with place holder fabric on top of the boning.



3. Create and cut out the pattern.



4. Create the first toile and make the appropriate adjustments to the pattern.



5. Create another bodice in the fabric according to the adjustments



After finishing the bodice cut out and sew the lining and attach it to the bodice.



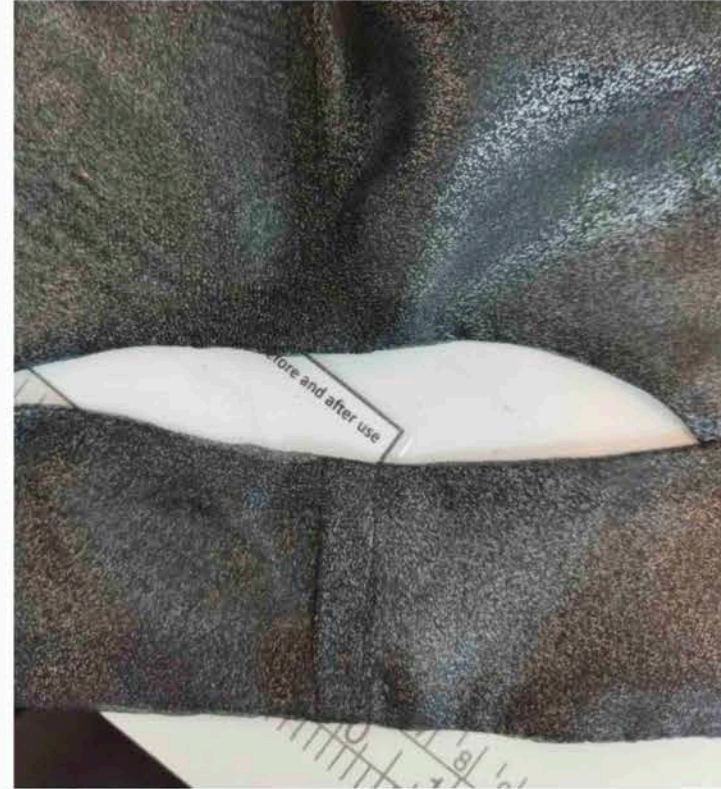
Look Breakdown: Le Sireenne



1. Sparkly stretch mesh polyester, black and silver polyester chiffon, black polyester satin fabric.
2. Front, dress with sheer top. 3. Back, dress with sheer top. 4. Triangle bikini with embossing, front.
5. Triangle bikini, Back. 6. sparkly stretch mesh leggings, Front. 7. sparkly stretch mesh leggings,
Front. 8. Black embossed bikini bottoms, Front. 9. Black embossed bikini bottoms, Back.



Construction process



1.

2.

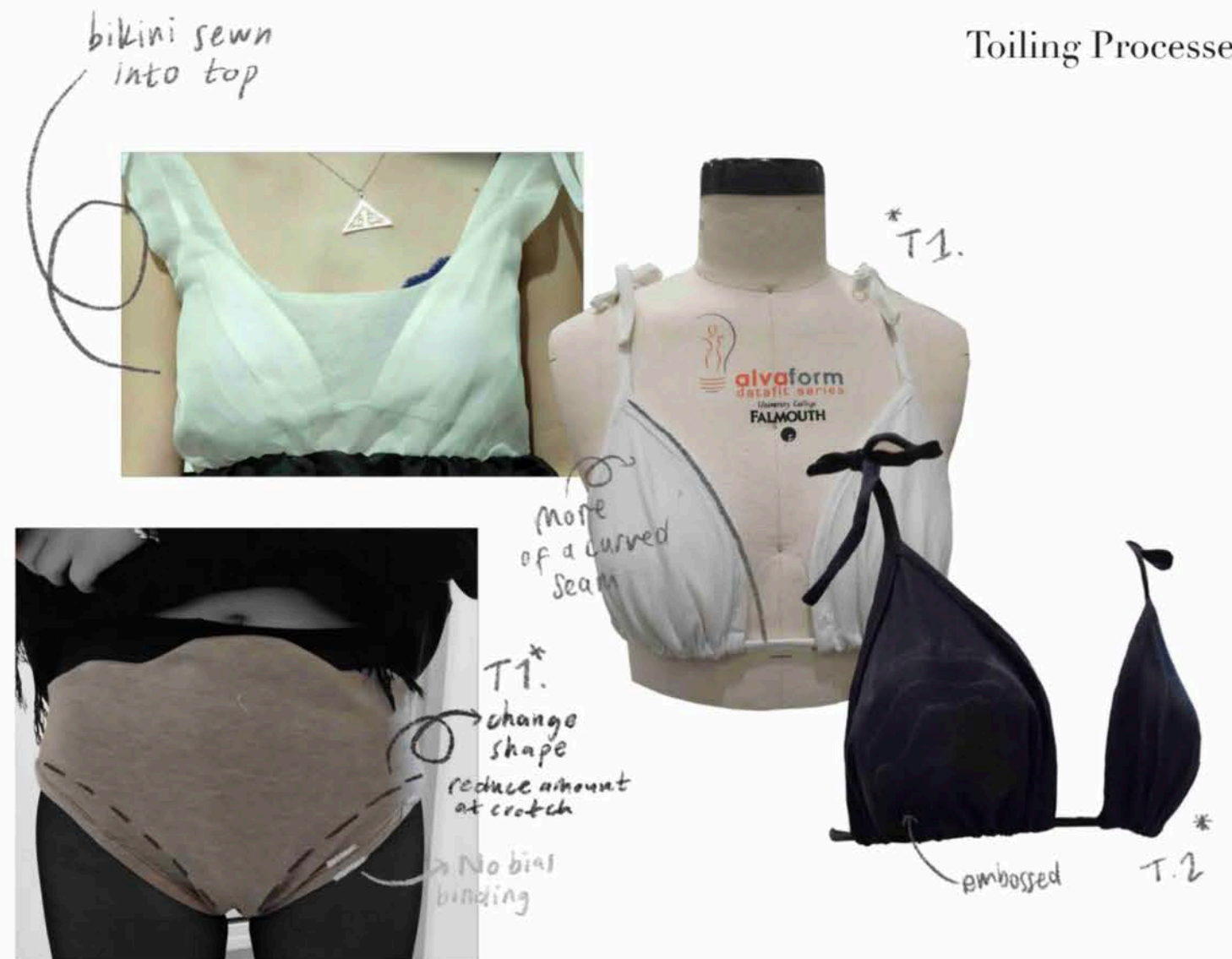


3.

4.

1. Toile one back view of bikini ties
2. Sewn openings on the straps of the dresses top
3. Dress with bikini inside sheer top and skirt tucked into underwear
4. Adjustments on toile one

Toiling Processes



Toiling process of the bikini. adjusting the shaping of the bikini bottoms was essential to the fit, along with adjusting the crotch to reduce the wrinkles. And changing the shaping of the bikini to fit the embossed oyster.





1. Black scooped dress, Front. 2. Black scooped dress, Back. 3. Two toned, black and silver, bikini shorts, Front. 4. Two toned, black and silver, bikini shorts, Back. 5. Metallic foil spandex, heavy black polyester satin fabric

Construction Processes

The construction process of creating the scooped 'Clio' dress began with making various half scale versions and changing the different ways to pattern cut the dress. After this step I made the pattern and toile using the actual sizes. Adjusting the various shapes of the skirt to create the perfect volume.

For the shorts I used the flat bed machine to create the two toned shape, and the rubber 3 thread overlocker for the waistband.



3THREAD OVERLOCK
TURNED OVER TS

SAMPLES FOR SHORTS



HALF SCALE DRAWSTRING SAMPLE CLIODNA DRESS

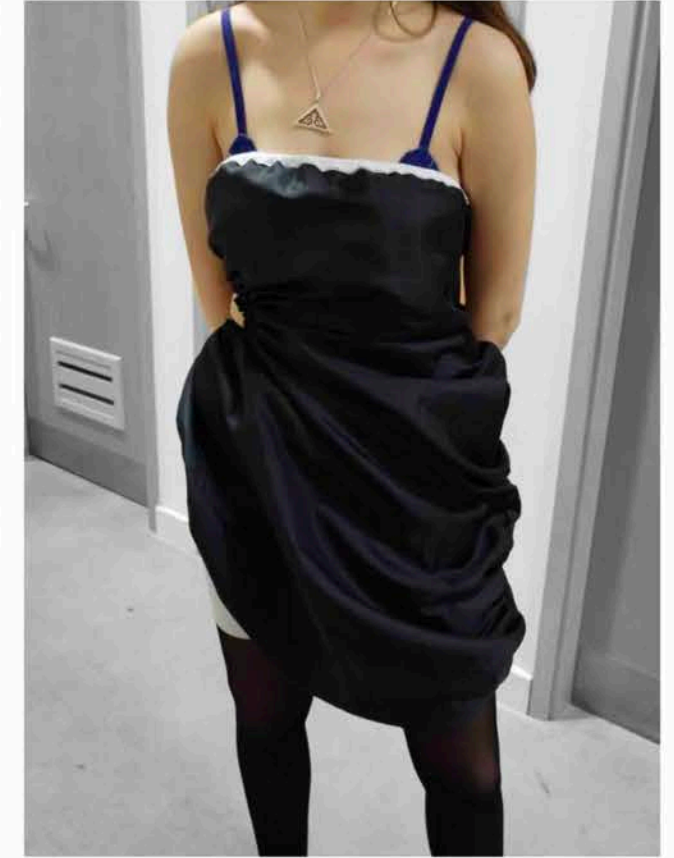


Construction Process

1. Toile one, not enough volume at the front.



2. Toile two, slightly more volume, but the neckline needs to be tighter.



3. Back view of toile two.



4. Last toile, with the needed volume.

Look Breakdown: Agwe



1. Two toned, black and white dress, Front. 2. Two toned, black and white dress, Back. 3. Patterned stretch bikini bottoms, Front. 4. Patterned stretch bikini bottoms, Back. 5. Pearlescent poly-satin, sea imagery pattern.



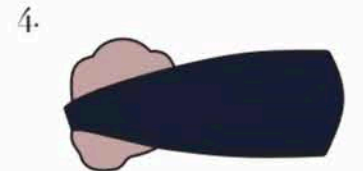
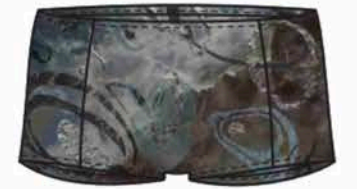
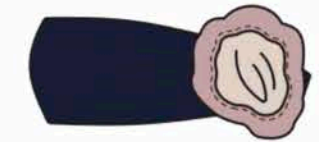
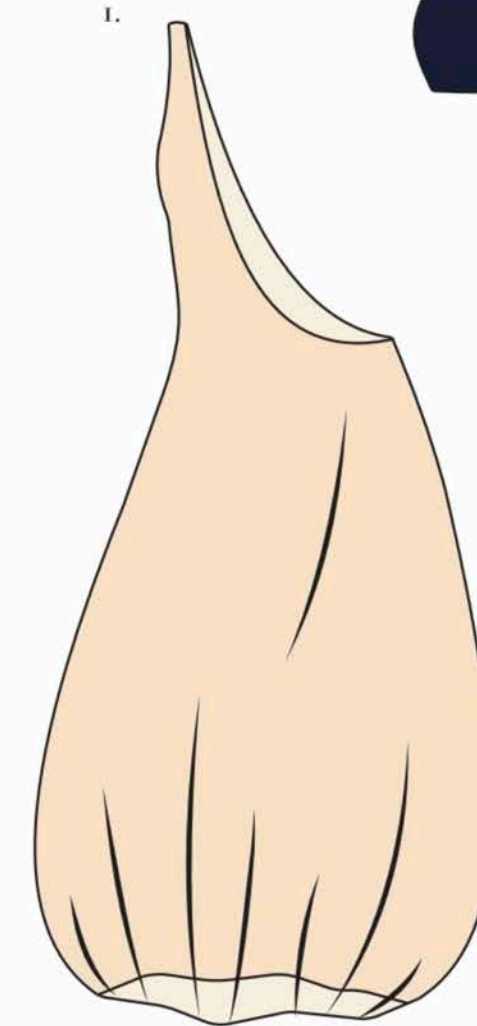
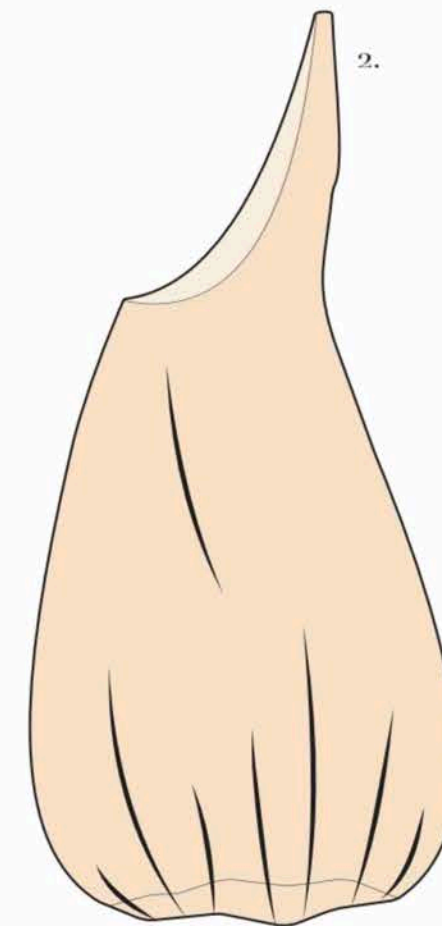
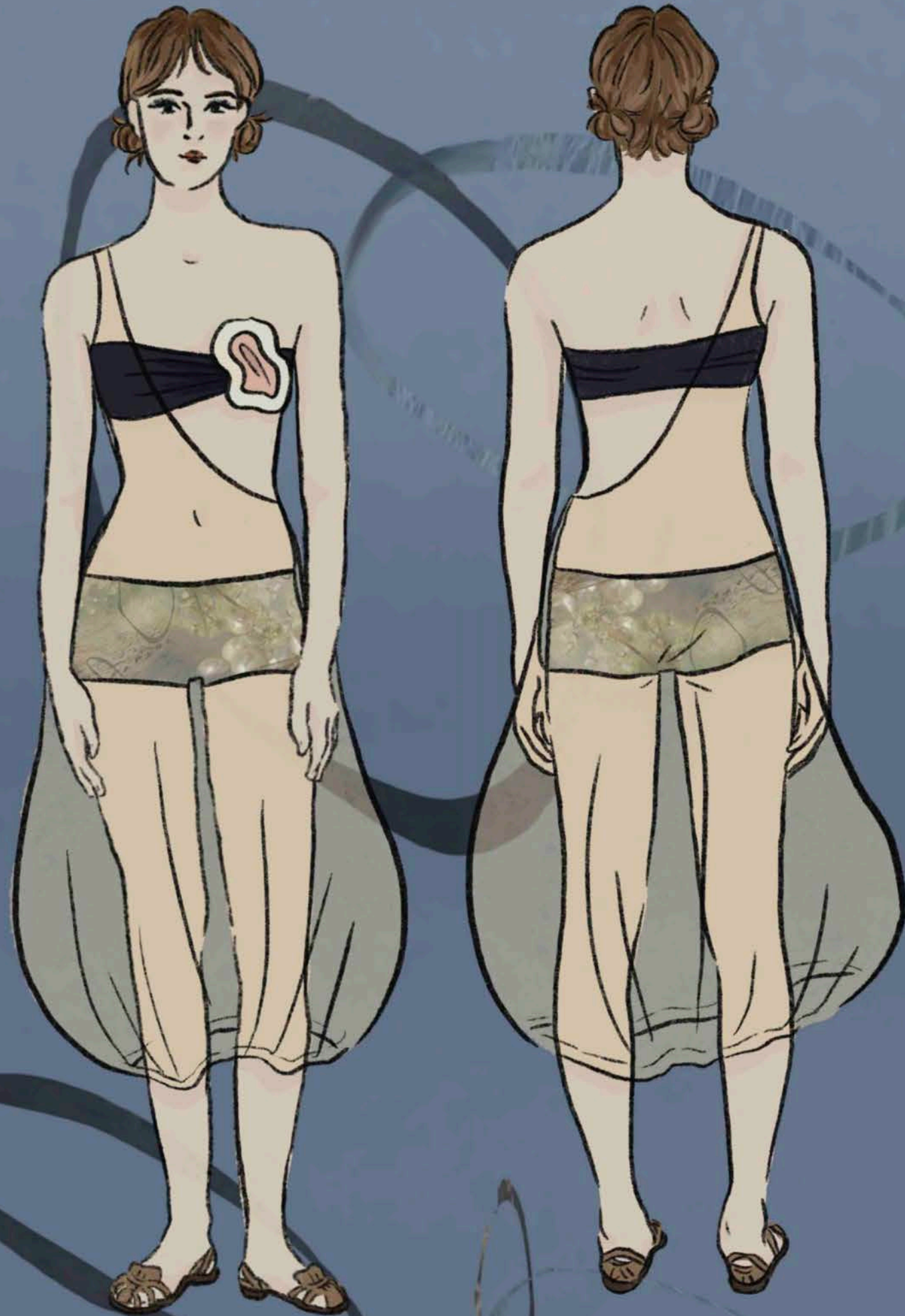
1. Bikini top with pearl beads attached, Front. 2. Bikini top with pearl beads attached, Back. 3. White cotton skirt with silver hem, Front. 4. White cotton skirt with silver hem, Back. 5. Stretch dark grey sheer skirt, Front. 6. Stretch dark grey sheer skirt, Back. 7. white, peach, dark grey fabric swatches.

Look Breakdown: Onos



1. White, silver, black fabric swatches. 2. White dress with shell cutout, Front. 3. White dress with shell cutout, Back. 4. Sheer black patterned dress, Front. 5. Sheer black patterned dress, Back. 6. Grey, silver bikini bottoms, Front. 7. Grey, silver bikini bottoms, Back.

Look Breakdown: Belisama



1. Asymetric sheer ballon dress, Front. 2. Asymetric sheer ballon dress, Back. 3. Strapless bikini top with oyster appliqué, Front. 4. Strapless bikini top with oyster appliqué, Back. 5. Panned patterned shorts, Front. 6. Panned patterned shorts, Back. 7. Blue and peach swatches, sea imagery pattern.

Look Breakdown: Dynamene

2.



7.



3.



1.



4.



5.



6.



1. White sheer, pink, black and dark grey fabric swatches. 2. Zero waist sheer blue jacket, Front. 3. Zero waist sheer blue jacket, Back. 4. Black bikini top with two shell appliques, Front. 5. Black bikini top with two shell appliques, Back. 6. Balloon puffy skirt, Front. 6. Balloon puffy skirt, Back.

