



Mx GRRRL is a gender neutral collection celebrating and empowering women, Trans and Non-Binary people within the feminist community. With a focus on collaboration and the DIY aesthetic, Eli Heijink addresses a range of social issues personal to him. As a Transgender man, Heijink has used this collection to communicate his relationship with feminism; initial inspiration behind the focus on the Riot Grrrl and Punk movements, stemmed from Heijink's previous experience discovering his identity, reflecting on these movements as an emotional outlet.

With the Riot Grrrl movement becoming a female form of the Punk subculture, a new outlet of self-expression came to light. Whilst playing a vital role in creating a safe space for minorities to explore their identity, the DIY ethos is at the core of the movement, allowing people to "use clothes to shock, irritate and provoke a reaction but also inspire change."

- Viv Albertine recalling Vivienne Westwood and Malcolm McLaren's shop 'SEX'

The materials used to create Mx GRRRL feature a vast range of deadstock fabrics including wool, denim, woven cottons, cashmere selvedge trims, and scrap leather. Heijink's use of deadstock materials reference the DIY ethos, pioneering sustainability within the current climate crisis. Design features include exposed frayed seams, large metal eyelets combined with oversized safety pins, abstract draped shapes and cyanotype prints. With blue being a primary colour within the collection, seen within the bleached denim and blue tartan; cyanotype printing has been used to create the raw, homemade look with the deeper shades of Prussian blue. Prints produced by Heijink include the layering of a childhood photo, with a large scale collage created using paints, charcoal and magazine cut outs.

Whilst Mx GRRRL as a collection strives to push the conversation of the social issues personal to Heijink through a creative outlet, collaboration is also an important outcome of Mx GRRRL as a whole project. Mx GRRRL has taken many forms during its course, not only as a collection but also as a collaborative event. Whilst celebrating and empowering women, Trans and Non-Binary people within the feminist community, Mx GRRRL was a night of LGBTQ+ creatives coming together to feature not only the release of the collection, but to also promote Non-Binary Punk bands from Leeds. Providing enough space to have fun, feel safe and express yourself to the highest level.



POSTER ZINE COLLABORATION WITH
GRAPHIC DESIGNER ELANNA BARRET

MX GRRRL EVENT



KATHLEEN HANNA



CHILDHOOD PHOTO OF HEIJINK



MX
GRRRL

eli heijink
concept



SEX BOUTIQUE 1974-76



MALCOLM MCLAREN & VIVIENNE WESTWOOD 1971



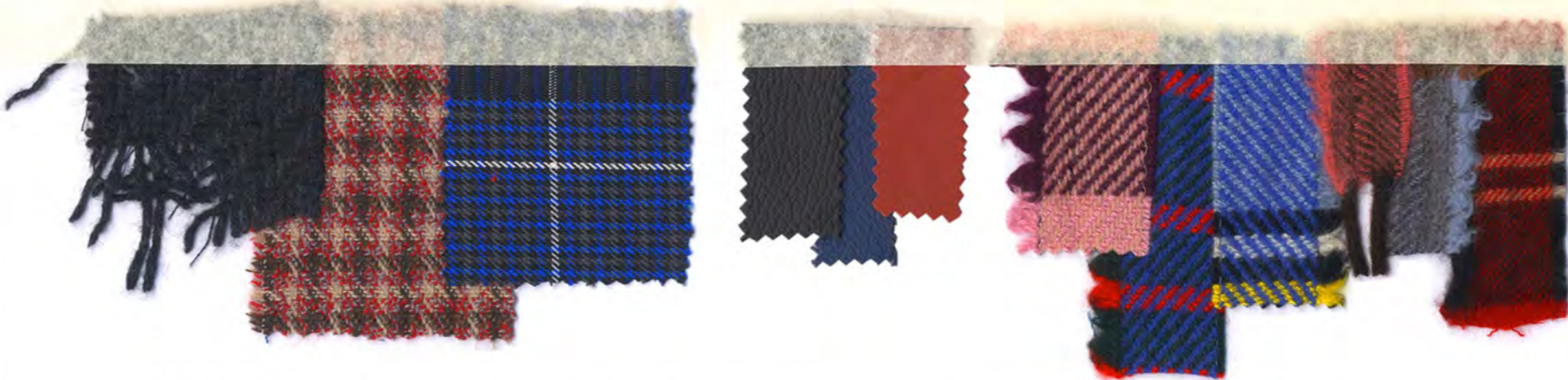
WOVEN WOOL

WOOL BLEND

COTTON BLEND

LEATHER

CASHMERE SELVEDGE TRIMS



BLEACHED DENIM

CYANOTYPE COTTON

CYANOTYPE COTTON & VISCOSE BASKET WEAVE

LAYERED COTTON BLEND AND PINSTRIPE



COTTON VOILE



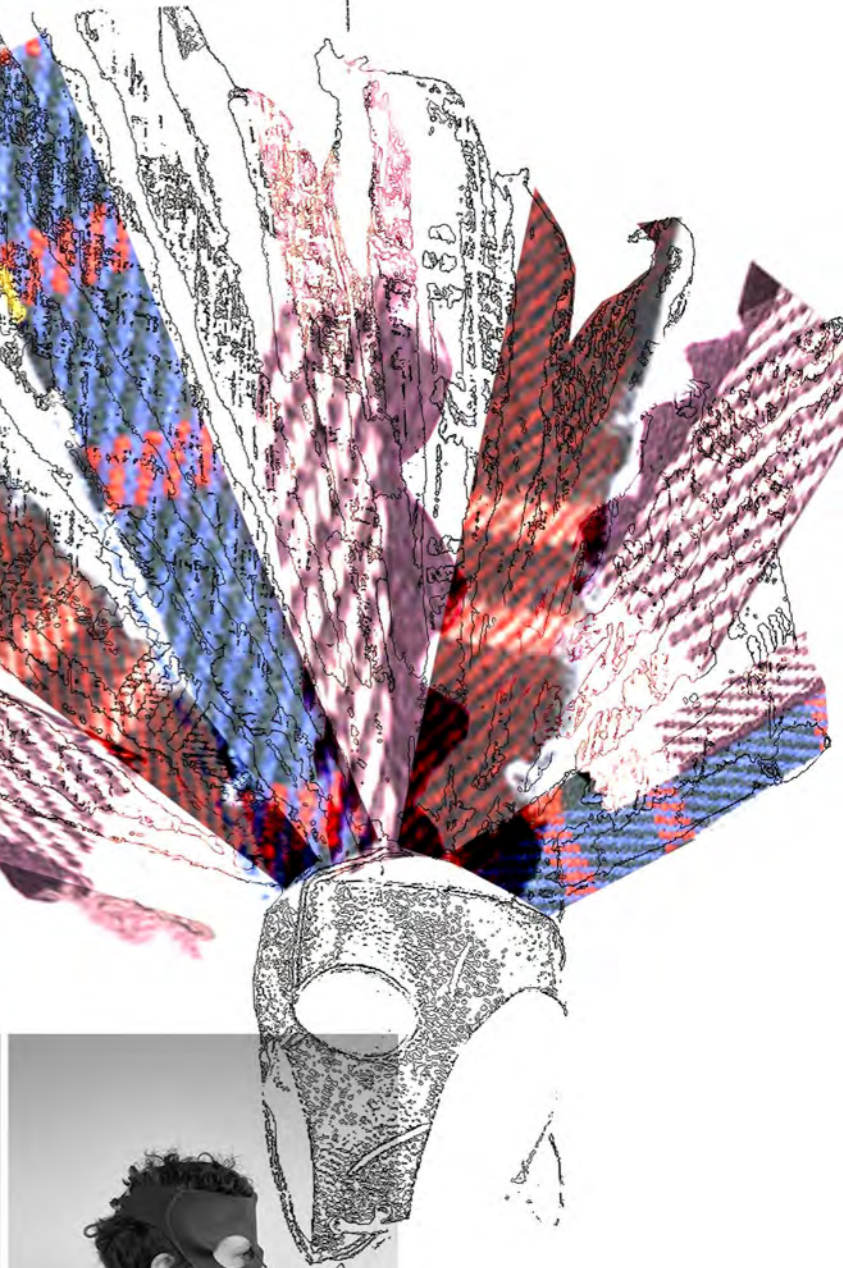
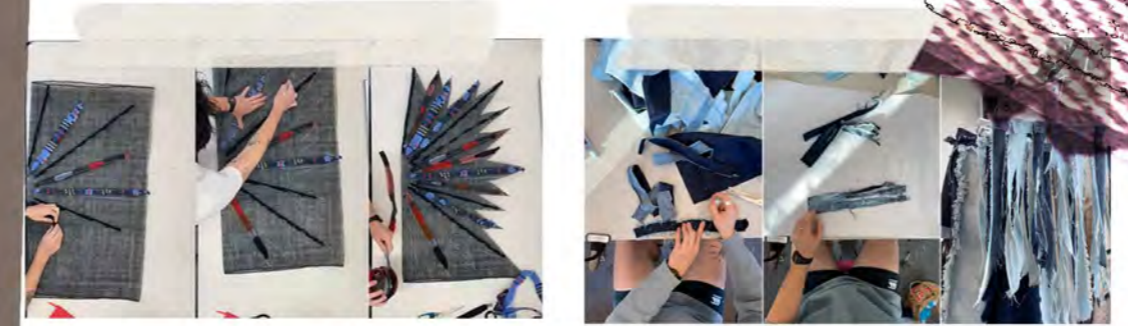
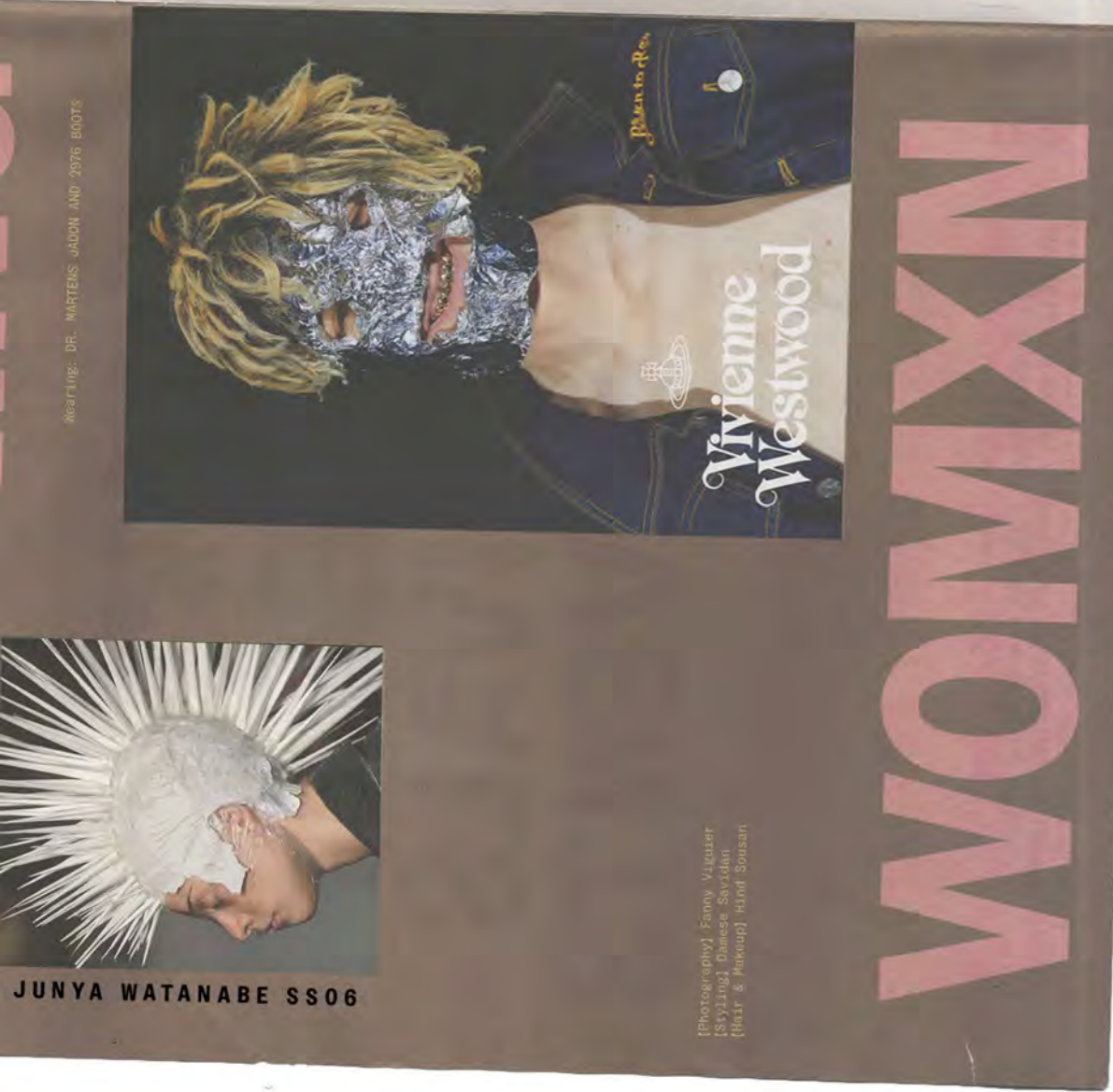
KILT PIN

**Mx
GRRRL**

eli heijink
colour & fabric



**Mx
GRRRL**
eli heijink
silhouette & detail



MX GRRRL

eli heijink
accessories development



MX
GRRRL

eli heijink
print development

CASHMERE SELVEDGE TRIMS

LEATHER



**MX
GRRRL**

eli heijink
accessories development

COLLAGE OF CYANOTYPE
PRINTED DRAPED JACKET



DRAPING IDEAS GENERATION
THROUGH 2D FABRIC MANIPULATION



DRAPING THE FINAL GARMENT



**MX
GRRRL**

eli heijink
draping development



IDEA GENERATING FOR
COLLAGE/DIY STYLE TAILORING



DESIGN FOR 3D LAPEL



TaI**L**OR**I**NG



**MX
GRRRL**

eli heijink
tailoring development



MX
GRRRL

eli heijink
accessories development



MX
GRRRL
eli heijink
tech flats



MX
GRRRL

eli heijink
lineup

SHOW NIGHT

SHEAF ST:
 - MON - WED FROM £150
 - THURS OR SUNDAY £250

EXTENDED HOURS AVAILABLE
 - 100% TICKET SALES GO TO YOU
 - GIG/STAGE STANDING CAPACITY = 20

EXTRAS:
 - ADDITIONAL SET UP TIME PRE (100 PH)
 - GREEN ROOM FOR PERFORMERS (£75 PH)
 - ONE OFF FEE FOR LIVE BANDS (£50)

DIE TWINERS
 * ACCESSORIES → VEHICLE SHOES
 PRINT LEATHER

CATWALK + BANDS PLAYING
 - END OF APRIL
 - BANDS:
 - DRAGS
 - CRUSH
 - MOTHER SYD
 - CASTING FOR BANDS - FROM ALL OTHER COSTS + TICKET SALES
 - POTENTIAL OTHER VENUE → LEFT BANK
 - CONSIDER A VENUE WITH PROJECTIONS → SNIPPETS OF INTERVIEWS
 - 2 BANDS FOR THE NIGHT

VENUES:
 - LEFT BANK
 - WHARF CHAMBERS
 - THE WORKROBE

1st NYE
 - £11 WHARF CHAMBERS
 - 5 - 11:30

START NIGHT @ 7 DOORS OPEN
 - 7:30 1st GIG (1 HOUR)
 - 8:30 - 9 INTERVAL
 - 9 - 9:30 CATWALK
 - 9:30 - 10 INTERVAL
 - 10 - 11 2ND GIG (1 HOUR)

POSTERS MADE AS A COLLABORATION WITH GRAPHIC DESIGNER ELANNA BARRET



SNAPSHOTS FROM VIDEO MADE IN COLLABORATION WITH FILM STUDENT LAUREN



MX GRRRL
 eli heijink
 event planning



'REMAINS A JEWEL'
CONTINUALLY RAISING THE BAR."



GET YOUR TICKETS NOW!
FESTIVAL - HCR 31.41-13.8.2023



+ MANY MORE



MX
GRRRL



eli heijink
event photos