

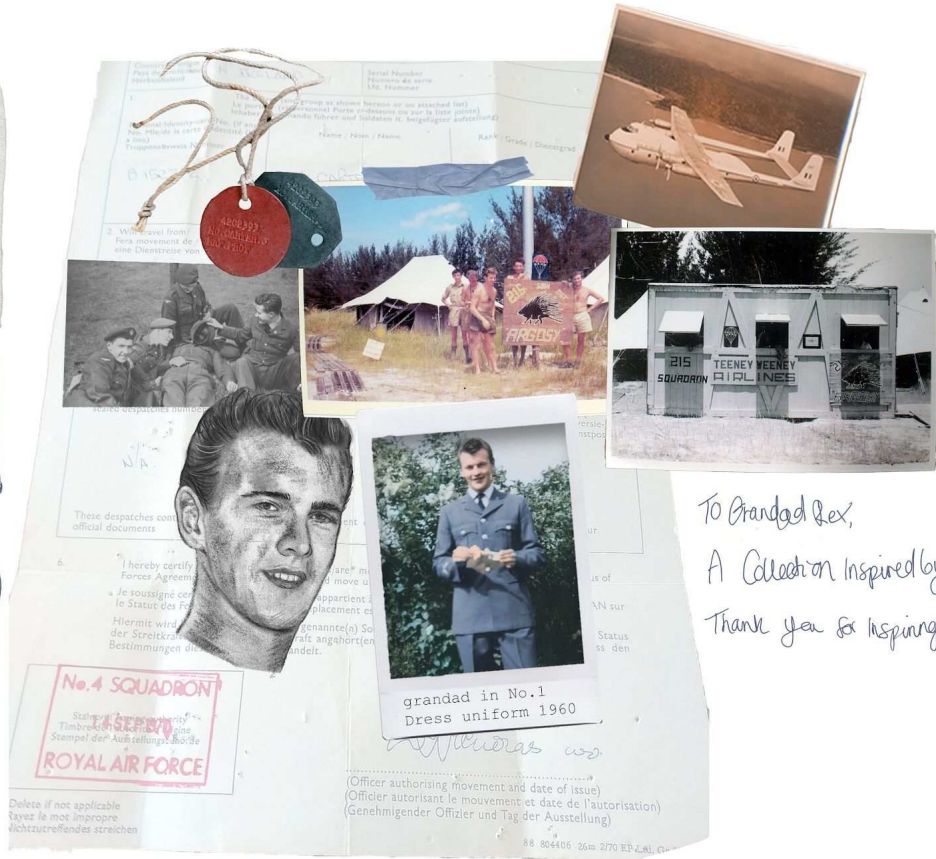
TAILORED TRAVEL. GRACIE CLARKE

This collection is inspired by my Grandfather's time in the Royal Air Force from 1960 to 1972. My Grandfather has been one of the biggest inspirations in my life and I wanted to devote my collection to him to honour his service.

The concept is to apply traditional tailoring techniques and silhouettes from uniform and combine this with garments seen on his travels to locations such as Singapore, Madagascar, Northern Ireland and Borneo. To create something contemporary yet very personal. Considering the culture of traditional attire/ dress from these locations allows for a collection that takes you on a journey, the way my grandfather would have done.

I wanted to provide a unique insight into my Grandfather's travels and the variety of garments from the countries he was stationed - To redefine what is expected in tailoring.





To Grandad Rex,
 A Collection inspired by your travels.
 Thank you for inspiring me,
 Gracie x

TAILORED TRAVEL.
 GRACIE CLARKE GRADUATE COLLECTION '24
 CONCEPT



DETAILS



TAILORED TRAVEL.

GRACIE CLARKE GRADUATE COLLECTION '24

COLOUR & FABRIC

LEAFLET BY GRANDFATHER
WAS GIVEN IN SINGAPORE



COLOUR & FABRIC DEVELOPMENT

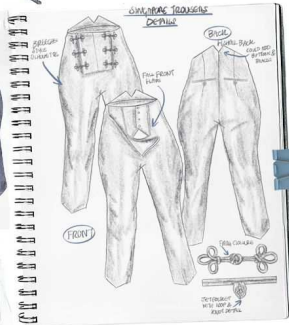
SINGAPORE JACKET
DETAILS



developing initial 4
pieces



SINGAPORE TROUSERS
DETAILS



developing ideas on toile



Print some toile to
develop silhouette

TAILORED TRAVEL.

GRACIE CLARKE GRADUATE COLLECTION '24

OUTFIT 1: DEVELOPMENT



CYANTYPE PRINT DEVELOPMENTS OF
BY GRANDFATHERS LINDEN PRINT FROM
MAMA JANGKA



Five-Button, draped
off-shoulder
sleeves

ZERO WASTE WRAP TROUSERS
EQUATION BELOW



SKETCHING SILHOUETTE



LENGTH 92cm
 $92 \text{cm} \text{ (WIDTH)} \times \frac{1}{2} \text{ (HEAD)} = 57 \text{cm}$
 $\frac{92 \text{cm}}{4} \text{ (HIP)} + 7 = 32$



DRAPING IDEAS



FRONT

SIDE

BACK

SIDE

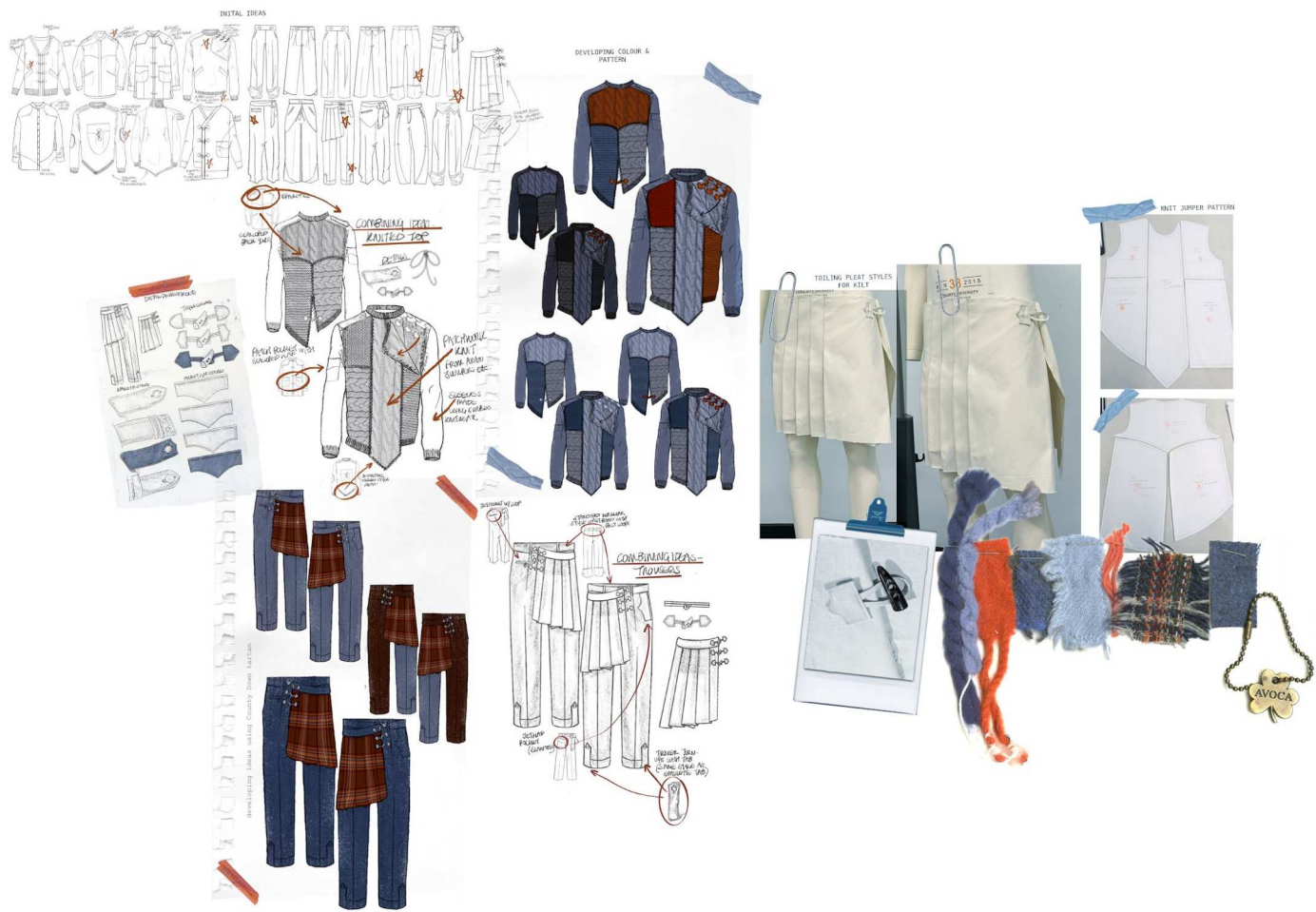
SIDE

FRONT (with name)

TAILORED TRAVEL.

GRACIE CLARKE GRADUATE COLLECTION '24

OUTFIT 2: DEVELOPMENT



TAILORED TRAVEL.

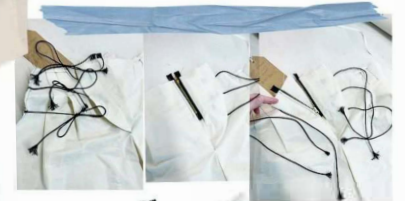
GRACIE CLARKE GRADUATE COLLECTION '24

OUTFIT 3: DEVELOPMENT

INITIAL IDEAS



GAMBINO PHOTOGRAPHED IN BIRNIE, 1964

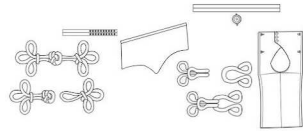
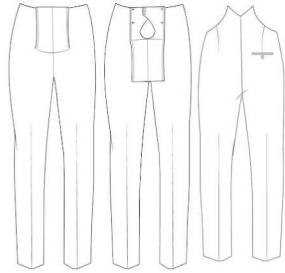
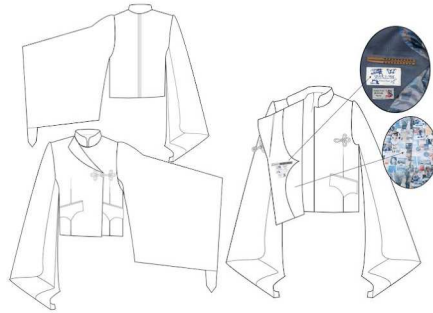


DRAPIRING & PINSING FABRICS
ADDING CIND COLORE &
SLANT FLY

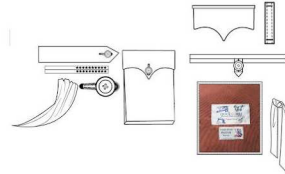
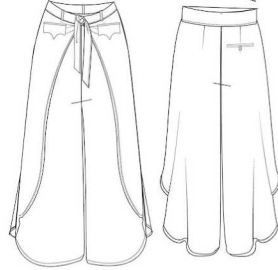


TAILORED TRAVEL.
GRACIE CLARKE GRADUATE COLLECTION '24
OUTFIT 4: DEVELOPMENT

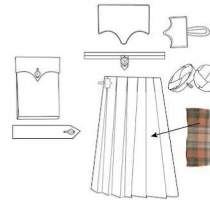
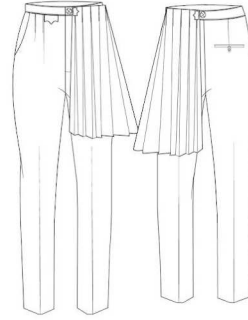
OUTFIT 1



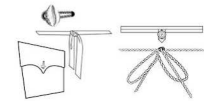
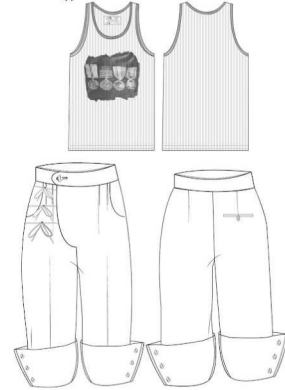
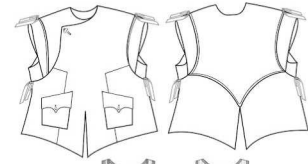
OUTFIT 2



OUTFIT 3



OUTFIT 4



DETAILS

TAILORED TRAVEL.

GRACIE CLARKE GRADUATE COLLECTION '24

CAD TECH PACK



MODELS
(LEFT TO RIGHT)
NAV
VALENTINO
TAYSHAN
BEN



TAILORED TRAVEL.
GRACIE CLARKE GRADUATE COLLECTION '24
FASHION PHOTOGRAPHY COLLABORATION
SHOT BY EMILLY OBENG

OUTFIT 1



OUTFIT 2



OUTFIT 3



OUTFIT 4



TAILORED TRAVEL.

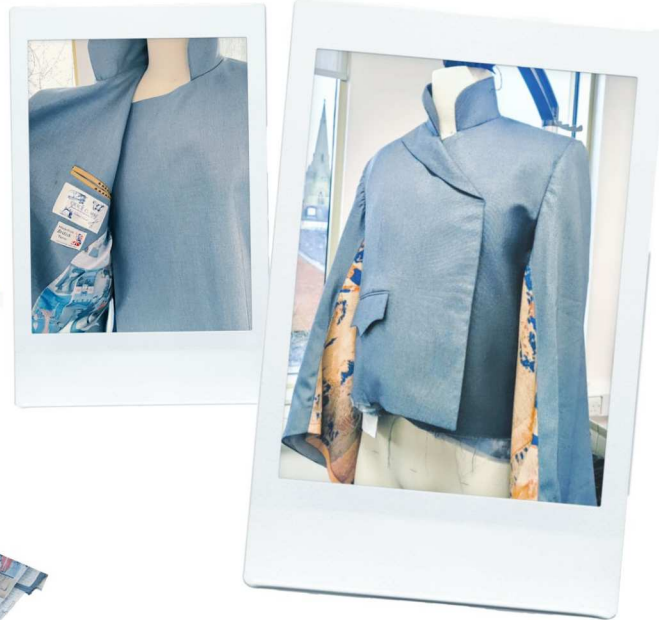
GRACIE CLARKE GRADUATE COLLECTION '24

FASHION PHOTOGRAPHY COLLABORATION DETAILS
SHOT BY EMILLY OBENG

TAILORED TRAVEL.
CREATIVE PROCESS PORTFOLIO
MAKING OF OUTFIT 1 JACKET



Magnet with small pocket to insert into the sleeve



The material in this jacket was also a cashmere and wool blend, which was great to work with for this jacket. I began by cutting and fusing the pieces, and using those to cut the lining of the jacket.

I tried to use as many traditional tailoring techniques as I had learned at my time at Morgan & Fenwick Tailors.

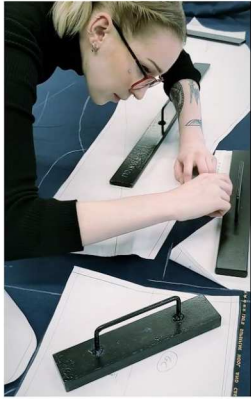
I did all pockets first, and then connected the base of the jacket, after that I shaped the facing and added the dart where the collar would be inserted. Then adding the sleeves into the jacket along with the shoulder pads and sleeve head rolls.

Finally I inserted the lining, which I had to slightly alter on the sleeves as the kimono shape made the lining peak through, next step - frog closures and the magnet to allow the sleeve to wrap

TAILORED TRAVEL.

CREATIVE PROCESS PORTFOLIO

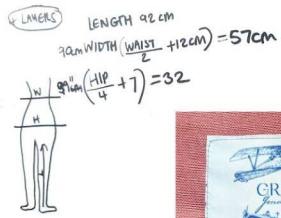
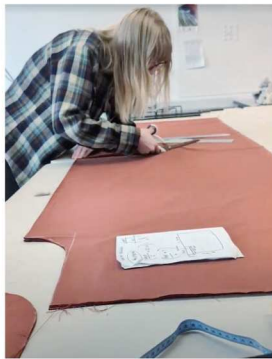
OUTFIT 1 MAKING OF FALL FRONT TROUSERS



The construction of these trousers was fairly simple as I had already made 2 toiles, the fabric was a wool and cashmere blend which made it excellent to work with.

The only part I found slightly challenging was making sure the selvedge design detail was symmetrical on the fall front.

I used the chainstitch machine on the inside leg and centre back of the trousers to allow for any stretch. I also used the blind hem machine to really give the trousers that sharp finish. The crossover section of the flap was finished with 3 buttons, and the flap with 2 hook and eye closures on each side.



TAILORED TRAVEL.

CREATIVE PROCESS PORTFOLIO

OUTFIT 2 WRAP TROUSERS

Zero waste wrap trousers created by using pattern equation (see top left). This pattern is great as it is very transformative and versatile, as the trousers open up I used bias binding to bind all edges and 'Hong Kong' finish all seams.

I used embroidery on my home sewing machine in a contrast stitch along the hem as a design feature to coordinate with the jacket.



wrap trousers laid flat



weave repair I had to do by hand due to a faulty sewing machine.



TAILORED TRAVEL.
CREATIVE PROCESS PORTFOLIO
MAKING OF OUTFIT 2 JACKET

This jacket began by ripping down my toile and using the pieces directly onto the fabric to cut from there.

I used a similar construction as I did in the outfit 1 jacket - fusing, basting, etc.

The cargo pockets are fully lined and were sewn onto the jacket by hand.

The collar was made using the method from my time at Morgan & Fenwick Bespoke tailors.

The jacket was initially going to have traditional tailored sleeves, however I decided to do some draping on the mannequin to create this cap style sleeve.



TAILORED TRAVEL.

CREATIVE PROCESS PORTFOLIO OUTFIT 4 SHORTS TOILE & MAKING

Began by using outfit 3 trouser toile to experiment with length & turnup of the shorts.

Used the same pattern for the base and altered the front panel to create a slant fly.

Inserted cord into fly and side seam as a tie closure. As I used linen I only fused the waistband, fly and jets of the shorts.

As a closure for the turnups I added cowrie shells as buttons (sourced from Borneo)

