

Craig Green
A/W 17



OLD FAMILY PHOTOS



Issey Miyako



An Ode To Ageing

Drawing inspiration from Japanese philosophies of Wabi Sabi and Boro Boro, the collection explores how we can celebrate age and second-hand materials as a way of creating a slower, more circular industry.

CONCEPT

WABI - SABI

[A CONCEPT]

The Japanese art of finding beauty within the imperfections of life and accepting the natural cycle of growth and decay. Celebrating cracks, crevices, and all other marks that time, weather and love leave behind.



Deadstock

LOCALLY AND SUSTAINABLY SOURCED

vintage interiors



Scraps Leeds



Charity shop



donated



photo by Pablo di Prima



second-hand original quilted fabric

COLOUR AND FABRIC

All materials were sustainably and locally sourced in Yorkshire. Many were found at Scraps Leeds, a sustainable business that salvages discarded materials, as well as car boot sales, charity shops and donations from family.



An Ode To Aging

OUTFIT 001 trouser development

Trousers by
Yohji Yamamoto

Kano Textiles



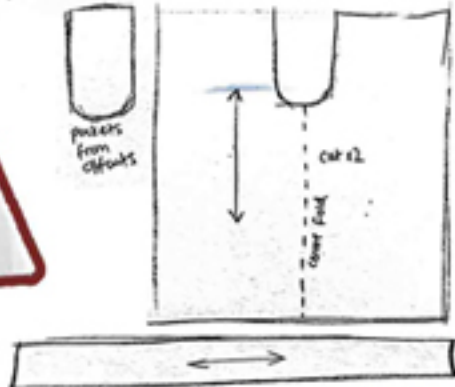
binding down leg

simplify waistband



FINAL TOILE

adjustable waistband
with buttons



zero waste pattern



design that uses the most scrap
material

An Ode
To Aging

herringbone stitch sample



experimental silhouette



initial sketches



crochet vest layered under coat



fabric choices for coat



OUTFIT 001 COAT DEVELOPMENT

An Ode
To Aging

starting with
paper
folding



1/2 scale experimentation



first toile

final toile



collaging fabric combinations



OUTFIT 002

jacket development



An Ode
To Aging

OUTFIT 002 trouser development

First toile



starting with paper folding

initial sketches



fabric combination



hidden pocket in the front left seam



FINAL TOILE



money buttons to hold the flap covering the zip

3D development



An Ode
To Aging

Bei Erweiterte
Common De Course
L/W1182

Henry Winkler 1988



includes more stitching detail



final toile



OUTFIT 003



fabrics choices
distressed and bleached denim
- shows age



inspiration
for silhouette



crochet crop trousers
with erigami top



matching crochet
balaclava
with crop
trousers

OUTFIT 004



An Ode
To Aging

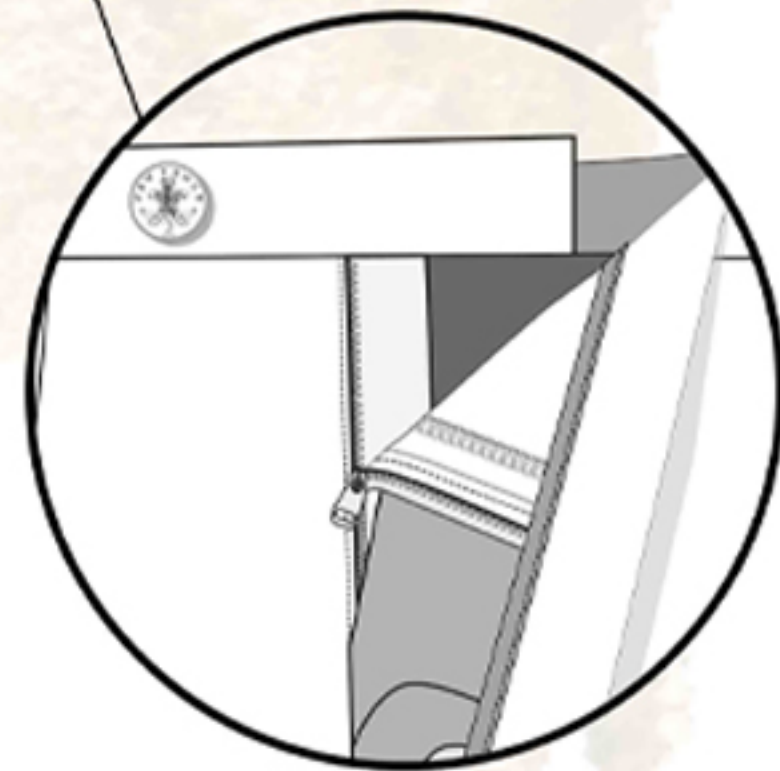
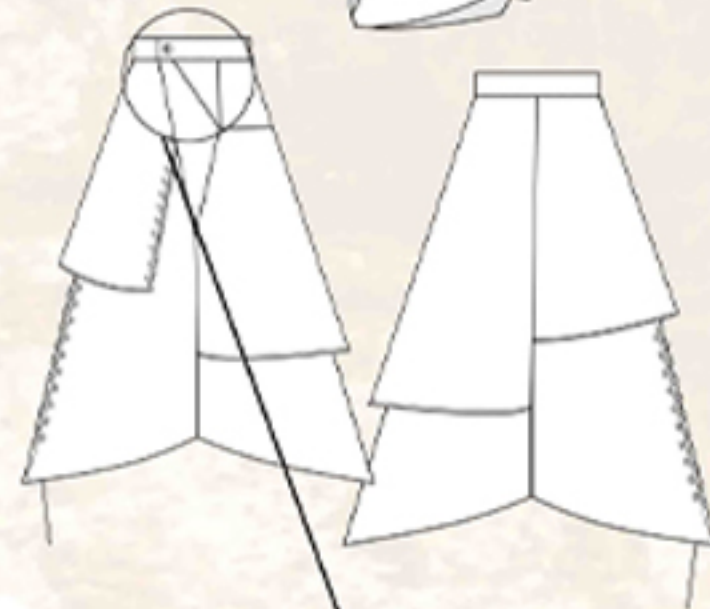
An Ode To Aging



OUTFIT 001

Range Plan

OUTFIT 002



An Ode
To Aging

OUTFIT 003

Range Plan

OUTFIT 004



An Ode
To Aging



WINNER of the LAU X Clothsurgeon live brief 2024

clothsurgeon[®]

40 SAVILE ROW, LONDON, W1

CONCEPT

INSPIRED BY MY FAMILY HISTORY AND LOVE OF THE OUTDOORS,
THIS PROJECT AIMS TO DECONSTRUCT THE TRADITIONAL
IDEA OF COUNTRYWEAR AND JUXTAPOSE
VINTAGE COUNTRY TWEEDS WITH CONTEMPORARY MENSWEAR.

MY APPROACH IS TO TREASURE WHAT WE
ALREADY HAVE THROUGH VISIBLY MENDING ITEMS AND
REWORKING OLD GARMENTS.

great grandad
gamekeeping
1930's

the
TWEED RUN
London

10 APRIL 2010
WWW.TWEEDRUN.COM

STITCH IN THE PAST

40 SAVILE ROW, LONDON, W1

Brother shooting in Cirencester 2022



clothsurgeon®
40 SAVILE ROW, LONDON, W1

DETAIL

Deconstructed garments

Experimental vents panels and exposing the inside on the outside

Visible repair
- sashiko stitching
- patching

vintage
countrywear
pockets

images from Vintage menswear:
a collection from
the vintage showroom.

Vintage hunting jacket



clothsurgeon®

40 SAVILE ROW, LONDON, W1

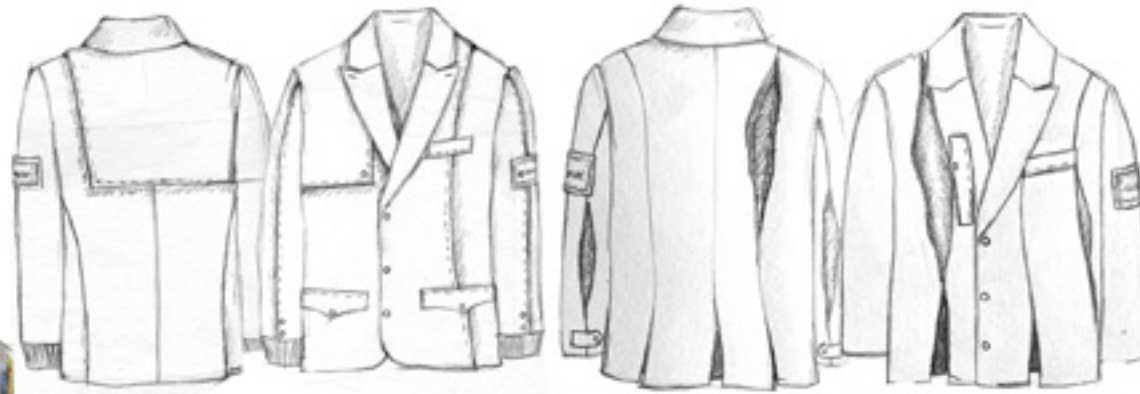
CUSTOMER



THIS COLLECTION TARGETS MEN OF ALL AGES WITH AN EYE FOR DETAIL, A LOVE FOR VINTAGE AND APPRECIATION FOR TAILORING. ACCOMODATING A WIDE RANGE OF CUSTOMERS, REWORKING AND REUSING PRE-LOVED GARMENTS, I AIM TO TAKE THE CLASSIC SILHOUETTES OF TAILORING ADDING THE TIMELESS DETAILS OF COUNTRYWEAR IN A SUBVERTED WAY.

ART AND DESIGN CONCIIOUS, MY CUSTOMER LIKES TO MAKE UNPRETENTIOUS STATMENTS THROUGH HIS CLOTHING. HE KEEPS AN OPEN MIND WITH CLOTHING AND OFTEN EXPERIMENTS WITH STYLES AND JUXTAPOSITIONS, OFTEN LOOKING OUT FOR UNDERSTATED GARMENTS THAT WILL MAKE A RIPPLE IN THE CURRENT TRNEDS.

deconstruction experimentation



jackets developed from collages



testing colour combinations



sleeve inside of hunting jacket

Jacket sleeve idea

playing with jacket length



fabric swatches taken from secondhand garments and offcuts



elongated version of jacket 1



large pocket from shooting jacket



JACKET DEVELOPMENT

OUTFIT 1

OUTFIT 2

OUTFIT 3

OUTFIT 4



print inspired by vintage scarf

INSIDE VIEW OF JACKETS

FINAL JACKET CHOICES

clothsurgeon®
40 SAVILE ROW, LONDON, W1

ILLUSTRATED LINE-UP



clothsurgeon[®]
40 SAVILE ROW, LONDON, W1

CHOSEN OUTFIT CAD AND ILLUSTRATION

