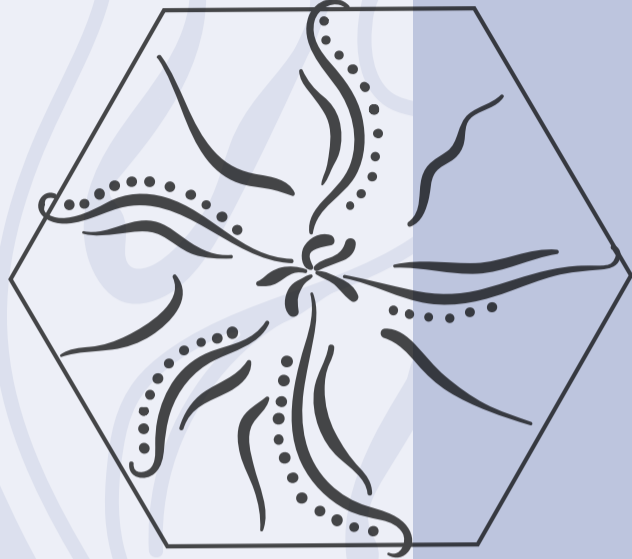
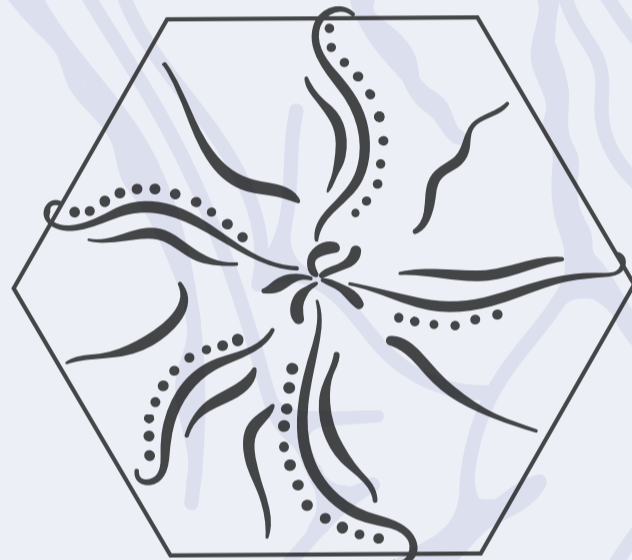


CECILIA CASTELL
ceals.castell@gmail.com
07879336366



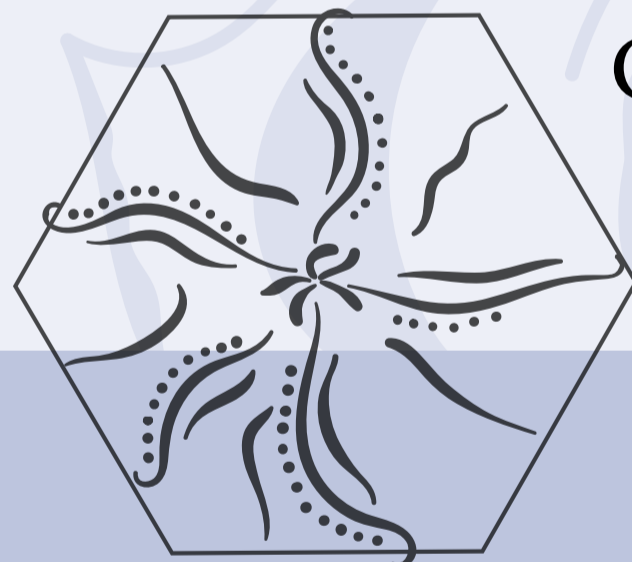
UNIVERSITY OF LEEDS
INNOVATION JOURNAL
Cecilia Castell



BETHANY
WILLIAMS

X

Georgia O'Keeffe

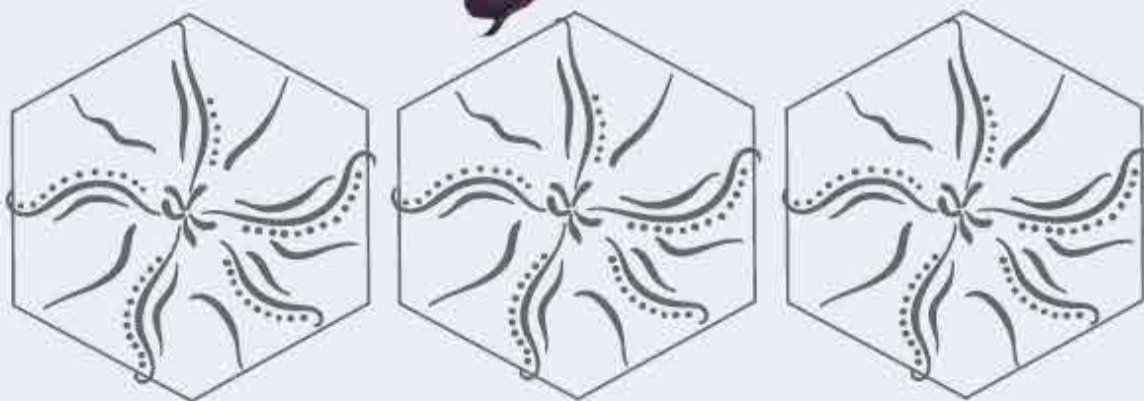


The concept for this collection is upcycling post consumer waste, with an inherent focus on the deconstruction of garments- how to utilise and repurpose garments and fabrics in the most economical way possible. Bethany Williams's pioneering work has been highlighted as an innovative way of lengthening garment lifecycles, by injecting print, colour and texture into her upcycled collections. This collection has drawn inspiration from Georgia O'Keeffe's floral depictions, as it provides new and innovative silhouettes and visual imagery. This concept and inspiration has resulted in a final outcome that has married innovative textiles with considered material sourcing and construction.



INSPIRATION

Georgia O'Keeffe



COLOUR

BETHANY WILLIAMS FABRIC

Deadstock/ scrap
100% Cotton Denim,
colours and washes
vary depending on
what is available .



100% Nylon.
Ultra Lightweight
material. Embroidery.
Skirts, dresses, out-
wearwear.



Sourced from outer-
wear garments. 72 %
Rayon, 28% Nylon.
Lightweight.



Deadstock
trouser fabric.
96% Cotton, 4%
Elastane.



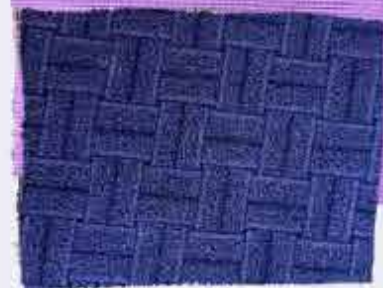
Deadstock 100%
Cotton Jersey.



Suiting fabric
with a woven tex-
ture. Midweight.
Suiting/ Soft tailoring.
100% Cotton

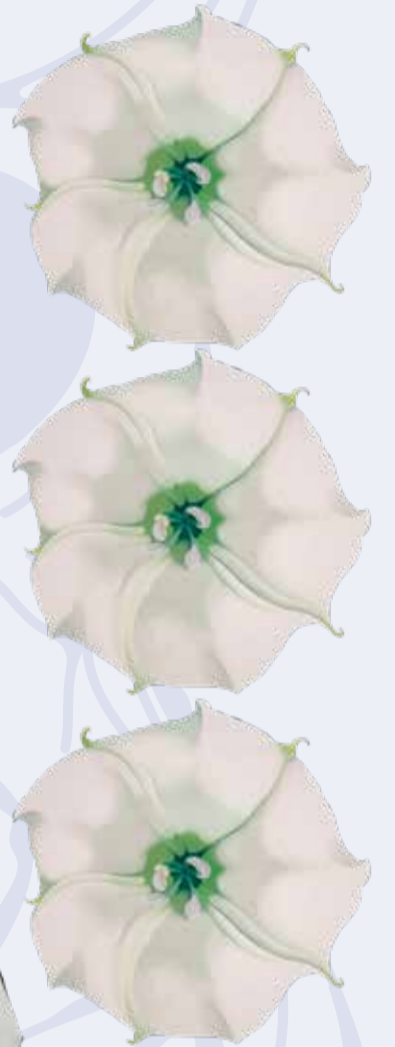
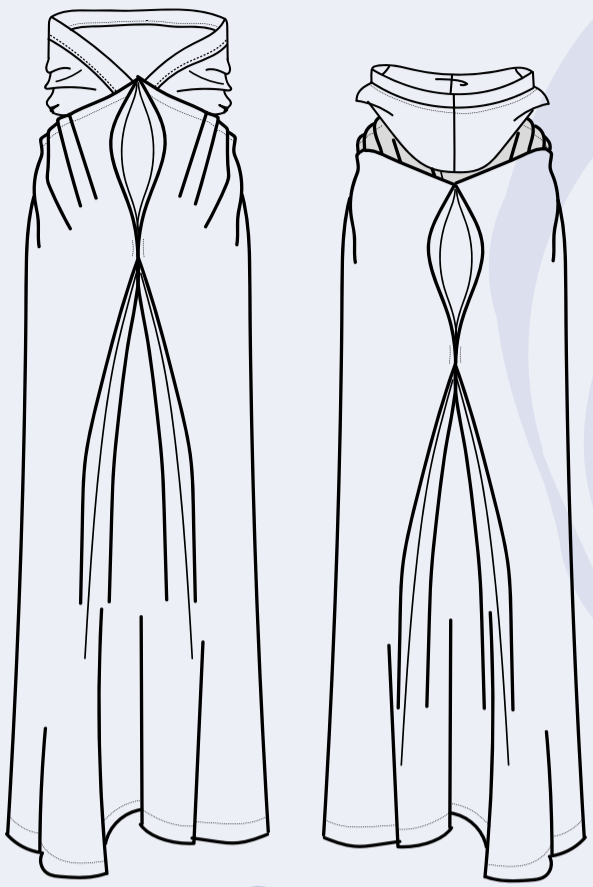


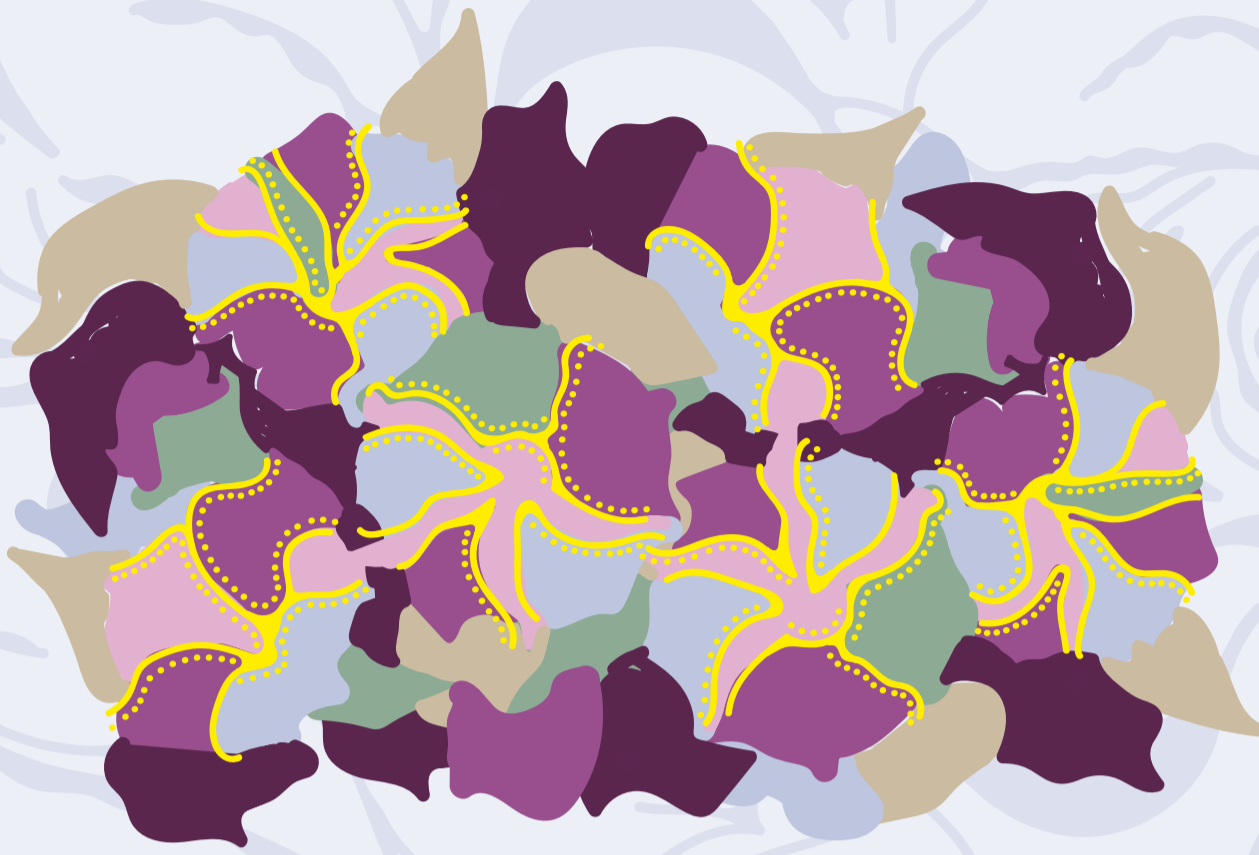
100% Cotton
shirting material.
Sourced from charity
shops. Colour and
print are dependant
on what is found
when sourcing.



BETHANY WILLIAMS SILHOUETTE

This is a physical representation of Georgia O'Keeffe's work in garment form. This develops a unique and innovative silhouette as it emulates the volume, contours and shapes of O'Keeffe's floral depictions.

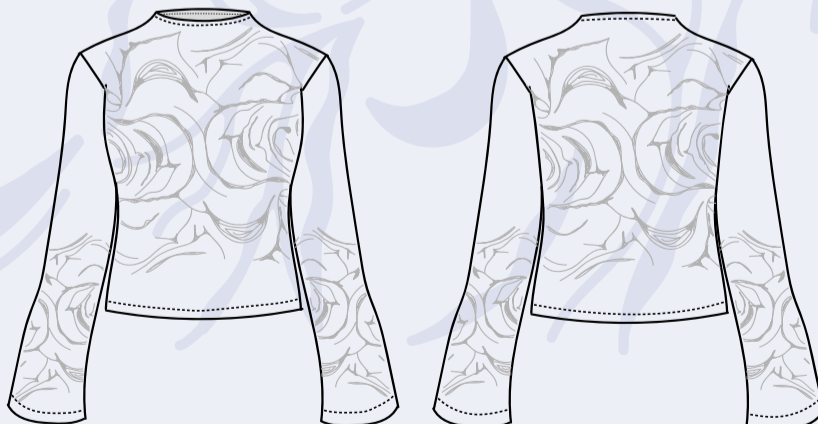
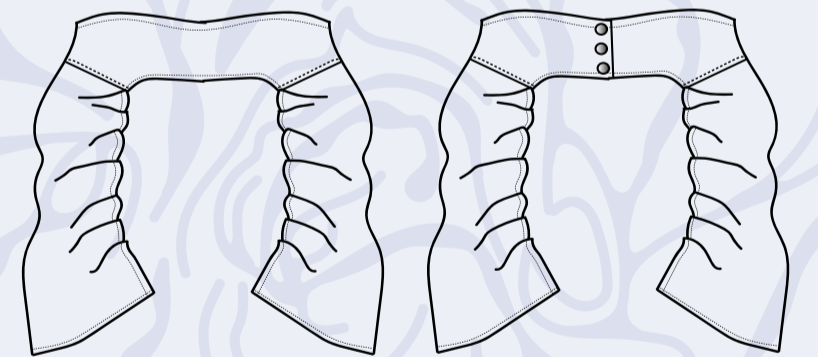
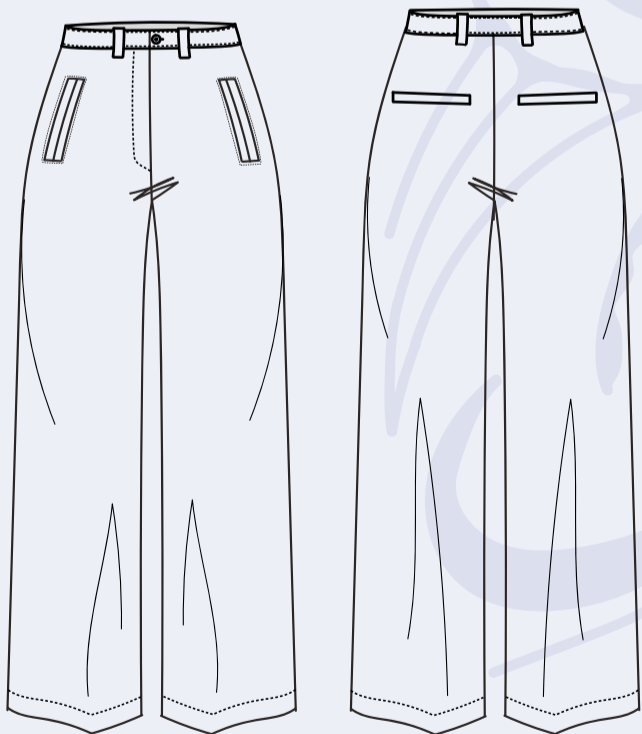
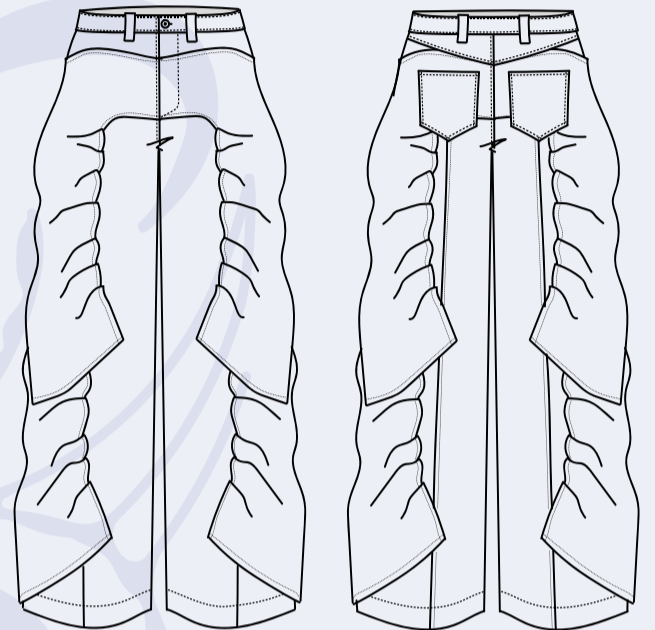
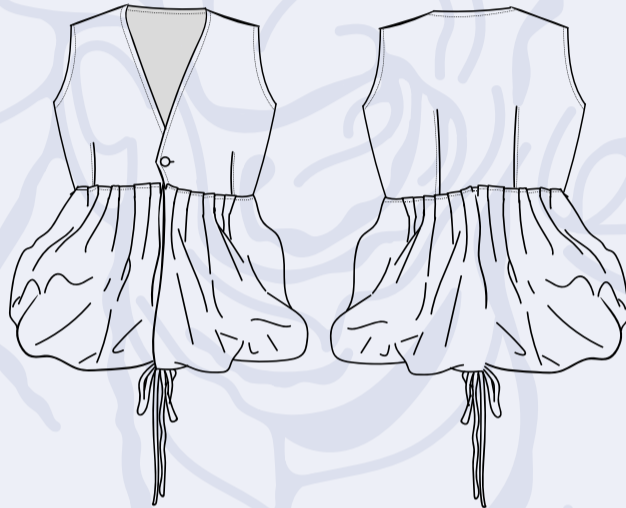
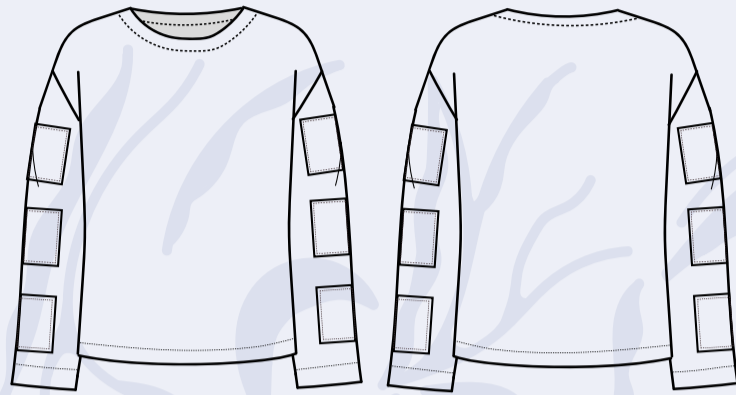




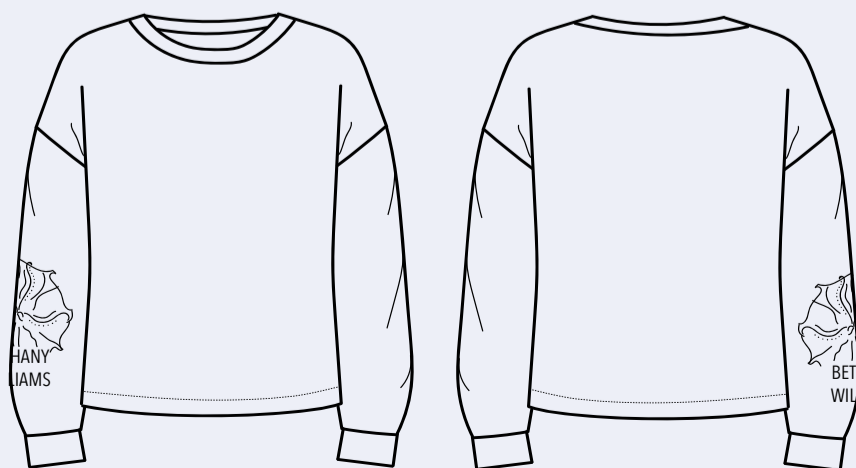
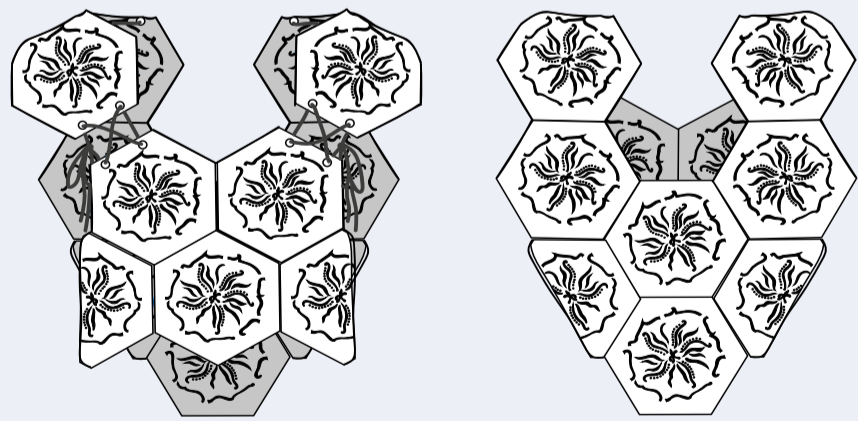
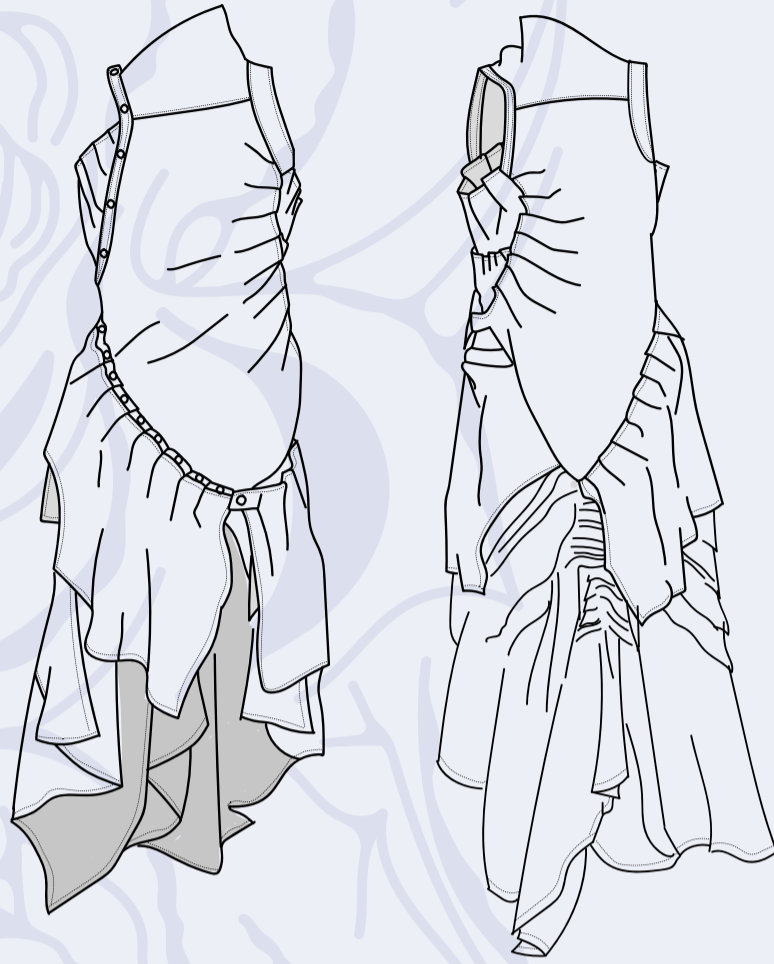
BETHANY
WILLIAMS
DEVELOPMENT

BETHANY WILLIAMS

TECHNICALS



BETHANY
WILLIAMS
FINAL TECHNICALS



BETHANY
WILLIAMS
FINAL LINEUP





BETHANY
WILLIAMS



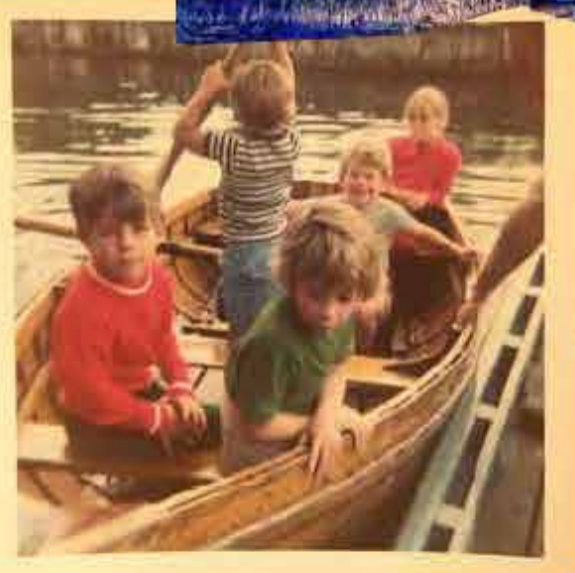
CECILIA CASTELL
ceals.castell@gmail.com
07879336366

UNIVERSITY OF LEEDS DESIGN JOURNAL Cecilia Castell

This collection is inspired by photographs found in my grandmas archives of my mum and family on holiday in Amroth, Wales on the 70s. These photos have an intense colour to them that has inspired the colour palette of this collection. As the photos are 50 years old, the design aesthetic is very different to what it is today, which has inspired a new design identity seen in this collection. Imagine being on a cold windy beach, having just gotten out of the sea, wrapping and wearing anything and everything to get warm, the end result is a mix-matched outfit that incorporated different colours, textures and silhouettes- This is the collection. Development includes print, chunky knit, weaving and layering of textures and colours. ACNE STUDIOS is the brand this collection is for, as the oversized nature of the collection is matched with textural exploration, much like the ACNE STUDIOS aesthetic.



Trend Concept
Welsh Summertime
Vintage 70s summer



Acne Studios

Acne Studios

Welsh Summertime Colour Palette

These colours are bold and have been taken from my grandmas photographs. They can be used harmoniously, in monotone looks, or in contrast to one another, creating a more mix-matched aesthetic.



Welsh Summertime Fabric Board

1. Outerwear fabric. Extremely lightweight. 100% Nylon
2. Denim. Trousers/ Jackets. 100% Cotton
3. Midweight Fabric. Structural/ Tailored garments. 75% Cotton, 23% Polyester, 2% Elastane
4. Midweight Fabric. 93% Cotton, 7% Elastane
5. Cotton Wool blend fabric. Slight stretch. Dresses/ Trousers. 90% Cotton, 8% Wool, 2% Elastane



6. 100% Cotton Shirting Fabric. Primary Colour Check. Lightweight
7. 100% Cotton Shirting Fabric. Blue/ Red Stripe. Lightweight
8. 100% Cotton Shirting Fabric. Primary Colour Check. Lightweight
9. 100% Cotton Shirting Fabric. White Multi Colour Stripe. Lightweight

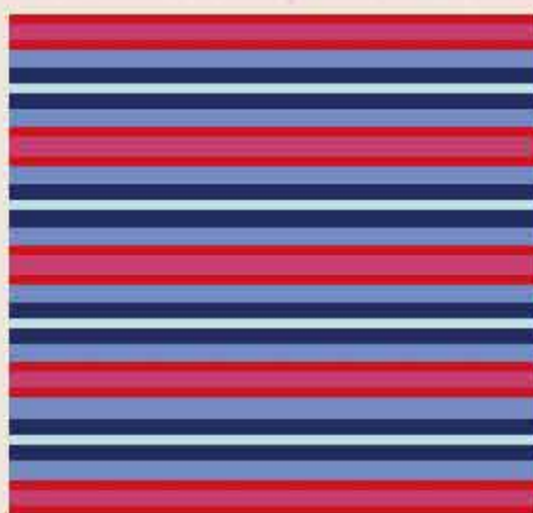
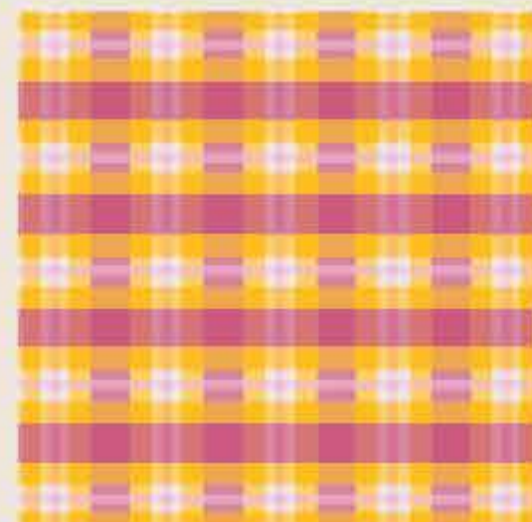
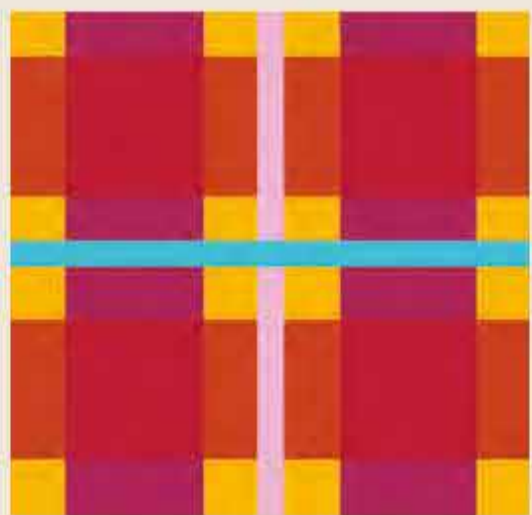
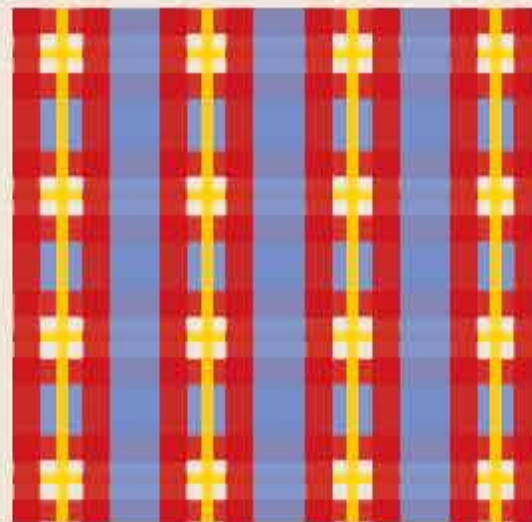
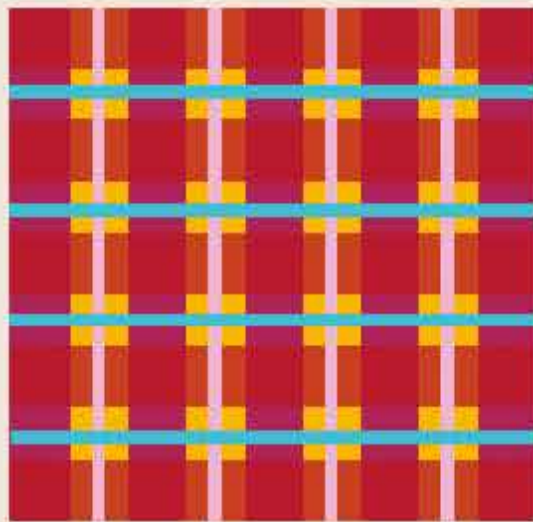
10. Cord fabric. Midweight. 100% Cotton
11. Cord fabric. Midweight. 100% Cotton
12. Woven Burberry fabric. Midweight. Soft tailoring. 100% Cotton
13. Plain Burberry fabric. Midweight. Soft tailoring. 100% Cotton
14. Burberry Fabric. Wool Cotton Blend. Mid Weight. 94% Wool, 6% Cotton



15. Tartan Mid Weight fabric. Light jackets/ Trousers. 100% Cotton
16. Plain Cotton fabric. Mid- Lightweight. Shirts/ Trousers. 100% Cotton
17. Tartan Mid Weight fabric. Light jackets/ Trousers. 100% Cotton
18. Lightweight Cotton Twill Fabric. Plain. Shirting/ Layering. 100% Cotton.

19. Cashmere Tartan Fabric. Midweight. 100% Cashmere Wool
20. Outwear fabric. Heavyweight. 100% Wool
21. Woven 2 tone fabric. Heavyweight. 100% Wool
22. Woven 3 tone fabric. Heavyweight. 100% Lambs Wool
23. Wool fabric. Heavyweight. 100% Wool





Acne Studios

PRINT DEVELOPMENT

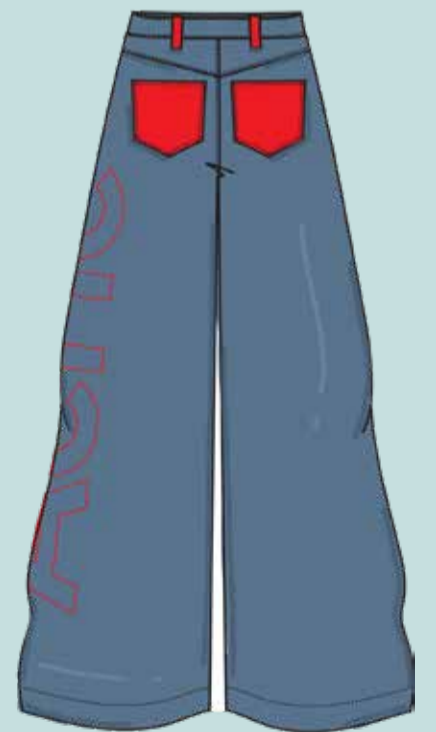


Acne Studios

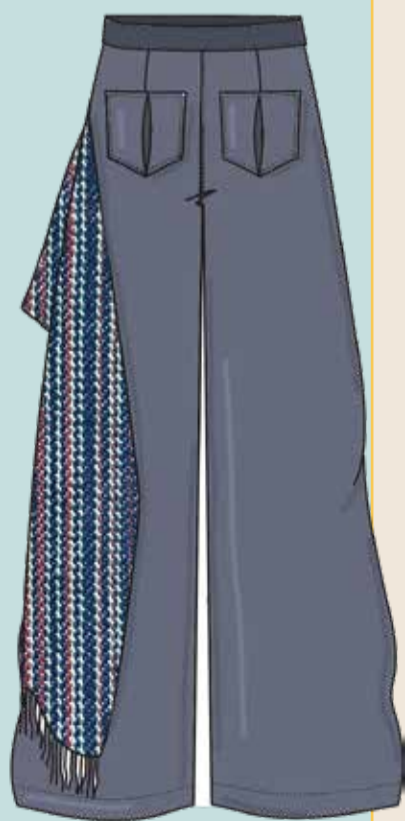
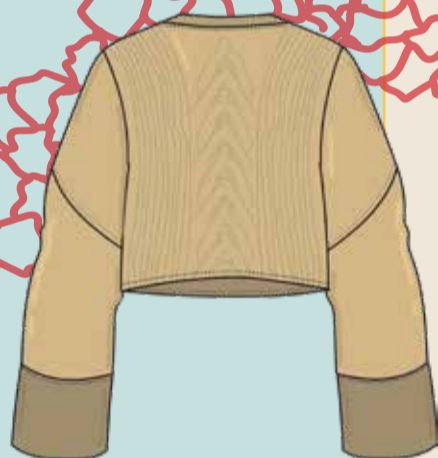
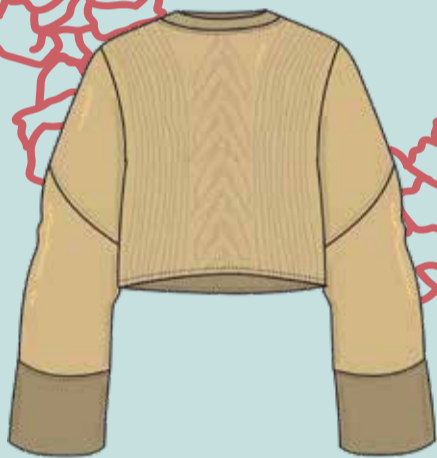
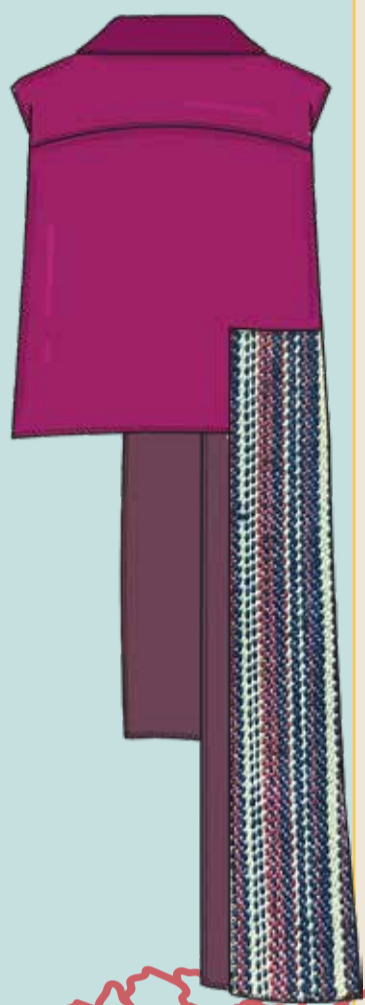
WEAVING DEVELOPMENT



Weaving experimentation allows different colours, textures and fabrics to be intertwined with one another, to create new and innovative textiles. The potential of this technique is endless.



Acne Studios
TECHNICALS



Acne Studios
TECHNICALS



Acne Studios
FINAL ILLUSTRATIONS