



ATTENTION



LOST IN MAZE



# A REBEL'S REVERIE

even a rebel has a dream,  
 having a dream,  
 is it possible to choose both instead of just one?  
 1992.25 km,  
 the distance from here to dream.  
 a rebel's reverie,  
 and I am here to make the dream come true.



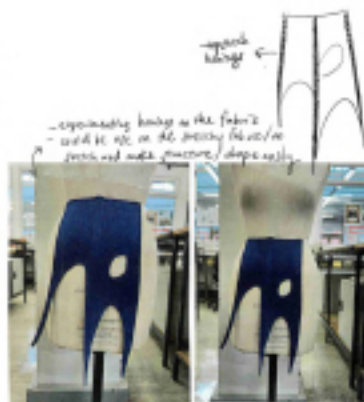
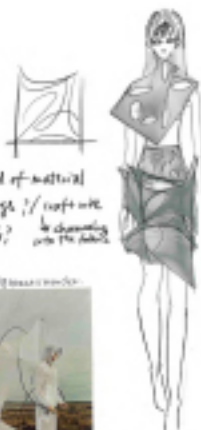
tulle  
lyra  
power mesh  
lace  
cotton jersey  
cotton



no matter what,  
I choose my own path.



- structural parts (?) what kind of material
- metal buckles / plastic buckles, / create with
- to assemble on one fabric
- is it possible? or top
- is depending on the fabric



inspired by the methods of illumination  
on one and on the other the pieces together and  
they with the different direction of light manipulation

view change



- place the top on  
different angle  
of the mannequin



- the hole and folded parts create inspiring effect
- the more layered the darker hole of black
- with the fabric



- the postures of the fabric's weight

postures of form



draping and the curves of the fabric



work along with different materials



to wrap her in the fabric



inspired by...  
- making and also still some...  
- make the fabric...  
- make the fabric...  
- make the fabric...  
- make the fabric...



- making design is...  
- trying to make dark & light...  
- let hair/and the fabric...  
- let hair/and the fabric...  
- let hair/and the fabric...



make a form...  
inspired by...  
step



note for the bodice pattern

- use bodice to shape - when you patterned
- pattern bodice and skirt with bodice
- use normal pattern bodice
- as the bodice is made, the skirt is made
- stretch the bodice to make the skirt
- if the bodice is not stretch, it will look stretched



note: bodice bodice

critical areas:  
 front neck dip - 2/10/11  
 back fitting  
 take out top of the top dress



front fitting the bodice pattern is in the bodice to make more machine.



- fittings of bodice

lower skirt



note: fitting of skirt with bodice

front

- (cutting?) on the seam (lower edge to separate?)
- extra layer - real edge (to create the appearance of 2 colors, otherwise it's gonna stretch after washing period in laundry)

- make it more 50
- the bottom of the shirt being more of the top

Back

- make longer along the top to the side to give more details of the view
- the top behind could change to X
- extra layer (pencil?) back to top/paper/clip? do not up
- design similar for the real fabric. This is in a piece as different for the first one



also  
nd  
as this  
B?



add length ↓

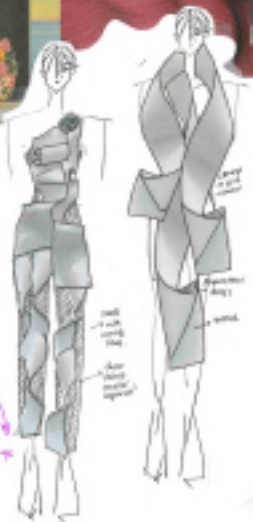


- the button jacket black was to change material/black or material black
- opening of the collar (if it's long/short/neck deep?) how to shape the shape of it (collar wrapping)
- add length to the hem/sleeve cuff
- add shawl (change 7-8 cm)
- think open up to the back/pockets both sides into original and inner side get



Luciano Pavarotti - Opera costumes

study of a flower petals



study paper design - give more clarity / study ideas via design to create trend



# Break free

flower petals

- densely placed  
(like from  
the side)



- delicate lines / beautiful  
text.



for the form



- Clear difference from the rest  
Down are lighter in the, and are  
darker, it gives an identity to each  
of the flower.



Our bodies are just like flowers,  
different bodies will have different curves,  
as well as flowers, the colors on every flower  
have huge differences.





## Dyeing Process



1- washing white cloth  
 2- Dyeing process  
 3- Completed dress to create different effect.



4- completed dress to create different effect.



- The idea of the dress (long/real long) after following the model idea, and the long skirt should also be.

- The shoulder part has two folds to show an interesting feature the model. (could fit the pattern shape, rather than making it as a dress)



- Buttons: have to be invisible fabric. Create bag on the skirt.

- Zip: Choose white zipped. White, white, let the right side of the dress.



- The back opening has changed and with the shape accompanying the back strap.



- The back won't be added. The shoulder + fitting to be more secure and comfort.

## Final design



- swapped the fabric and fabric with hand, and use different ways dyeing. Effect of giving extra fibres.



- Create an added color by using different dyeing tool.



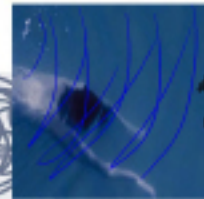
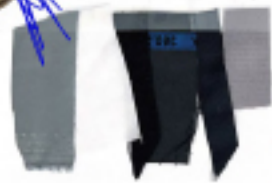
- used other print more shiny effect. Completed pattern, one of her own idea dress design.

- making it to dye

driving  
in  
raining

some  
voluntarily  
under  
best night  
festivals

After  
Midnight.



- why are you more voluntarily after midnight?
- for reference it happened every at night, why?
- ↳ The world has closed down and the noise you hear us to be more consistent of our inner world.
- to show that you give you what is made with your own hand.
- The sense of inner awareness in other that the voluntariness.



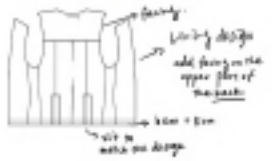
"The more the noise around you fades,  
the more you can hear in your own soul."



choose a look (1st cut)



changed details



### First Tailor



- Add length + 1cm
- point moving for 4-5cm
- add down details (4 pieces)
- opening 1.5 up back (over/under details) back of



- add cutting line
- down cut
- close the draft by using the cutting line



- Add more shoulder pads (around 1.5) also moving shoulder measurements
- Extra details (?)



### Second Tailor



#### Forward

- Regular fit
- Shorten the length by 1.5cm
- Details on the skirt add 3cm

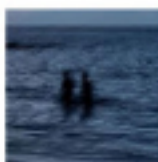


- take up 1.5cm in shoulder line for adding more space for shoulder pads



Measure: 1.5cm x 2.5cm

- Double for opening
- Release Double in clear material



Experimenting the color



two sides



me and myself



reflections and realisation



discovered dark side of personali  
of myself and how the two sides  
combine into one



inspired by!



bottom of a leather skirt with laser cut



back of a leather jacket

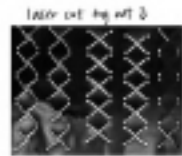


laser cut on the back of leather jacket  
make paper of glass (leather) to make the things like laser cut



- ① → fragile complex and hard to make (best fit)
- ② fragile no but its more modern
- ③ too wide and big

→ verify



laser cut by cut 3



Final check

- ② for the bottom of leather skirt front a bit above knee



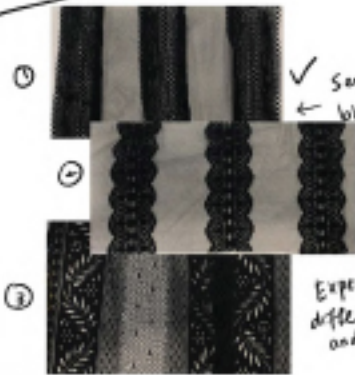
broken mirror



# Lace skirt

Dress

Curve cutting line with epistitch



✓ Sew with black tulle

Experience different lace and effect

pre-design



too complicated



too hard



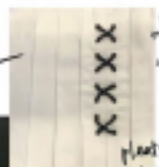
still not an enough



too structured



Lead-up details



pleats with lead-up details

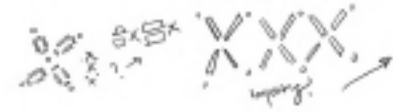
(experience the fabric & the lead-up effect)

black pleats

Shape



Back that the leather jacket with top no detail



knitting?

Result

using leather to create the shape from a false leg

