

PROJECT DESCRIPTION:

Due to following the emotional trends, I found people are more interesting with mystic in these few years. So, basing on the Yohji Yamamoto brand and recently the demand of trend aspirations, I will create a 'mystical' concept for women's wear collection.

From the visual part to description firstly, I will stay the deconstruction aesthetics from Yohji heritage incorporating the brands style code, also ensuring the mystic inspiration as personal inspiration.

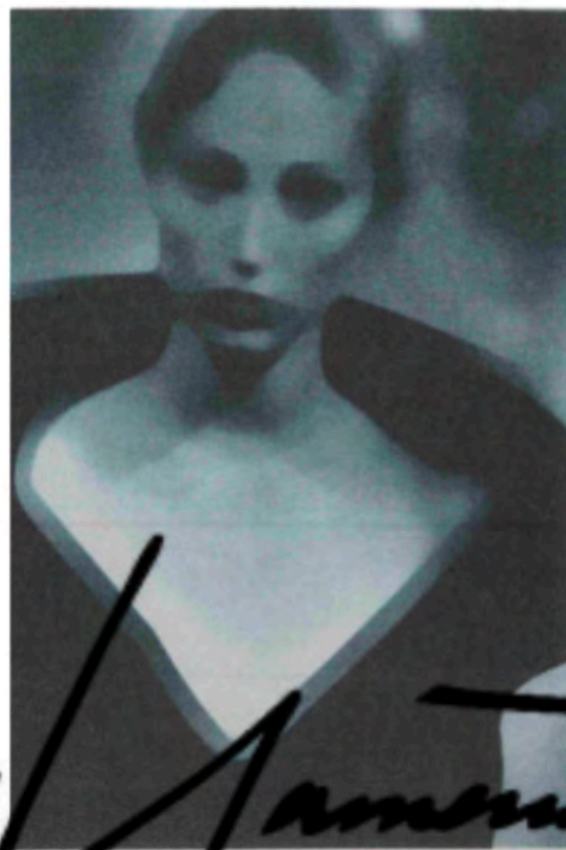
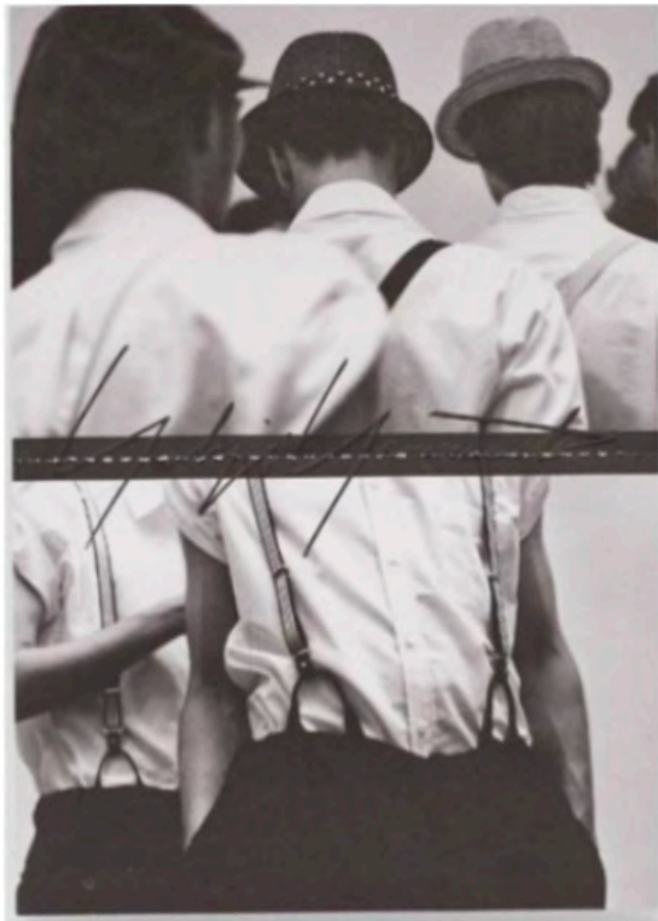
The key aspects of the collection will come from the brand research and analysis. Also, appropriate the gothic style that trying to skip from my usual design's 'safe zone area'. In another hand, I took the most favorite words to establish my concept: asymmetric, contradiction, immoral, destruction and so on.

RATIONALE:

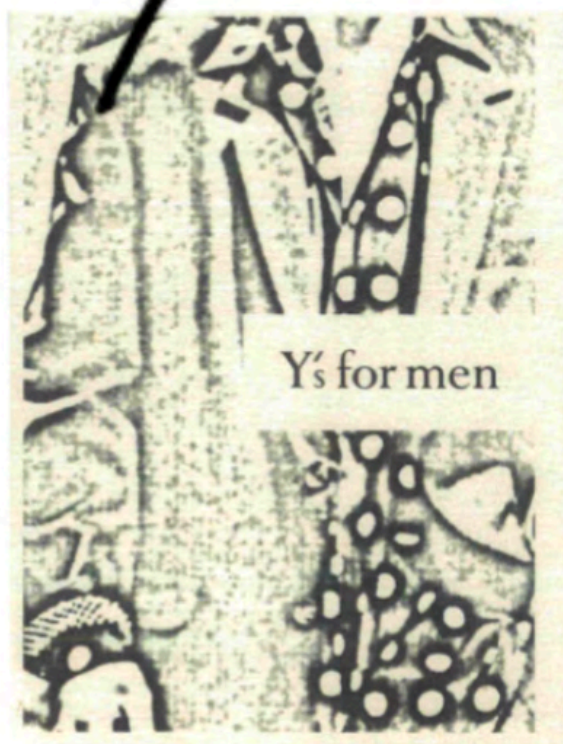
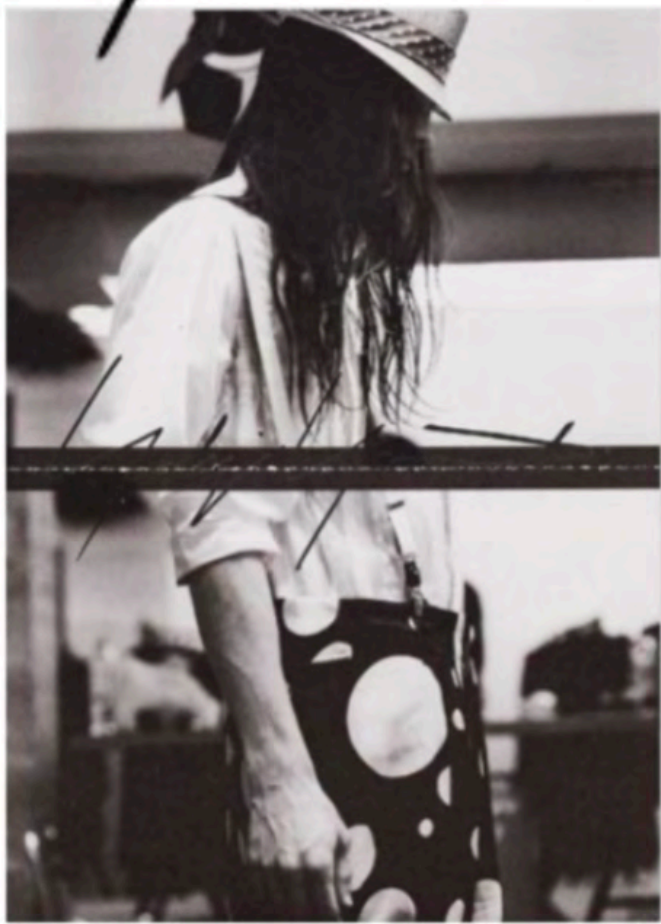
As a designer as Yohji Yamamoto, I am focusing on the womenswear collection. The fashion trends examined that the deconstruction garment is more popular in the years. The black, white color as the typical symbol as Yohji always in classic and these colors never out of fashion industry. The silhouettes of Yohji are designed to be Avant-grade and is typically defined as deconstruction where garments appear to be unfinished, raw, falling apart, and above all, imperfect. One of my key inspirations is separated to different pieces and costumers could wear their garments in a variety of different ways to approaching the slow fashion.

The collection will be lined with Yohji style codes and related with my own personal inspiration. For examples, the sharp silhouettes, the gothic layering, the deconstruction separated pieces and so on. To reaching people the unique way of wearing an outfit.

The unique fabric and materials are the keys of my aspect. I am trying to find more different fabric that both related my inspiration and Yohji aesthetic. The collection will be using some hand stitch skills to embroidery on the garment. The pattern cutting for this collection will be using a bit collages and draping concepts matching the tow different sides making it feel more 'contradiction'.

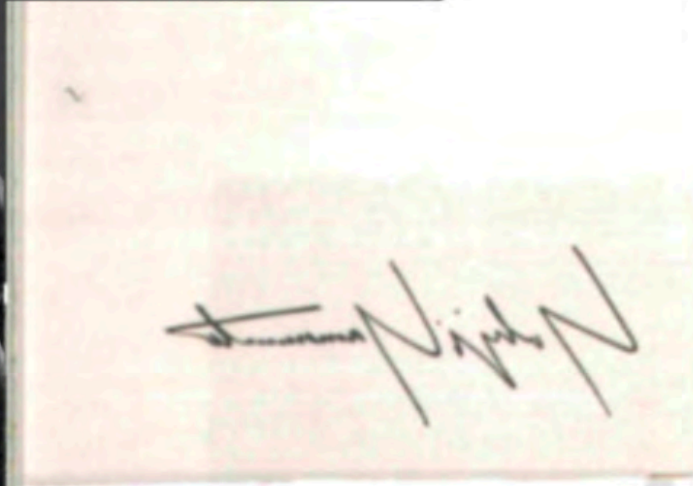


Gaby's Moments



BRAND

WITH MY EYES
TURNED TO THE PAST,
I WALK BACKWARDS
INTO THE FUTURE.



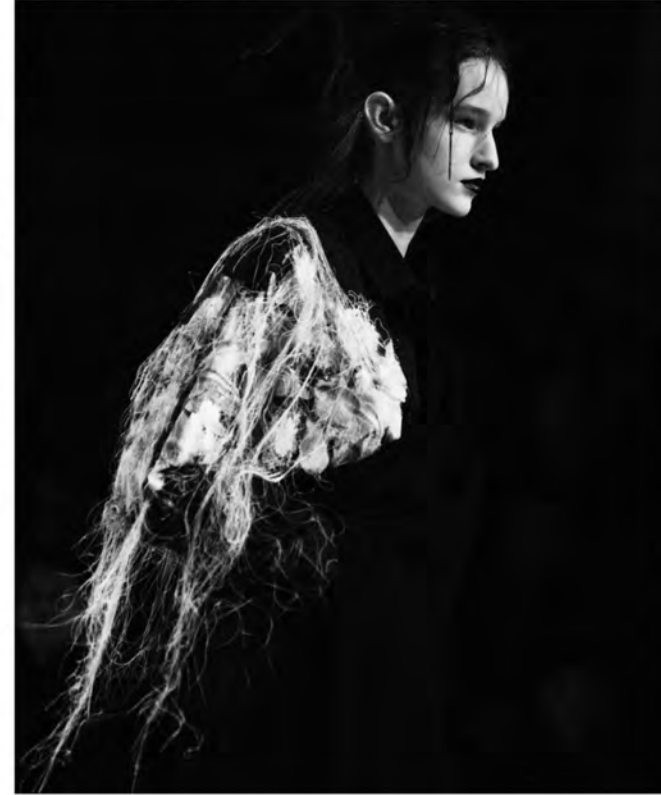
CONCEPT BOARD



ASYMMETRY



DAMAGE



COLLAGE



SILHOUETTE

MYSTERY × YOHJI YAMAMOTO

DESIGN PROCESS

- Draft 1: wide outfit

Second Layer with BONE

Layer 1: UNDERWEATH

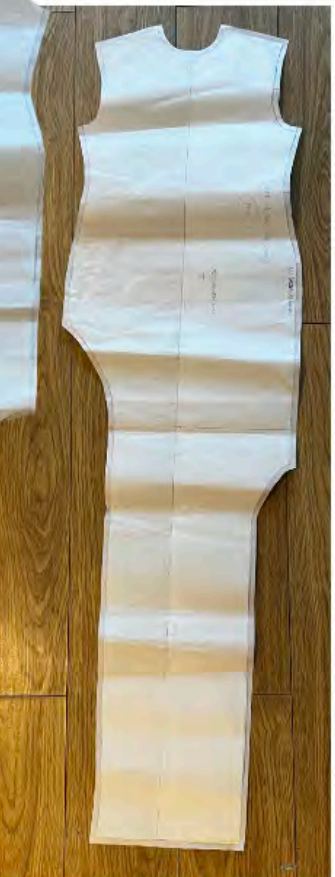
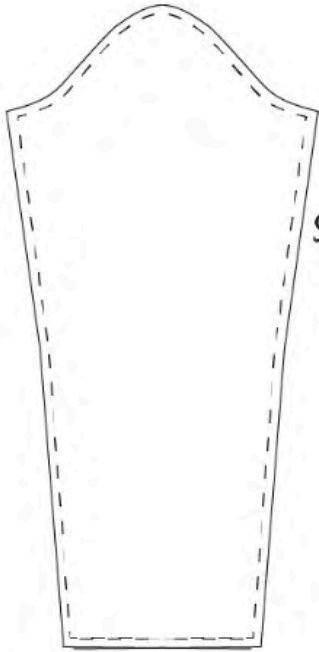
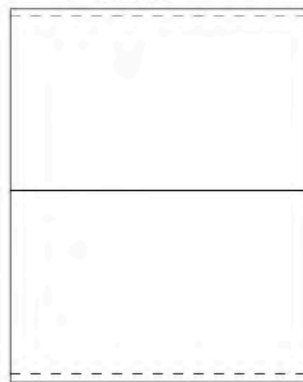
- Underneath Layer 2.

collar

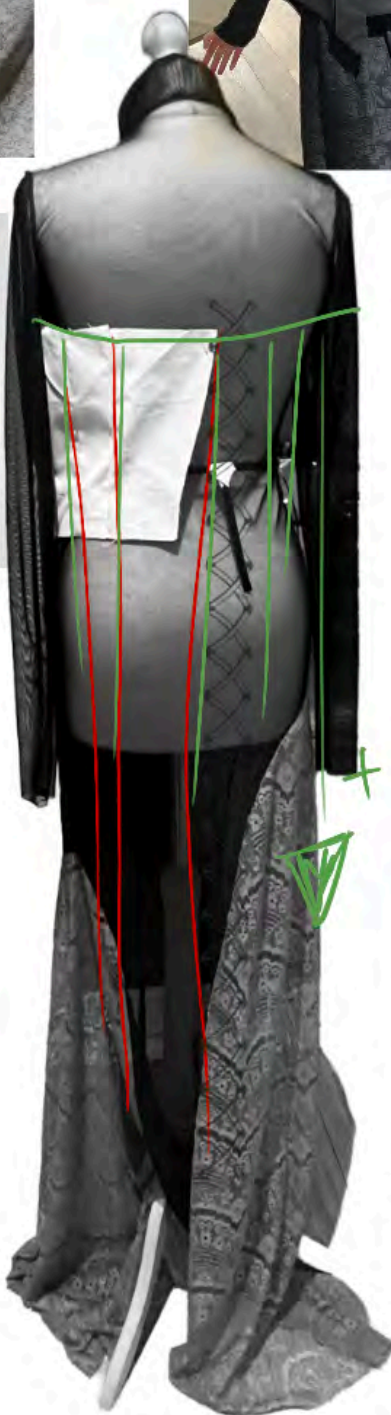
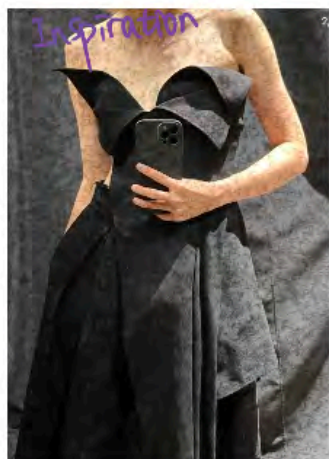
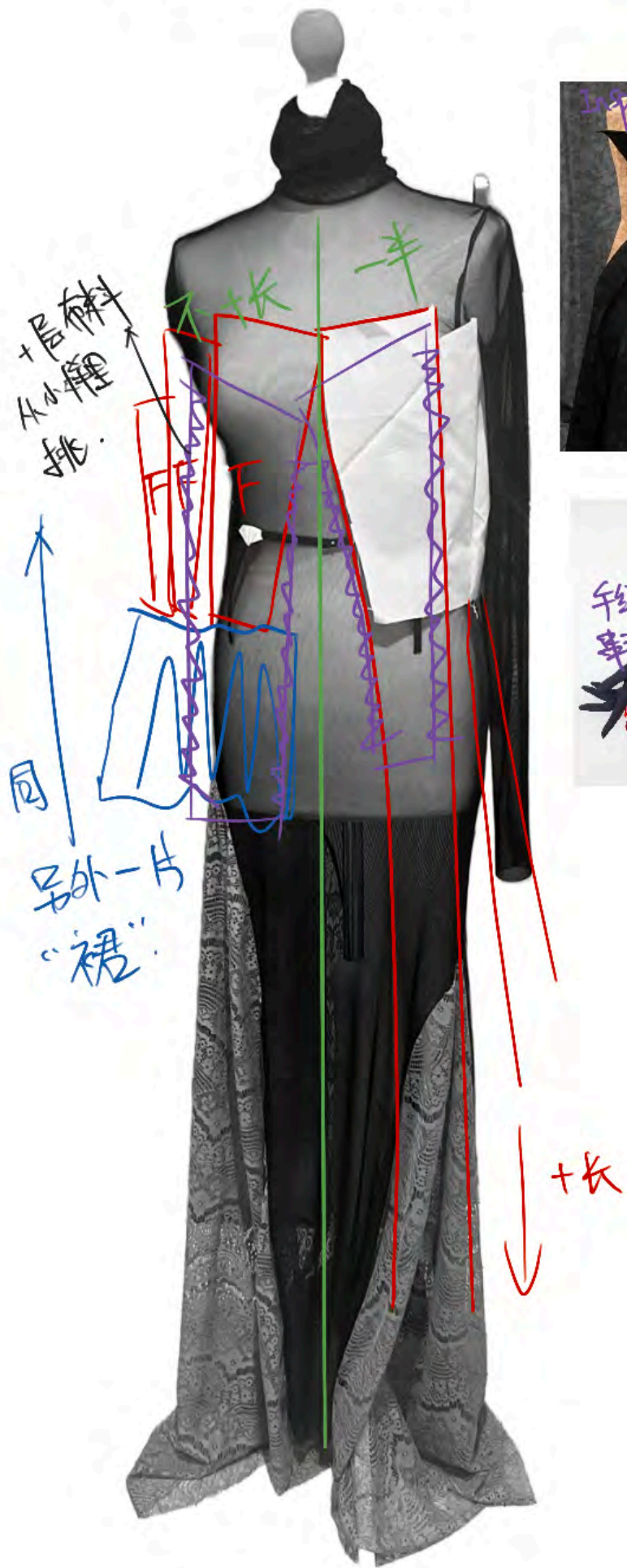
sleeves



Decorations Different pieces (ON THE TOP)
Irregular stretching on the top of second



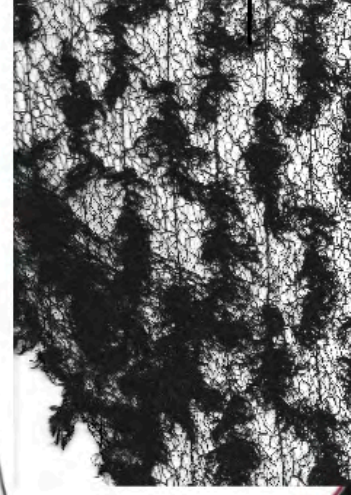
TOILE JOURNEY



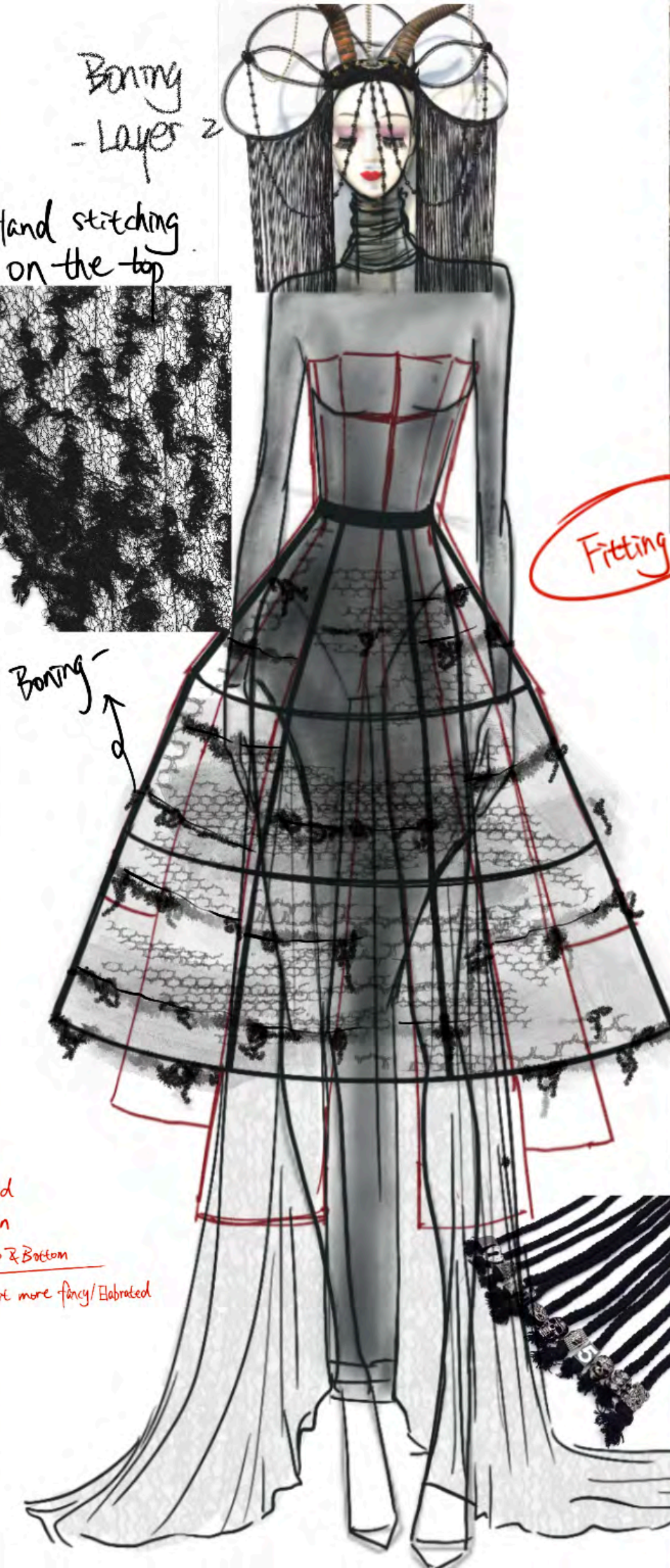
- Corset Layer 3.
- Layer 3.



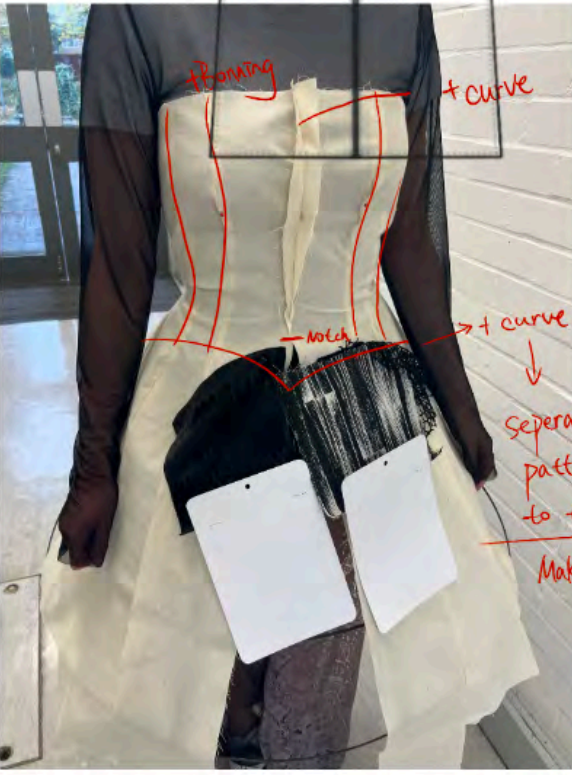
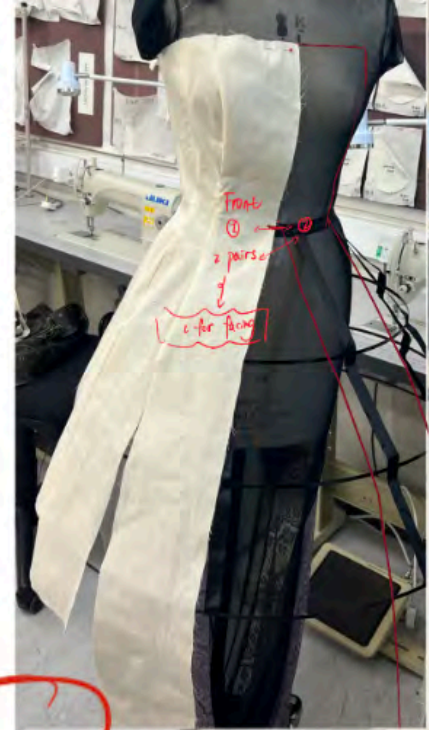
Hand stitching on the top



Boning Layer 2



Fitting 1.

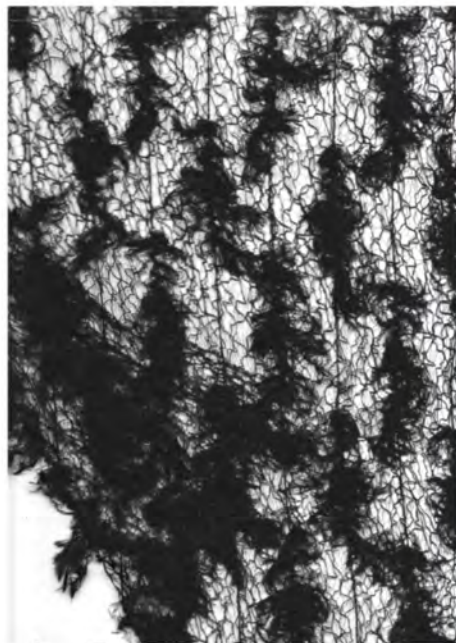


seperated pattern to top & Bottom
Make it more fancy/Elabrated



FABRIC & COLOUR

Elastic: 8%POLYESTER+92%NYLON

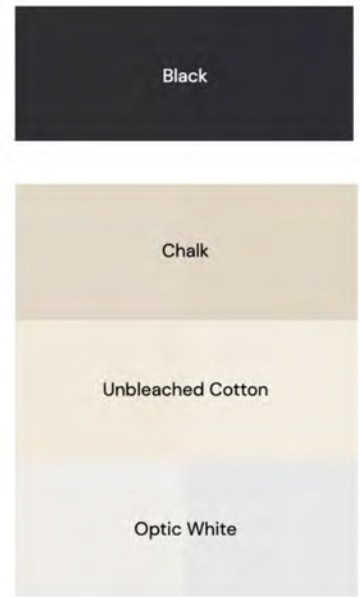


Quality Sample

品名: 14512
 成分: 80%棉 20%氨纶
 规格: 110海派
 产地: 中国
 备注: 中国海派行对A类



品名: 14512
 成分: 80%棉 20%氨纶
 规格: 110海派
 产地: 中国
 备注: 中国海派行对A类



100%POLYESTER

BAMBOO PULP FIBER

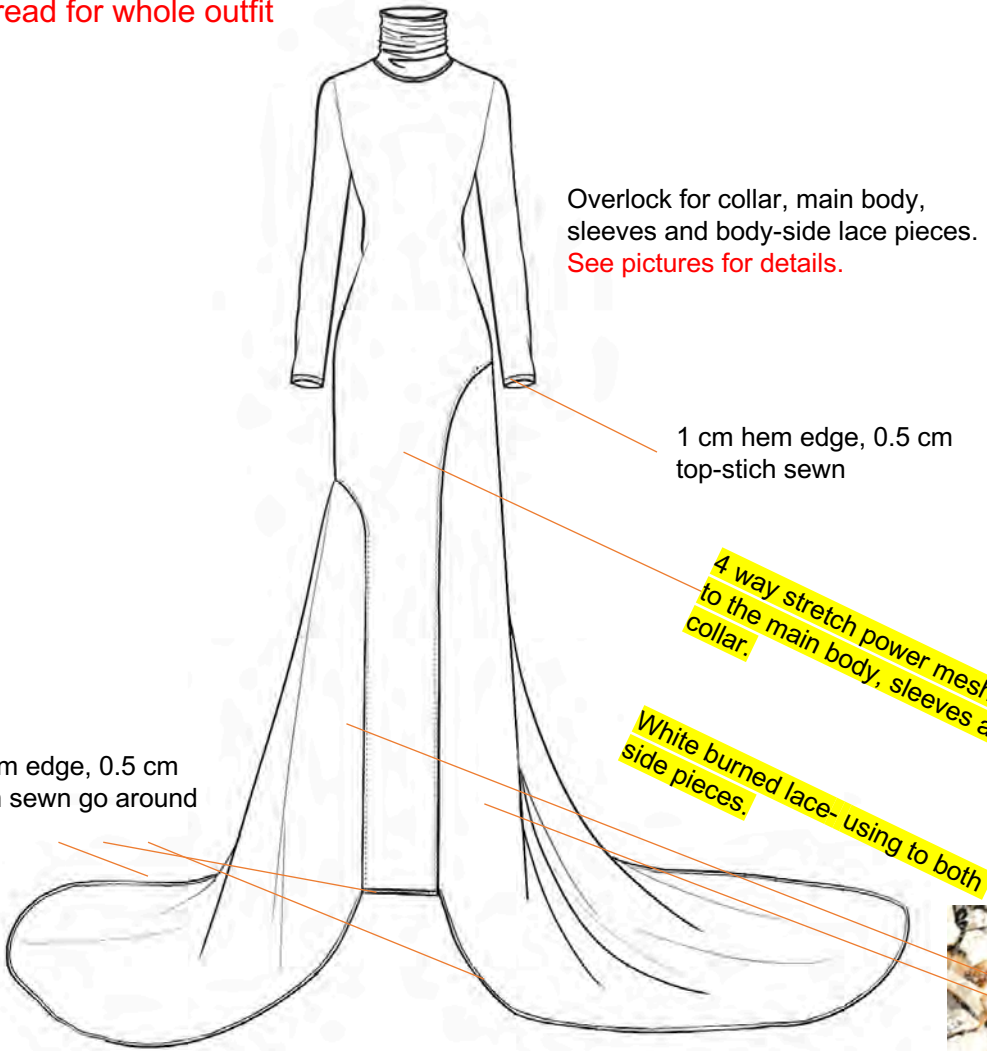


64%POLYESTER+33%COTTON+3%LYCRA

SIZE: 12	BRAND: YOHJI YAMAMOTO	STYLE: FUNNEL COLLAR ELASTIC DRESS	REF: SHEET NO 1 OF 3	DATE:04/DEC/2023
----------	-----------------------	------------------------------------	----------------------	------------------

FABRIC	Black elastic mesh and white lace
--------	-----------------------------------

Black thread for whole outfit



Front



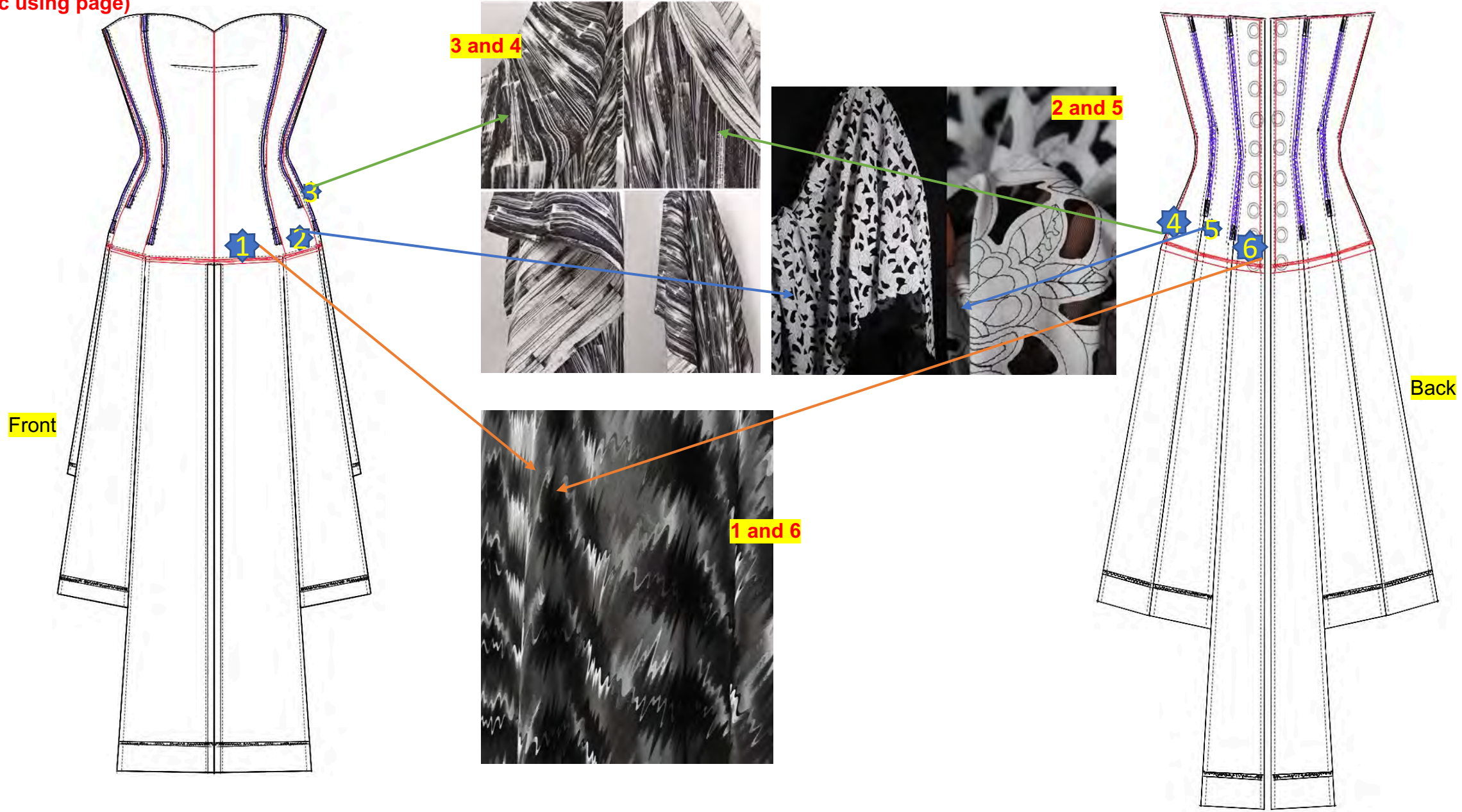
4 way stretch power mesh- using to the main body, sleeves and collar.

White burned lace- using to both side pieces.



Back

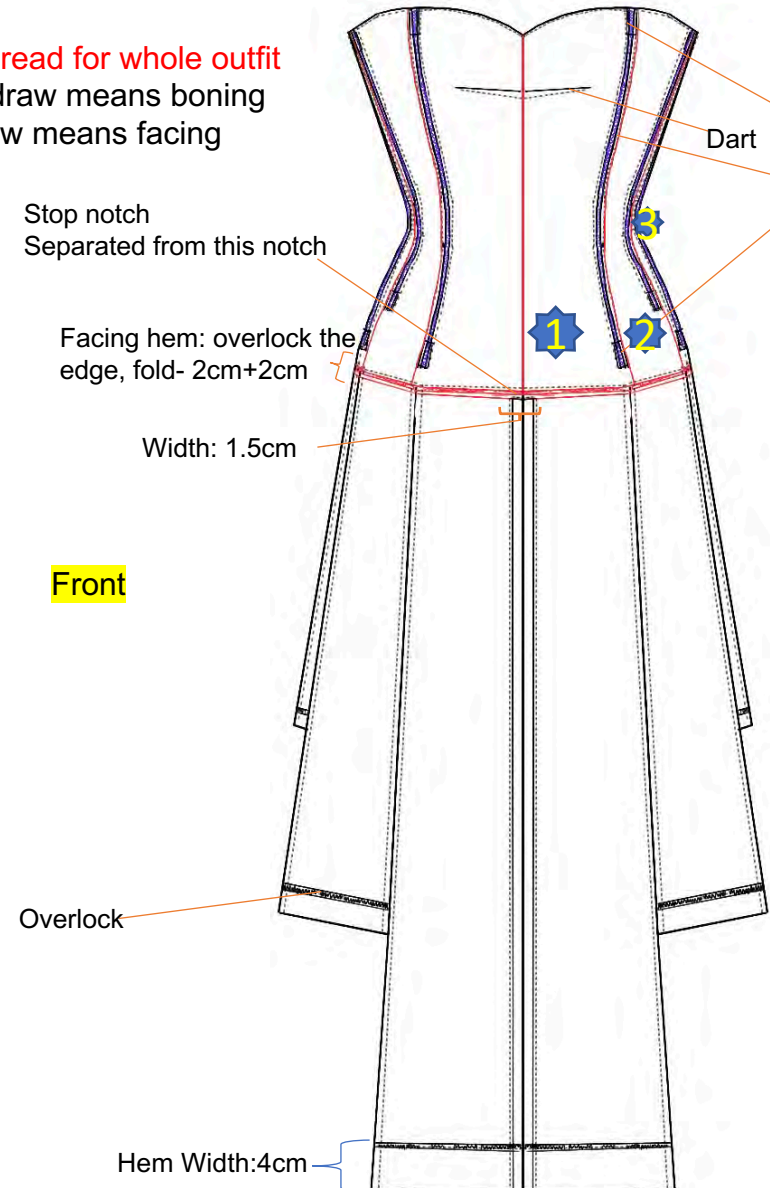
(Corset Fabric using page)



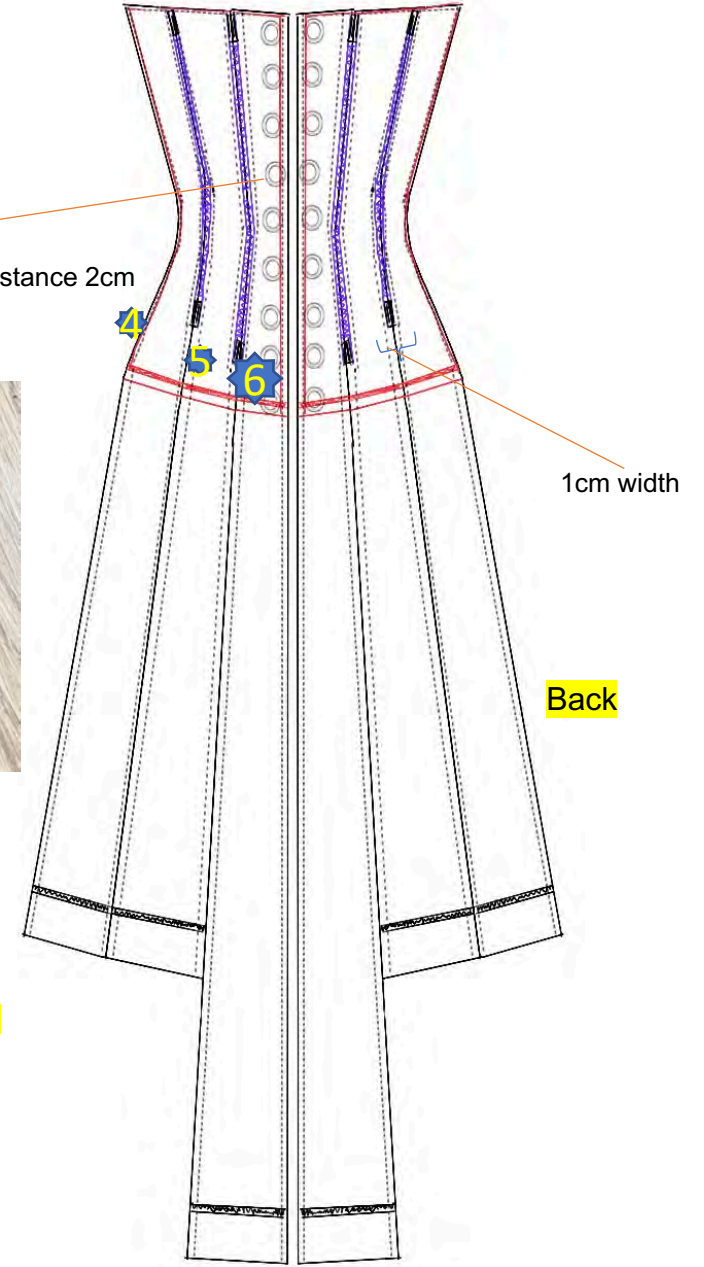
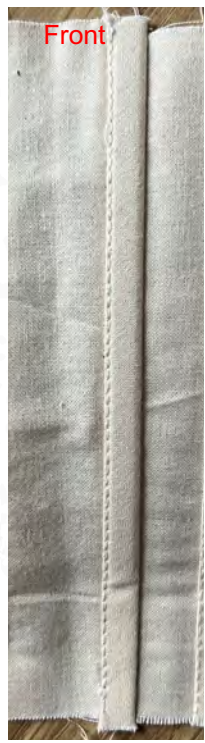
FABRIC Mainly polyester

All the pieces, facing and corset should be overlapped around first.

Black thread for whole outfit
 Purple draw means boning
 Red draw means facing



Boning- small (black) pieces fabric covering the edges(top and bottom).
 See below pictures of samples as the sewing way.



BRANDING

Swing tag



Pin badge



Promo







