



# **CIRCULAR SEAS; HAENYEO WISDOM IN FASHION**

**NATASHA DOBLE**

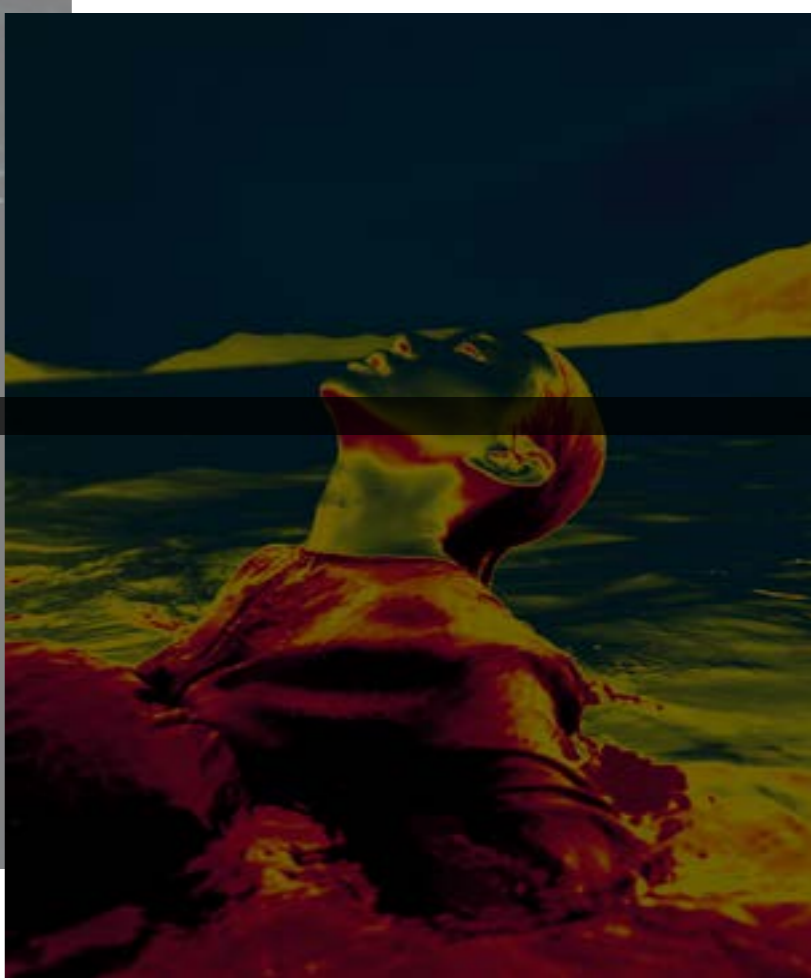
`n.m.doble@talktalk.net`

`@dobletash`

'ECO FEMINISTS' THE TRADITIONAL WAY OF LIVING AS A HAENYEO IS WITHIN A NATURAL CIRCULAR ECONOMY, SUSTAINABLY HARVESTING FROM THE LAND IN ORDER TO KEEP A CONTINUING CYCLE.



I HAVE CHOSEN TO DESIGN A ZERO-WASTE AND RECYCLE FRIENDLY COLLECTION. I HAVE CHOSEN TO USE SPECIFIC DETAILS IN FABRICS AND CONSTRUCTION TO MAKE STATEMENTS TOWARD SUSTAINABLE FASHION.





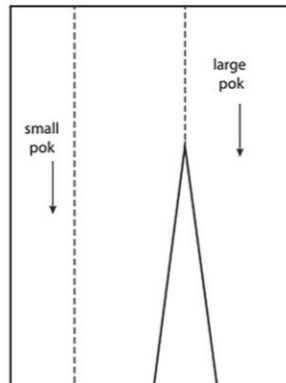
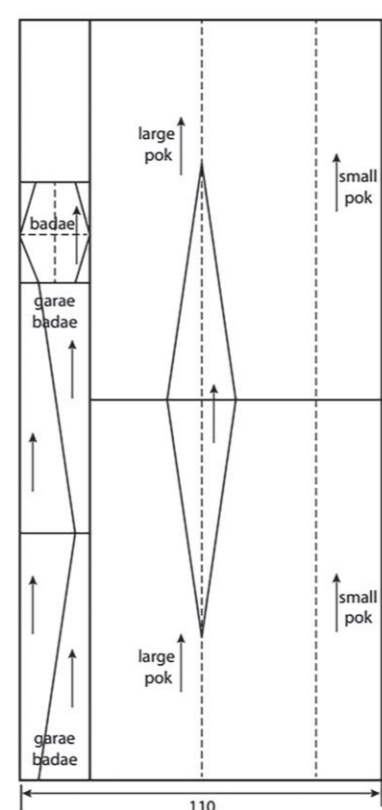


EXPERIMENTATION AND EXPLORATION OF PRACTICES CAN BE DESCRIBED BY MULTIPLE APPROACHES:

- TRADITIONAL INFLUENCE AND BASIC PATTERNS; TRADITIONAL KOREAN DRESS WAS NATURALLY DESIGNED AS ZERO-WASTE, IT USES PRINCIPLES OF RECTANGLE AND TRIANGLE SHAPES TO FIT A GARMENT TO A BODY.
- JIG SAW PUZZLE PIECING, FINDING INNOVATIVE WAYS TO SLOT PATTERN PIECES TOGETHER.
- SINGLE PIECES WRAPPING/TWISTING AROUND THE BODY TO CREATE BODY FORMS.

THE ZERO-WASTE PATTERN CUTTING HAS SLOWLY INFORMED AND DEVELOPED MY COLLECTION DESIGNS.

PAPER MARQUETTE HAVE BEEN USEFUL TOOLS TO WORK ON GARMENT CONSTRUCTION ORDERS AND TO GIVE A 3D INTERPRETATION OF A THEORETICAL GARMENT.







JOGAKBO WRAPPING CLOTH (BOJAGI)



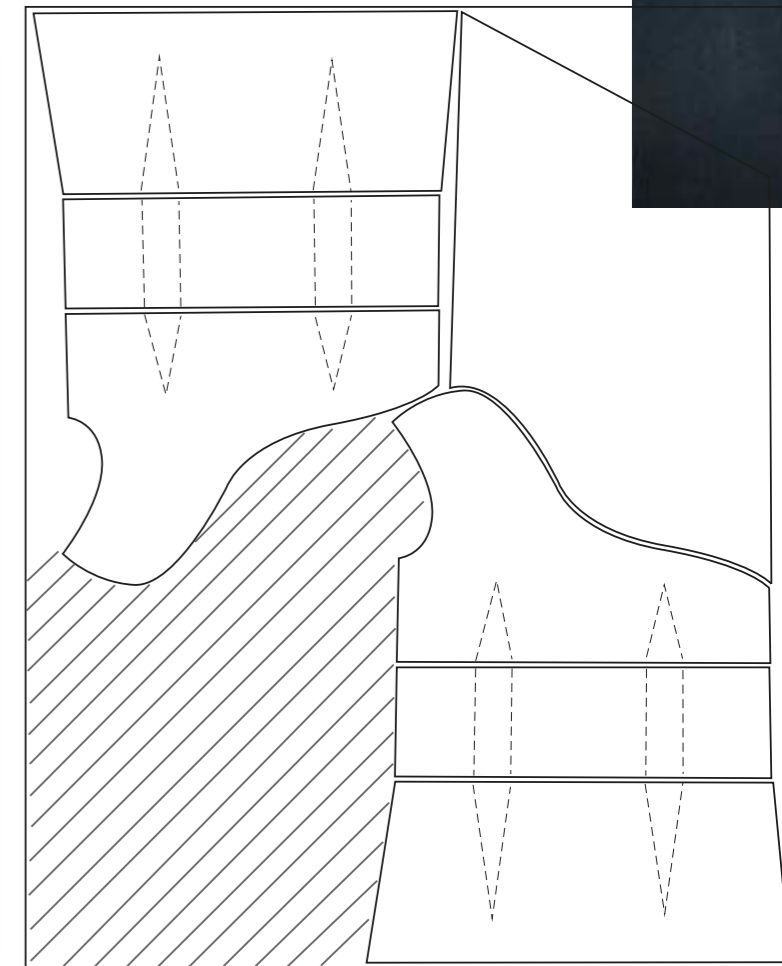
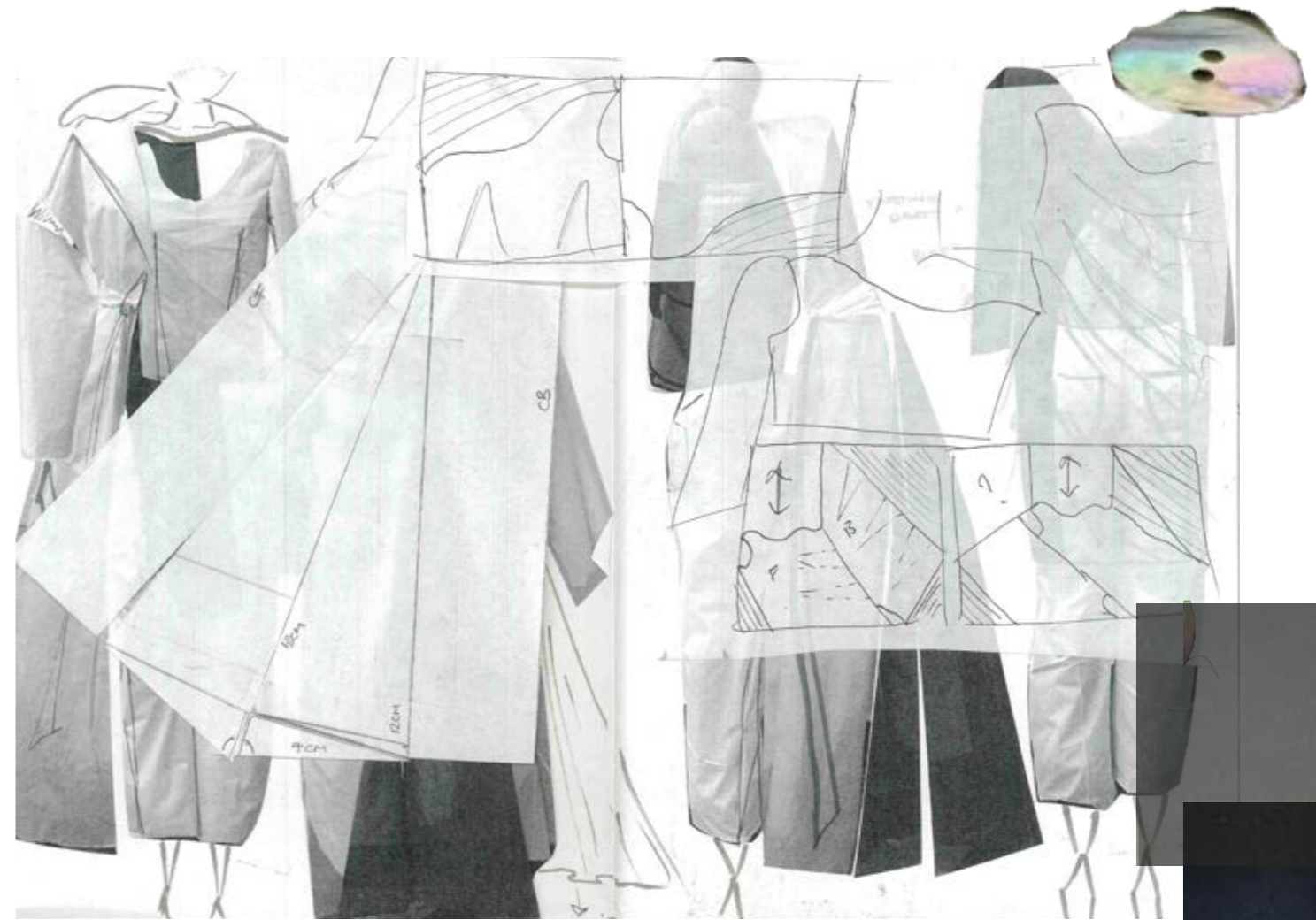
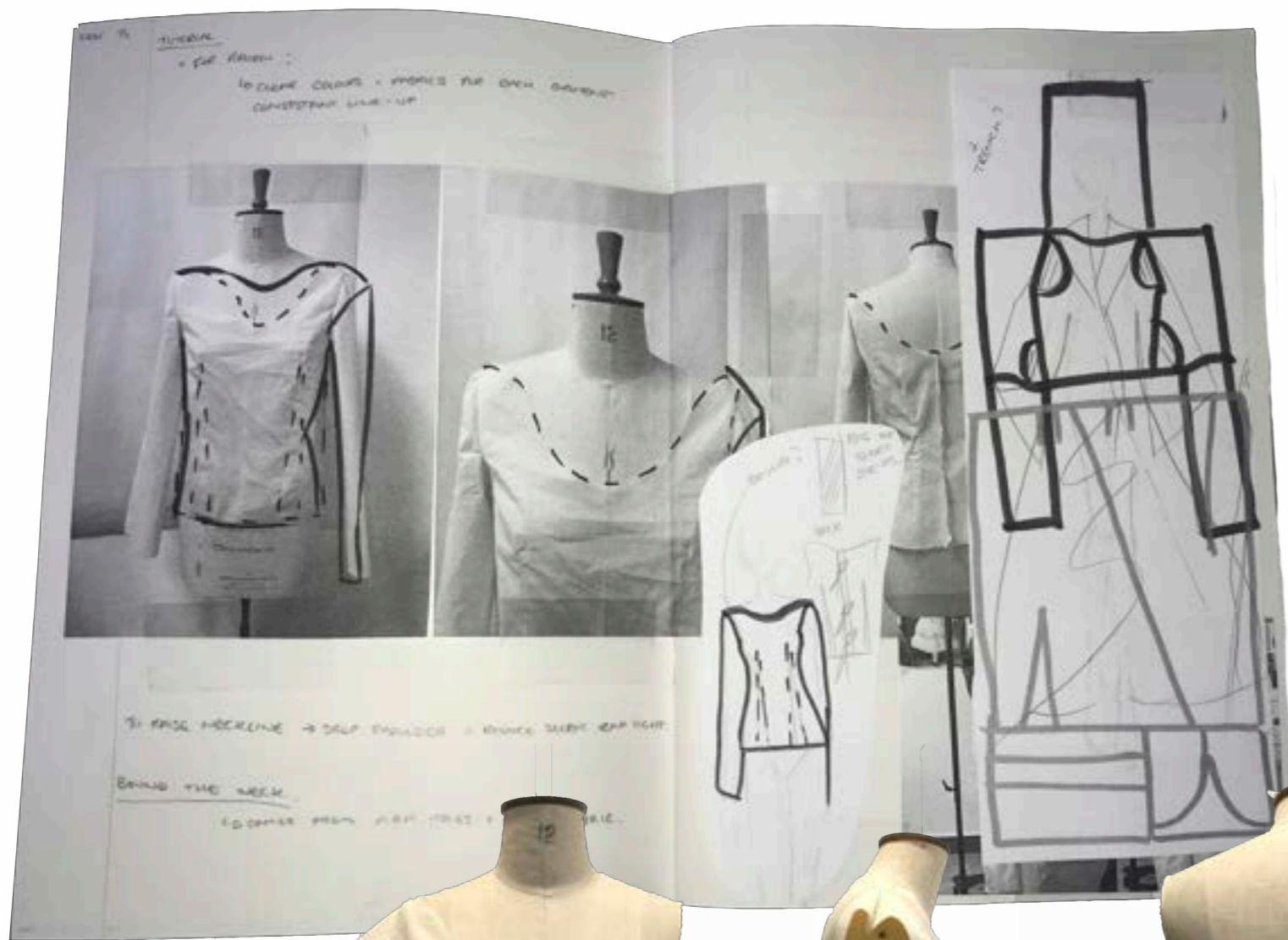
TO REPLICATE BOJAGI, I USED ORGANDIE FOR SHARP SEAM LINES, THIS THEN DEVELOPED INTO LIGHT STRUCTURED HOOD SHAPES. INSPIRING COATS AND FISHING CLOTHES MADE IN CONTRASTING LIGHT FABRIC TO OIL SKIN.



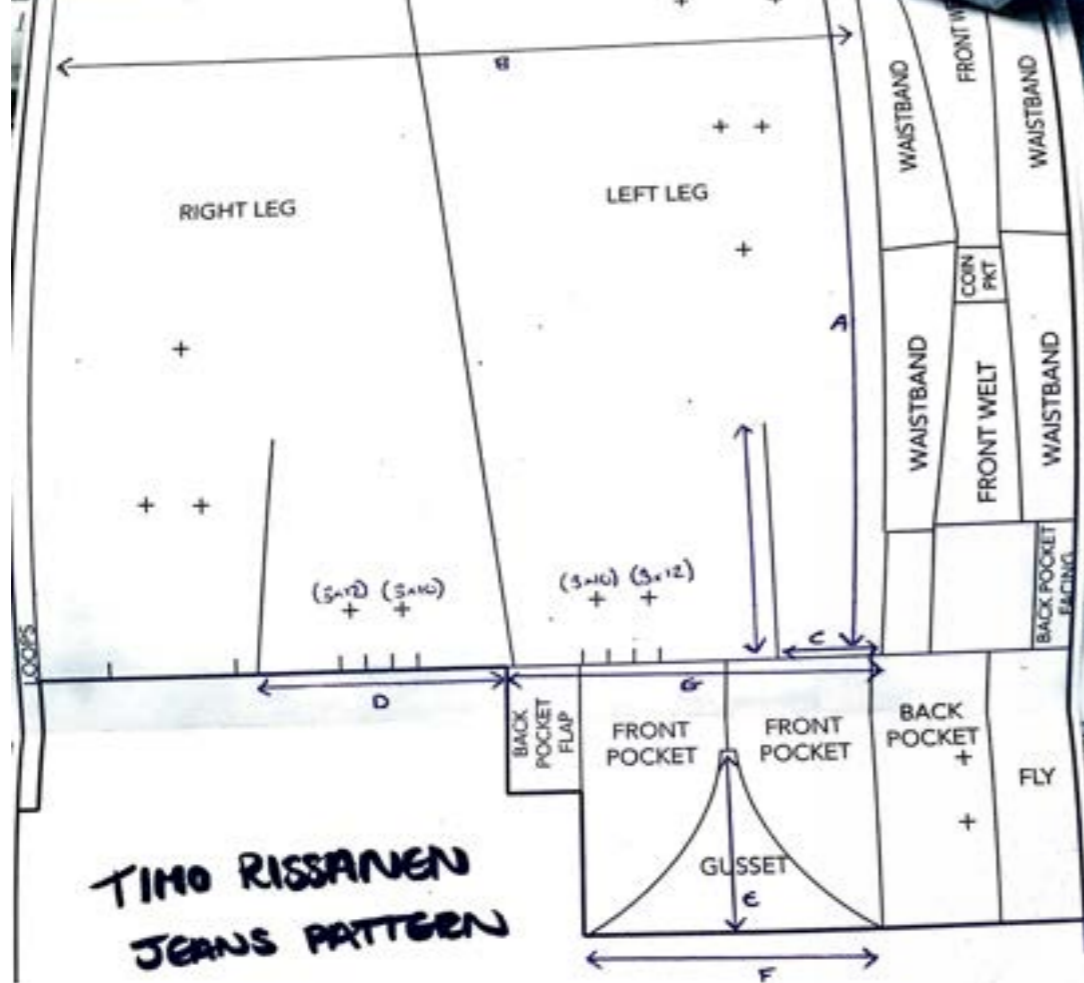


I AM USING TIES AS ALL VISIBLE CLOSURES, MADE FROM THE SAME SELF MATERIAL, THIS WOULD SPEED UP THE RECYCLING OF A GARMENT AS HARDWARE CLOSURES WOULD NEED TO BE TAKEN OFF. WHERE BUTTONS ARE BEING USED THEY WILL BE OF NATURAL MATERIAL.

USING COMMON PATTERN SHAPES IN UNUSUAL PLACEMENTS, CONTINUE TRADITIONAL PATTERN CUTTING THOUGHT PROCESSES BUT PUSHES COMPREHENSION OF GARMENT DETAILS TO SUBSTITUTE WHAT IS MOVED.







**TIMO RISSANEN  
JEANS PATTERN**

A - Trouser length  
= 105

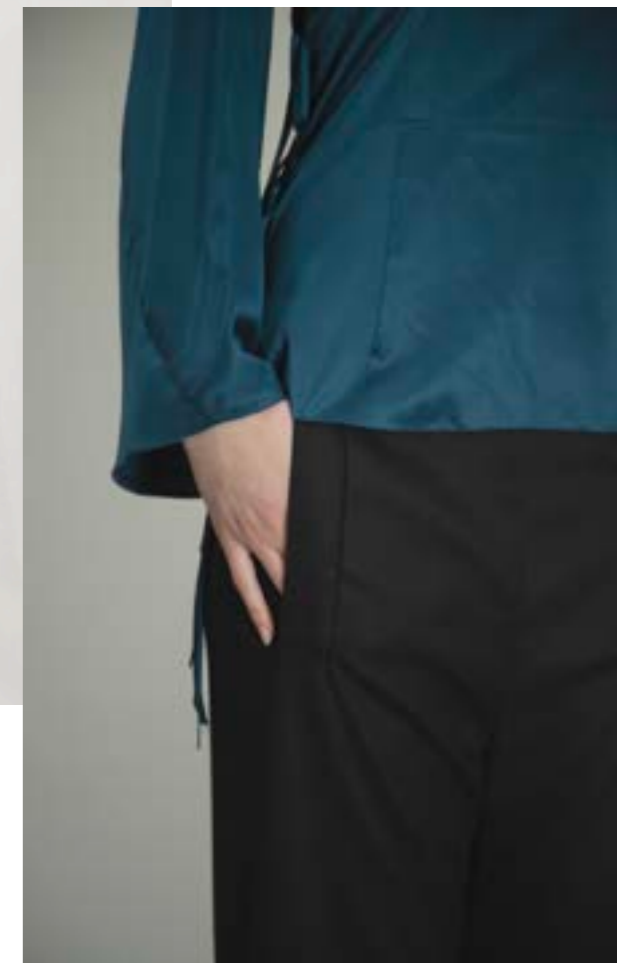
B - WIDTH (FABRIC WIDTH ?)  
= (150)

C -

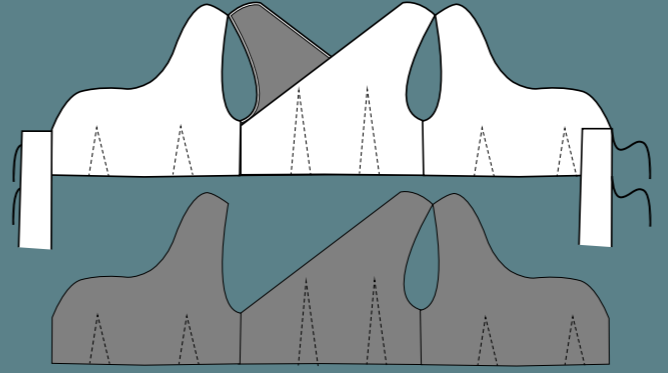
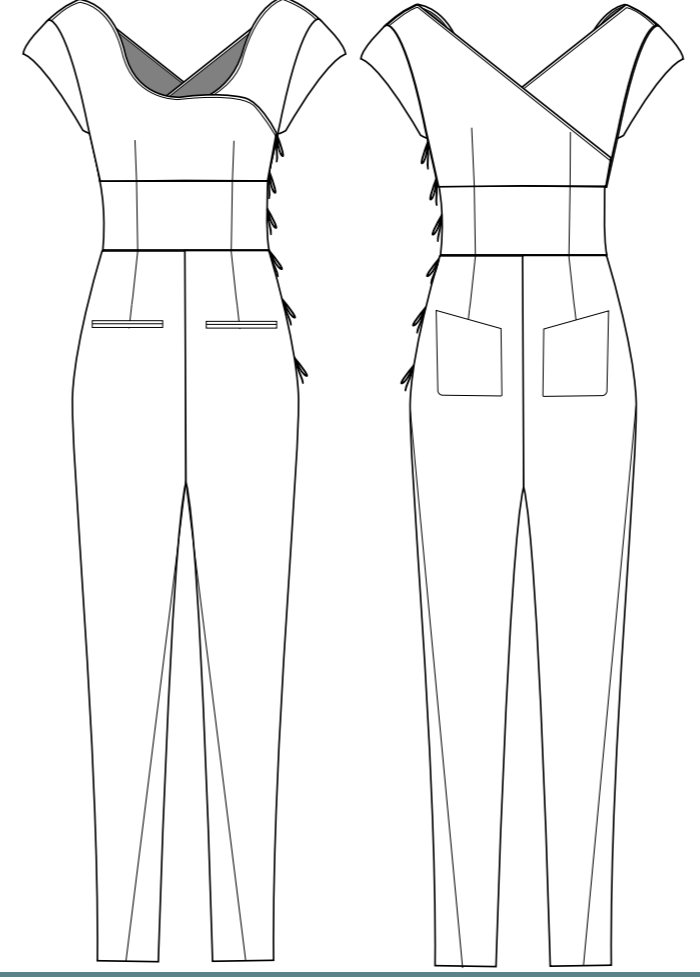
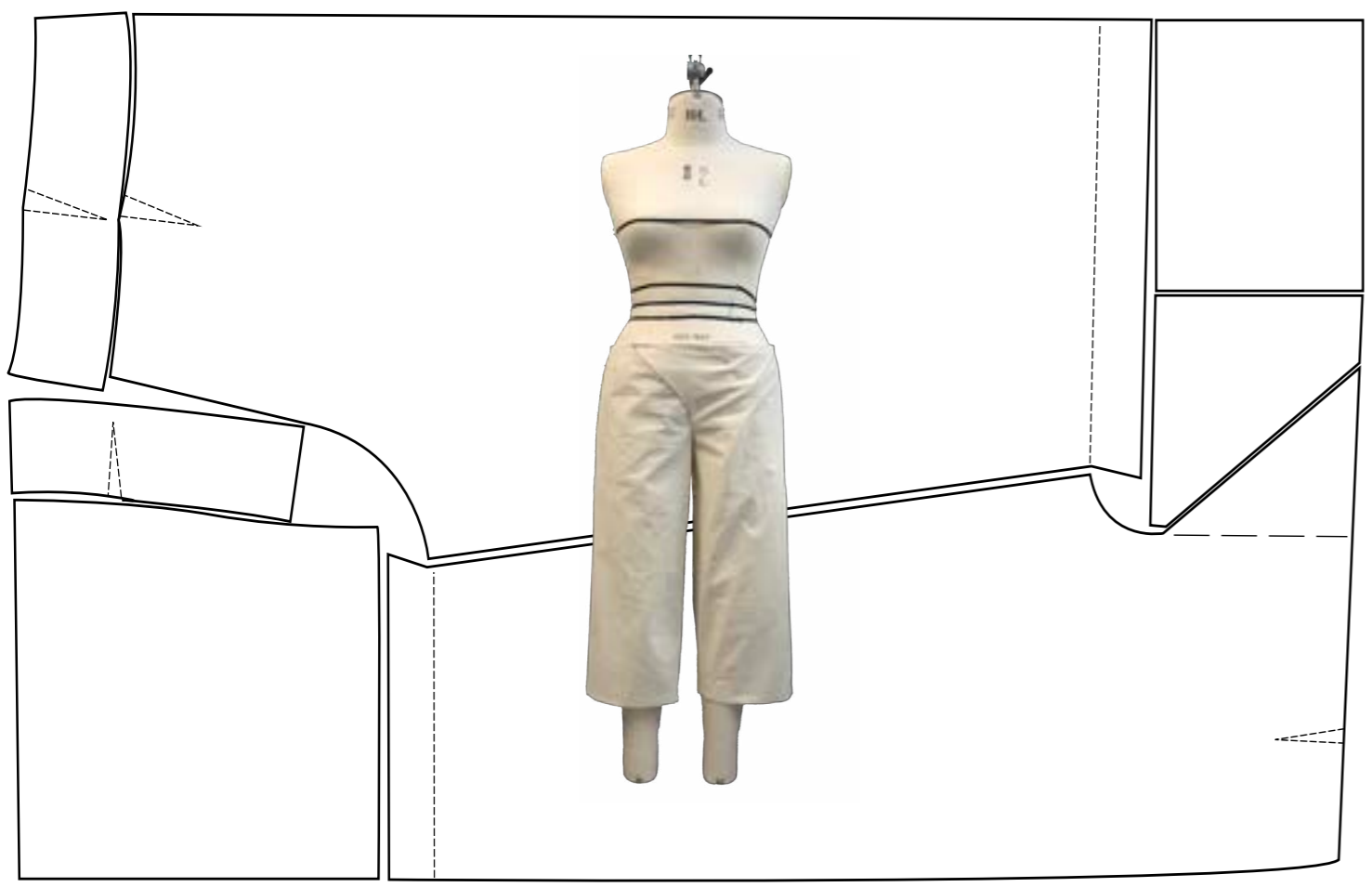
D -

E - SEAT LENGTH  
= 35 - 38

F - INSIDE LEG SEAM OF  
GUSSET  
= 40









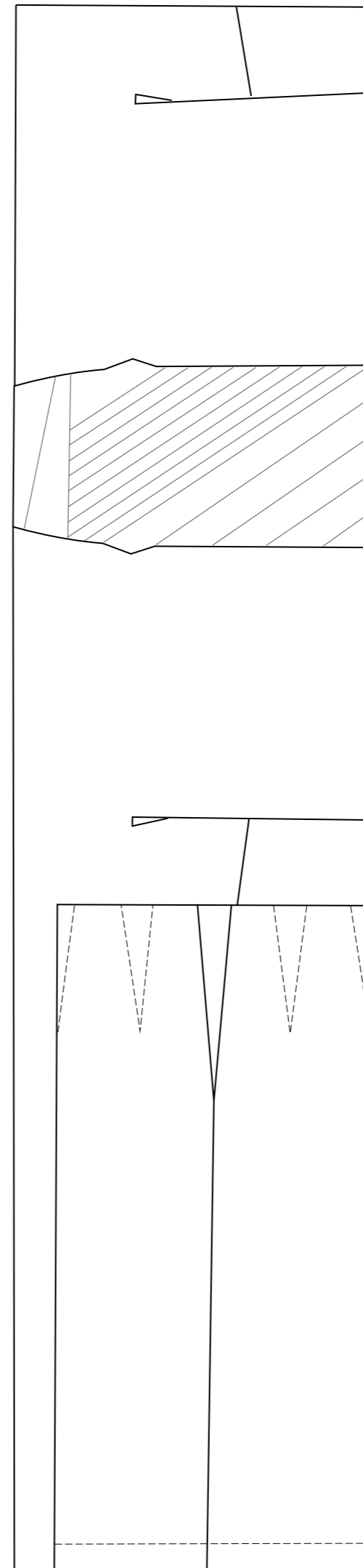
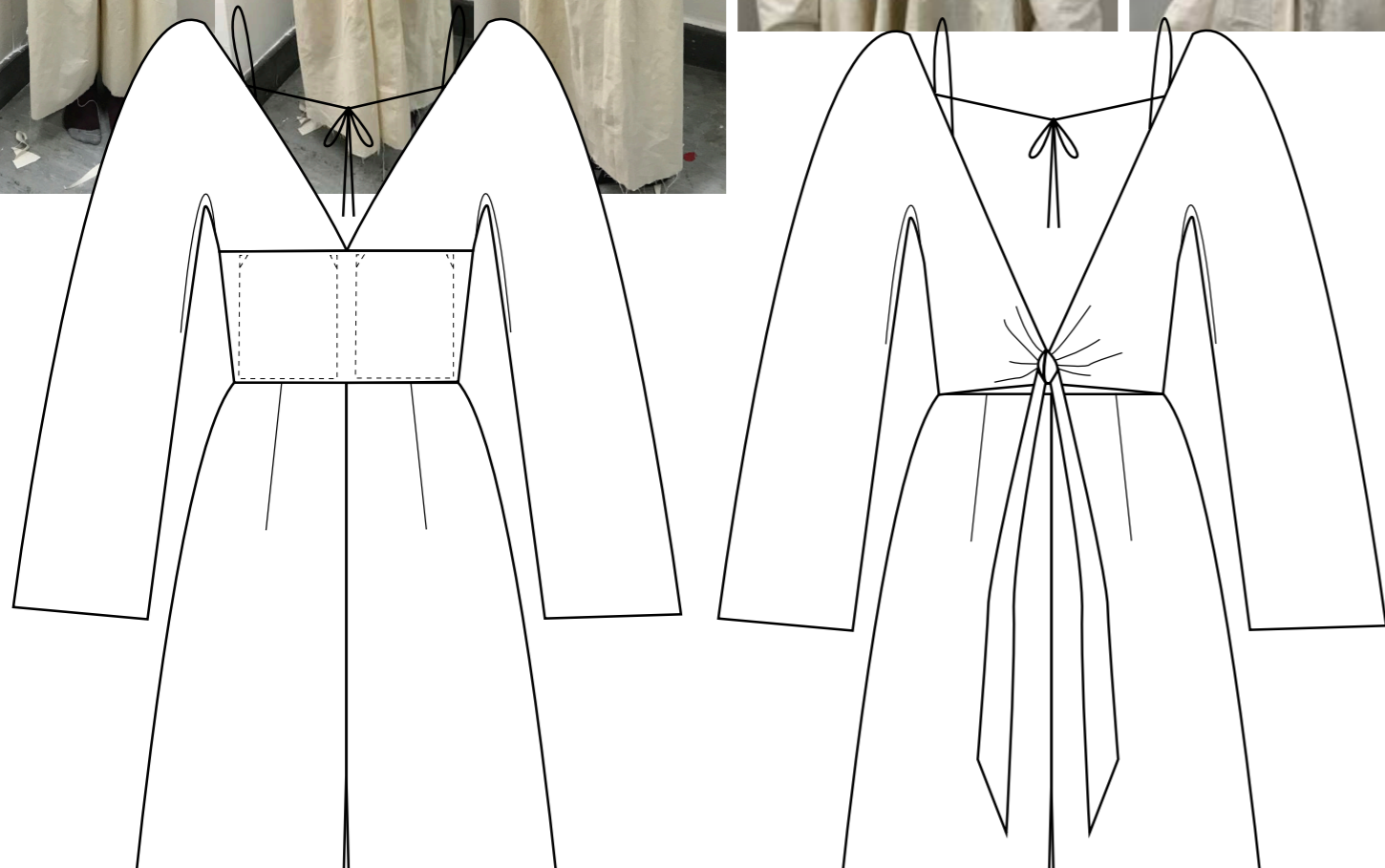
NOV 25 PORTFOLIO NOTES:  
-SEAMS IN FABRIC!  
-TELL THE COLOUR STORY THROUGH IMAGES AND  
MAYBE DRAW EXTENDED LINES OF KEY COLOURS OUT  
OF THE IMAGE.  
SEEK OUT LAY MOT  
ON LABELS  
OR OTHER  
DETAILS







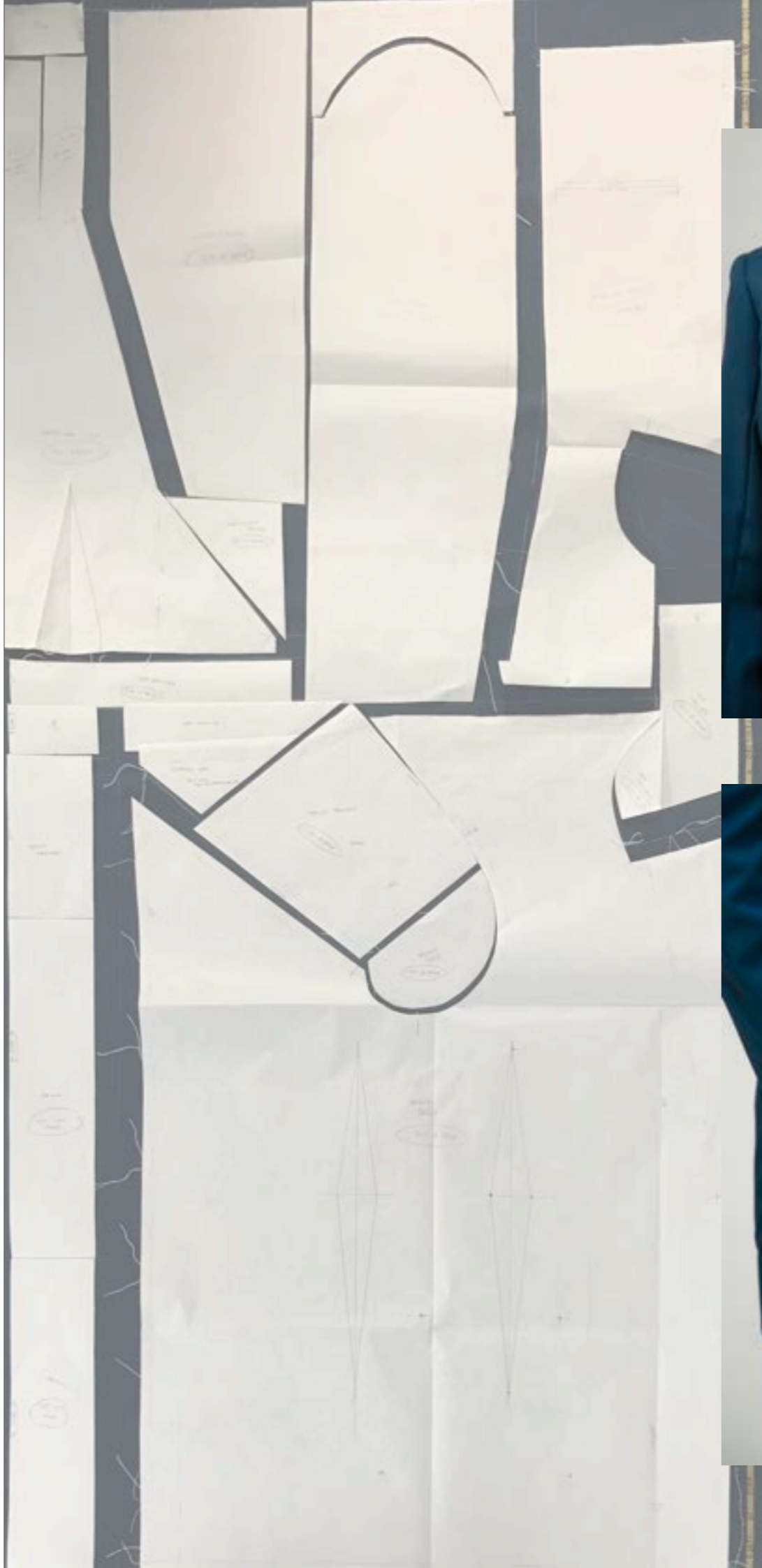
EXPLORING TWISTED FABRIC GAVE INTO ZERO-WASTE PATTERNS THAT SIT AROUND THE BODY AS EACH EDGE JOINS ANOTHER, CREATING CYLINDERS OVER LIMBS.



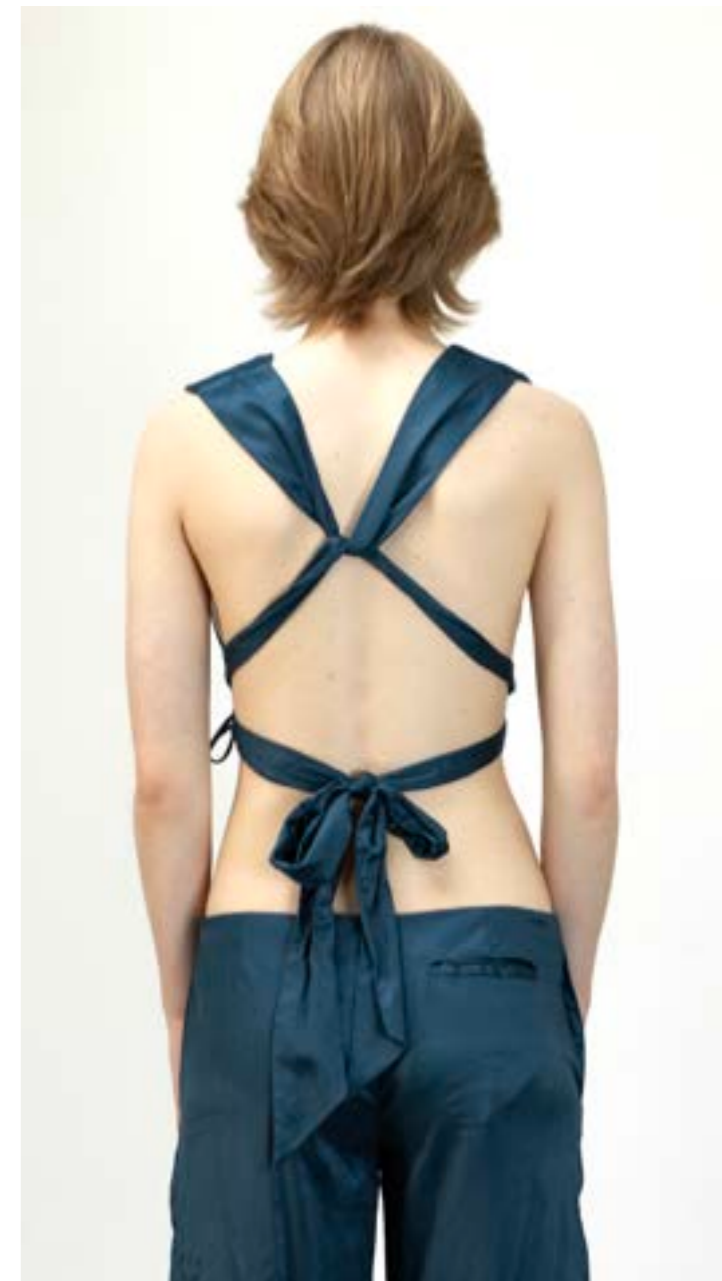
CHOOSING FABRICS MADE OF ONE SINGLE FIBRE WILL SUPPORT THE FUTURE RECYCLING OF THE GARMENTS, SINGLE FIBRE CONTENTS ARE EASIER TO BREAK DOWN AND RE-USE AS NEW YARN.

CHOOSING DEAD STOCK FABRICS REDUCES MASS WASTAGE OF FABRIC AND SUPPORTS SMALLER SHOPS.





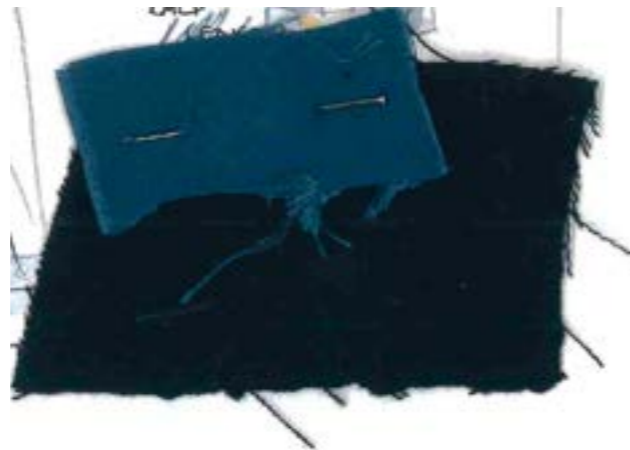




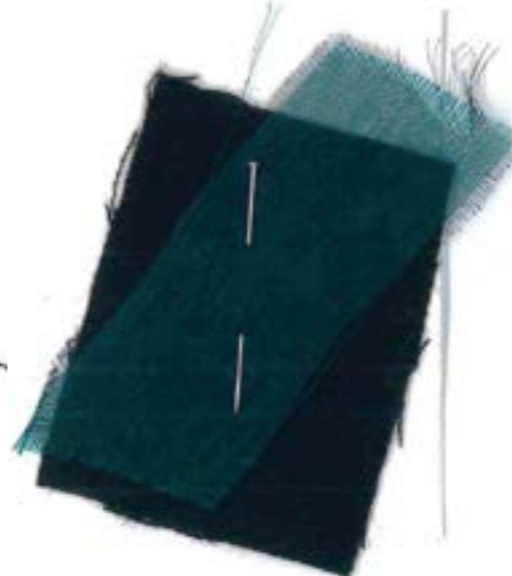
100% COTTON - WAXED AFTER DYED  
ULTRAMARINE  
LINING 100% COTTON - WAX RESISTANT



100% WOOL CREPE BLACK; DEAD  
STOCK FABRIC, UK TEXTILES,  
LONDON  
100% BAMBOO SILK PETROL

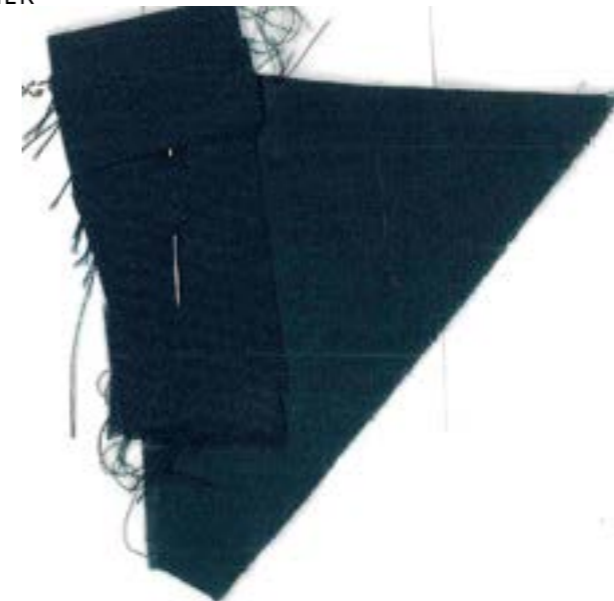


100% WOOL VERY LIGHT COATING  
BLACK; DEAD STOCK FABRIC  
MISAN WEST, LONDON.  
LINING 100% RAYON KINGFISHER



100% SILK - DEAD STOCK PAUL SMITH  
TEAL  
LINING 100% RAYON KINGFISHER

100% WORSTED WOOL SEA BLUE  
LINING 100% BAMBOO SILK PETROL



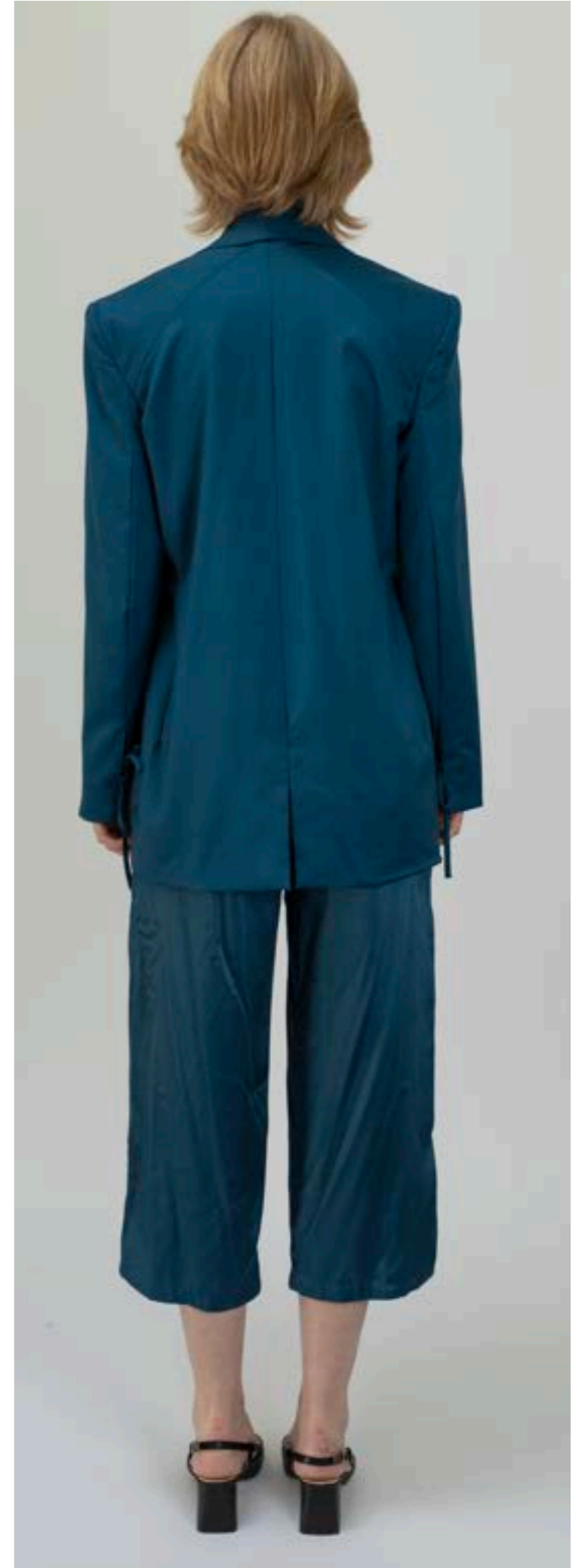


# TEAL CURRENTS





# SILK WAVES





# DIVER





# SALT TRENCH

