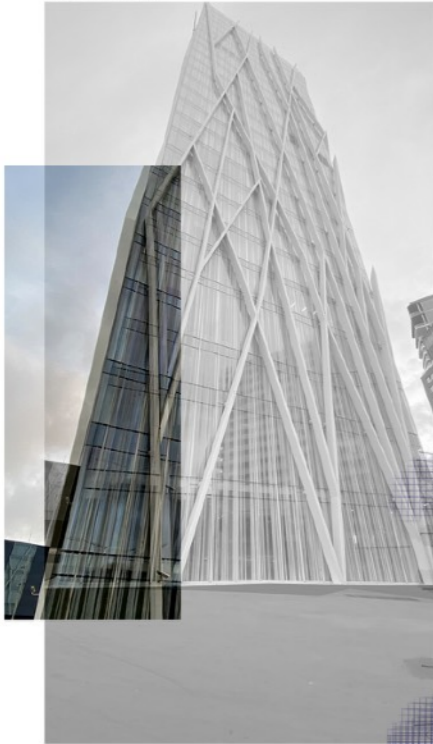


MAN VS TECHNOLOGY

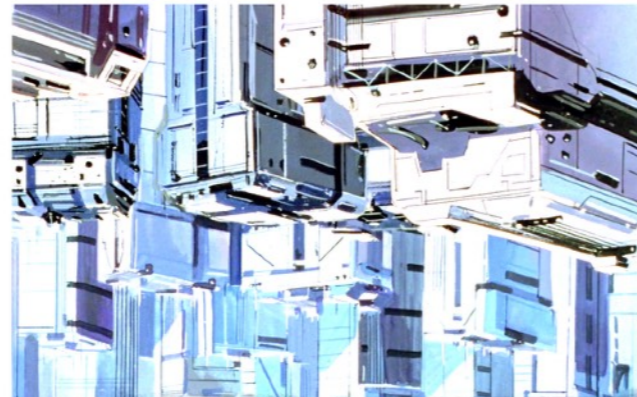
# CODE 3000

BY HADISA AHMAD

BARCELONA



NEON GENESIS EVANGELION



AI GENERATED MAZE



DUPLICATED



CHARACTER ILLUSTRATION



LONDON THE 30TH CENTURY ILLUSTRATION

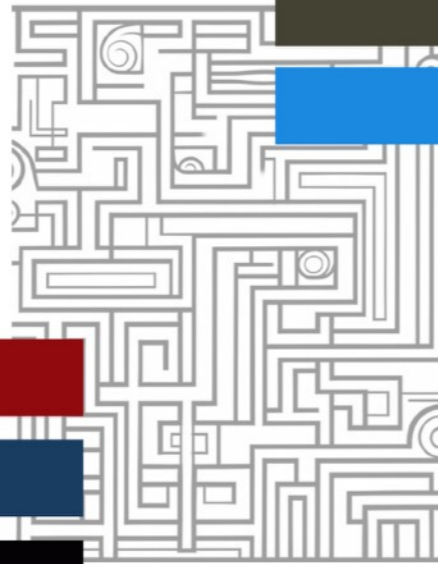
THE STORYLINE IS BASED ON THE POWER OF TECHNOLOGY CEATING VORTEXES WITH NO ESCAPE. MY VISUALS FOCUS ON A TEENAGE BOY WHO IS TRAPPED WITH NO ESCAPE IN THE MAZE, THERE IS NO EXIST. HIS VISON IS DISTURBED AND THE WORLD IS ALWAYS GLITCHING EITHER UPSIDE DOWN, DUPLICATED OR OFF CENTEED.

# CODE 3000

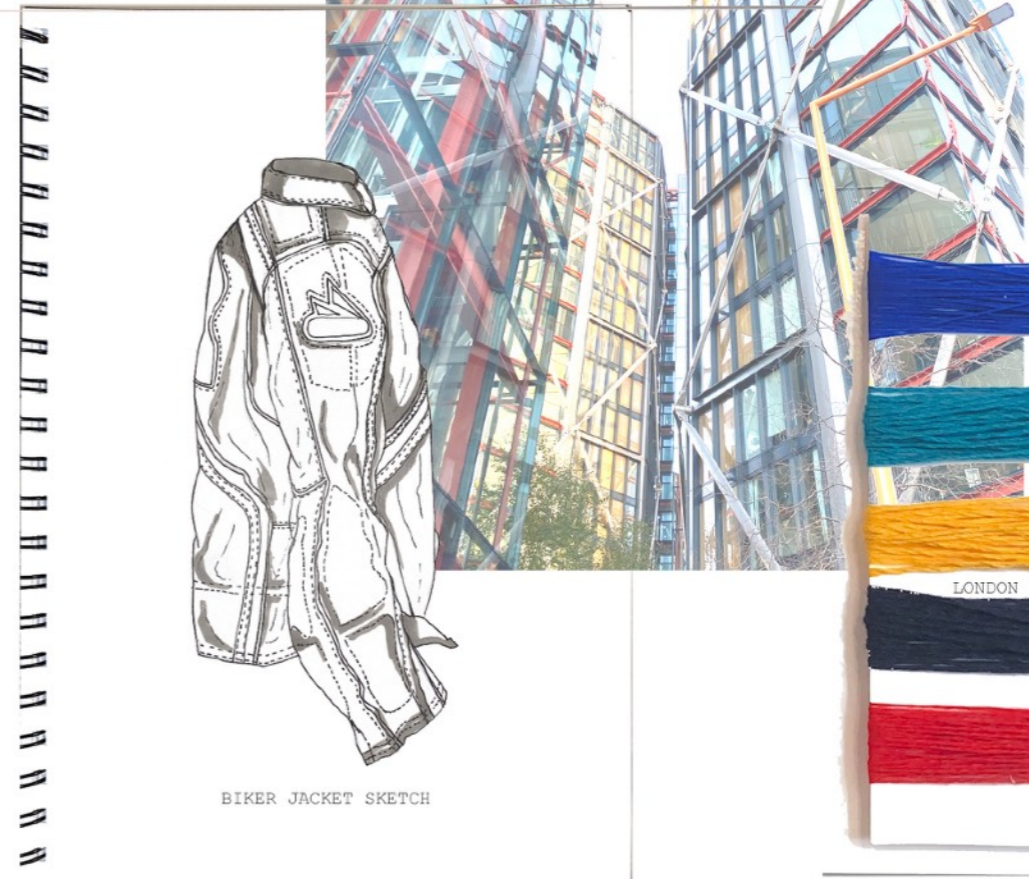
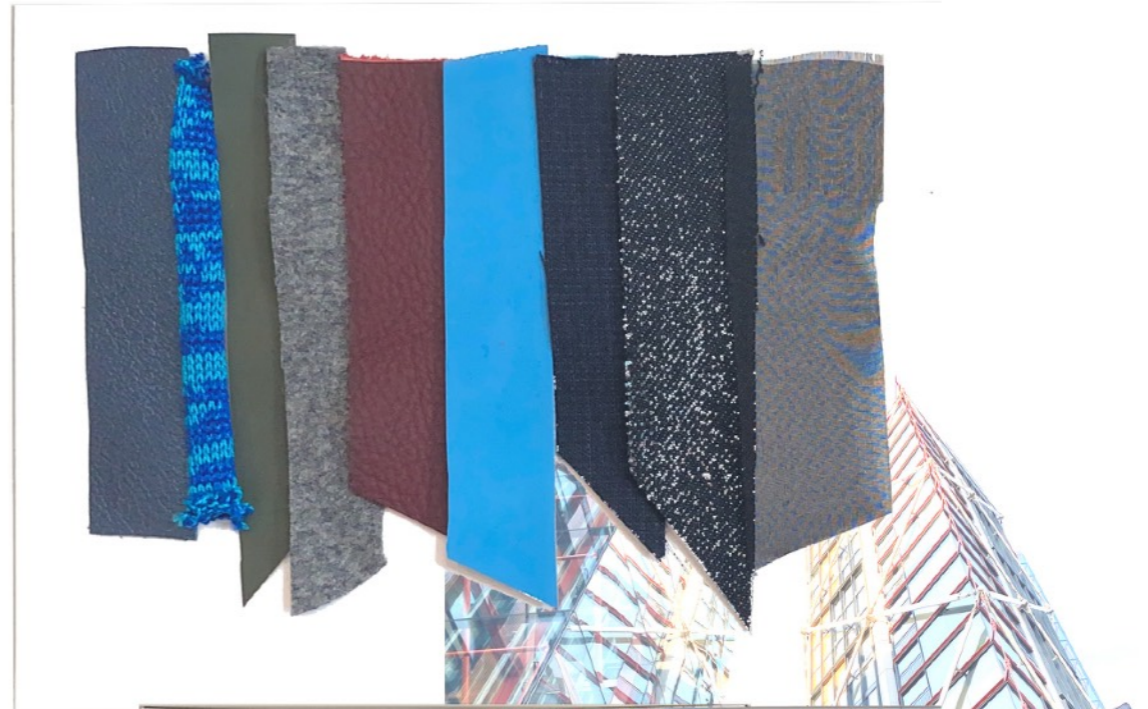


FILIPPO MARINETTI  
MODERN FUTURISM PAINTINGS

ALL FABRICS ARE  
SOURCED SUSTAINABLY.  
MOSTLY DEADSTOCKS AND  
NATURAL LEATHER.



- NATURAL SILK ORGANZA
- COW HIDE LEATHER
- NAPA SKIN LEATHER
- SELVEDGE DENIM
- PVC - TUP
- WATERPROOF RIPSTOCK
- PLAINED LEATHER
- CASHMERE YARNS
- LYCRA
- JERSEY
- 100% COTTON
- CASHMERE WOOL



BIKER JACKET SKETCH



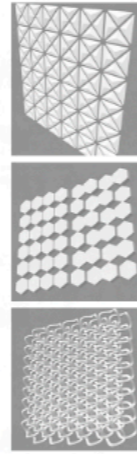
CODE 3000



DRAPING WITH SAMPLES CONSIDERING THE SHAPE AND PLACEMENT.



COLLAPSE INTO FLAT



FUSION 360 EXPERIMENTS LOOKING AT 3D STRUCTURAL ELEMENTS WITHIN GARMENTS.

3D PRINTING

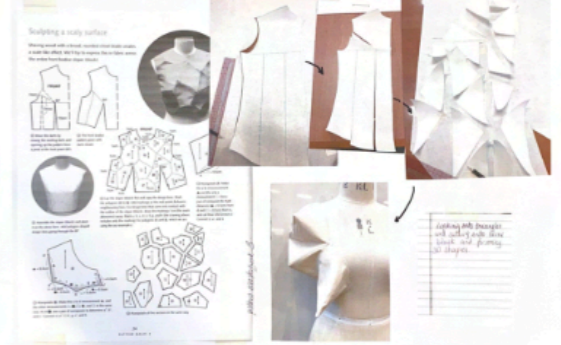


*paper fitting draped by the sample, suggests that fold line be elegant.*

ISSEY MIYAKE DESIGN MUSEUM

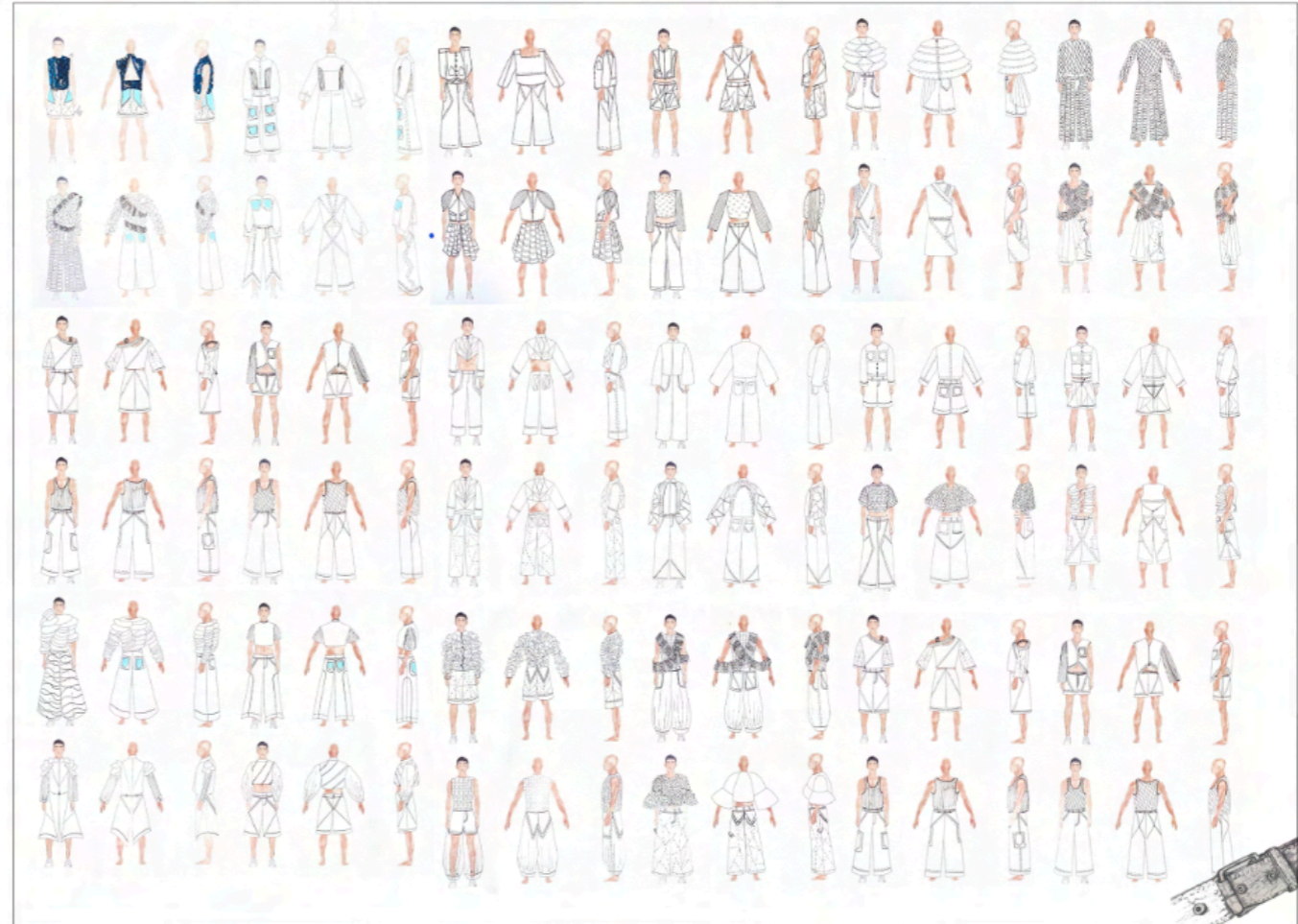


PATTERN MAGIC BOOK 3



ISSEY MIYAKE THE PUBLICATION BOOK

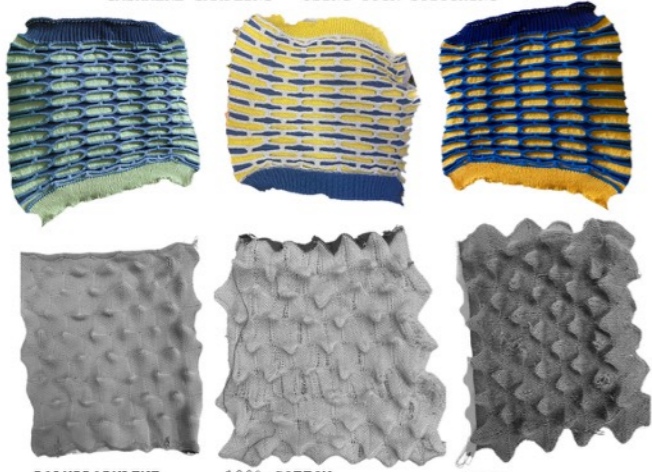
DESIGN DEVELOPMENT



LEATHER BELT PENCIL DRAWING

CODE 3000

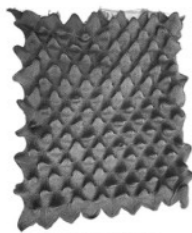
CASHMERE SAMPLING - USING TUCK STITCHING



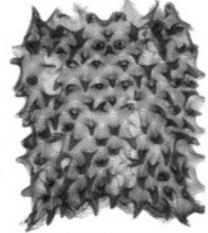
POLYPROPYLENE ONLY

100% COTTON

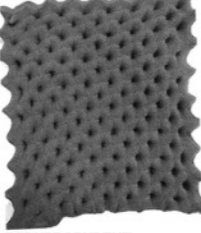
WOOL



POLYPROPYLENE ONLY WITH MONOFILMENT



MONOFILMENT ONLY



POLYPROPYLENE ONLY WITH MONOFILMENT - REVERSE

JERSEY TOILE FITTINGS



PANEL DRAPPING

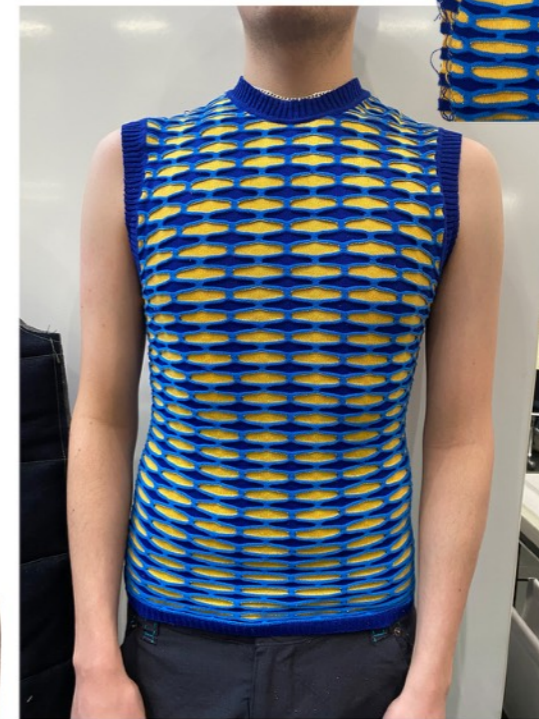


SANDWICH TRIMS

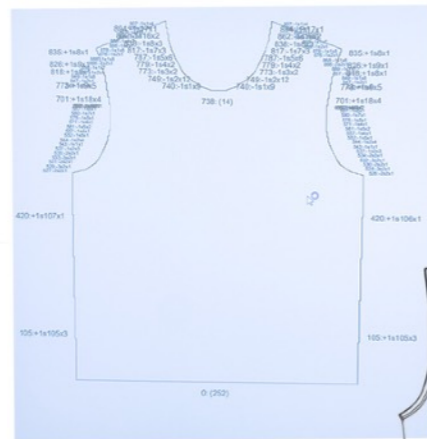


VEST FOR LOOK 1

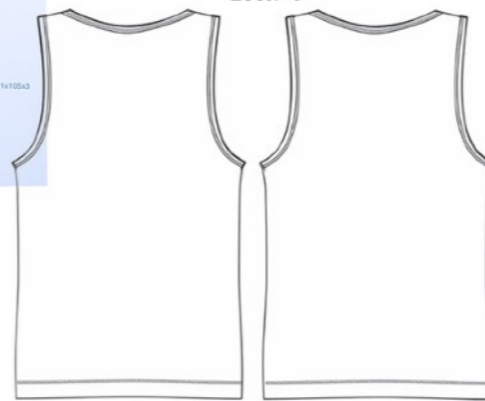
VEST FOR LOOK 2



FULLY LINKED VEST



UNDER LAYER FOR LOOK 4



ILLUSTRATIONS



KNIT



CODE 3222

# LOOK 1

## 'THE GLITCH'

### SUSTAINABLE PATTERN CUTTING

LEATHER STRIPS ARE CUT INTO SQUARES WHICH ARE JOINED TOGETHER.



EACH SQUARE IS CREASED WITH HEAT, THE LEATHER HOLDS THE SHAPE FORMED BY THE CREASES.



FITTINGS

BRAND: CODE 3000	DESIGNER: HADISA A	DESCRIPTION: MENS LEATHER JACKET
SEASON: F/W 2024	DATE: DECEMBER 23	MAIN FABRIC: 100% WIDE LEATHER
STYLE: 3D LEATHER JACKET	STYLE NO: HA202	SIZE RANGE & (SAMPLE SIZE): XS S (M) L

FRONT	BACK

OPERATION
A ONE FURROW COLLAR WITH SINGLE STITCH (1/2" AWAY FROM EDGE).
B 1CM BUTTON STAND ON A METAL ZIP DOUBLE BREAST.
C 30 LEATHER TRIANGLES ALL SAME SIDE.
D SINGLE STITCH ON THE HEM (1CM ABOVE THE HEM LINE).
E DOUBLE STITCH WITH 1CM GAP ON THE COFFS.



FRONT

SIDE

BACK



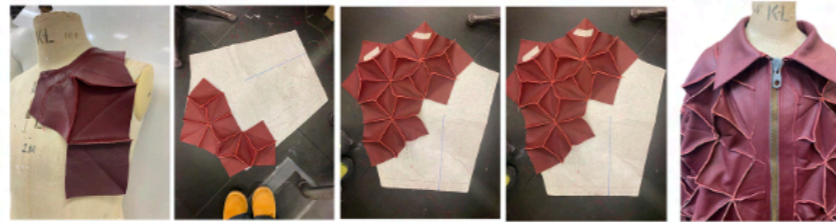
POCKET  
DETAILING



INSPIRED BY 3D  
ARCHITECTURE



COLLAR



BRAND: CODE 3000	DESIGNER: HADISA A	DESCRIPTION: MENS SHORTS
SEASON: F/W 2024	DATE: DECEMBER 23	MAIN FABRIC: WATERPROOF RIPSTOP
STYLE: OVERSIZED JORTS	STYLE NO: HA201	SIZE RANGE & (SAMPLE SIZE): S (M) L XL

FRONT	BACK

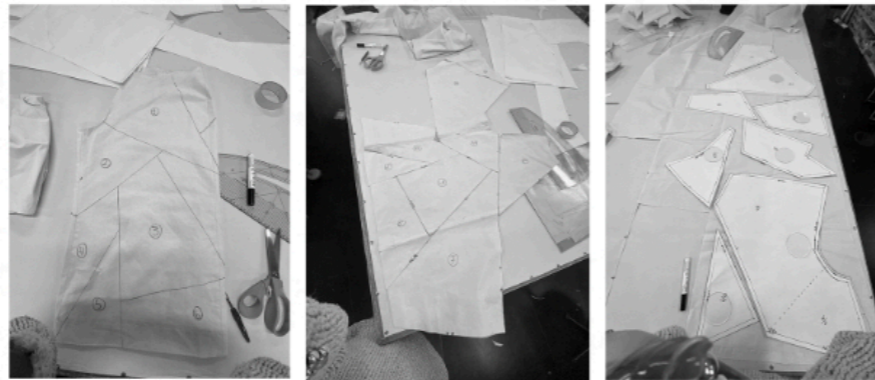
OPERATION
A STAINLESS STEEL SILVER METAL CLASP.
B SADDLE STITCH - MADERIA BURMILANA THREAD.
C HIDDEN POCKET ALONG THE SEAM.
D SHORT HEM - STITCH LINE 1/2" FROM THE EDGE.
E ENGINEERED SEAMS THAT CONNECT THAT THE BACK.
F DOUBLE POCKET WITH CORING.



FINISHED JORTS.

PROCESS

USING WATERPROOF DENIM, TAPING THE SEAMS AND CHANGING SHAPE.



ENGINEERED PATTERN CUTTING TO REMOVE THE INNER AND OUTER SEAM FOR FLEXIBILITY

# CODE 3000

# LOOK 2

'IN REVERSE'

MODEL FITTINGS

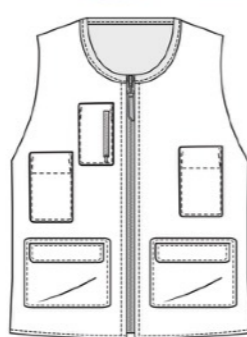


FULLY FUNCTIONAL  
JEANS SIDE POCKET

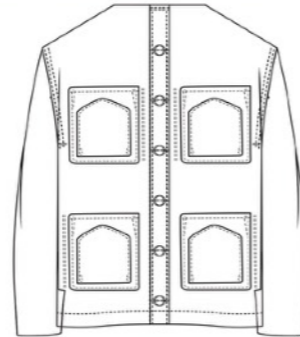


INSIDE

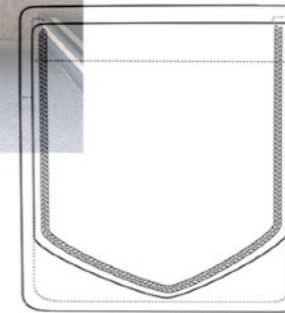
FRONT



INSIDE OF THE  
JACKET



OUTSIDE OF THE  
JACKET



POCKET DETAILING



THE VISION IS  
UPSIDE DOWN.



INSIDE POCKET DETAILS



UPSIDE DOWN JEANS  
WITH FUNCTIONAL 4 POCKETS

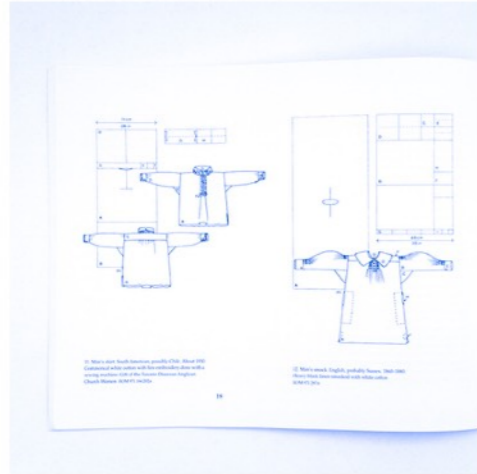


CODE 3000

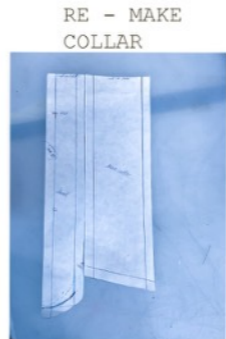
# LOOK 3

'FAINTEST NOTION'

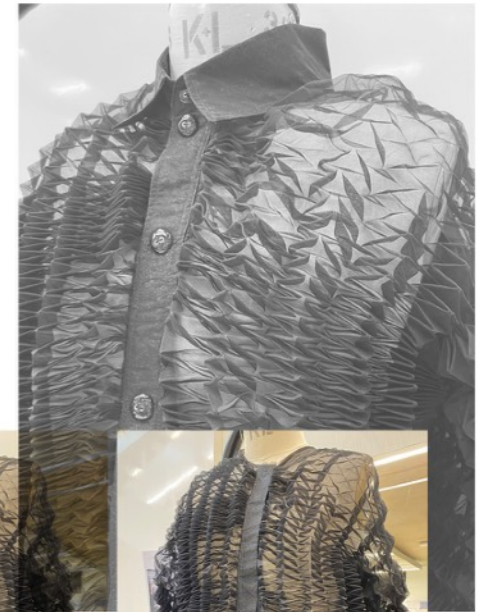
SUSTAINABLE FASHION BOOK



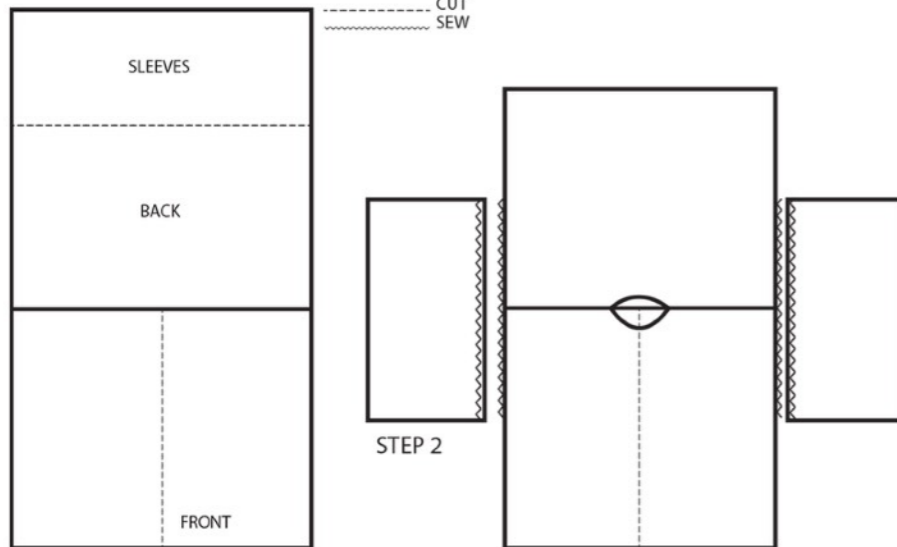
INITIAL SHAPE



RE - MAKE COLLAR



PROCESS



STEP 1  
ZERO WASTE PATTEN CUTTING.



PICTURES BY @AIMEEELIZAHEVERAN

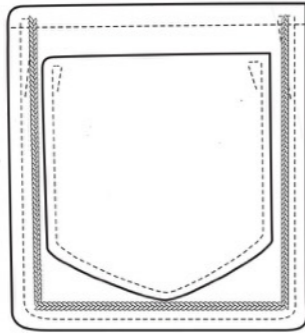


# CODE 3222

CUFFS  
SHIMA CASHMERE KNIT



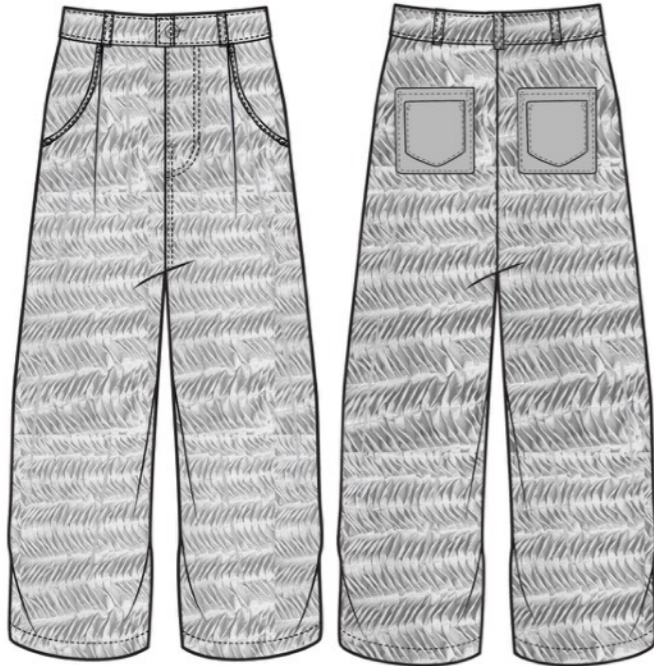
BACK POCKET



INITIAL TOILE



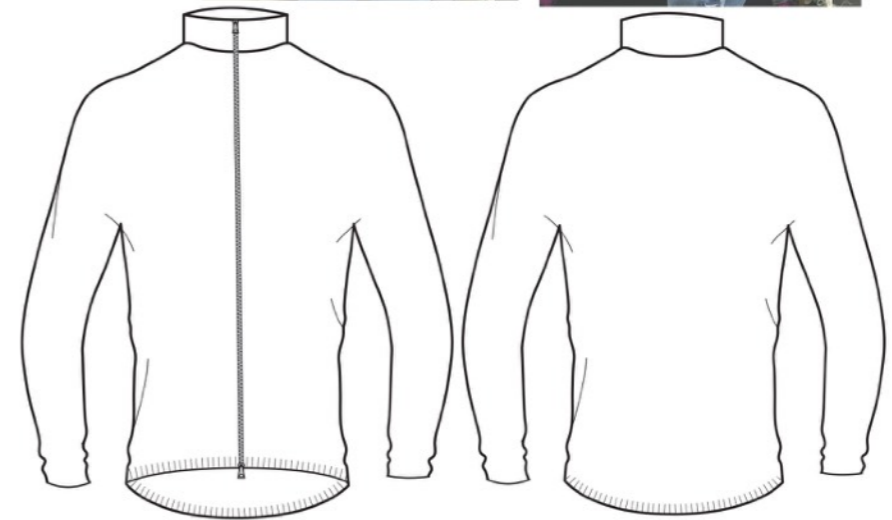
FINISHED JERSEY TOP



PIN TUCK TROUSERS



FINAL FITTING



ILLUSTRATIONS

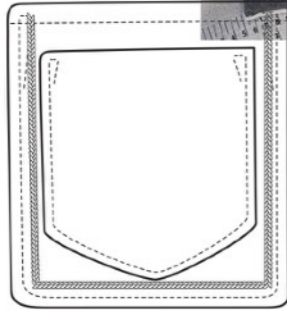
**CODE 3222**



FLY ZIP AND BINDING



BACK POCKETS



LEATHER AND WOOL EMBELISHMENT



FRONT



BACK



FRONT



BACK

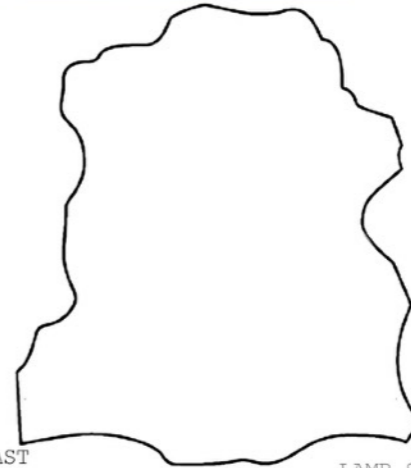
WITHOUT THE WAISTBAND



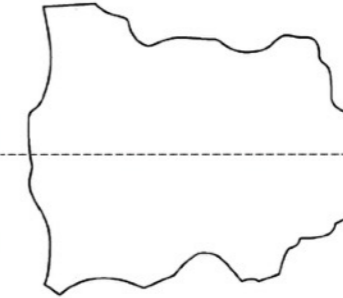
NEON GENESIS EVANGELION



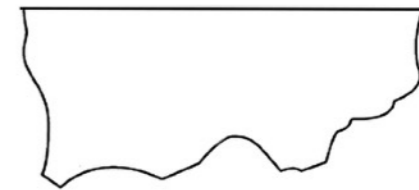
KEEPING THE ORIGINAL SHAPE OF THE SKIN TO CONTRAST THE NATURE VS MAN-MADE



LAMB SKIN SHAPE



CUT SKIRT USING ORIGINAL SHAPE OF THE NAPA LAMB



CUTTING IN HALF



SKIRT ON THE TROUSERS

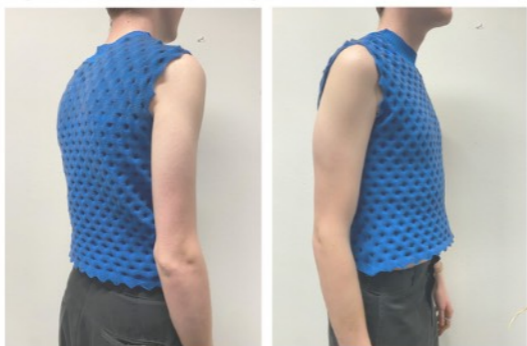
# LOOK 4

'OPTIC ATROPHY'

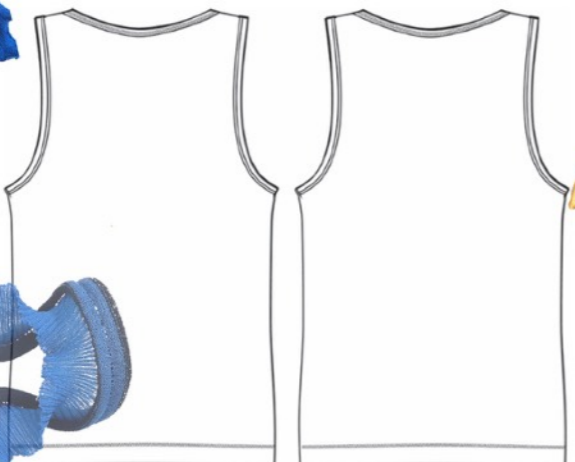
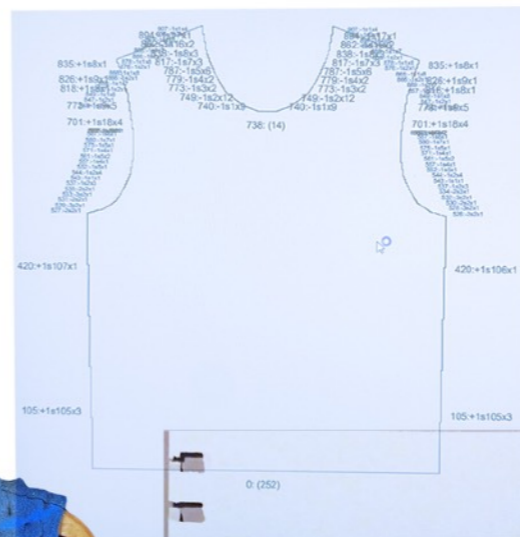
# CODE 3222



FULLY LINKED VEST

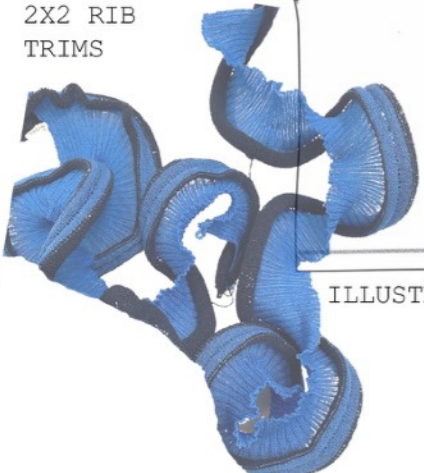


DESIGN AND KNIT

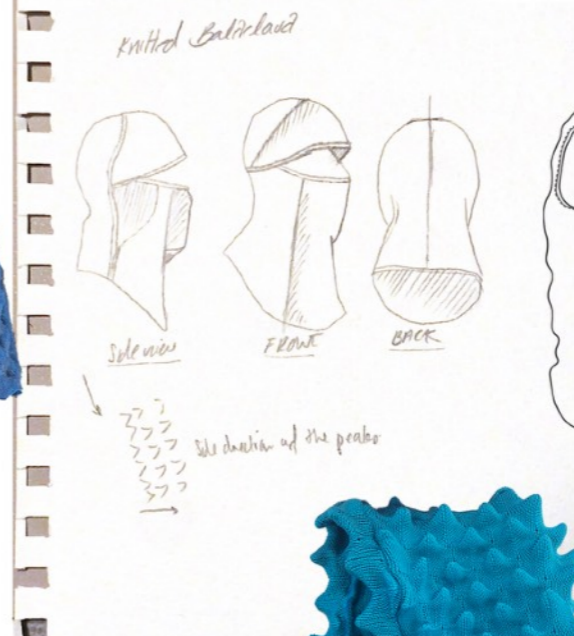


ILLUSTRATIONS

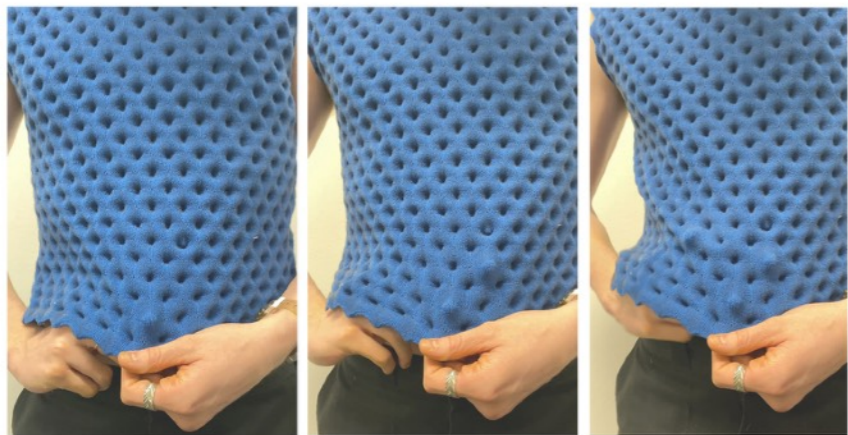
2X2 RIB TRIMS



FULLY KNITTED AND LINKED



POLYPROPYLENE



POKING OUT THE PEAKS



CUT AND SAW - DUE TO THE RACKING



SHIMA KNITTED BALACLAVA - TRIM LINKED

ILLUSTRATIONS

CODE 3222



3 TUBES



5 TUBES  
2 CAN DISCONNECTED



7 TUBES  
4 ARE DISCONNECTED



SIDE VIEW



BACK VIEW

DYE PROCESS

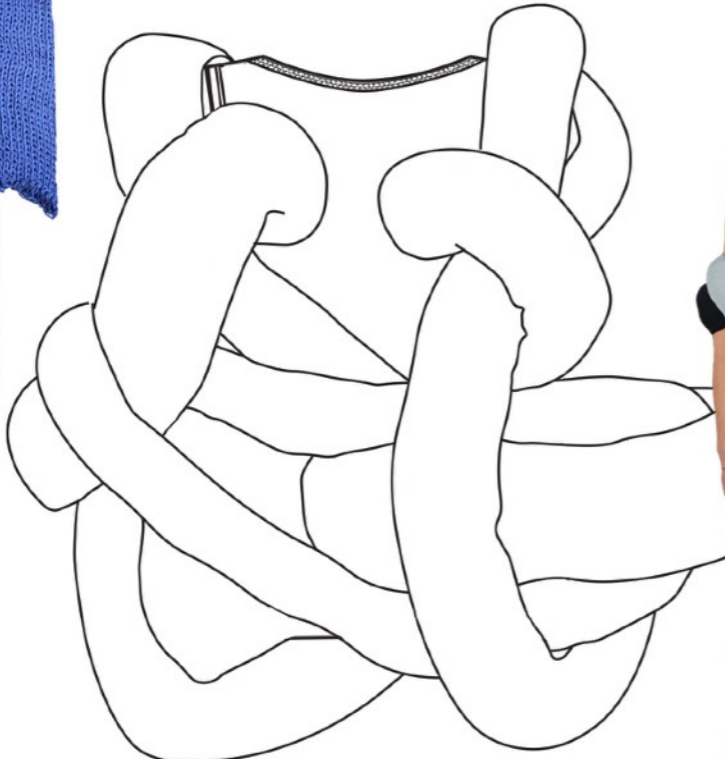


FINAL ATTEMPT



FIRST ATTEMPT  
DYEING

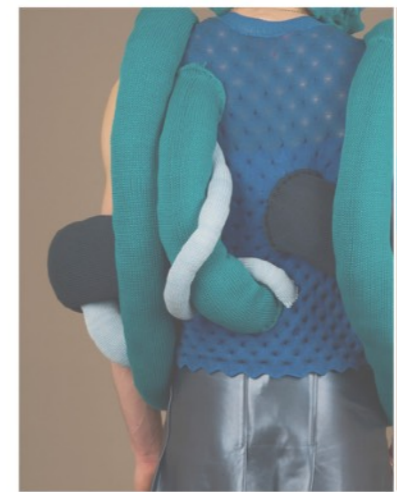
ORIGINAL COLOUR



ILLUSTRATION



100% SUSTAINABLE  
RECYCLED COTTON



CLOSE UP OF THE BACK

CODE 3222



**CODE 3222**



PHOTOS BY @COM.PILED

CODE 3222



PHOTOS BY @COM.PILED

CODE 3000