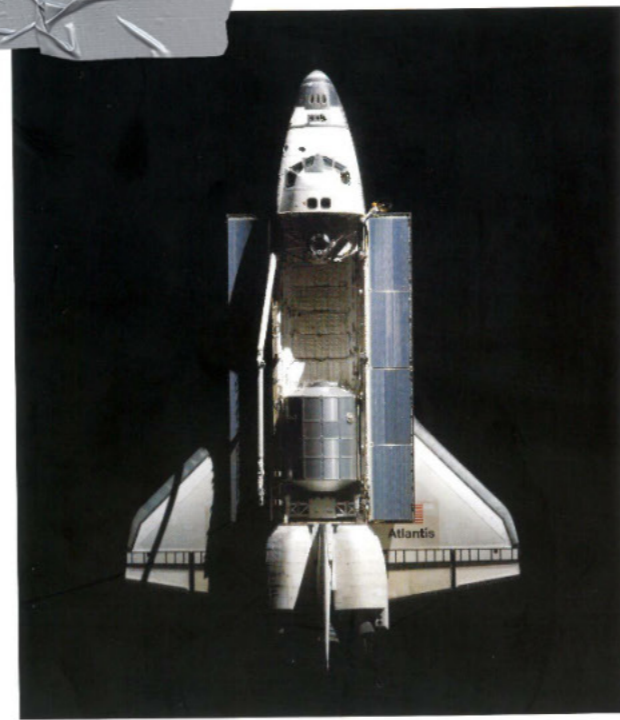


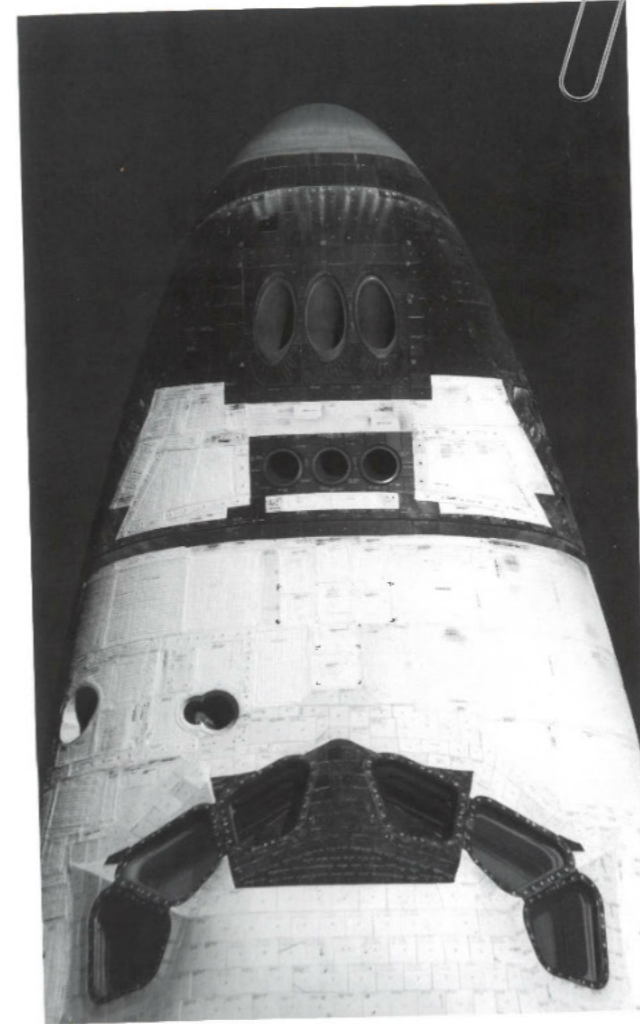
MISSION GV000-24

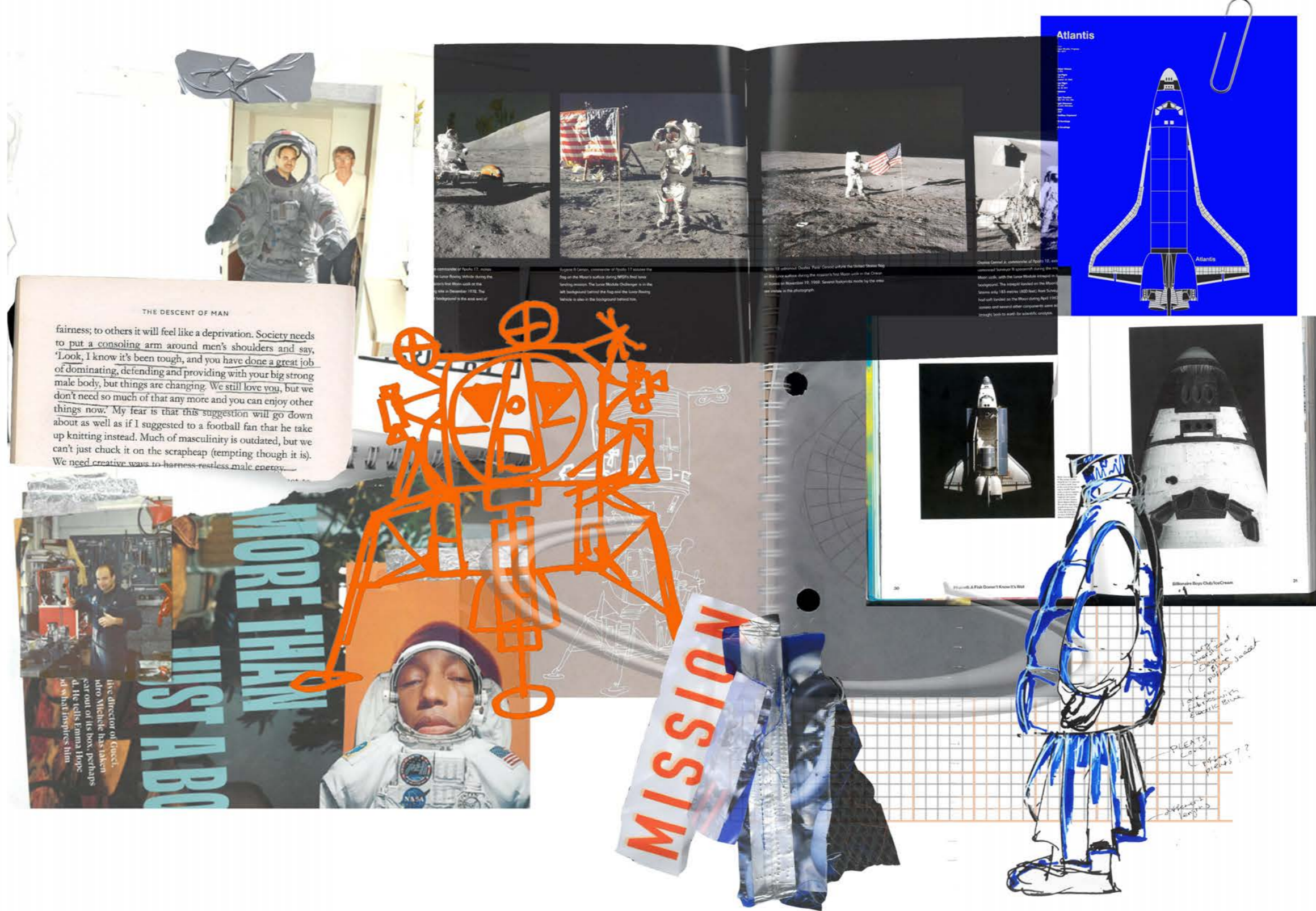
LAUNCHED.MANCHESTER METROPOLITAN UNIVERSITY
GEORGIA VALENTINE

GEORGIA.G.VALENTINE@STU.MMU.AC.UK



Head view and detail of the space shuttle Atlantis and its payload in Earth's orbit. Seen at the rear of the cargo bay is the Raffaello multi-purpose logistics module, packed with supplies and spare parts for the International Space Station. This scene was photographed by one of the ISS crewmembers in July 16, 2011, the last mission of NASA's space shuttle program.





I HAVE EXPERIENCE IN DESIGNING GARMENTS FOR POLAR EXPLORATION, WHICH TAUGHT ME HOW TO DESIGN FOR THE HARSHTEST ENVIRONMENTS ON THE PLANET. I HAVE BROUGHT THIS KNOWLEDGE INTO MY FINAL COLLECTION BY TAKING INSPIRATION FROM THE EQUIPMENT USED FOR SPACE EXPLORATION. THIS HAS CREATED A NEW WAY OF CROSSING THE BRIDGE BETWEEN FUNCTIONALITY AND CREATIVITY. I AM PASSIONATE ABOUT MAKING FUNCTIONAL CLOTHING ARTFUL WITHOUT LOSING THE INNOVATIONS THAT PROTECTS US FROM WEATHER ENVIRONMENTS.

THE MISSION GV000-24 COLLECTION IS DESIGNED FOR EXPLORATION OF URBAN AREAS AND THE SURROUNDING LANDSCAPES WHETHER THIS IS HAMPSTEAD HEATH IN LONDON OR THE PEAK DISTRICT NEAR MANCHESTER. WITH ADAPTABILITY AND HIGH QUALITY TECHNICAL FEATURES THESE GARMENTS ARE EXPLORING THE CITY OR EXPLORING THE HARSH ENGLISH WEATHER LANDSCAPES. TECHNICAL FEATURES INCLUDE, PRIMALOFT RECYCLED FIBRES FOR INSULATION, A JACKET THAT TURNS INTO A DUVET AND WATERPROOF SEAM SEALED SEAMS.



CONCEPT BOARD

MISSION GV000-24
MISSION GV000-24
MISSION GV000-24

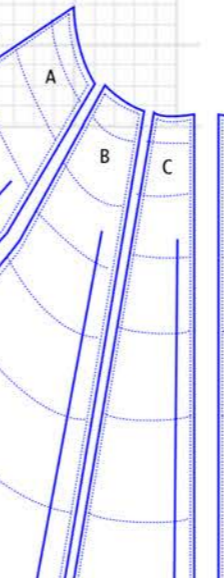
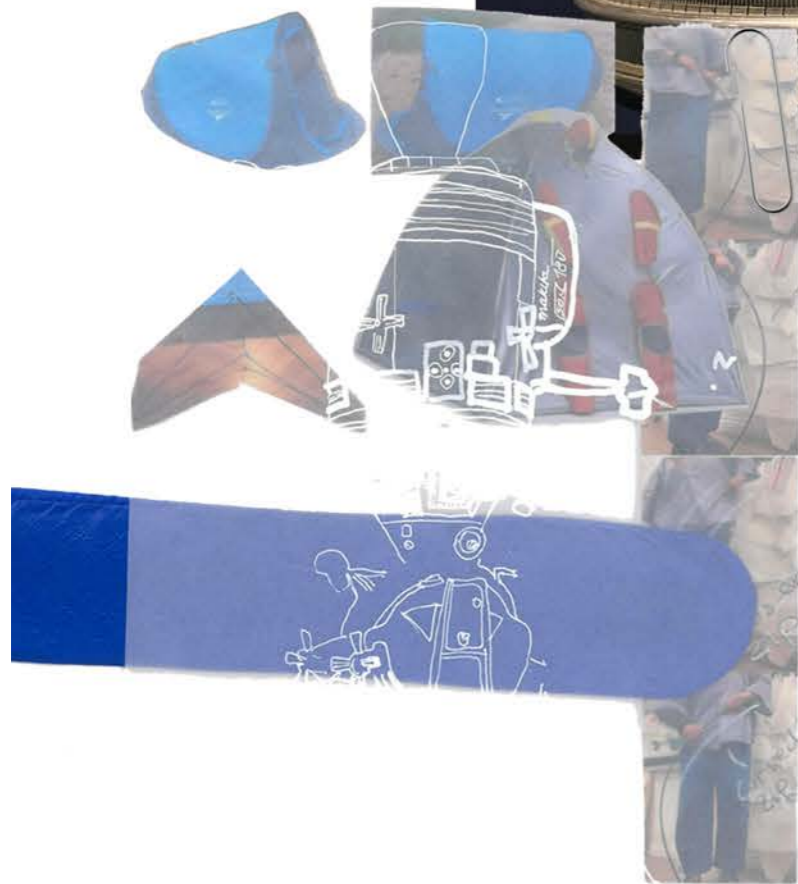
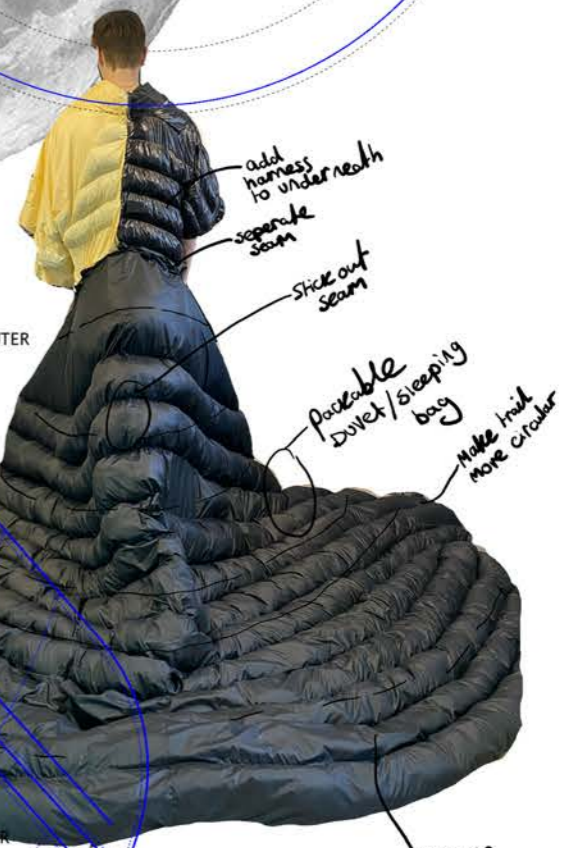
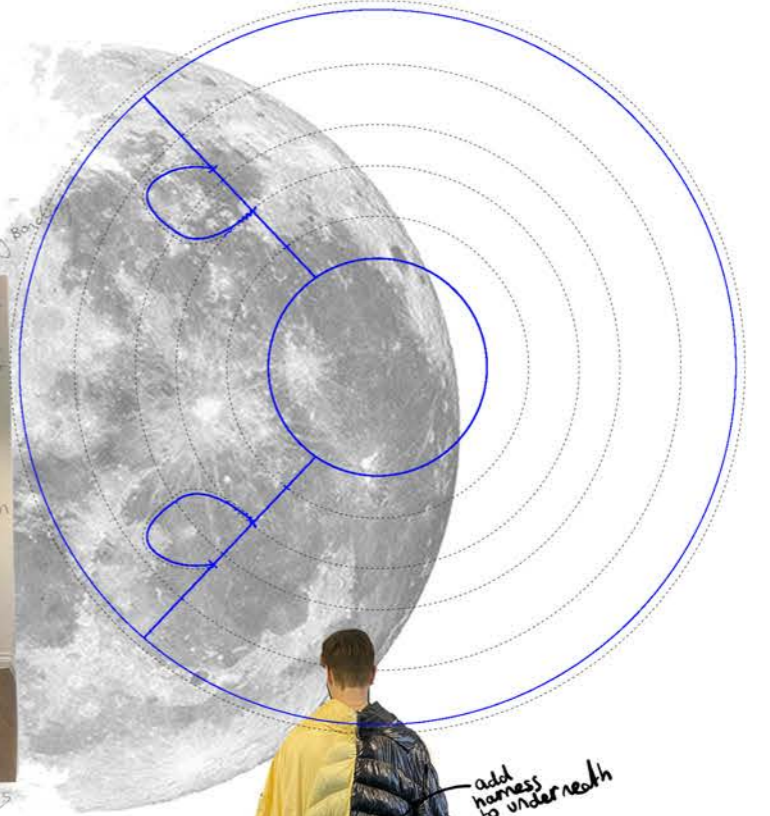


PrimaLoft® Insulation ThermoPlume®.

PRIMALOFT is a global leader in advanced science behind down alternative insulation. This fill is made entirely out of post-consumer recycled materials. It looks like down, feels like down, delivers high thermal performance and has proven water-repellent properties to provide a soft, compressible thermal output, even in wet conditions. PrimaLoft kindly donated 40kg of ThermoPlume® towards my final collection.

To research further into space exploration, I was lucky enough to have a call with Tess Morris-Patterson Founder & Managing Director of @Astro_Perform who also worked at the NASA research centre in California. She explained space suits and space shuttles are white and silver due to their ability to reflect light which allows for body temperature control due to the temperature in space changing consistently. This informed my colour palette by using colours like silver that regulates the body temperature. Orange space suits are also used for astronauts that are landing back on earth so they are easy to find.

COLOUR + FABRIC BOARD



IMG_0438.JPG

IMG_0450.JPG

IMG_0493.JPG

IMG_0509.JPG

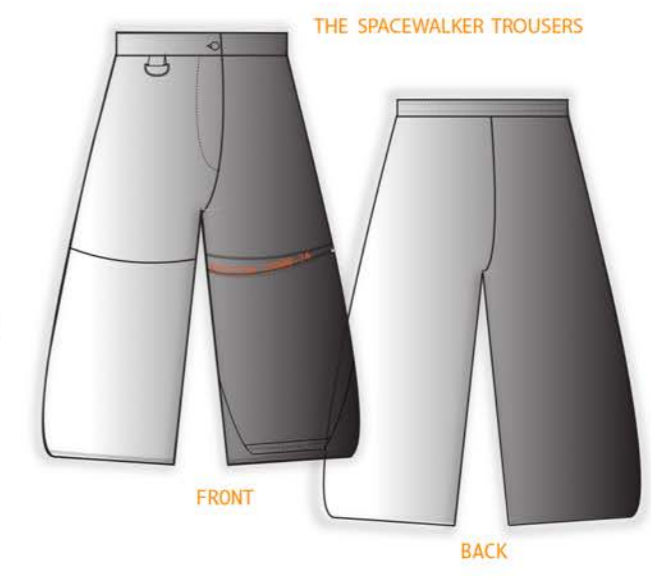
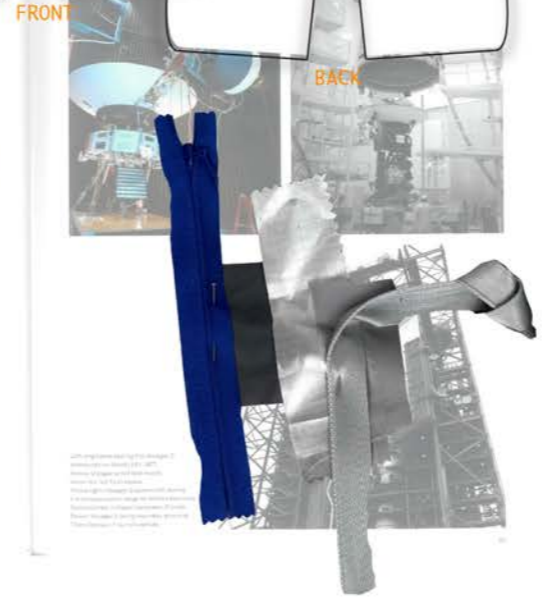
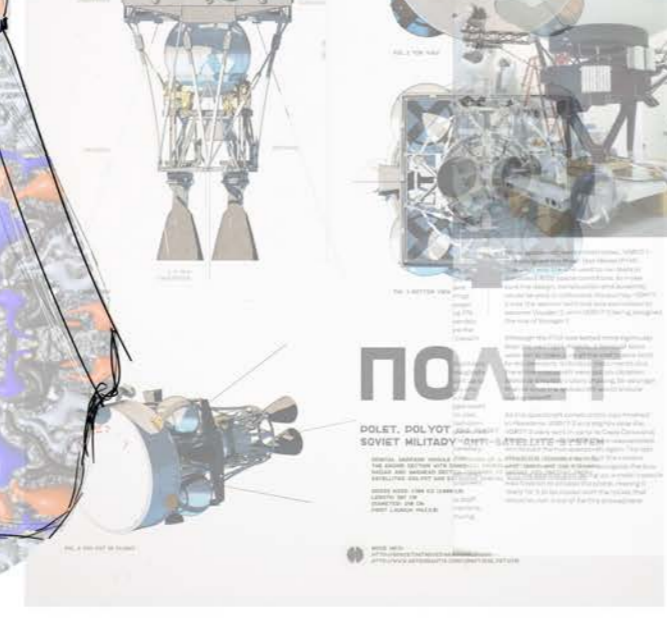
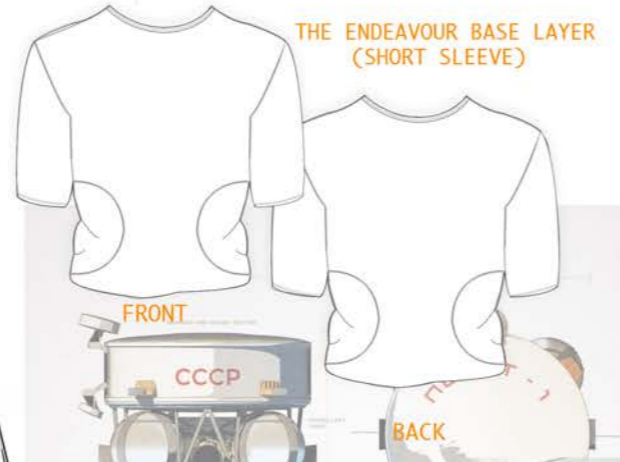
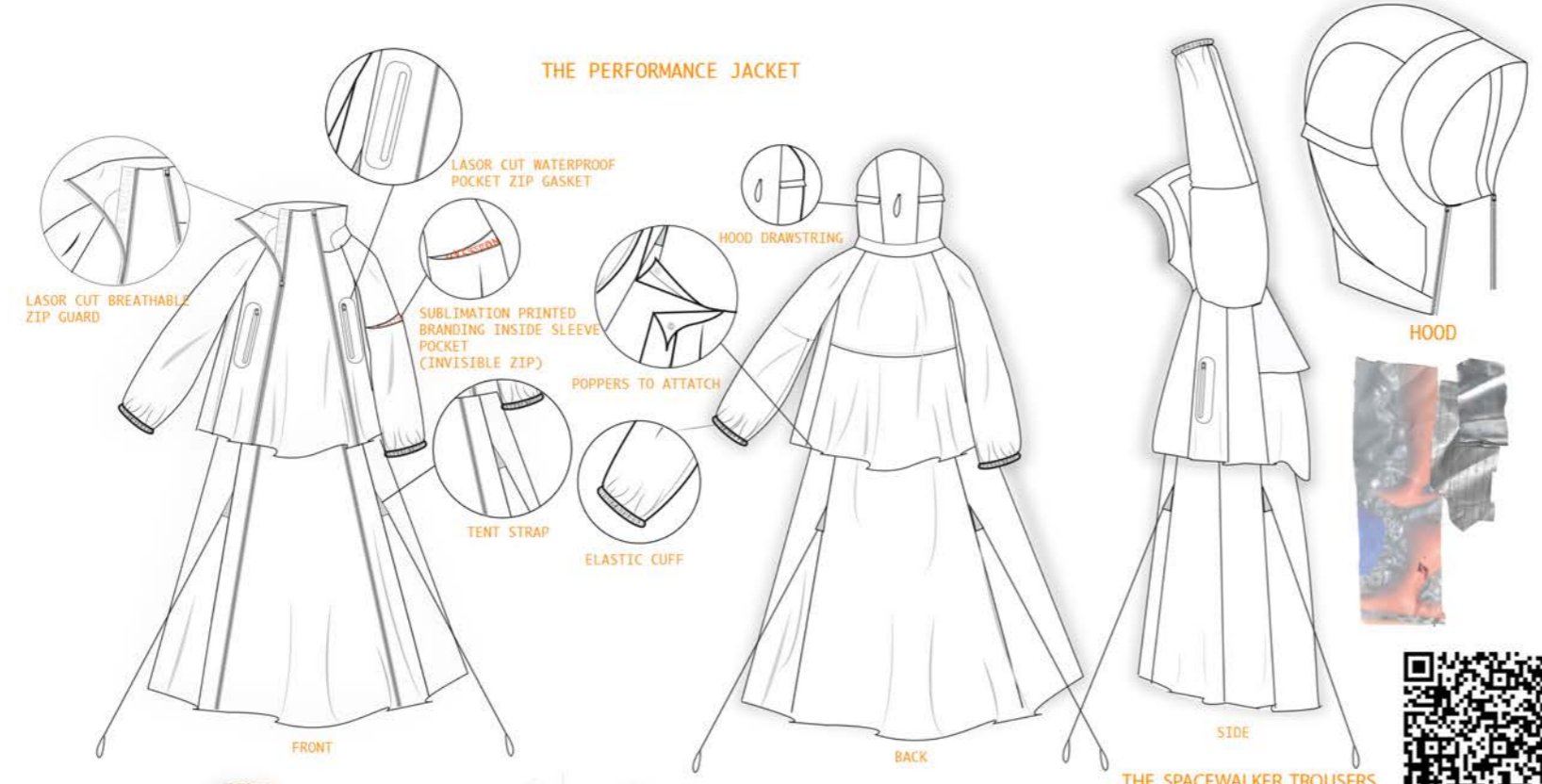
IMG_0560.JPG

SHAPE DEVELOPMENT



INSPIRATION FOR DETAIL CAME FROM THE EQUIPMENT THAT IS USED IN SPACE EXPLORATION, FOR EXAMPLE TIM PEAKS Soyuz TMA-19M DESCENT MODULE, THE LARGE BOLTS AROUND THE RIM OF THE WINDOW INSPIRED ME TO CREATE A DETATCHABLE POCKET USING LARGE BUTTONS AROUND THE EDGE OF A CIRCLE. FURTHERMORE, SEEING THIS MODULE IN THE SCIENCE MUSEUM, LONDON I WAS ABLE TO UNDERSTAND THAT THE INSIDE OF THE MODULE IS WHERE ALL OF THE DETAIL IS. I HAVE TAKEN THIS DETAIL FURTHER BY HAVING MY PRINTS AND EXTRA POCKETS ON THE INTERNALS OF MY GARMENTS.

DETAIL DEVELOPMENT



A COLLECTION INSPIRED BY
SPACE EXPLORATION FOR
DAY TO DAY EXPLORATION

LAUNCHED JANUARY - MAY 2024

ASTRONAUT. GEORGIA VALENTINE

