

Everyone has their fragile period, the death of my family members and the new environment of living abroad always make me feel lonely and empty. Eventually, I experienced a sense of lacking belonging and security. I always miss a specific time in my childhood, and the memories of the past pull at me, making me constantly reminisce and close my heart. These childhood memories become a haven for me to escape reality.

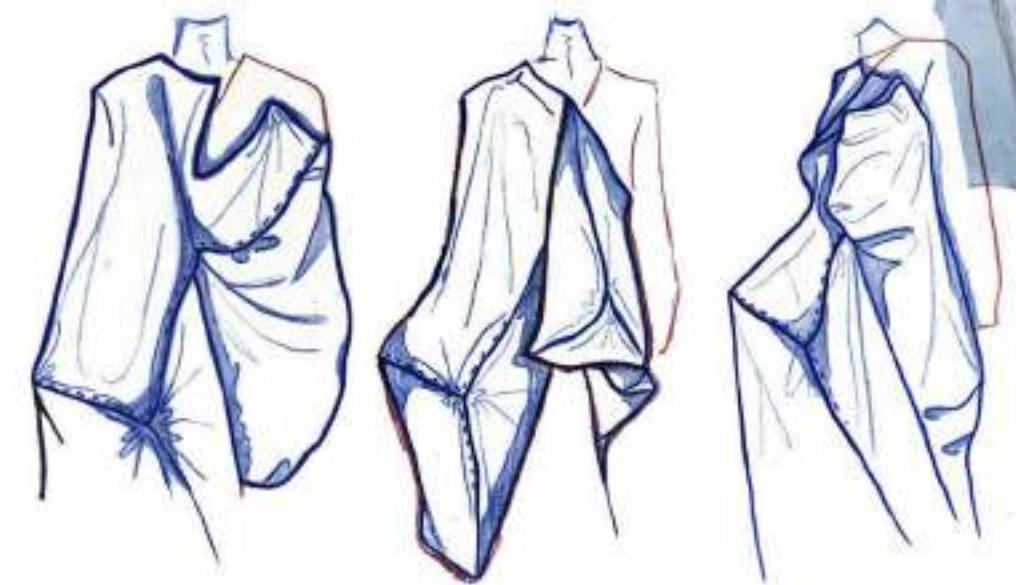
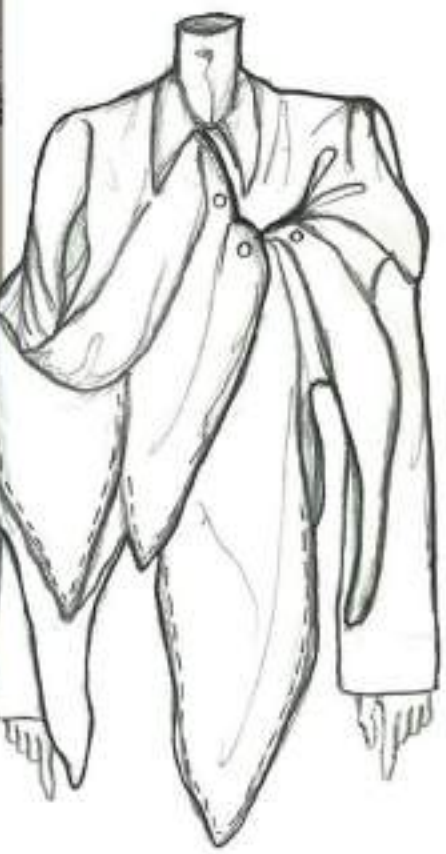
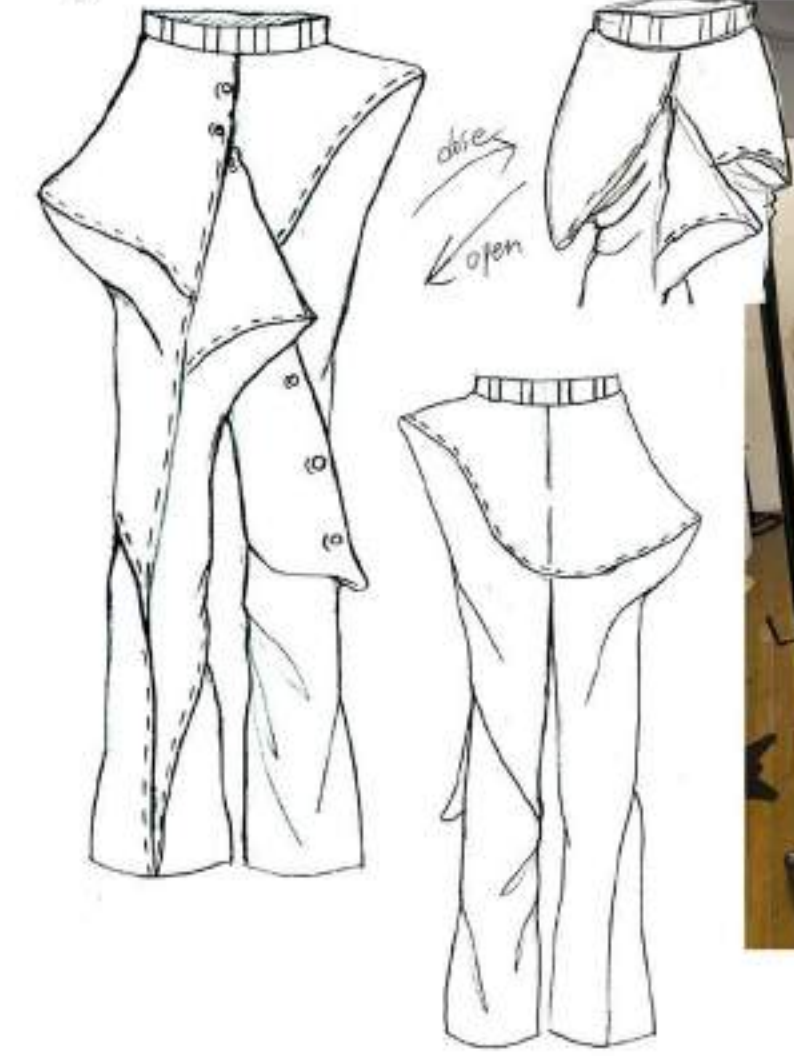
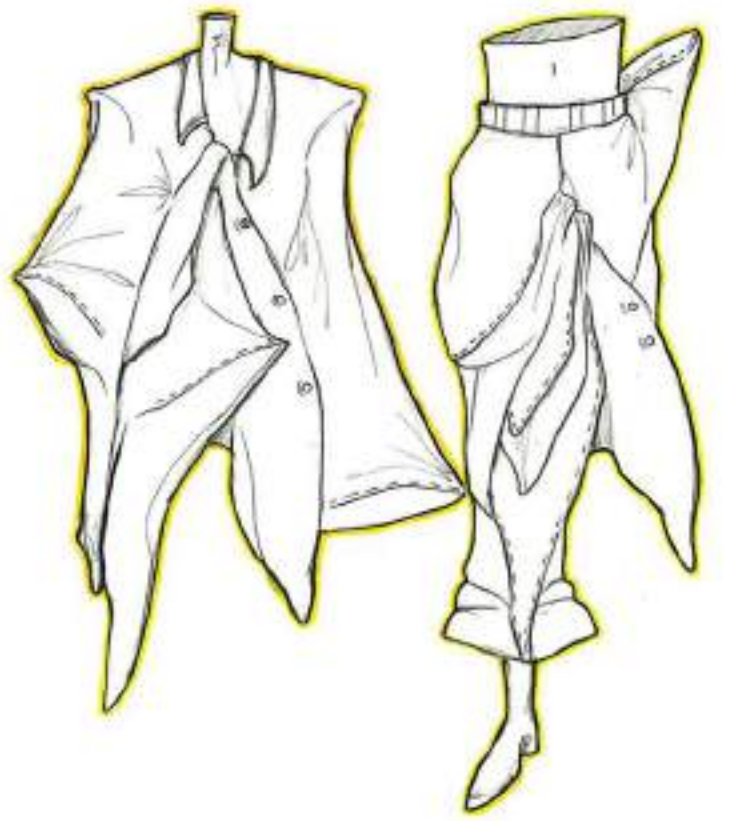
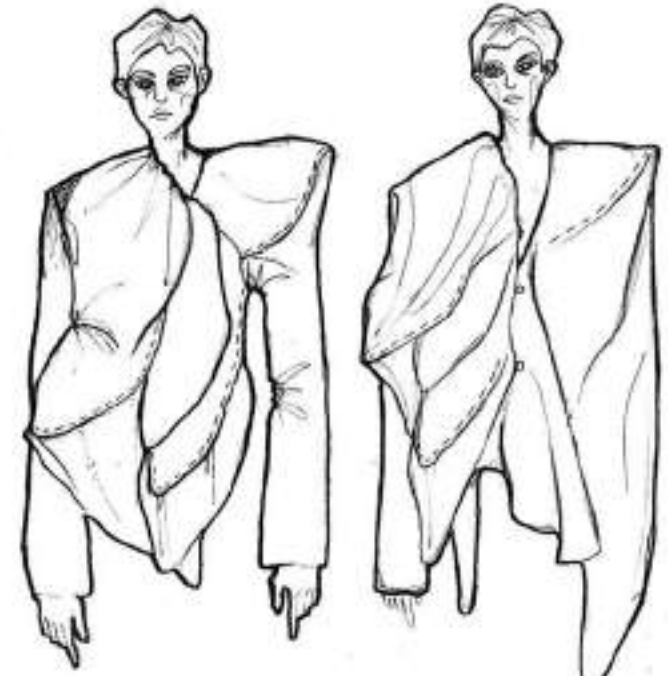
In this project, I explore the human quest for belonging, dividing it into coexistence (a sense of self-worth) and spatiality (an instinct triggered by loneliness to seek refuge). Through my innovative clothing designs, I visually express the lack of belonging in society.

MY DWELLING PLACE



I prefer being alone in small spaces as they provide a sense of security and control. By deconstructing a shirt, I create a confined space within the collar. This enclosed space surrounds my head, while the outer space (the room) serves as extra room. I can move freely in the extra space while my focus remains within the shirt. Through this experiment, I explored clothing space, taking inspiration from different postures and draping experiments on the human body. In this case, the clothes provide additional exercise space, providing me with a comfortable small space.

Each additional vertex in the space is subjected to an experiment to fill the space, and the sleeve of the shirt falls to varying degrees due to the position of the filling.

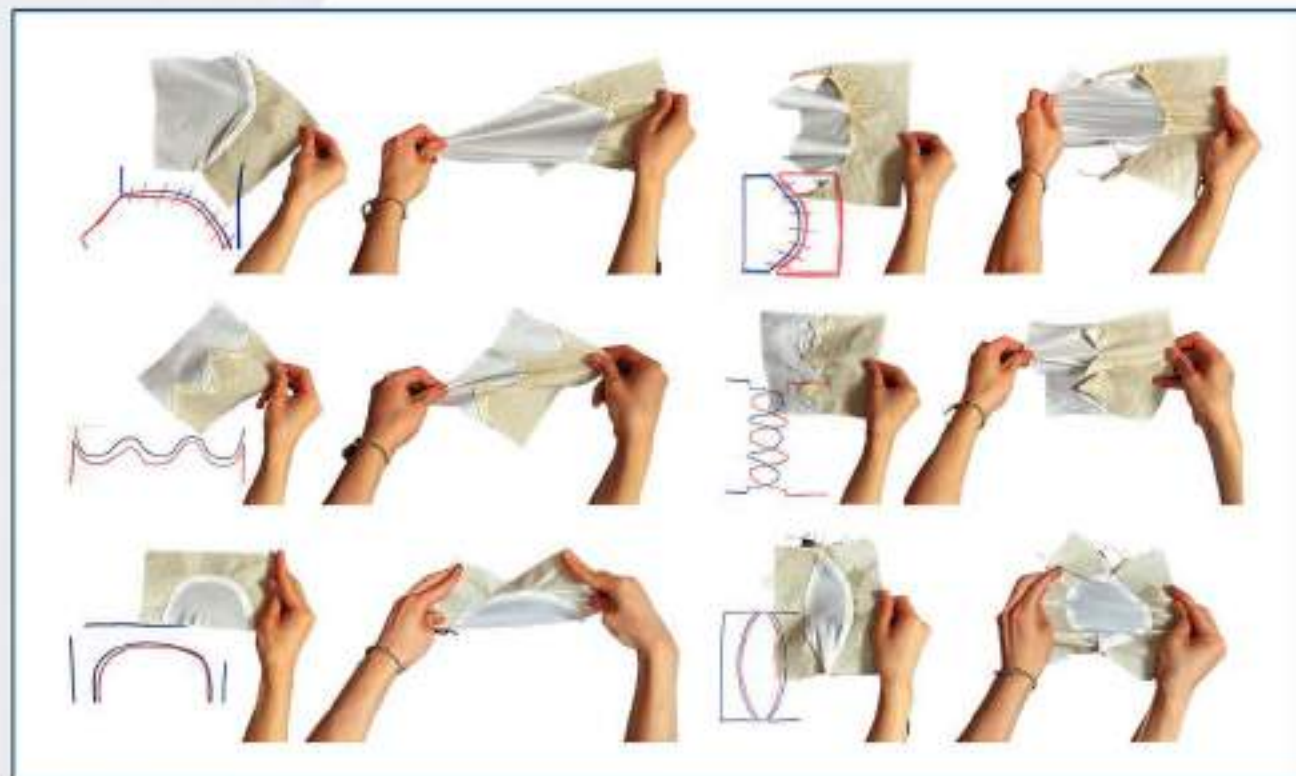
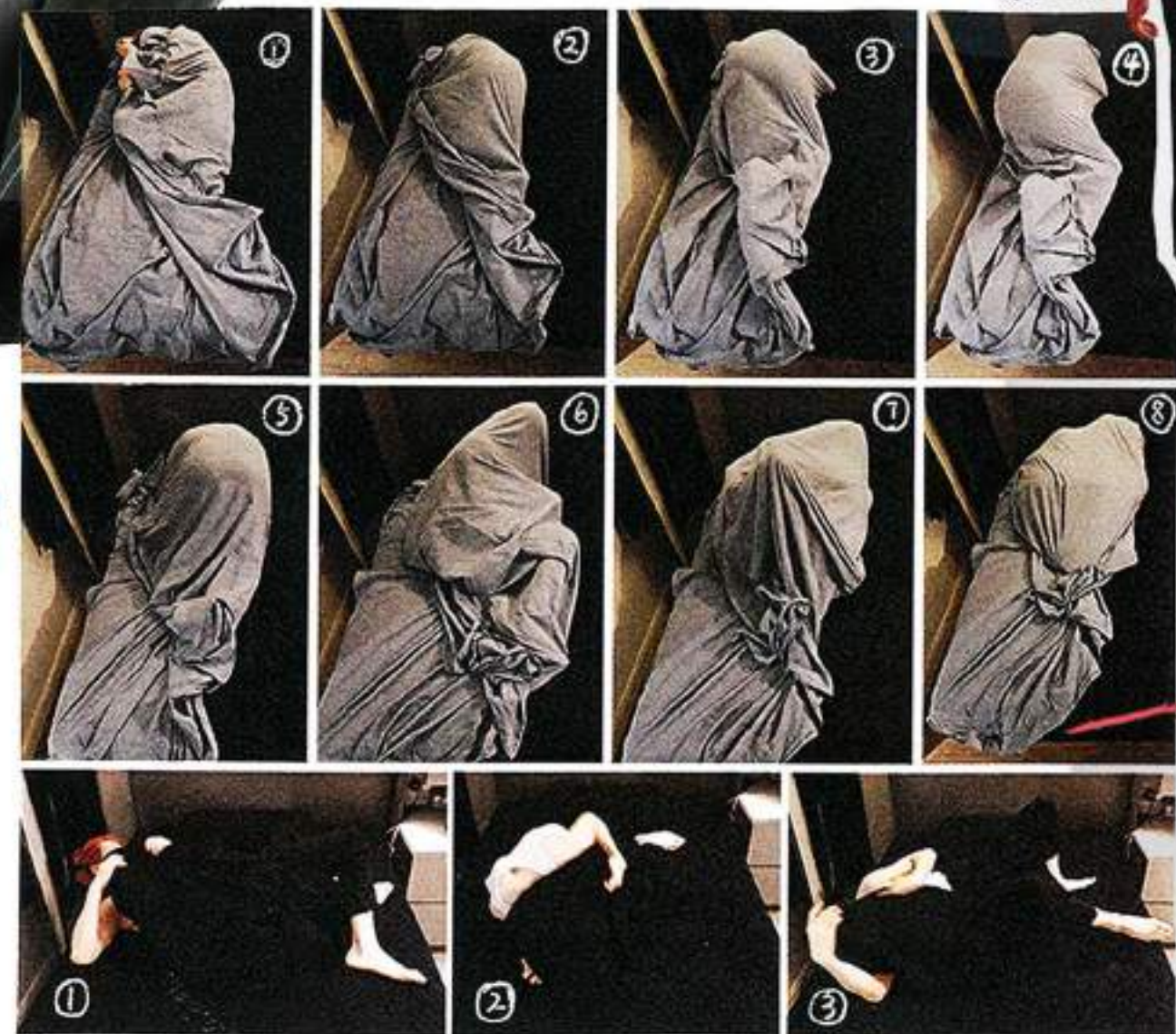


Back



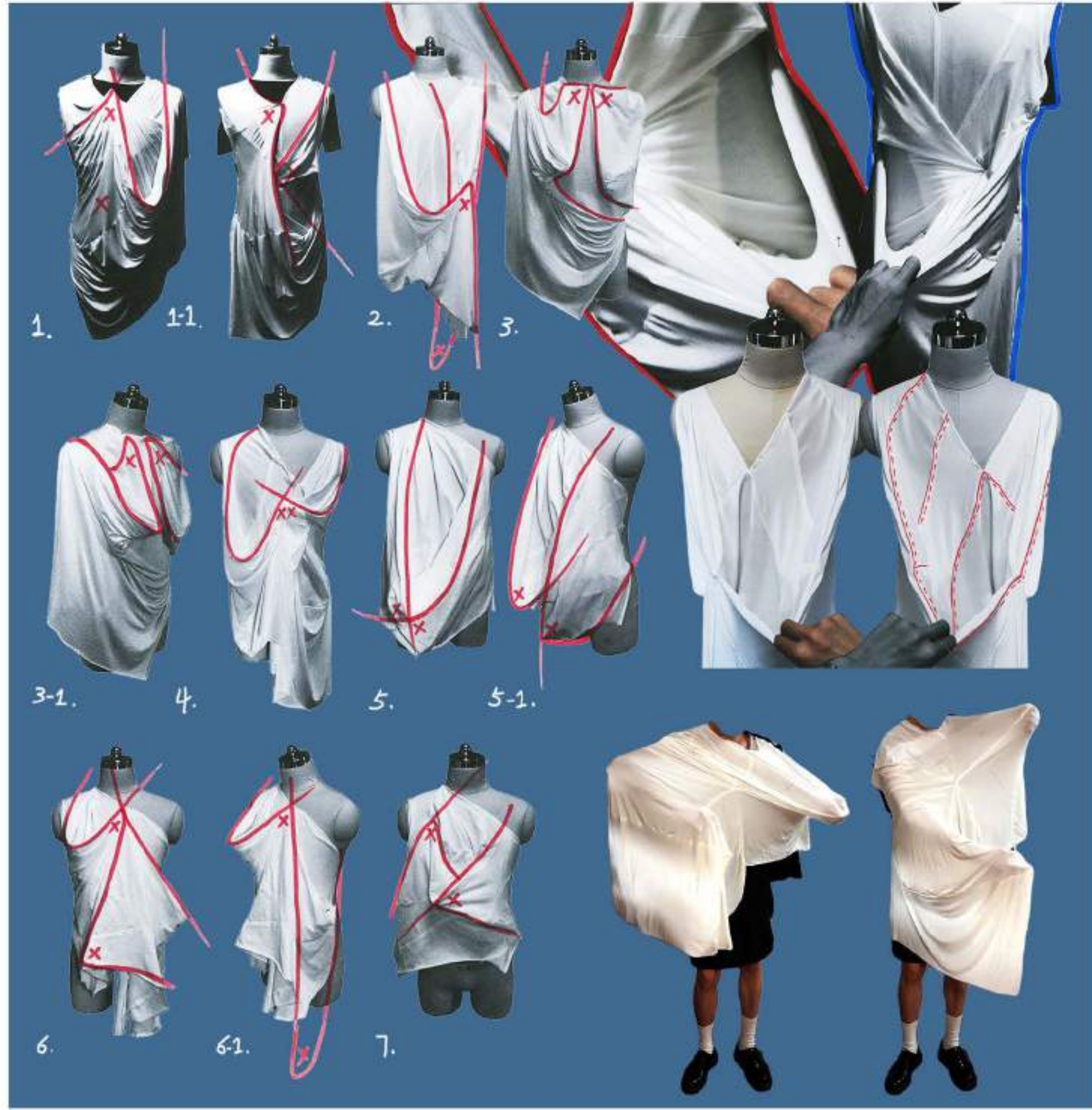
The fabric is stretched too far.

When I sleep, I often wrap myself tightly with a blanket, and this subconscious habit can bring me extreme comfort and security.



This may be related to the memories of my childhood when my mother tightly wrapped me in a blanket, making me feel a sense of belonging. Based on this warm childhood spatial memory, I attempted to modify the calico fabric by replacing the wrinkled parts with knitted fabric to find and recreate my sense of belonging.





Jersey Fabric Space 1

I conducted a series of stretching experiments on jersey fabrics using my body, and based on the test results, I divided the jersey fabric sheets to form an additional space protruding from the human body. The characters moved along the additional space after sewing, forming a large number of natural downward folds during human activity.





I look for inspiration for colors from old photos from the past. As the dust covers the years, old photos gradually turn yellow, and the fading ink forms blue marks. The gradual weakening of the sense of belonging is like a process of color changing from dark to light.

I use time-lapse photography to capture some of my current state of mind, and by adjusting the exposure and contrast, I create a subtle atmosphere for the characters, like a blurry photo shrouded in dust in memories.

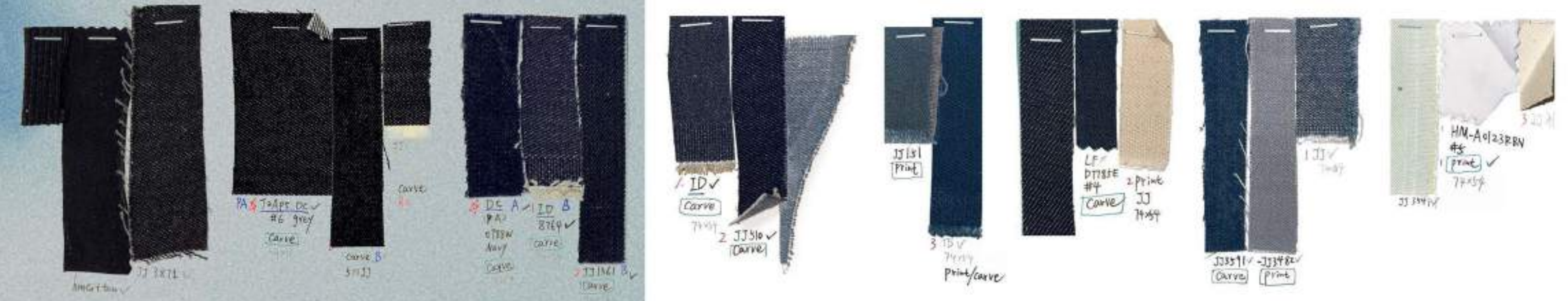


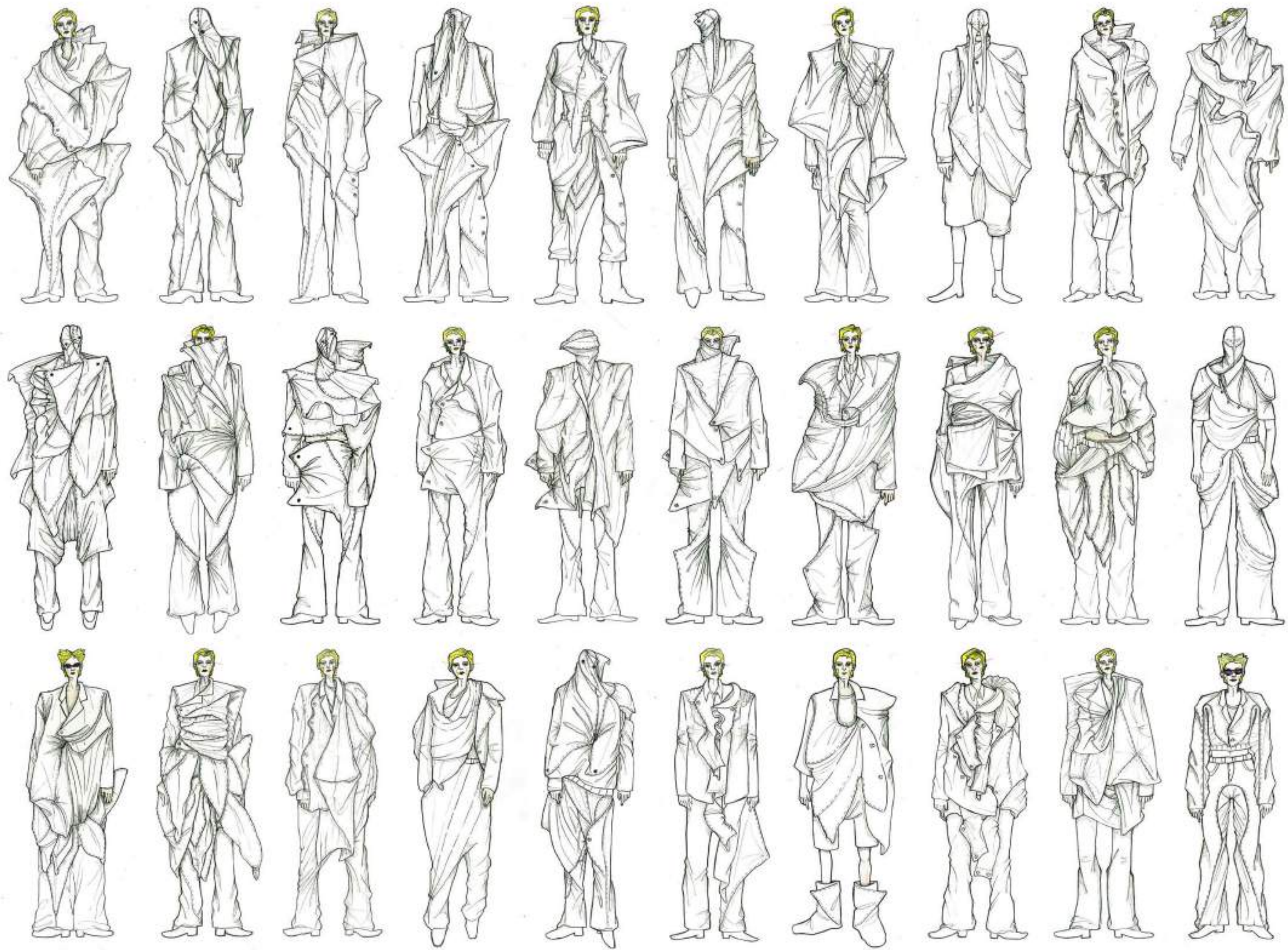
Laser printing

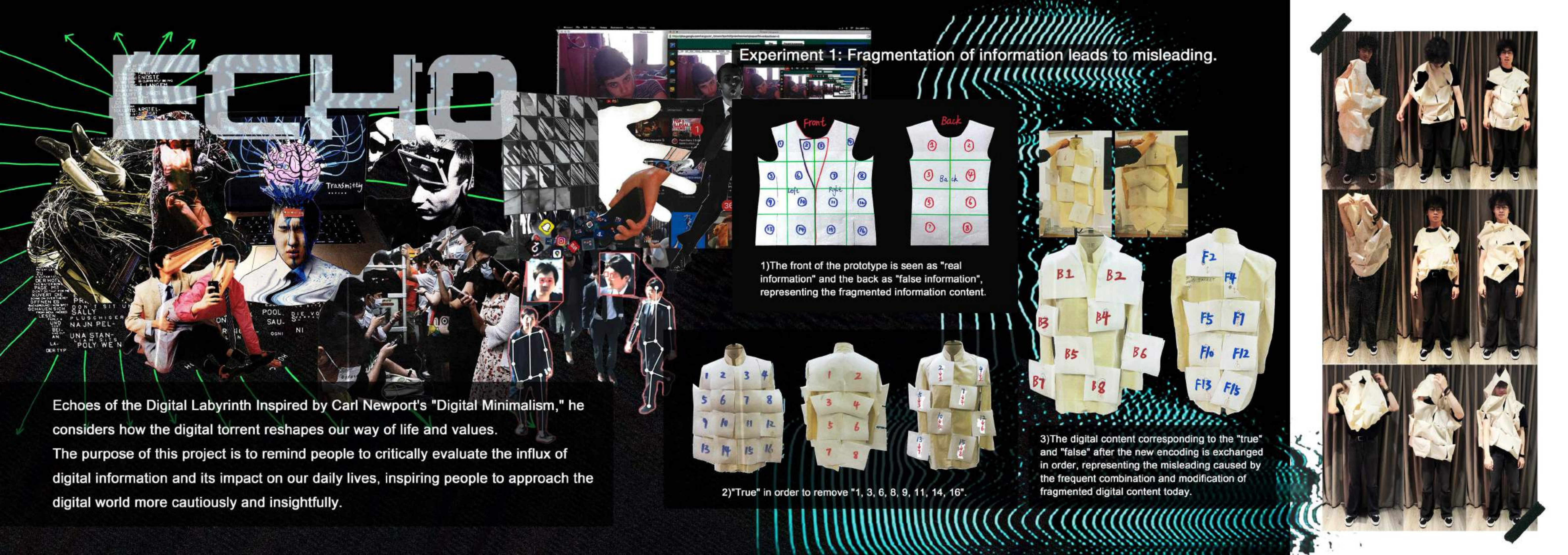


Digital printing

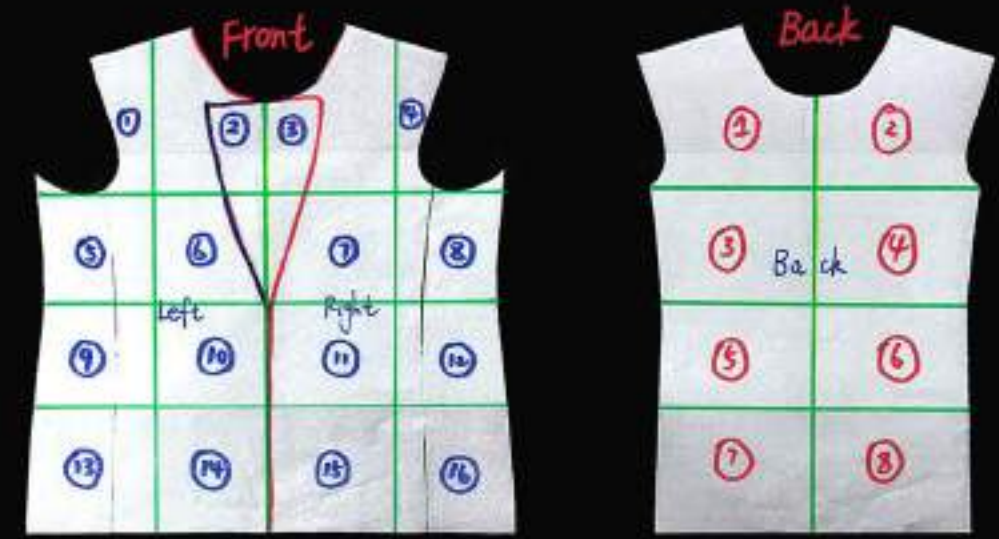
Another way for people to gain a sense of belonging is to integrate into the environment or group that suits them. I often fantasize about going back to my childhood room in the photo, when the timeline becomes stronger and covers me, at which point I gain the strongest sense of belonging. On the contrary, when I leave, my sense of belonging gradually disappears. Therefore, I choose to use denim of different depths combined with laser printing technology to express the overlap of memory and the interweaving of light and shadow.







Experiment 1: Fragmentation of information leads to misleading.



1) The front of the prototype is seen as "real information" and the back as "false information", representing the fragmented information content.



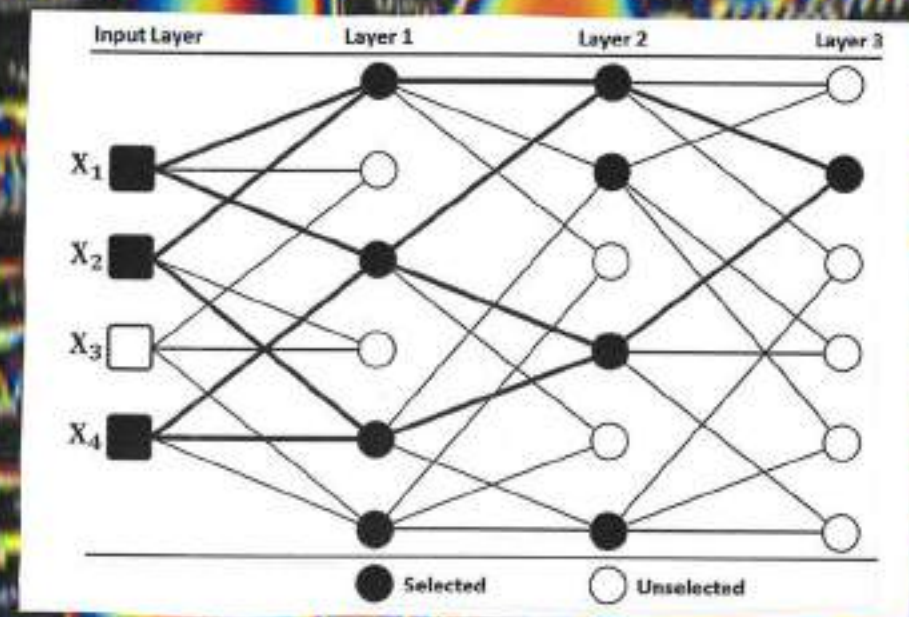
2) "True" in order to remove "1, 3, 6, 8, 9, 11, 14, 16".



3) The digital content corresponding to the "true" and "false" after the new encoding is exchanged in order, representing the misleading caused by the frequent combination and modification of fragmented digital content today.



Echoes of the Digital Labyrinth Inspired by Carl Newport's "Digital Minimalism," he considers how the digital torrent reshapes our way of life and values. The purpose of this project is to remind people to critically evaluate the influx of digital information and its impact on our daily lives, inspiring people to approach the digital world more cautiously and insightfully.



Gradually, people get used to ingesting information without thinking about it in digital information.



Digital algorithms influence people, and they are more likely to be exposed to information that agrees with their views. With a large amount of digital information, our concentration is reduced, resulting in our ability to discriminate information.

```

Mapper<Object, Text, Text, IntWritable>
Intent = new Text();
Writable one = new IntWritable(1);

Text value, Context context
-uptedException (
the current input split()
lit)context.getName()
tokenizer(value.toString()
ation and ste

```

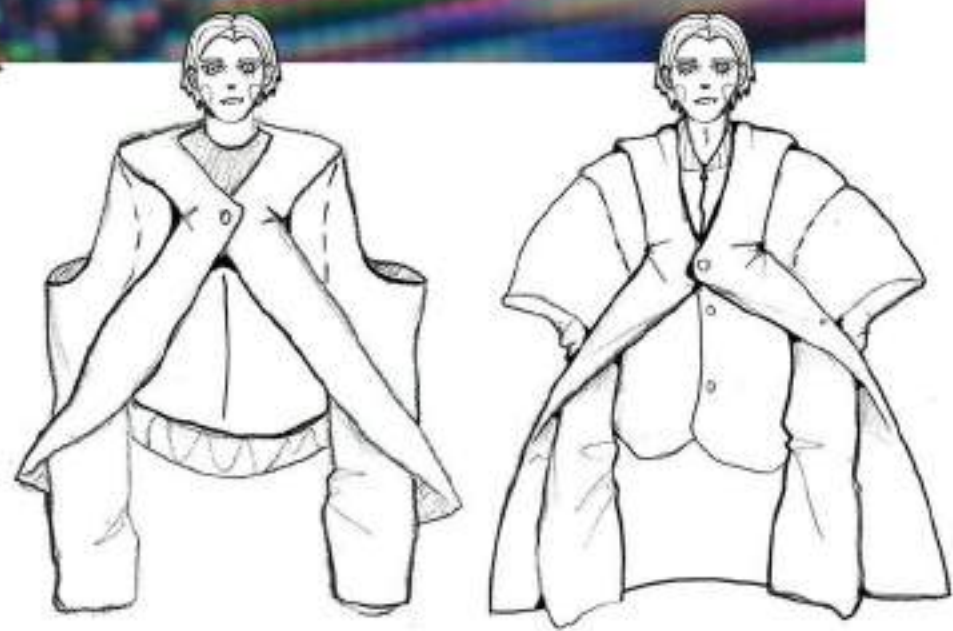


Experiment 3: True or False, The Deceptive Blend.

Cut the front and back panels into eight pieces, and mix the 'true and false information' by rotating them. While maintaining a symmetrical left-right design, preserve some wearable human body features that carry specific symbolic or guiding thoughts. For instance, keep a semblance of sleeve panel structures while creating an asymmetrical form, resulting in a carrier of information that is difficult to discern as true or false, heavily influenced by interventions.



Possibility of collar structure



In the normal state, when the "information body" is worn on the body, because the partial wearing mode of the sleeve is retained, the audience can choose to wear the sleeve or let the structure on both sides of the costume naturally hang down on the side of the body, forming a structural fragment surrounding the human body.

