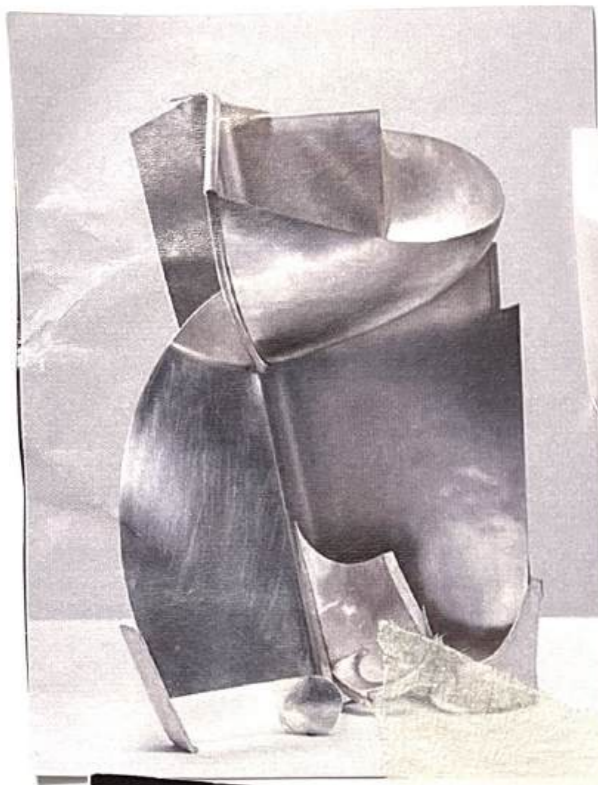


AW 24 COLLECTION

SCULPTED
BOAT





asymmetric opening
curved Jacket

could be developed
as curved sleeve shape
with pleats on
wide rounded
shoulder



wide open neck

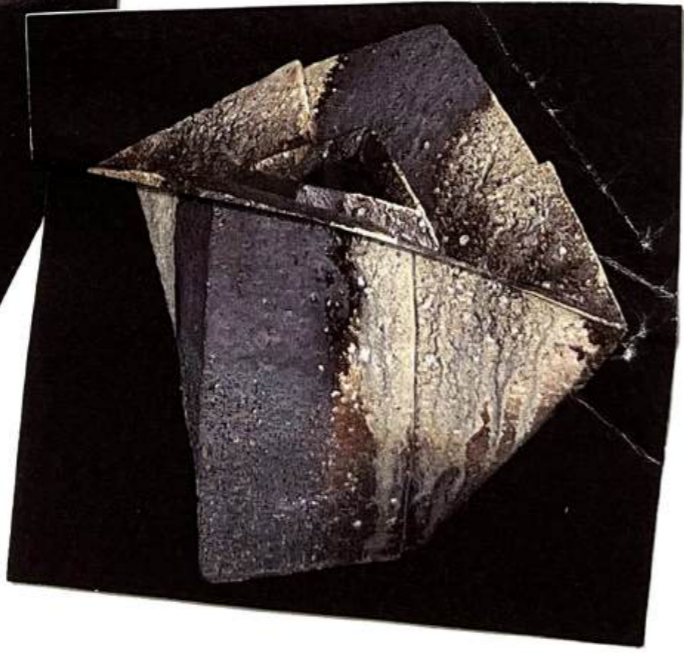
Draped cowl neck
could be front or back

twisted rounding
trouser

draped following
curve of
the
body

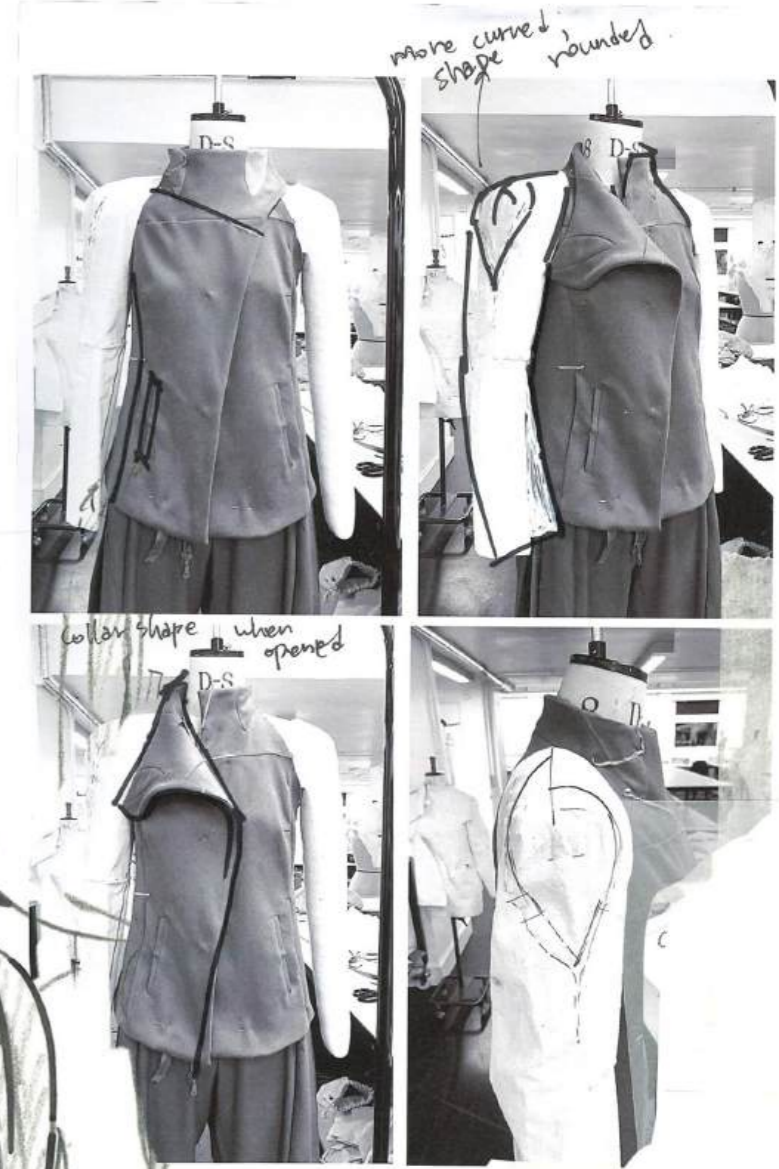
curved pleating construction
on the trouser hem
in side leg tucked

trouser with draping on the
side



Curved sleeve
developing with pleating

asymmetric
curved
opening



more curved
slope rounded

pleats on
sleeve

~~round~~
rounded sleeve
developing

flowing the curves
on the body

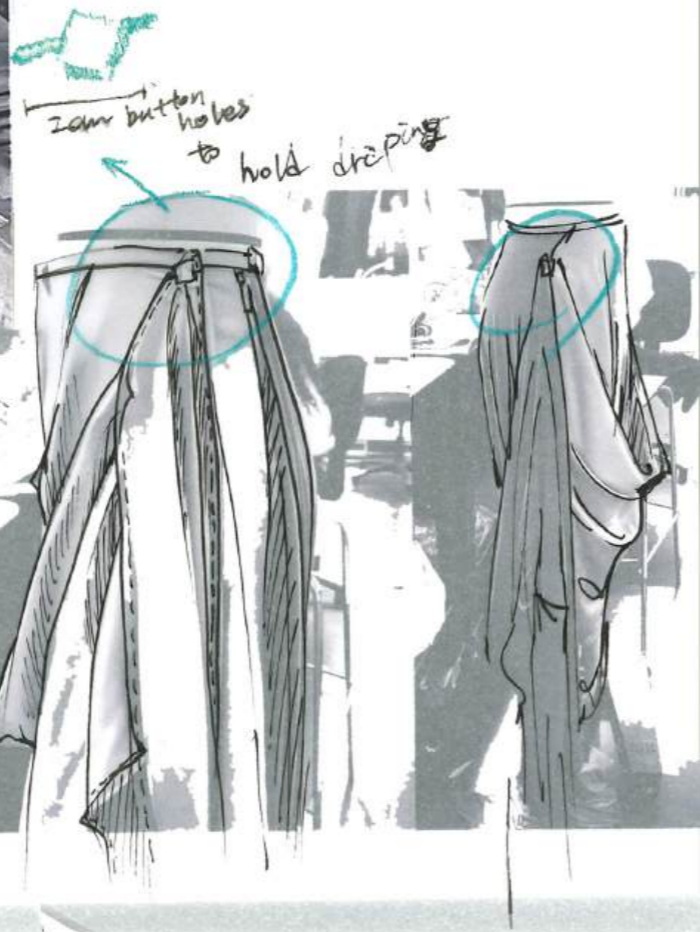
pleated pocket
of side seam
pocket
+ welt pocket

Kennett & Lindsay Ltd

two-way zip



can be shorter
with button holes





French seam
side pocket

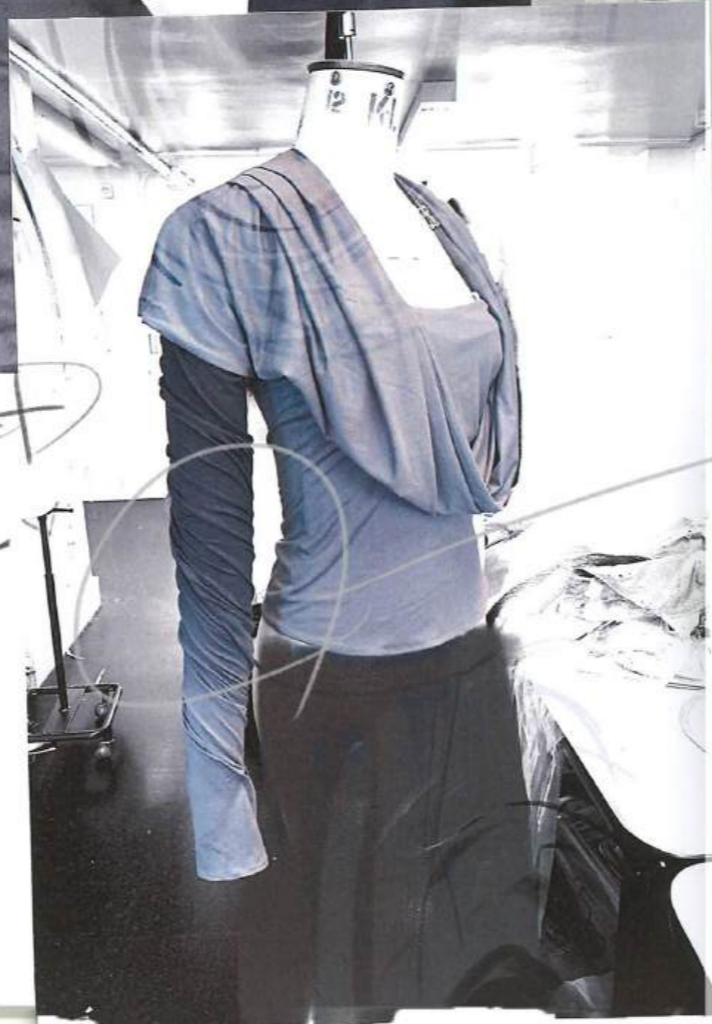


3.5cm
waist band bound edge &
slip stitch





Cowl neck on the front
with silver necklaces
draped



Ombre
twisted
sleeves

Look 2

Silver draped top
+
twisted
trouser



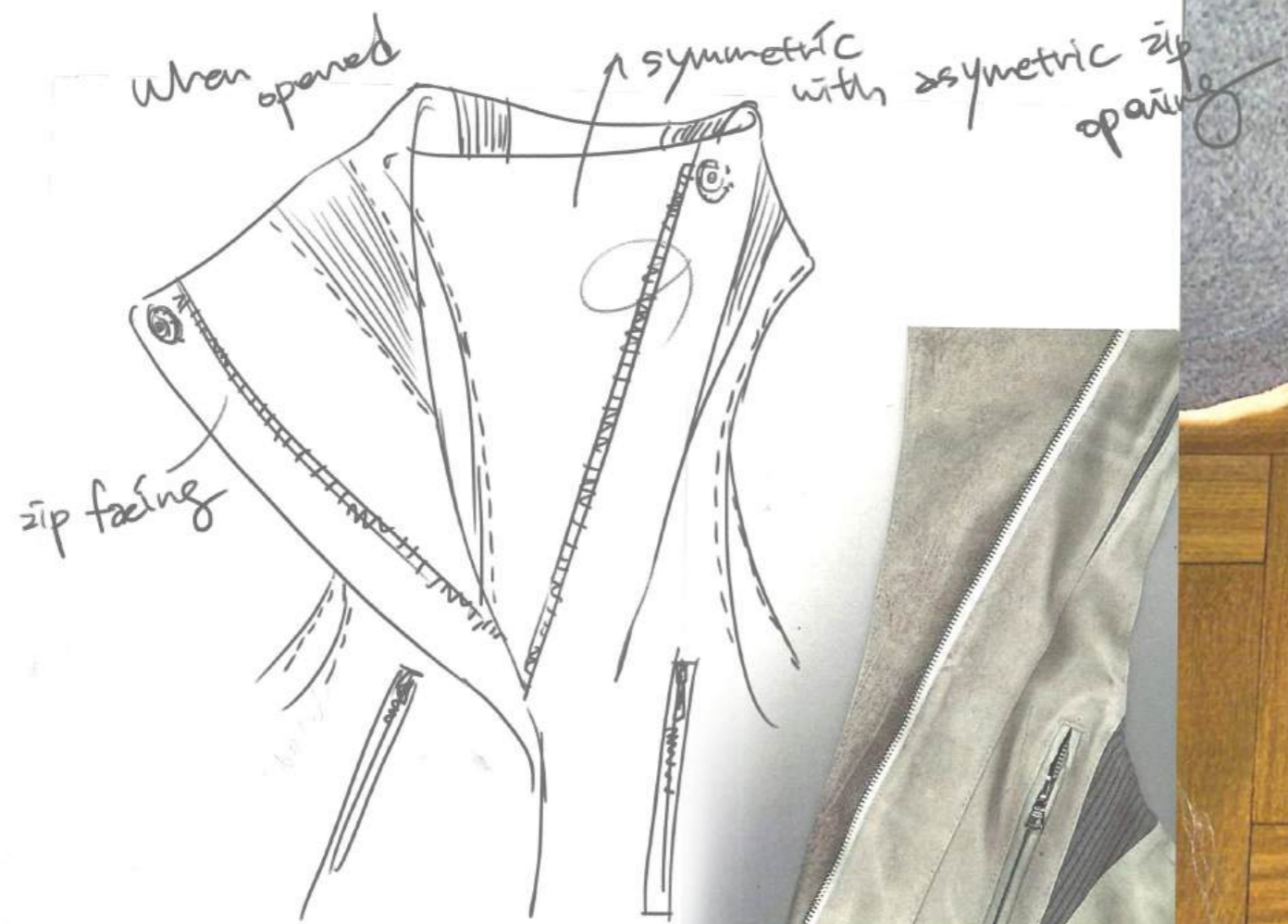
twisted construction



Week 4 Leather waistcoat
Sewing process



↓
Front zip pocket



Jersey panel waistband



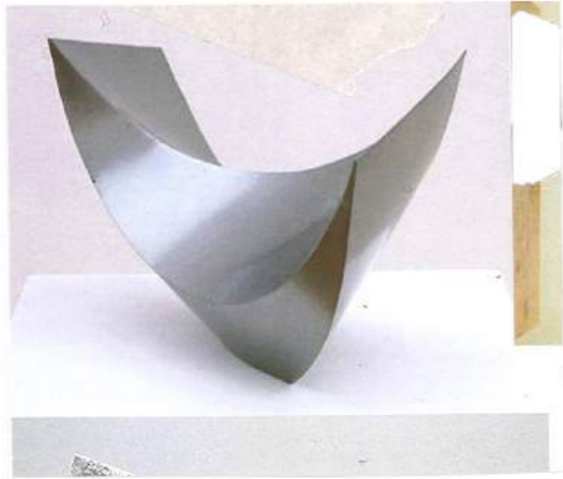
Look 3 Curved mint dress

Jersey



with Draped Bag - Scarf

Sculptured twisted bag



TWISTED BAG TOP
CUT 2 (not flipped
cut 2 as 77 is)



