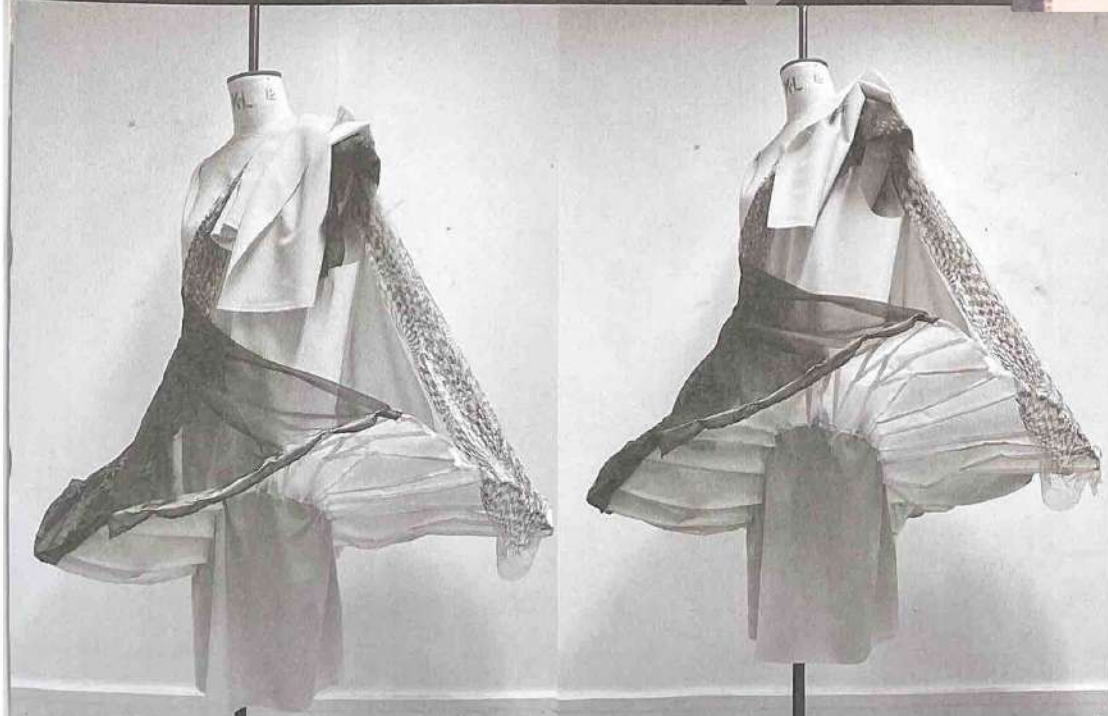
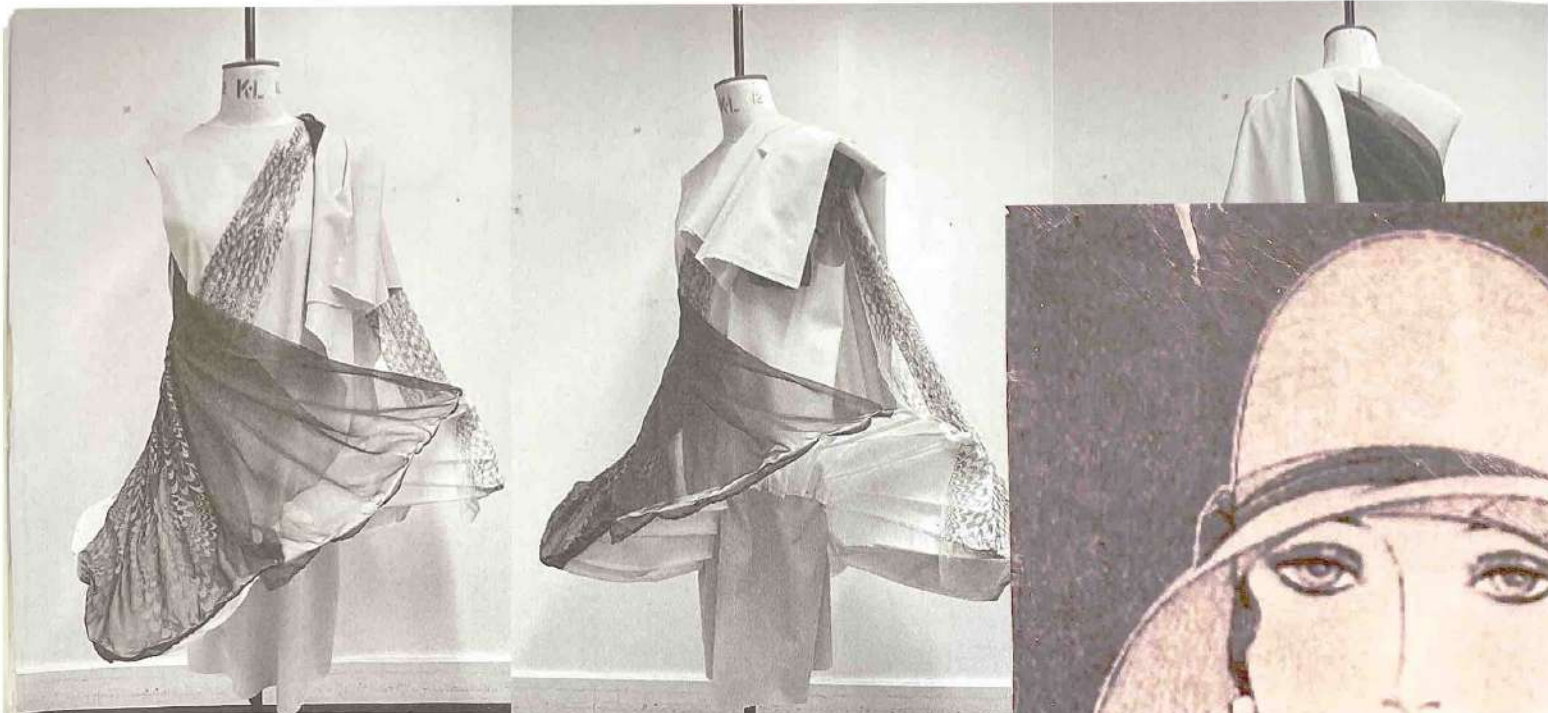
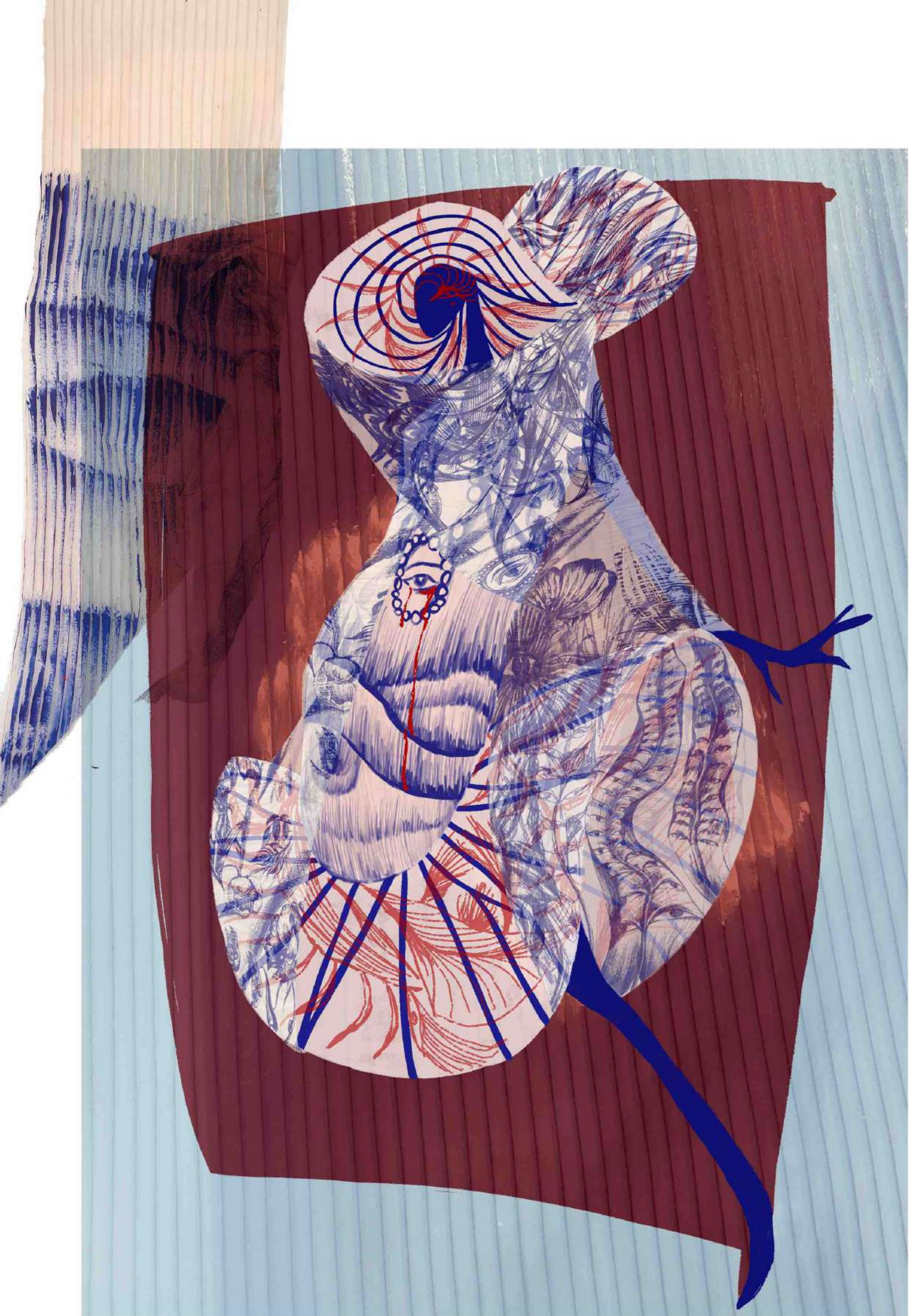




The Secret Lovers



One side comes into the heat



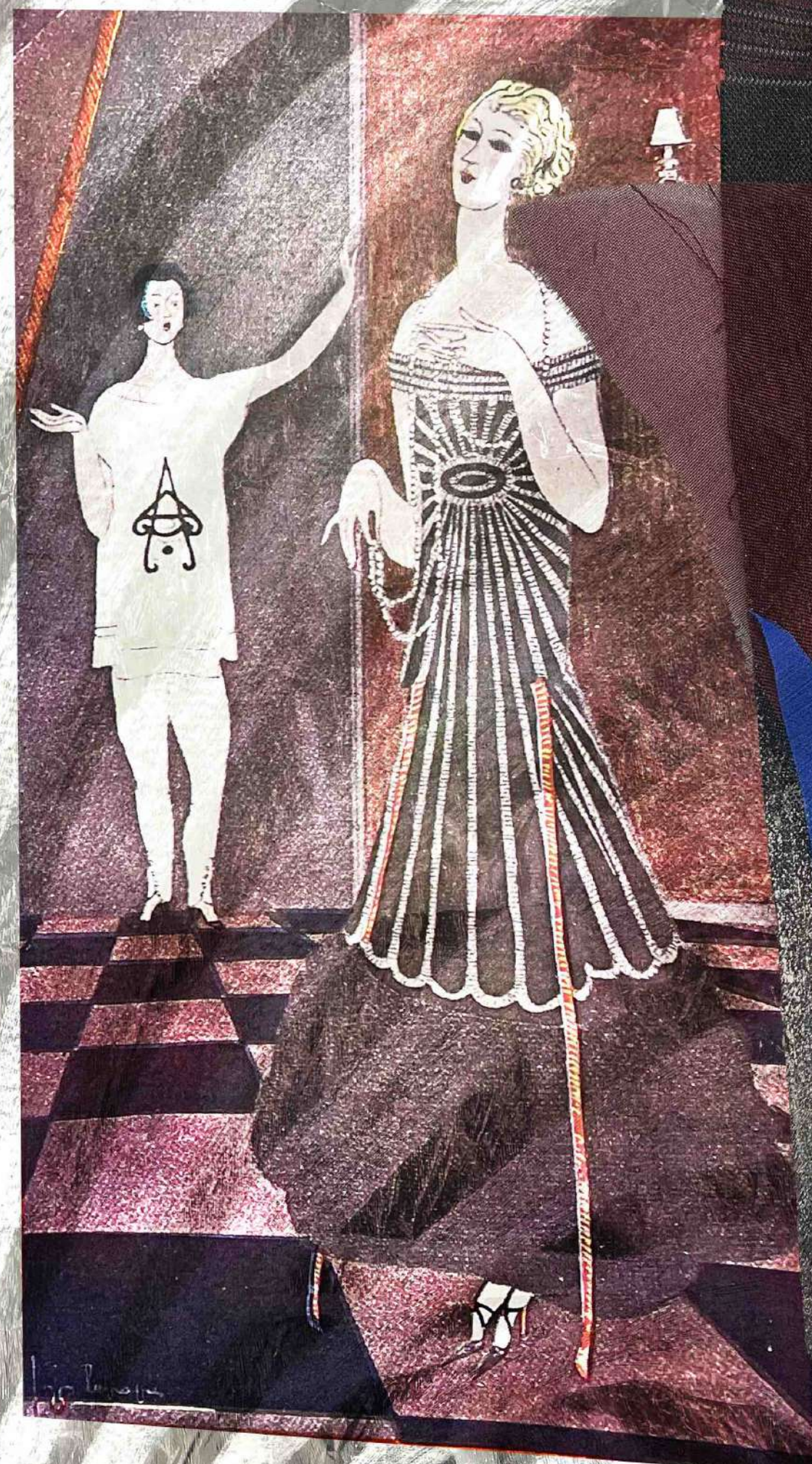
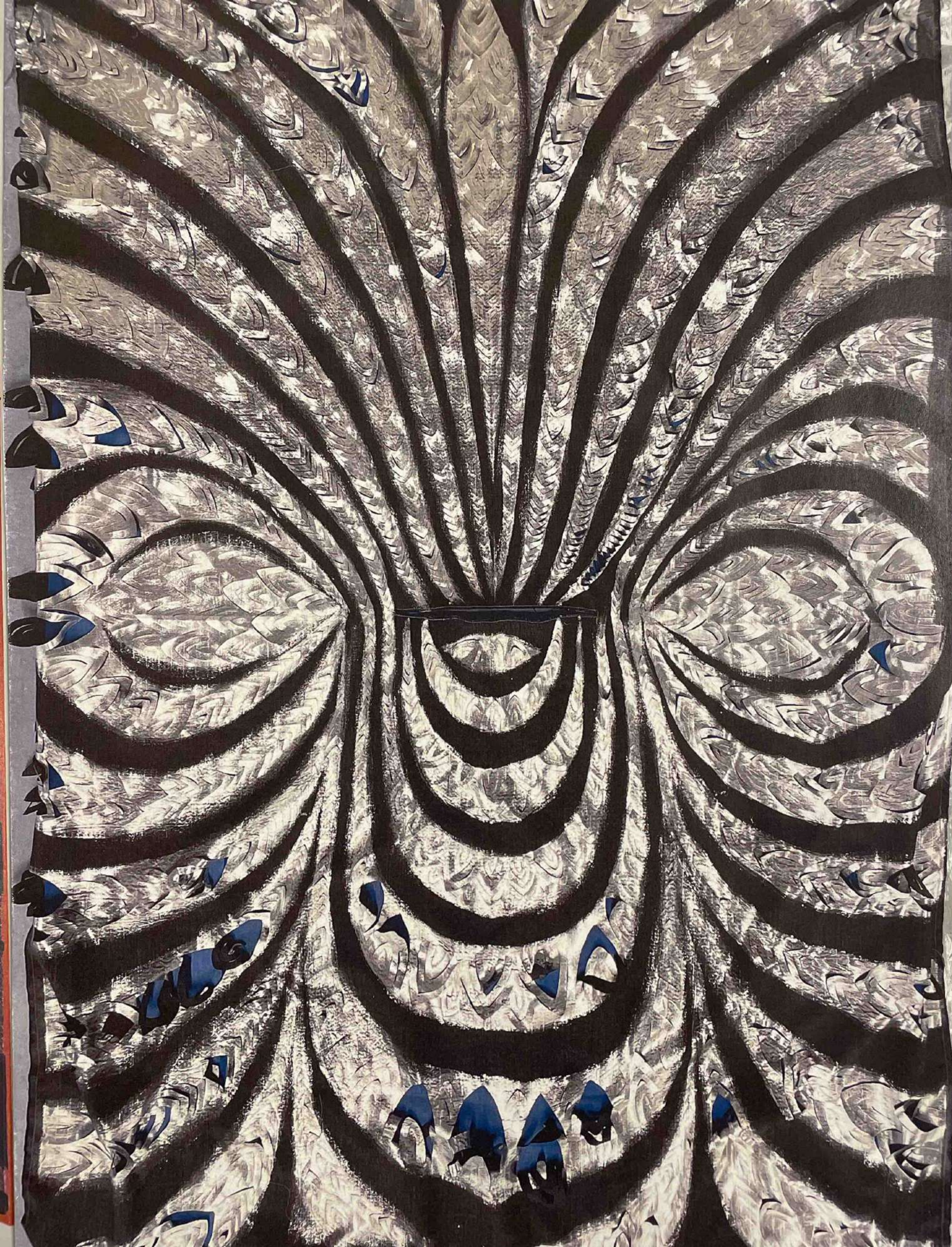


inspired by
the hat brim
in the 1920s

Pocket

WALKING ON MONTMARTRE (La Promenade à Montmartre); ensemble by
Bess; drawn by Charles Martin (1920, issue 9, Plate 68). Dress of "bishop-violet"
chamoise with red edgings; black velvet cape with...







make a yoke
to carry the
skirt

Waistband
needed

