



**QUINNIE •• YANG**

PARALLEL PULSE

AUTUMN WINTER 2025

UAL: LONDON COLLEGE OF FASHION  
BA FASHION DESIGN TECHNOLOGY: MENSWEAR

+44 07849763643

Q.YANG0420201@GMAIL.COM

INS: @QUINNIEYANG\_07

# RESEARCH



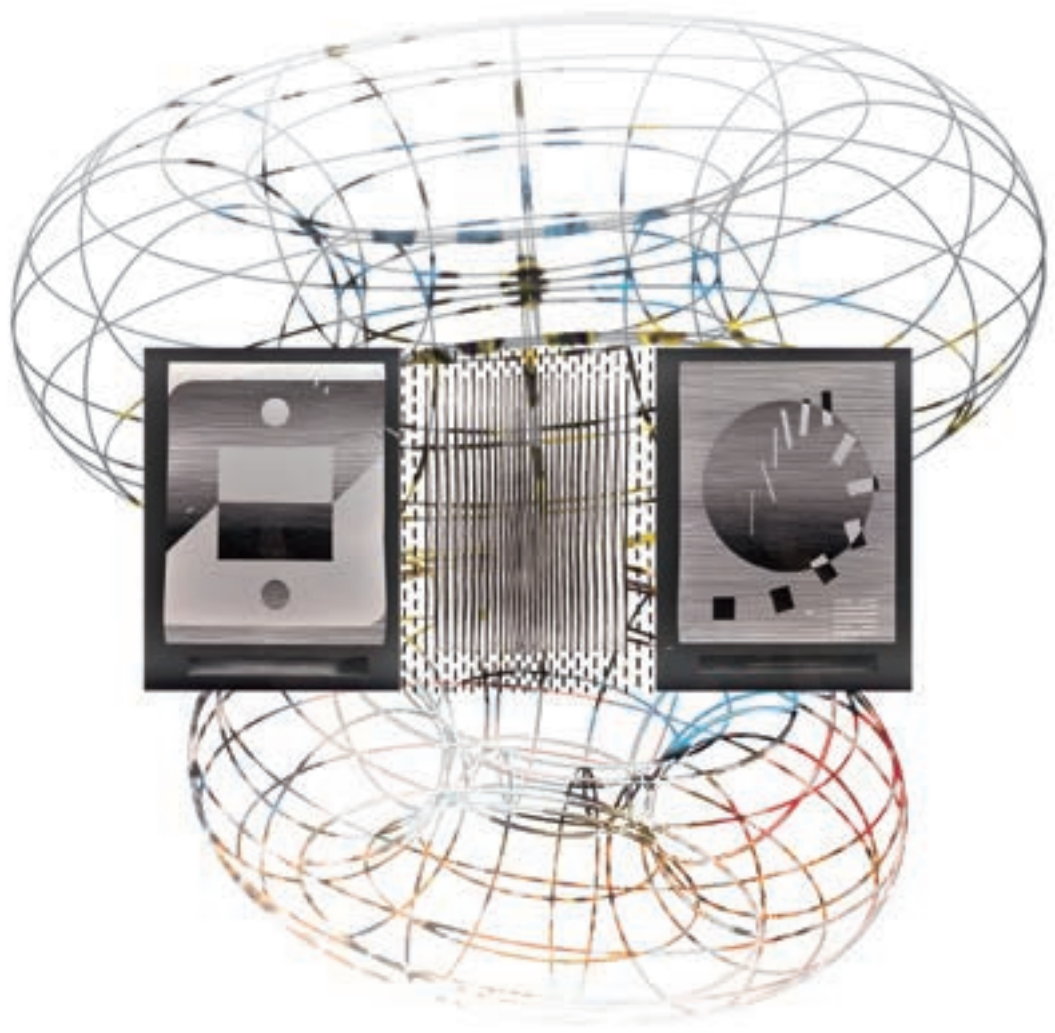
FREEDOM OF INTERPLANETARY MOVEMENT



DUCHAMP INTRODUCED MOVEMENT INTO PAINTING WITH OVERLAPPING CUBIST PLANES, WHICH INSPIRED ME TO CONSIDER THE OVERLAPPING SPACE INTO GARMENT CONSTRUCTION.



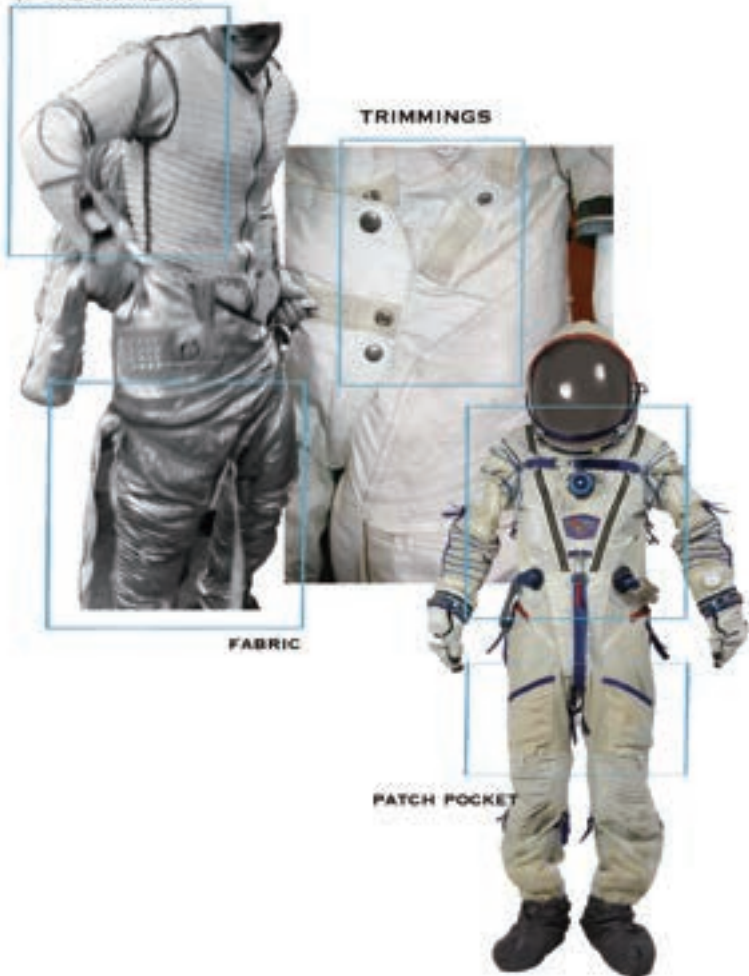
TEN THOUSANDS THINGS



PARTICLE ECLIPSE

# GARMENT RESEARCH

**DOUBLE-LAYER CONSTRUCTION OF THE GARMENT.**



**THE RIVET POSITIONS CORRESPOND TO THE BODY'S STRUCTURAL CURVES.**



**V-SHAPED CONSTRUCTION**



**GUSSET UNDERARM RIVETS AND STUDS**

**LAYERING SILHOUETTE**

**THE OUTER HALF OF THE TROUSERS LEG IS COVERED.**

# COLOUR PALETTE



PANTONE 454 C
PANTONE 7521 C
PANTONE 416C
PANTONE 431 C
PANTONE 471 C
PANTONE 7578 C
PANTONE COOL GREY 11C
PANTONE 7546 C
PANTONE 7687 C
PANTONE 440 C
PANTONE 7645 C
PANTONE 276 C

# MATERIALS

MY RESEARCH INTO SPACE EXPLORATION INSPIRED ME TO EXPLORE FUNCTIONAL AND TECHNICAL FABRICS CAPABLE OF WITHSTANDING EXTREME CLIMATES.

## WATER/WIND PROOF COTTON



SANDED  
DRILL  
RUSSET



SABAKU  
TWILL  
PEWTER



COATED  
COTTON  
CARBON

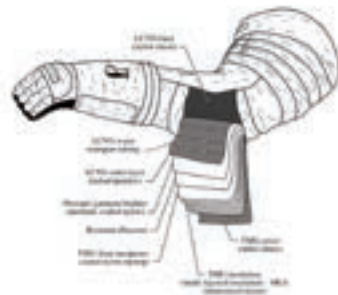
## SUSTAINABLE TECHNICAL FABRICS



LIQUID METAL FABRIC



AIRTEX



COTTON DRILL



COTTON DRILL



AIRTEX



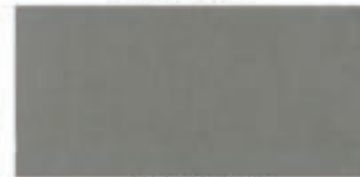
DENIM



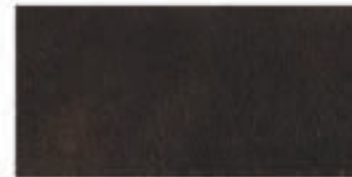
COTTON DRILL



POLYESTER



COTTON TWILL



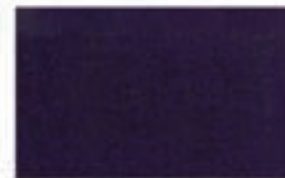
PU LEATHER



COTTON TWILL



PU LEATHER

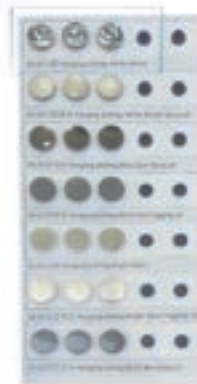


POLYESTER



PRINTED STRETCHY CREPE

# BRANDING





# DESIGN COLLAGE

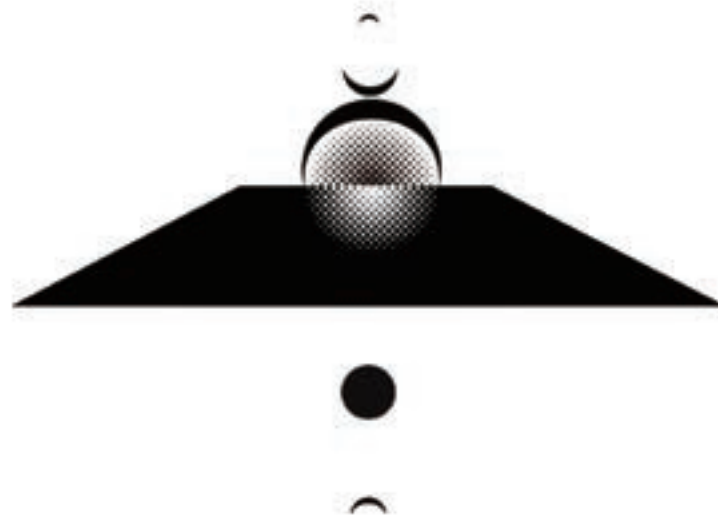
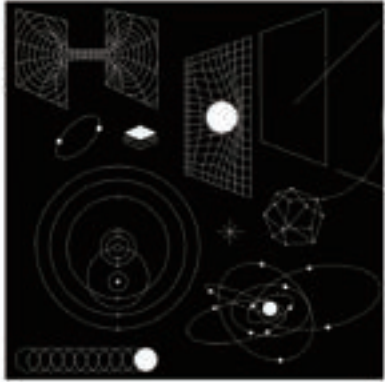


# TEXTILE DESIGN

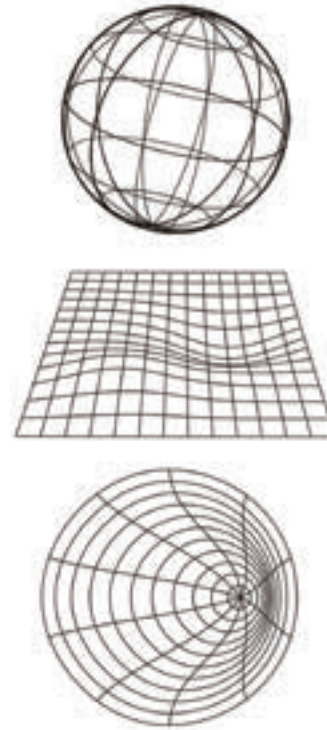
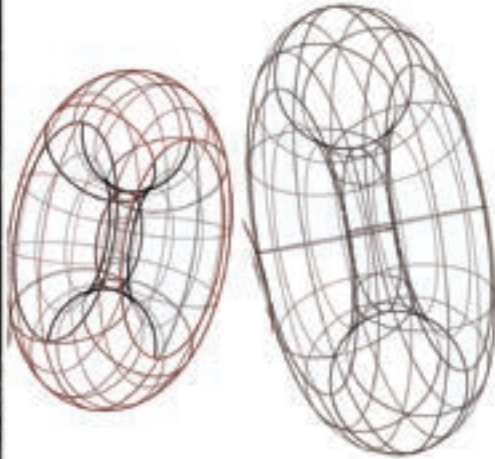


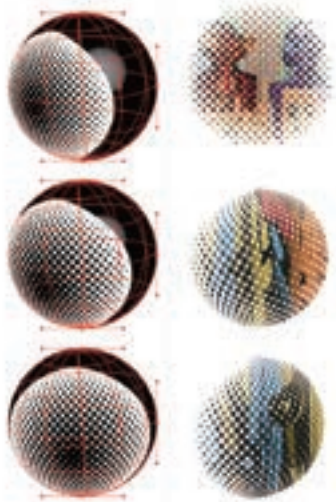
SKETCH





SKETCH





TRANSEFER PAPER HEATING TEST:

200°C 40s



200°C 65s





52

**SAMPLING DIFFERENT METHODS TO REPRESENT THE SPOTLIGHT OF THE GALAXY.**

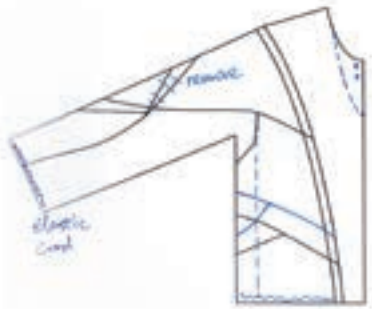


**[ACCEPTED] DIFFERENT SIZES AND COLOURS OF THE STUDS AND SPIKES. EVENTUALLY THE SIZES 8MM AND 12MM WERE CHOSEN.**

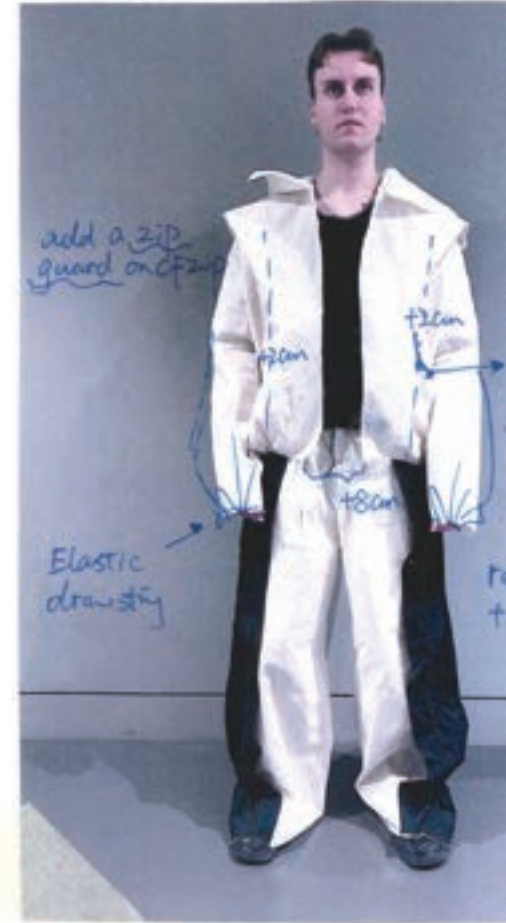
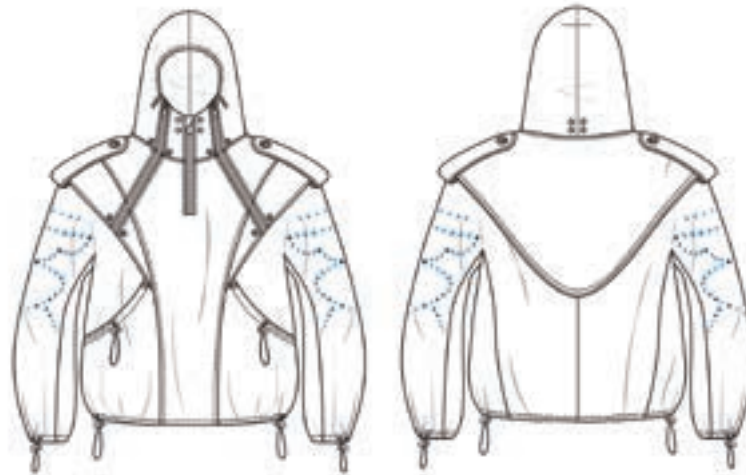
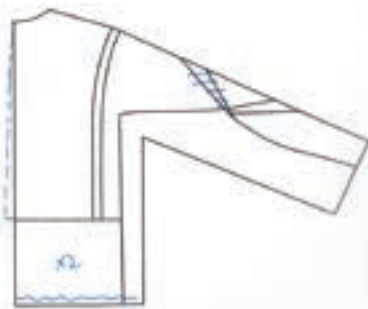


**[REJECTED] SECURE THE RIVETS, THEN STRETCH WETTED LEATHER OVER THEM TO DEFORM. DYE THE LEATHER WITH CHEMICAL AGENTS.**





The placement of studs on the front-Sleeve Panel. Mirroring the placement on the Back-Sleeve Panel.



# FINAL LINEUP

